



Akuvox X915X IP Touchscreen Smart Door Intercom Unit User Guide

[Home](#) » [Akuvox](#) » [Akuvox X915X IP Touchscreen Smart Door Intercom Unit User Guide](#) 

Akuvox

Smart Intercom
X915X
Quick Guide

Contents

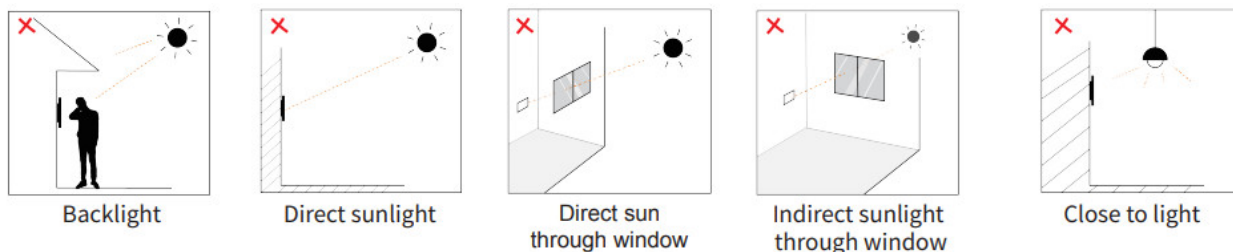
- [1 Installation Environment](#)
- [2 Step 1 Wall-mounting Box or Flush-mounting Box Installation](#)
- [3 Device Wiring](#)
- [4 Configuration](#)
- [5 Operation](#)
- [6 Unpacking](#)
- [7 Product Overview](#)
- [8 Documents / Resources](#)
 - [8.1 References](#)
- [9 Related Posts](#)

Installation Environment

Indoor and outdoor installation is supported.

If installing the device outdoors, please do not place the device under direct sunlight.

If installing the device indoors, please keep the device at least 2 meters away from light, and at least 3 meters away from the window and door.



Attention: Biometric recognition products may not be 100% accurate and applicable to all scenarios and environments. For higher security purposes or scenarios, please set up an access authentication combination.

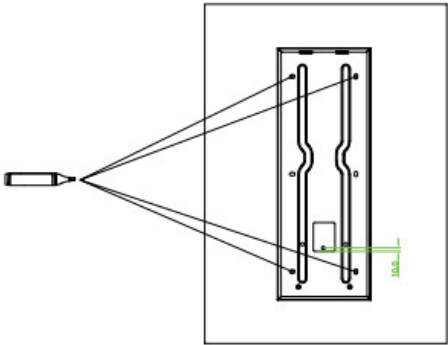
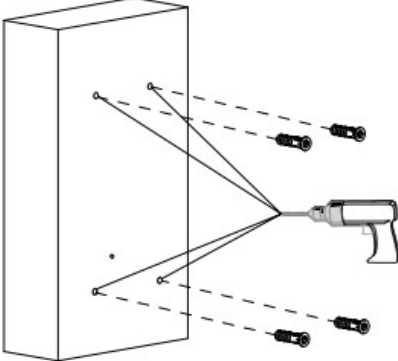
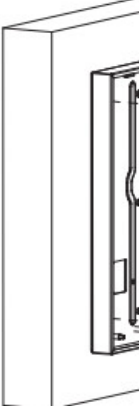
Step 1 Wall-mounting Box or Flush-mounting Box Installation

1. Wall-Mounting

1.1 With 86×86 mm embedded junction box in the wall

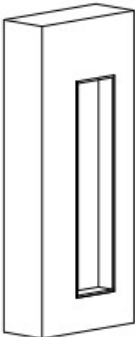
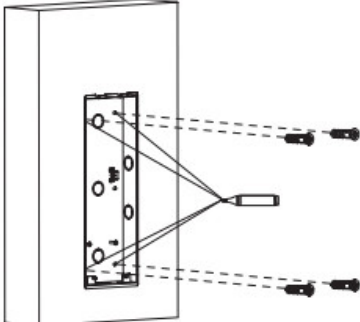
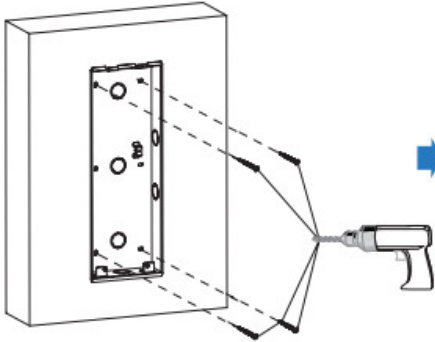

<p>Fix the wall-mounting box onto the embedded box (86) with two M4x30 screws, mark the positions of the four holes of the wall mounting box at the hole center.</p>	<p>Take off the box and drill the four marked holes using a 5 mm drill bit hand drill before inserting the plastic wall anchors into the drilled holes.</p>	<p>Place the wall mounting box closing up its four holes with their covers and then fix the wall mounting box on the wall with 4 x 20 screws to the plastic wall anchors.</p>

1.2 Without embedded junction box in the wall

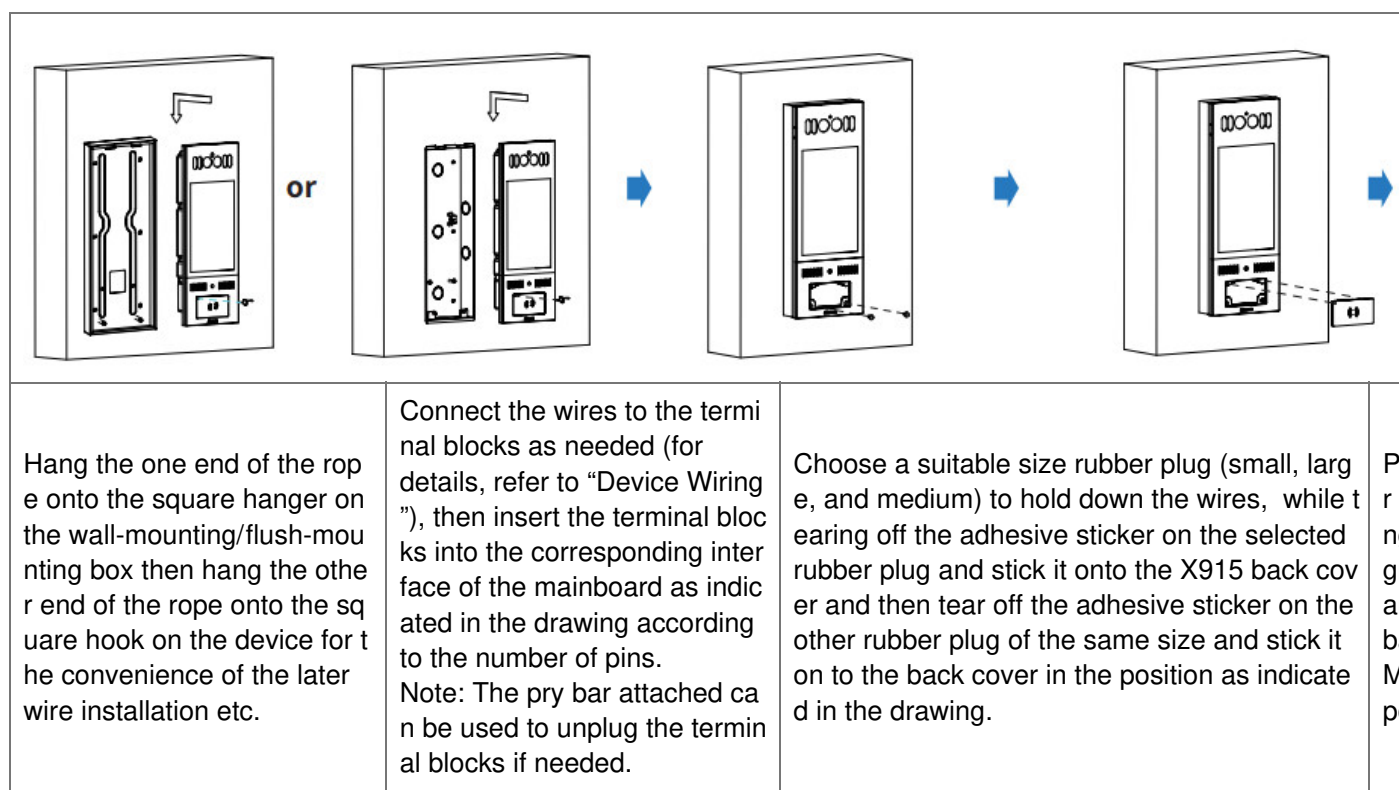
		
<p>According to the position of the wire on the wall, put the wall-mounting box closely onto the wall and mark the four positioning holes, while making sure that relative positions between the wall-mounting box and the wiring hole are correct.</p>	<p>Drill the marked holes using 5 mm drill bit hand drill before inserting a plastic wall anchor into the drilled holes.</p>	<p>Place the wall-mounting box close while lining up its four holes with drilled holes and then fix the wall by tightening four ST x 2 wall anchors.</p>

Note: It is suggested that you move the bottom edge of the square hole 10 mm away from the wiring hole on the wall as highlighted in green in the drawing.

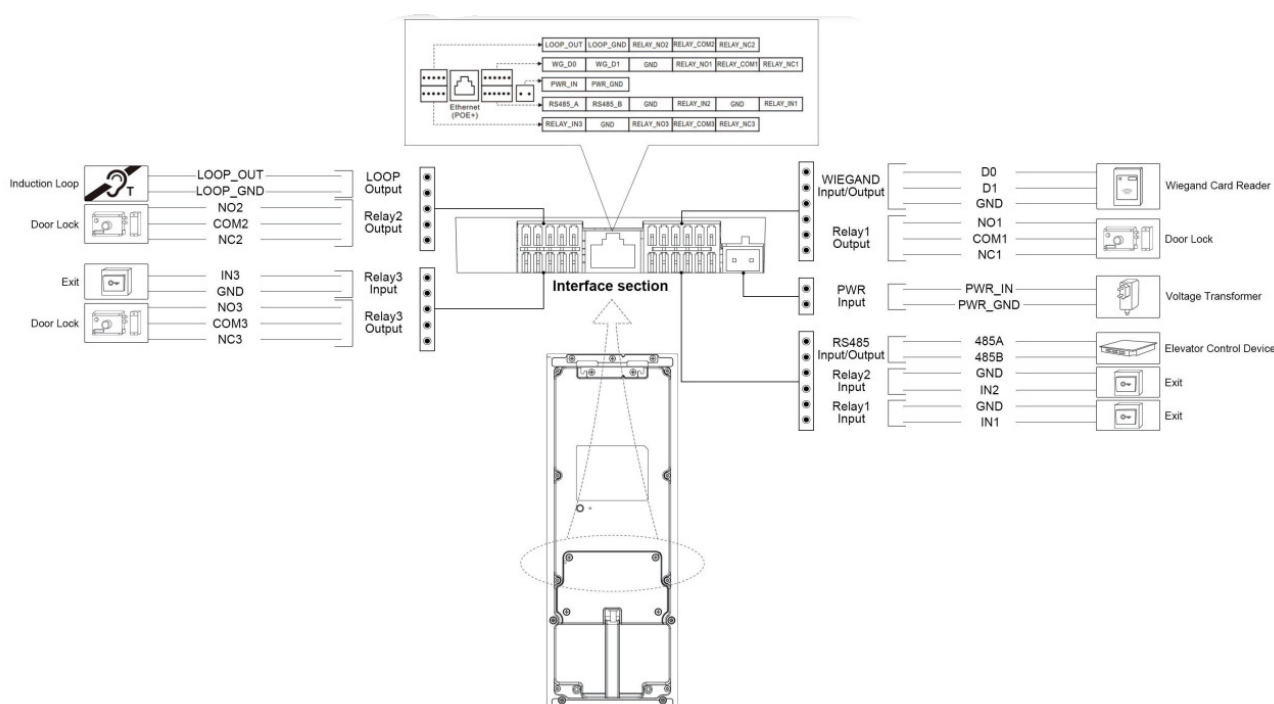
2. Flush-Mounting

			
<p>Cut out a square hole with the dimensions (height * width * depth = 337 * 123 * 43 mm).</p>	<p>Insert the flush-mounting box into the hole and mark the positions of the four holes of the flush-mounting box on the wall, then take off the box and drill the holes on the marked positions using 5 mm drill bit hand drill before inserting the plastic anchors into the drilled holes.</p>	<p>Break off the round knock-out wiring holes and lead the wires through the corresponding hole into the flush-mounting box, then press the flush-mounting box into the square hole. The upper and lower folded edges of the flush-mounting box must fit snugly against the wall. Then fix the box using the four plastic wall anchors and the four ST4 x20 screws.</p>	<p>Make sure the well tightened edges are in the gap between mounting box and wall. The next step.</p>

STEP 2 Back cover Installation

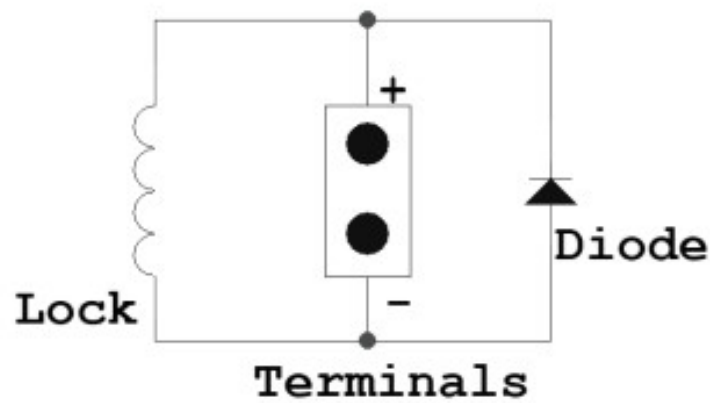


Device Wiring

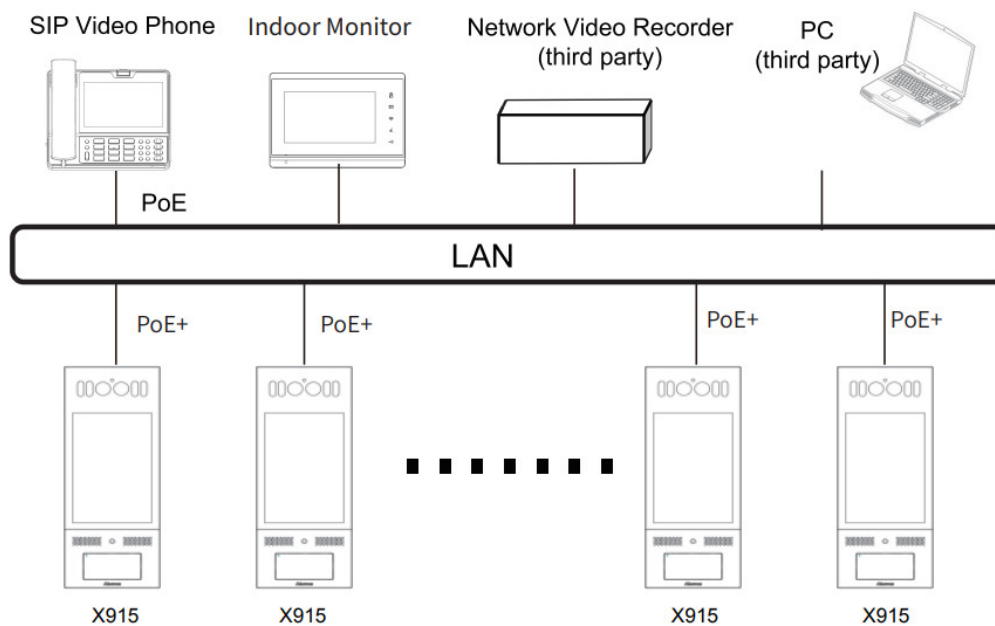


Warning

When you connect a device containing a coil, such as a relay or an electromagnetic lock, it is necessary to protect the intercom against voltage peak while switching off the induction load. For this way of protection, we recommend a diode 1 A / 200 V (included in the accessories) connected antiparallel to the device.



Application Network Topology



Configuration

1. IP address Checking: Press 9999 on the dial screen, then press 3888 to enter the system screen and click Info to check the device IP address. X915 uses DHCP by default.
2. Account Registration: On the web interface, go to the path Account -> Basic page to register and fill in the account information.
(please refer to user manual for more information)

Operation

Make a call:

Enter the IP or SIP number and press the Dial tab to make a call.

Receive a call:

X915 supports Auto Answer by default. Incoming calls from the indoor devices will be answered automatically.

Unlock by PIN:

Enter the PIN code on the home screen for door access.

Unlock by RF Card:

Place the configured RF card on the RF card reader area for door access.

Notice Information



<http://www.akuvox.com/>

Information contained in this document is believed to be accurate and reliable at the time of printing. This document is subject to change without notice, any update to this document can be viewed on Akuvox' s website: <http://www.akuvox.com>

© Copyright 2020 Akuvox Ltd. All rights reserved.

AKUVOX (XIAMEN) NETWORKS CO., LTD.

ADD: 10/F, NO.56 GUANRI ROAD, SOFTWARE PARK II, XIAMEN 361009, CHINA

www.akuvox.com

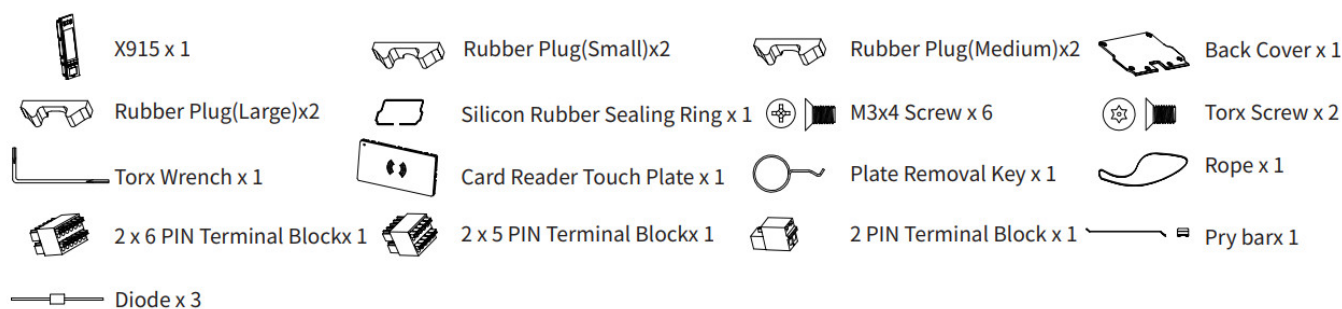


YS91500000

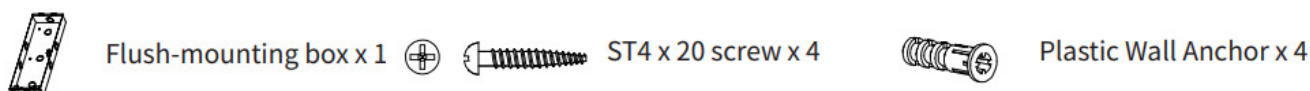
Unpacking

Before you be using the device, please check the version you obtained and ensure that the following items are included in the shipped box:

Mainframe Accessories :



Flush-mounting Accessories (Please find in In-Wall Installation Kit box):



Wall-mounting Accessories (Please find in On-Wall Installation Kit box):



Wall-mounting box x 1



M4 x 30 Screw x 2

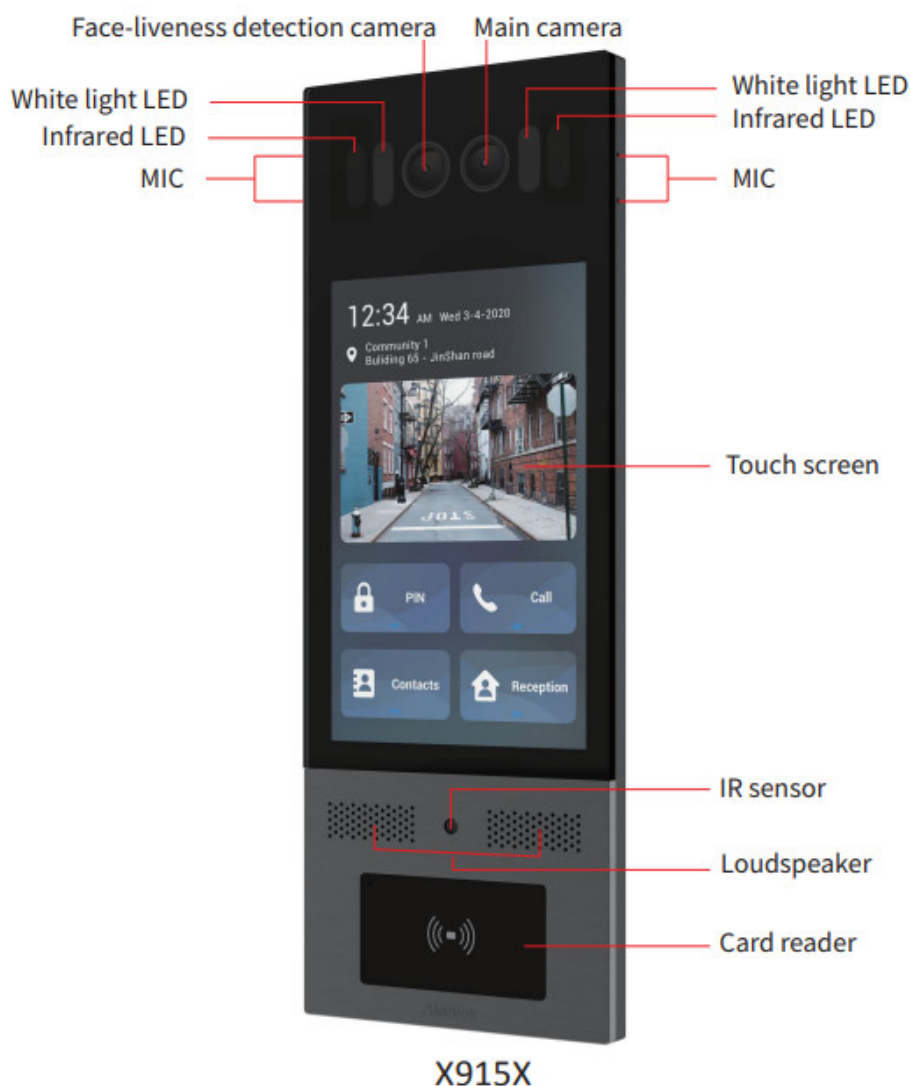


ST4 x 20 screw x 4



Plastic Wall Anchor x 4

Product Overview



Documents / Resources

	<p>Akuvox X915X IP Touchscreen Smart Door Intercom Unit [pdf] User Guide X915X, IP Touchscreen Smart Door Intercom Unit</p>
	<p>AKUVOX X915X IP Touchscreen Smart Door Intercom Unit [pdf] User Guide X915X, IP Touchscreen Smart Door Intercom Unit, X915X IP Touchscreen Smart Door Intercom Unit, Door Intercom Unit, Intercom Unit</p>

References

- [Akuvox | The Leader in Smart Intercom](#)

