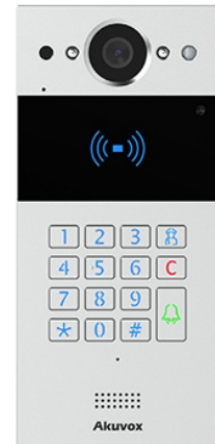


Akuvox

**Akuvox
R20K2-2 Wire
SIP Video
Intercom**



Akuvox R20K2-2 Wire SIP Video Intercom User Guide

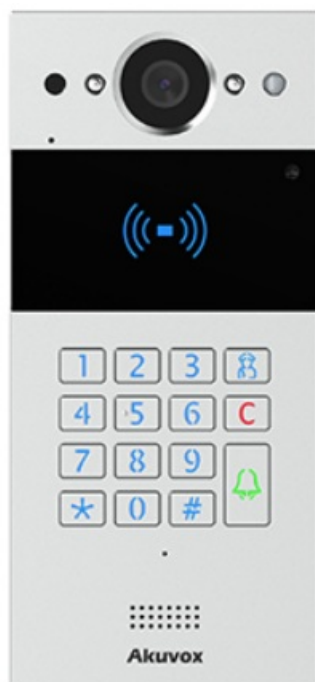
[Home](#) » [Akuvox](#) » [Akuvox R20K2-2 Wire SIP Video Intercom User Guide](#) 

Contents

- [1 Akuvox R20K2-2 Wire SIP Video Intercom](#)
- [2 Unpacking](#)
- [3 Product Overview](#)
- [4 Installation Environment](#)
- [5 Installation](#)
- [6 Flush-mounting](#)
- [7 Device Wiring](#)
- [8 Application Network Topology](#)
- [9 IP Announcement](#)
- [10 Configuration](#)
- [11 Operation](#)
- [12 Indicators](#)
- [13 Notice Information](#)
- [14 Documents / Resources](#)
 - [14.1 References](#)

Akuvox

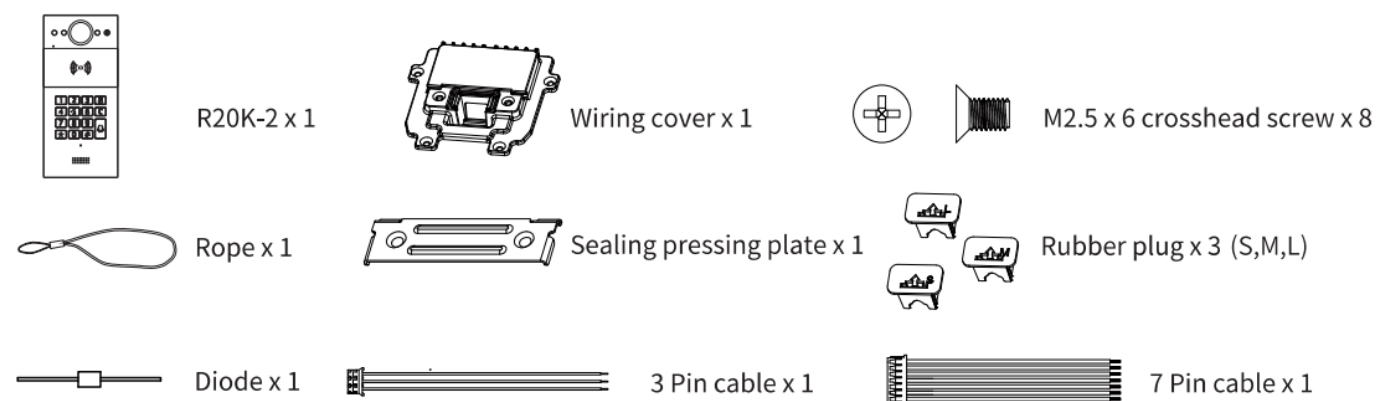
Akuvox R20K2-2 Wire SIP Video Intercom



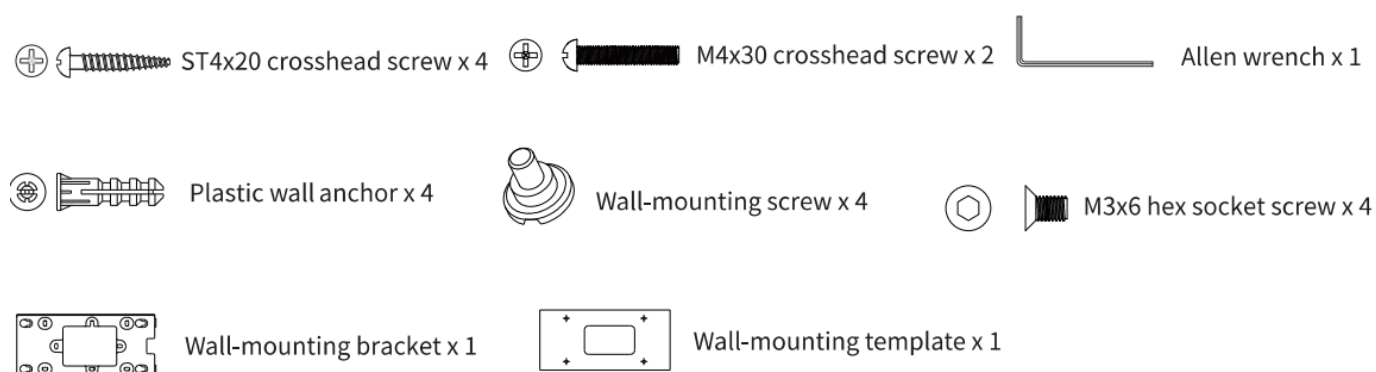
Unpacking

Before you begin using the device, please check the version you got and ensure that the following items are included in the shipped box:

Universal Accessories:



Wall-mounting Accessories :



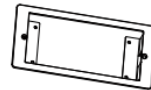
Flush-mounting Accessories :



Flush-mounting box x 1



M4x15 torx head screw x 2



Flush-mounting bracket



ST4x20 crosshead screw x 4

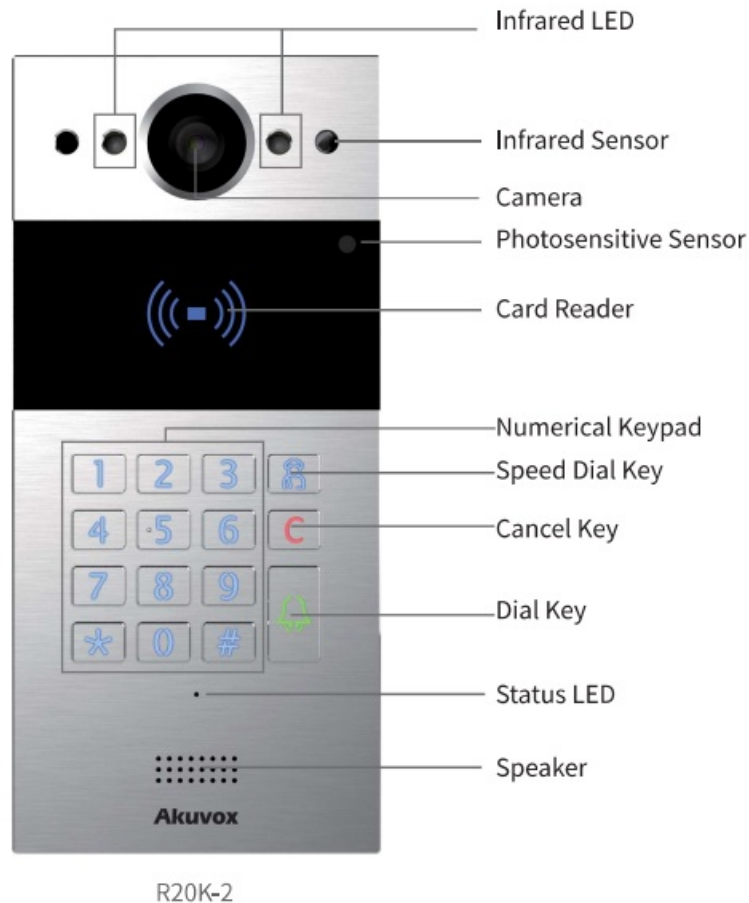


Plastic wall anchor x 4



Torx wrench x 1

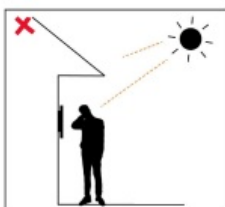
Product Overview



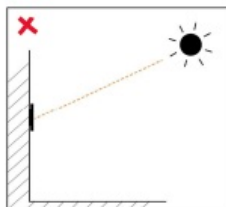
Installation Environment

Please do not place device under direct sunlight.

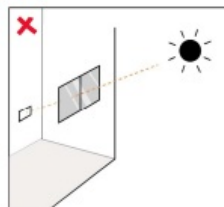
If installing the device indoors, please keep device at least 2 meters away from light, and at least 3 meters away from window and door.



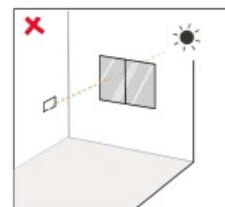
Backlight



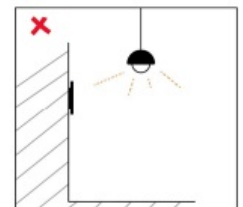
Direct sunlight



Direct sun
through window



Indirect sunlight
through window



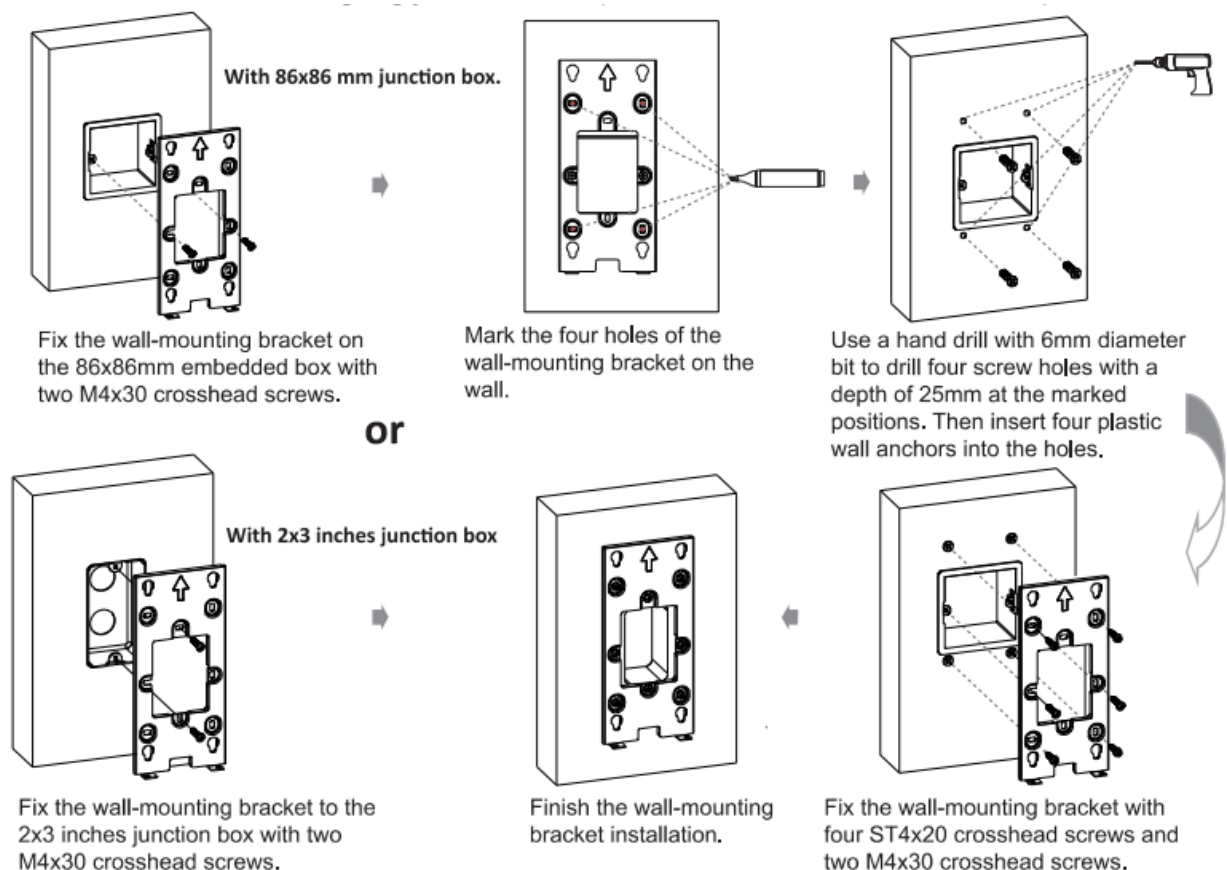
Close to light

Installation

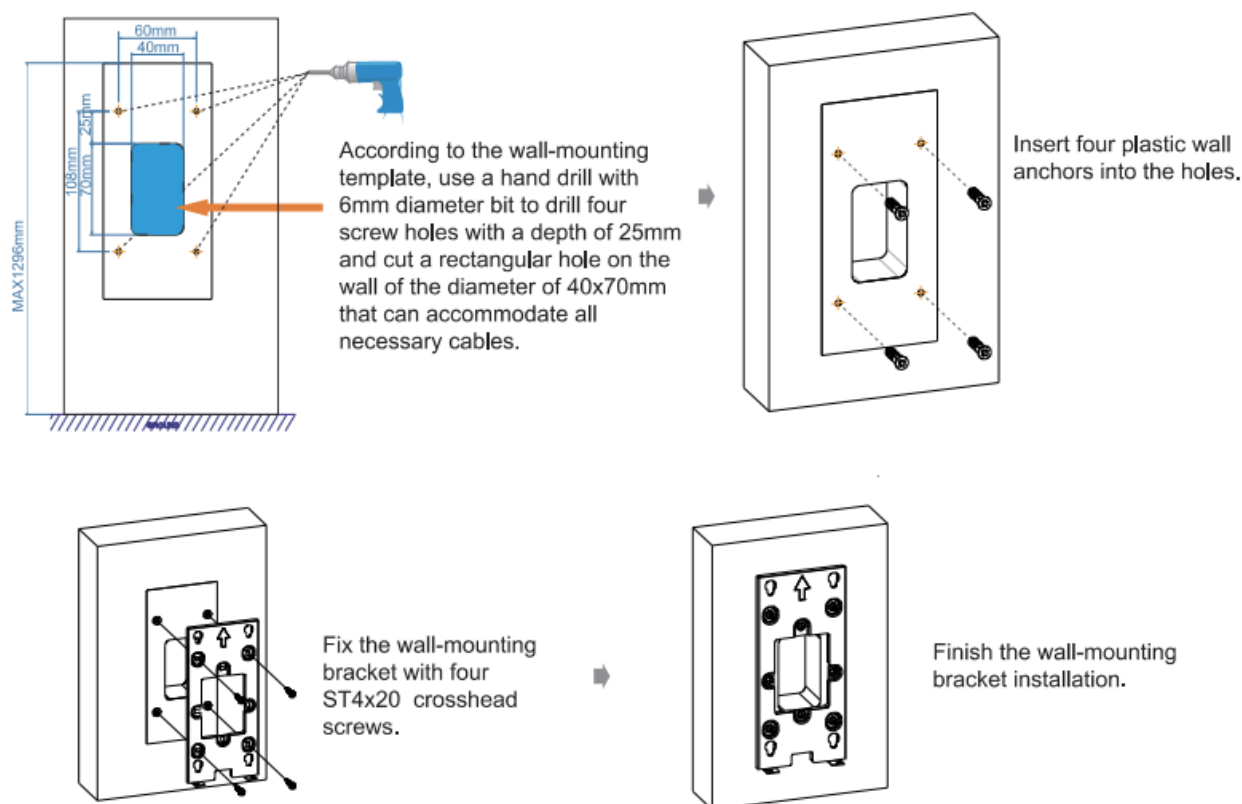
On-Wall Mounting

Step 1: Wall-mounting Bracket/Box Installation

1. With embedded one-gang junction box (86×86 mm or 2×3 inches in size) in the wall.



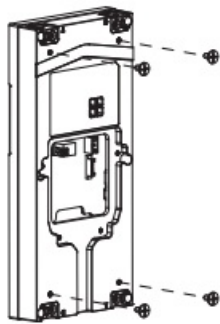
2. Without embedded junction box in the wall



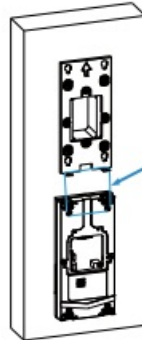
Step2: Wiring Cover Installation

- Install four wall-mounting screws to the back of the device.
- For convenient wiring, hang R20K-2 on the wall-mounting bracket with rope.

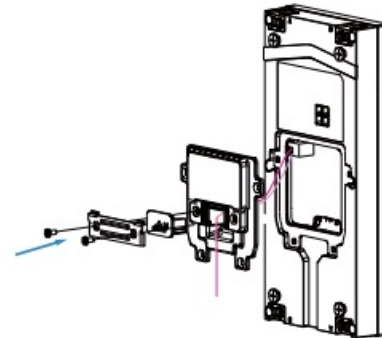
- Make cables go through the wiring cover, connecting to the corresponding interfaces of the main board. Select a suitable size rubber plug to push all the cables into the wiring cover. Fix sealing pressing plate to the wiring cover with two M2.5×6 crosshead screws.
- Fasten the wiring cover with four M2.5×6 crosshead screws.
- Insert the four wall-mounting screws on the device into the corresponding holes on the wall-mounting bracket, and then press down to slide the wall-mounting screws into the groove. Then use the allen wrench to tighten the device with two M3x6 hex socket screws.
- Installation is completed, please remove the protect film.



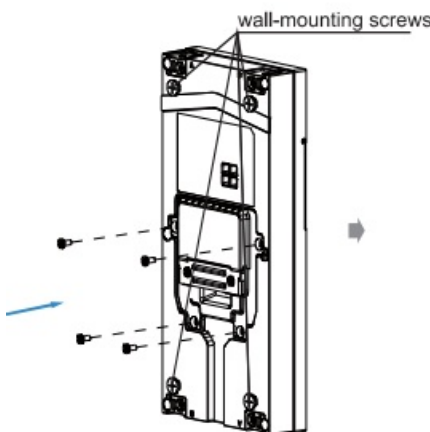
Install four wall-mounting screws to the back of the device.



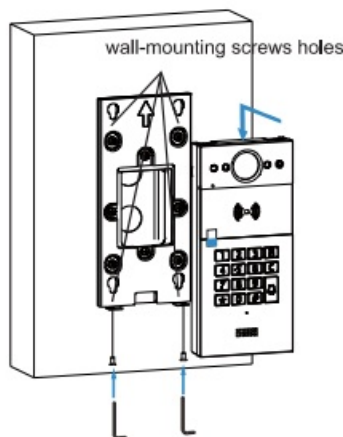
For convenient wiring, hang R20K-2 on the wall-mounting bracket with rope.



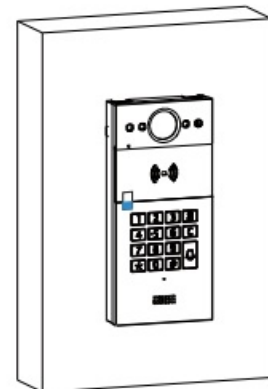
Make cables go through the wiring cover, connecting to the corresponding interfaces of the main board. Select a suitable size rubber plug to push all the cables into the wiring cover. Fix sealing pressing plate to the wiring cover with two M2.5x6 crosshead screws.



Fasten the wiring cover with four M2.5x6 crosshead screws.



Insert the four wall-mounting screws on the device into the corresponding holes on the wall-mounting bracket, and then press down to slide the wall-mounting screws into the groove. Then use the allen wrench to tighten the device with two M3x6 hex socket screws.

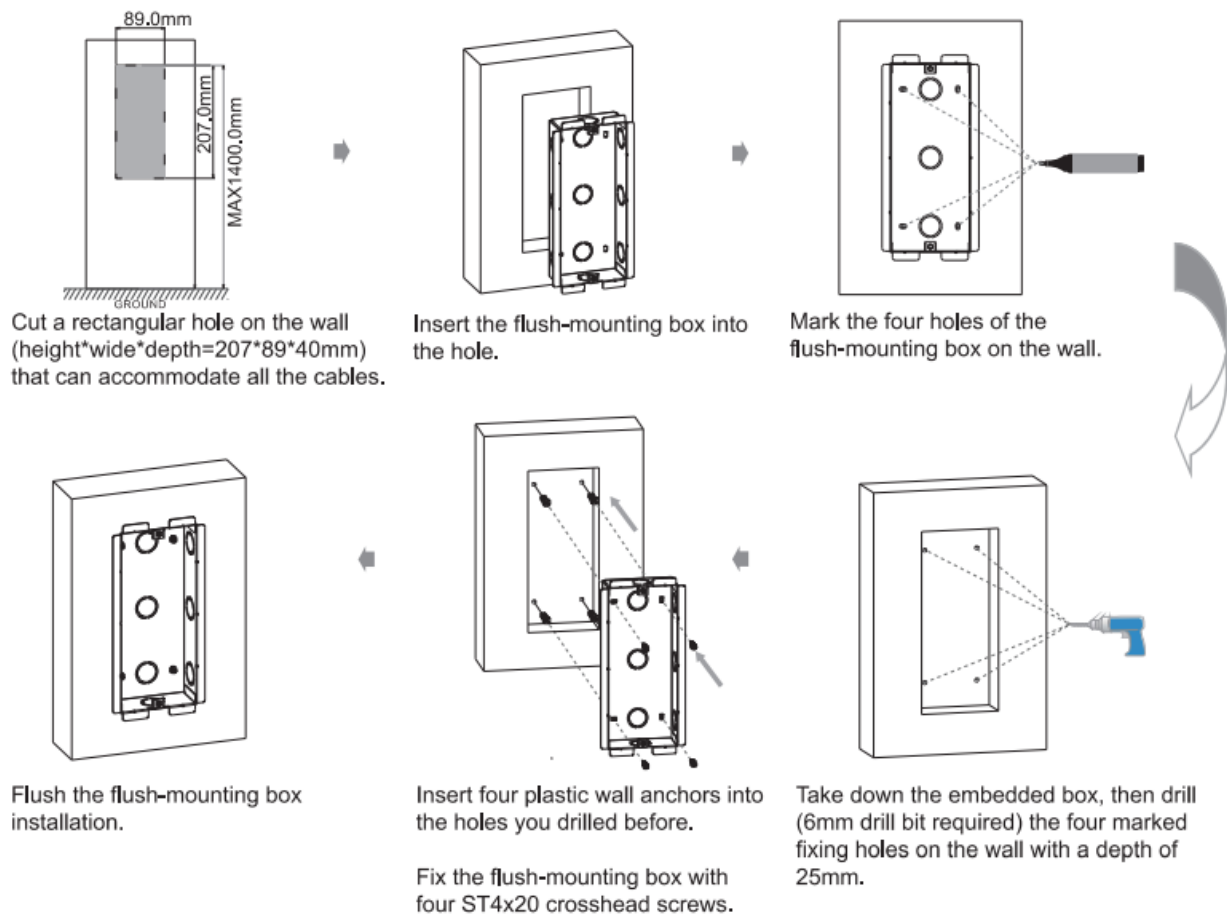


Installation is completed, please remove the protect film.

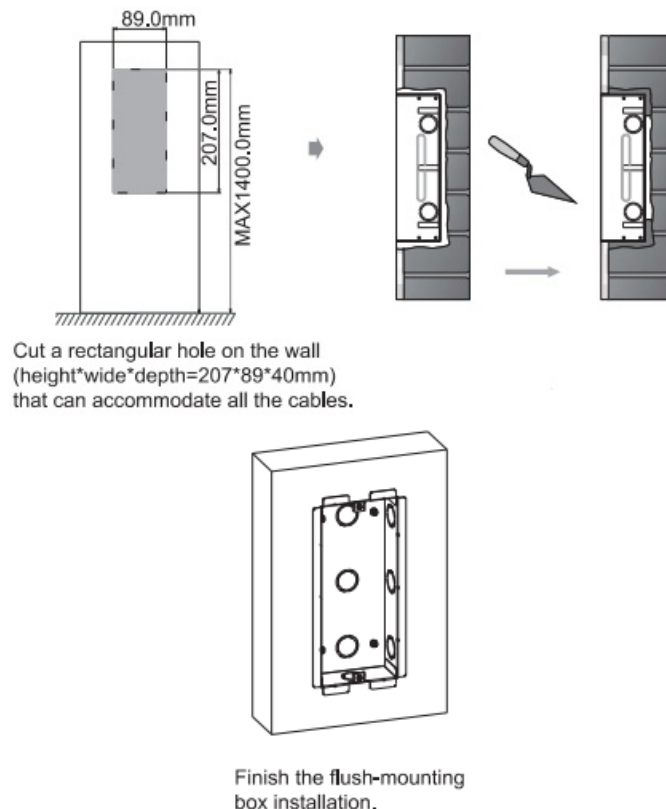
Flush-mounting

Step 1: Flush-mounting Bracket/Box Installation

1. Normal installation



2. Or you can choose another simple method without fixing ST4x20 screws



1. Use cement or non-corrosive structural adhesives to fill the gap between the wall and the flush-mounting box. Wait the adhesive material desiccation, go to the next step.

Waterproof Tips:

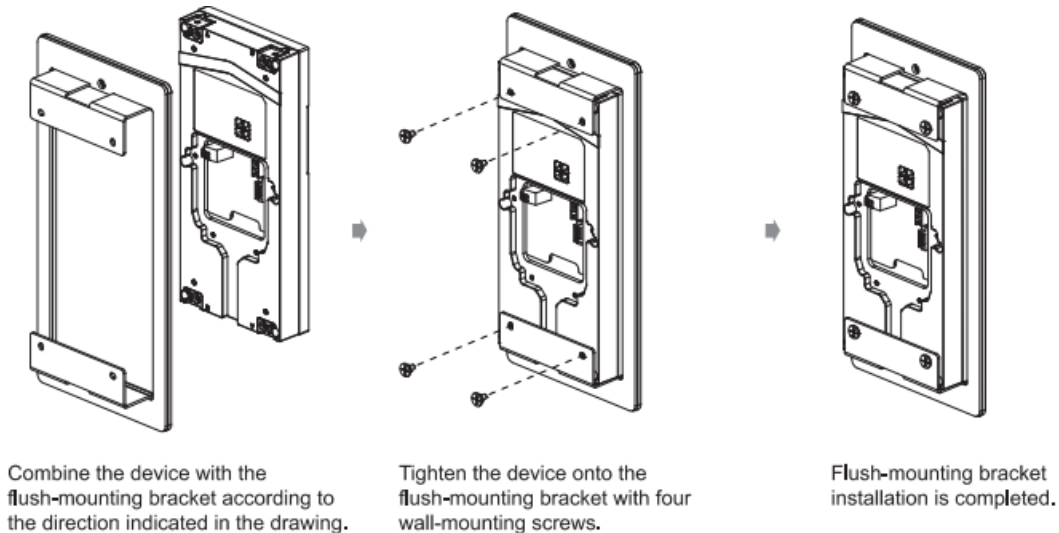
For flush-mounting installation, it is recommended to fill the gaps around the embedded box for waterproofing (to prevent water from entering the gap in the wiring cover of the door Phone

For phone). wall-mounting installation, it is recommended to lock the wall-mounting bracket and the wall

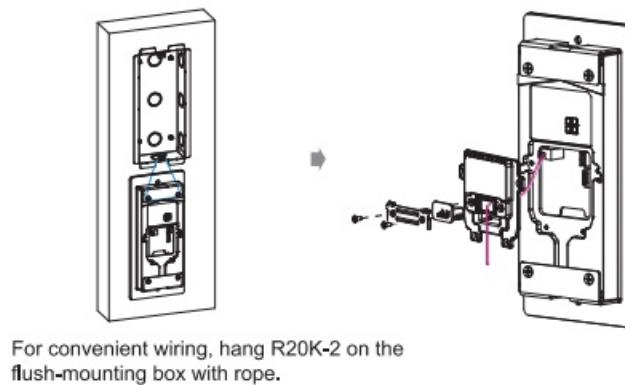
so that the EVA pasted on the bottom of the wall-mounting bracket is close to the wall without a gap (to prevent water from entering the gap in the wiring cover of the door phone). Or it is recommended to use a rain cover.

Step2: Flush-mounting Bracket Installation

- Combine the device with the flush-mounting bracket according to the direction indicated in the drawing.
- Tighten the device onto the flush-mounting bracket with four wall-mounting screws.
- Flush-mounting bracket installation is completed.



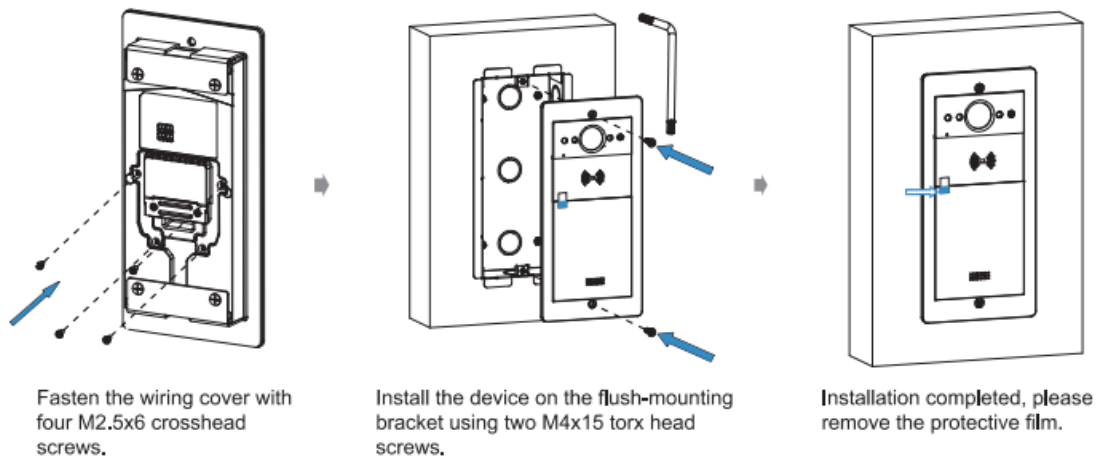
Step3: Wiring Cover Installation



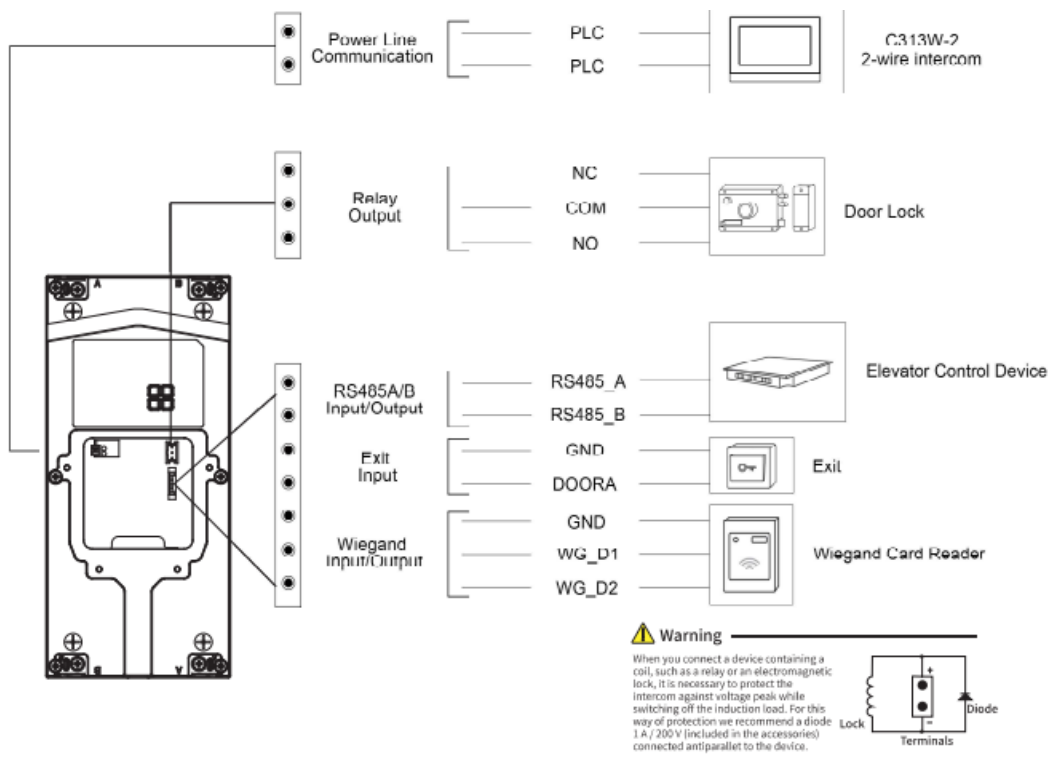
Make cables go through the wiring cover, connecting to the corresponding interfaces of the main board. Select a suitable size rubber plug to push all the cables into the wiring cover. Fix sealing pressing plate to the wiring cover with two M2.5×6 crosshead screws.

Note: In the case of one network cable or less than 6 signal cables, use S-size rubber plugs. In the case of 7 to 10 signal cables, use M-size rubber plugs. When there are more than 11 signal cables, please use L-size wiring rubber plug.

- Fasten the wiring cover with four M2.5×6 crosshead screws.
- Install the device on the flush-mounting bracket using two M4×15 torx head screws.
- Installation completed, please remove the protective film.

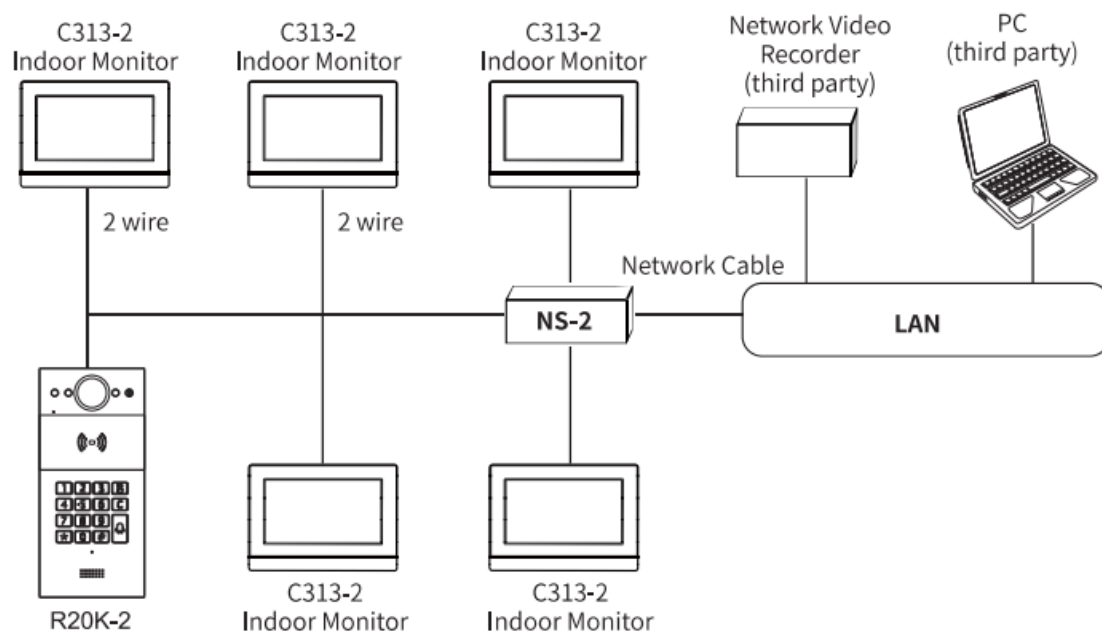


Device Wiring



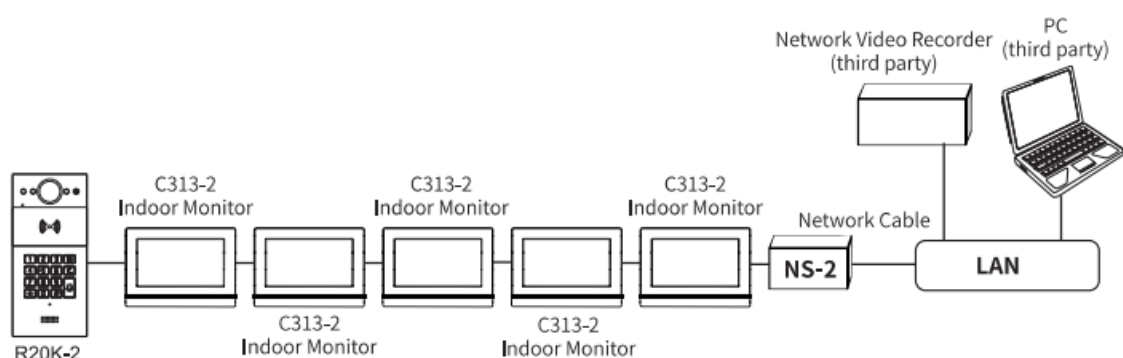
Application Network Topology

Topology-I: each device connect to NS-2 separately.



Adapter Voltage	Cable Model	Farthest Distance	Adapter Voltage	Cable Model	Farthest Distance
48V	24awg	300m	24V	24awg	150m
	20awg	300m		20awg	250m
	18awg	300m		18awg	300m

Topology-2: devices are series connection with NS-2.



Adapter Voltage	Cable Model	Farthest Distance	Adapter Voltage	Cable Model	Farthest Distance
48V	24awg	100m/6devices 150m/4devices 200m/3devices	24V	24awg	50m/3devices 150m/1device
	20awg	250m/6devices 300m/5devices		20awg	100m/3devices 150m/2devices 250m/1device
	18awg	300m/6devices		18awg	100m/6devices 150m/4devices 200m/3devices 300m/2devices

Note: When using different cable, the maximum number of devices can connect to NS-2 under the different maximum distances which can refer to the above table. For example, when using a 24awg cable, if the farthest distance is 100m, the maximum number of devices connect to NS-2 is 6.

Note: When using different cable, the maximum number of devices can connect to NS-2 under the different maximum distances which can refer to the above table. For example, when using a 24awg cable, if the farthest distance is 100m, the maximum number of devices connect to NS-2 is 6.

IP Announcement

1. While R20K-2 starts up normally, press *3258*, voice system will enter IP announcement mode.
2. In announcement mode, the IP address will be announced periodically.
3. Press Cancel Button again to quit the announcement mode.
4. In announcement mode, phone announces "IP 0.0.0.0" if no IP address is gained.

Configuration

1. Access the Web UI: Input the IP address into web browser to configure the phone.
2. Account Registration: On web UI, go to the path: Account> Basic page Register Account and fill in the account information. (Please refer to user manual for more information)
3. Configure the Manager button: On web UI, go to the path: Intercom> Basic> Manager Dial to configure the call number.
4. Configure the code to open the relay: On web UI, go to the path: Intercom> Relay> Relay ID/DTMF and choose the DTMF code number in corresponding area.

Operation

• Make a call:

Press the manager button to call indoor SIP Phone.



• Receive a call:







R20K-2 supports Auto Answer by default. Incoming call from indoor device will be answered automatically.

• Unlock:

- During the talk, called party can press a pre-configured code number to unlock the door.
- Scan the predefined RFID card nearby the card reader to unlock.
- Press the predefined pin code to unlock.

Indicators

 Light ON
  Light OFF

Name	Status	Description
Status indicator	Blue	 Normal status
		 Calling
	Red	 Network is unavailable /Restarting / Initializing
	Green	 Talking on a call
		 Receiving a call
	Red/Purple	 Firmware upgrading

Note: For more LED settings, please refer to R20K-2 webUI: Intercom -> LED Setting.

Notice Information

- Akuvox R20K-2 firmware contains third-party open source software under the terms of the GNU General Public License(GPL). Akuvox is committed to meeting the requirements of the GNU General Public License (GPL) and will make all required source code available.
- The source code of software under the terms of GNU GPL can be downloaded online:
<http://www.akuvox.com/gpl>.
- Information contained in this document is believed to be accurate and reliable at the time of printing. This document is subject to change without notice, any update to this document can be viewed on Akuvox' s website: <http://www.akuvox.com> © Copyright 2023 Akuvox Ltd. All rights reserved.

AKUVOX (XIAMEN) NETWORKS CO., LTD.

Add.: 10/F, NO.56 GUANRI ROAD, SOFTWARE PARK 11, XIAMEN 361009, CHINA

www.akuvox.com

Documents / Resources

	<p>Akuvox R20K2-2 Wire SIP Video Intercom [pdf] User Guide TZ-SM-002398 V1.1, V1.1, R20K2-2 Wire SIP Video Intercom, R20K2-2, Wire SIP Video Intercom, SIP Video Intercom, Video Intercom</p>
--	---

References

- [User Manual](#)

[Manuals+](#), [Privacy Policy](#)

This website is an independent publication and is neither affiliated with nor endorsed by any of the trademark owners. The "Bluetooth®" word mark and logos are registered trademarks owned by Bluetooth SIG, Inc. The "Wi-Fi®" word mark and logos are registered trademarks owned by the Wi-Fi Alliance. Any use of these marks on this website does not imply any affiliation with or endorsement.