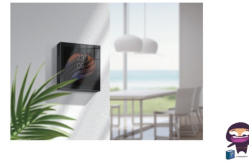


akubela PS51-HEATING-EU Most Versatile Smart Panel



akubela PS51-HEATING-EU Most Versatile Smart Panel Installation Guide

[Home](#) » [akubela](#) » **akubela PS51-HEATING-EU Most Versatile Smart Panel Installation Guide** 

Contents

- [1 akubela PS51-HEATING-EU Most Versatile Smart Panel](#)
- [2 Before We Start](#)
- [3 In The Box](#)
- [4 Check Compatibility](#)
- [5 Identify wires](#)
- [6 Installation](#)
- [7 Documents / Resources](#)
 - [7.1 References](#)
- [8 Related Posts](#)



akubela PS51-HEATING-EU Most Versatile Smart Panel



Specifications

- Model: PS51-HEATING-EU
- Maximum Load Capacity: 16A, 4000W at 250VAC
- Power Requirement: 90-250VAC, 50/60 Hz
- Wi-Fi Connectivity: 2.4GHz and 5GHz IEEE802.11 b/g/n standards

Installation

Your first time installing this product may take up to 40 minutes. Follow the steps provided in the manual for a successful installation.

Safety Precautions

Ensure to turn OFF the power to the circuit and follow all safety precautions before proceeding with the installation. If unsure, seek the help of a qualified electrician.

Positioning

The heating model of HyPanel must be positioned downstream from the circuit breaker to ensure effective overheating protection.

Working Space

Make sure HyPanel is compatible with the location where you want to install it. Follow the ADA Compliance Requirement for positioning.

Maximum Load

The device has a maximum resistive load capacity of 16A, supporting a power load of up to 4000W at 250VAC.

Power Requirement

HyPanel can be used in countries with varying standard voltages, from 90V to 250 V AC, at a frequency of either 50Hz or 60Hz.

Welcome!

This guide applies to PS51-HEATING-EU model of HyPanel.

Before We Start

Your first time installing this product may take up to 40 minutes. You'll get faster after each installation.

Warning

The installation procedure involves handling high voltage wiring. Please be careful. To avoid serious personal injury, death, or property damage, turn OFF the power to the circuit and follow all safety precautions before proceeding.

Working with electricity can be dangerous. If you are unsure about, or uncomfortable with the installation, seek the help of a qualified electrician.

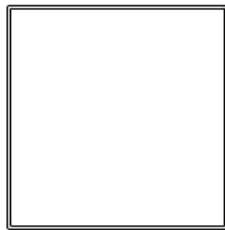
Warning

Keep the device and all its parts out of the reach of children. The small parts or accessories contained may be a choking hazard to them.

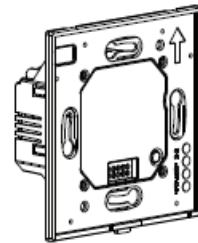
Important Note

The heating model of HyPanel must be positioned downstream from the circuit breaker to ensure effective overheating protection.

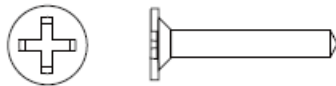
In The Box



HyPanel X 1



Flush Mounted Module x 1



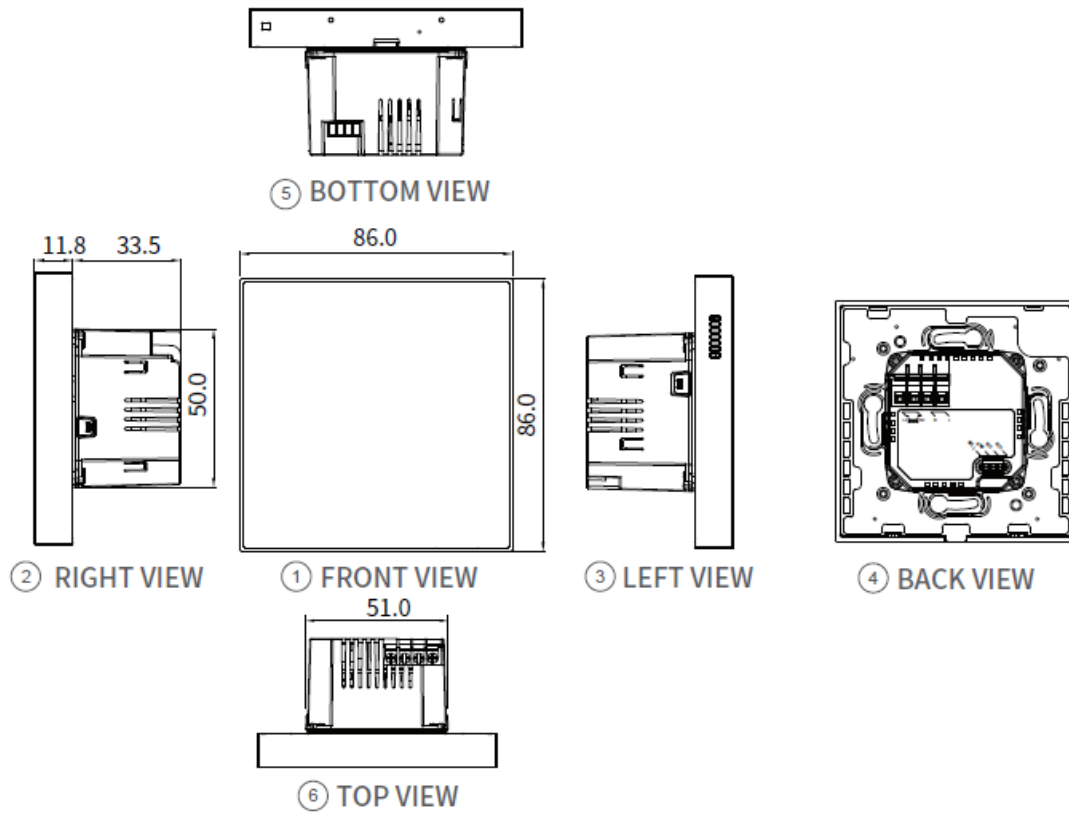
**ST3x20mm Phillips Self Tapping
Screw x 2**



NTC Thermistor X 1

Check Compatibility

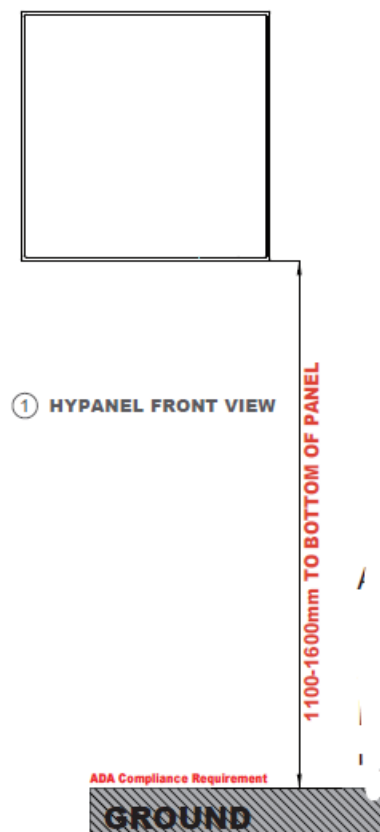
Product dimensions (mm)

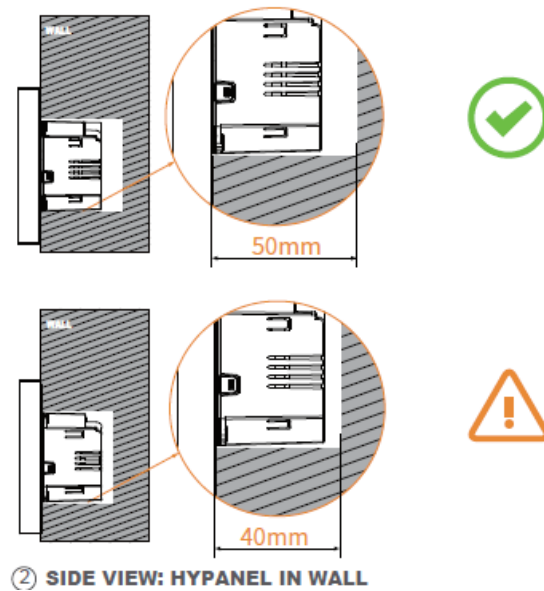


A

Working space

Make sure HyPanel is compatible with the location where you want to install it.





② SIDE VIEW: HYPANEL IN WALL

A 50mm(2 inches) deep electrical box is highly recommended for ease of installation. In some scenarios, especially when the wires can be pushed back into the wall far enough, it may be possible to use a 40mm(1.6 inches) deep box.

Maximum load

The device has a maximum resistive load capacity of 16A, supporting a power load of up to 4000W at 250VAC.

90-250VAC, 50/60 Hz power required

HyPanel can be used in countries with varying standard voltages, from 90V to 250 V AC, at a frequency of either 50Hz or 60Hz.

Wire sizes for different connections

- RS485 and NTC: Recommended wire size is 0.14mm²-0.75mm²(26-18AWG).
- L1 and N1: Maximum wire size should be 2.5mm²(14AWG).

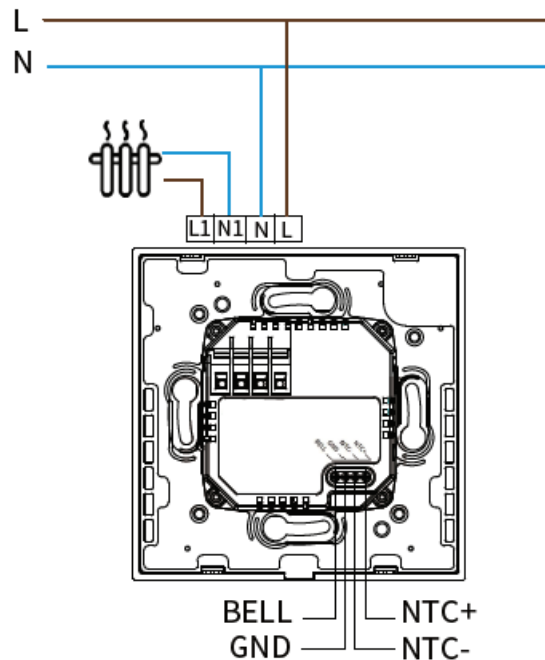
Support Wi-Fi connections

HyPanel supports Wi-Fi connectivity on both 2.4GHz and 5GHz frequency bands, complying with the IEEE802.11 b/g/n standards.

Warning

Turn OFF the circuit breaker before wiring and proceeding! Always use a voltage detector to verify the power is OFF before wiring and installation!

Identify wires



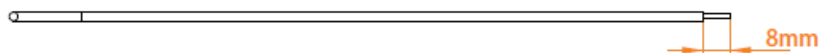
- Neutral wire(N) typically comes from the wall.
- Line wire(L) provides 90-250 Volts of power to HyPanel.
- Load wires(L1) that connect the HyPanel to the heating thermostat or other devices.
- BELL and GND are used to link a door bell. Not required if no bell is used.
- NTC+ and NTC- are for the thermistor lead connections. Not required if no thermistor is used.

Connect wires

1. Strip and straighten wires

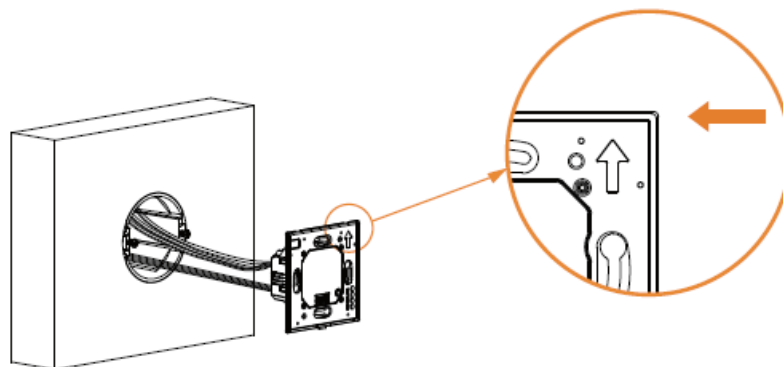
Wires connected to HyPanel should be $1.5\text{mm}^2 \sim 2.5\text{mm}^2$ in size and have stripped and straight ends.

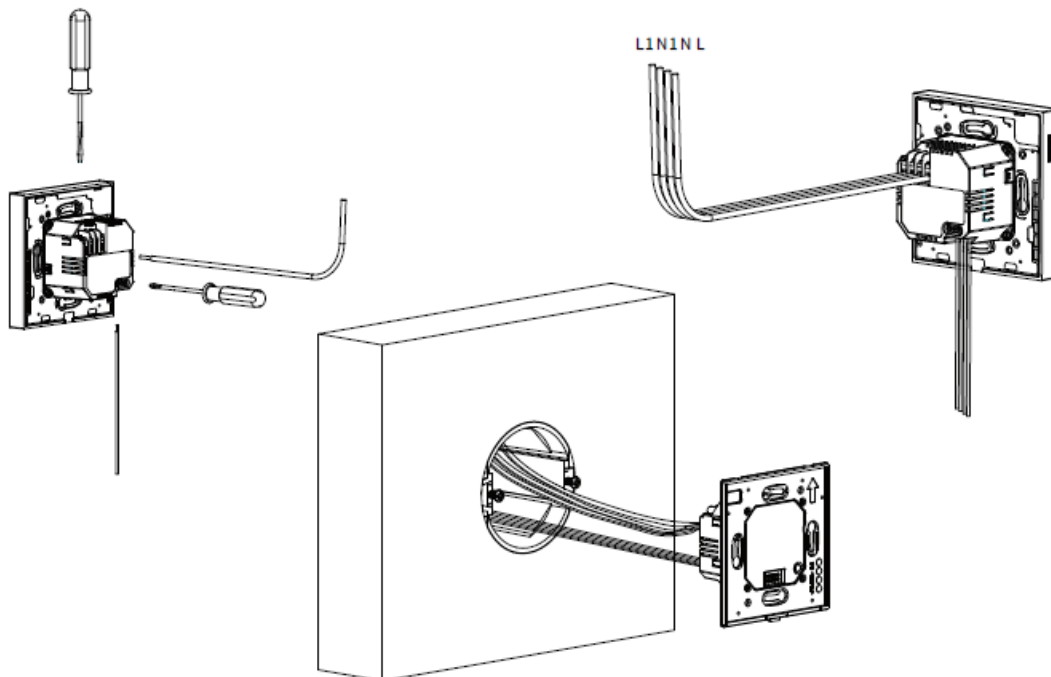
Remove the plastic sheathing of the wire, and make sure the exposed wire ends measure approximately 8 mm (5/16 inch) in length.



2. Connect all wires

Always make sure the arrow on the front of the flush mounted module is pointing up.



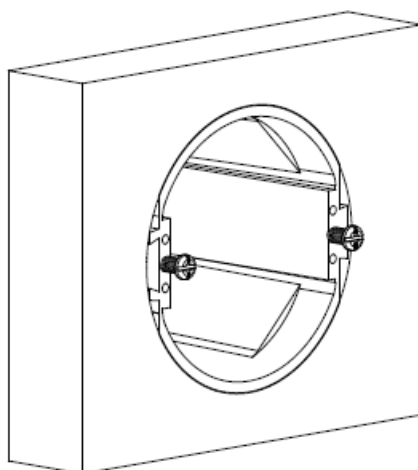


Plug the wires to the corresponding terminals on the back of the flush mounted module.

- Tighten the screws clockwise with a flat-head screwdriver until wires are secure.
- Double check by gently tugging on each wire.
- To use a thermistor, plug the NTC cable into the NTC+/- terminals.
- To connect with a door bell, connect the wires to the BELL and GND terminals respectively.

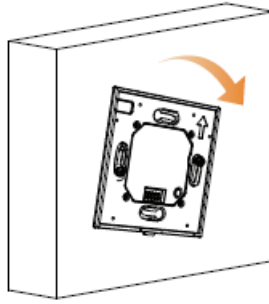
Installation

1. Insert screws

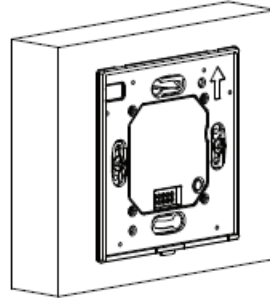


- Insert the supplied screws into the designated holes on the electrical box.
- Change the torque on the electric screwdriver to 5kgf.cm.
- Turn screws clockwise with the screwdriver.
- Do not fully tighten the screws. The screw head must protrude at least 3 mm (1/8 inch) from the wall surface.

2. Install flush mounted module

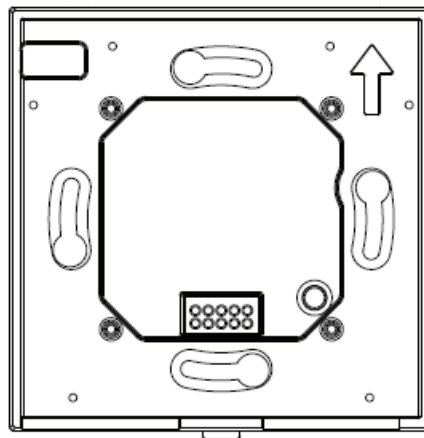


- Attach the flush mounted module to the electrical box. The screws should go through the holes on the module.



- Adjust the module to be level and ensure it is flush against the wall. Tighten the screws to attach the module to the wall, taking care not to over-tighten them.

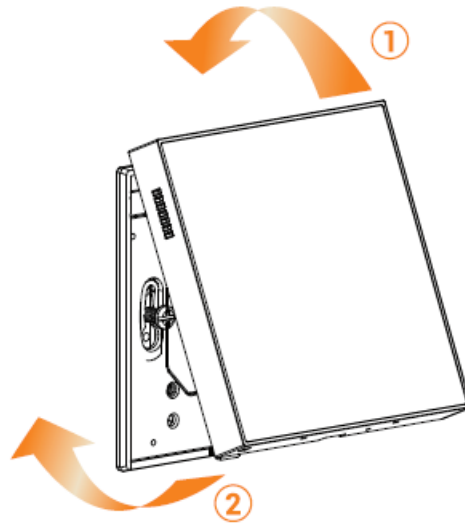
3. Test connected devices



- Turn on the circuit breaker to provide power to the flush mounted module.
- Press the button on the module to check if the connected devices can work.
If the devices do not turn on/off, do NOT install the panel. Turn the power off and re-check the wire connections.

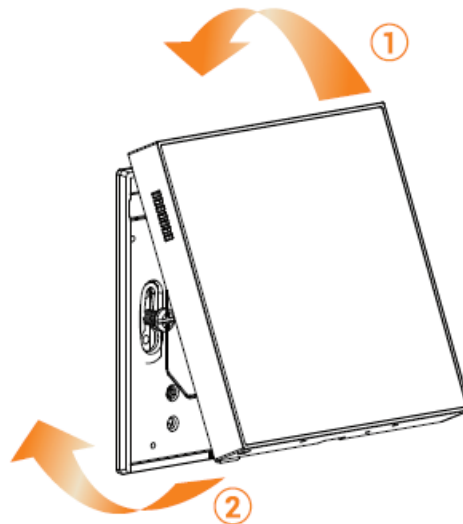
4. Install panel

Turn OFF the circuit breaker before you install the panel.



- Position the panel at a tilt as the picture shows.
- Press the panel into the flush mounted module until it clicks.

Turn OFF the circuit breaker before you install the panel.



- Position the panel at a tilt as the picture shows.
- Press the panel into the flush mounted module until it clicks.

Congratulations!

You are done with the HyPanel installation! Start your smart home journey with Akubela now!

Get Help

For help or more assistance,
contact us at: <https://ticket.akuvox.com/>

For videos, guides, and additional product formation, visit us at: <https://knowledge.akuvox.com>

Documents / Resources



[akubela PS51-HEATING-EU Most Versatile Smart Panel](#) [pdf] Installation Guide
PS51-HEATING-EU Most Versatile Smart Panel, PS51-HEATING-EU Most Versatile Smart Panel, Most Versatile Smart Panel, Versatile Smart Panel, Smart Panel, Panel

References

-  [Akuvox](#)
-  [Support : Technical Support](#)
- [User Manual](#)

[Manuals+.](#) [Privacy Policy](#)

This website is an independent publication and is neither affiliated with nor endorsed by any of the trademark owners. The "Bluetooth®" word mark and logos are registered trademarks owned by Bluetooth SIG, Inc. The "Wi-Fi®" word mark and logos are registered trademarks owned by the Wi-Fi Alliance. Any use of these marks on this website does not imply any affiliation with or endorsement.