



akubela PG71-R2-EU HyPanel Pro Android 10 Indoor Unit Installation Guide

[Home](#) » [akubela](#) » akubela PG71-R2-EU HyPanel Pro Android 10 Indoor Unit Installation Guide 

akubela PG71-R2-EU HyPanel Pro Android 10 Indoor Unit



Contents

- 1 Welcome!
- 2 Before We Start
- 3 In the Box
- 4 Check Compatibility
- 5 Installation
- 6 Wiring
- 7 Connect wires
- 8 Get Help
- 9 Documents / Resources
 - 9.1 References
- 10 Related Posts

Welcome!

This guide applies to the following models of HyPanel Pro: PG71-R2-EU and PG71N-R2-EU.

Before We Start

Your first time installing this product may take up to 40 minutes. You'll get faster after each installation.



Warning!

The installation procedure involves handling high voltage wiring. Please be careful. To avoid serious personal injury, death, or property damage, turn OFF the power to the circuit and follow all safety precautions before proceeding.

Working with electricity can be dangerous. If you are unsure about, or uncomfortable with the installation, seek the help of a qualified electrician.



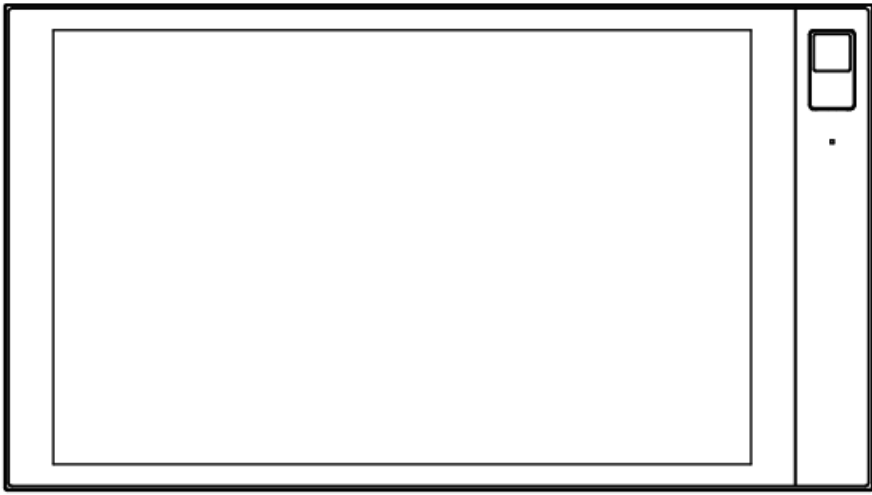
Warning!

Keep the device and all its parts out of the reach of children.

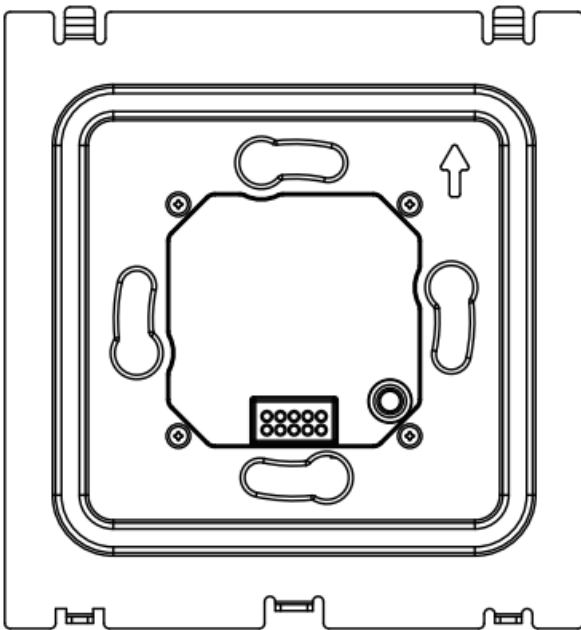
The small parts or accessories contained may be a choking hazard to them.

In the Box

- HyPanel Pro x1



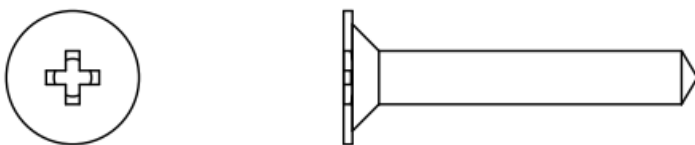
- Flush Mounted Module x 1



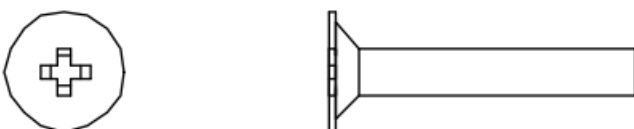
- Hex Key x 1



- M3x20mm Phillips Self Tapping Screw x 2



- M4x20mm Phillips Machine Screw x 2



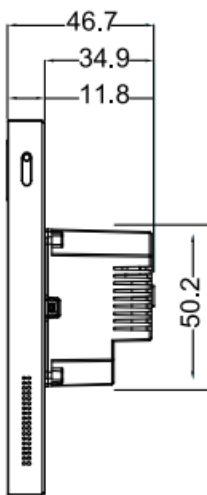
Check Compatibility

Product dimensions

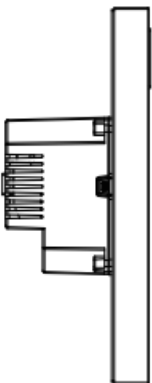
1. FRONT VIEW



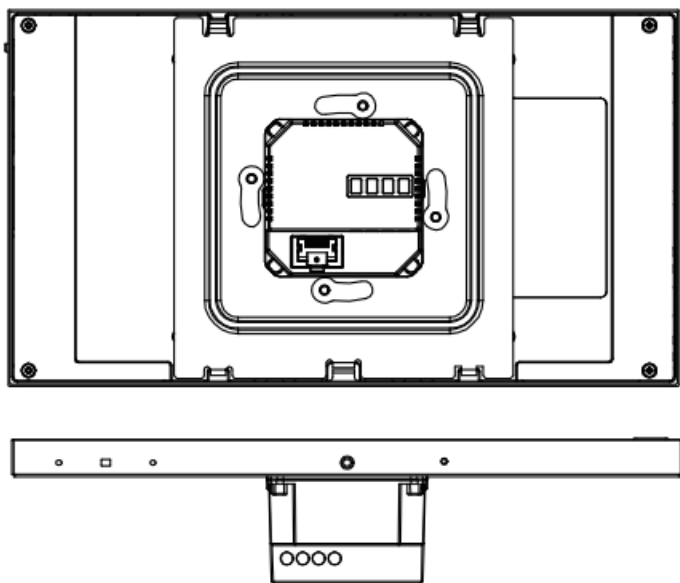
2. RIGHT VIEW



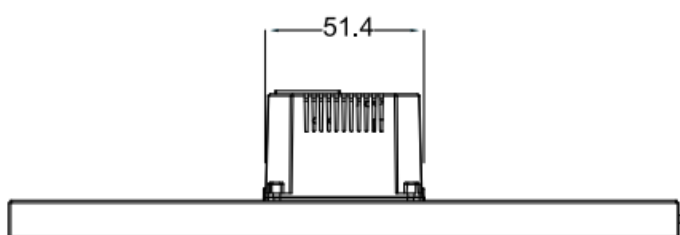
3. LEFT VIEW



4. BACK VIEW

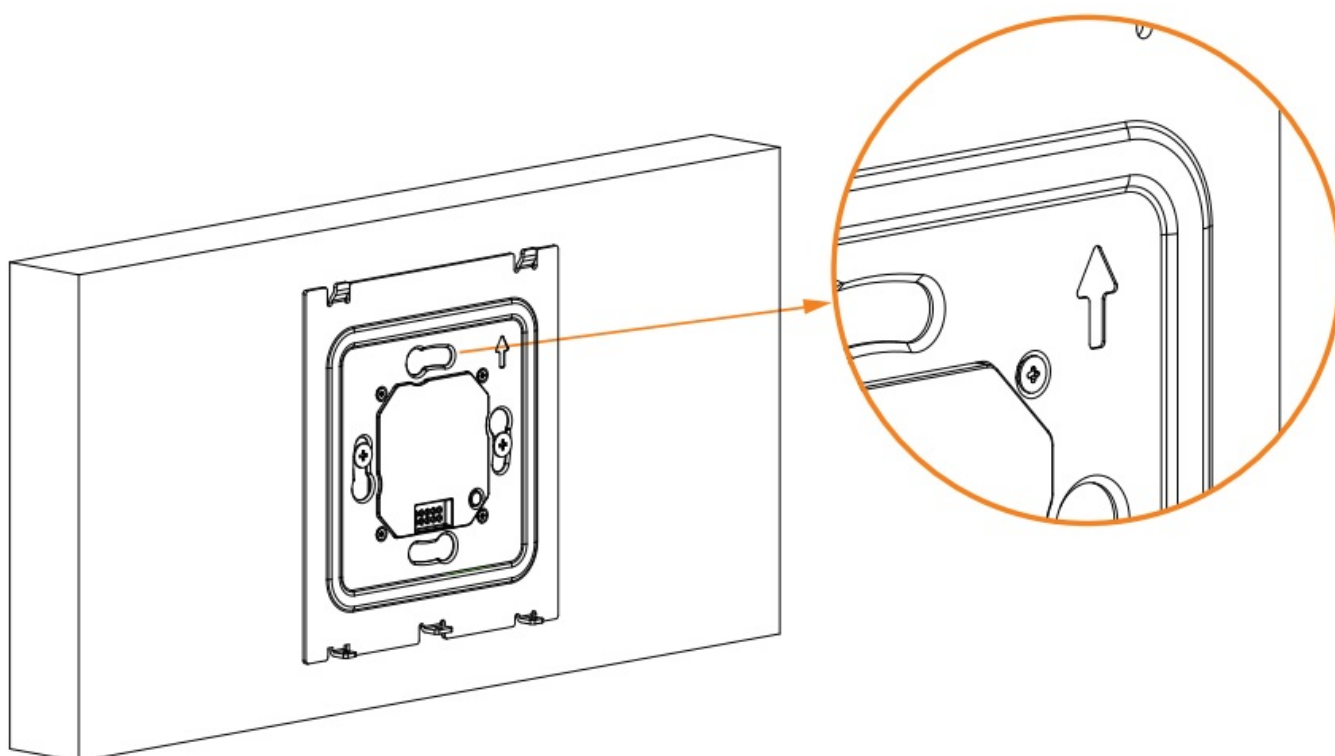


5. TOP VIEW



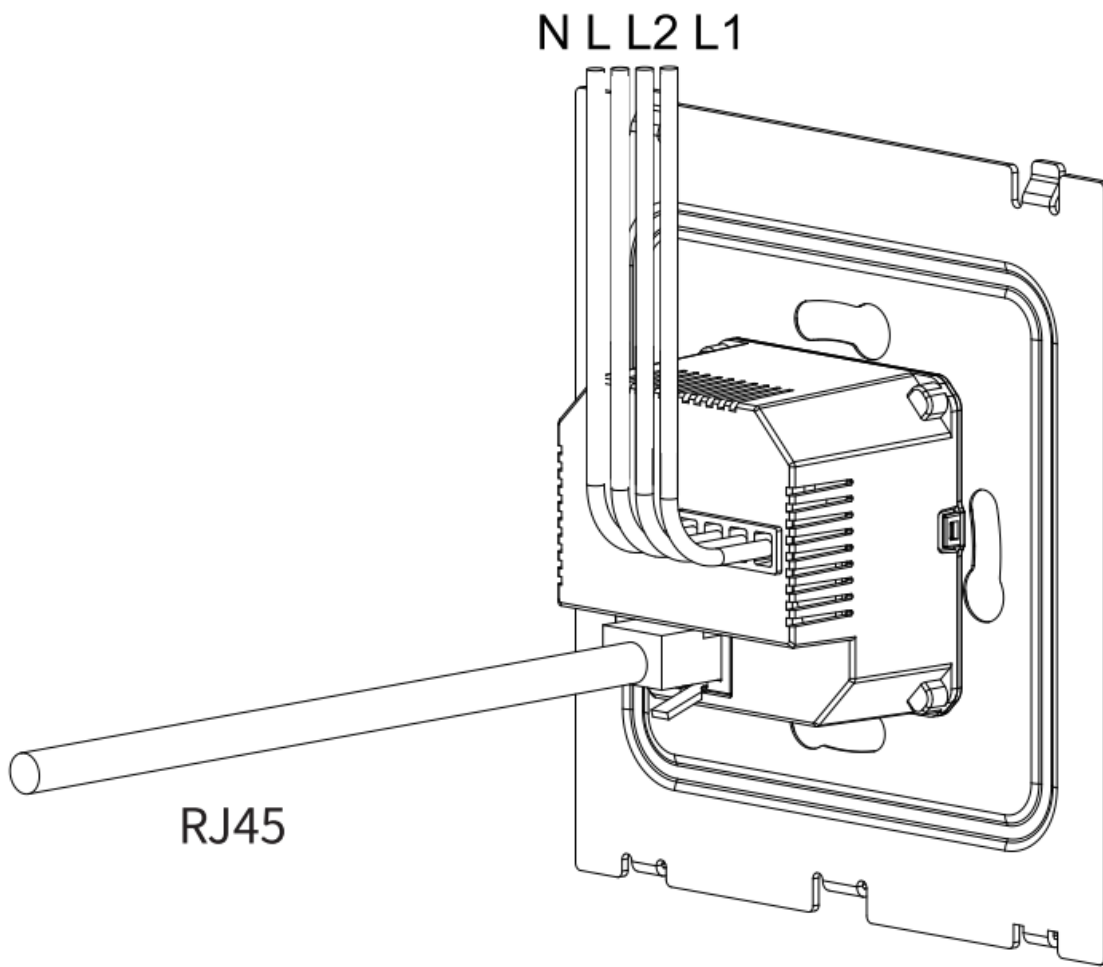
Connect all wires

Always make sure the arrow on the front of the flush mounted module is pointing up.



- Plug the wires to the corresponding ports on the back of the flush mounted module.
- Tighten the screws at the bottom clockwise with a flat-head screwdriver until wires are secure.
- Double check by gently tugging on each wire.

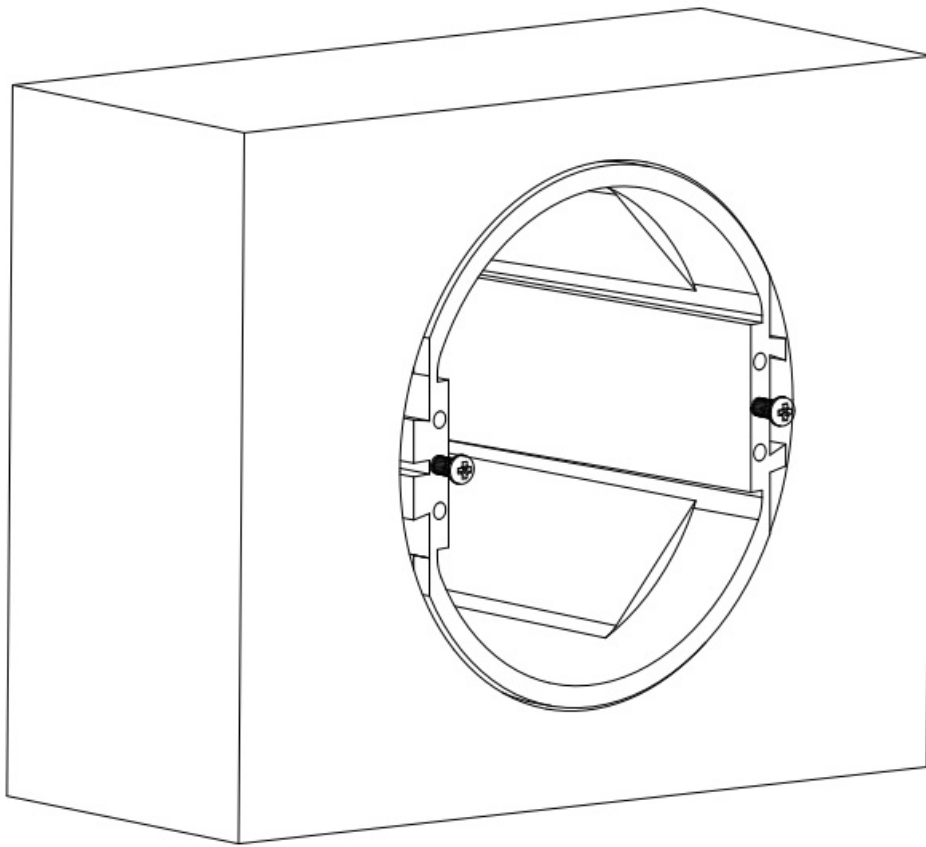
- Plug the RJ45 network cable to the Ethernet port if you need to use the wired network.



Installation

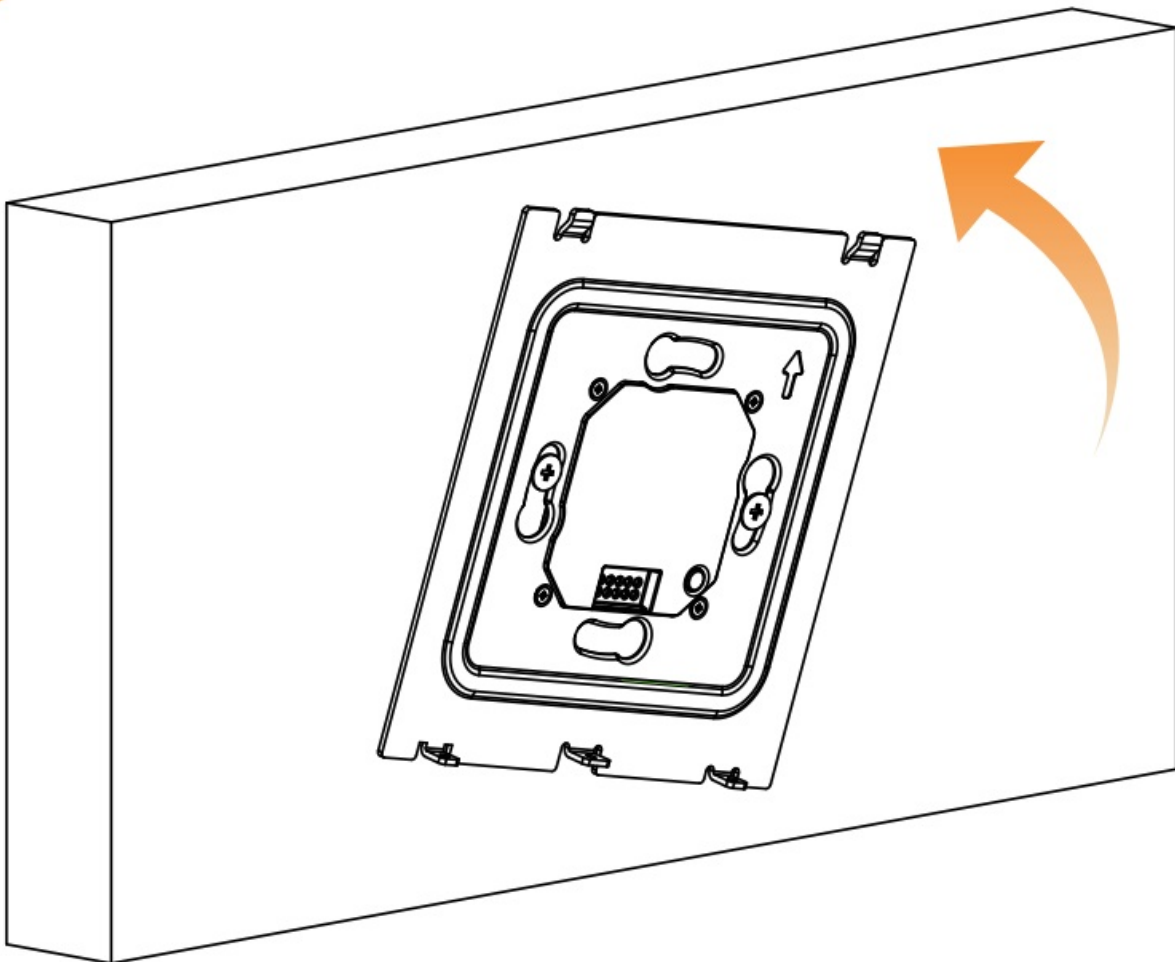
Select screws

- Select the proper screws fitting your electrical box.
- Change the torque on the electric screwdriver to Skgf.cm.
- Turn screws clockwise with the screwdriver.
- Do not fully tighten the screws. The screw head must protrude at least 3 mm (1/8 inch) from the wall surface.

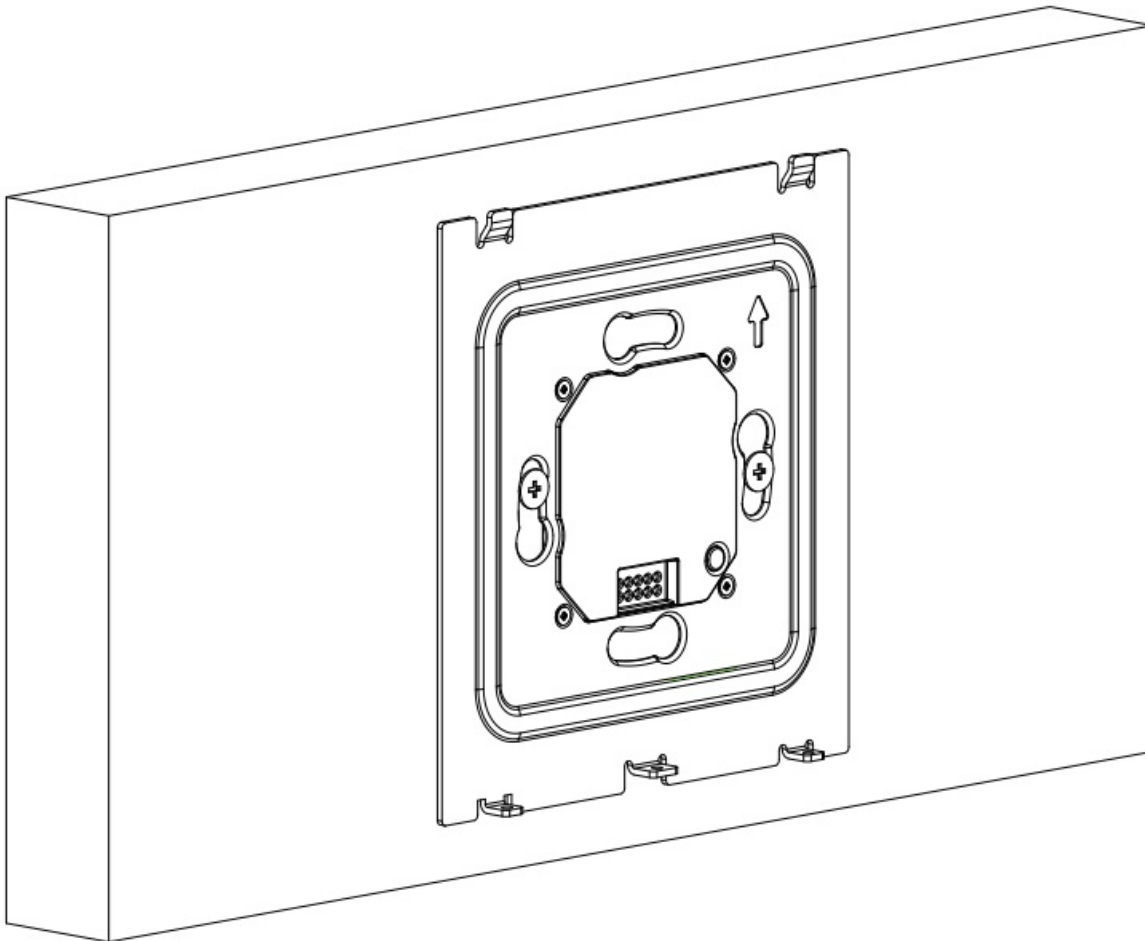


Install flush mounted module

- Attach the flush mounted module to the electrical box. The screws should go through the holes on the module.



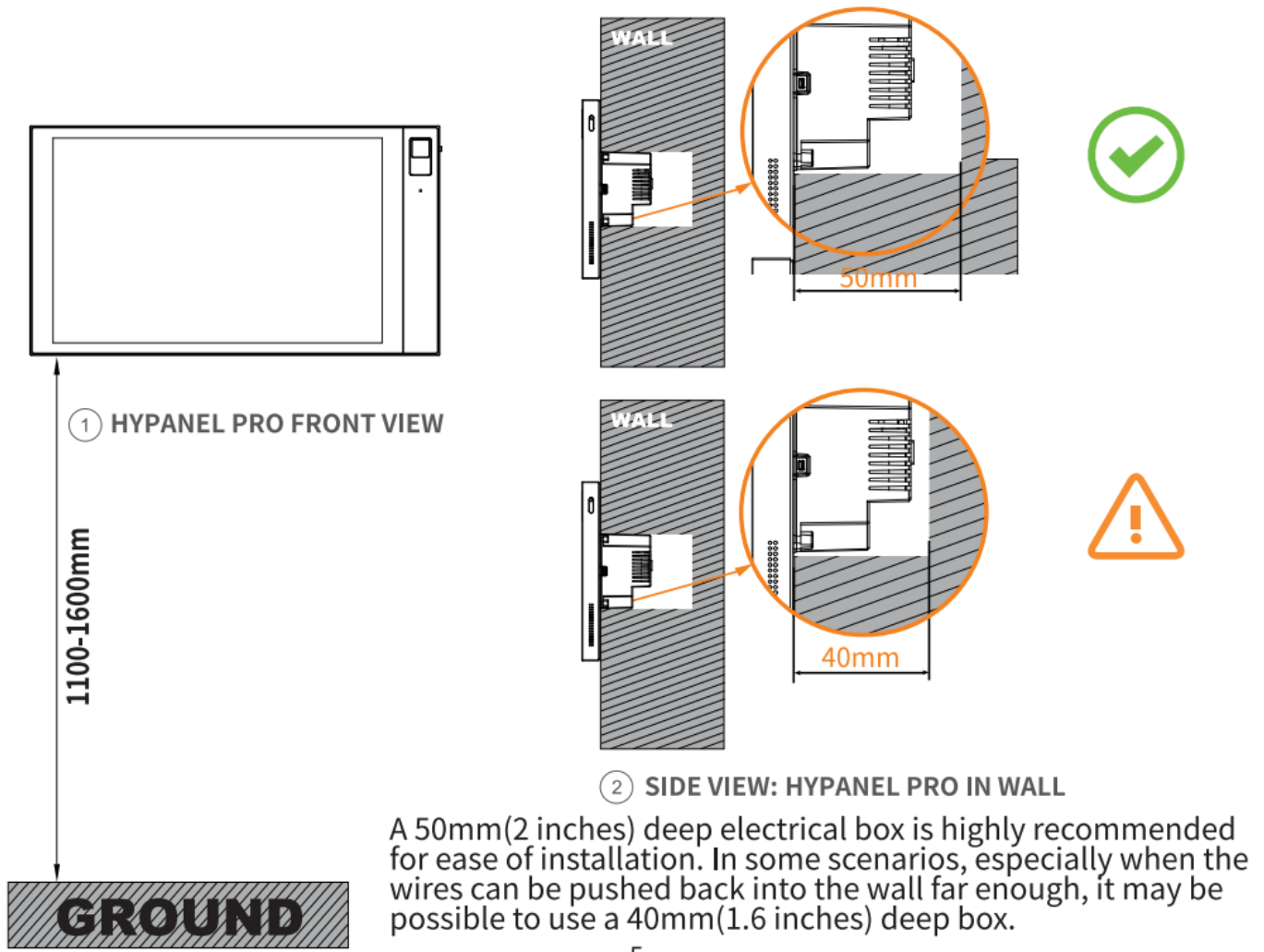
- Adjust the module to be level and ensure it is flush against the wall.



- Tighten the screws to attach the module to the wall, taking care not to over-tighten them.

Working space

Make sure HyPanel Pro is compatible with the location where you want to install it.



Maximum load

- The total load of the device(s) connected to HyPanel Pro must be less than 1200W(Max load).
- The wattage of a resistive load appliance, e.g., an incandescent bulb, must be less than 800W.
- The wattage of a LED lamp or compact fluorescent lamp(CFL) must be less than 400W.
- You must check the load compatibility before connecting other types of devices that are not mentioned above.

180V~260V AC/50 Hz power required

If you are in the 110V country or region, you have to use an isolation transformer to step up 110V voltage to 180V~260V before it can be used for HyPanel Pro.

Neutral wire required for installation

A neutral wire is required for the device to function properly.

Support Wi-Fi and Ethernet connections

HyPanel Pro can operate with both wireless and wired networks, but we highly recommend using wired networks if you want to remotely control the device via the Bela Home app or perform updates.

Wiring

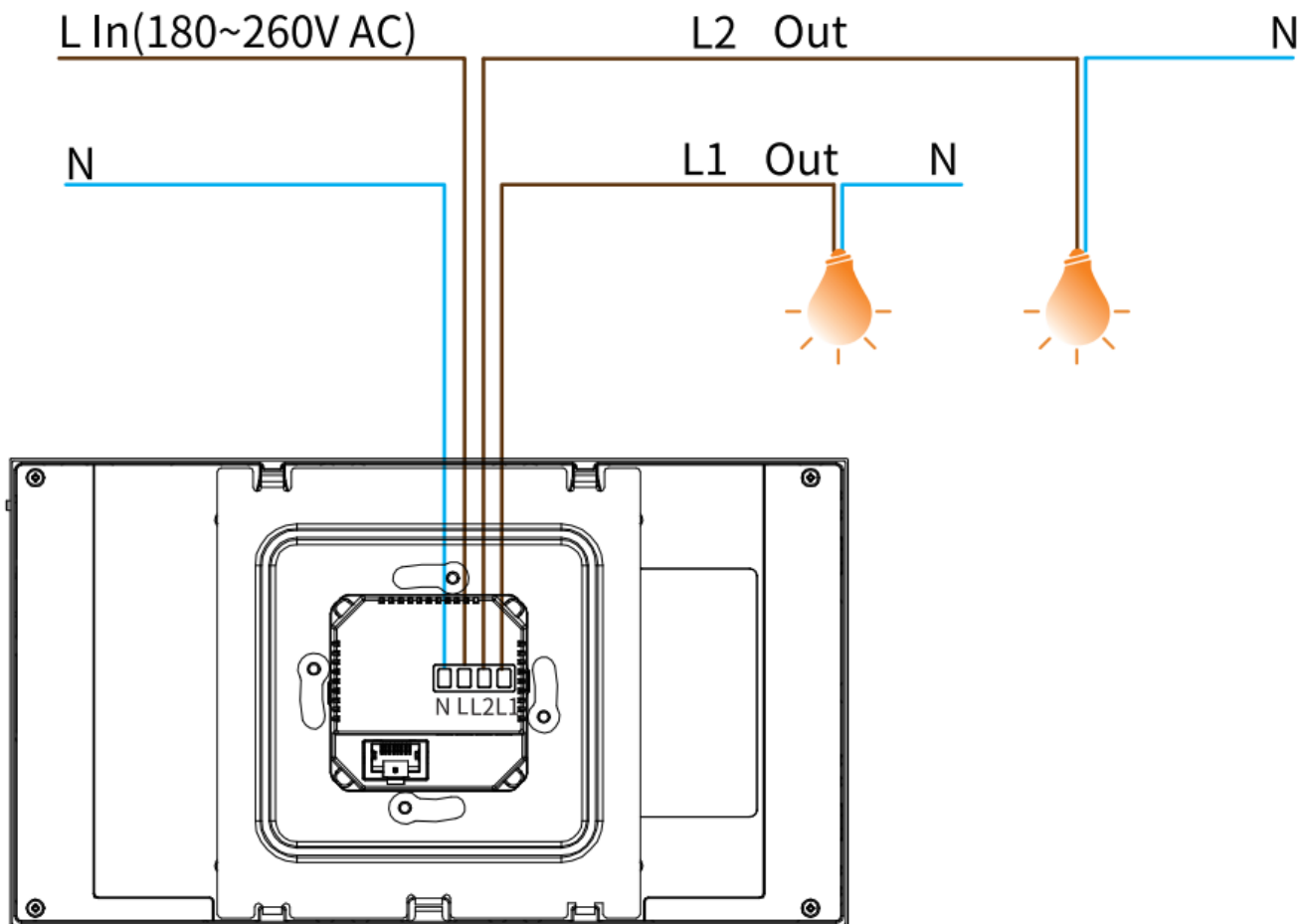
Warning!

Turn OFF the circuit breaker before wiring and proceeding!

Always use a voltage detector to verify the power is OFF before wiring and installation!

Identify wires

- A Neutral wire(N) typically comes from the wall.
- The Line wire (L) provides 180-260 Volts of power to the HyPanel Pro.
- L1 and L2 are Load wires that connect the HyPanel Pro to the light bulbs or other devices, e.g., fans or curtain motors.



Connect wires

Strip and straighten wires

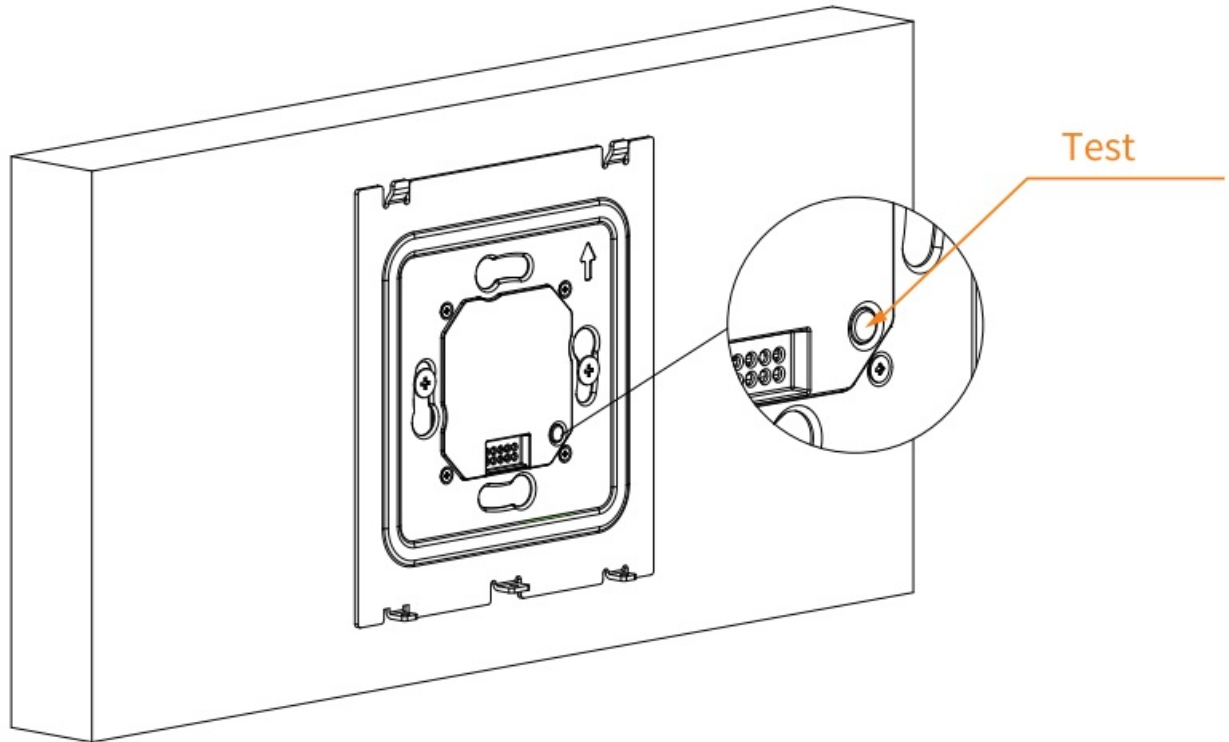
Wires connected to HyPanel Pro should be 1.5mm² ~ 2.5mm² in size and have stripped and straight ends. Remove the plastic sheathing of the wire, and make sure the exposed wire ends measure approximately 8 mm (5/16 inch) in length.



Test connected devices

- Turn on the circuit breaker to provide power to the flush mounted module.
- Press the button at the bottom right to check if the connected devices can work.
 - Press the button once, one connected device (Relay 1) will be turned on/off.
 - Double-press the button, the other device (Relay 2) will be turned on/off.
 - Long press the button, two connected devices will be turned on/off simultaneously.

If the devices do not turn on/off, do NOT install the panel. Turn the power off and re-check the wire connections.



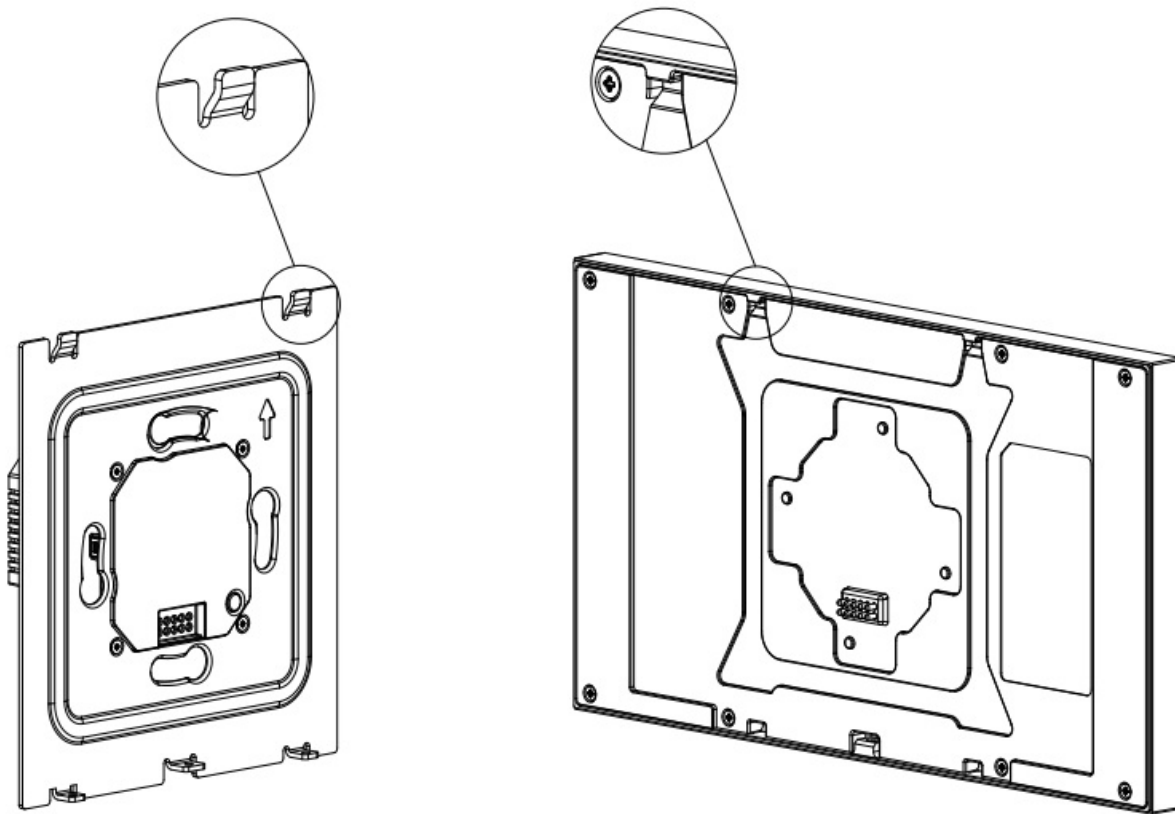
Install panel

After installing the flush mounted module, you can start securing the panel.

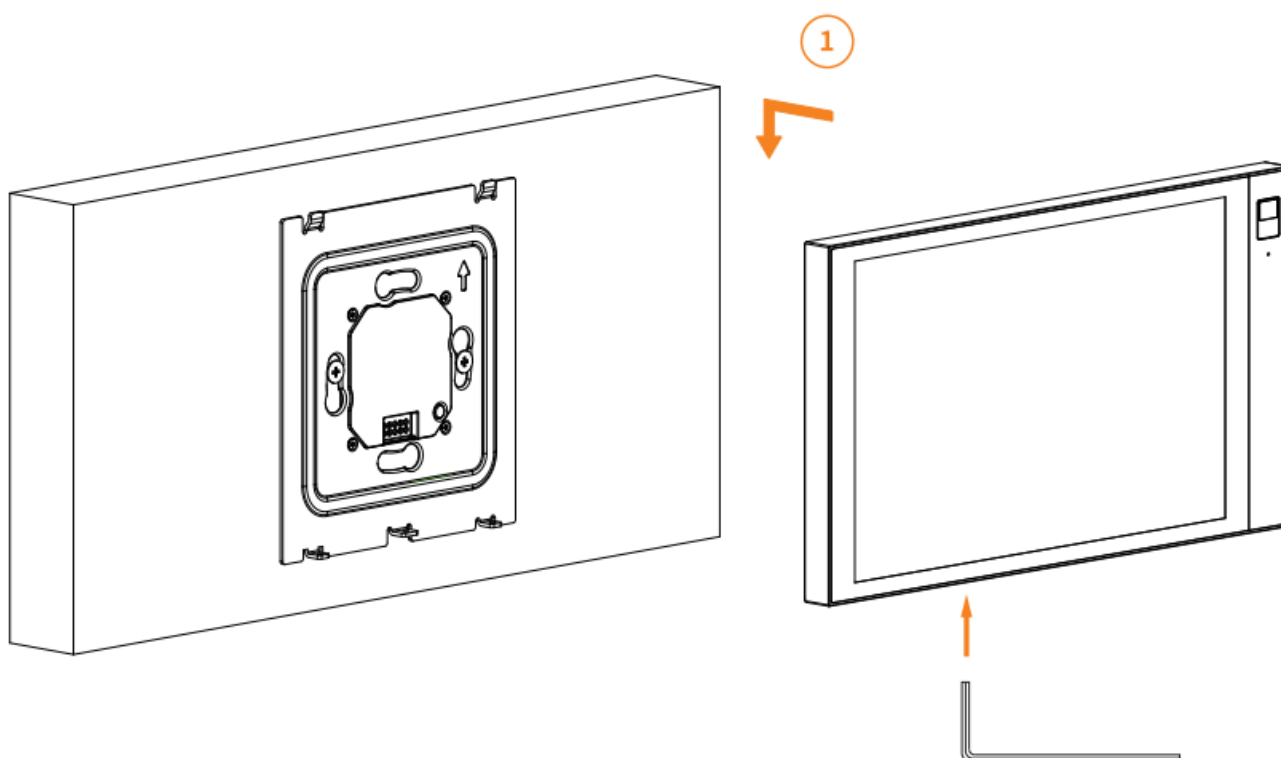


Turn OFF the circuit breaker before you install the panel.

Line up the two clips on the flush mounted module with the notches on the panel. Snap the panel into place and press it down.



- Check the panel is properly clipped onto the module and is flush against the wall.
- Locate the screw hole on the bottom of the panel. There is a screw already in it.
- Tighten the screw with the included hex key.

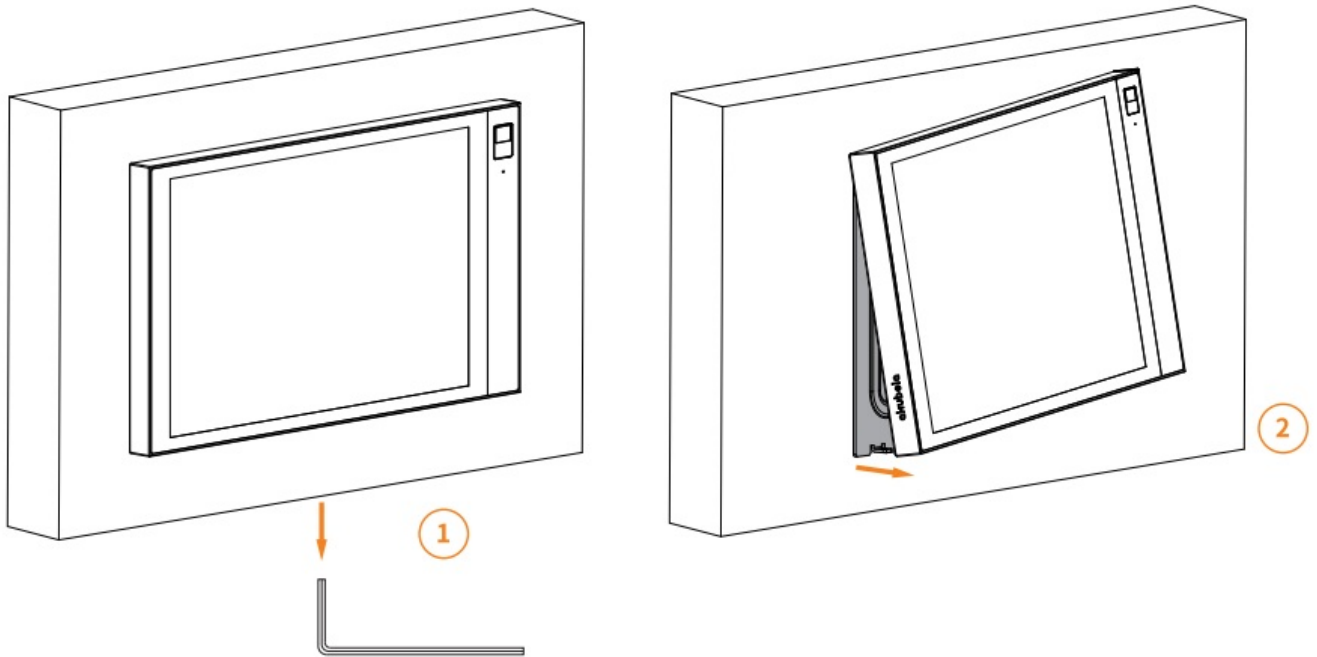


If you need to remove the panel

We strongly recommend detaching a panel from the screwing side.

1. Turn the screw with the hex key until the rear edge of the panel come loose.

2. Press one hand above the panel on the top, and then grab and pull out the panel with the other hand from the bottom edge.



Congratulations!


You are done with the HyPanel Pro installation!
Start your smart home journey with Akubela now!

Get Help

For help or more assistance,
contact us at: <https://ticket.akuvox.com/>
For videos, guides, and additional product formation,
visit us at: <https://knowledge.akuvox.com>



Documents / Resources

	akubela PG71-R2-EU HyPanel Pro Android 10 Indoor Unit [pdf] Installation Guide PG71-R2-EU HyPanel Pro Android 10 Indoor Unit, PG71-R2-EU, HyPanel Pro Android 10 Indo or Unit, Pro Android 10 Indoor Unit, Android 10 Indoor Unit, 10 Indoor Unit, Indoor Unit, Unit
---	--

References

- [User Manual](#)

[Manuals+](#), [Privacy Policy](#)

This website is an independent publication and is neither affiliated with nor endorsed by any of the trademark owners. The "Bluetooth®" word mark and logos are registered trademarks owned by Bluetooth SIG, Inc. The "Wi-Fi®" word mark and logos are registered trademarks owned by the Wi-Fi Alliance. Any use of these marks on this website does not imply any affiliation with or endorsement.