

NX-Hood 30 Series Akicon Range Hood Insert Built In



NX-Hood 30 Series Akicon Range Hood Insert Built In Installation Guide

[Home](#) » [AKICON](#) » NX-Hood 30 Series Akicon Range Hood Insert Built In Installation Guide 

Contents

- [1 NX-Hood 30 Series Akicon Range Hood Insert Built In](#)
- [2 Product Information](#)
- [3 Product Usage Instructions](#)
- [4 Frequently Asked Questions](#)
- [5 Models](#)
- [6 Safety Instructions](#)
- [7 Installation Instruction](#)
- [8 Contact Information](#)
- [9 Documents / Resources](#)
 - [9.1 References](#)



NX-Hood 30 Series Akicon Range Hood Insert Built In



Product Information

Specifications

- **Model No.:** NX-Hood 30/36
- **MFG Part #:** 5011098
- **Ventilation Methods:** Top ventilation and rear wall ventilation
- Not compatible with side cabinet ventilation
- **Pre-drilled hole:** 8-inch at the rear of the product

Product Usage Instructions

Before Installation

- Before installation, read the safety instructions carefully.
- Conduct an electrical test to ensure proper functionality.

Installation Steps

Step 1: Remove the Insert Vent from the Hood

1. Loosen screws on the panel according to the model (2 screws for 30, 6 screws for 36).
2. Remove the button by loosening B screws and A plug.
3. Loosen 6 screws on the housing.

Step 2: Install the Hood on the Wall

1. Level and use the template to fix holes (recommended range: 28-36 inches).
2. Install the power socket in the reserved hole.
3. Install the hood on the wall and connect the ventilation duct.

Step 3: Install the Insert Vent on the Hood

1. Secure 6 screws on the housing.

2. Reinstall the button by securing B screws and A plug.
3. Secure screws on the panel (2 for 30, 6 for 36).

Frequently Asked Questions

- **Q: What are the compatible ventilation methods for this product?**

A: The product is compatible with top ventilation and rear wall ventilation methods only. Side cabinet ventilation is not supported.

- **Q: How can I contact customer service for assistance during installation?**

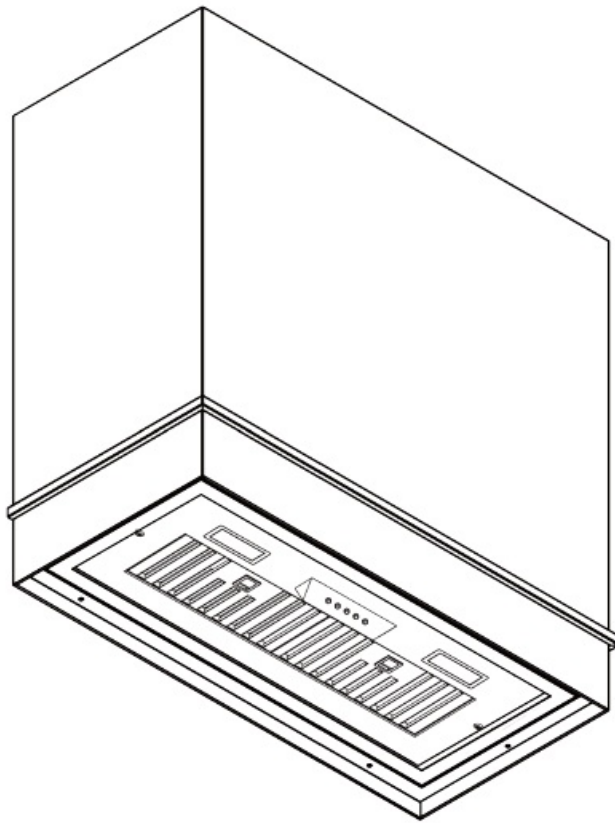
A: You can contact our after-sales service via email at service@akiconshop.com. We also provide installation videos for reference.

- **Q: What should I do if I encounter any issues during installation?**

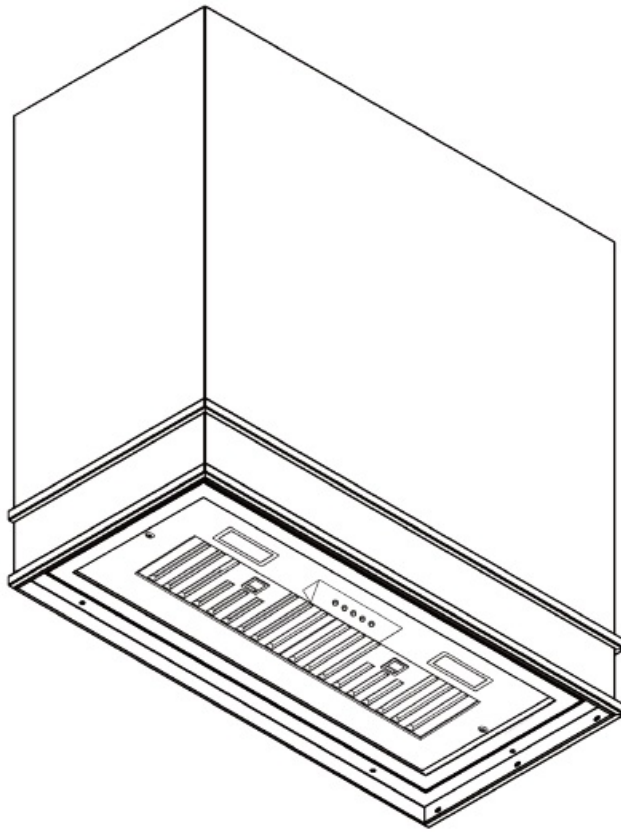
A: If you face any problems during installation, please contact our customer service for assistance. We are here to help resolve any issues.

Models

- AK-HS30HA-SWC
- AK-HS30HA-SWG
- AK-HS30HA-SWN
- AK-HS30HA-BSC
- AK-HS30HA-BSG
- AK-HS30HA-JBC
- AK-HS30HA-JBG
- AK-HS30HA-JBN
- AK-HS36HA-SWC
- AK-HS36HA-SWG
- AK-HS36HA-SWN
- AK-HS36HA-BSC
- AK-HS36HA-BSG
- AK-HS36HA-JBC
- AK-HS36HA-JBG
- AK-HS36HA-JBN

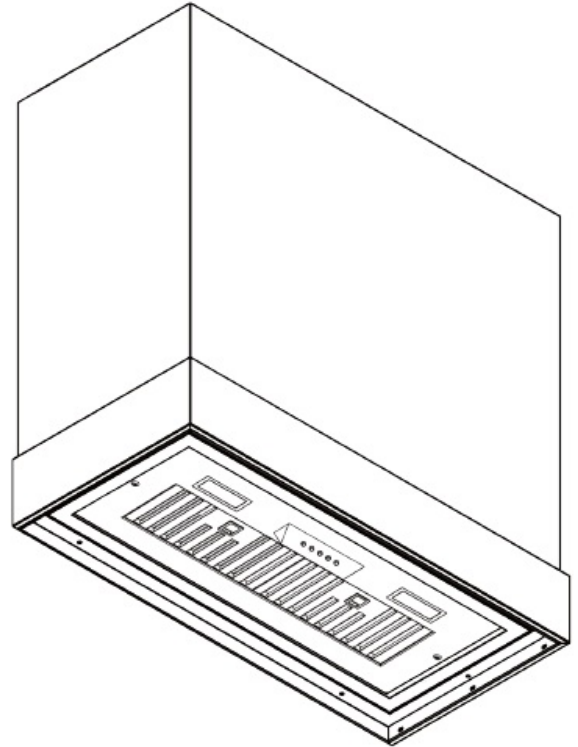
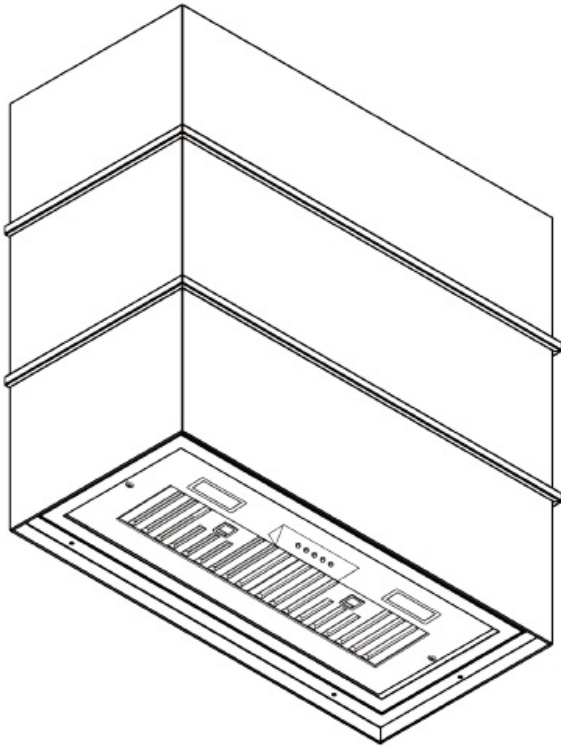


- AK-HS30HB-SWC
- AK-HS30HB-SWG
- AK-HS30HB-SWN
- AK-HS30HB-BSC
- AK-HS30HB-BSG
- AK-HS30HB-JBC
- AK-HS30HB-JBG
- AK-HS30HB-JBN
- AK-HS36HB-SWC
- AK-HS36HB-SWG
- AK-HS36HB-SWN
- AK-HS36HB-BSC
- AK-HS36HB-BSG
- AK-HS36HB-JBC
- AK-HS36HB-JBG
- AK-HS36HB-JBN



- AK-HS30HC-SWC
- AK-HS30HC-SWG
- AK-HS30HC-SWN
- AK-HS30HC-BSC
- AK-HS30HC-BSG
- AK-HS30HC-JBC
- AK-HS30HC-JBG
- AK-HS30HC-JBN
- AK-HS36HC-SWC
- AK-HS36HC-SWG
- AK-HS36HC-SWN
- AK-HS36HC-BSC
- AK-HS36HC-BSG
- AK-HS36HC-JBC
- AK-HS36HC-JBG
- AK-HS36HC-JBN
- AK-HS30HD-SWC
- AK-HS30HD-SWG
- AK-HS30HD-SWN
- AK-HS30HD-BSC
- AK-HS30HD-BSG
- AK-HS30HD-JBC
- AK-HS30HD-JBG
- AK-HS30HD-JBN
- AK-HS36HD-SWC

- AK-HS36HD-SWG
- AK-HS36HD-SWN
- AK-HS36HD-BSC
- AK-HS36HD-BSG
- AK-HS36HD-JBC
- AK-HS36HD-JBG
- AK-HS36HD-JBN



Safety Instructions

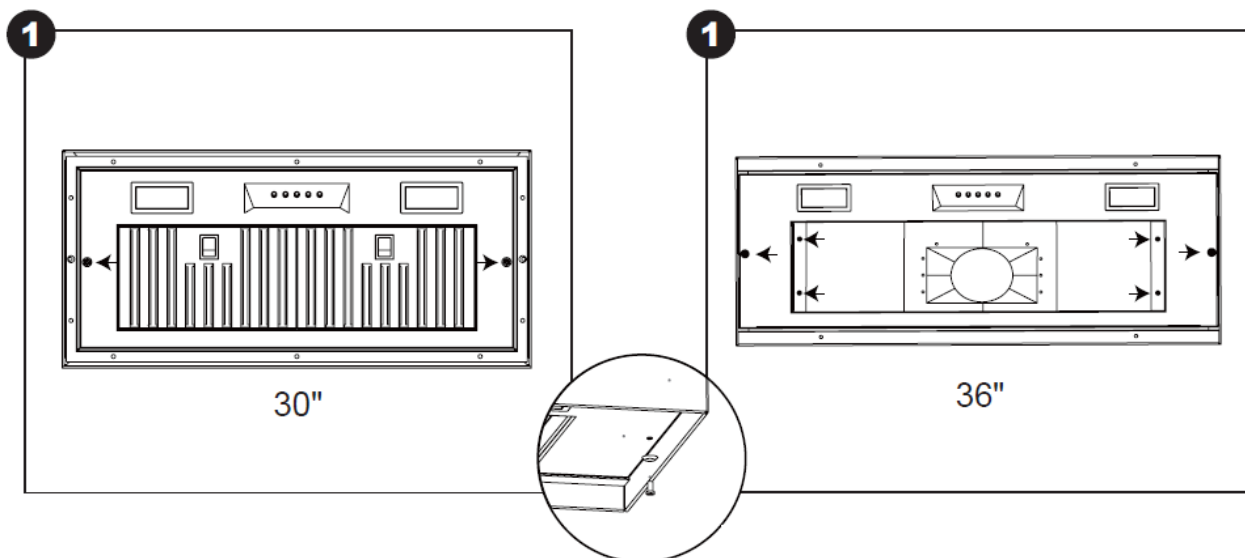
This product is designed for two specific ventilation methods: top ventilation and rear wall ventilation. It is not compatible with side cabinet ventilation. I would recommend conducting an electrical test before installation to ensure that the product functions properly. If you encounter any issues during the installation process, please don't hesitate to contact us at our after-sales service email address: service@akiconshop.com.

We will provide you with installation videos for reference. There is an 8-inch pre-drilled hole at the rear of the product. Please ensure that the power panel is positioned to align with this hole. When arranging the placement of the ventilation duct and the power panel, be sure to do so thoughtfully to avoid any conflicts or obstructions.

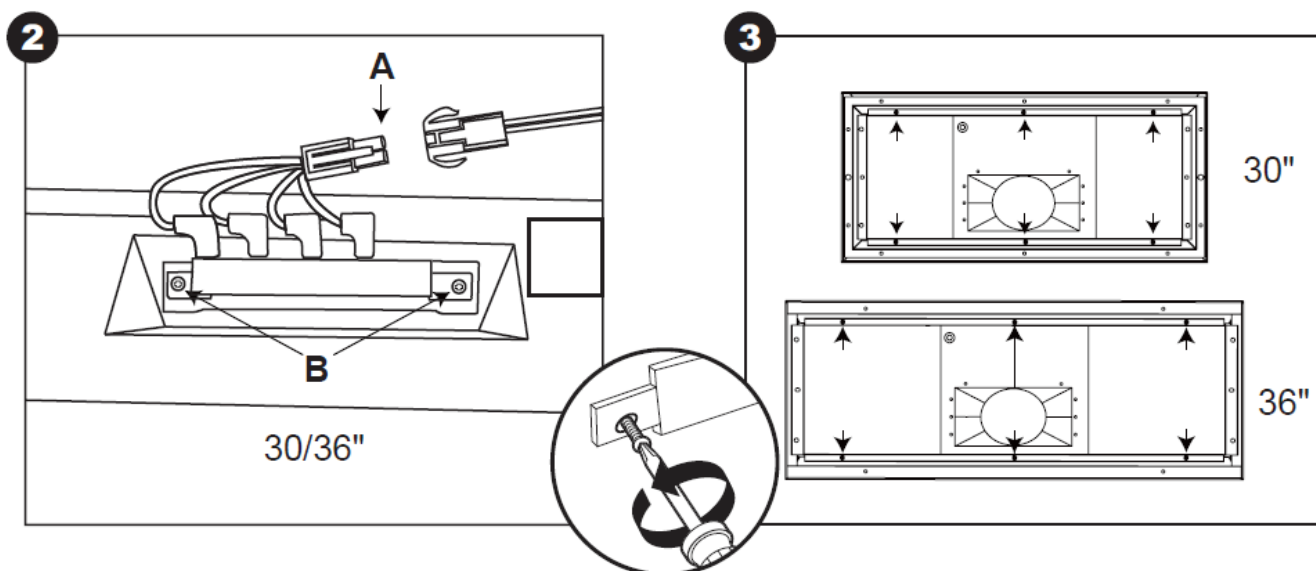
Installation Instruction

Step 1: Remove the insert vent from the hood.

1. **A.** Loosen 2 pcs screws on the panel.
1. **B.** Loosen 6 pcs screws on the panel.

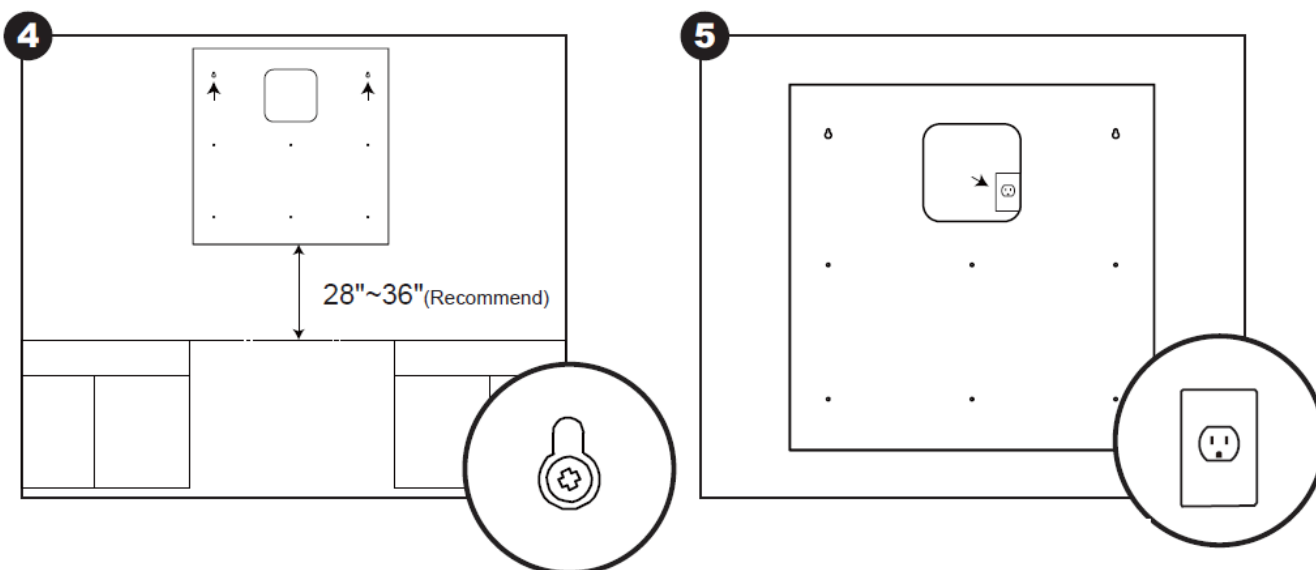


2. Loosen B screws and A plug to remove the button.
3. Loosen 6 pcs screws on the housing.

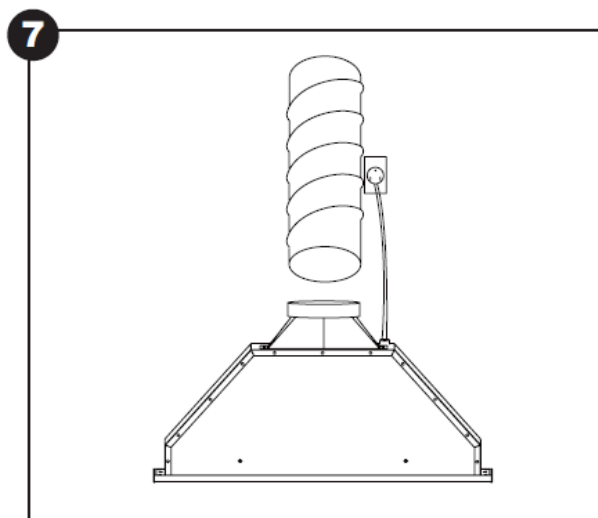
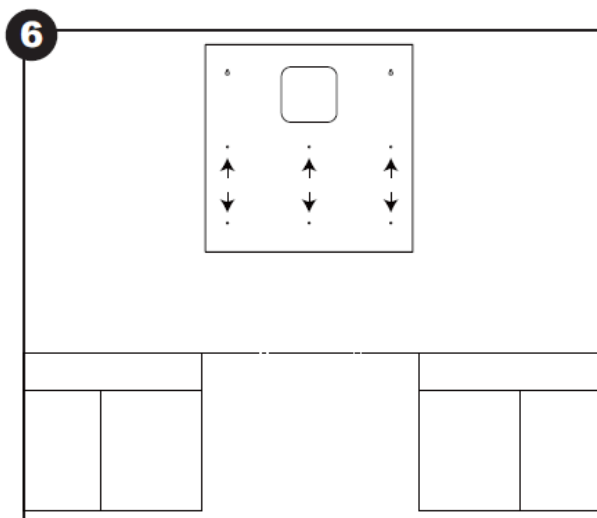


Step 2: Install the hood on the wall.

4. Level and use the template to fix the holes.
5. Install the power socket in the reserved hole

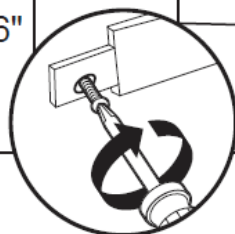
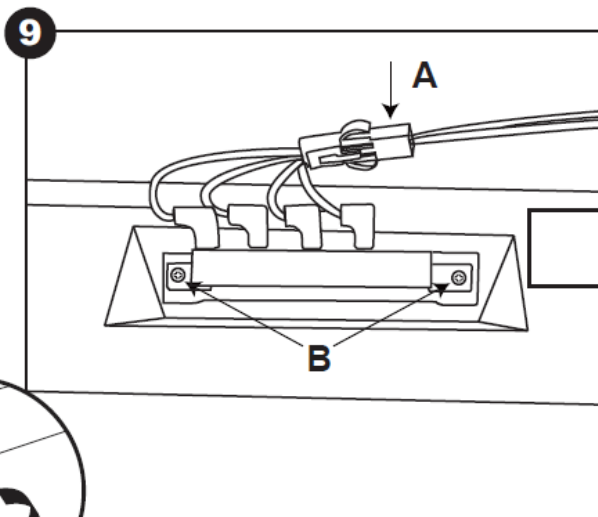
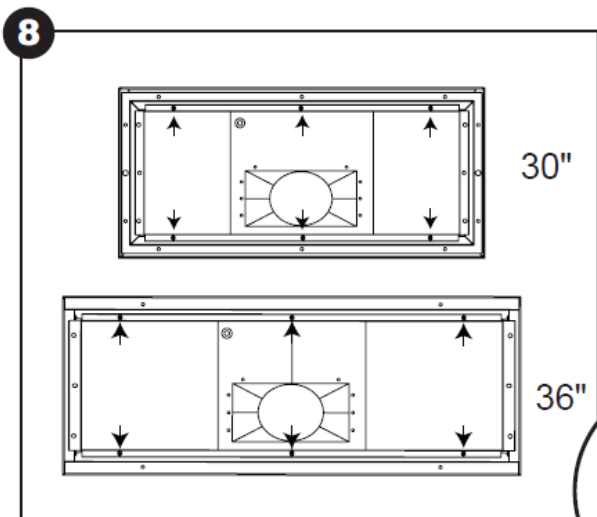


6. Install the hood on the wall.
7. Install ventilation duct and plugin.

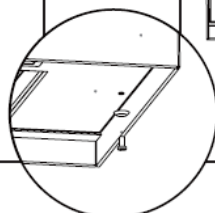
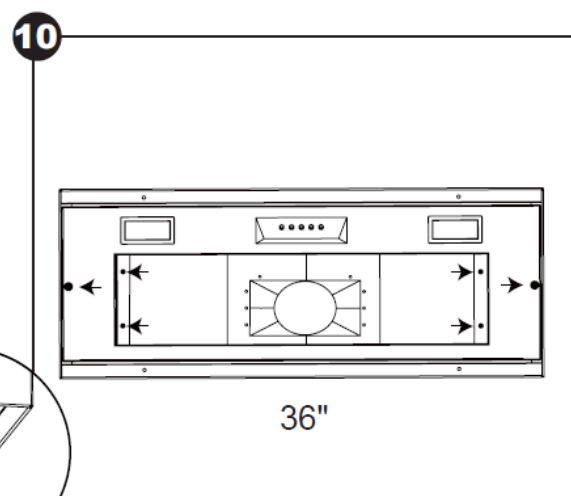
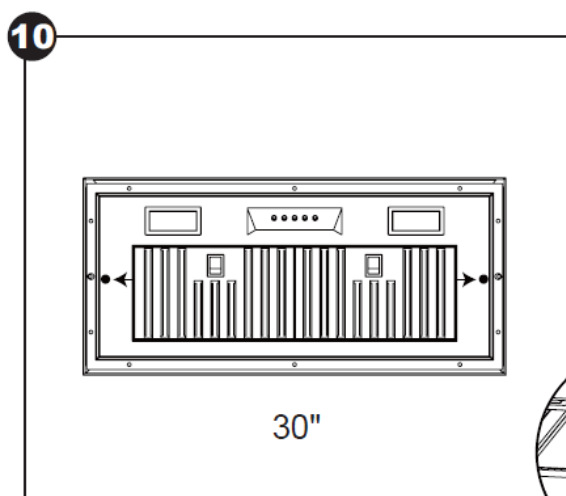


Step 3: Install the insert vent on the hood.

8. Secure 6 pcs screws on the housing.
9. Secure B screws and A plug to reinstall the button.



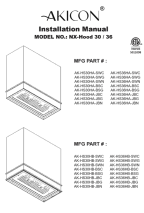
10. A. Secure 2 pcs screws on the panel.
1. B. Secure 6 pcs screws on the panel.



AKICON INC.

- **Tel:** 1-(626)-363-4414
- **Toll-Free Number:** 1-(888)-828-2025
- **Email:** service@akiconshop.com
- **Website:** www.akiconshop.com/www.akicon.com.
- **Address:** 18555 Gale Ave, City of Industry, CA 91748

Documents / Resources

	<p>AKICON NX-Hood 30 Series Akicon Range Hood Insert Built In [pdf] Installation Guide NX-Hood 30 Series Akicon Range Hood Insert Built In, NX-Hood 30 Series, Akicon Range Hood Insert Built In, Hood Insert Built In, Insert Built In, Built In, In</p>
---	---

References

- [AKICON Copper Kitchen & Bath-stainless & copper customized range hood](#)
- [Akicon Copper Kitchen & Bath](#)
- [User Manual](#)

Manuals+, Privacy Policy

This website is an independent publication and is neither affiliated with nor endorsed by any of the trademark owners. The "Bluetooth®" word mark and logos are registered trademarks owned by Bluetooth SIG, Inc. The "Wi-Fi®" word mark and logos are registered trademarks owned by the Wi-Fi Alliance. Any use of these marks on this website does not imply any affiliation with or endorsement.