



AKICON 41518 Two-Handle Basin Faucet Instruction Manual

[Home](#) » [AKICON](#) » AKICON 41518 Two-Handle Basin Faucet Instruction Manual 

Contents

- [1 AKICON 41518 Two-Handle Basin Faucet](#)
- [2 PACKING LIST](#)
- [3 YOU MAY NEED](#)
- [4 INSTALLATION PROCEDURES](#)
- [5 MAINTENANCE AND CARE](#)
- [6 CAUTION: Maintenance](#)
- [7 TROUBLESHOOTING](#)
- [8 Documents / Resources](#)
 - [8.1 References](#)



AKICON 41518 Two-Handle Basin Faucet



Product Information

Model: 41518

Product: Two-Handle Basin Faucet

Packing List:

- A- Spout Assembly
- B- Handle Assembly (2)
- C- Pop-up assembly (Optional)
- D- Rubber Washer (3) E- Metal Washer (3)
- F – Mounting Nut (3)

Optional Accessories: Not specified

Product Usage Instructions

Handle Removal

1. Turn off water and relieve pressure.
2. Detach handle button using a small flathead screwdriver.
3. Unscrew set screw using an Allen Wrench.
4. Take off handle.

Valve Removal

1. Turn off water and relieve pressure.
2. Remove handles.
3. Unscrew Dome Cap counterclockwise by hand.
4. Unscrew Retaining Nut using an adjustable wrench.
5. Take out cartridge assembly and inspect.
6. Replace parts as necessary.
7. Reassemble parts by reversing steps.

CAUTION: Maintenance

1. Replacement parts may be available at the store where you purchased your faucet.
2. Always turn off water and relieve pressure before working on your faucet.

NOTES: Cleaning Instructions

1. To keep the faucet clean, you should clean the faucet frequently and regularly.
2. Clean the faucet with clear water or mild liquid, rinse the faucet with clear water, and then dry the faucet with soft cotton cloths.
3. Do not use any abrasive cleansers, cloths, or paper towel.
4. Do not use any acid or abrasive detergent.

TROUBLESHOOTING

If you've followed the instructions carefully and your faucet still does not work properly, take these corrective steps:

Problem: Leaks underneath handle. Aerator leaks or has an inconsistent water flow pattern. Water will not shut off completely.

Cause: Cartridge has come loose. Aerator is dirty or worn out or misfitted. Dirty or worn out washer in cartridge.

Action:

- Tighten the cartridge.
- Unscrew the aerator to clean or replace the washer, or replace the aerator.
- Remove handle and cartridge to check if the washer is permanently damaged or dirty. Re-install cartridge.

Installation Procedures

1. Turn off water supply.
2. Install Faucet:
 1. Clean all the dirt from valve outlets. If replacing an existing faucet, remove it from the sink and clean the sink surface thoroughly.
 2. Place O-Ring to the bottom of the spout body.
 3. Insert Spout Shank through the center hole of the sink.
 4. From underneath the sink, place Plastic Washer and Metal Washer onto the spout shank and tighten with Mounting Nut by hand. Before final tightening, ensure Pop-up Hole is facing back.
3. Water Supply Line Connections:
 1. Connect Spout hot water flexible hoses to the Left Valve Side Connector. Tighten flexible hoses Nut.
 2. Connect Spout cold water supply line to the right Valve Side Connector.
4. Pop-up Assembly Installation:
 1. Connect hot and cold water flexible hoses to faucet inlets.

IMPORTANT NOTICES:

For easy installation, please read all the instructions completely before beginning. Before installing this product, make sure that water line trash is cleared to avoid blockage.

YOU MAY NEED

If you have any questions, problems, or missing parts, please contact Akicon Customer Service:

Phone: +1302213 4406

Email: service@akiconshop.com

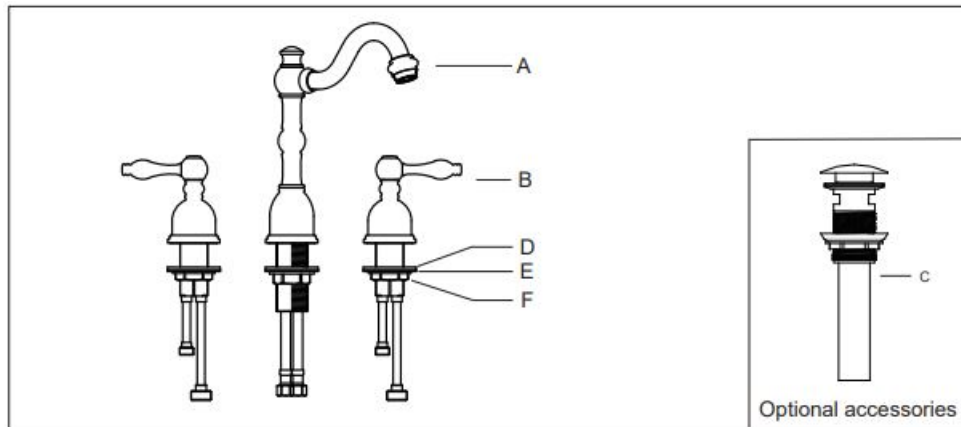
Website: www.akiconshop.com

EX: E001004T Rev:A

PACKING LIST

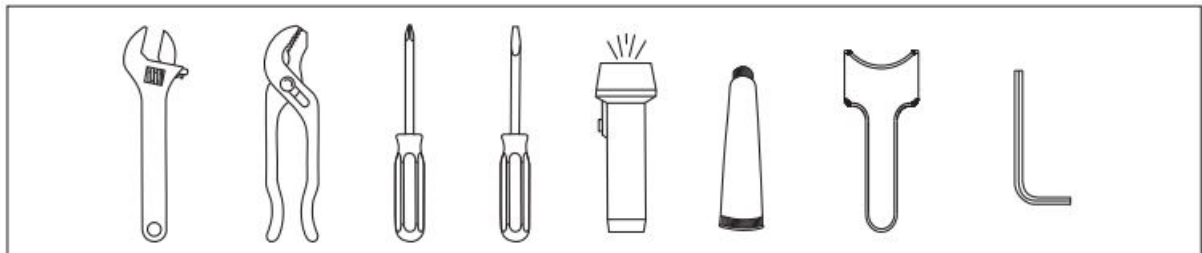
After you open this package, please check to ensure that all of the following items are included.

- A- Spout Assembly
- B- Handle Assembly (2)
- C- Pop-up assembly(Optional)
- D- Rubber Washer (3)
- E- Metal Washer (3)
- F – Mounting Nut(3)



IMPORTANT NOTICES: For easy installation, please read all the instruction completely before beginning. Before installing this product, make sure that water line trash is cleared to avoid blockage.

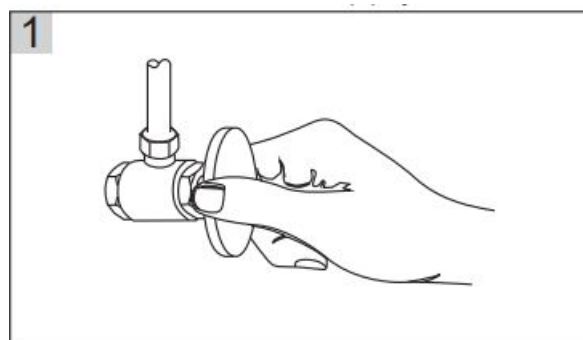
YOU MAY NEED



INSTALLATION PROCEDURES

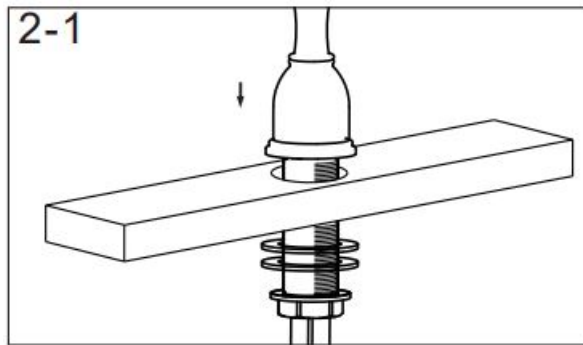
1. Turn Off Water Supply

You should clean all the dirt from valve outlets. Turning off the water supply valves. This is usually found near the water meter. If you are replacing an existing faucet, remove the faucet from the sink and clean the sink surface thoroughly.

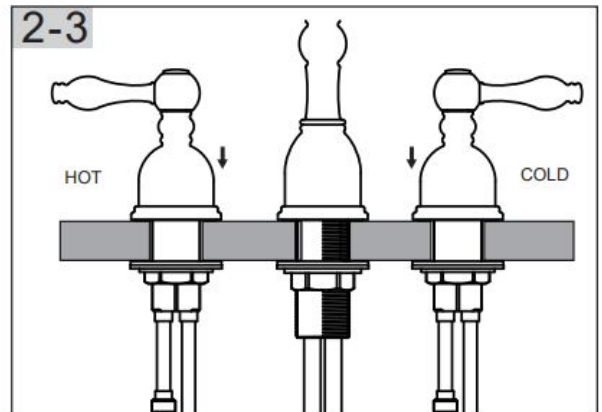
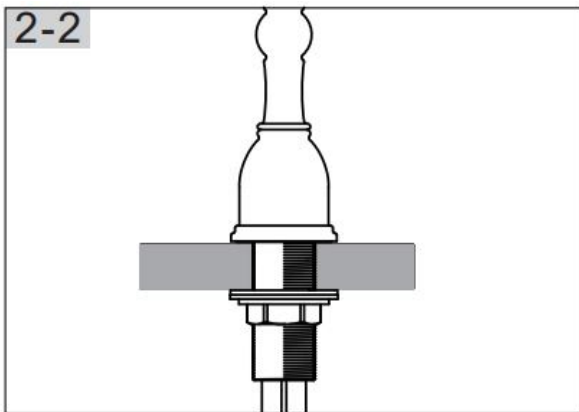


2. Install Faucet

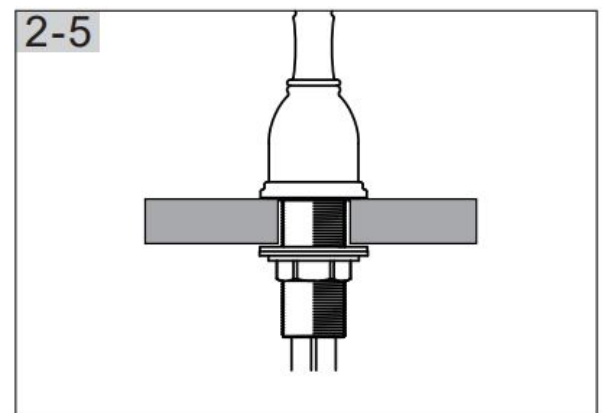
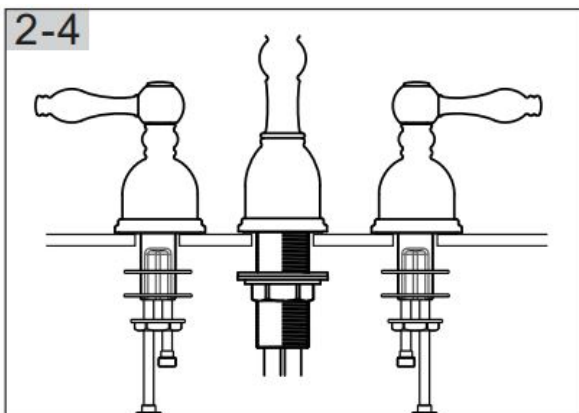
1. Be sure that O-Ring is placed to the bottom of the spout body. Insert Spout Shank through the center hole of sink. From underneath sink, place Plastic Washer and Metal Washer onto spout shank and tighten with Mounting Nut by hand. Before final tightening, be sure Pop-up Holefacing back.



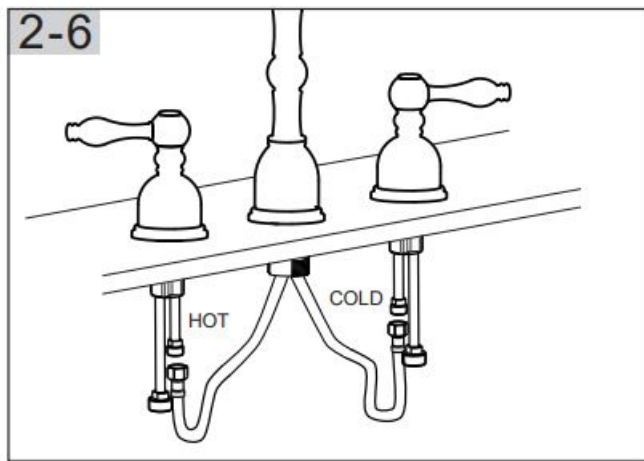
2. If necessary, tighten screws using a crosshead screwdriver until the faucet is firmly connected to the sink.
3. Place Mounting Nut, Metal Washer and Rubber Washer over Valve Shank. From the underside sink, insert valve body through mounting holes. The hot valve, labeled with red tag should be positioned to the left side of the spout.



4. From underneath sink, tighten Mounting Nut by Tool . Before final tightening, make sure Valve Body Side Connector facing Spout Body.
5. From underneath sink, tighten Mounting Nut by Hand. Before final tightening, make sure Valve Body Side Connector facing Spout Body.

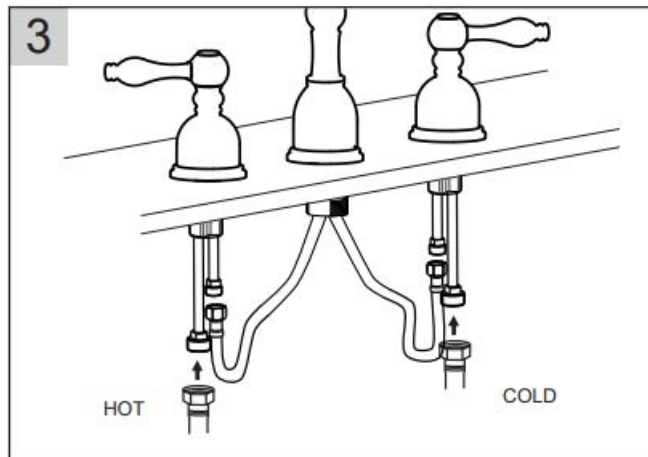


6. Connect Spout hot water flexible hoses to the Left Valve Side Connector. Tighten flexible hoses Nut. Connect Spout cold water supply line to the right Valve Side Connector.



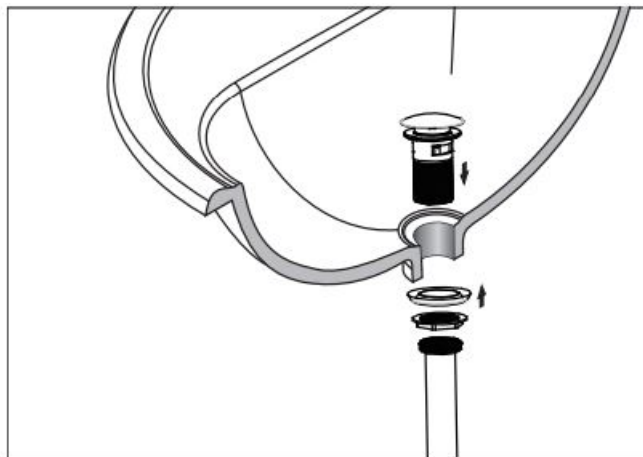
3. Water Supply Line Connections

Connect hot and cold water flexible hoses to faucets inlets.



4. POP-UP Assembly Installation

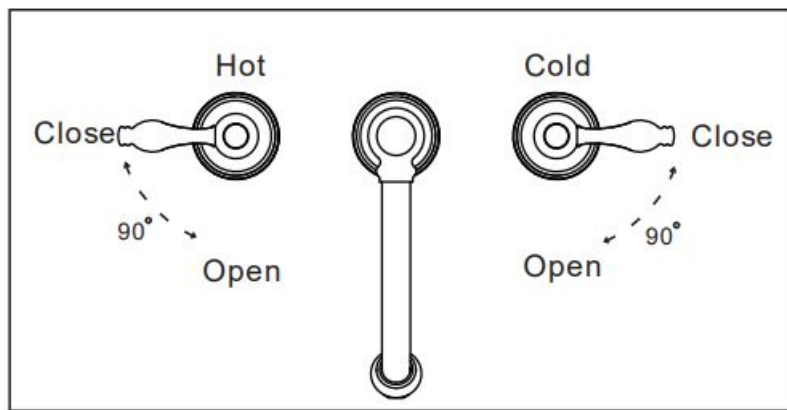
As shown. Insert Flange with Washer through Sink drain Hole. From underside, thread Drain Body into Flange. Holding the drain body in position with Ball Rod Opening facing back, tighten Metal Locknut securely. Thread Drain Tailpiece into Drain body.



MAINTENANCE AND CARE

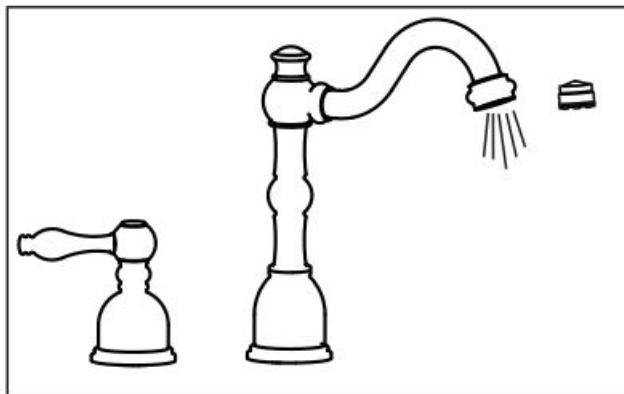
5. Valve Function

By rotating the handle closed to the spout, the Valve will be activated allowing water to flow. The water flow will increase by continuing to rotate handle. By rotating the right handle to the left, the water temperature will decrease to cold flow only. By rotating handle left to the right, the water temperature will increase to hot only.



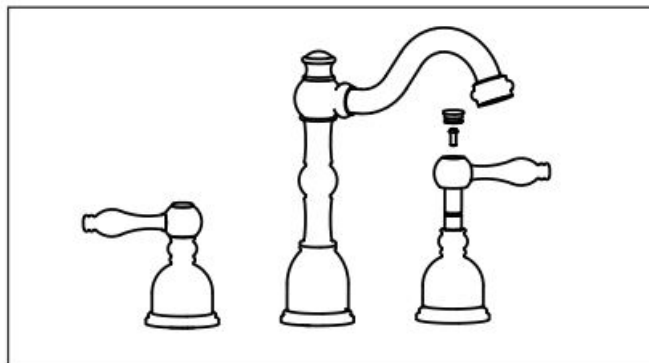
6. Faucet Start Up

After installation is complete, remove aerator and rotate handle to the close position. Turn on the Water Supply Valves, and check all connections for leak. Turn on your faucet and allow both hot and cold water to run at least one minute each. Replace Aerator.



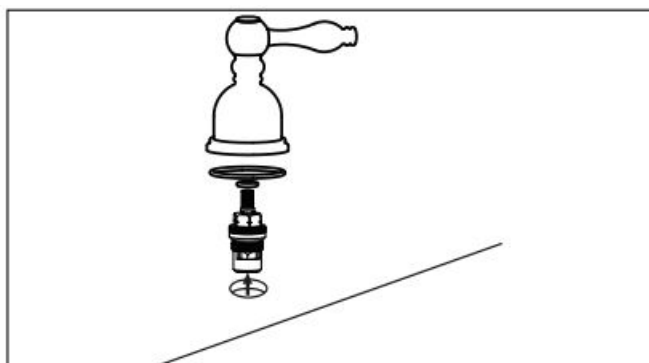
7. Handle Removal

Turn off water and relieve pressure! Detach handle button using a small flathead screwdriver, unscrew set screw using Allen Wrench and take off handle.



8. Valve Removal

Remove handles. Unscrew Dome Cap counter clockwise by hand. Unscrew Retaining Nut using adjustable wrench, take out cartridge assembly and inspect. Replace parts as necessary. Reassemble parts by reversing steps.



CAUTION: Maintenance

1. Replacement parts may be available at the store where you purchased your faucet.
2. Always turn off water and relieve pressure before working on your faucet.

NOTES: Cleaning Instructions

1. To keep the faucet clean, you should clean the faucet frequently and regularly.
2. Clean the faucet with clear water or mild liquid, rinse the faucet with clear water and then dry the faucet with soft cotton cloths.
3. Do not use any abrasive cleansers, cloths, or paper towel.
4. Do not use any acid or abrasive detergent.

TROUBLESHOOTING

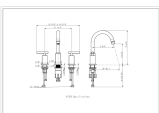
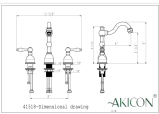
If you've followed the instruction carefully and your faucet still does not work properly, take these corrective steps.

Problem	Cause	Action
Leaks underneath handle.	Cartridge has come loose.	Tighten the cartridge.
Aerator leaks or has an inconsistent water flow pattern.	Aerator is dirty or worn out or misfitted.	Unscrew the aerator to clean or replace washer, or replace the aerator.
Water will not shut off completely.	Dirty or worn out washer in cartridge.	Remove handle and cartridge to check if the washer is damaged permanently or dirty. Re-install cartridge.

Questions, problems, missing parts?

call Akicon Customer Service 8 a.m.-6p.m. EST, Monday-Friday Phone: +1(302)213 4406, Email: service@akiconshop.com AKICONSHOP.COM

Documents / Resources

	AKICON 41518 Two-Handle Basin Faucet [pdf] Instruction Manual 41518 Two-Handle Basin Faucet, 41518, Two-Handle Basin Faucet, Basin Faucet, Faucet
	AKICON 41518 Two-Handle Basin Faucet [pdf] Instruction Manual 41518 Two-Handle Basin Faucet, 41518, Two-Handle Basin Faucet, Basin Faucet, Faucet

References

- [↶ Akicon Copper Kitchen & Bath](#)

Manuals+.