



## AKG WMS 40 mini 2 Mini Dual Vocal Set Wireless Microphone System User Guide

[Home](#) » [AKG](#) » AKG WMS 40 mini 2 Mini Dual Vocal Set Wireless Microphone System User Guide 

### Contents

- [1 AKG WMS 40 mini 2 Mini Dual Vocal Set Wireless Microphone System](#)
- [2 Specifications](#)
- [3 Product Usage Instructions](#)
- [4 Controls](#)
- [5 Quick Start Guide](#)
- [6 Setting Up](#)
- [7 Operation](#)
- [8 FCC](#)
- [9 FAQ](#)
- [10 Documents / Resources](#)
  - [10.1 References](#)



**AKG WMS 40 mini 2 Mini Dual Vocal Set Wireless Microphone System**



## Specifications

- Model: WMS 40 mini 2
- Frequency Range: 864.375 – 864.850 MHz
- Transmission Power: Low
- Output Power: High mW
- Compliance: R&TTed countries

## Product Usage Instructions

### Controls

The WMS 40 mini dual system consists of three main components: SR40, HT40, and PT40. Each component has specific controls for operation.

#### SR40 Controls:

- 1. Control 1 description
- 2. Control 2 description
- 3. Control 3 description – The AF CLIP indicator lights up if the audio level is too high.

#### Setup:

Before using the WMS 40 mini 2 system, ensure that all components are properly connected and powered on. Follow the usermanual for detailed setup instructions.

#### Frequency Selection:

Choose the appropriate frequency within the specified range (864.375 – 864.850 MHz) to avoid interference and ensure optimal performance.

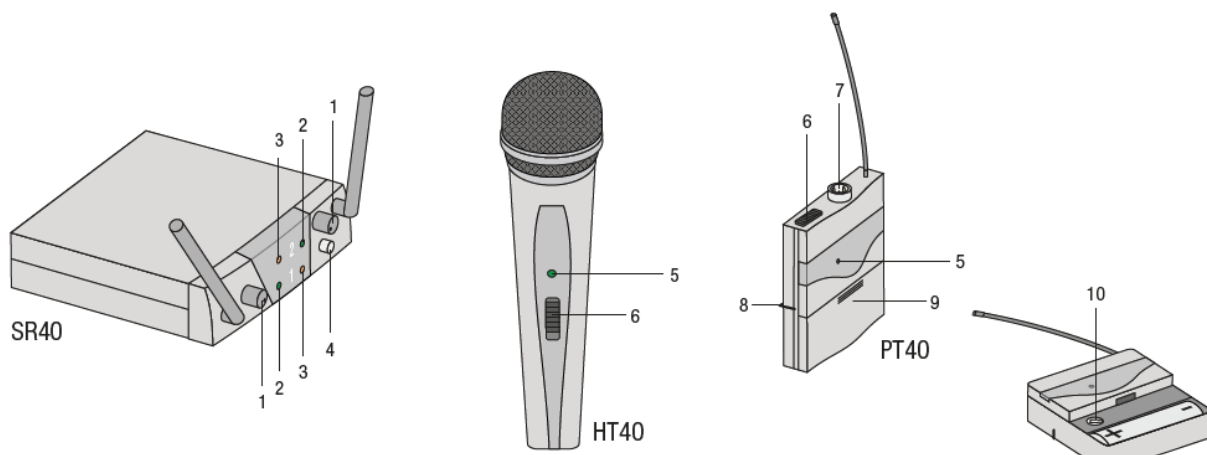
## Audio Level Adjustment:

Use the controls on the HT40 and PT40 components to adjust the audio levels according to your requirements. Monitor the AF CLIP indicator to prevent audio distortion due to high levels.

## Compliance:

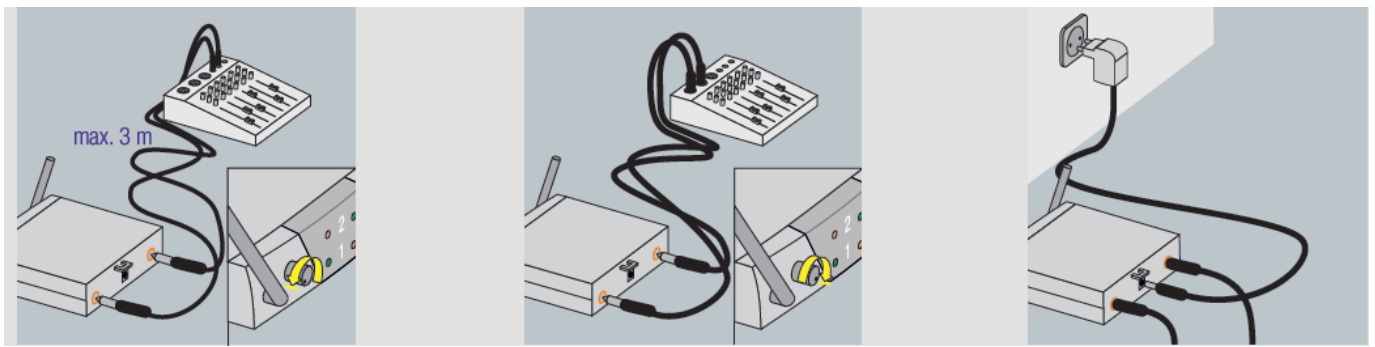
The WMS 40 mini 2 system complies with the essential requirements of Directive 1999/5/EC for use in R&TTEd countries. For more information, refer to the Declaration of Conformity available on the AKG website or contact [sales@akg.com](mailto:sales@akg.com).

## Quick Start Guide

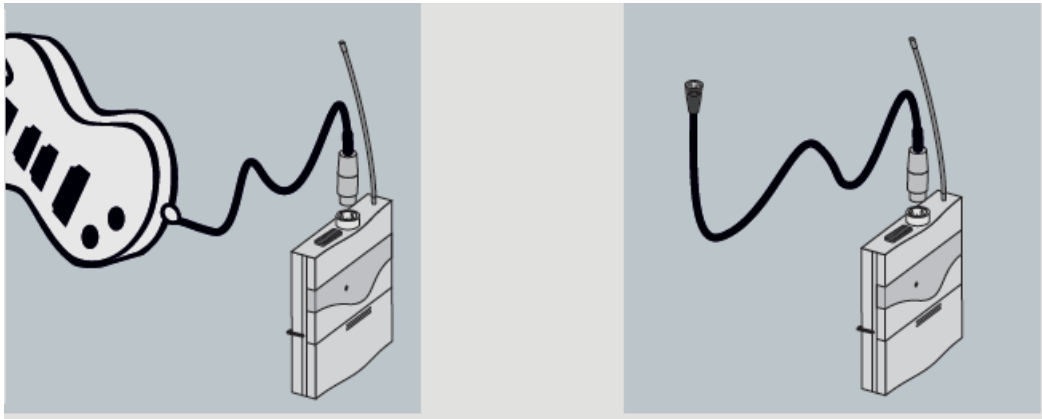


1. Volume control
2. RF OK lights up if the receiver is receiving a sufficiently strong signal; RF OK will not light up if a signal is not being received or the signal is too weak
3. AF CLIP lights up if the audio level is too high
4. On/Off button
5. LED indicating readiness for operation and battery capacity
6. On/Off slide control with MUTE function
7. Mini-XLR input jack
8. Belt clip
9. Battery compartment cover
10. GAIN potentiometer for adjusting the input level

## Setting Up

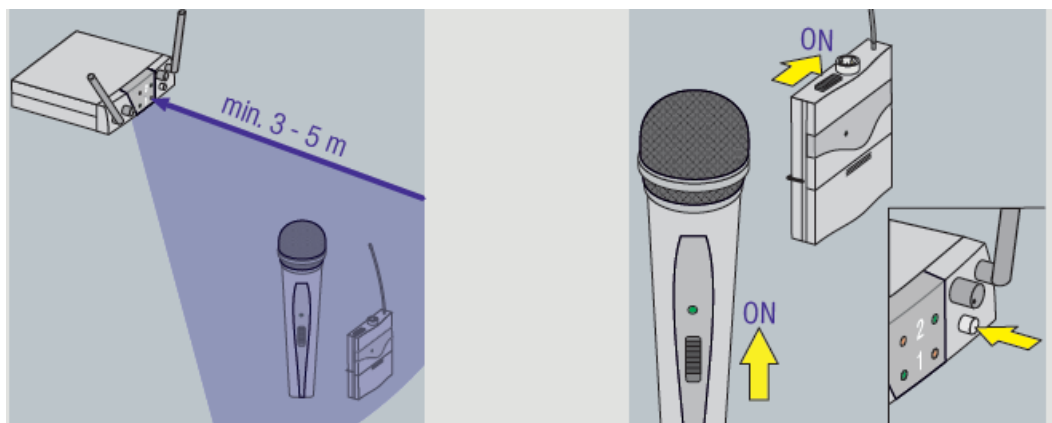


- Connect the receiver to a balanced or unbalanced input!
- Connect the receiver to the mains and insert batteries in the transmitter.



- Connect the instrument or microphone to the mini-XLR jack of the pocket transmitter.

## Operation

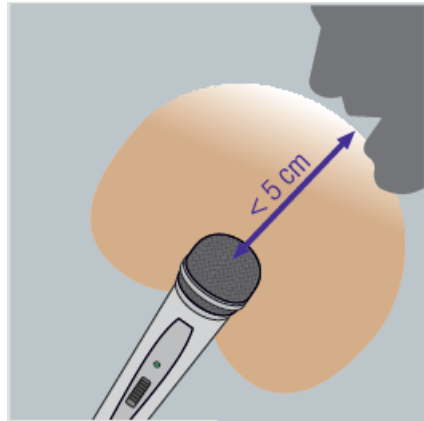


- Observe minimum distance between transmitter and receiver.
- Switch on the receiver and transmitter.

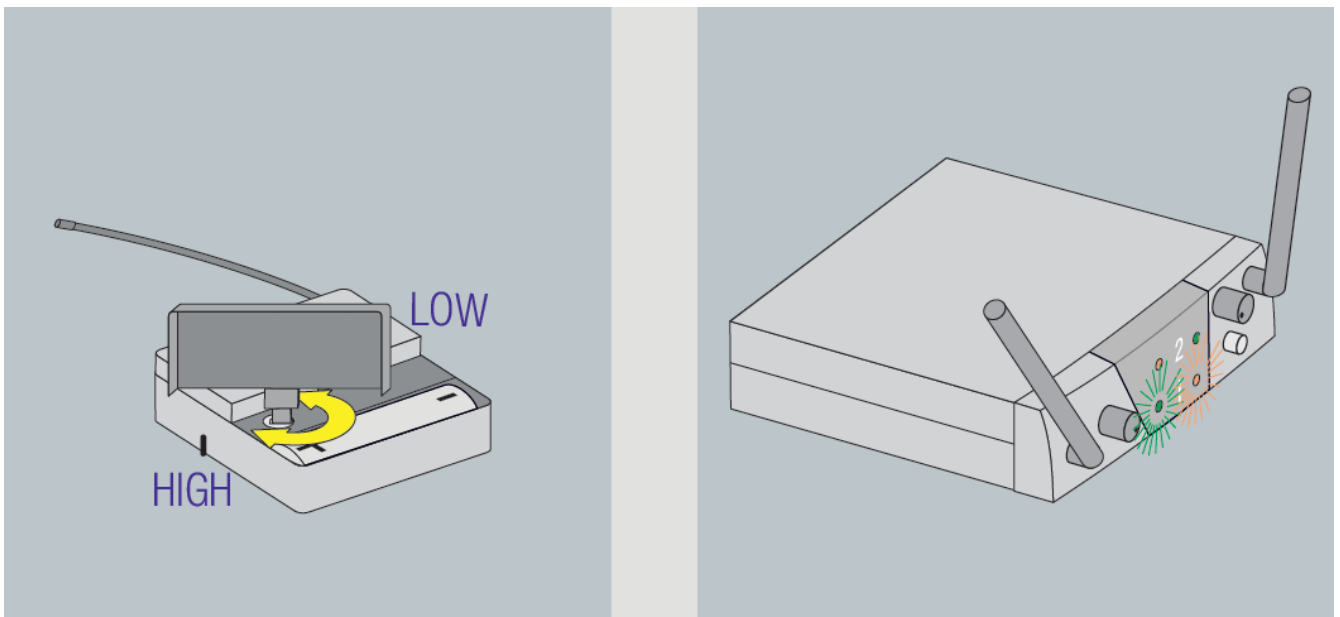


- **Green:** battery is OK and transmitter is operational; Red: replace battery soon; Does not light up: replace battery now

## Tips & Tricks



- In the case of microphones with a cardioid polar pattern, most sound attenuation occurs at 180°. These microphones should therefore preferably be used where there is an interference noise source or a loudspeaker directly opposite the speaker.
- Holding the microphone less than 5 cm from your mouth will give your voice a voluminous and punchy quality.



- Adjust the input sensitivity on the PT40 pocket transmitter using the screwdriver included in the battery compartment cover:
- If the AF CLIP lights up frequently, reduce the potentiometer setting on the PT40.
- Never let more than 2 people sing into one microphone. The angle of incidence should never be more than 35°!



## Volume Configuration

- Adjust the audio level using the Volume control on the instrument you have connected. For best results we recommend using the highest possible input level in order to obtain the best possible signal-to-noise ratio. However, even when someone is speaking loudly into the microphone you should take care to ensure that the level indicator never moves into the red zone; failure to do so can result in unpleasant distortion. Carefully increase the input level until the level indicator is just below the red zone.

## FCC

- Only for frequencies designed for use in the USA.  
(Receiver complies to Part 15, transmitter to Part 74): This equipment has been tested and found to comply with the limits for a Class B digital device, pursuant to Parts 74 and 15 of the FCC Rules. These limits are designed to provide reasonable protection against harmful interference in a residential installation. This equipment generates, uses, and can radiate radio frequency energy and, if not installed and used in accordance with the instructions, may cause harmful interference to radio communications. However, there is no guarantee that interference will not occur in a particular installation. If this equipment does cause harmful interference to radio or television reception, which can be determined by turning the equipment off and on, the user is encouraged to try to correct the interference by one or more of the following measures:
  - Reorient or relocate the receiving antenna.
  - Increase the separation between the equipment and the receiver.
  - Connect the equipment into an outlet on a circuit different from that to which the receiver is connected.
  - Consult the dealer or an experienced radio/TV technician for help. Shielded cables and I/O cords must be used for this equipment to comply with the relevant

## FCC regulations.

Changes or modifications not expressly approved in writing by AKG Acoustics may void the user's authority to operate this equipment.

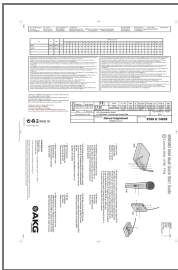
1. This device complies with Part 15 of the FCC Rules. Operation is subject to the following two conditions:
2. this device may not cause harmful interference, and

This device must accept any interference received, including interference that may cause undesired operation.

## FAQ

- **Q: Where can I find the Declaration of Conformity for the WMS 40 mini 2 system?**
  - A: You can access the Declaration of Conformity on the AKG website at <http://www.akg.com> or request a copy by emailing [sales@akg.com](mailto:sales@akg.com).
- **Q: What should I do if the AF CLIP indicator lights up?**
  - A: If the AF CLIP indicator lights up, it means the audio level is too high. Adjust the audio levels using the controls on the HT40 and PT40 components to prevent distortion.

## Documents / Resources



[AKG WMS 40 mini 2 Mini Dual Vocal Set Wireless Microphone System](#) [pdf] User Guide  
WMS 40 mini 2, WMS 40 mini 2 Mini Dual Vocal Set Wireless Microphone System, WMS 40 mi  
ni, 2 Mini Dual Vocal Set Wireless Microphone System, Vocal Set Wireless Microphone System,  
Wireless Microphone System, Microphone System, System

References

-  [Your Ultimate Resource for Millions of User Manuals](#)
- [User Manual](#)

[Manuals+](#), [Privacy Policy](#)

This website is an independent publication and is neither affiliated with nor endorsed by any of the trademark owners. The "Bluetooth®" word mark and logos are registered trademarks owned by Bluetooth SIG, Inc. The "Wi-Fi®" word mark and logos are registered trademarks owned by the Wi-Fi Alliance. Any use of these marks on this website does not imply any affiliation with or endorsement.