

AJCLOUD
AJCLOUD WS-23
Smart Pet Feeder
with Camera



AJCLOUD WS-23 Smart Pet Feeder with Camera User Manual

[Home](#) » [AJCLOUD](#) » AJCLOUD WS-23 Smart Pet Feeder with Camera User Manual 

Contents

- [1 AJCLOUD WS-23 Smart Pet Feeder with Camera](#)
- [2 Product List](#)
- [3 Product Overview](#)
- [4 Product Installation](#)
- [5 Product Use](#)
- [6 Smart Control](#)
- [7 Cleaning and Maintenance](#)
- [8 Specifications](#)
- [9 Safety Instructions](#)
- [10 FCC Warning](#)
- [11 FAQ](#)
- [12 Documents / Resources](#)
 - [12.1 References](#)
- [13 Related Posts](#)

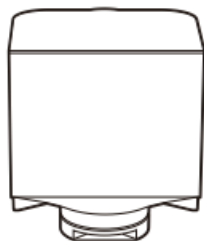
AJCLOUD

AJCLOUD WS-23 Smart Pet Feeder with Camera



Product List

Please confirm the accessories before installation and use. (Batteries and screwdrivers are not included and need to be purchased separately)



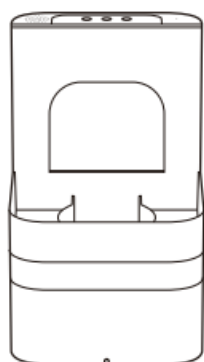
Food Tank



Food Bowl



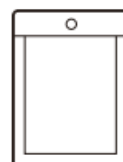
User Manual



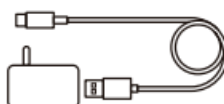
Main Unit



Food Bowl Holder



Desiccant Pack



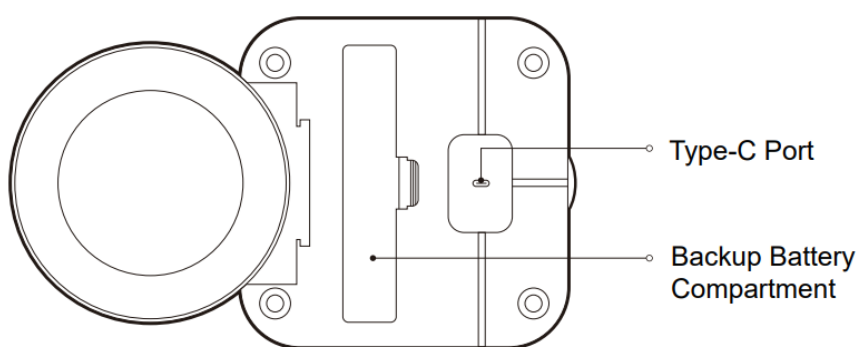
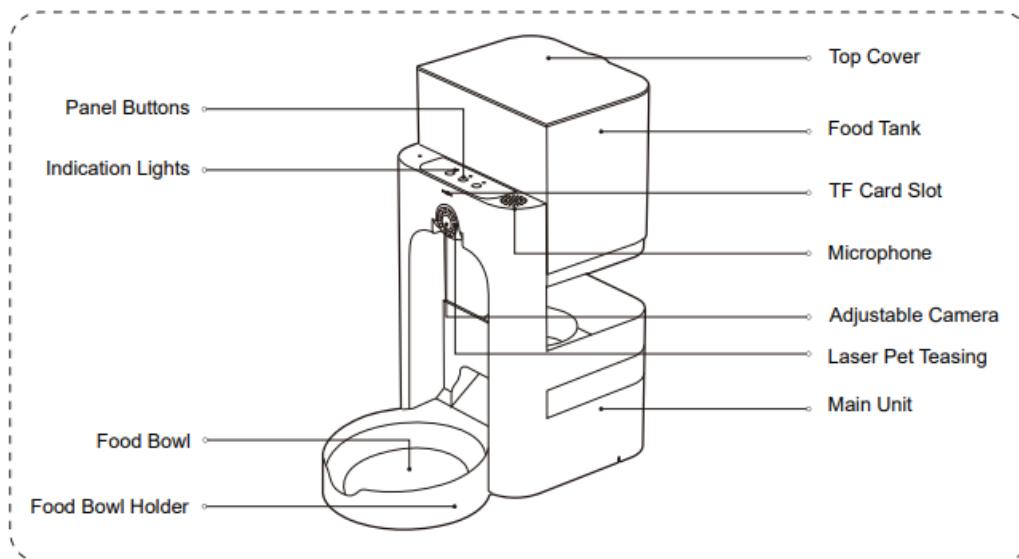
Adapter



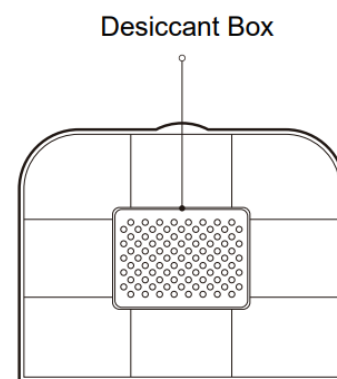
Cleaning Brush

Note: To provide better products, we will periodically make improvements.
The product images may slightly differ from the actual product. Please refer to the actual product.

Product Overview



Bottom View of Main Unit

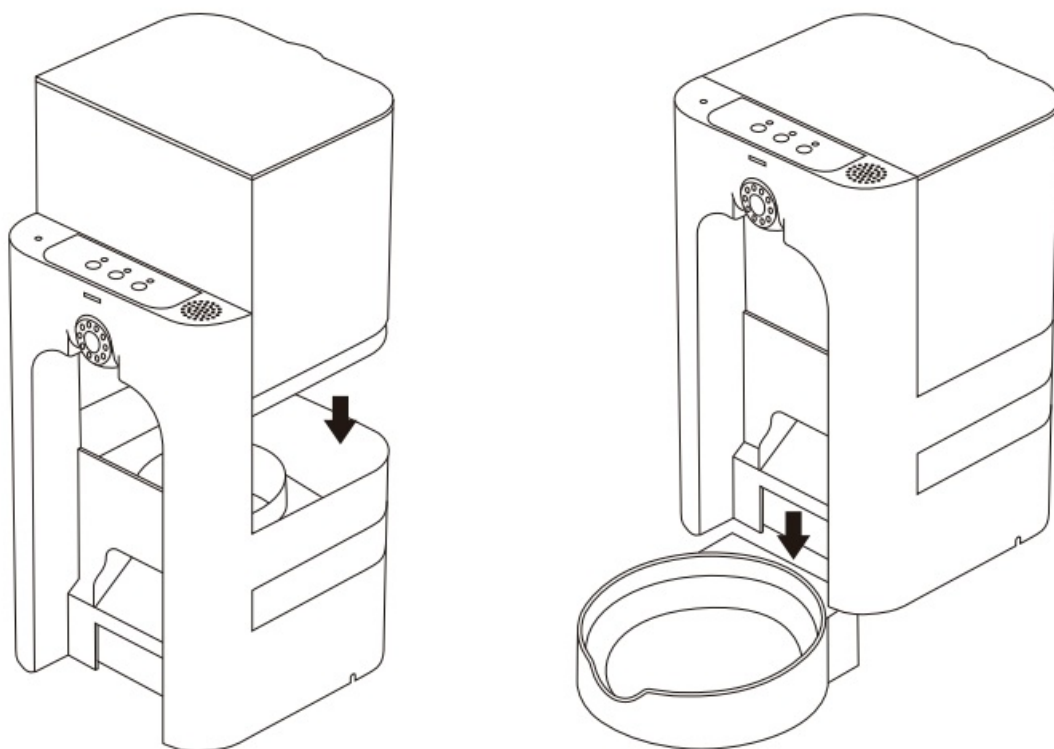


Desiccant Box

Product Installation

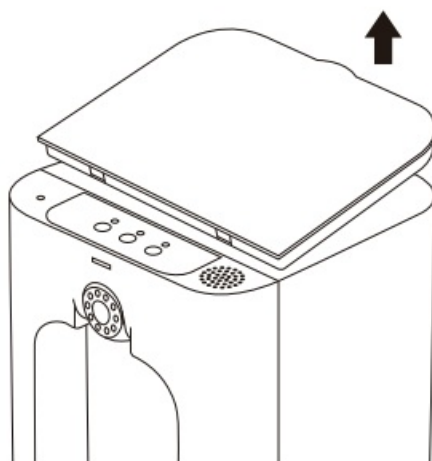
Assemble the Main Unit

1. Take out the food bowl, food bowl holder, and adapter inside the food tank before installation.
2. Place the food bowl holder on a flat table or floor and then place the food bowl inside it.
3. Pick up the main unit, align it with the food bowl holder, and place it vertically down.
4. Pick up the food tank, align it with the main unit, and place it vertically down.



Install the Desiccant

1. Hold the machine and lift the top cover upwards to remove it.

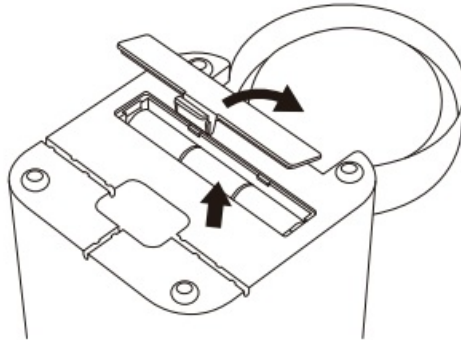


2. Open the desiccant box, take out the desiccant packet, spread it evenly inside, and then close the desiccant box.



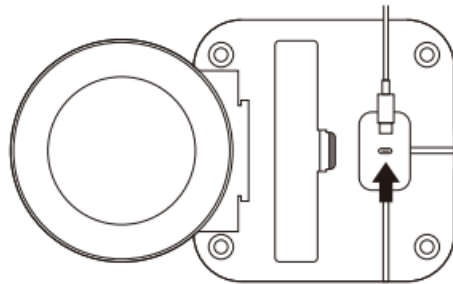
Install the Backup Battery

1. Remove the power cover, insert three size C batteries into the battery compartment.
2. Pay attention to the polarity during installation and finally close the power cover.



Connect the Power

Take out the power adapter and insert one end into the Type-C port at the bottom of the main unit.



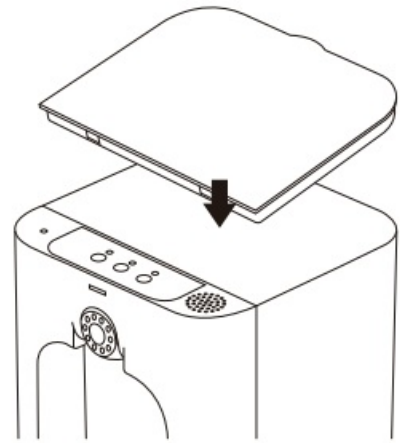
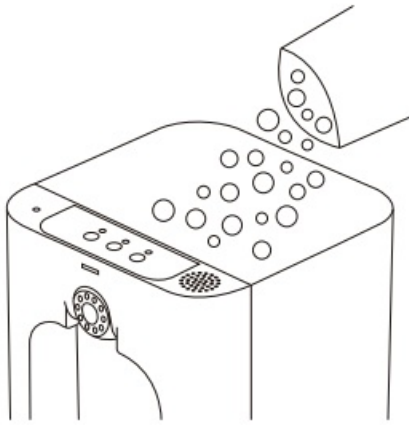
Whether to install the batteries or not depends on individual needs. (Please purchase batteries separately. Only alkaline batteries can be used.)

Note: Replace the batteries promptly when the power is low. Check and replace the batteries during holidays.

Product Use




Adding Pet Food

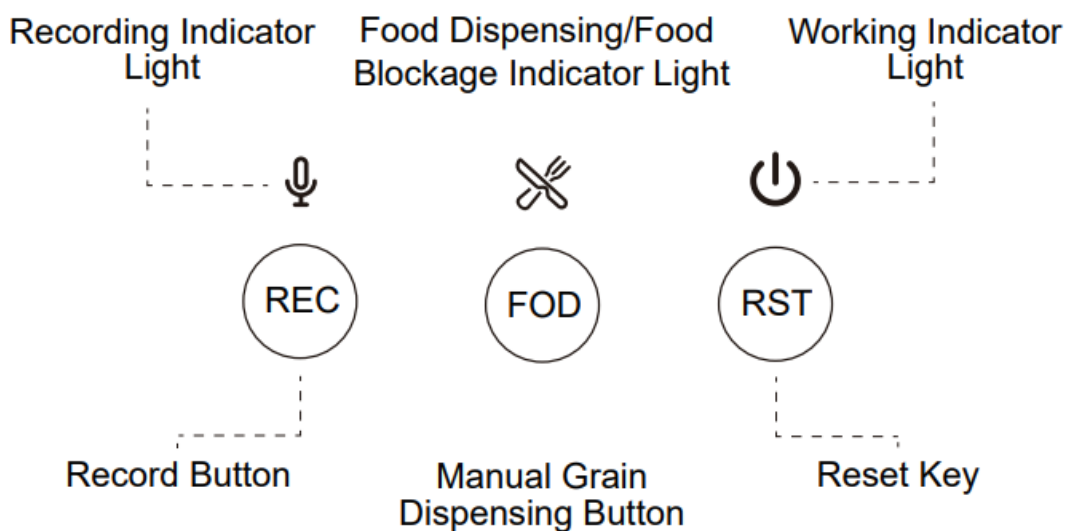
1. Open the top cover and add the appropriate amount of pet food.
2. Then close the top cover.



Indicator Lights and Buttons Instructions

Indicator Lights Description:

-  When recording, the red light will turn on. When the power is turned on, the red light will flash briefly.
-  The blue light will be on during playback and food dispensing. It will flash quickly if the grain is stuck.
- 
 - Connecting the power will turn on a green light.
 - When the battery is low, the yellow light will flash.
 - When connecting to the network, the green light will flash rapidly.
 - Once the connection is successful, the green light will remain on.



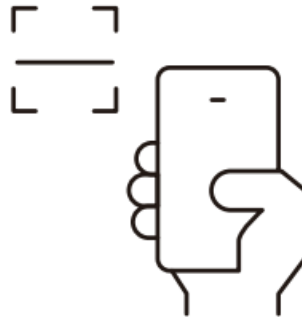
When turning on the power, the red light flashes, then the green light stays on. After 20 seconds, an alarm sounds. In 10 seconds, there will be a notification waiting for WiFi connection, then a power indicator light starts flashing slowly.

Buttons Description:

- REC Long press to start recording, release to end recording. Supports 15 seconds of recording, double press to delete the recording.
- FOD Short press for manual feeding, long press for initialization settings.
- RST Long press for 3 seconds to reset the device.

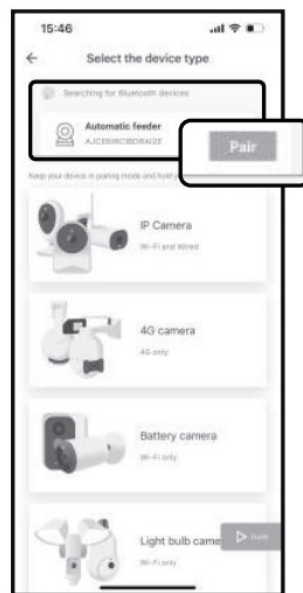
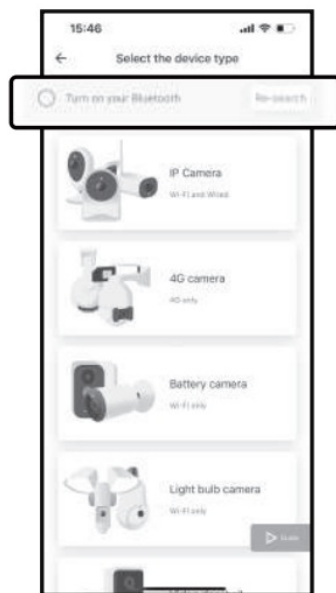
Smart Control

Download and Install the App: Download “AJCLOUD” from the app store

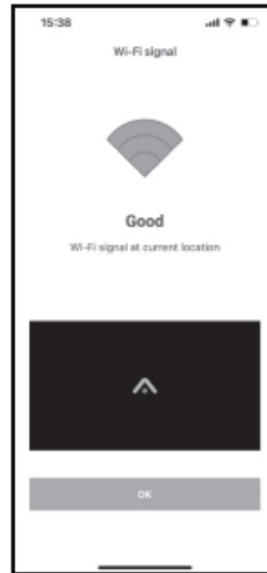


Adding Device

METHOD 1: Configure Wi-Fi via Bluetooth as Optimal Recommendation (Some Models Do Not Support)

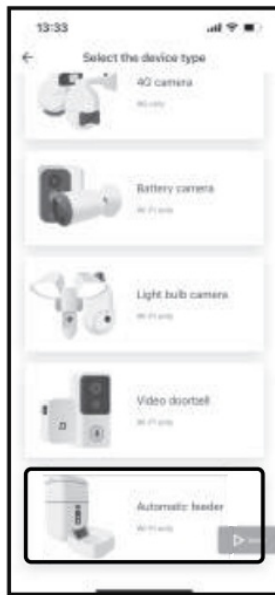


1. Enter the Homepage of this app and tap “Add device”.
2. Turn on your Bluetooth and location services.
3. After turning on Bluetooth, select the device and tap “Pair”.
4. Select a Wi-Fi and input the password. 2.4GHz and 5GHz Wi-Fi is supported.

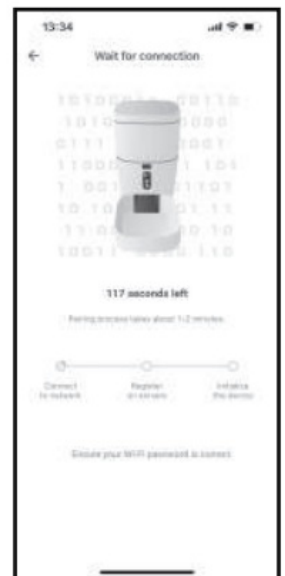
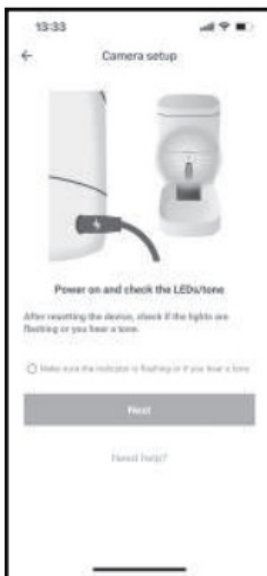


5. Wait for the connection. Once you hear “Pairing Successful”, you can start using it.
6. After successful pairing, rename the device or continue using the current name.
7. Ensure the Wi-Fi signal strong and then tap “OK”.
8. Tap the video image to enter the specific operation.

METHOD 2: Configure Wi-Fi via QR Code



1. Enter the Homepage of this app and tap “Add device”.
2. Select the “Automatic feeder” in the device type.
3. Select “Wi-Fi connection by QR code”.
4. Confirm that the feeder is connected to power.



5. Insert until the indicator light flashes or you hear a beep tone.
6. Select a Wi-Fi and input the password. 2.4GHz and 5GHz Wi-Fi is supported.
7. Place the QR code on your phone 4-12 inches in front of the camera lens. Tap “Next” when you hear a tone or see the light flashing.
8. Wait for the connection. Once you hear “Pairing Successful”, you can start using it.
- 9.



After successful pairing, rename the device or continue using the current name.

10. Ensure the Wi-Fi signal strong and then tap “OK”.
11. Tap the video image to enter the specific operation.

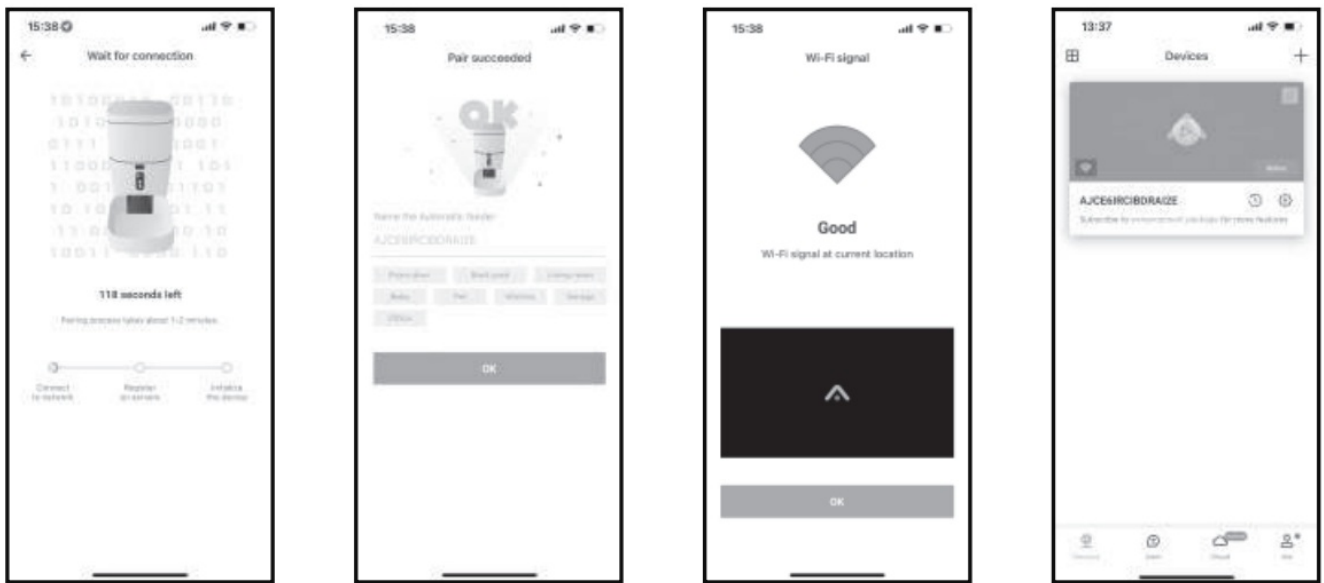
METHOD 3: Configure Wi-Fi via Wi-Fi Hotspot



1. Enter the Homepage of this app and tap “Add device”.
2. Select the “Automatic feeder” in the device type.
3. Select “Wi-Fi” connection by Soft-AP”
4. Confirm that the feeder is connected to power.

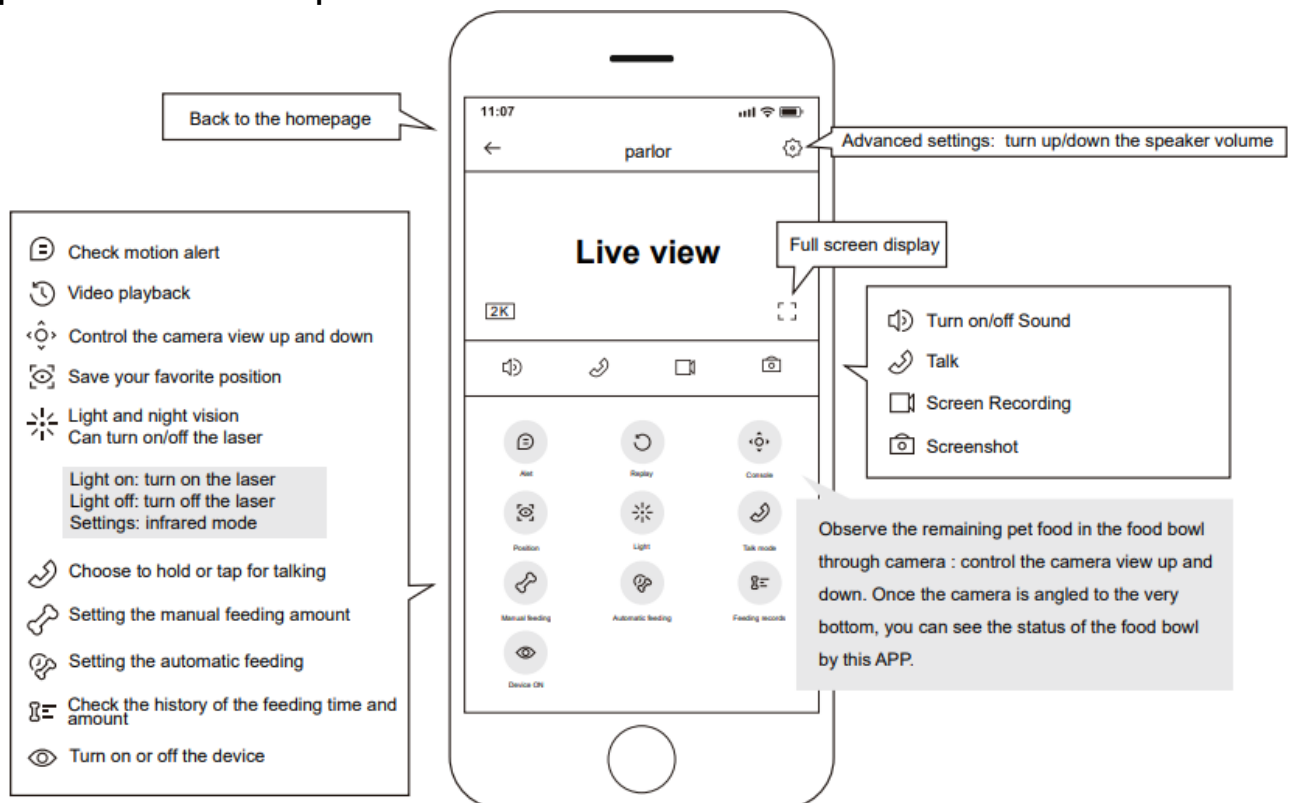


5. Confirm the working indicator light is flashing or hear the prompt tone.
6. Select “Go to Settings” to connect to the Wi-Fi hotspot named “AJ_xxx”.
7. Connect your phone to the Wi-Fi network named “AJ_xxx”.
8. Select a Wi-Fi and input the password. Only 2.4GHz Wi-Fi is supported.



9. Wait for the connection. Once you hear “Pairing Successful”, you can start using it.
10. After successful pairing, rename the device or continue using the current name.
11. Ensure the Wi-Fi signal strong and then tap “OK”.
12. Tap the video image to enter the specific operation.

Operation Interface Description



Operation Interface Display

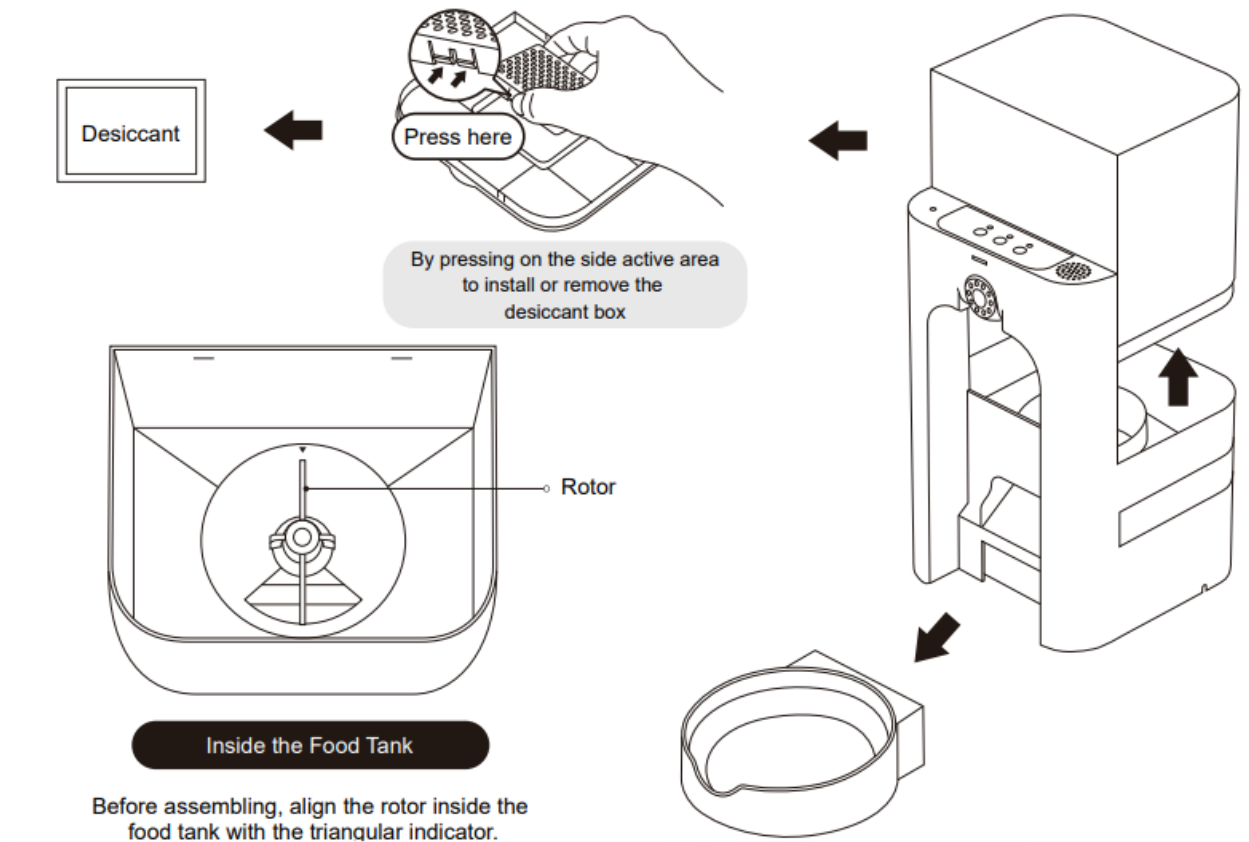
- You can set a feeding schedule through this App, and the device will dispense food according to the set schedule with fixed times and amounts each day.
- You can check the dispensing and eating status in time through this App.
- You can view the live camera, interact with your pets in real-time voice, share and playback videos.
- The camera with laser and infrared light allows you to tease your pet remotely through this App, bringing you

and your pet more fun.

Cleaning and Maintenance

1. Open the top cover and take out the desiccant pack, then remove the food bowl and food bowl holder.
2. Remove the food tank, separating it from the main unit.
3. Add the appropriate amount of detergent to clean the food tank, main unit, top cover, food bowl, and food bowl holder and rinse.
4. Dry and reassemble them.

When cleaning the food tank interior and rotor, do not use sponges or soft cloths, and avoid using hard cleaning tools to prevent scratching on the plastic parts, which can affect the normal operation of the sensors. The main unit should not be exposed to water or soaked, but can be wiped with a damp paper towel.



Before assembling, align the rotor inside the food tank with the triangular indicator.

Specifications

Product Name	Smart Pet Feeder (with Camera)	Product Material	Plastic
Product Size	190x190x312 mm	Product Weight	Based on actual product weight
Input	5V -- 2A	Food Storage Capacity	4L
Rated Power	10W	Applicable Range	Cats and small dogs
Connection Method	Wi-Fi via Bluetooth / QR Code / Hotspot	Video Resolution	1920*1080
Power Supply Parameters	5V external power + 3x size C batteries	Teasing Method	Laser
Suitable Food	Recommended to use 5-16mm dry non-sticky pet food	Camera Rotation	Up and Down

Notice to Users

- Before using, please read this manual carefully. Once installed and in use, it means you have read and accepted the following safety instructions.
- The company will not be held responsible for any damage caused by abnormal or improper use.
- The final interpretation belongs to our company.

Safety Instructions

*Failure to comply with the following terms may result in improper operation or other unexpected issues.

- Please strictly follow the manual for installation and use of the device.
- Do not forcibly disassemble the device.
- Do not scratch or abrade the camera with sharp objects.
- Use indoors only. Do not place it where it can be exposed to direct sunlight, as it may affect the device's functions. Keep it away from fire sources.
- The device is powered by low voltage, but if a pet bites on the power cord it can still potentially cause electric leaks. Please use it correctly according to the user manual.
- Use the original power adapter to avoid device damage and safety hazards.
- Keep the device flat. Do not overturn it as it may malfunction.
- Do not feed anything other than pet food through the feeder, as it may cause the device to malfunction and even safety issues for your pet.
- Do not immerse the device in water or use in wet.
- To prevent pets from tipping over with the product, please place the feeder out of their reach.
- Do not place this device at a high location to prevent it falling as it may cause damage or pose a safety risk to pets. Dry and put the food tank back after cleaning to use it again.
- Do not use the device if there is water on the power cord or plug.
- Unplug the power cord before installing and disassembling.
- Remove the battery and unplug the power cord, then store the device after washing and drying if stop using it. Ensure children using under adult guidance.
- Only qualified personnel should repair the device to avoid any accidents.
- Use the same rating when an extension cord is needed.

- If not used for three months, please check the battery capacity (this product uses alkaline batteries only).
- Please carefully follow the manual and the operations listed above.

FCC Warning

This device complies with Part 15 of the FCC Rules. Operation is subject to the following two conditions:

1. This device may not cause harmful interference, and
2. This device must accept any interference received, including interference that may cause undesired operation.

NOTE 1: This equipment has been tested and found to comply with the limits for a Class B digital device, pursuant to part 15 of the FCC Rules. These limits are designed to provide reasonable protection against harmful interference in a residential installation. This equipment generates, uses and can radiate radio frequency energy and, if not installed and used in accordance with the instructions, may cause harmful interference to radio communications. However, there is no guarantee that interference will not occur in a particular installation. If this equipment does cause harmful interference to radio or television reception, which can be determined by turning the equipment off and on, the user is encouraged to try to correct the interference by one or more of the following measures:

- Reorient or relocate the receiving antenna.
- Increase the separation between the equipment and receiver.
- Connect the equipment into an outlet on a circuit different from that to which the receiver is connected.
- Consult the dealer or an experienced radio/TV technician for help.

NOTE 2: Any changes or modifications to this unit not expressly approved by the party responsible for compliance could void the user's authority to operate the equipment.

RF Exposure Statement

To maintain compliance with FCC'S RF Exposure guidelines, This equipment should be installed and operated with minimum distance of 20cm between the radiator and your body. This device and its antenna(s) must not be co-located or operation in conjunction with any other antenna or transmitter.

FAQ

How do I connect the device to Wi-Fi?

Method 1:

1. Enter the Homepage of the app and tap Add device.
2. Turn on Bluetooth and location services.
3. Select the device and tap Pair after turning on Bluetooth.
4. Select a Wi-Fi network and input the password.
5. Wait for successful pairing confirmation to start using the device.


Q: Will data be lost after network or power disconnection?

A: The built-in battery allows continuous recording without loss. When working with batteries, it will continue to work for a period of time (dual power supply is recommended).

Q: Why can not the main unit be rinsed?

A: Because the main unit is equipped with precise electronic components and circuit boards. For easy cleanup, just wipe the outside of the main unit with a wet rag after powering off.

Documents / Resources

	<p>AJCLOUD WS-23 Smart Pet Feeder with Camera [pdf] User Manual 2BKCP-WS-23, 2BKCPWS23, WS-23 Smart Pet Feeder with Camera, WS-23, Smart Pet Feeder with Camera, Pet Feeder with Camera, Feeder with Camera, Camera, Feeder</p>
---	---

References

- [User Manual](#)

Manuals+, Privacy Policy

This website is an independent publication and is neither affiliated with nor endorsed by any of the trademark owners. The "Bluetooth®" word mark and logos are registered trademarks owned by Bluetooth SIG, Inc. The "Wi-Fi®" word mark and logos are registered trademarks owned by the Wi-Fi Alliance. Any use of these marks on this website does not imply any affiliation with or endorsement.