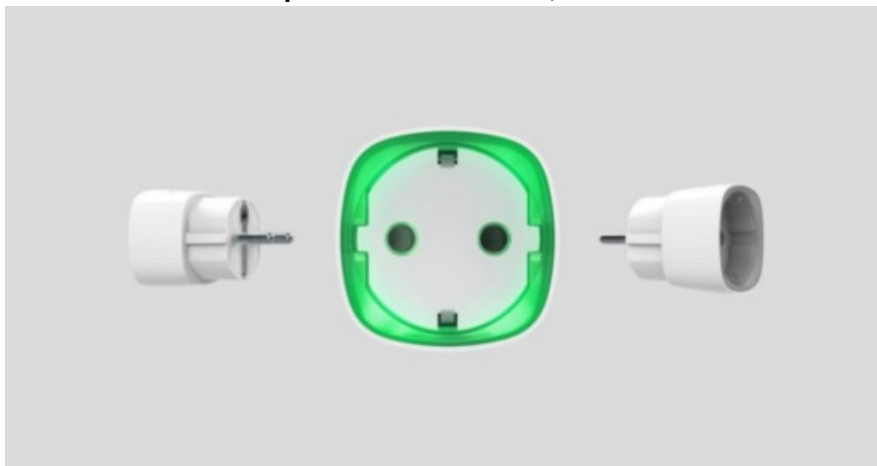




AJAX type F Socket User Manual

[Home](#) » [ajax](#) » AJAX type F Socket User Manual 

Socket User Manual
Updated December 28, 2020



The socket is a wireless indoor smart plug with a power-consumption meter for indoor use. Designed as a European plug adapter (Schuko type F), the Socket controls the power supply of electrical appliances with a load of up to 2.5 kW. The socket indicates the load level and is protected from overload. Connecting to the Ajax security system via a secured **Jeweller** radio protocol, the device supports communication at a distance of up to 1,000 m in line of sight.



Socket operates with Ajax hubs only and does not support connecting via Oxbridge Plus cartridge or integration modules.

Use scenarios to program actions of **automation devices** (Relay, wall switch, or Socket) in response to an alarm, **Button** press, or a schedule. A scenario can be created remotely in the Ajax app.

How to create and cone a scenario in the Ajax security system

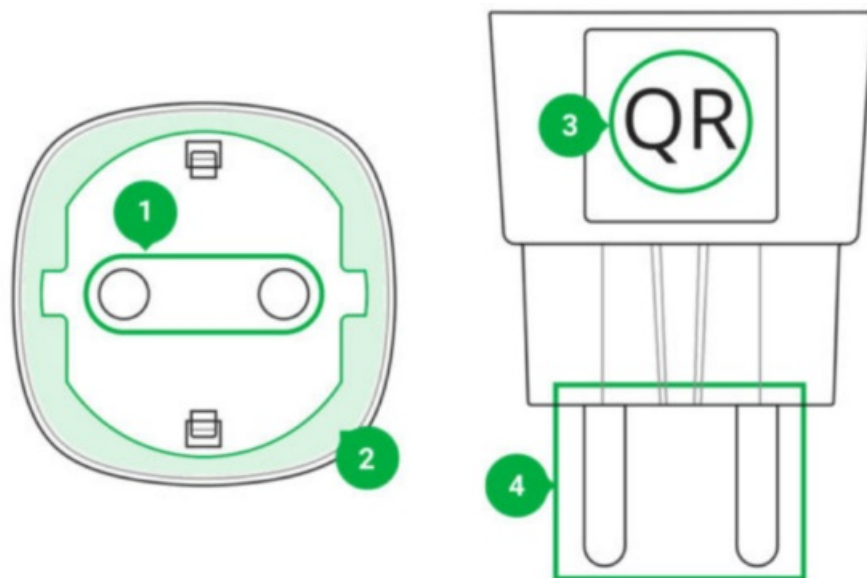
The Ajax security system can be connected to a central monitoring station of a security company.

Buy a smart plug Socket

Contents

- 1 Functional Elements
- 2 Operating Principle
- 3 Connecting
- 4 States
- 5 Settings
- 6 Indication
- 7 Functionality Testing
- 8 Installation of the Device
- 9 Maintenance
- 10 Tech specs
- 11 Complete Set
- 12 Warranty
- 13 Documents / Resources
 - 13.1 References
- 14 Related Posts

Functional Elements



- 1. Two-pin socket
- 2. LED border
- 3. QR Code
- 4. Two-pin plug

Operating Principle

Socket switches on/off the 230 V power supply, opening one pole by the user command in the **Ajax app** or automatically according to **a scenario, Button press, or a schedule**.

The socket is protected against voltage overload (exceeding the range of 184–253 V) or overcurrent (exceeding 11 A). In case of overload, the power supply switches off, resuming automatically when voltage is restored to normal values. In case of overcurrent, the power supply switches off automatically, but can only be restored manually by the user command in the Ajax app.



The maximum resistive load is 2.5 kW. When using inductive or capacitive loads, the maximum switching

current is reduced to 8 A at 230 V!

Socket with e-version 5.54.1.0 and higher can operate in pulse or bistable mode. In this e-version you can also select the relay contact status:

Normally closed — Socket stops supplying power when activated, and resumes when turned off.

Normally open — Socket supplies power when activated, and stops feeding when turned off.

Socket with e-version below 5.54.1.0 only works in bistability mode with a normally open contact.

How to e-version the device?

In the app, users can check the power or amount of energy consumed by electrical appliances connected via Socket.



At low loads (up to 25 W), current and power consumption indications may be displayed incorrectly due to hardware limitations.

Connecting

Before connecting the device

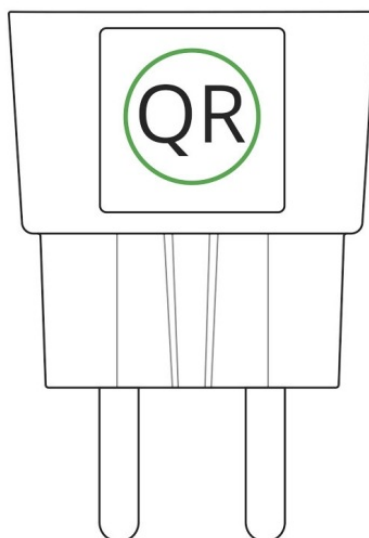
1. Switch on the hub and check its Internet connection (the logo glows white or green).
2. Install the **Ajax app**. Create the account, add the hub to the app, and create at least one room.
3. Make sure that the hub is not armed, and does not update by checking its status in the Ajax app.



Only users with administrator rights can add a device to the app.

To pair the Socket with the hub

1. Click Add device in the Ajax app.
2. Name the device, scan it, or enter the **QR code** manually (located on the case and packaging), and select the room.



3. Plug the Socket into a power outlet and wait 30 seconds — the LED frame will be green.
4. Click **Add** — the countdown will begin.

5. The socket will appear in the list of hub devices.

The device status update depends on the ping interval set in the hub settings. The default value is 36 seconds.

If the device failed to pair, wait 30 seconds and then retry.

For detection and pairing to occur, the device should be located in the coverage area of the hub's wireless network (at the same object). A connection request is transmitted only at the moment of switching on the device.

When pairing the hub with the smart plug that was previously paired with another hub, make sure that it was unpaired with a former hub in the Ajax app. For correct unpairing, the device should be in the coverage area of the hub's wireless network (at the same object): when unpaired correctly, the Socket LED frame continuously blinks green.

If the device has not been correctly unpaired, do the following to connect it to the new hub:

1. Make sure that the Socket is outside the coverage area of the former hub's wireless network (the indicator of the communication level between the device and the hub in the app is crossed out).
2. Select the hub with which you want to pair Socket.
3. Click **Add Device**.
4. Name the device, scan or enter the **QR code** manually (located on the case and packaging), and select the room.
5. Click **Add** — the countdown will begin.
6. During the countdown, for a few seconds, give Socket at least 25 W load (by connecting and disconnecting a working kettle or lamp).
7. The socket will appear in the list of hub devices.



The socket can be connected to one hub only.

States

1. Devices
2. Socket

Parameter	Value
Jeweler Signal Strength	Signal strength between the hub and the Socket
Connection	Connection status between the hub and the Socket
Routed Through ReX	Displays the status of using the ReX range extender
Active	State of the Socket (turned on/off)
Voltage	The current input voltage level of the Socket
Current	Current at the Socket input
Current protection	Indicates whether the overcurrent protection is enabled
Voltage protection	Indicates whether the overvoltage protection is enabled
Power	Current consumption in W
Electric Energy Consumed	The electric power consumed by the device is connected to the Socket The counter is reset when the Socket loses the power
Temporary Deactivation	Displays the status of the device: active or completely disabled
Firmware	Device e version
Device ID	Device identifier

Settings

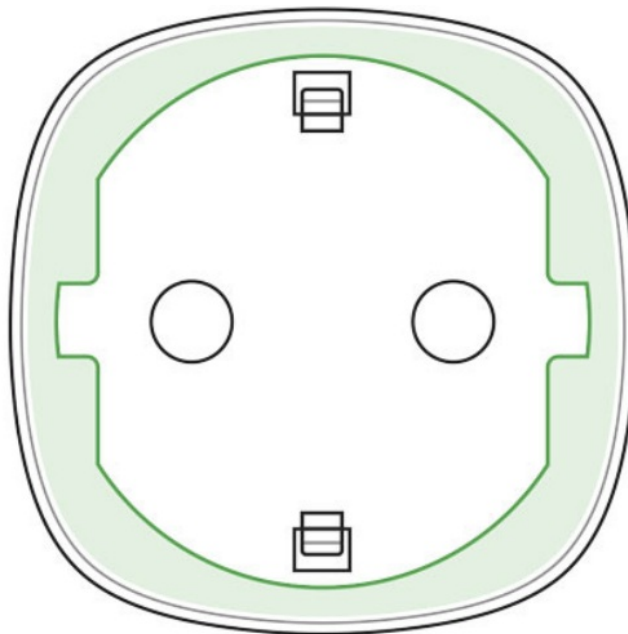
1. Devices

2. Socket

3. Settings 

Setting	Value
First	The device name can be edited
Room	Selecting the virtual room to which the device is assigned
Mode	Selecting Socket operation mode: Pulse — when activated, Socket generates a pulse of a given duration Bistable — Socket, when activated, changes the state of contacts to the opposite Settings are available with firmware version 5.54.1.0 and higher
Contact status	Normal contact state <ul style="list-style-type: none"> • Normally closed • Normally open
Pulse duration	Selecting the pulse duration in the pulse mode: From 0.5 to 255 seconds
Overcurrent Protection	If enabled, the power supply switches off if the current load exceeds 11A, if disabled the threshold is 6A (or 13A for 5 seconds)
Overvoltage protection	If enabled, the power supply switches off in case of a voltage surge beyond the range of 184 – 253 V
Indication	The option of disabling the LED frame of the device
LED Brightness	The option of adjusting the brightness of the LED frame of the device (high or low)
Scenarios	Opens the menu for creating and controlling scenarios Learn more
Jeweller Signal Strength Test	Switches the device to the signal strength test mode
User Guide	Opens the Socket User Guide
Temporary Deactivation	Allows the user to deactivate the device without removing it from the system. The device will not execute system commands and participate in automation scenarios. All notices will be ignored Please note that the deactivated device will save its current state (active or inactive)
Unpair Device	Disconnects the device from the hub and deletes its settings

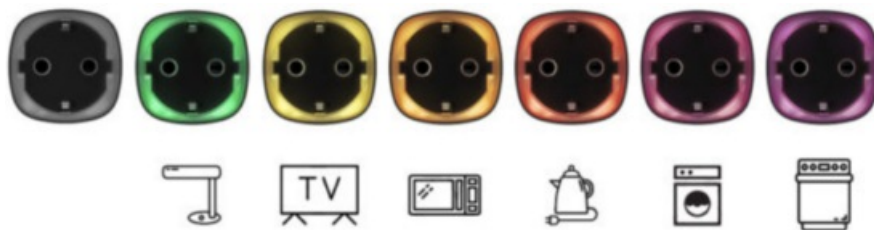
Indication



The socket informs the user of the power level consumed by connected appliances using the LED.



If the load is more than 3 kW (purple), the current protection activates.



Load level	Indication
No power on the Socket	Don't have any indication
Socket turned off	Blue
The socket turned on, but no load	Green
~550 W	Yellow
~1250 W	Orange
~2000 W	Red
~2500 W	Dark red
~3000 W	Purple
One or more types of protection triggered	Smoothly lights up and goes out red
Hardware failure	Quick red

The exact power can be seen in the **Ajax Security System application**

Functionality Testing

The Ajax security system allows conducting tests for checking the functionality of connected devices. The tests do not start immediately but within a period of 36 seconds when using default settings. The test time starts depending on the settings of the detector ping interval (the “**Jeweller**” menu in the hub settings).

Jeweler Signal Strength Test

Installation of the Device

The location of the Socket depends on its remoteness from the hub, and obstacles hindering the radio signal transmission: walls, and large objects inside the room.



Do not install the device near sources of magnetic ed objects, wireless chargers, etc.) and inside rooms with temperature and humidity outside the permissible limits!

Check the Jeweller signal level at the installation location. If the signal level is low (one bar), we cannot guarantee the stable operation of the device.

If the device has a low or unstable signal strength, use a **ReX radio signal range extender**.

The socket is designed to connect to a European two-pin socket (Schuko type F).

Maintenance

The device does not require maintenance.

Tech specs

Actuating element	Electromagnetic relay
Service life	At least 200,000 switches
Voltage and type of external power supply	110–230 V, 50/60 Hz
Voltage protection for 230 V mains	Yes, 184–253 V
Maximum load current	11 A (continuous), 13A (up to 5 s)
Operating modes	<ul style="list-style-type: none"> • Pulse and bistable (e-version is 5.54.1.0 or higher. Manufacture date from March 4, 2020) • Only bistable (e-version is lower than 5.54.1.0)
Pulse duration	0.5 to 255 seconds (e-version is 5.54.1.0 or higher)
Maximum current protection	Yes, 11 A if the protection is turned on, up to 13 A if the protection is turned off
Maximum temperature protection	Yes, +85°C. The socket turns off automatically if the temperature is exceeded
Electric shock protection class	Class I (with grounding terminal)
Energy consumption parameter check	Yes (current, voltage, power consumption)
Load indicator	Yes
Output power (resistive load at 230 V)	Up to 2.5 kW
Average energy consumption of the device on standby	Less than 1 W·h
Frequency band	868.0 – 868.6 MHz
Compatibility	Operates with all Ajax hubs , and range extenders
Maximum radio signal power	8,97 mW (limit 25 mW)
Radio signal modulation	GFSK
Radio signal range	Up to 1000 m (when there are no obstacles)
Installation method	In power outlet
Operating temperature range	From 0°C to +40°C
Operating humidity	up to 75%
Protection class	IP20
Overall dimensions	65.5 × 45 × 45 mm (with plug)
Weight	58 g



In the case of using inductive or capacitance load, the maximum switched current is reduced to 8 A at 230 V AC!

Complete Set

1. Socket
2. Quick Start Guide

Warranty

Warranty for the “AJAX SYSTEMS MANUFACTURING” LIMITED LIABILITY COMPANY products is valid for 2 years after the purchase.




If the device does not work correctly, you should t service—in half of the cases, technical issues can be solved remotely!

The full text of the warranty
User Agreement
Customer support: support@ajax.systems

Documents / Resources

	<p>AJAX type F Socket [pdf] User Manual type F, Socket, type F Socket</p>
-----------------------------------------------------------------------------------	-----------------------------------------------------------------------------------------------

References

- [End user agreement - Ajax Systems](#)
- [Warranty - Ajax Systems](#)
- [Jeweller radio technology | Ajax Systems](#)
- [Current product lines of the Ajax security system](#)
- [Current product lines of the Ajax security system](#)
- [Current product lines of the Ajax security system](#)
- [Wireless panic button with control mode | Ajax Systems](#)
- [ocBridge Plus — Module for Ajax devices integration with wired systems](#)
- [ReX — Intelligent radio signal range extender | Ajax Systems](#)
- [Socket \(type F\) — Wireless smart plug with energy monitor](#)
- [uartBridge — Module for Ajax devices integration with third-party wireless alarms systems](#)
- [Automation scenarios | Your Ajax security automation](#)
- [Software | Ajax Systems](#)
-  [How to find out the device firmware version | Ajax Systems Support](#)
-  [How to create and configure a scenario in the Ajax system | Ajax Systems Support](#)
-  [How to create and configure a scenario in the Ajax system | Ajax Systems Support](#)
-  [How to create and configure a scenario in the Ajax system | Ajax Systems Support](#)

-  [What is Jeweller Signal Strength Test | Ajax Systems Support](#)

Manuals+.