

AJAX Smart Button Wireless Panic User Manual

[Home](#) » [ajax](#) » AJAX Smart Button Wireless Panic User Manual 

Contents

- [1 AJAX Smart Button Wireless Panic](#)
- [2 Functional Elements](#)
- [3 Operating Principle](#)
- [4 Connecting the Button to the Ajax Security System](#)
- [5 States](#)
- [6 Configuration](#)
- [7 Operating indication](#)
- [8 Use cases](#)
 - [8.1 Panic Mode](#)
 - [8.2 Control Mode](#)
- [9 Mute Interconnected Fire Detectors Alarm](#)
- [10 How to x Button](#)
- [11 Maintenance](#)
- [12 Technical Specifications](#)
- [13 Complete Set](#)
- [14 Warranty](#)
- [15 Documents / Resources](#)
 - [15.1 References](#)
- [16 Related Posts](#)



AJAX Smart Button Wireless Panic

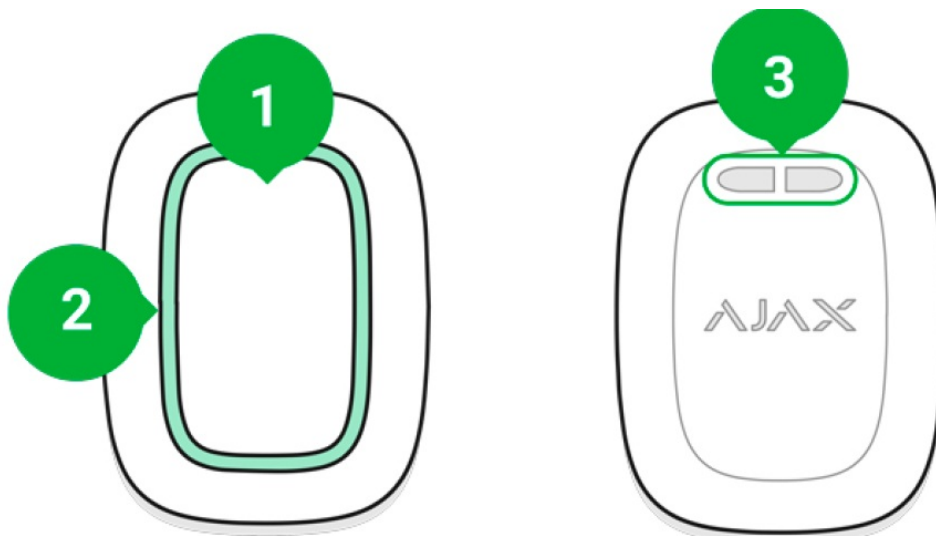


Button is a wireless panic button with protection against accidental press and additional mode to control automation devices.

It is compatible with Ajax hubs only and has no support for ocBridge Plus and uartBridge integration modules. Button is connected to the security system and configured via Ajax apps on iOS, Android, macOS, and Windows. The users are alerted of all alarms and events via push notifications, SMS, and phone calls (if enabled).

Functional Elements

1. Alarm button
2. Indicator lights
3. Button mounting hole



Operating Principle

Button is a wireless panic button that, when pressed, transmits an alarm to users, as well as to the security company's CMS. In Control mode, Button allows you to control Ajax automation devices with a short or long press of a button.

In panic mode, the Button can act as a panic button and signal about a threat, or inform about an intrusion, as well as a fire, gas or medical alarm. You can choose the type of alarm in the button settings. The text of alarm notifications depends on the selected type, as well as the event codes transmitted to the central monitoring station of the security company (CMS).

You can bind the action of an automation device (Relay, WallSwitch or Socket) to a button (press in the Button settings — Scenarios menu).

The Button is equipped with protection against accidental press and transmits alarms at a distance of up to 1,300 m from the hub. Please be aware that the presence of any obstructions that impede the signal (for example, walls or doors) will reduce this distance.

Button is easy to carry around. You can always keep it on a wrist or a necklace. The device is resistant to dust and splashes.

When connecting Button via radio signal range extender, note that Button does not automatically switch between the radio networks of the radio signal extender and the hub. You can assign Button to another hub or range extender manually in the app.

Connecting the Button to the Ajax Security System

Prior to initiating connection:

1. Follow the hub instructions to install the Ajax application.
Create an account, add a hub to the app, and create at least one room.
2. Enter the Ajax app.
3. Activate the hub and check your internet connection.
4. Ensure that the hub is not in armed mode and is not being updated by checking its status in the app.

Only users with administrative rights can add a device to the hub.

In order to connect a Button:

1. Click on Add Device in the Ajax app.
2. Name the device, scan its QR code (located on the package) or enter it manually, select a room and a group (if group mode is enabled).
3. Click Add and the countdown will begin.
4. Hold the button for 7 seconds. When the Button is added, the LEDs will flash green once.

For detection and pairing, the Button must be located within the hub radio communication zone (on the single protected object). The connected button will appear in the list of hub devices in the application. Updating the statuses of the device in the list does not depend on the polling time value in the hub settings. Data is updated only by pressing the Button.

Button is a wireless panic button with protection against accidental press and additional mode to control automation devices.

Button is connected to the security system and configured via Ajax apps on iOS, Android, macOS, and Windows. The users are alerted of all alarms and events via push notifications, SMS, and phone calls (if enabled).

States

Button statuses can be viewed in the device menu:

1. Ajax app → **Devices**  → **Button** → **Settings** 

Parameter	Value
Battery Charge	<p>Battery level of the device. Two states available:</p> <ul style="list-style-type: none"> • OK • Battery discharged <p>How battery charge is displayed in Ajax apps</p>
Operating mode	<p>Displays the operating mode of the button. Three modes are available:</p> <ul style="list-style-type: none"> • Panic • Control

	Mute Interconnected Fire Detectors Alarm
LED Brightness	<p>Displays current brightness level of indicator light:</p> <ul style="list-style-type: none"> • Disabled (no display) • Low • Max
Protection against accidental activation	<p>Displays the selected type of protection against accidental activation:</p> <ul style="list-style-type: none"> • Off — protection disabled. • Long press — in order to send alarm you should hold the button down for more than 1.5 seconds. • Double-pressing — in order to send alarm you should double-press on the button with a pause of no more than 0.5 seconds.
ReX	Displays the status of using a radio signal range extender
Temporary Deactivation	Displays the status of the device: active or completely disabled by the user
Firmware	Button firmware version
ID	Device ID

Configuration

You can adjust the device parameters in the settings section:

1. Ajax app → **Devices**  → **Button** → **Settings** 

Parameter	Value
First field	Name of the device, can be changed
Room	The choice of the virtual room that the device is assigned to

Operating mode	<p>Displays the operating mode of the button. Three modes are available:</p> <ul style="list-style-type: none"> • Panic — sends an alarm when pressed • Control — controls automation devices by short or long (2 sec) pressing • Mute Interconnected Fire Detectors Alarm — when pressed, mutes the fire alarm of FireProtect/Fire Protect Plus detectors. The option is available if Interconnected Fire Detectors Alarm feature is enabled <p>Learn more</p>
Alarm type (available only in panic mode)	<p>Selection of the Button alarm type:</p> <ul style="list-style-type: none"> • Intrusion • Fire • Medical • Panic button • Gas <p>The text of SMS and notifications in the application depend on the selected type of alarm</p>
LED Brightness	<p>This displays the current brightness of the indicator lights:</p> <ul style="list-style-type: none"> • Disabled (no display) Low • Max
Accidental press protection (available only in panic mode)	<p>Displays the selected type of protection against accidental activation:</p> <ul style="list-style-type: none"> • Off — protection disabled. • Long press — in order to send alarm you should hold the button down for more than 1.5 seconds. • Double press — in order to send alarm you should double-press on the button with a pause of no more than 0.5 seconds.

Alert with a siren if panic button is pressed	If active, sirens added to the system are activated after panic button pressing
Scenarios	Opens the menu for creating and configuring scenarios
User Guide	Opens the Button user guide
Temporary Deactivation	Allows a user to deactivate the device without deleting it from the system. The device will not execute system commands and participate in automation scenarios. The panic button of a deactivated device is disabled Learn more about device temporary deactivation
Unpair Device	Disconnects Button from the hub and deletes its settings

Operating indication

Button status is indicated with red or green LED indicators.

Category	Indication	Event
Linking to security system	Green LEDs flash 6 times	The button is not registered in any security system
	Lights up green for a few seconds	Adding a button to the security system
Command delivery indication	Lights up green briefly	Command is delivered to security system
	Lights up red briefly	Command is not delivered to security system
Long press indication in Control mode	Blinks green briefly	Button recognized the pressing as a long press and sent the corresponding command to the hub

Feedback Indication (follows the Command Delivery Indication)	Lights up green for about half a second after the command delivery indication	The security system has received and performed the command
	Briefly lights up red after the command delivery indication	The security system did not perform the command
Battery status (follows Feedback Indication)	After the main indication it lights up red and goes out smoothly	Button battery needs to be replaced. At the same time, button commands are delivered to the security system Battery Replacement

Use cases

Panic Mode

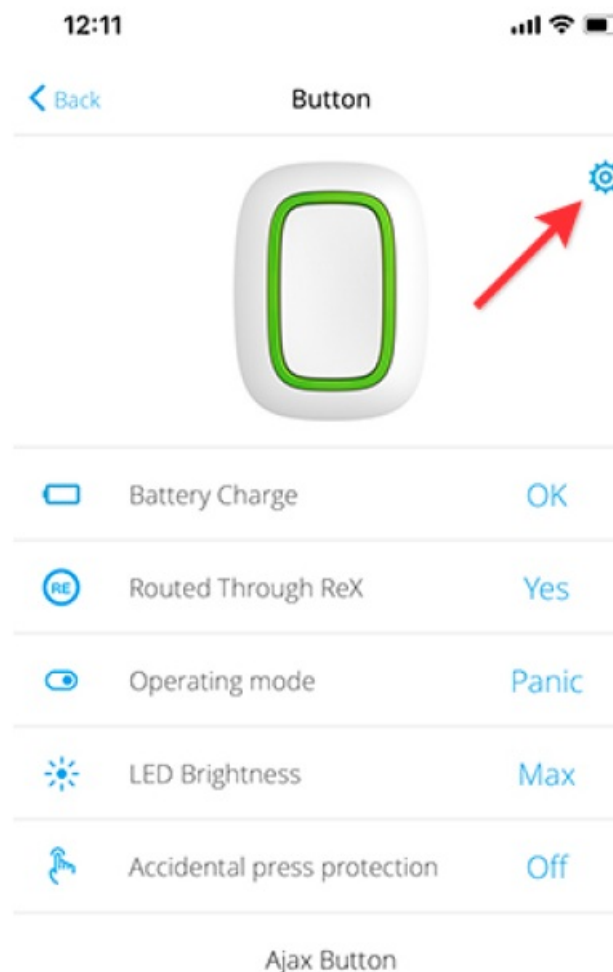
As a panic button, the Button is used to call for security company or help, as well as for emergency notification through the app or sirens. Button support 5 types of alarms: intrusion, fire, medical, gas leak, and panic button. You can choose the type of alarm in the device settings. The text of alarm notifications depends on the selected type, as well as the event codes transmitted to the central monitoring station of the security company (CMS). Consider, that in this mode, pressing the Button will raise an alarm regardless of security mode of the system. Button can be installed on a flat surface or carried around. To install on a flat surface (for example, under the table), secure the Button with double-sided adhesive tape. To carry the Button on the strap: attach the strap to the Button using the mounting hole in the main body of the Button.

Control Mode

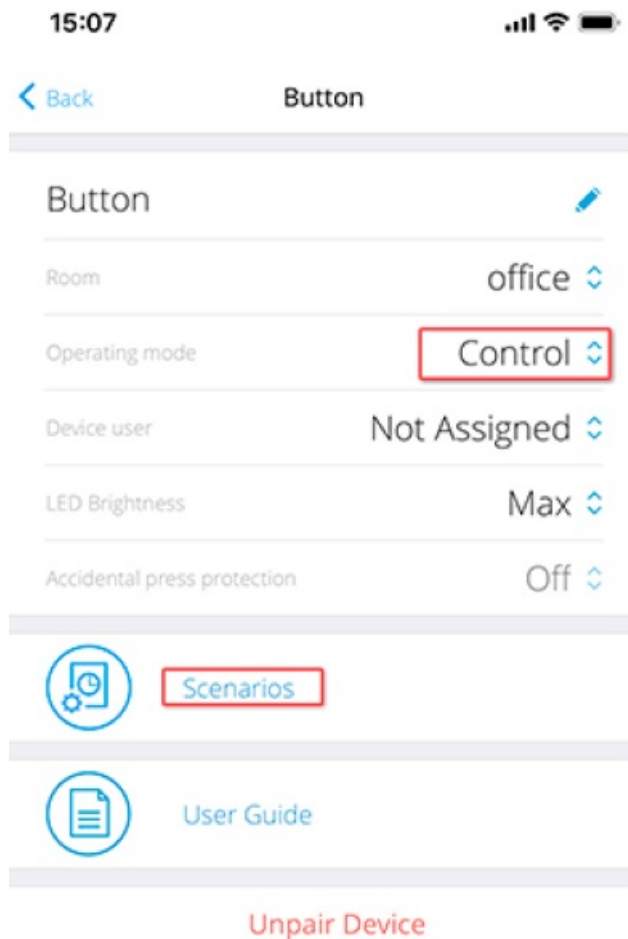
In the Control mode, the Button has two pressing options: short and long (the button is pressed for more than 3 seconds). These pressings can trigger the execution of an action by one or more automation devices: Relay, WallSwitch, or Socket.

To bind an automation device action to a long or short press of a Button:

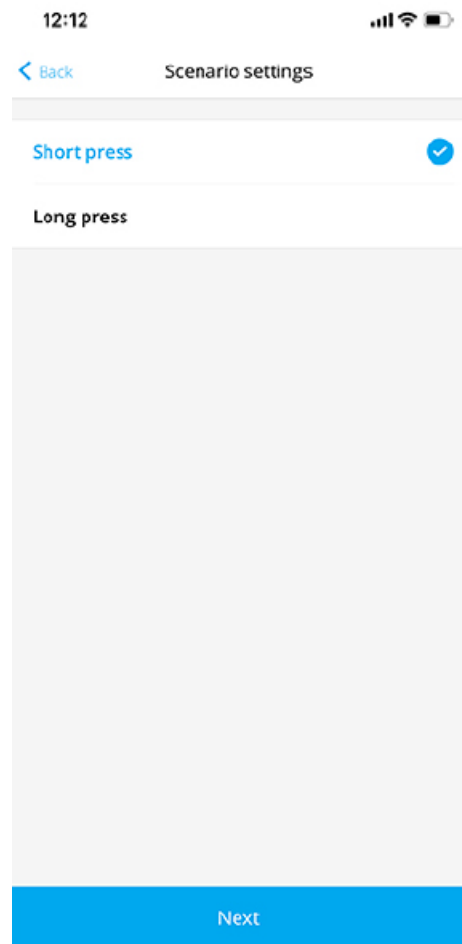
1. Open the Ajax app and go to the Devices tab.
2. Select Button in the list of devices and go to settings by clicking the gear icon



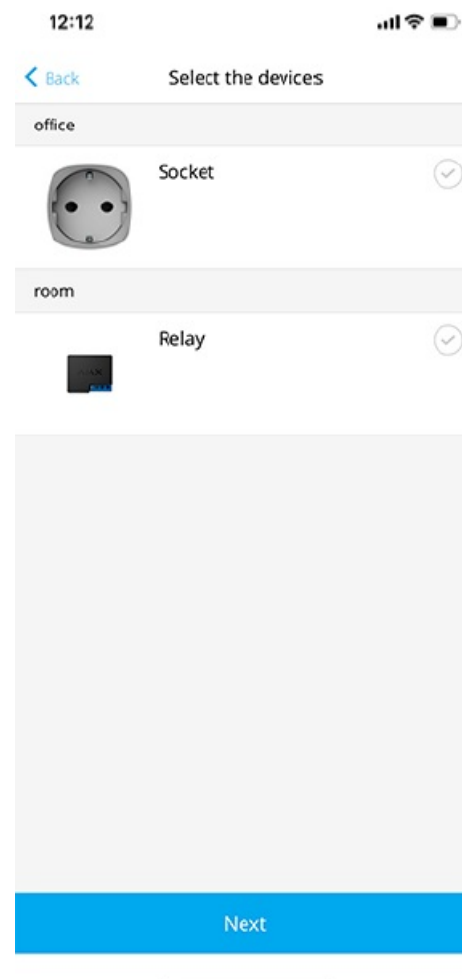
3. Select the Control mode in the Button mode section.



4. Click the Button to save the changes.
5. Go to the Scenarios menu and click Create scenario if you are creating a scenario for the first time, or Add scenario if scenarios have already been created in the security system.
6. Select a pressing option to run the scenario: Short press or Long press.



7. Select the automation device to execute the action.



8. Enter the Scenario Name and specify the Device Action to be executed by pressing the Button.

- Switch on
- Switch off
- Switch the state

14:46

< Back Scenario settings

Type the scenario name

DEVICE ACTION

Switch on ✓

Switch off

Switch the state

Set which action the device to perform: switch on/off, or switch contacts state to the opposite.

Save

When configuring a scenario for Relay, which is in pulse mode, the Device Action setting is not available. During the scenario execution, this relay will close/open the contacts for a set time. The operating mode and pulse duration are set in the Relay settings.

9. Click Save. The scenario will appear in the list of device scenarios.

Mute Interconnected Fire Detectors Alarm

By pressing the Button, the interconnected fire detectors alarm can be muted (if the corresponding operating mode of the button is selected). The reaction of the system to pressing a button depends on the state of the system:

- The Interconnected Fire Detectors Alarm have already propagated — by the first press of the Button, all fire detectors sirens are muted, except for those that registered the alarm. Pressing the button again mutes the remaining detectors.
- The interconnected alarms delay time lasts — the siren of the triggered FireProtect/FireProtect Plus detector is muted by pressing.

Learn more about Interconnected Fire Detectors Alarms

With the OS Malevich 2.12 update, users can mute fire alarms in their groups without affecting detectors in the

groups to which they do not have access.

Placement

Button can be fixed on a surface or carried around.

How to x Button

To fix Button on a surface (e. g. under a table), use Holder.

To install the button in the holder:

1. Choose a location to install the holder.
2. Press the button to test whether the commands can reach the hub. If not, choose another location or use a radio signal range extender.

When connecting Button via radio signal range extender, note that Button does not automatically switch between the radio networks of the radio signal extender and the hub. You can assign Button to another hub or range extender manually in the app.

3. Fix Holder on the surface using the bundled screws or double-sided adhesive tape.
4. Put Button into the holder.

Please note that Holder is sold separately.

[Buy Holder](#)

How to carry around Button

The button is convenient to carry with you thanks to a special hole on its body. It can be worn on the wrist or around the neck, or hung on a key ring.

Button has an IP55 protection rating. This means that the device body is protected from dust and splashes. Tight buttons are recessed into the body and software protection helps to avoid accidental pressing.

Maintenance

When cleaning the key fob body, use cleaners that are suitable for technical maintenance.

Never use substances containing alcohol, acetone, gasoline and other active solvents to clean the Button.

The pre-installed battery provides up to 5 years of key fob operation in normal use (one press per day). More frequent use may reduce battery life. You can check battery level at any time in the Ajax app.

Keep new and used batteries away from children. Do not ingest battery, Chemical Burn Hazard.

The pre-installed battery is sensitive to low temperatures and if the key fob is cooled significantly, the battery level indicator in the app may show incorrect values until the key fob becomes warmer.

The battery level value is not updated on a regular basis, but only updates after pressing the button.

When the battery has run down, the user will receive a notification in the Ajax app, and the LED will steadily light up red and go out each time the button is pressed.

How long Ajax devices operate on batteries, and what affects this

[Battery Replacement](#)

Technical Specifications

Number of buttons	1
LED backlight indicating command delivery	Available
Protection against accidental activation	Available, in panic mode
Radio communication protocol	Jeweller Learn more
Radio frequency band	866.0 – 866.5 MHz 868.0 – 868.6 MHz

	868.7 – 869.2 MHz 905.0 – 926.5 MHz 915.85 – 926.5 MHz 921.0 – 922.0 MHz Depends on the region of sale.
Compatibility	Operates with all Ajax hubs, and radio signal range extenders featuring OS Malevich 2.7.102 and later
Maximum radio signal power	Up to 20 mW
Radio signal modulation	GFSK
Radio signal range	Up to 1,300 m (without obstacles)
Power supply	1 CR2032 battery, 3 V
Battery life	Up to 5 years (depending on frequency of use)
Protection class	IP55
Operating temperature range	From -10°C to +40°C
Operating humidity	Up to 75%
Dimensions	47 × 35 × 13 mm
Weight	16 g
Service life	10 years

Compliance with standards

Complete Set

1. Button
2. Pre-installed CR2032 battery
3. Double-sided tape
4. Quick Start Guide

Warranty


The warranty for the products manufactured by the AJAX SYSTEMS MANUFACTURING limited liability company is valid for 2 years after purchase and does not extend to the bundled battery.

If the device does not function properly, we recommend that you first contact the support service as technical issues can be resolved remotely in half of the cases!

Warranty obligations

User agreement

Documents / Resources

	AJAX Smart Button Wireless Panic [pdf] User Manual Smart Button Wireless Panic, Smart, Button Wireless Panic, Wireless Panic, Panic
---	--

References

- [OS Malevich 2.12: Full control over the hub communication and even more features for Ajax sirens | Ajax Systems Blog](#)
- [End user agreement - Ajax Systems](#)
- [Current product lines of the Ajax security system](#)
- [Current product lines of the Ajax security system](#)
- [Wireless panic button with control mode | Ajax Systems](#)
- [Holder for Button/DoubleButton — Bracket for panic button](#)
- [Security system control panels | Ajax Systems](#)
- [ocBridge Plus — Module for Ajax devices integration with wired systems](#)
- [Signal range extenders in the security system | Ajax Systems](#)
- [Relay — Low current remote control relay with dry contact](#)
- [Socket \(type F\) — Wireless smart plug with energy monitor](#)
- [uartBridge — Module for Ajax devices integration with third-party wireless alarms systems](#)
- [Ajax WallSwitch — Wireless power relay with energy monitor](#)
- [Software | Ajax Systems](#)
- [Ajax devices standards compliance list](#)
- [Warranty - Ajax Systems](#)
- [Automation | Ajax Systems Support](#)
- [How battery charge is displayed in Ajax apps | Ajax Systems Support](#)
- [How long Ajax devices operate on batteries, and what affects this | Ajax Systems Support](#)
- [How to deactivate a device without removing it from the system | Ajax Systems Support](#)
- [How to replace a battery of the Button | Ajax Systems Support](#)
- [Jeweller radio protocol: technology and capabilities | Ajax Systems Support](#)
- [Relay User manual | Ajax Systems Support](#)
- [How to create and configure a scenario in the Ajax system | Ajax Systems Support](#)
- [What a residential fire alarm system is and how It works | Ajax Systems Support](#)
- [What is Interconnected Fire Detectors Alarm and how does it work | Ajax Systems Support](#)