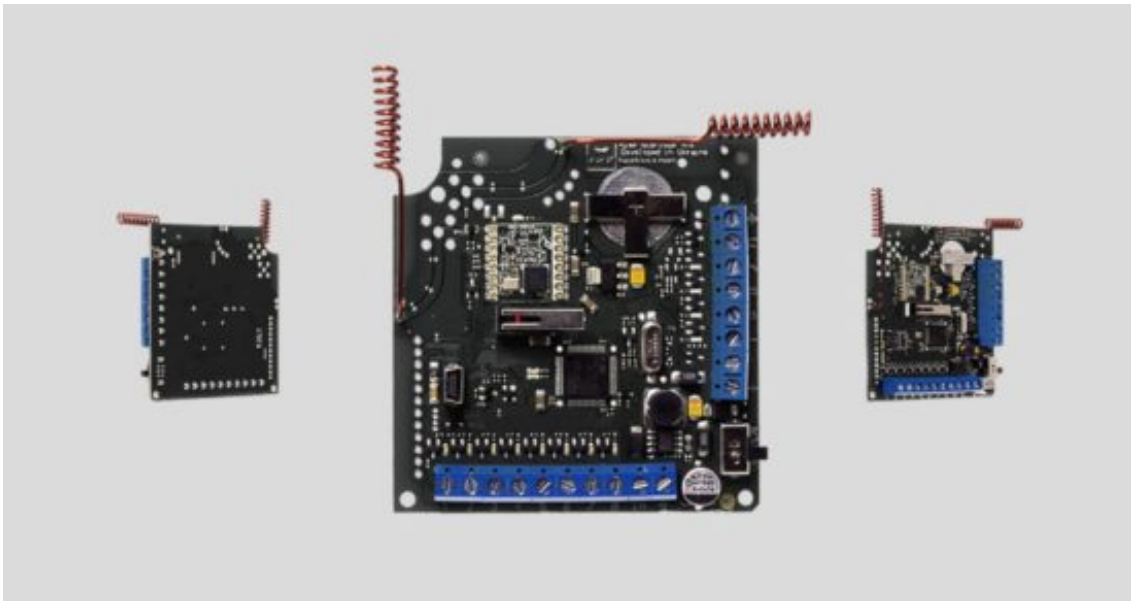


AJAX ocBridge Plus Wireless Sensors Receiver User Manual

[Home](#) » [ajax](#) » AJAX ocBridge Plus Wireless Sensors Receiver User Manual 

ocBridge Plus
User Manual
Updated March 6, 2021



Wireless sensors' receiver **ocBridge Plus** is designated for connecting compatible Ajax devices to any third party wired central unit (panel) with a help of NC/NO contacts. Ajax system has two-way connection with the sensors which enables it's functioning in two modes: active mode and passive mode.

When the system is in passive mode, wireless sensors switch to power-saving mode, which makes it possible to extend signiy life.



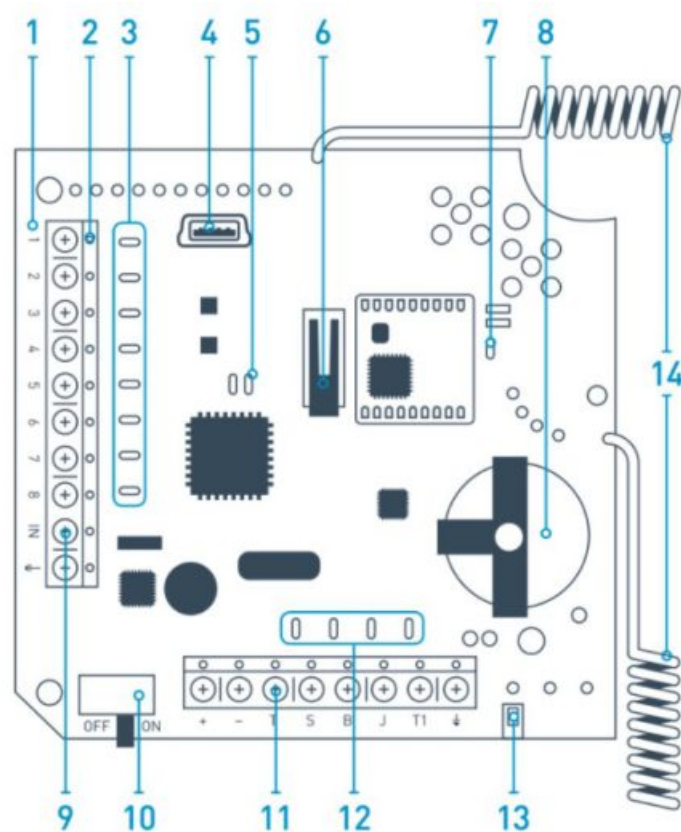
If the receiver ocBridge Plus is connected to the wire central unit, the digital input «IN» (wire input) **MUST** have connection with relay output or transistor output from the central unit, and this output must be inverted when the central unit is being armed or disarmed. Detailed description of connection to the central unit described in Managing the central unit.

Buy ocBridge Plus

Contents

- 1 Functional Elements
- 2 Sensors' handling
- 3 Using conation software
- 4 Managing the central unit
- 5 Firmware upgrade
- 6 Conation transfer
- 7 Maintenance
- 8 Specification
- 9 Components
- 10 Warranty
- 11 Documents / Resources
 - 11.1 References
- 12 Related Posts

Functional Elements



Picture 1. ocBridge Plus wireless sensors receiver

- 1. — ocBridge Plus main board
- 2. — terminal strip for connection to the main zones of the central unit
- 3. — 8 red lights indicators of the main zones
- 4. — mini USB connector
- 5. — red and green light indicators (consult the table for the description)
- 6. — «opening» tamper button
- 7. — green power supply indicator
- 8. — battery for backup saving

9. — IN digital input
10. — power supply switch
11. — terminal strip for connection to the central unit service zones
12. — 4 green indicators of the service zones
13. — «breakdown» tamper button (on the reverse of the main board)
14. — antennas

Sensors' handling

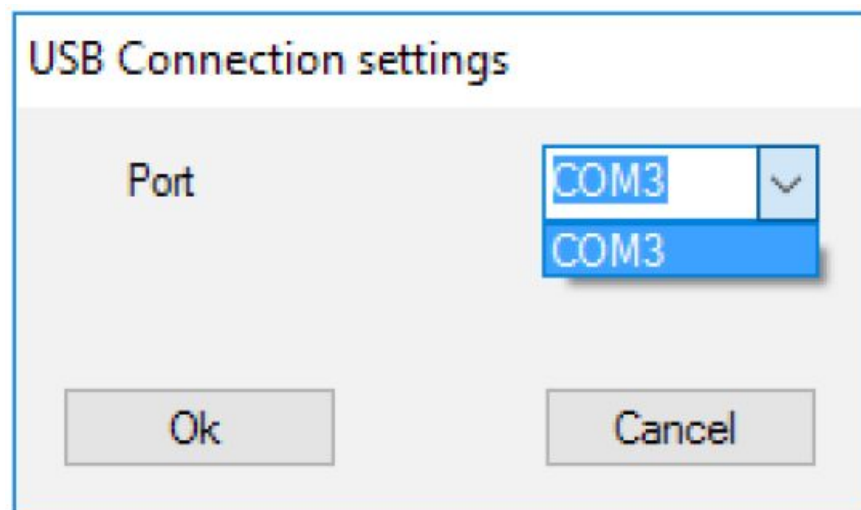
1. Connect the ocBridge Plus to the computer with a help of USB cable (type A– miniUSB) through connector «4» (Picture 1). Turn on the receiver with the switch «10» (Picture 1).

If it is the vice and install the software drivers. If the drivers were not installed automatically, you will have to install the driver-program **vcpdriver_v1.3.1** manually. There are different versions of this program for x86 and x64 Windows platforms.

In the archive **vcpdriver_v1.3.1_setup.zip** on CD you can **VCP_V1.3.1_Setup.exe** for 32-bit Windows operating systems and **VCP_V1.3.1_Setup_x64.exe** — for 64-bit Windows operating systems on the CD. Please note that if you initially install an unsuitable driver and then install the correct one over it, ocBridge Plus will not work with the PC's conator program!

If the wrong driver was installed, at y to uninstall it (through Windows programs uninstall), then reboot the computer and install the necessary software driver. Also, **.NET Framework 4** (or newer version) should be installed. After drivers installation, launch the program «**Ajax ocBridge Plus conator**».

Consults **Using conation software** of this manual provides the details about the program «Ajax ocBridge Plus conator» functioning. In the program settings in «Ajax ocBridge Plus conator» settings (menu «**Connection**» — «**Setting**»), select COM port that is chosen by the system for the receiver (Picture 2), click «**OK**» and then the «**Connect**» button. «Ajax ocBridge Plus conator» is ready to work with the ocBridge Plus receiver.

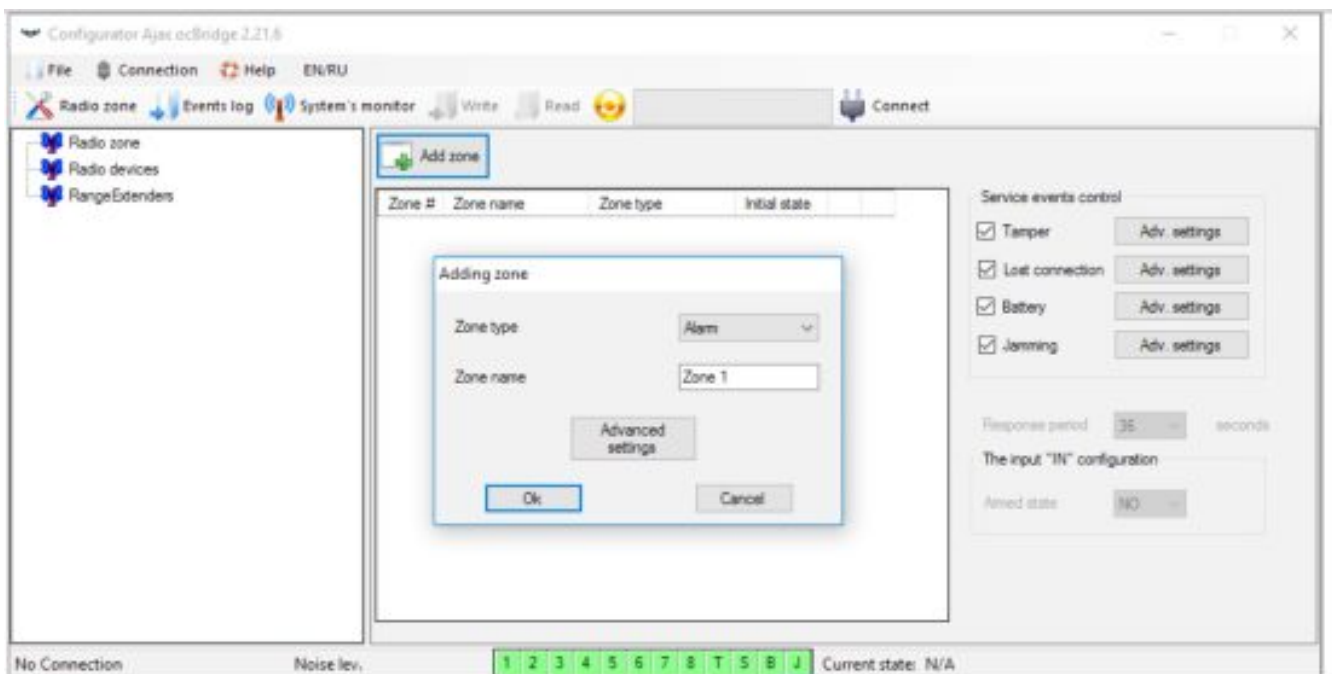


Picture 2 Selecting the COM port for connecting the receiver to the computer

Light «5» (Picture 1) indication description:

Indication	Description
Green light is permanent, red light does not blink	ocBridge Plus is in configuration mode. In configuration, there are Pages “ Radio zones ” or « Events memory » are opened. During this period, the sensors do not receive the responses to the alarm signals and statuses
Green — blinks once per second (before, the green light was permanent), and the red — blinks during 30 seconds	New radio set unit detection mode is on
The red blinks momentarily	A moment when the ocBridge Plus receiver registers a new device
The green — blinks for 10 minutes and the red is permanent; no red light	Searching for all devices after the previously saved PC configuration is downloaded, system is armed; system is disarmed
No green and red light	The receiver is in the operating mode, the system is disarmed
Permanent red light	The receiver is in operating mode, the system is armed
Permanent green light, the red light is blinking very fast	Radio signal is tested in order to connect sensor or other device
Green light blinks momentarily	New detectors' polling period started, 36 seconds by default
Red/green- blinks momentarily	Failure is detected

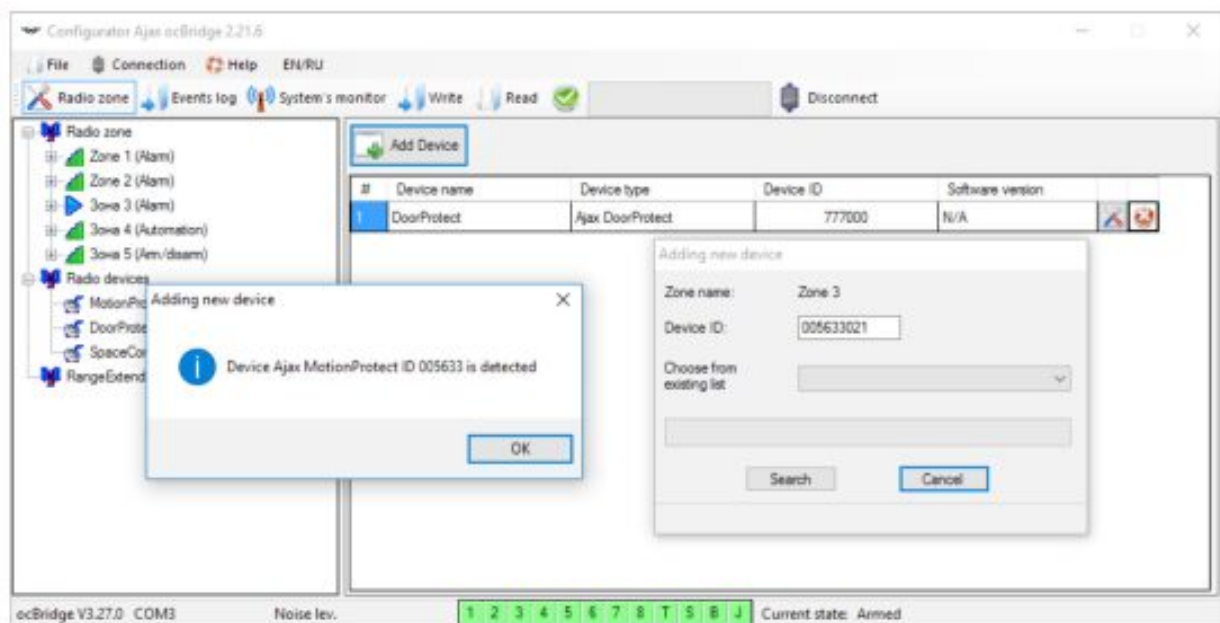
- All devices that you want to connect to the ocBridge Plus must be registered with a help of «**Ajax ocBridge Plus conator**». In order to register the sensors, it is necessary to create radio zones in the conator in case of it had not been done before. To do this select the “**Radio zone**” and click «**Add zone**» button (Picture 3).



Picture 3. Adding a zone

Then, appropriate “Zone type” and settings is to be selected (consult Managing the central unit of the present manual). To add a device chose necessary zone and click “Add a device” button. Then, a “Adding new device” window appears and it is necessary enter sensor’s identi then click the “Search” button (Picture 4).

When the search indicator bar begins to move, it is necessary to turn on the sensor. The registration request is sent only when the sensor is being switched on! In case of the registration fail, turn off the sensor for 5 seconds and then turn it on again. If the sensor is on and its light blinks once per second during one minute, it means that the sensor is not registered! The light blinks in the same way if the sensor is deleted from the ocBridge!



Picture 4. Device registration window

3. If the sensor was mistakenly registered in a wrong zone, click on its “Properties” button. The settings window will appear permitting to select a new zone for the sensor (Picture 5). You can also open the detector properties menu by clicking the corresponding button opposite the detector in the general list of the “Radio devices” tree.

Picture 5. The sensor's properties' menu makes it possible to register the sensor in the zone

When an additional wire sensor is connected to the external digital input of the wireless sensor, in the properties activate the checkbox "Additional input" (Picture 5). If a sensor (for example, a LeaksProtect) is designed for working 24 h, activate in the checkbox properties "24 h active". 24 h sensors and normal sensors should not be placed in the same zone! If necessary, adjust the sensor's sensitivity.

4. When the sensors are successfully registered in the security system, click the button "Write" (Picture 4) to save sensors' conation data in the ocBridge Plus receiver's memory. When ocBridge Plus connected to the PC, click the button "Read" (Picture 4) to read the pre-saved sensors' conation from the ocBridge Plus memory.



Make sure that installation location of sensor, has a stable radio contact with the ocBridge Plus receiver!

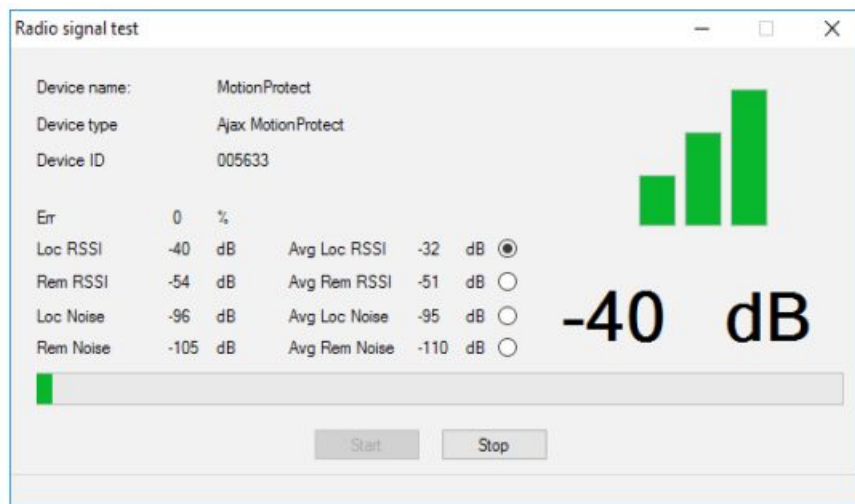
A maximum distance of 2000 m (6552 ft) between the sensor and the receiver is mentioned as a comparison with other devices. This distance was found is as a result of open area tests. Connection quality and distance between the sensor and the receiver can vary depending on installation location, walls, compartments, bridgings, as well as the thickness and constructional material. The signal loses a power passing through barriers. For example, distance between the detector and receiver that divided by two concrete walls is approximately 30 m (98.4 ft). Take into consideration, if you move the sensor even 10 cm (4 in), it is possible to improve signiadio signal between the sensor and the ocBridge Plus.

5. Select an appropriate place to install the sensors.

Please check the signal level of the connected devices! The radio signal test you can System's monitor" of the conation software. To start radio signal test press the button with antenna against the selected sensor (Picture 6) (only when the sensors are in the operating mode and there is no red light).

#	Device name	Device type	Zone #	Device ID	Software version	Signal level	Battery level	Temperature	Act. 24 h	Event
1	MotionProtect	Ajax MotionPro...	1	005633	MotionProtect 3.29.0	-31/10 dBm	3.2 V	26 °C	<input type="checkbox"/>	Movement detected


Picture 6. "System monitor" page



Picture 7. Signal level

The results of the test are shown in the conation software (Picture 7) as 3 indication bars, and by the sensor light. The test results can be the following:

Receiver	Sensor Light Emitting Diode	Description
3 indication bars	Lights permanently, with short breaks each 1.5 seconds	Excellent signal
2 indication bars	Blinks 5 times per second	Medium signal
1 indication bar	Blinks twice per second	Low signal
No bar	Short	No signal

 Please install the sensors in the places with the signal level of 3 or 2 bars. Otherwise, the sensor may function inconsistently.

6. The maximum number of devices that you can connect to the ocBridge Plus depends on the polling period.

Sensors' Quantity	Polling Period
100	36 seconds and more
79	24 seconds
39	12 seconds

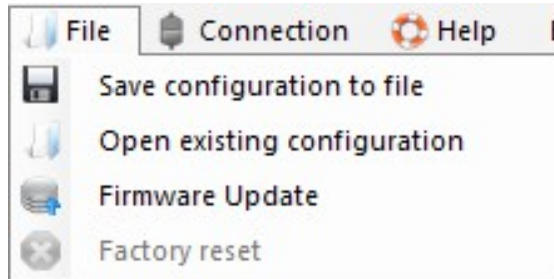
7. List of supported wireless detectors and devices:

- ◆ DoorProtect
- ◆ MotionProtect
- ◆ GlassProtect
- ◆ LeaksProtect
- ◆ FireProtect
- ◆ CombiProtect
- ◆ SpaceControl

Using conation software

1. “**File**” menu (Picture 8) allows to:

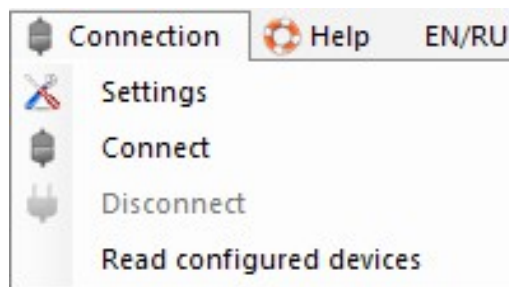
- ◆ save active conation of ocBridge Plus settings in file on PC (Save conations to file);
- ◆ upload to ocBridge Plus the settings’ conation saved on the computer (**Open the existing conation**);
- ◆ start the e upgrade (**Firmware update**);
- ◆ clear all settings (**Factory reset**). All the data and previously saved settings will be deleted!



Picture 8. “File” menu

2. “**Connection**” menu (Picture 9) allows to:

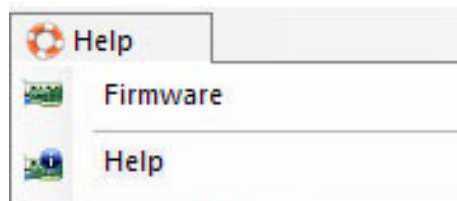
- ◆ select COM port for ocBridge Plus connection to the computer (Settings);
- ◆ connect the ocBridge Plus to the computer (Connection);
- ◆ disconnect ocBridge Plus from computer (Disconnection).



Picture 9. “Connection” menu

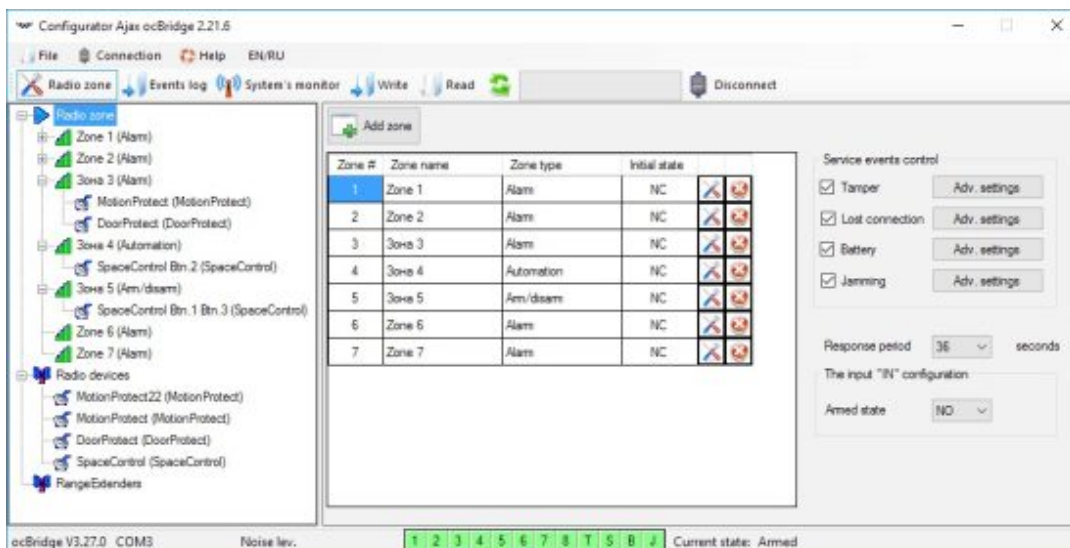
3. The “**Help**” menu (Picture 10) allows you to:

- ◆ find the information on the current software version.
- ◆ download the help



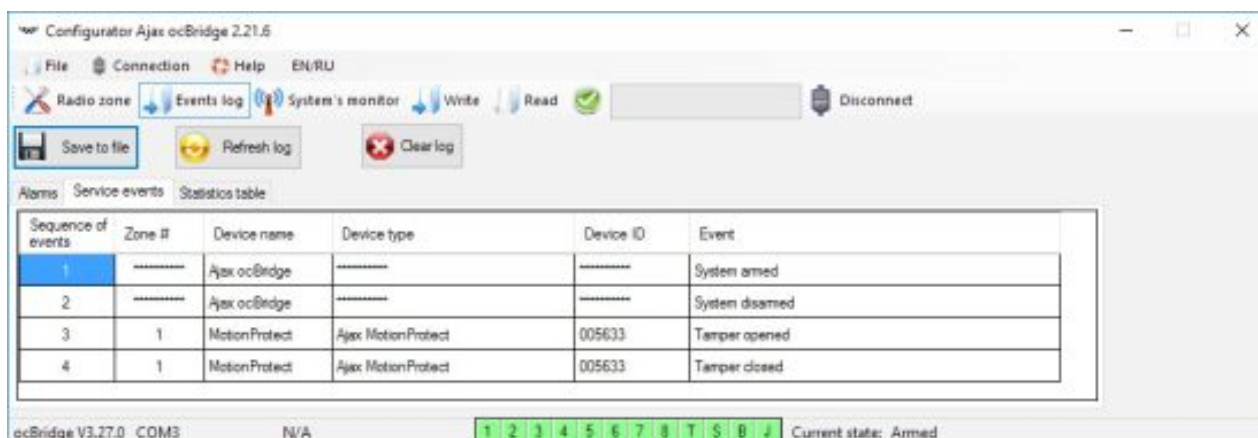
Picture. 10. “Help” menu

4. On page “**Radio zones**” (Picture 11) it is possible to create required the detection zones areas required and to add there sensors and devices (consult Sensors’ handling) and also to set the additional parameters of sensors’, devices’ and zones functioning (consults **Managing the central unit**).



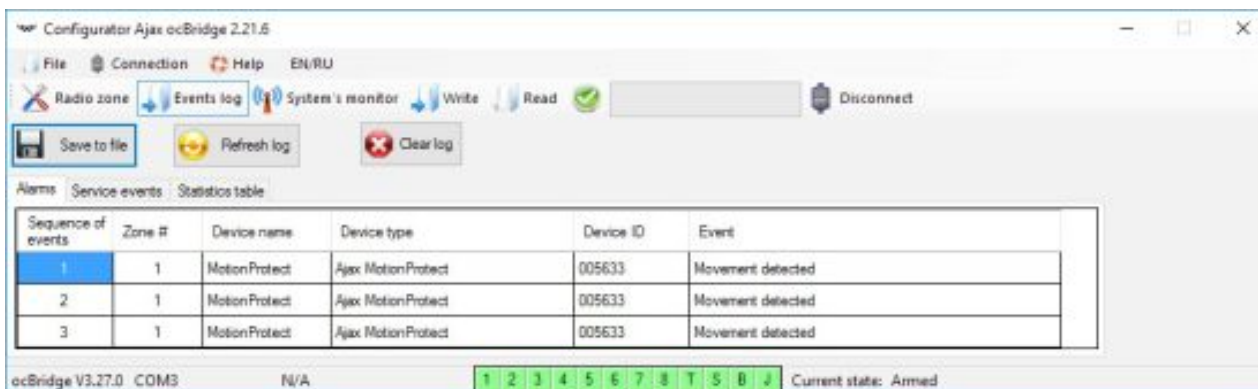
Picture 11. Radio zones

5. The buttons **“Write”** and **“Read”** are used for saving data in ocBridge memory and for reading current conation settings (**Sensors’ handling**).
6. **“Events memory”** page stores information about alarming events (Picture 12), service events (Picture 13) and statistics tables (Picture 14). It is possible to renew information in data logs or to clear them with **“Log reset”** button. The logs contains up to 50 alarming events and 50 service events. With the button **“Save in ”**, it is possible to save the events logs in xml format which can be opened with Excel.



Picture 12. Alarming events log

Events in all logs are displayed chronologically, starting from the ending with the last one. The event number 1 is the last event (the most recent event), the event number 50 is the oldest event.



Picture 13. Service eventlog

With the statistics table (Picture 14) it is easy to handle important data from each sensor: sensor’s location in specione and in general in the network; to observe the battery state in each sensor; to track the tamper buttons’ state in all sensors; to see which sensor generated the alarm and how many times; to estimate the signal stability according to data on signal failures. In the same data chart, there the service data is displayed –

sensor's name, device type, its ID, zone number / zone name.



Picture 14. Statistics table

7. The page “System’s monitor” is designated for sensors’ state control and for tests of their radio connection. The sensor’s current state is de background lighting color (Picture 15):

- ◆ white background — the sensor is connected;
- ◆ gray background — the connected detector starts operation, ocBridge Plus waits for the detector to send its ansmits the current system settings in response to it;
- ◆ light-green lighting (during 1 second) is turning on when the status is received from the sensor;
- ◆ orange lighting (during 1 second) is on when the alarm signal is received from the sensor;
- ◆ yellow lighting — the sensor’s battery is low (only the battery level is illuminated);
- ◆ red lighting — the sensor is not connected, it is lost or not in working mode.

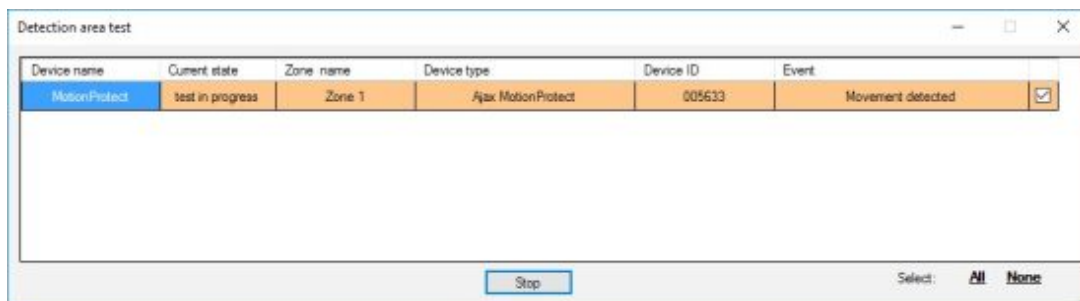


Picture 15. The connected sensors are entering to working mode

8. In the bottom of “System monitor” (Picture 16) the information is displayed about:

1. current connection to the computer;
2. background noise level;
3. alarm and service zones condition (active zones are highlighted);
4. current alarm system state (Activated/Deactivated);
5. countdown timer of the sensors’ current poling period.

9. The detection area test (Picture 16) is required to make sure that the sensors are working eent position. In testing mode the sensor light is on permanently, switching off for 1 second while activation – it is very easy to observe. In contrast to radio signal test, the detection area test for several sensors simultaneously is possible. For this, choose the check-box against each device in the window “Area detection test”, having opened previously the test window by pressing the button of magnifying glass against the selected sensor. The SpaceControl key fob does not support the detection area tests and radio signal tests.



Picture 16. Detection area test

Managing the central unit

1. It is necessary to install the ocBridge Plus near the alarm system central unit (panel). Do not install the receiver in the metal box, it will worsen considerably the radio signal receiving from the wireless sensors. If installation in the metal box is indispensable, it is necessary to connect an external antenna. On the ocBridge Plus board, there are pads for installing SMA-sockets for external antennas.



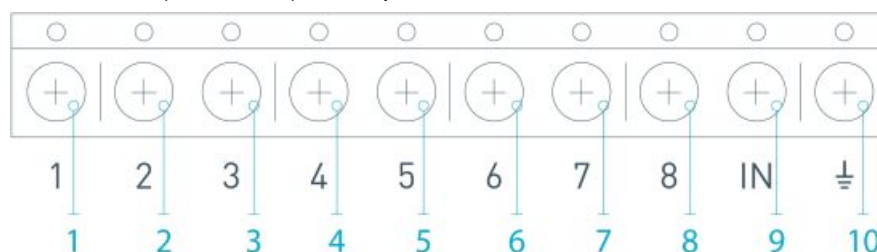
When connected to the central unit, the wires (especially the power wires) must not touch the antenna as they can worsen the connection quality. ocBridge Plus's radio antennas must be as far as possible from the alarm system GSM-module in case there is such a module.

2. With a help of ordinary wires, the receiver's outputs (PictureS 17, 18) are connected to the alarm system central unit inputs. Thus, the receiver's outputs are analogues of ordinary wire sensors for the central unit inputs. When the wireless sensor is activated, it sends the signal to ocBridge Plus. The ocBridge Plus receiver processes the signal and opens (by default, the output can be also set for closing) the wire output corresponding to the sensor. The alarm system's central unit reads the output opening as the sensor's zone opening and sends an alarm signal. If it is mentioned that the central unit zone must have high resistance between the receiver's output and the central unit zone, the resistor with nominal required by the central unit must be placed with serial connection.



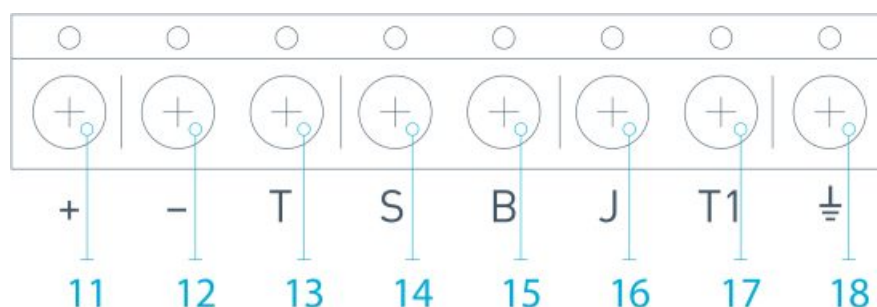
Observe the polarity while connecting the wires!

3. The outputs with numbers 1–8 (Picture 17) correspond to 8 main nominal alarm zones.



Picture 17. Main outputs and input "IN" of the receiver

Other 5 outputs of ocBridge Plus are service zones and correspond to the service inputs of the alarm system central unit.

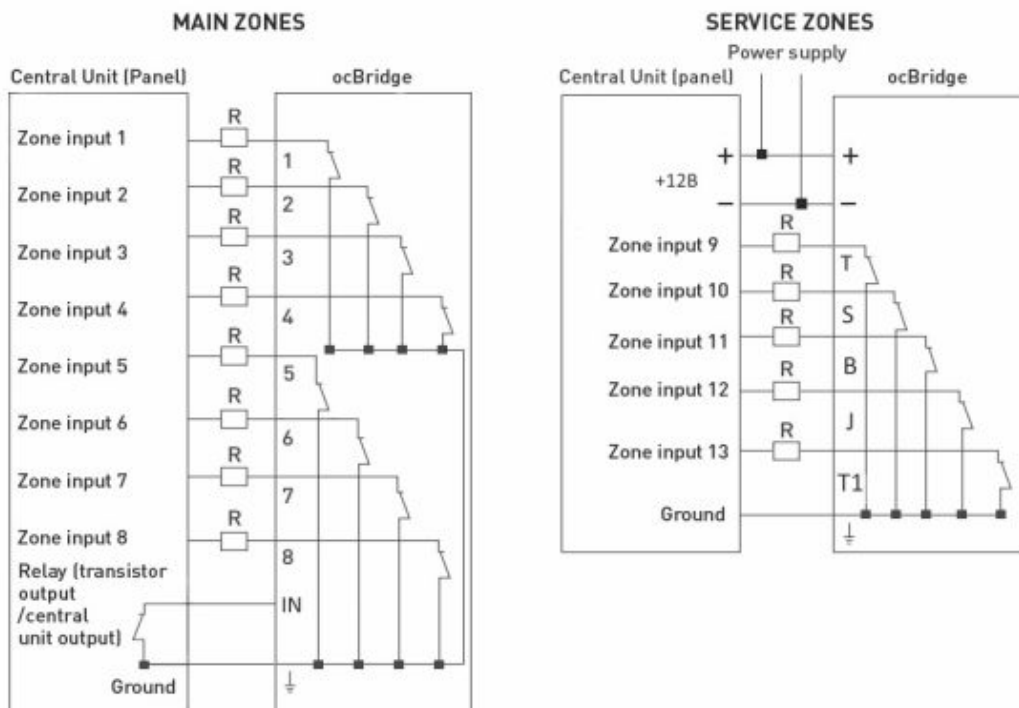


Picture 18. ocBridge Plus receiver's service outputs and power supply

The table provides the description for main and service zones' contacts:

Output №	Marking	Description
1	1	1st zone output
2	2	2nd zone output
3	3	3rd zone output
4	4	4th zone output
5	5	5th zone output
6	6	6th zone output
7	7	7th zone output
8	8	8th zone output
9 (Input)	IN	Wire input for connecting to the central unit output (for alarm system arming/disarming)
10		Ground for connection to the central unit
11	+	Power supply plus
12	–	Power supply minus
13	T	“Tamper” service output
14	S	“Connection failure” service output
15	B	“Battery” service output
16	J	“Jamming” service output
17	T1	“Tamper” service output
18		Ground for connection to the central unit

The receiver is connected to the central unit as explained by the scheme:



4. Zones are divided into 3 types: **alarm zones**, **automation zones** and **arm/disarm zones** (Picture 19). Zone type is selected when the zone is created, consult **Sensors' handling**.

Picture 19. Selecting zone type

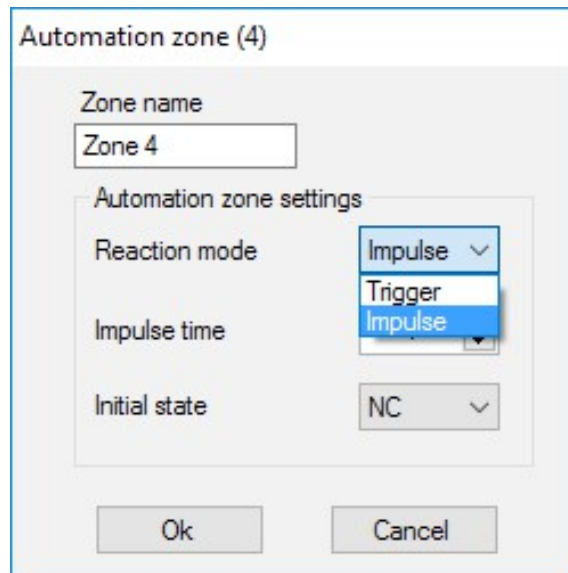
The alarm zone can be set (Picture 20) as NC (normally closed contacts) and as NO (normally opened contacts).

Picture 20. Alarm zone settings

The alarm zone reacts to bistable detectors (e.g. DoorProtect and LeaksProtect) with opening/closing,

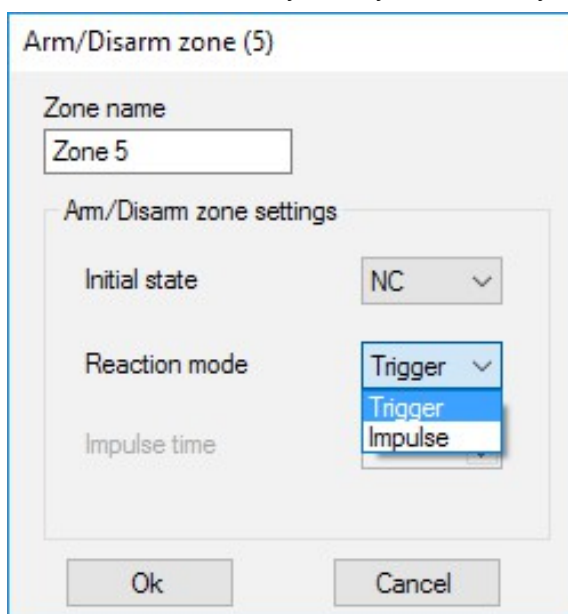
depending on setting “Initial state” (NC/NO). The zone is in alarm mode until the bistable detectors state returns to its initial state. The zone reacts to impulse sensors (e.g. MotionProtect, GlassProtect) with opening/closing depending on setting “Initial state” (NC/NO) with the impulse, its duration can be adjusted by the setting “Impulse time” (Picture 20). By default, the “Impulse time” is 1 second, 254 seconds maximum. If alarm is raised, the zone’s red light “3” is on (Picture 1).

Automation zone can be set as NC or NO (Picture 21). When the “Impulse” way to react is chosen, the zones reacts to all activations with opening/closing, depending on “Initial state” setting for the time set in the setting “Impulse time” — 1 second by default and 254 seconds maximum.



Picture 21. Automation zone settings

When the “Trigger” reaction mode is selected, the zone output changes its initial state to the opposite one with each new activation signal. The light indicates the automation zone’s current state – with the activation signal, a red light turns on or turns off if the normal state is restored. With the “Trigger” reaction mode, “Impulse time” parameter is unavailable. Arm/disarm zone is used only for key fobs and keyboards connection (Picture 22).



Picture 22. Arm/disarm zone settings

Arm/disarm zone can be set to initial state NC or NO. When the keyfob is registered, in arm/disarm zone two buttons are added simultaneously: button 1 — arming and button 3 — disarm. To arm, the zone reacts with closing/opening the output, depending on the setting “Initial state” (NC/NO). When this zone is activated, the red light corresponding to it turns on, and when it is deactivated, the light “3” (Picture 1) is off.



The activation/deactivation zone is set by default as trigger.

5. **The input “IN”** is designated for connecting transistor output or the central unit (panel) relay (Picture 1). If the “IN” input condition changes (Closing/Opening), the whole set of sensors connected to the receiver are set to “passive” mode (except for the sensors ticked as 24 h active), with the initial state restore — the sensors are set to “active”, and the red light is on.

In case several groups of sensors are used independently on the central unit, the ocBridge Plus is to be set to the “active” mode even if only one group of central unit is in armed mode. Only when all groups on central unit are deactivated, is possible to set the ocBridge Plus and sensors to “passive”. Use of “passive” mode of the sensors when system disarmed will signiove battery life of the sensors.



While connecting the key fob to the wireless sensors’ receiver ocBridge, be careful in connecting the keyfob to the zones! Please, don’t connect the keyfob to the zones with bistable sensors. Do not forget: the longer the polling period (Picture 22) of the sensors is (it varies from 12 to 300 seconds, 36 seconds set by default), the longer is wireless sensors’ battery life! At the same time it is suggested not to use a long polling period in secure systems for places where delay can be critical (for example, in institutions). When the polling period is too long, the time span of statuses sending from the sensors is increasing, which ine system’s reaction to service events (e.g. lost connection event). The system always reacts immediately to alarm events with any polling period.

6. **4 outputs (T, S, B, J)** correspond to service zones (Picture 18). Service zones are used for sending operation data to the central unit. Service outputs’ functioning is adjustable (Picture 23), they can be impulse of bistable ones. It is possible to switch off service outputs, in case they are not used in security system’s central unit (panel). To switch off untick the checkbox against an appropriate output’s name in conation software (Picture 22).

Service events control

<input checked="" type="checkbox"/> Tamper	Adv. settings
<input checked="" type="checkbox"/> Lost connection	Adv. settings
<input checked="" type="checkbox"/> Battery	Adv. settings
<input checked="" type="checkbox"/> Jamming	Adv. settings

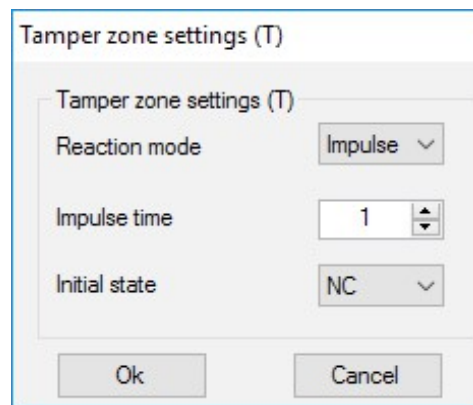
Response period seconds

The input "IN" configuration

Armed state

Picture 23. Service outputs setting menu on page “Radio zones”

If the “Impulse” mode is selected for reaction, the zone reacts to all activations by closing/opening the output depending on “Initial state” setting (NC/NO) for the time set in “Impulse time” option (Picture 24). By default, the impulse time is 1 second and the maximal value is 254 seconds.

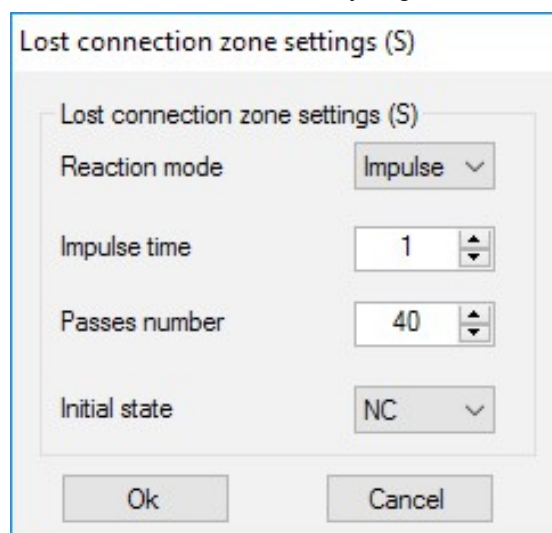


Picture 24. Service outputs' properties menu T, B, J

When **“Bistable”** mode is chosen for reaction, service zone reacts by closing/opening the output depending on “Initial state” setting (NC/NO) until the zones returns to the initial state. When the initial state is changed, green light “12” of the appropriate service zone (Picture 1) turns on.

Output T — “Tamper”: if one of the sensors is opened or separated from the assembling surface, its tamper button is activated and the sensor sends the alarm signal of opening/breaking.

Output S — “Lost connection”: if one of the sensors does not send the status signal during check time, the sensor changes the output condition S. Service zone S will activate after the period of time equal to the parameter “Polling period” multiplied by the parameter “Passes number” (Picture 25). By default, if ocBridge Plus does not receive 40 heartbeats from sensor successfully, it generates an “Lost connection” alarm.



Picture 25. Service output S properties menu

Output B — “Battery”. When the sensor the battery has run down, the sensor sends the signal about it. When the battery has run down, zone “B” does not function for a key fob SpaceControl, but the message about the battery running down can be found in service events log. On the keyfob, the discharged battery is shown by its light indication.

Output J — “Jamming”: in case it is found that the radio signal is being jammed, the receiver changes the output J condition. Indicator corresponding to the output J begins to light depending on the zone settings: the light is permanently on if the zone was de seconds specione was de

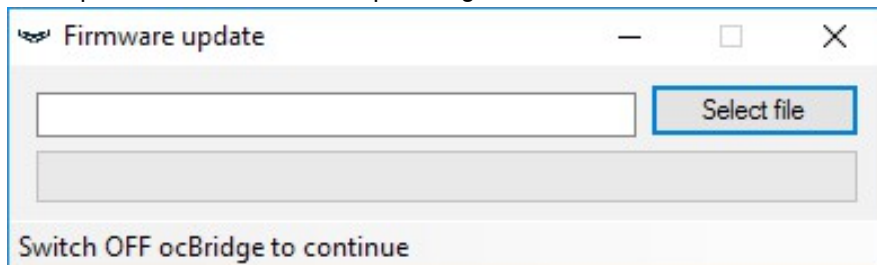
Output J — “Jamming”: in case it is found that the radio signal is being jammed, the receiver changes the output J condition. Indicator corresponding to the output J begins to light depending on the zone settings: the light is permanently on if the zone was defined as a bistable one; it turns on for the number of seconds specified (1-254 seconds) if the zone was defined as an impulse one.

7. **Output T1** is responsible for the ocBridge Plus’s tampers’ state. When the receiver is installed in the box, tamper buttons are pressed, the output is permanently closed. When at least one tamper unpressed, the

output is opening and the guard zone sends an alarm signal. It remains in alarm state until both tamper buttons are in normal state again and the output is closed.

Firmware upgrade

It is possible to upgrade ocBridge Plus's e. Download latest version of software from the site. Firmware is upgraded with a help of conation software. If the ocBridge Plus is connected to conation software, you should press "Disconnect" button without disconnecting the ocBridge Plus itself from PC. Then, in the menu "Connection", you should select a COM port where ocBridge Plus is connected. Then, it is necessary to select "Firmware upgrade" in drop-down menu and then, pressing the button "Select ", to show the o *.aff e (Picture 26).

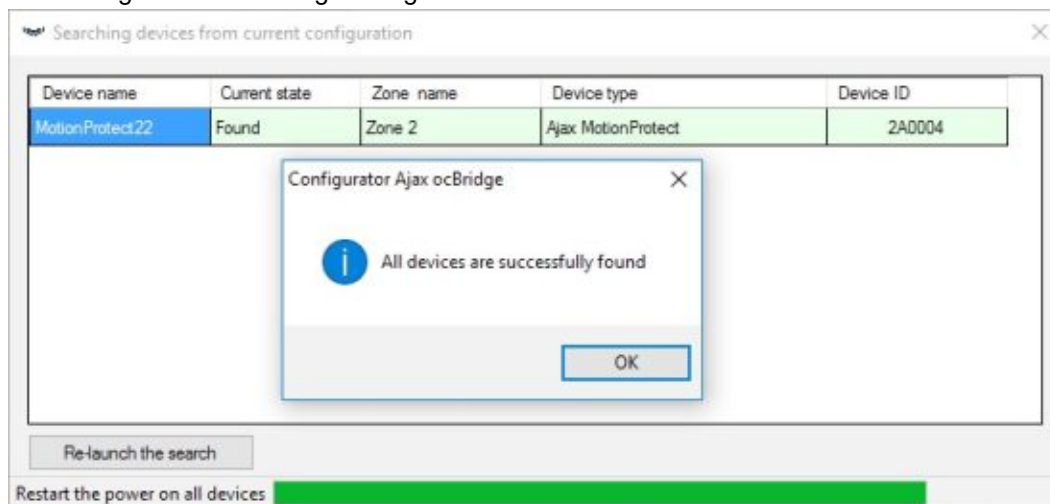


Picture 26. Firmware

Then, it is necessary to power the receiver off with switch "10" (Picture 1) and turn the device on again. After switching on, the upgrade process begins automatically. In case the process was accomplished successfully, there is a message "**Software upgrade is accomplished**" and the receiver is ready for work. If there is no message "Software upgrade is accomplished" or there were any failures during the software upgrade, you should upgrade the software again.

Conation transfer

It is possible to use the sensors' conation transfer to the other device ocBridge Plus without having to register the sensors again. For the transfer, it is necessary to save the current conation from "File" menu with "Save conation to " button (Picture 8). Then, it is necessary to disconnect the previous receiver and to connect a new one to the conator. Then, it is necessary to upload there a conation saved on the computer using the button "Open the existing conation" and then to press the button "Write down". After this, the window of sensors' search will appear (Picture 27) on ocBridge Plus and the green light indicator will blink for 10 minutes.



Picture 27. Saved conation devices search

In order to save the sensors in the memory of new receiver, it is necessary to switch off the power switch on all the sensors alternately, to wait for some seconds for the capacitor of the sensors to discharge, and then to turn the sensors on again. When the sensors' search is accomplished, the conation will be fully copied to new ocBridge. Switching off power supply of the sensors is necessary in order to prevent the security system sabotage. If while sensors' search you didn't reload all sensors, the sensors' search can be relaunched again in the menu "Connection" — "**Read coned devices**".

Maintenance

Once in 6 months, the receiver must be cleared of dust by aeration. The dust accumulated on the device can in certain conditions become current conductive and provoke the receiver's breakdown or interfere with its functioning.

Specification

Type	Wireless
Uses	Indoors
Effective radiated power	8.01 dBm / 6.32 mW (limit 25 mW)
Radio frequency band, modulation	868.0–868.6 MHz, GFSK
Maximum distance between wireless sensor and receiver ocBridge Plus	2000 m (open area) (6552 ft)
Maximum number of connected devices	100
Radio channel jamming detection	Available
Sensor eol	Available
Alerts and events logs	Available
External antenna connection	Available
Firmware update	Available
Tamper protection	Available (opening + detaching)
Number of wireless inputs/outputs	13 (8+4+1)/1
Power supply	USB (only for system setup); (digital input) +/-ground
Power supply voltage	DC 8 – 14 V; USB 5V (only for system setup)
Operation temperatures range	From -20°C to +50°C
Operation humidity	Up to 90%
Dimensions	95 × 92 × 18 mm (with antennas)

Components

1. Receiver for wireless detectors — 1 pcs
2. CR2032 battery — 1 pcs
3. User manual — 1 pcs
4. Packing — 1 pcs

Warranty

Warranty for the “AJAX SYSTEMS MANUFACTURING” LIMITED LIABILITY COMPANY products is valid for 2 years after the purchase and does not apply to the pre-installed battery. If the device does not work correctly, you should t service — in half of the cases, technical issues can be solved remotely!

The full text of the warranty
User Agreement

Technical support: support@ajax.systems

Documents / Resources

References

- [!\[\]\(4c660a3c4ce1da3313488b7854f55083_img.jpg\) End user agreement - Ajax Systems](#)
- [!\[\]\(f01c435bb39e3068a9b4895c9a993158_img.jpg\) ocBridge Plus — Module for Ajax devices integration with wired systems](#)
- [!\[\]\(c5f009707b314589d498a683120545c5_img.jpg\) Warranty - Ajax Systems](#)
- [!\[\]\(8b308e9f1e6682fd04ddef01495a93be_img.jpg\) CombiProtect User Manual | Ajax Systems Support](#)
- [!\[\]\(7a2466fab2a9c99ba33ed3fbd8b0c93f_img.jpg\) DoorProtect User Manual | Ajax Systems Support](#)
- [!\[\]\(f632f5613101834356c1771a91f82a1c_img.jpg\) FireProtect User Manual | Ajax Systems Support](#)
- [!\[\]\(1e76af9967ccdbc9d35eeb7f7c74a0bb_img.jpg\) GlassProtect User manual | Ajax Systems Support](#)
- [!\[\]\(13f95891d017add9bb2bd324d9543b27_img.jpg\) LeaksProtect User manual | Ajax Systems Support](#)
- [!\[\]\(63cc436de7726865a4fe5c59fc1020e2_img.jpg\) MotionProtect Jeweller User Manual | Ajax Systems Support](#)
- [!\[\]\(f4d81379fada60627f0dc1fa410d9772_img.jpg\) SpaceControl User Manual | Ajax Systems Support](#)