



# AJAX 5288 GlassProtect Small Wireless Detector User Manual

[Home](#) » [ajax](#) » **AJAX 5288 GlassProtect Small Wireless Detector User Manual** 

## Contents

- [1 AJAX 5288 GlassProtect Small Wireless Detector](#)
- [2 Functional elements](#)
- [3 Operating Principle](#)
- [4 Connecting to Third-Party Systems](#)
- [5 Settings](#)
- [6 Indication](#)
- [7 Installing the device](#)
- [8 Connecting a Wired Detector](#)
- [9 Maintenance](#)
- [10 Tech specs](#)
- [11 Documents / Resources](#)
  - [11.1 References](#)
- [12 Related Posts](#)

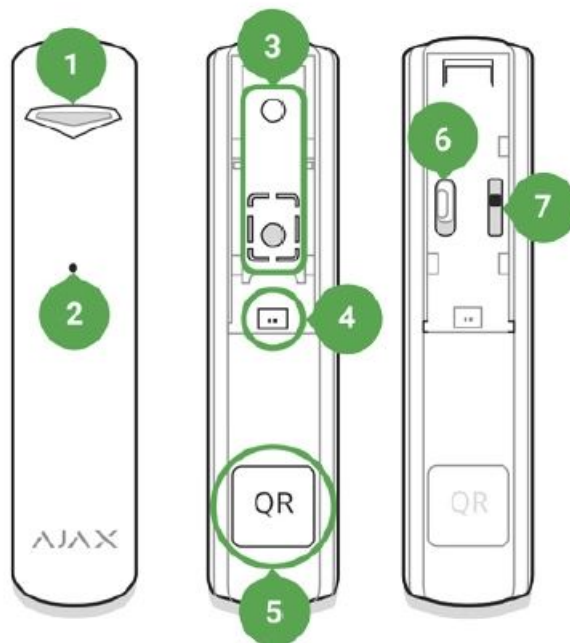


## AJAX 5288 GlassProtect Small Wireless Detector



GlassProtect is a wireless indoor glass break detector recognizing the sound of shattering the glass at a distance of up to 9 meters. GlassProtect can operate up to 7 years from a pre-installed battery and has a socket for connecting a third-party wired detector. GlassProtect connects to the Ajax security system via the protected Jeweller radio protocol. The communication range is up to 1,000 meters in line of sight. Also, GlassProtect can be connected to third-party security systems using the Ajax uartBridge or Ajax ocBridge Plus integration modules. Users can configure GlassProtect via the Ajax app for macOS, Windows, iOS, or Android. The system notifies users of all events through push notifications, SMS, and calls (if activated). The user can connect the Ajax security system to the central monitoring station of a security company.

### Functional elements



1. LED indicator
2. Microphone hole
3. SmartBracket attachment panel (perforated part is required for actuating the tamper in case of any attempt to dismantle the detector. Don't break it out!)
4. External detector connection socket
5. QR code

6. Device switch
7. Tamper button

## Operating Principle

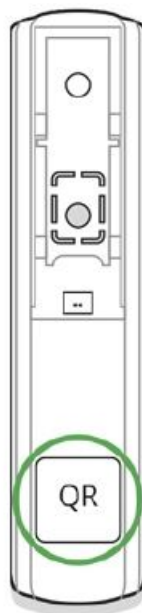
GlassProtect uses a sensitive electret microphone to detect the sound of glass breaking, consisting of a low-frequency hit sound and high-frequency crashing sound of glass shatters. Such two-stage glass break detection decreases the risk of false triggering.

## Connecting

1. Following the hub user guide, install the . Create the account, add the hub, and create at least one room.
2. Switch on the hub and check the internet connection (via Ethernet cable and/or GSM network).
3. Make sure that the hub is disarmed and does not update by checking its status in the Ajax app.

### Pairing the detector with hub:

1. Select Add Device in the Ajax app.
2. Name the device, scan or type the QR code (located on the detector body and packaging), and select the location room.



3. Tap Add — the countdown will start.
4. Switch on the device.



For detection and pairing to occur, the detector should be located within the coverage area of the wireless network of the hub (at a single protected object). The connection request is transmitted for a short time: at the moment of switching on the device. If the device failed to pair (LED blinks once per second), switch it off for 5 seconds and retry. The detector connected to the hub appears in the list of devices in the app. The update of the detector statuses in the list depends on the device ping interval set in the hub settings (the default value is 36 seconds).

## Connecting to Third-Party Systems

To connect the detector to a third-party central unit using the manual of the respective device.

### States

The states screen contains information about the device and its current parameters. Find the GlassProtect states in the Ajax app:

1. Go to the Devices tab.
2. Select GlassProtect from the list.

Parameter	Value
Temperature	<p>Temperature of the detector, measured on the process or and changes gradually.</p> <p>Acceptable error between the value in the app and temperature at the installation site: 2–4°C</p>
Jeweller Signal Strength	<p>Signal strength between the hub/range extender and the opening detector.</p> <p>We recommend installing the detector in places where the signal strength is 2–3 bars</p>
Connection	<p>Connection status between the hub/range extender and the detector:</p> <p><b>Online</b> — the detector is connected with the hub/range extender</p> <p><b>Offline</b> — the detector has lost connection with the hub/range extender</p>
ReX range extender name	<p><a href="#">Displays the status of using a radio signal range extender</a></p>
Battery Charge	<p>Battery level of the device. Displayed as a percentage</p>

## Settings

To change the detector settings in the Ajax app:

1. Select the hub if you have several of them or if you are using the PRO app.
2. Go to the Devices tab.
3. Select GlassProtect from the list.
4. Go to Settings by clicking on the .
5. Set the required parameters.
6. Click Back to save the new settings.

Setting	Value
First field	<p>Detector name that can be changed. The name is displayed in the text of SMS and notifications in the event feed.</p> <p>The name can contain up to 12 Cyrillic characters or up to 24 Latin characters</p>
Room	<p>Selecting the virtual room to which GlassProtect is assigned. The name of the room is displayed in the text of SMS and notifications in the event feed</p>
Delay When Entering, sec	<p>Selecting delay time when entering. Delay when entering (alarm activation delay) is the time you have to disarm the security system after entering the room.</p> <p><b>Functions for the connected wired detector only.</b></p> <p><a href="#">What is delay when entering</a></p>

### How to set Chime

Chime is a sound signal that indicates the triggering of the opening detectors when the system is disarmed. The feature is used, for example, in stores, to notify employees that someone has entered the building.

1. Go to the Devices menu.
2. Select the GlassProtect detector.
3. Go to its settings by clicking the gear icon in the upper right corner.
4. Go to the Chime Settings menu.
5. Select the siren notification for the event If external contact is open (available if the External contact option is enabled).
6. Select the chime sound (siren tone): 1 to 4 short beeps. Once selected, the Ajax app will play the sound.
7. Click Back to save the settings.
8. Set up the required siren.

### Indication

Event	Indication	Note
Turning on the detector	Lights up green for about one second	
Detector connection to the <a href="#">hub</a> , <a href="#">oc Bridge Plus</a> and <a href="#">uartBridge</a>	Lights up continuously for a few seconds	
Alarm / tamper activation	Lights up green for about one second	Alarm is sent once in 5 seconds
Battery needs replacing	During the alarm, it slowly lights up green and slowly goes out	Replacement of the detector battery is described in the <a href="#">Battery Replacement</a> manual

### Functionality testing

The Ajax security system allows conducting tests for checking the functionality of connected devices. The tests do not start immediately but within a period of 36 seconds when using standard settings. The test time start depends on the settings of the detector ping interval (the paragraph on “Jeweller” settings in hub settings).

### Detector functionality testing

Having dened the location of the detector and having xed the device with the bundled adhesive tape, test the detection zone.

### Testing the detector

Hit the glass with your st without breaking it. If the detector catches a low-frequency sound, the LED blinks. Simulate a high-frequency glass shattering sound for 1.5 seconds after the rst hit with a special tool or hitting a glass with a metal object. After recognizing the sound, the detector switches off the LED indicator for a second. To be triggered when the system is armed, the detector needs to recognize sounds in the following order: low-frequency sound (hit) rstly, then high-frequency sound (glass shattering, shAards). Otherwise, the alarm will not go off. Switch on/off all the appliances that usually operate in the room: generators, air conditioners, etc. If this triggers the detector, try to change the sensitivity or relocate GlassProtect. Use the sensitivity level, at which the detector correctly passes both test stages and does not respond to any devices operating in the room.

### Installing the device

In some cases, the household activity can cause false alarms. The location Aof GlassProtect depends on its remoteness from the hub, and obstacles hindering the radio signal transmission: walls, oors, large objects inside the room. The device developed only for indoor use. Check the Jeweller signal level at the installation location. If the signal level is low (one bar), we cannot guarantee the stable operation of the detector. Take all possible measures to improve the quality of the signal. At least, move the detector: even a 20 cm shift can significantly improve the quality of signal reception. If after moving the device still has a low or unstable signal strength, use a signal range extender.

### Do not install the detector:

1. outside the premises (outdoors);
2. nearby sirens and speakers;
3. nearby any metal objects or mirrors causing attenuation or screening of the signal;
4. at any places with fast air circulation (air fans, open windows or doors);
5. inside premises with the temperature and humidity beyond the range of permissible limits;
6. closer than 1 m to the hub.

GlassProtect recognizes glass break at a distance of up to 9 meters. Its microphone should be positioned no more than 90 degrees relative to the window(s). Make sure that any curtains, plants, furniture, or other objects do not overcover the microphone opening. If there are curtains on the window, place the detector between them and the window, for instance, at the window side jamb. Otherwise, curtains can mute the glass break sound, and the detector will not be triggered.

### **Detector installation procedure**

Before installing the detector, make sure that you have selected the optimal location that follows the guidelines of this manual!

1. Fix the SmartBracket attachment panel using bundled screws. If you use any other attachment tools, make sure that they do not damage or deform the attachment panel. Use double-side adhesive tape only for temporary attachment of the detector. The tape runs dry with time, which can cause falling, false triggering, and detector malfunction.
2. Put the detector on the attachment panel. When the detector is fixed in SmartBracket, it blinks with LED, signaling that the tamper is closed. If LED doesn't blink after fixing in SmartBracket, check the status of the tamper in the Ajax app and then the fixing tightness of the panel.
3. If someone detaches the detector from the surface or takes it off the attachment panel, the security system notifies you.

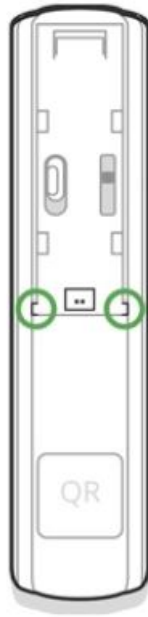
### **Connecting a Wired Detector**

A wired detector with an NC (normally closed) contact type can be connected to GlassProtect using the in-built terminal clamp.





We recommend installing the wired detector at a distance no longer than 1 meter to GlassProtect. Longer wire length increases the risk of its damage and reduces the quality of communication between the detectors. To put out the wire from the detector body, break out the plug:



## Maintenance

Check the operational capability of the detector regularly. Clean the detector body from dust, spider web, and other contaminants as they appear. Use soft dry napkin suitable for tech equipment. Do not use any substances containing alcohol, acetone, gasoline, and other active solvents to clean the detector. The pre-installed battery ensures up to 7 years of autonomous operation (with the 5 minutes ping interval by the hub). If the detector battery is low, the system notifies the user, and the LED indicator smoothly lights up and goes off if a glass break is detected or the tamper is triggered. How long Ajax devices operate on batteries, and what affects this

## Tech specs



## References

- [!\[\]\(6302aad5aed157b291fddf37b4870784\_img.jpg\) End user agreement - Ajax Systems](#)
- [!\[\]\(a9ca2c237943a6d0a9f22252f295b6f3\_img.jpg\) Jeweller radio technology | Ajax Systems](#)
- [!\[\]\(9a01a64e0b4ff865df7d32ee7991fe8b\_img.jpg\) DoorProtect Plus — Opening detector with shock and tilt sensor](#)
- [!\[\]\(6aefe9a3d997eb8b55c40ecd5fa7053f\_img.jpg\) GlassProtect — Wireless glass break detector | Ajax Systems](#)
- [!\[\]\(baa8f8ba8c970db55300f5bb45bb3460\_img.jpg\) Security system control panels | Ajax Systems](#)
- [!\[\]\(a6e28495607b2299466d3d5d3193848c\_img.jpg\) ocBridge Plus — Module for Ajax devices integration with wired systems](#)
- [!\[\]\(ed205fcb6e75c95529564351570724d7\_img.jpg\) Signal range extenders in the security system | Ajax Systems](#)
- [!\[\]\(27a992a1de9d3e89591e2e26256c5a71\_img.jpg\) Alarm sirens for Ajax security systems](#)
- [!\[\]\(4e3fbe2ef35291baab7a42cb80921f3b\_img.jpg\) uartBridge — Module for Ajax devices integration with third-party wireless alarms systems](#)
- [!\[\]\(7e07afcbfd46dd92c708e363ec417c00\_img.jpg\) Software | Ajax Systems](#)
- [!\[\]\(7e5084a8da4d5ff6d50d22c09ead9317\_img.jpg\) Ajax devices standards compliance list](#)
- [!\[\]\(8c0fccc5cb44cb6c2349621b2f03ed16\_img.jpg\) Warranty - Ajax Systems](#)
- [!\[\]\(9a272a5aed417ba1b638a5decd49d86e\_img.jpg\) How battery charge is displayed in Ajax apps | Ajax Systems Support](#)
- [!\[\]\(41c0e1b925839722a4d1554dd00e2252\_img.jpg\) What is Devices Auto Deactivation and how it works | Ajax Systems Support](#)
- [!\[\]\(00ff213f4755bda2684037849bc00d38\_img.jpg\) How to find out the device firmware version | Ajax Systems Support](#)
- [!\[\]\(8ff4178385db741643d613d0a7d58379\_img.jpg\) How to set up the Always active operation mode | Ajax Systems Support](#)
- [!\[\]\(7def4de0a99ddfe75d69cf0afe068e7a\_img.jpg\) How long Ajax devices operate on batteries, and what affects this | Ajax Systems Support](#)
- [!\[\]\(79069f1973dd6e00fc1d60da2889cbd5\_img.jpg\) How to temporarily deactivate a device without removing it from the system | Ajax Systems Support](#)
- [!\[\]\(4f508e5d117c93060193de6e24fe377b\_img.jpg\) How to change the batteries in the GlassProtect | Ajax Systems Support](#)
- [!\[\]\(cb019e7dc64ba1bb8bebbe5bffe6e051\_img.jpg\) Jeweller radio protocol: technology and capabilities | Ajax Systems Support](#)
- [!\[\]\(eb48a4dd3e934293628d697e7cf3388e\_img.jpg\) What is Attenuation Test | Ajax Systems Support](#)
- [!\[\]\(eccf00db8ce906ca827ef08d7ba852be\_img.jpg\) What is Delay When Entering/Leaving | Ajax Systems Support](#)
- [!\[\]\(9514d4e17183bd788e8152b14b4a8a94\_img.jpg\) What is Detection Zone Test | Ajax Systems Support](#)
- [!\[\]\(ea276077c9ef4375874168cf7908c753\_img.jpg\) What is Chime, and how does this function work | Ajax Systems Support](#)
- [!\[\]\(7773a32517fcdfbfc654cf1c8b05374f\_img.jpg\) What is Chime, and how does this function work | Ajax Systems Support](#)
- [!\[\]\(c04ce7ca8ee5b189f3fbd8e890366fe3\_img.jpg\) What is Jeweller Signal Strength Test | Ajax Systems Support](#)