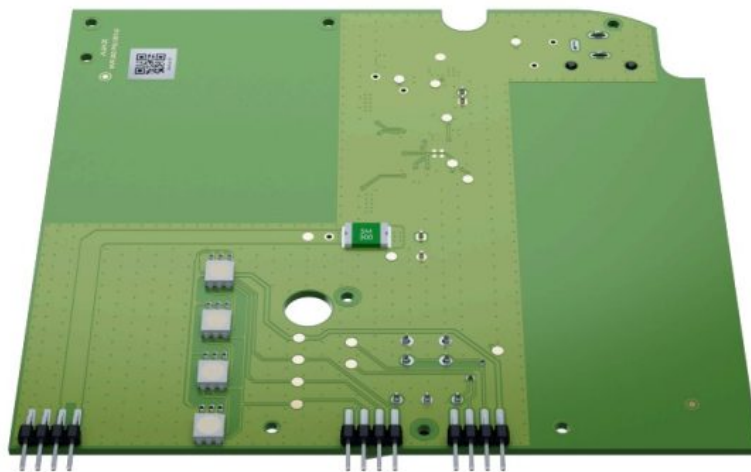


AJAX 12V PSU for NVR Low Voltage Power Supply Unit Instructions

[Home](#) » [ajax](#) » AJAX 12V PSU for NVR Low Voltage Power Supply Unit Instructions 



Power supply unit for the device operation on a low-voltage power source

Contents

- [1 Uninterrupted recording in a power outage](#)
- [2 Hassle-free installation](#)
- [3 Documents / Resources](#)
 - [3.1 References](#)

Uninterrupted recording in a power outage

12V PSU for NVR is an electronic board that is installed into the video recorder enclosure, replacing the standard

110/230 V~ power supply unit. With the alternative power supply unit, an Ajax NVR can operate on a low-voltage power source instead of the facility's power grid. This setup ensures continuous video recording, making it ideal for protecting property with unstable or no power supply.



Hassle-free installation

A professional electrician can install the alternative power supply unit into a network video recorder in just about 10 minutes, using a single PH1 screwdriver and the device manual.

12V PSU for NVR supports two operating modes:

8-16 V ===

In this mode, an Ajax video recorder operates within the 8-16 V === voltage range. A jumper should not be installed.

- 12V PSU for NVR is installed directly inside the NVR enclosure, replacing the standard 110/230 V === power supply unit.
- A standard jack plug is used to connect the power cable.
A terminal adapter is included in the complete set.

12.1-16 V ===

This mode allows an Ajax video recorder to operate on a voltage that exceeds 12 V ===. To prevent a full discharge of the power supply, the NVR automatically switches off if the voltage drops below 10.35 V. A jumper must be installed.

Compatibility NVR (8-ch) NVR (16-ch)	Connection to mains Socket 6.5 x 2.0 mm 0.26 x 0.08 Power jack (female) Plug 5.5 x 2.1 mm 0.22 x 0.08 Power jack (female) Connected cable cross-section AWG12-14	Input without a jumper Operating voltage 8-16 V = Maximum current consumption up to 4 A When output maximum current consumption is 2 A Turn-on threshold when the voltage rises 8.1 V= In the no-load state Turn-off threshold when the voltage drops 8.0 V= In the no-load state	Input with a jumper Operating voltage 12.1-16 V= Maximum current consumption up to 4 A When output maximum current consumption is 2 A Turn-on threshold when the voltage rises 12.1 V= In the no-load state Turn-off threshold when the voltage drops 10.35 V= In the no-load state
Output Nominal voltage 12 V= ± 3% Shutdown device's current consumption 110 µA Quiescent device's current consumption 65mA Maximum device's current consumption 2A	Installation Installation method inside the NVR enclosure Operating temperature range from 0 °C to +40 °C from 32 °F to 104 °F Operating humidity up to 75% Protection class IP20	Board Color N/A Dimensions 118 x 123 x 17 mm 4.64 x 4.84 Weight 51 g 1.80 oz x 0.67 11	Complete set 12V PSU for NVR Terminal adapter Quick start guide



Documents / Resources

	AJAX 12V PSU for NVR Low Voltage Power Supply Unit [pdf] Instructions NVR 8-ch, NVR 16-ch, 12V PSU for NVR Low Voltage Power Supply Unit, 12V PSU for NVR, Low Voltage Power Supply Unit, Voltage Power Supply Unit, Power Supply Unit
--	---

References

- [12V PSU for NVR](#)
- [User Manual](#)

[Manuals+](#), [Privacy Policy](#)

This website is an independent publication and is neither affiliated with nor endorsed by any of the trademark owners. The "Bluetooth®" word mark and logos are registered trademarks owned by Bluetooth SIG, Inc. The "Wi-Fi®" word mark and logos are registered trademarks owned by the Wi-Fi Alliance. Any use of these marks on this website does not imply any affiliation with or endorsement.