

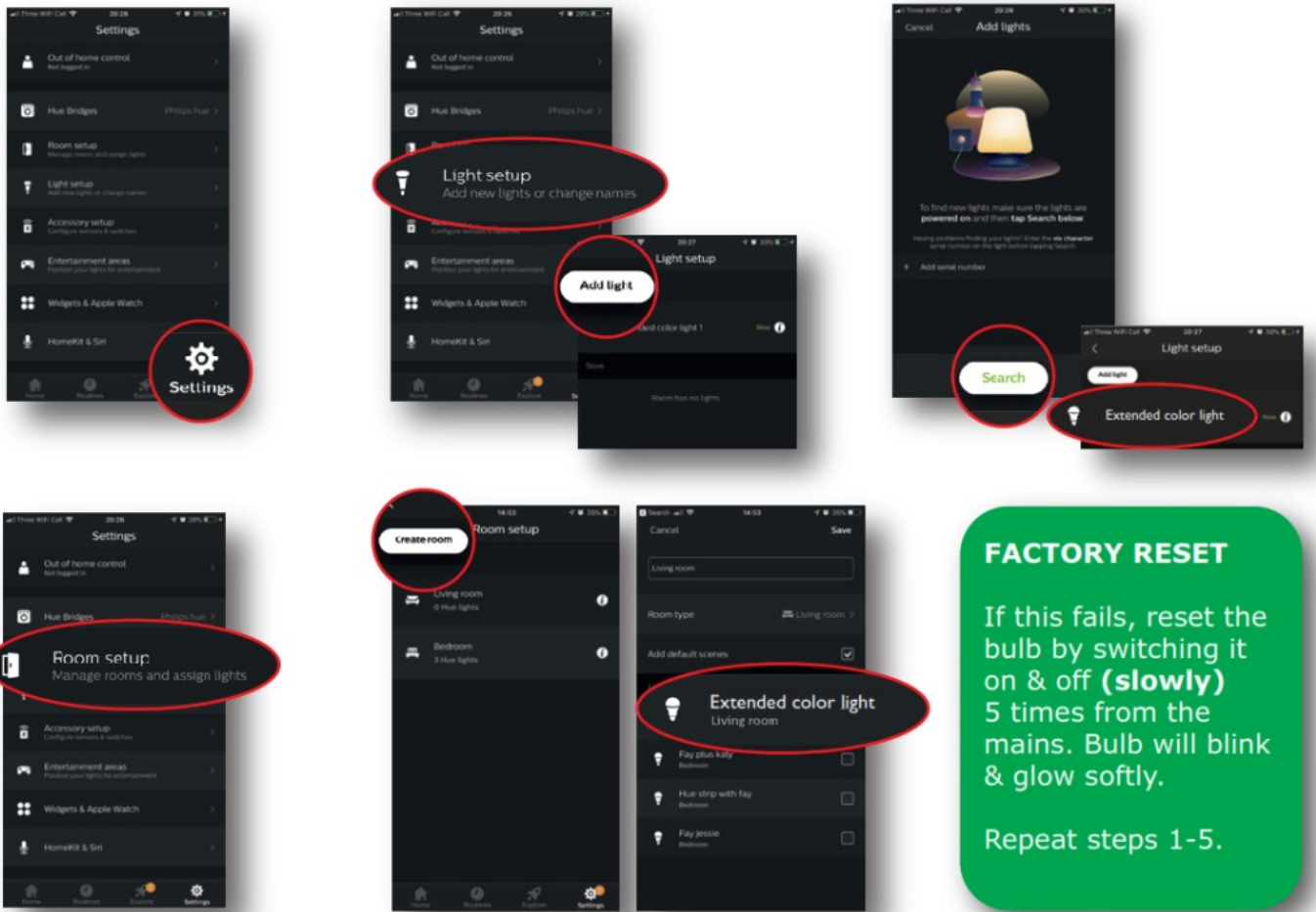


## Ajax Online Zigbee GU10 Bulb Pairing User Manual

[Home](#) » [Ajax Online](#) » Ajax Online Zigbee GU10 Bulb Pairing User Manual 



Instructions for pairing with  
Philips Hue Bridge



## Contents

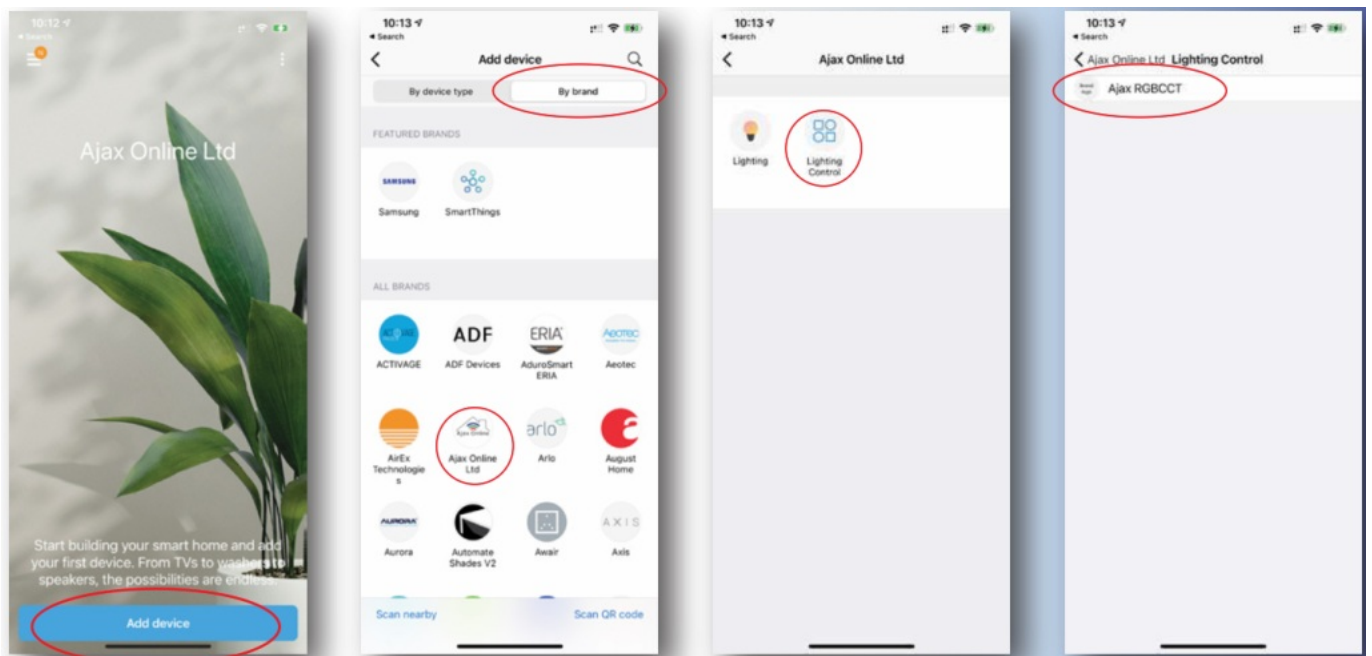
- 1 Home Automation Made Easy
- 2 Free Warranty
- 3 Documents / Resources
- 4 Related Posts

## Home Automation Made Easy

For all the latest products, downloads, and news please visit [www.ajaxonline.co.uk](http://www.ajaxonline.co.uk) to keep up do date with all things home automation.

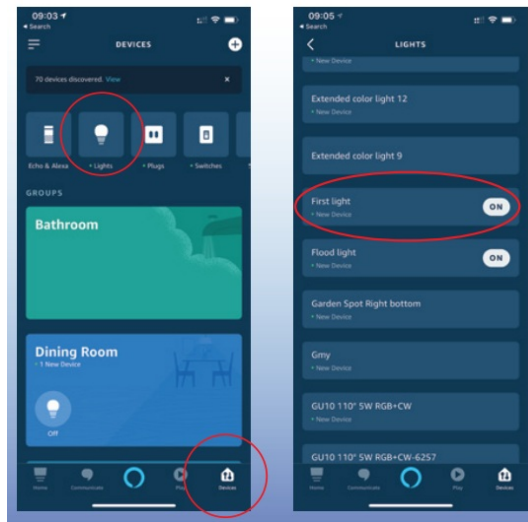


For further information, please contact us and we'll be happy to assist you.



1. Ask Alexa to “Discover devices”
2. Now insert the bulb and turn it on.
3. Although Alexa will say “No new smart home devices were discovered”
4. In the Alexa app and select “Devices”, you will see your new device (first light, second light, third light, fourth light, etc) under “Lights”.





## Free Warranty

Activate your free warranty...

Please do this at your earliest convenience.

It takes a couple of minutes and you'll have total peace of mind.

If you have any issues, please do not hesitate in contacting us at [info@ajaxonline.co.uk](mailto:info@ajaxonline.co.uk)

**REGISTER ONLINE**

[www.ajaxonline.co.uk/warranty](http://www.ajaxonline.co.uk/warranty)

[support@ajaxonline.co.uk](mailto:support@ajaxonline.co.uk) | [www.ajaxonline.co.uk](http://www.ajaxonline.co.uk)

## Documents / Resources



[Ajax Online Zigbee GU10 Bulb Pairing](#) [pdf] User Manual  
Zigbee GU10 Bulb Pairing