



## Ajax Online Smart WIFI Blind Motor Instructions

[Home](#) » [Ajax Online](#) » Ajax Online Smart WIFI Blind Motor Instructions 

### Contents

- [1 Ajax Online Smart WIFI Blind Motor](#)
- [2 Smart WIFI Blind Motor](#)
- [3 Smart WIFI Blind Motor](#)
- [4 Documents / Resources](#)
- [5 Related Posts](#)



**Ajax Online Smart WIFI Blind Motor**

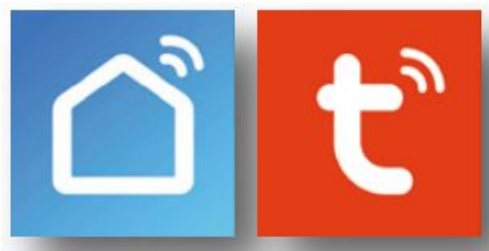


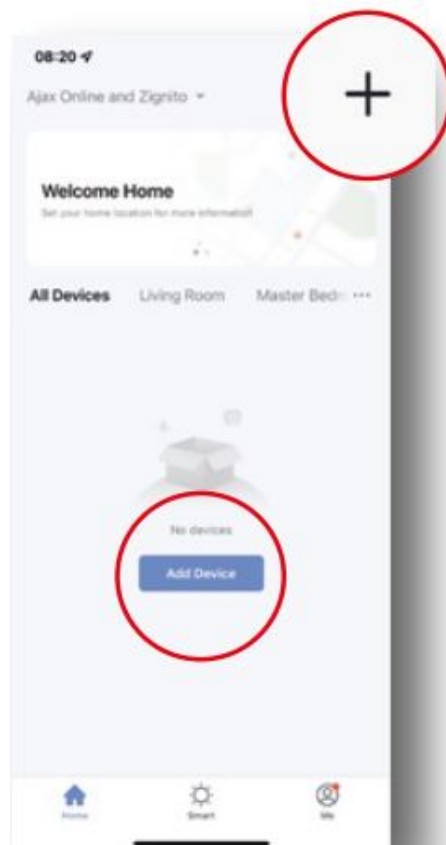
## Smart WIFI Blind Motor

### Method 1: Instructions for pairing with Smart Life/Tuya

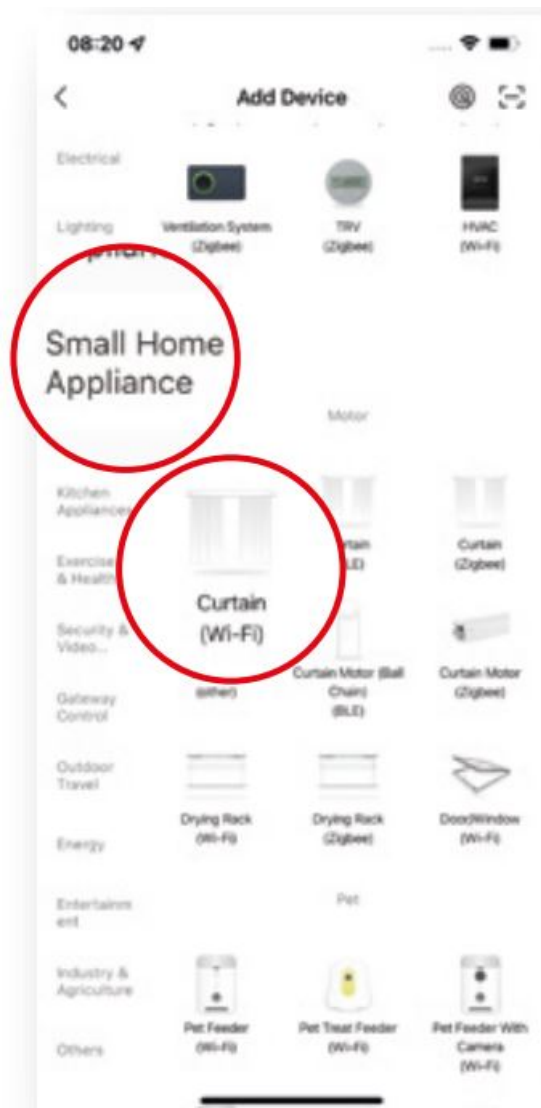
Please note that you need to pair each device one at a time. Please ensure that your WIFI connection is on 2.4 GHz

1. **Download and register an account on the Smart Life or Tuya App. Then select “+”.**



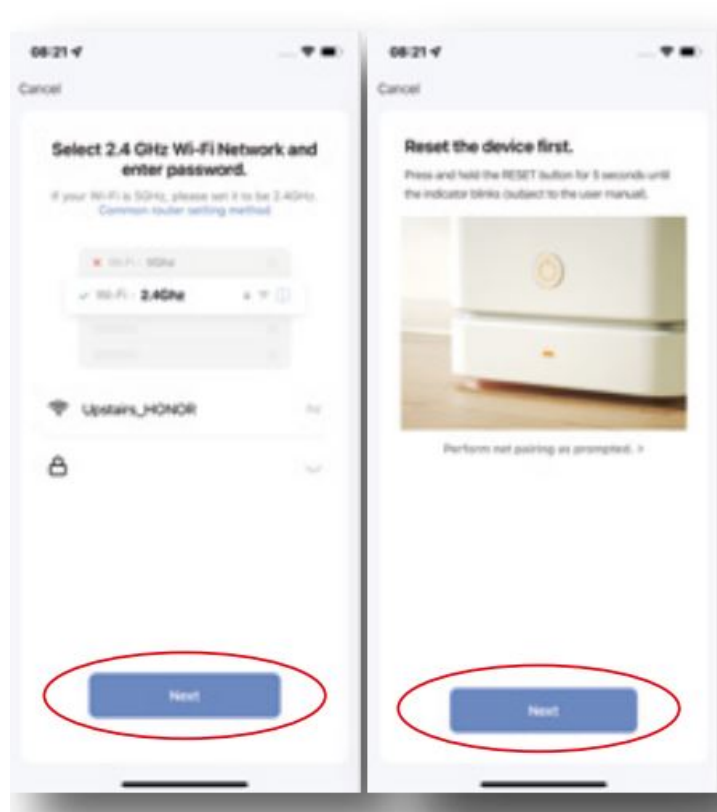


2. Select “Small Home Appliance” and then scroll down and select “Curtain (Wi-Fi)”.

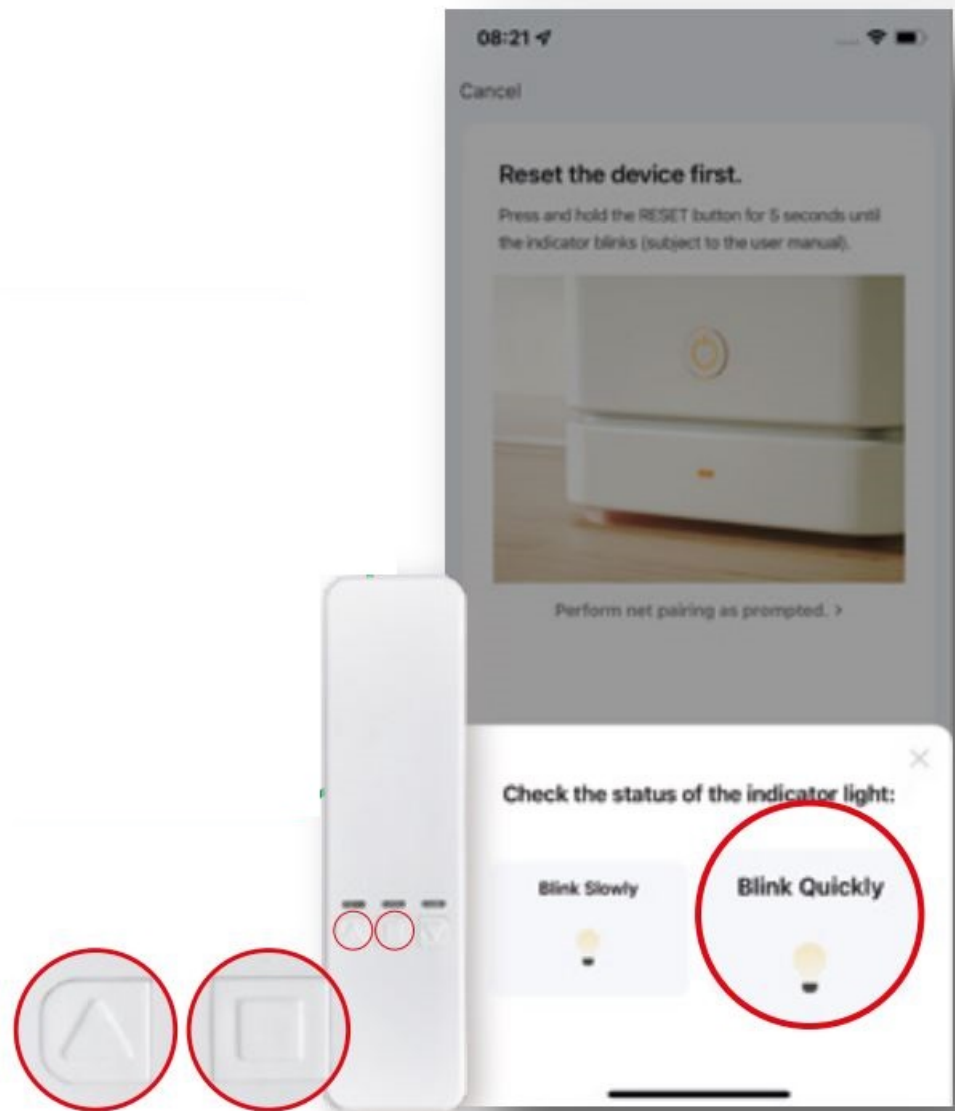


3. Enter your WIFI credentials to connect to your home network. Please ensure that the WIFI network is

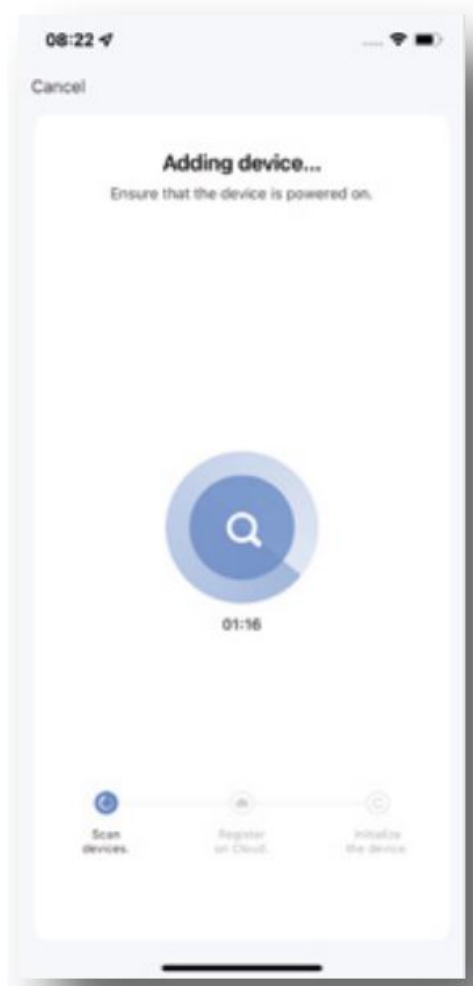
2.4 GHz.



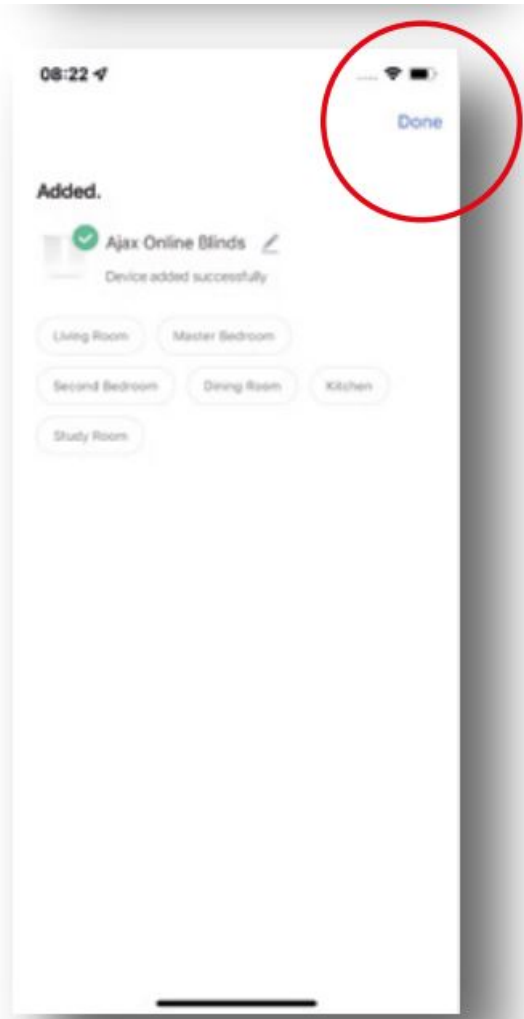
4. Press and hold the “UP” & “STOP” button for 6 seconds until the LED flashes BLUE & GREEN on the motor & select “BLINK QUICKLY” on the app.



5. Now wait until the device is discovered.



6. Once the device is discovered, rename it and select “Done”.



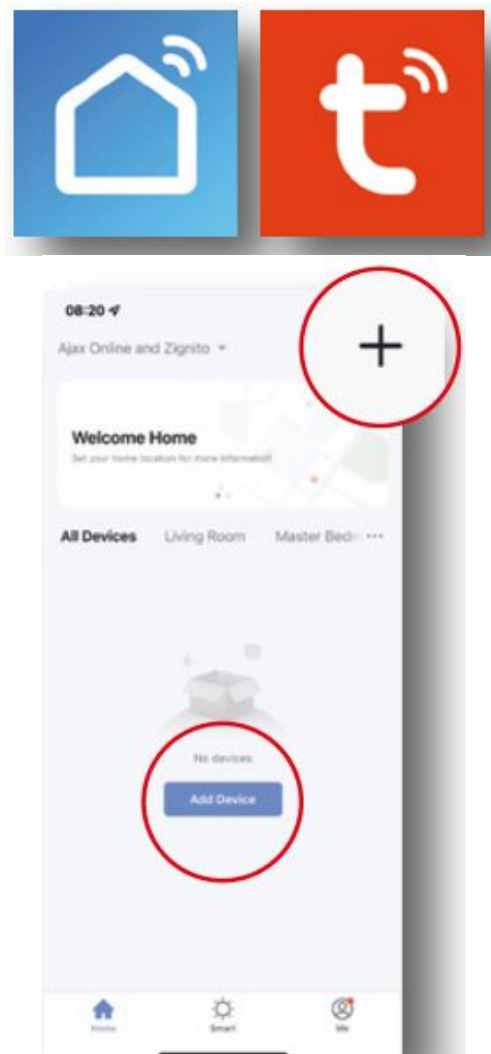
For further information, please contact us and we'll be happy to assist you.

## Smart WIFI Blind Motor

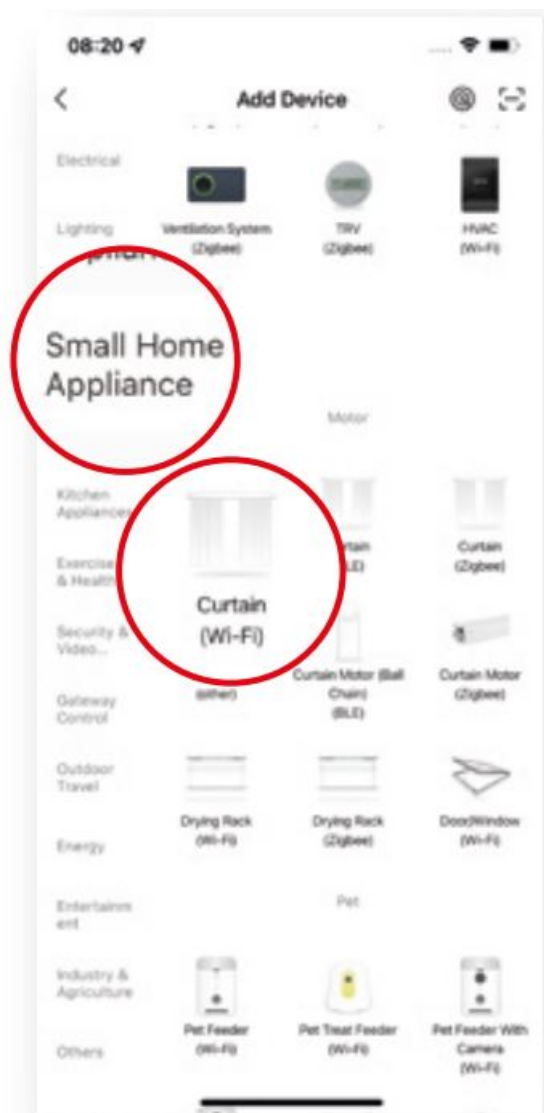
### Method 2: Instructions for pairing with Smart Life/Tuya

Please note that you need to pair each device one at a time. Please ensure that your WIFI connection is on 2.4 GHz

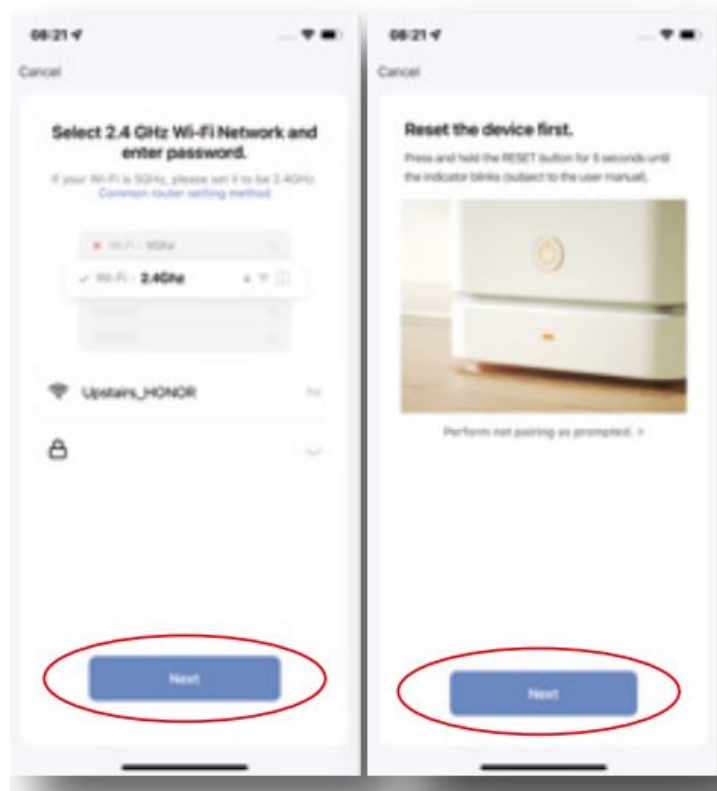
1. Download and register an account on the Smart Life or Tuya App. Then select “+”.



2. Select “Small Home Appliance” and then scroll down and select “Curtain”.

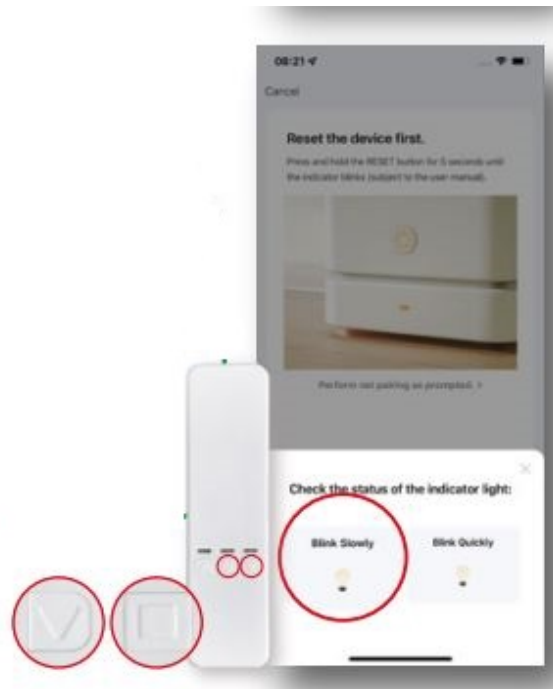


3. Enter your WIFI credentials to connect to your home network.

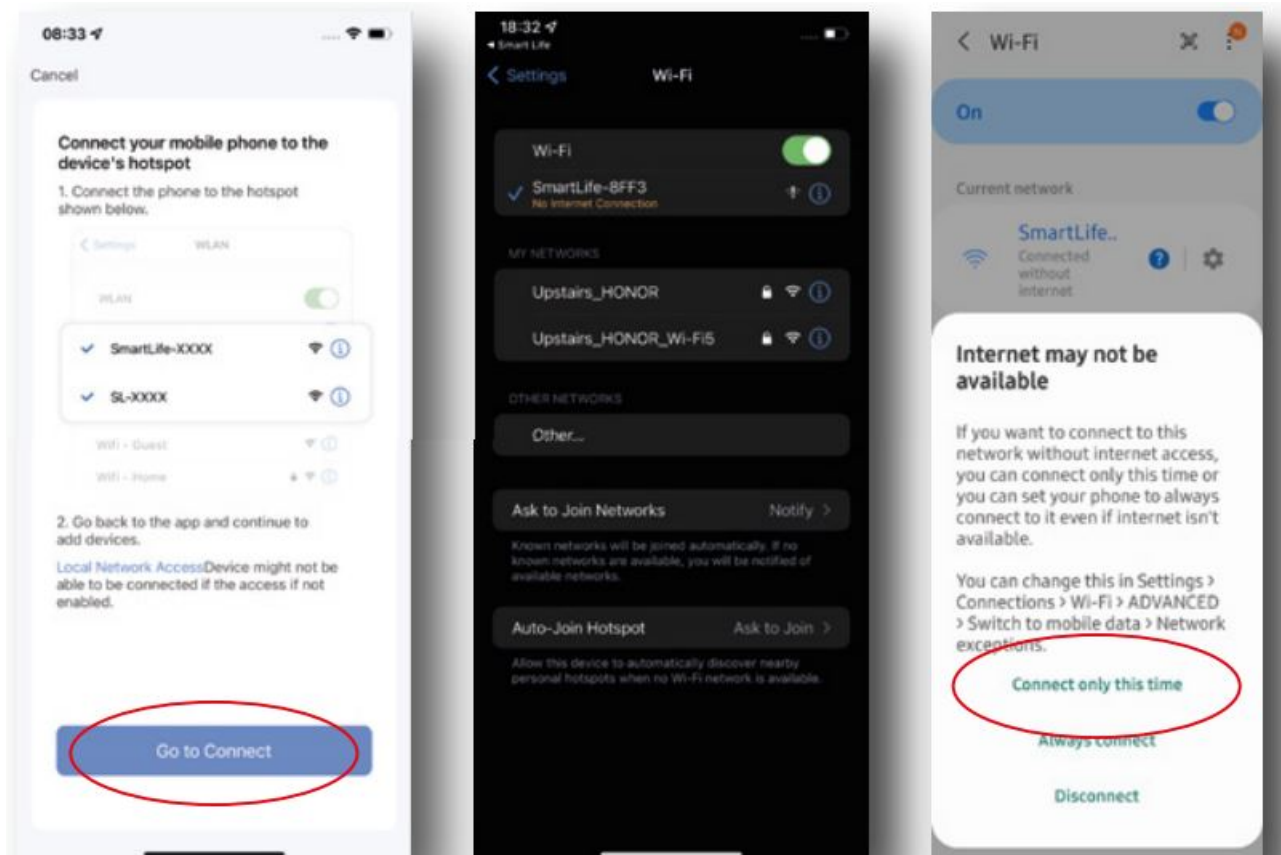




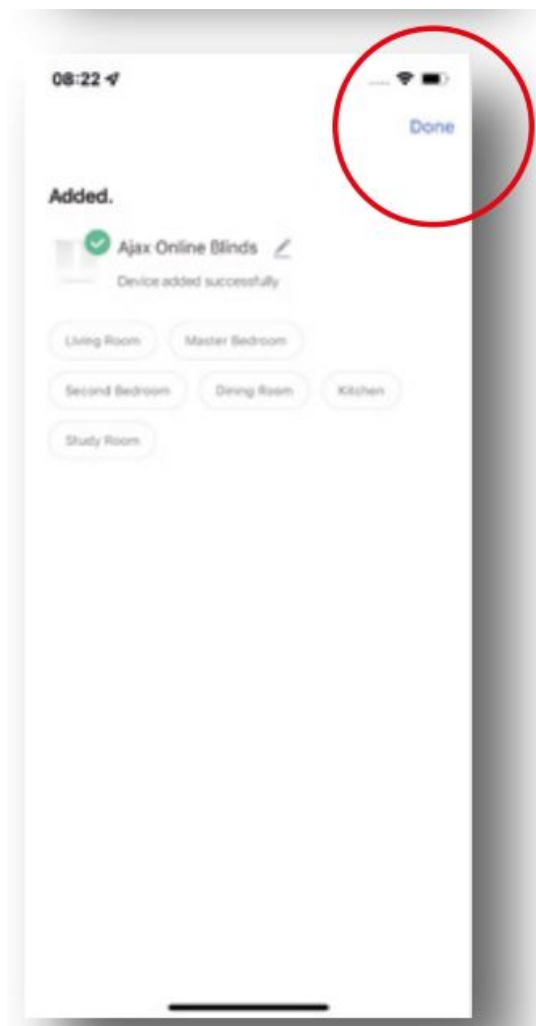
4. Press and hold the “DOWN” & “STOP” button for 6 seconds until the LED flashes RED & GREEN on the motor & select “BLINK SLOWLY” on the app.



5. Select “Go to Connect” & then select “SmartLife-XXXX” in your device’s WIFI settings. Finally go back to the app to continue. Your device may notify you that you may need to continue WITHOUT INTERNET. Please select “Connect only this time”. Please note: notification will differ depending on your operating system



6. Once the device has finished connecting and is discovered, rename it and select “Done”.



## Documents / Resources



[Ajax Online Smart WIFI Blind Motor](#) [pdf] Instructions  
Smart WIFI Blind Motor