



# AIZAWA 2-Pack Led Corner Lamp Instruction Manual

[Home](#) » [AIZAWA](#) » AIZAWA 2-Pack Led Corner Lamp Instruction Manual 

AIZAWA 2-Pack Led Corner Lamp Instruction Manual

# AIZAWA

## RGBICW Floor Lamp



User Manual

Model: RGB Pro

### Contents

- [1 Safety Instructions](#)
- [2 Introduction](#)
- [3 What You Get](#)
- [4 At a Glance](#)
- [5 Installing Your Device](#)
- [6 Pairing Your Lamp with the Smart Life App](#)
- [7 Specifications](#)
- [8 Troubleshooting](#)
- [9 Documents / Resources](#)
  - [9.1 References](#)

## Safety Instructions

Read and follow all safety instructions in this manual.

- This lamp is not waterproof. Avoid exposing it to splashing or dripping water.
- Operating temperature should be within -10°C to 40°C | 14 ° F to 104 °F.
- This lamp's internal light source cannot be replaced. If it breaks, you must replace the entire lamp.
- Do not allow children to assemble the lamp by themselves.
- Avoid placing the lamp near heat sources.
- Avoid placing the lamp near potentially dangerous sources (e.g. , candles, liquid-filled objects, etc.).

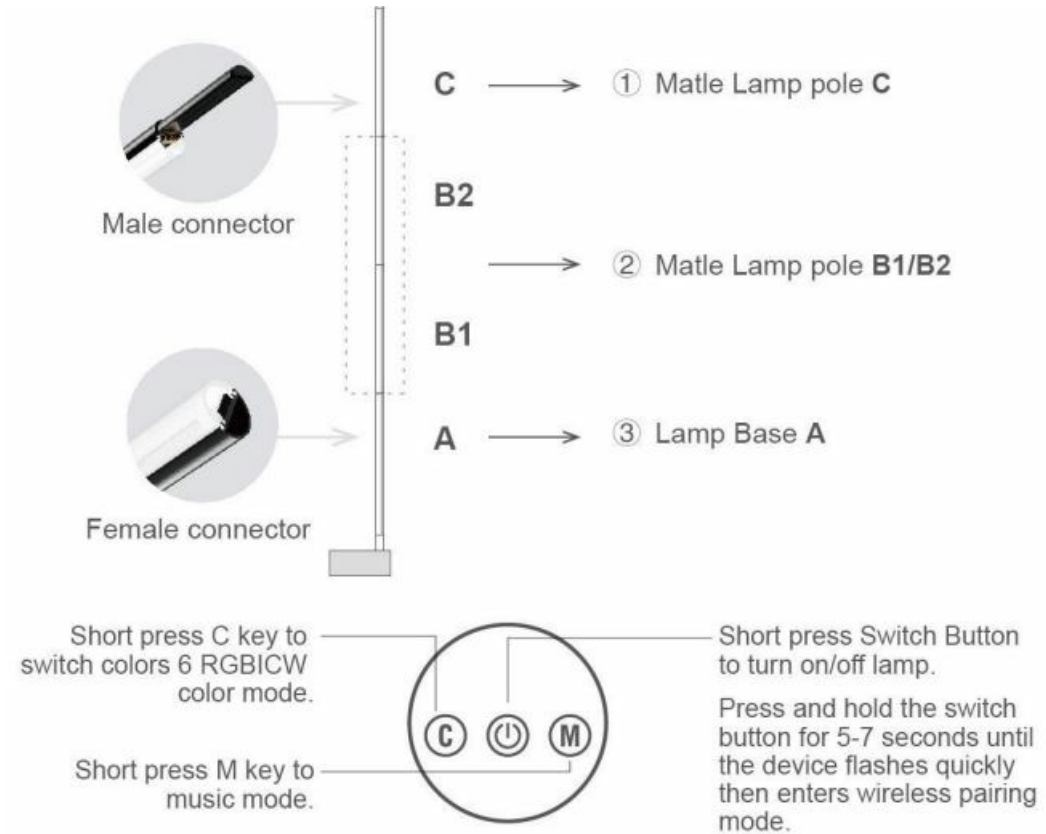
## Introduction

Thanks for choosing the Aizawa floor lamp. This floor lamp creates an inviting, cozy atmosphere in your home with its wide range of choices from 16 million kinds of color. You can also select from different scene modes from the Smart Life app to achieve an unique addition to your space. When the music mode is enabled, you can immerse the joy while seeing the glorious lighting dance with the singing tune. The connection with Alexa or Google Assistant can bring your smart home life to another level by voice-control the lighting.

What You Get

Floor Lamp	2
Power Adapter	2
User Manual	1
Service Card	1

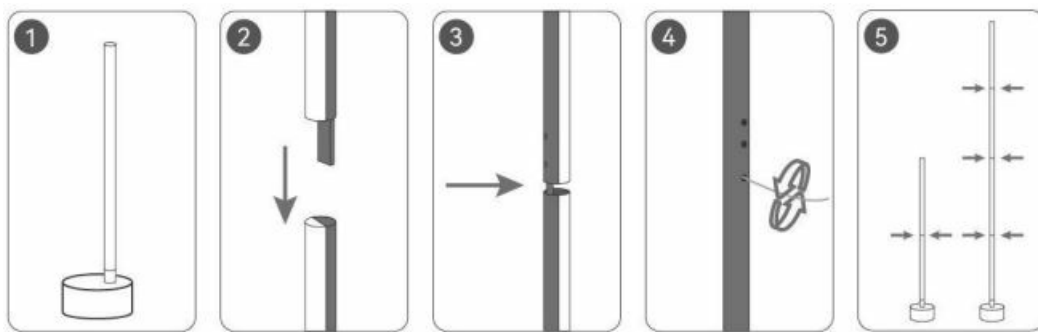
At a Glance



Installing Your Device

Installing Steps

1. Assemble this floor lamp by the following steps.



2. Power on the adapter.

## Pairing Your Lamp with the Smart Life App

### What you need:

A Wi-Fi router supporting the 2.4GHz. 5GHz is not supported.

1. Download the Smart Life app from the App Store (iOS devices) or Google Play (Android devices).
2. Enable Bluetooth on your smartphone.
3. Open the app, tap the “+” icon in the top right corner, and search “RGBICW Floor Lamp”.
4. Tap the device icon and follow the onscreen instructions to complete the pairing.



<https://apps.apple.com/us/app/smart-life-smart-living/id1115101477>



<https://play.google.com/store/apps/details?id=com.tuya.smartlife&hl=en&gl=US>

## Specifications

Model	RGB Pro
Adapter Input	AC 100-240V
Lamp Input	12V 1A
Lumens	960 lm
Colors	RGB and Warm White
Color Temperature	2700K-6500K
Control Method	App Control, Voice Control, Touch Control
Working Temperature	-10℃ to 40℃ / 14℉ to 104℉

## Troubleshooting

1. Cannot connect to the Smart Life App.
  - a. Check if the lamp is powered on.
  - b. Check if Bluetooth on the smartphone is enabled , or try connecting with another smartphone.
  - c. When connecting for the first time, ensure the smartphone is near the lamp.
  - d. If the connection error still exists, please delete the connected device from “My Device” on the app. Reconnect to the Smart Life App by following the instructions provided previously.
2. Wi-Fi disconnects or fails to connect.
  - a. Check that the lamp is powered on.
  - b. Do not skip the Wi-Fi connection steps during the device pairing process.
  - c. Ensure your Wi-Fi is 2.4GHz (5GHz is not supported).
  - d. Ensure you have entered the correct Wi-Fi password during the Wi-Fi setup process.
  - e. Try using another smartphone to pair with the lamp to ensure your network is working properly.
  - f. Shorten the distance between the lamp and the Wi-Fi router to less than 50 inches, then reconnect.
3. Cannot connect to Alexa or Google Assistant.
  - a. Ensure the Wi-Fi connection is stable and working properly.
  - b. Go to “User Guide” in the app settings page to pair the lamp again.
4. Can the controls be synced for multiple lamps?
  - a. Use the Group Control on the Smart Life App to control those RGBICW floor lamps simultaneously.

## FCC Statement

This device has been tested and found to comply with the limits for a class B digital device, pursuant to part 15 of the FCC Rules.

These limits are designed to provide reasonable protection against harmful interference in a residential installation. This device generates, uses and can radiate radio frequency energy and, if not installed and used in accordance with the instructions, may cause harmful interference to radio communications.

However, there is no guarantee that interference will not occur in a particular installation. If this device does cause harmful interference to radio or television reception, which can be determined by turning the device off and on, the user is encouraged to try to correct the interference by on or more of the following measures:

- Reorient or relocate the receiving antenna.

- Increase the separation between the device and receiver.
- Connect the device into an outlet on a circuit on a circuit different from that to which the receiver is connected.
- Consult the dealer or an experienced radio/TV technician for help.

**Caution:** Any changes or modifications to this device not explicitly approved by manufacturer could void your authority to operate this device.

This device complies with part 15 of the FCC Rules. Operation is subject to the following conditions: 1 )This device may not cause harmful interference. And 2) This device must accept any interference received, including interference that may cause undesired operation.

## RF Exposure Information

This device complies with FCC radiation exposure limits set forth for an uncontrolled environment. This device should be installed and operated with minimum distance 20cm between the radiator and your body.

## Customer Service

-  Warranty: 2-Year Limited Warranty
-  Support: Lifetime Technical Support
-  Email: [gudisinc@outlook.com](mailto:gudisinc@outlook.com)
-  Official Website: [www.ledlightsdecor.com](http://www.ledlightsdecor.com)
-     @AizawaLamp

[gudisinc@outlook.com](mailto:gudisinc@outlook.com)  
[www.ledlightsdecor.com](http://www.ledlightsdecor.com)

[YouTube](#)  
[Instagram](#)  
[Facebook](#)  
[Pinterest](#)

## Responsible party:

Name: Gudis INC

Address: 88 E South 18th Avenue Suite A, CO 80601

Email: [gudisinc@outlook.com](mailto:gudisinc@outlook.com)

Contact information: <https://www.ledlightsdecor.com/support>

This device uses a non-replaceable light source.

When the light source reaches the end of its life cycle, this device should be replaced.



FOR INDOOR USE ONLY

Aizawa is a trademark of Gudis INC.

Copyright ©2023 Gudis INC. All Rights Reserved.



SMART LIFE App

For FAQs and more information, Please visit: [www.ledlightsdecor.com](http://www.ledlightsdecor.com)

---

## Documents / Resources



[AIZAWA 2-Pack Led Corner Lamp](#) [pdf] Instruction Manual  
2-Pack Led Corner Lamp, 2-Pack, Led Corner Lamp, Corner Lamp, Lamp

## References

- [User Manual](#)