



AiT C800A Wireless Intercom System User Manual

[Home](#) » [AiT](#) » AiT C800A Wireless Intercom System User Manual 

Contents

- [1 AiT C800A Wireless Intercom System](#)
- [2 Product Information](#)
- [3 Product Usage Instructions](#)
- [4 Documents / Resources](#)



AiT C800A Wireless Intercom System



Product Information

This product is identified by the following information:

- IC: 27400-C800A
- FCC ID: 2AZ6O-C800A

The product consists of an EUT (Equipment Under Test) with internal components and an ANT port.

Product Usage Instructions

To use this product, please follow the steps below:

Step 1: Opening the EUT

Refer to Figure 1 and Figure 2 in the user manual for a visual representation of the internal and open views of the EUT.

Step 2: Internal View of the EUT

Refer to Figure 1, Figure 2, Figure 3, and Figure 4 in the user manual for detailed internal views of the EUT.

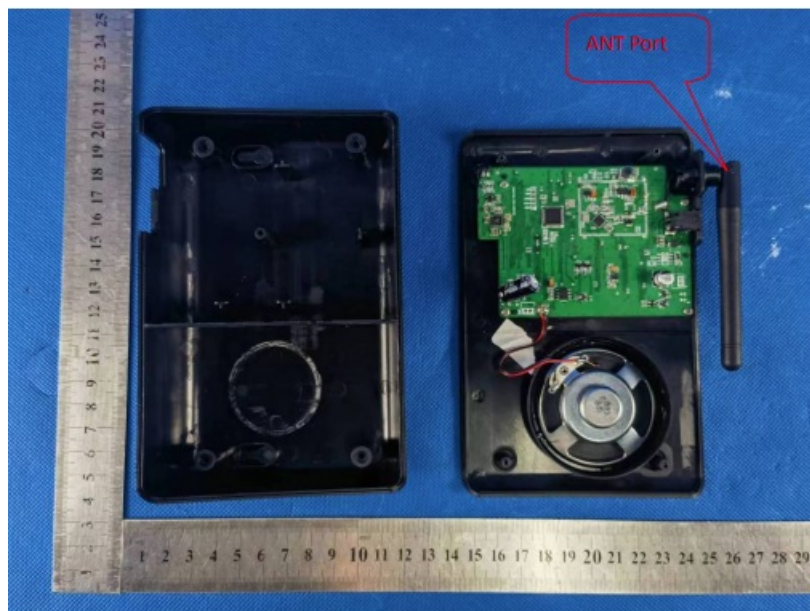
Step 3: Connecting to the ANT Port

The EUT is equipped with an ANT port. Use the appropriate cable or connector to connect external devices to the ANT port for communication or other purposes.

Please note that further instructions on specific usage scenarios, troubleshooting, and safety precautions may be provided in separate sections of the user manual. It is important to read and understand the entire manual before operating the product.

INTERNAL PHOTOS

- OPEN VIEW OF EUT (FIGURE 1)

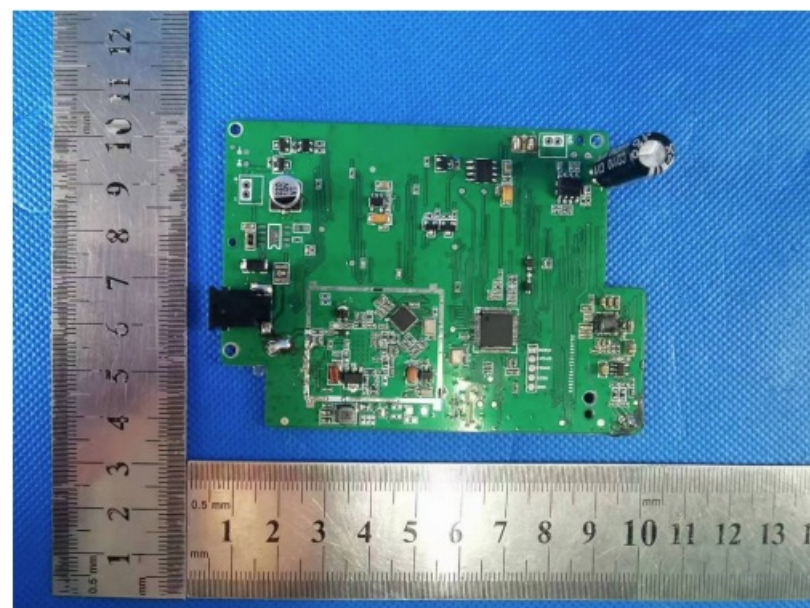


- OPEN VIEW OF EUT (FIGURE 2)

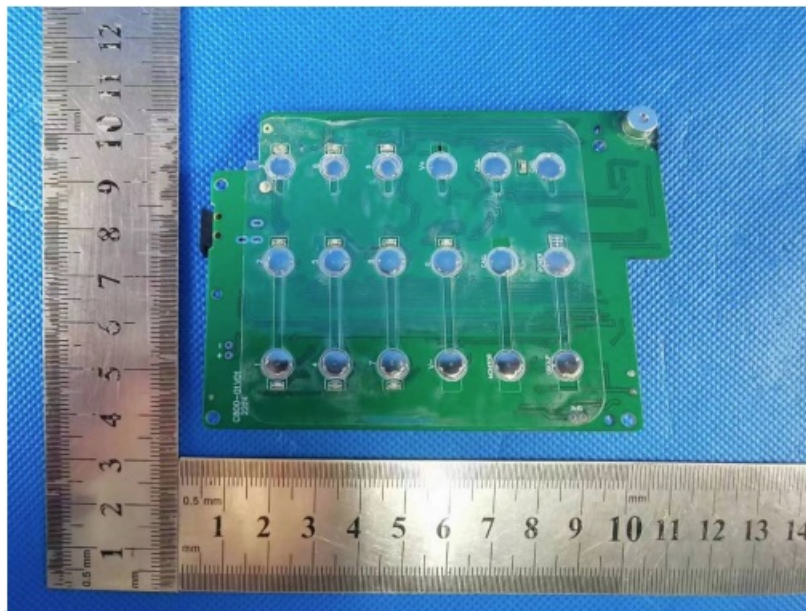


- INTERNAL VIEW OF EUT (FIGURE 1)

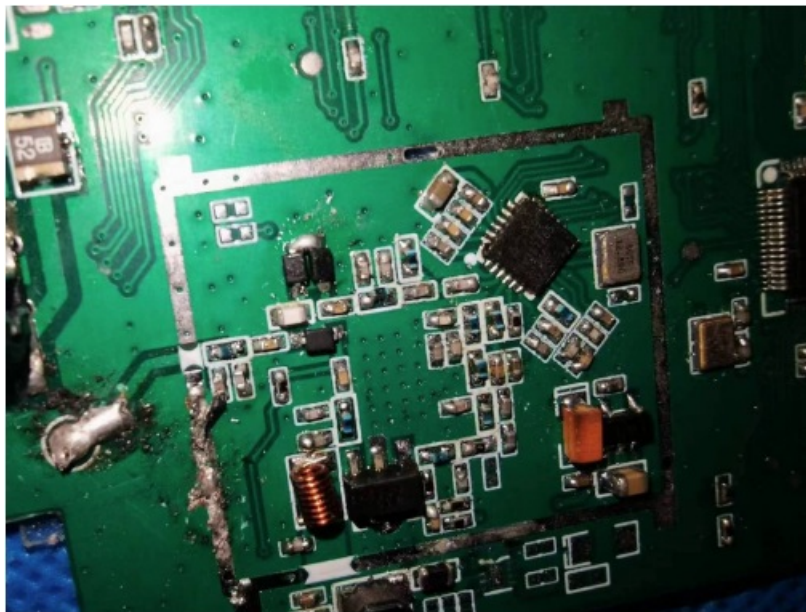
-



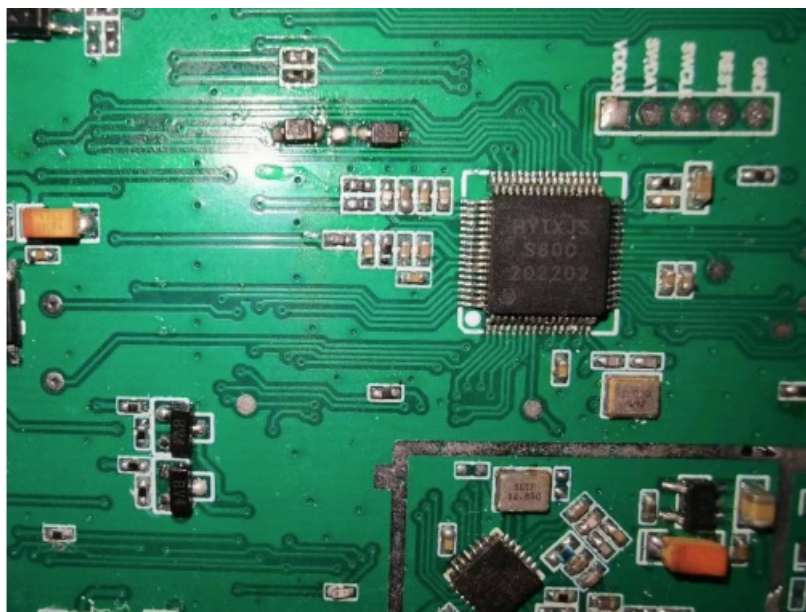
INTERNAL VIEW OF EUT (FIGURE 2)



- INTERNAL VIEW OF EUT (FIGURE 3)




- INTERNAL VIEW OF EUT (FIGURE 4)



END OF REPORT

Documents / Resources

	<p>AiT C800A Wireless Intercom System [pdf] User Manual</p> <p>C800A Wireless Intercom System, C800A, Wireless Intercom System, Intercom System</p>
---	---