



AIRZONE EASYZONE EZ8 Main Control Board Replacement User Manual

[Home](#) » [AIRZONE](#) » AIRZONE EASYZONE EZ8 Main Control Board Replacement User Manual 

Contents

- [1 AIRZONE EASYZONE EZ8 Main Control Board Replacement](#)
- [2 Product Information](#)
- [3 Product Usage Instructions](#)
 - [3.1 Assembly](#)
 - [3.2 Connection](#)
- [4 Device Elements](#)
- [5 Functionalities](#)
- [6 EU.BAC](#)
- [7 FCC](#)
- [8 CONFIGURATION](#)
 - [8.1 AIRZONE BLUEFACE](#)
 - [8.2 AIRZONE THINK](#)
- [9 AIRZONE LITE](#)
- [10 Frequently Asked Questions \(FAQ\)](#)
- [11 Documents / Resources](#)
 - [11.1 References](#)



AIRZONE EASYZONE EZ8 Main Control Board Replacement



Product Information

Technical Specifications

- Stand-by Consumption: 4.85 W
- Frequency: 60/50 Hz
- Current: 250 mA
- Shielded Twisted Pair Cables (AZ1, AZ2, AZ3, IU): 2 x 0.22 + 2 x 0.5 mm²
- Shielded Twisted Pair Cable (DM1): 2 x 0.22 + 2 x 0.5 mm²
- Communications Protocol: MODBUS RS-485
- Wireless Frequency: Airzone 868.12 MHz (EU), 915.2 MHz (EEUU, Canada, Australia, Nueva Zelanda)
- Transmission Power: 5 dBm
- Maximum Range: 40 m
- IO1 ... IO8 Max Voltage: 34 V
- IO1 ... IO8 Max Current: 270 mA
- IAQ Max Voltage: 5 V
- IAQ Max Current: 100 mA
- O1 – O2 Max Voltage: 250 Vac / 24 Vdc
- O1 – O2 Max Current: 12 A
- Operating Temperatures: Storage / Almacenaje / Armazenamento
- Weight: 616 g

Product Usage Instructions

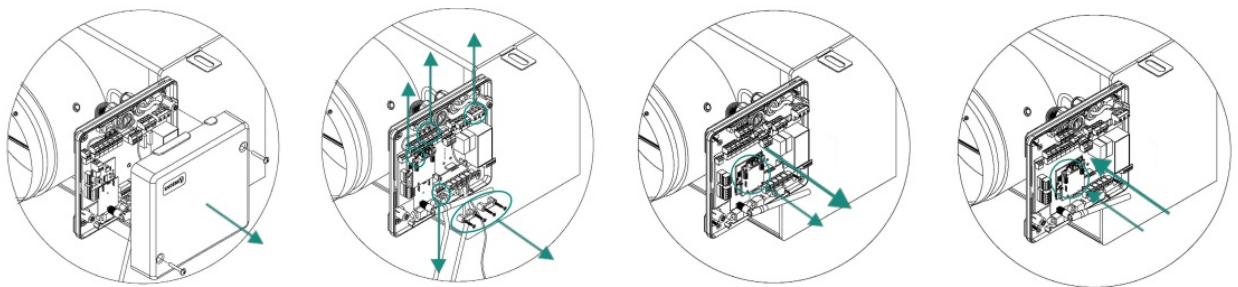
Assembly

Connect the device following the instructions:

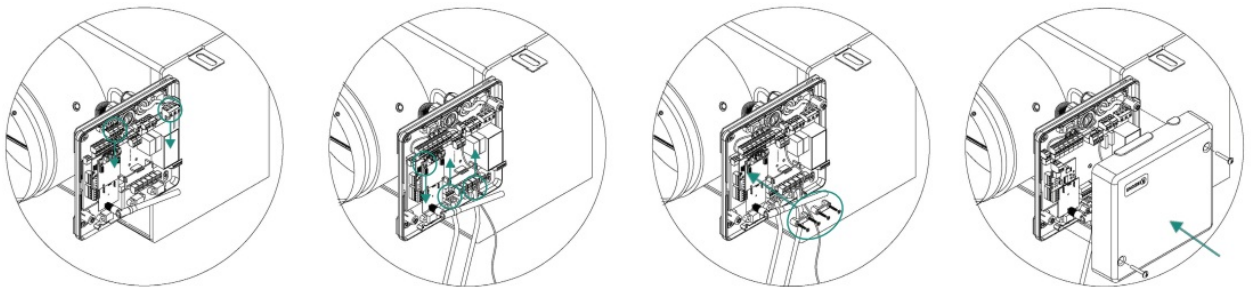
1. Connect the Neutral wire (N) and the Phase wire (L).
2. Connect IO1...IO8, IAQ, AZ1/2/3, and DM1 as required.
3. For optional on/off functionality, connect the contact on/off.
4. **IMPORTANT:** Disconnect the power cable before starting the replacement of the system's main control board.

Reconnect the power cord after installation is complete.

1. Unscrew the cover; the screws are self-retaining
2. Release the clamps holding the cables and disconnect all connectors.
3. Unscrew the screws that hold the main control board fixed to the plenum and remove it.
4. Install the new main control board using the same screws. Be sure the damper connectors are on the upper side.



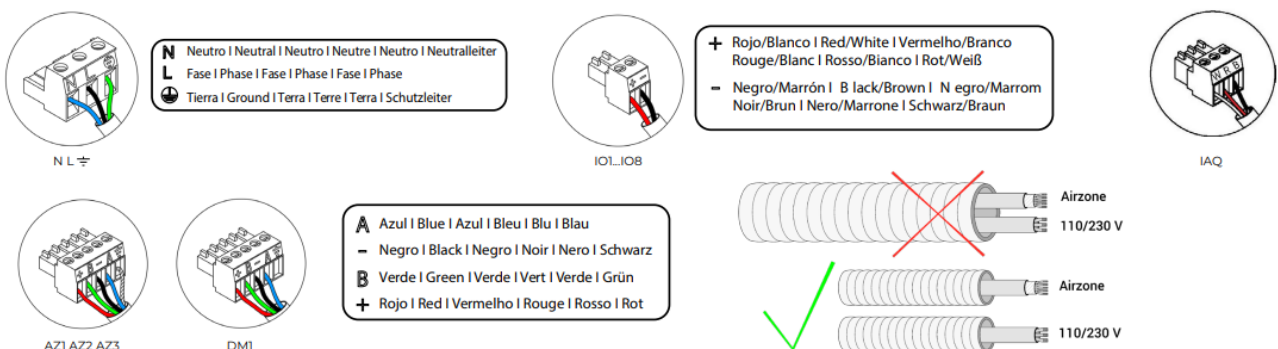
5. Reconnect all the connectors as they were previously installed. Check that the damper cables numbers correspond to the connectors numbers in the control board.
6. Reinstall the cable clamps and insert the cover and screw in the retaining screws.



5. **IMPORTANT:** Once the main control board is powered on, all the wireless thermostats must be reset (see the Installation's Manual); all system and zone parameters must be entered, following the initial installation procedure.

Connection

Do not connect the “-” pole to the “+” terminal. It may damage the device.



Device Elements

- AZ1/2/3: Connect to P3
- SW1: Blinking
- IU: Connect IO1...IO8
- DI1: Connect AI1
- O2: Connect to VMC/Caldera (CMV/Boiler)
- N: Connect to Neutral wire
- L: Connect to Phase wire
- IAQ: Optional on/off contact
- D10, D11, D18, D19, D79, D80: Main control board activity indicators

Functionalities

Configurable electronic board that controls the system through wired and wireless devices. Wall mounted.

- Control and management of the thermostats up to 8 zones.
- Power outputs for motorized elements and purification.
- Relay outlet configurable as CMV (Controlled Mechanical Ventilation) or boiler.
- Output for Airzone particle sensor (mandatory).
- Control gateway management.
- Communication with units of integral control of the installation.
- Communications with other external control systems through integration bus.

For further information about our products, go to myzone.airzone.es

EU.BAC

FCC

This device complies with FCC / ISED regulatory notices.

CONFIGURATION

AIRZONE BLUEFACE

Important

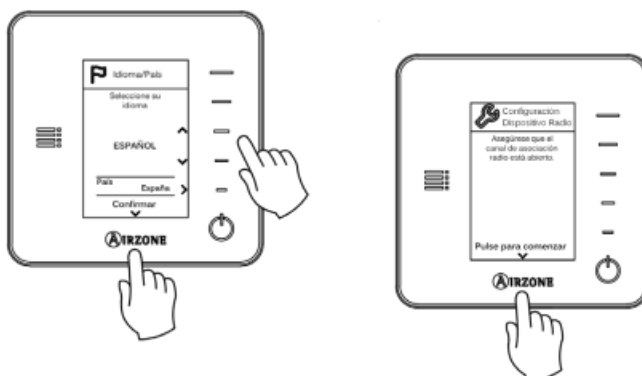
When replacing the system's control board, the Blueface thermostat configuration will not be reset. The time schedules will be the only feature reset. It is necessary to reprogram the personalized time schedules (see the User's Manual).

AIRZONE THINK

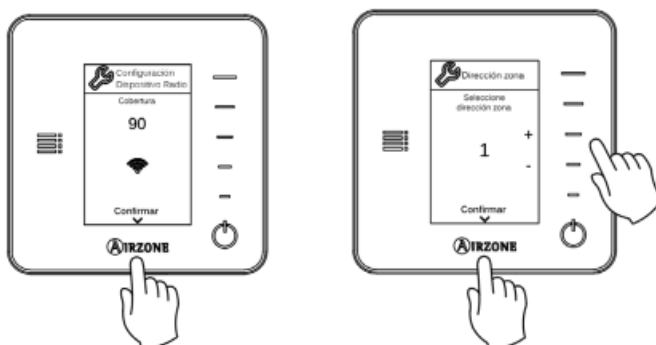
Important

In case of a wired Think Thermostat, the association will be performed automatically. To associate the wireless Think Thermostat, the radio channel needs to be opened. To open the radio channel, press on SW1 (Main Control Board), the LED 19 will remain steady red for 15 min.

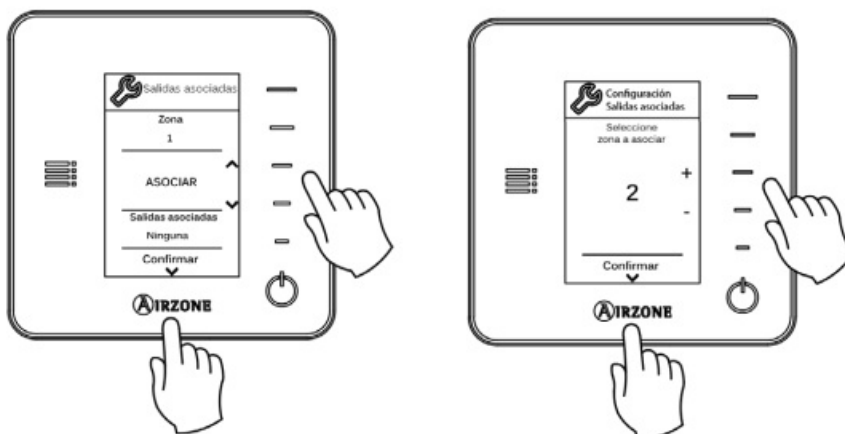
1. Select your language and country
2. To associate the thermostat, press Airzone



3. Verify that received signal power is correct (30% minimum).
4. Select the number of zone associated to the thermostat.




5. Select Associate and press Airzone if additional outputs are needed for this controller/zone
6. Select the desired output from the list of available outputs and press Airzone




7. Continue with the configuration of your thermostat following the indications displayed in the screen.

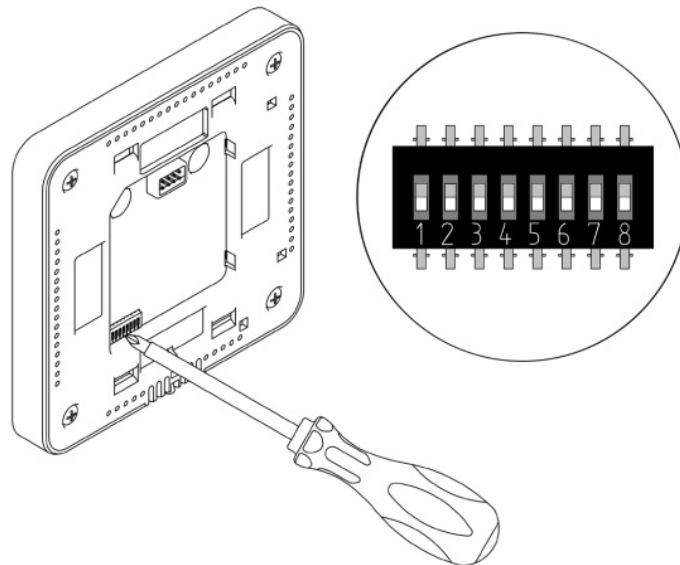
AIRZONE LITE

Wired Lite Thermostat: The association will be performed automatically.

- Pull down all the microswitch and open the radio channel of the main control board. Press the button  to reset the thermostat. To open the radio channel, press the SW1 (main control board), the LED 19 will remain steady

red for 15 minutes.

- The LED  will blink green twice when the reset process is completed, then, pull up the microswitch associated to the zone's number to associate.
- If required, select other control outputs associated to the zone. The zone address will be the one with the lowest value.




Frequently Asked Questions (FAQ)




Q: Where can I find more information about the product?

A: For further information about our products, visit our website at myzone.airzone.es.

Documents / Resources

	AIRZONE EASYZONE EZ8 Main Control Board Replacement [pdf] User Manual EASYZONE EZ8 Main Control Board Replacement, EASYZONE EZ8, Main Control Board Replacement, Control Board Replacement, Board Replacement, Replacement
---	--

References

-  [Airzone | Leader in soluzioni di controllo HVAC](#)
-  [Myzone - Mi Airzone](#)
-  [Myzone - Meu Airzone](#)
- [User Manual](#)

Manuals+. Privacy Policy

This website is an independent publication and is neither affiliated with nor endorsed by any of the trademark owners. The "Bluetooth®" word mark and logos are registered trademarks owned by Bluetooth SIG, Inc. The "Wi-Fi®" word mark and logos are registered trademarks owned by the Wi-Fi Alliance. Any use of these marks on this website does not imply any affiliation with or endorsement.