

AIRZONE AZCE8CM1DRY Dehumidifier Control Module



# AIRZONE AZCE8CM1DRY Dehumidifier Control Module User Manual

[Home](#) » [AIRZONE](#) » AIRZONE AZCE8CM1DRY Dehumidifier Control Module User Manual 

## Contents

- [1 AIRZONE AZCE8CM1DRY Dehumidifier Control Module](#)
- [2 Product Information](#)
- [3 Product Usage Instructions](#)
- [4 FAQs](#)
- [5 CONTROL MODULE](#)
- [6 TECHNICAL SPECS](#)
- [7 DEVICE ELEMENTS](#)
- [8 ASSEMBLY](#)
- [9 CONNECTION](#)
- [10 Documents / Resources](#)
  - [10.1 References](#)



**AIRZONE AZCE8CM1DRY Dehumidifier Control Module**



## Product Information

- **Specifications**

- **Voltage:** 110/230 Vac
- **Current:** 250 mA
- **Frequency:** 50/60 Hz
- **Power Consumption:** 1.2 W (110 Vac), 1.85 W (230 Vac)
- **Communication:** CAN bus
- **Cable Type:** Shielded twisted pair
- **Cable Specifications:** 2 x 0.22 + 2 x 0.5 mm<sup>2</sup>
- **Max Voltage Rating:** 250 Vac, 30 Vdc
- **Max Current Rating:** 12 A (250 Vac), 12 A (24 Vdc), 5 A (30 Vdc), 3 A (30 Vdc)
- **Protection Rating:** IP 21
- **Weight:** 180 g

## Product Usage Instructions

- **Device Elements**

- **The dehumidifier control module includes various device elements:**
  - **Description:** Provides information about the device.
  - **Meaning:** Indicates the significance of different states.
  - **State:** Represents the current status of the device.

- **Device Reboot**

- **To reboot the device:**
  - Hold the reset button for 10 seconds.
  - Observe the LED indicators for the reboot status.

- **Assembly**

- The dehumidifier control module is mounted on a DIN rail for easy installation.

- **Connection**

- Ensure proper connections are made as per the wiring diagram provided with the module.

## FAQs

- **How do I reset the device?**
  - To reset the device, hold the reset button for 10 seconds.
- **What should I do if the LED indicators show a blinking red light?**
  - If the LED indicators show a blinking red light, it may indicate a specific error. Refer to the user manual for troubleshooting steps.
- **Can I use this control module for both cooling and heating installations?**
  - Yes, this dehumidifier control module is designed for underfloor radiant installations that support both cooling and heating functionalities.

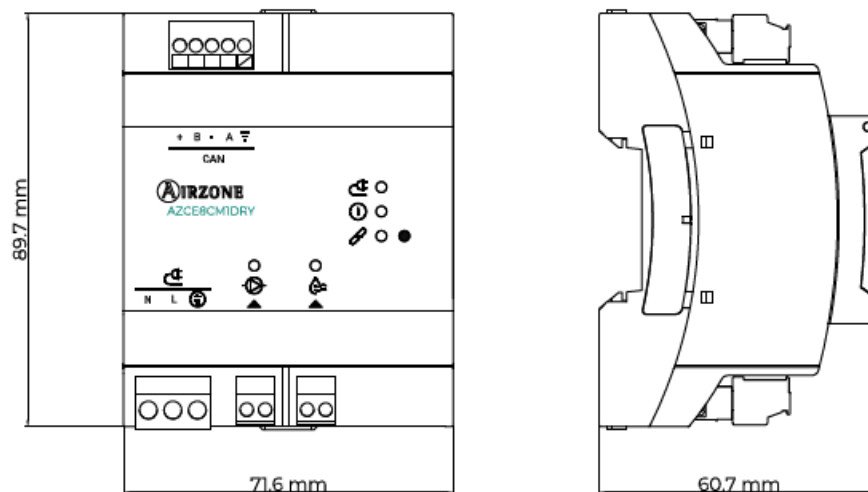
## CONTROL MODULE

### AIRLINE DEHUMIDIFIER CONTROL MODULE

- Dehumidifier control module for underfloor radiant (cooling and heating) installations.
- Externally power supplied at 110/230 Vac and wired communications.
- Mounted on DIN rail.

#### Functionalities:

- It has a relay to control the fan On/Off.
- It has a relay to control the pump On/Off.
- For further information about our products, go to [airzonecontrol.com](https://airzonecontrol.com).

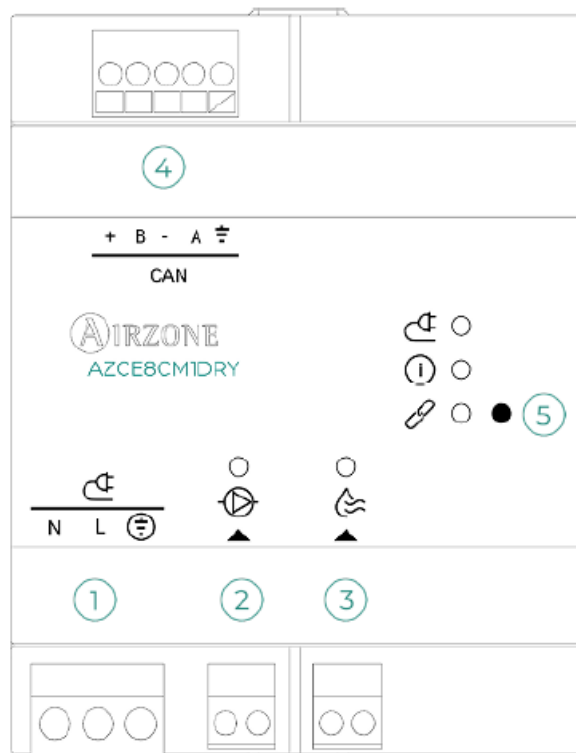


## TECHNICAL SPECS

Alimentación y consumo / Power supply and consumption / Alimentação e consumo	
V max	110/230 Vac
I max	250 mA
Frecuencia / Frequency / Frequência	50/60 Hz
Consumo Stand-by Stand-by consumption Consumo em Stand-by	1.2 W (110 Vac) 1.85 W (230 Vac)
Protección sobre corriente módulo Module over-current protection Proteção sobrecorrente módulo	250 mA
Bus CAN / CAN bus / Barramento CAN	
Cable apantallado y trenzado Shielded twisted pair Cabo blindado e trançado	2 x 0.22 + 2 x 0.5 mm <sup>2</sup>
Relé bomba / Pump relay / Relé bomba	
Nº de salidas / N° outputs / N° de saídas	1
V max	250 Vac 24 Vdc
I max	12 A (250 Vac) 12 A (24 Vdc)
Relé ventilador / Fan relay / Relé ventilador	
Nº de salidas / N° outputs / N° de saídas	1
V max	250 Vac 30 Vdc
I max	5 A (250 Vac) 3 A (30 Vdc)
Temperaturas operativas / Operating temperatures / Temperatura de operação	
Almacenaje / Storage / Armazenamento	- 20 ... 70 °C
Funcionamiento / Operation / Funcionamento	0 ... 50 °C
Aspectos mecánicos / Mechanical aspects / Aspectos mecânicos	
Grado de protección / Protection class / Grau de proteção	IP 21
Peso / Weight / Peso	180 g

## DEVICE ELEMENTS

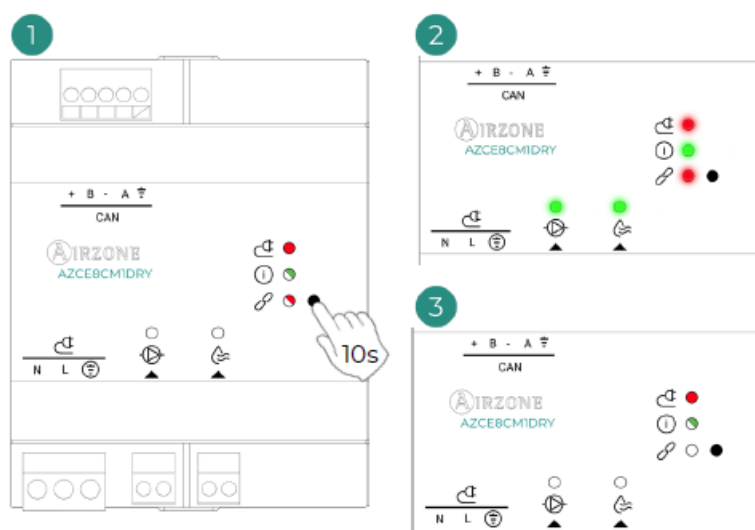
Nº	Description
1	Power supply
2	Pump control relay
3	Fan control relay
4	CAN connection bus
5	Device reboot



## SELF-DIAGNOSIS

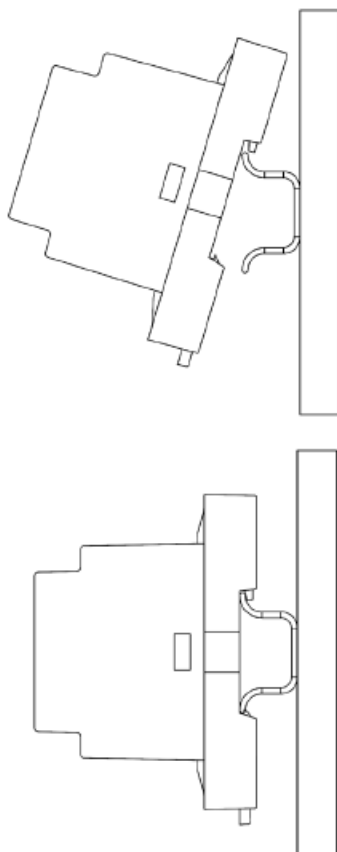
Nº	Significado / Meaning / Significado		
	Alimentación Power supply Alimentação	Fijo Steady Fixo	Rojo Red Vermelho
	Estado / State / Estado	Parpadeo Blinking Pisca	Verde Green Verde

## DEVICE REBOOT

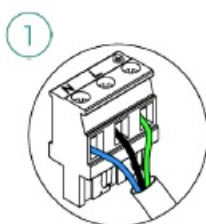


## ASSEMBLY

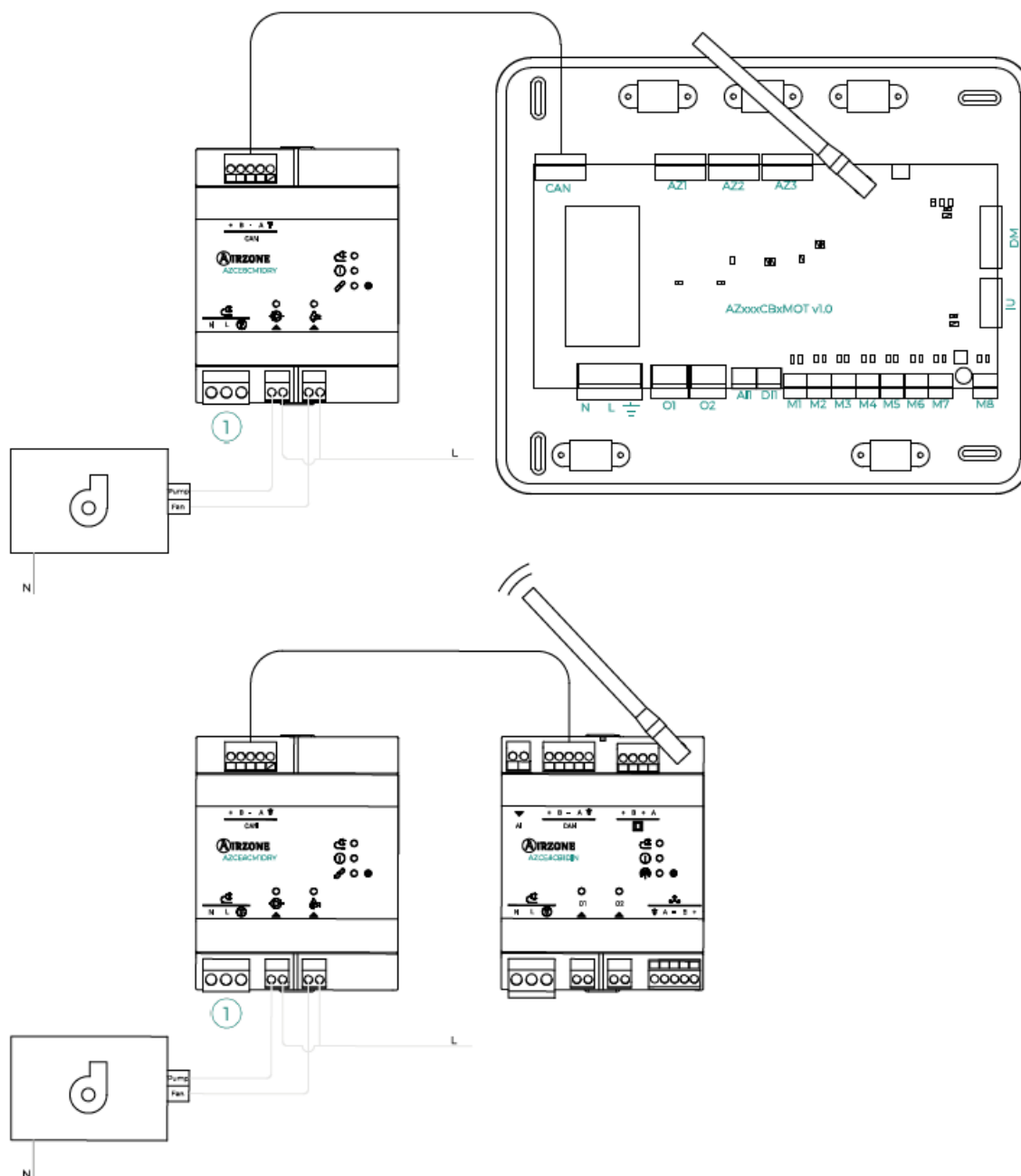
To take the module away, pull the reed down to release it.



## CONNECTION



N	Neutro   Neutral   Neutre   Neutro   Neutro   Neutraleiter
L	Fase   Phase   Phase   Fase   Fase   Phase
	Tierra   Ground   Terre   Terra   Terra   Schutzleiter



## Documents / Resources

	<p><b><a href="#">AIRZONE AZCE8CM1DRY Dehumidifier Control Module</a> [pdf] User Manual</b>            AZCE8CM1DRY Dehumidifier Control Module, AZCE8CM1DRY, Dehumidifier Control Module, Control Module, Module</p>
--	--

## References

- [User Manual](#)

## **Manuals+. Privacy Policy**

This website is an independent publication and is neither affiliated with nor endorsed by any of the trademark owners. The "Bluetooth®" word mark and logos are registered trademarks owned by Bluetooth SIG, Inc. The "Wi-Fi®" word mark and logos are registered trademarks owned by the Wi-Fi Alliance. Any use of these marks on this website does not imply any affiliation with or endorsement.