
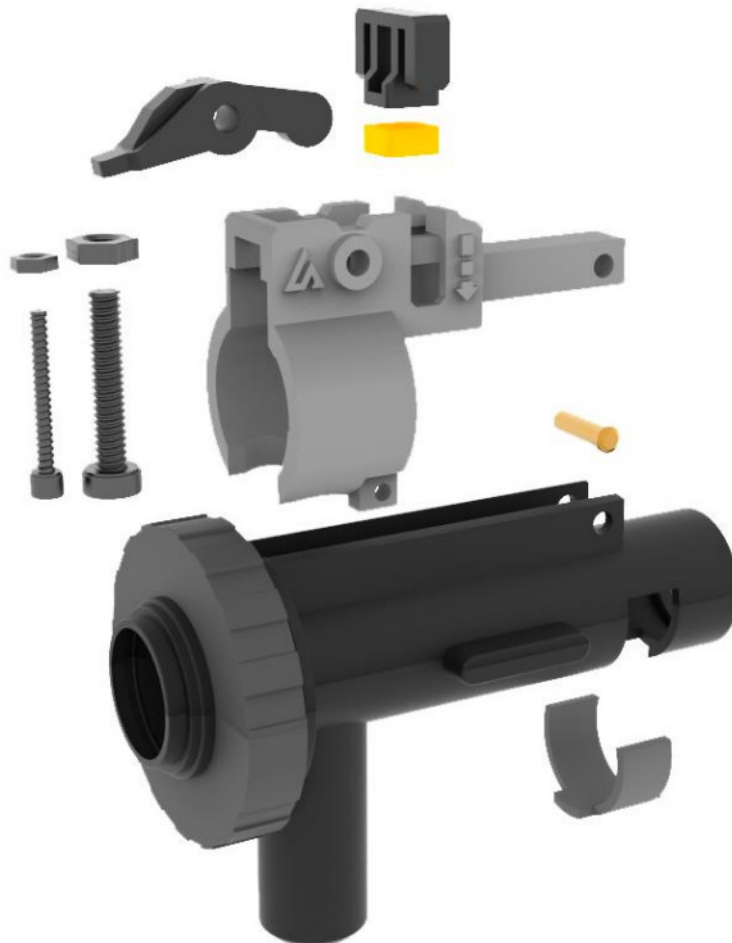




Airtech Studios MOD2 Tdc Rotary Convertor Kit Installation Guide

[Home](#) » [Airtech Studios](#) » Airtech Studios MOD2 Tdc Rotary Convertor Kit Installation Guide 



Airtech TDC Rotary Convertor Kit:
KWA QRF MOD1 Series Rotary Chamber Upgrade.

www.airtechstudios.com

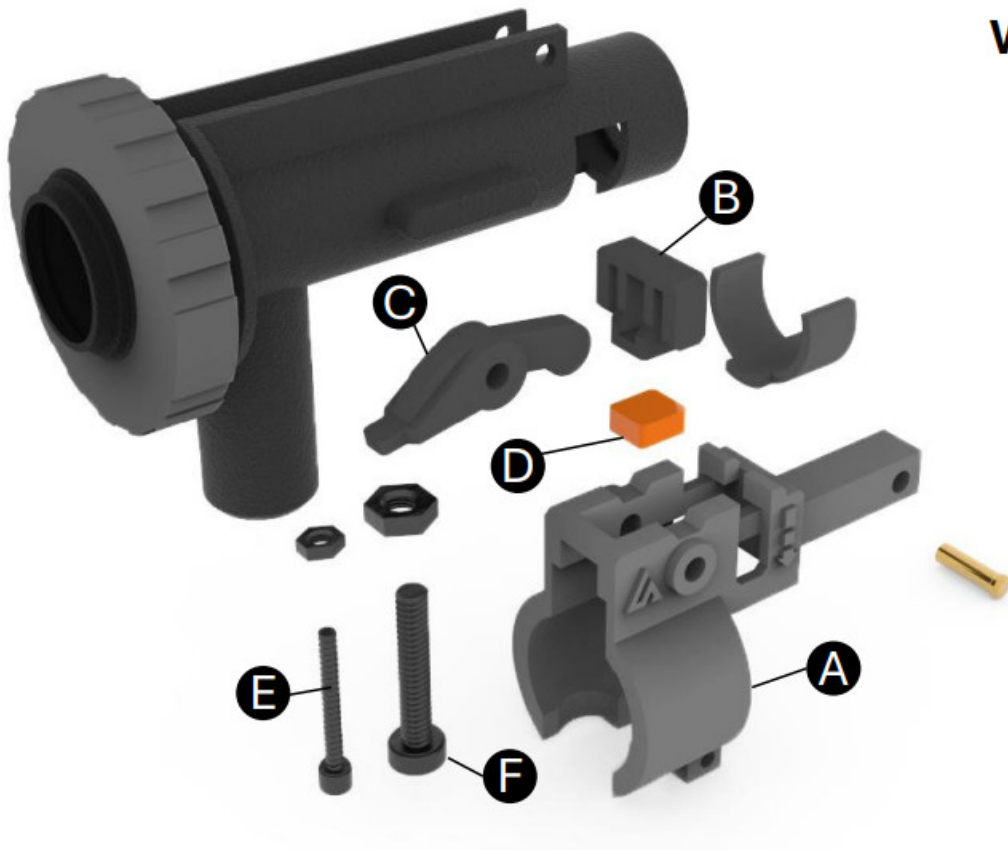
Contents

- 1 Preparation
- 2 KWA QRF Disassembly
- 3 Documents / Resources
 - 3.1 References

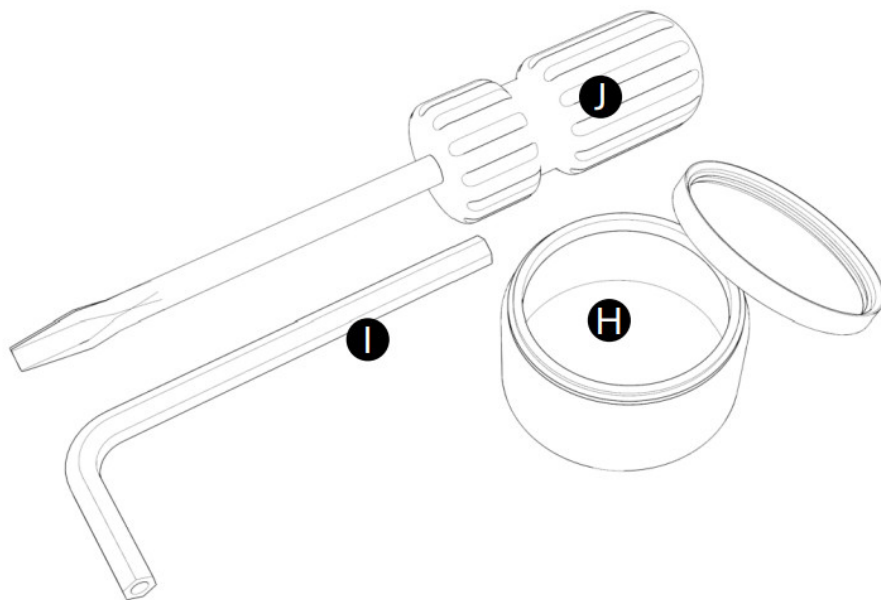
Preparation

Airtech TDC Rotary Convertor Kit:
KWA QRF MOD1 Series Rotary Chamber Upgrade.

What is included?



- A. TDC Bracket
- B. TDC Trolley
- C. Hop Adjustment Arm
- D. M-nub
- E. M1.2 Cross Screw and Nut
- F. M2 Bolt Screw and Nut



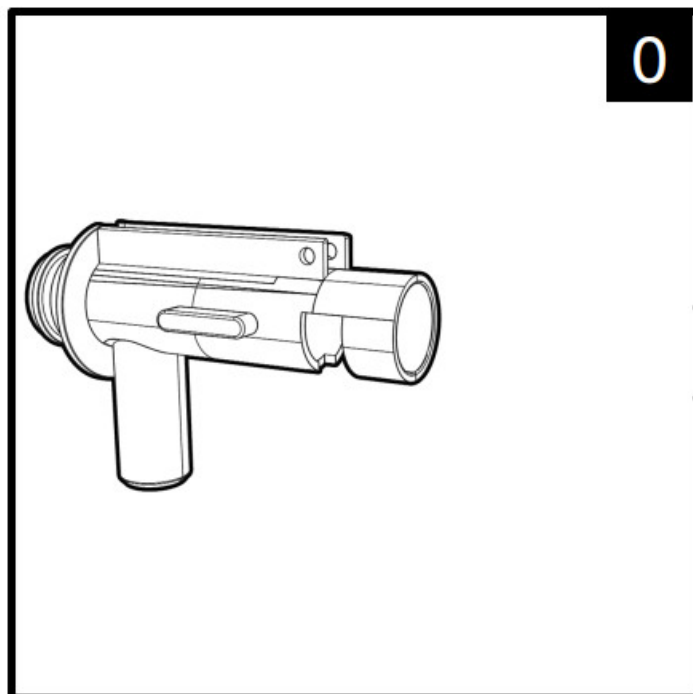
- H. Airsoft Silicone Grease
- I. M2 Allen Key
- J. M1.2 Cross Screwdriver

KWA QRF Disassembly

1. Remove hop up chamber unit/ Inner barrel from the KWA QRF Gun Model
2. Remove all the components of the hop up unit.

0. Start by removing the hop-up chamber from the rifle.

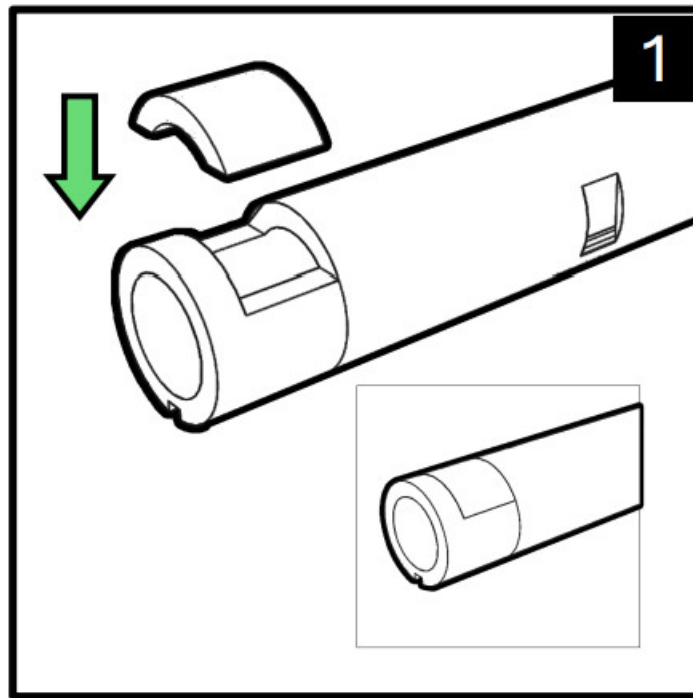
Strip down all the components so that it I only the hop up chamber that remains. Strip down all the components of the hop up unit until on the chamber remains.



1. Install your chosen R-hop patch into the inner barrel –

if you have pre-installed R-hop barrel already, you can skip this step. Flat-hop and normal bucking's will also function.

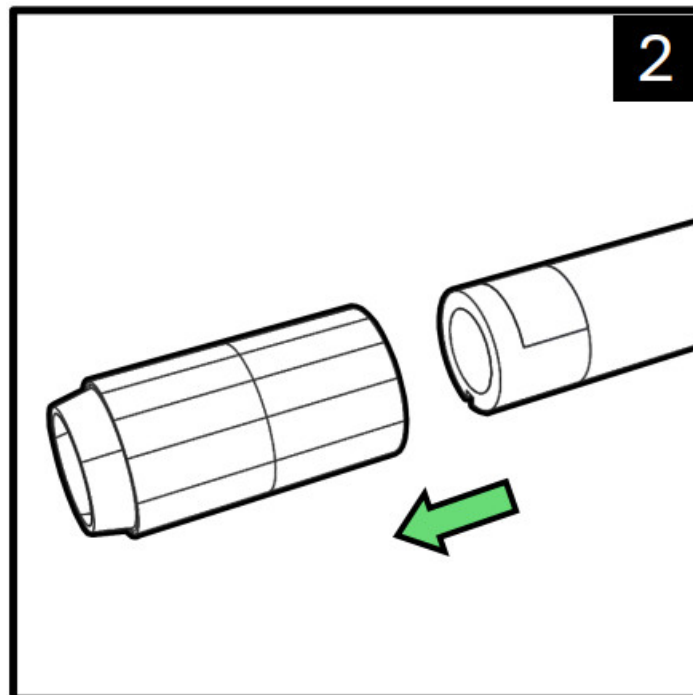
For R-hop patches we recommended brands like Psionic, Elvish and Silent Sniper. Drop-in buckings, including Maple leaf macaroon and Tru-hop can be used too.



2. Insert the inner barrel into the bucking.

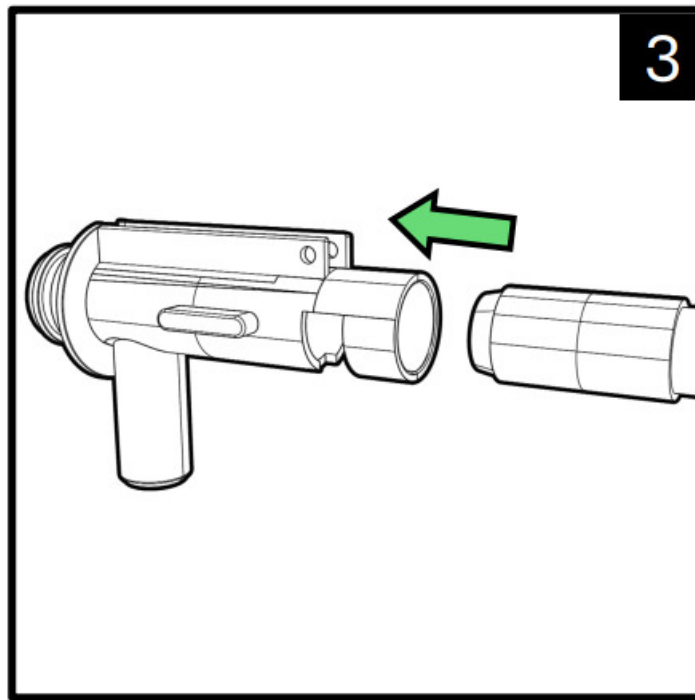
R-HOP Patch: Ensure that it is a mound less bucking type – you can modify yourself from a stock bucking.

R-Hop Buckings: Brands like Maple Leaf Macaroon, Truhop or TNT have R-hop already installed. Simple insert the inner barrel into the bucking.



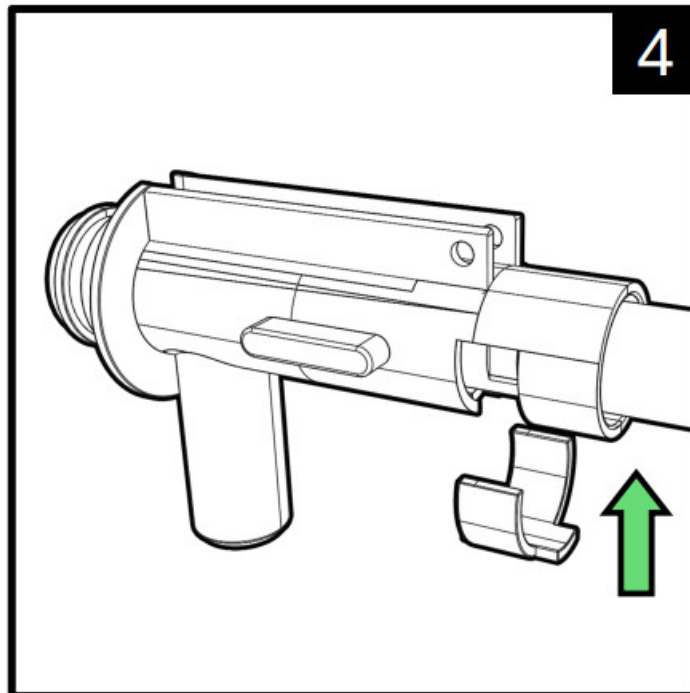
3. First insert the inner barrel/ bucking into the hop-up chamber.

Use some silicone grease on the bucking to prevent the rubber from getting caught or if its too tight.



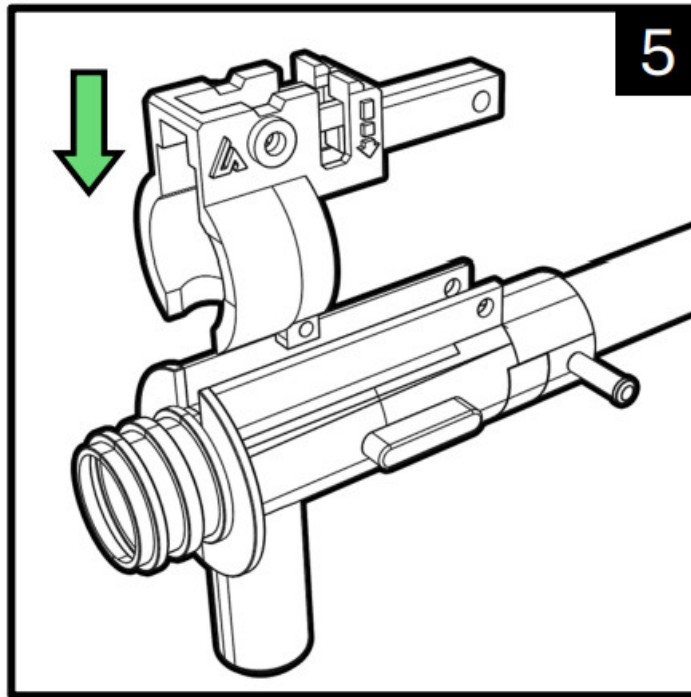
4. C-Clip Centering.

Once the C-Clip locks into place, it will latch onto the inner barrel to keep it centred. Ensure this is snug tight and locked to prevent any potential swerving when firing later on.



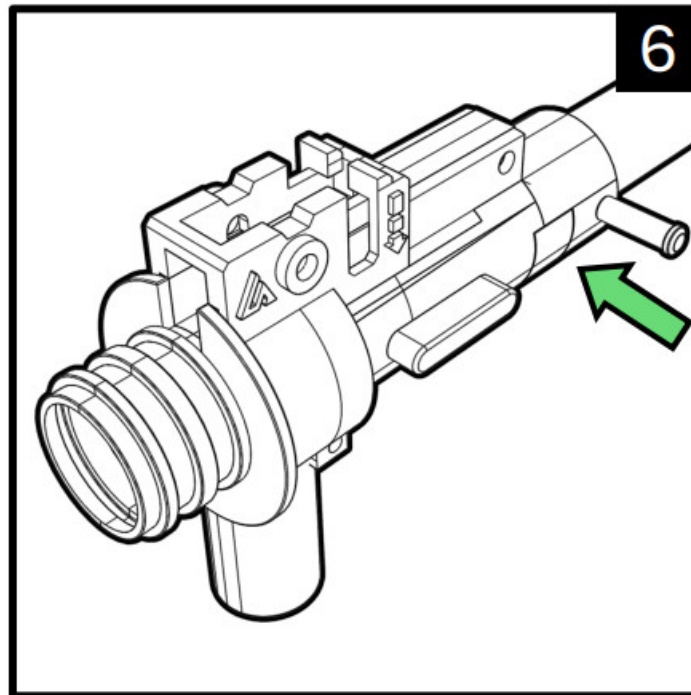
5. Installing the back bracket unit

Align the bracket from the top and install it on to the KWA rotary chamber. It will snap into place



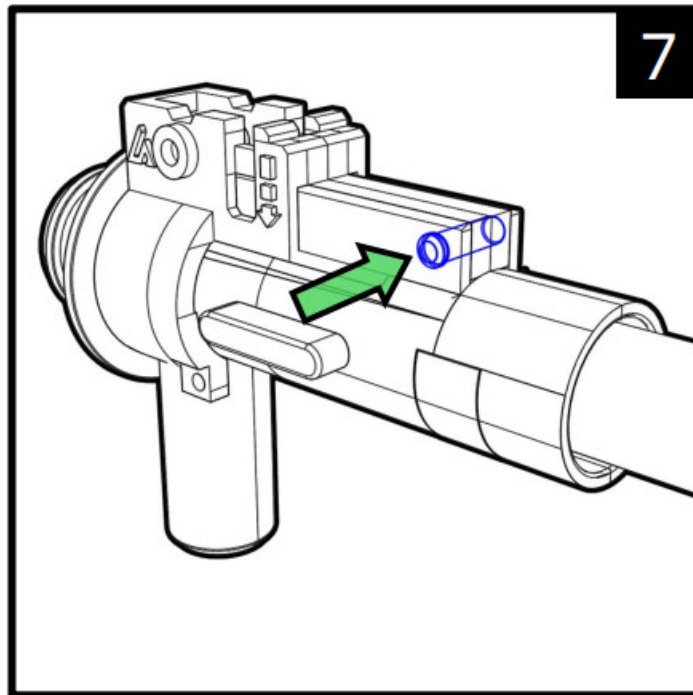
6. Install Locking Pin

Take the standard KWA locking pin and pass it through the hop up chamber and Airtech bracket.



7. Demonstration of placement Pin

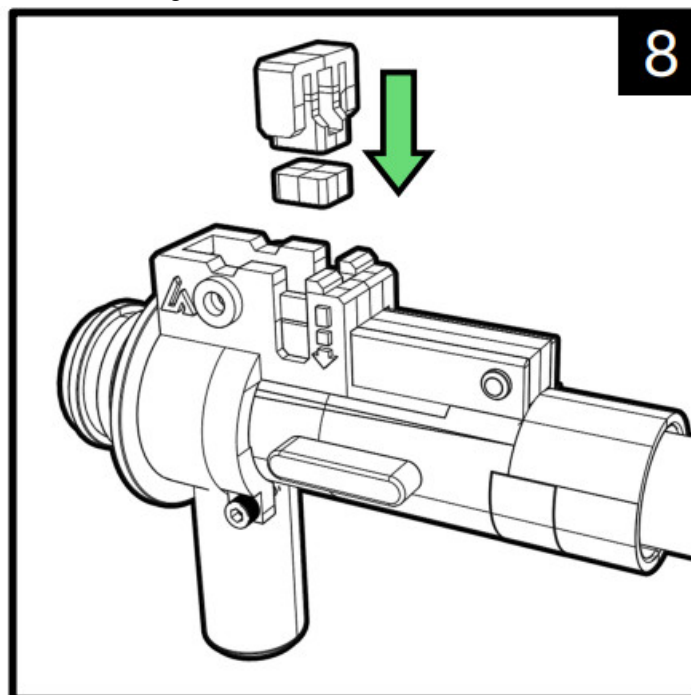
Ensure the pin passes fully through to ensure it locks properly.



8. Installed Trolley and M-nub

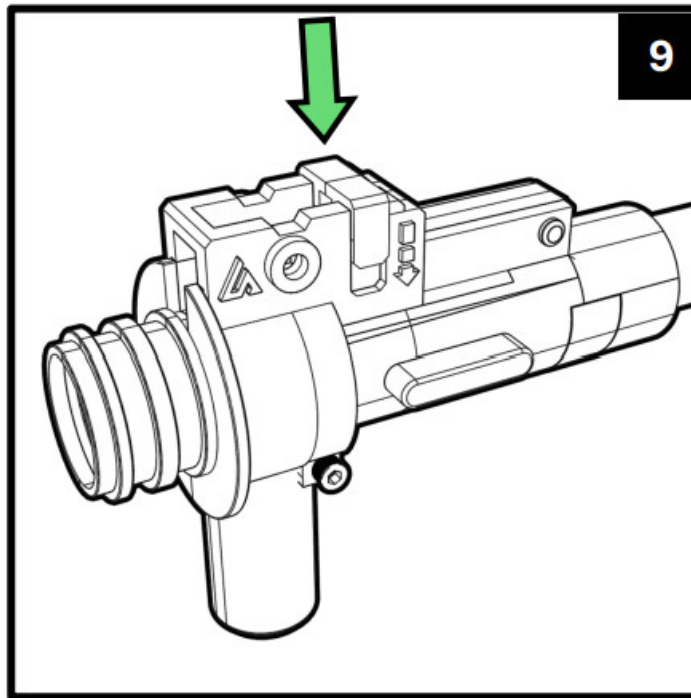
Remove the 3M adhesive stick from the M-nub and also apply some silicone grease on the foot of the M-nub and install into the hop up window inside the chamber.

Next, install the Trolley. The foot of the trolley will be connected to the top of the M-nub. Apply some grease on the foot of the nub that will contact the bucking below.



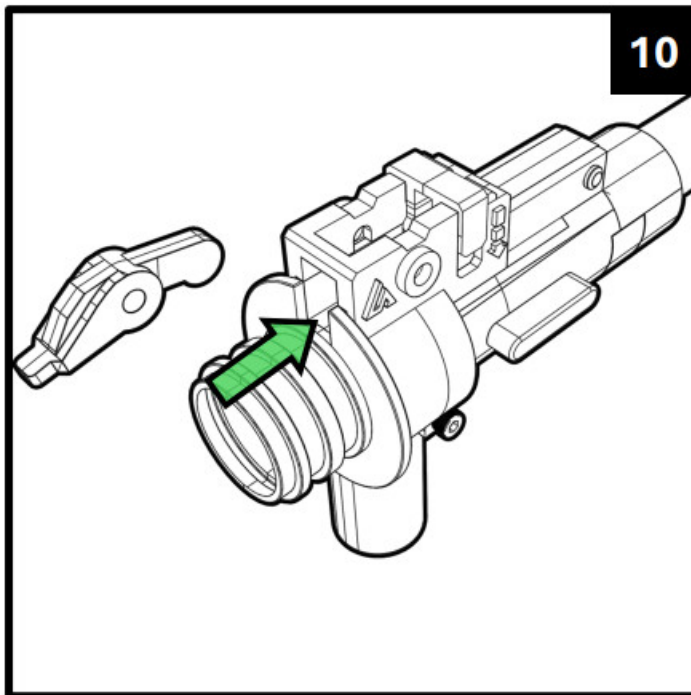
9. Trolley Free Adjustment

Press the Trolley down to see if its easy for it to freely move up and down. Apply silicone grease at the areas where plastics touch.



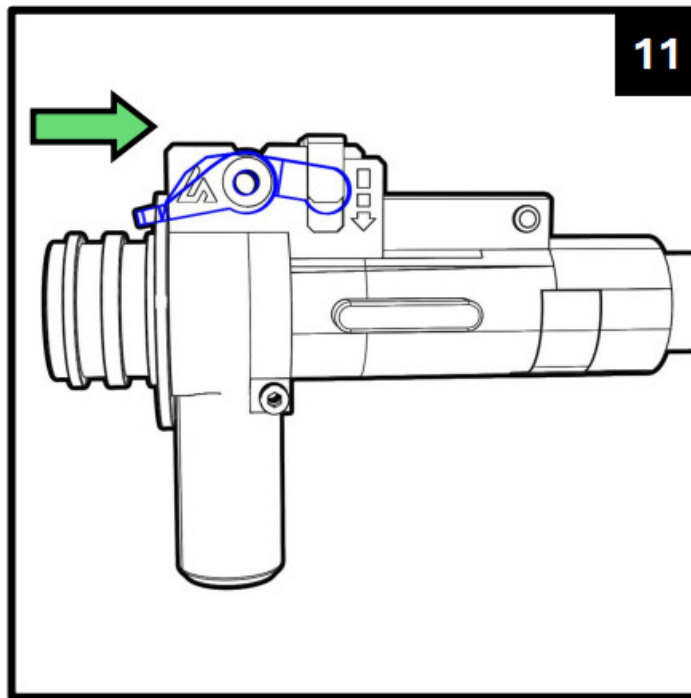
10. Installing the hop up arm.

Take the arm and install it via the back of the hop up chamber. The front of the arm will pass through the mid section of the Trolley.



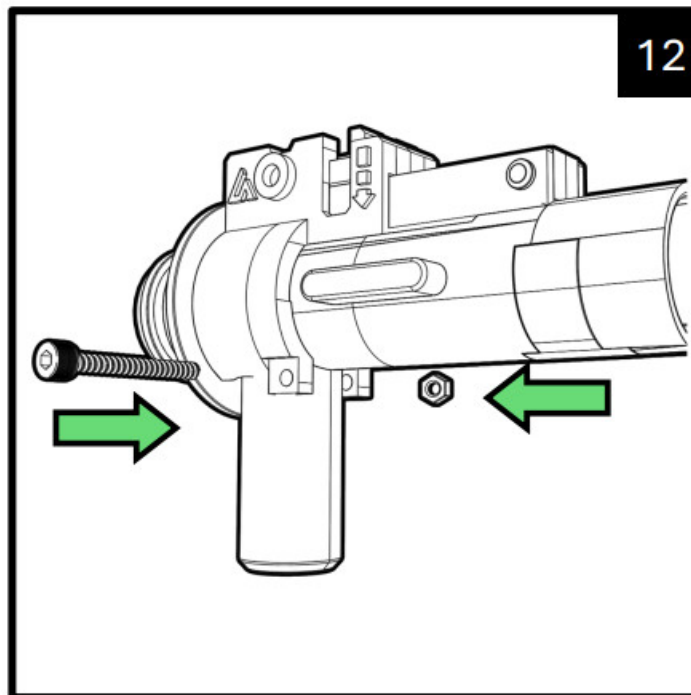
11. Pin Lock alignment

Make sure the pin holes align perfectly with the hop up chambers pin holes to get ready for the next step.



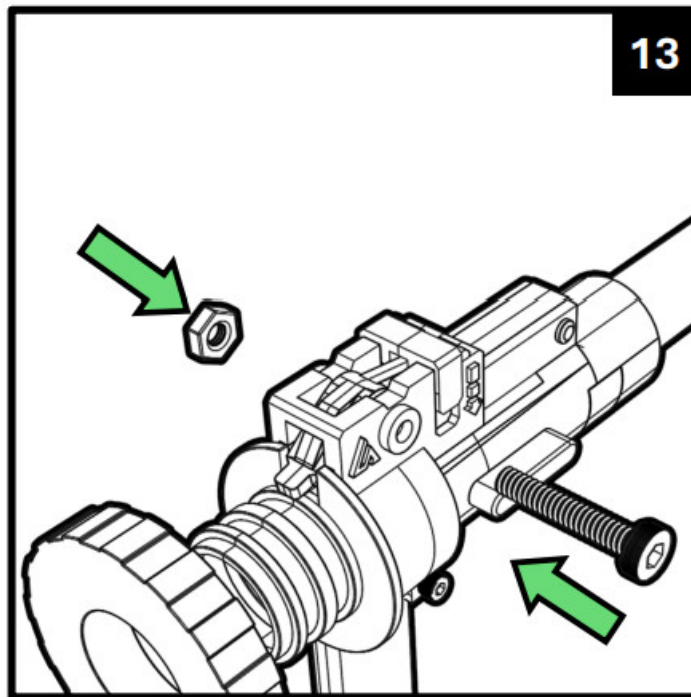
12. Installing the thin screw and nut

Make sure the locks is tight and snug but do not over do it, otherwise it could break that part of the bracket.



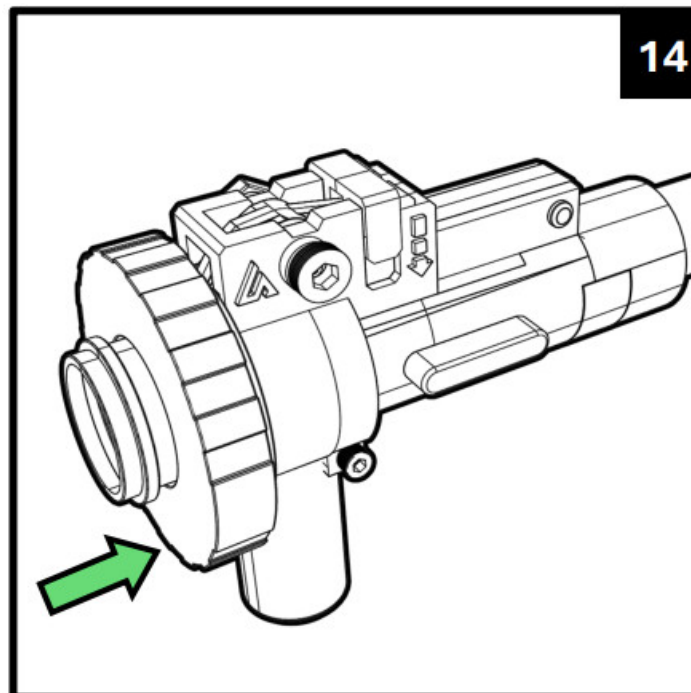
13. Screw Bolt and Nut (m2) Lock

Screw the bolt into place right through the chamber and hop adjustment arm, and lock at the other side using the M2 nut. Make sure it is tight and secure, but do not overdo it.



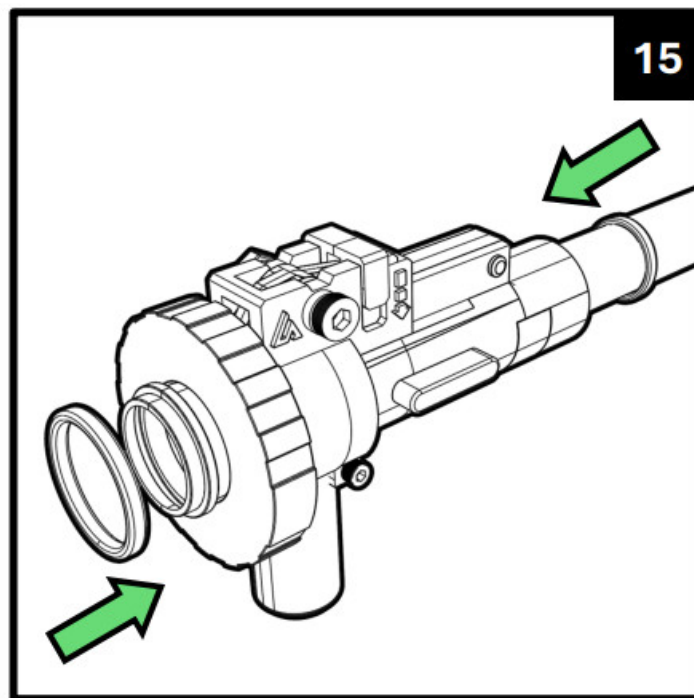
14. Installing back the hop adjustment wheel.

This is original wheel from the hop up unit. Install it back into the unit and latch it onto the new adjustment arm.



15. Silicone O-ring and Brass Ring instalment

Install back the original O-ring at the back of the hop up to keep the wheel in place. At the front install back the brass O-ring to center the inner barrel at the front.

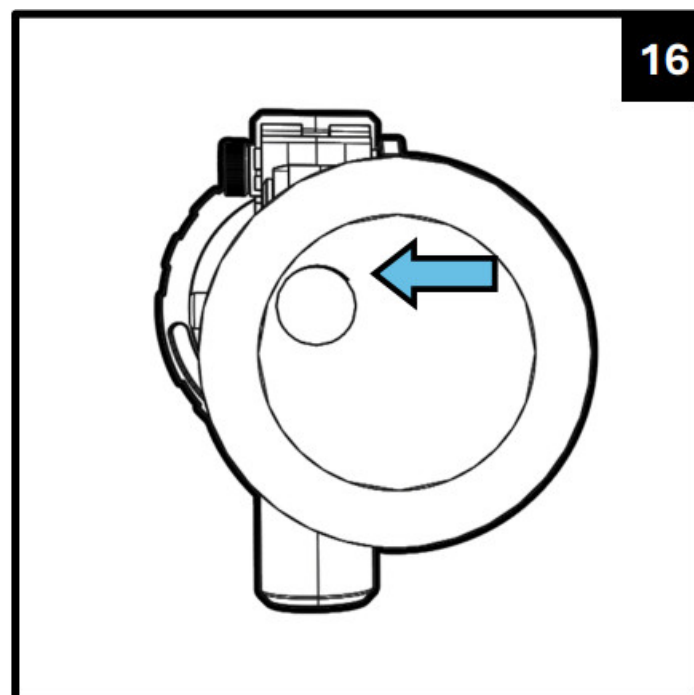


15. Checking Hop

Firstly, ensure that there are no hop applied on the system.

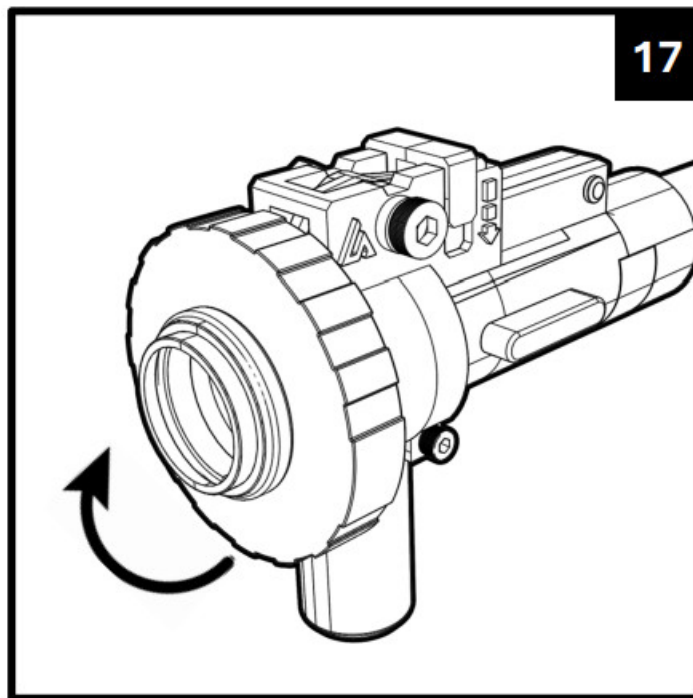
Dial the wheel to the zero position.

Next look into the inner barrel you should be able to see right through when there are no hop applied. This is ideal set up.



16. Testing hop up applied

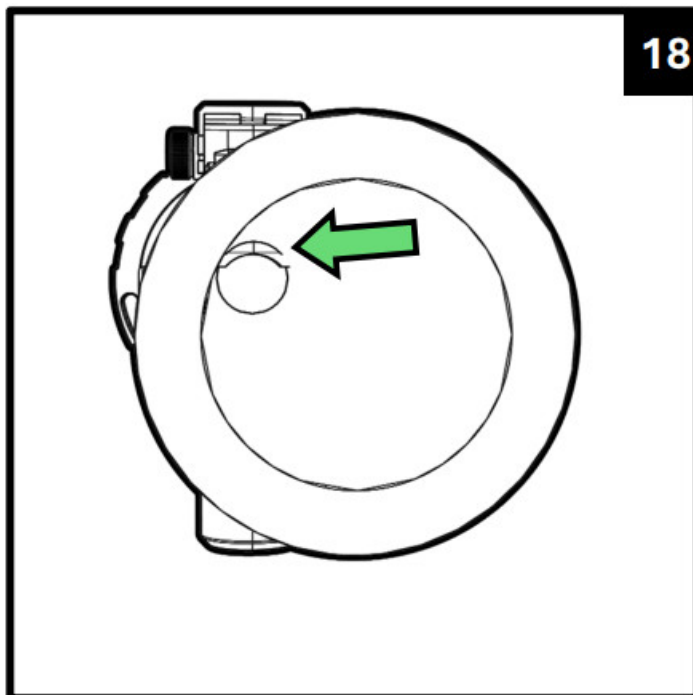
Dial the hop up wheel to apply some hop. Try ranging 50% to 100% dialling of the hop.



17

17. Hop up confirmed?



Once there are hop up applied, you should now be able to see it protruding out of the hop up window as shown in the demonstration. Ensure that it looks relatively cantered and balanced also. Once you are happy you assemble the hop back into the KWA replica rifle for test **firing**.



18

Congrats! You've full installed the kit into your hop up chamber now. Assemble it back into the KWA RIF and test shoot the rifle for you to find the best set up for your build.

If you encounter any issue during the install. Feel free to visit our website for the troubleshooting section or contract our CS team via info@airtechstudios.com

 Installation Manual Airtech Tdc Rotary Converter Kit KMS QW-10021 Series Rotary Converter Upgrade  <small>www.airtechstudios.com</small>	<p>Airtech Studios MOD2 Tdc Rotary Converter Kit [pdf] Installation Guide MOD2 Tdc Rotary Converter Kit, MOD2, Tdc Rotary Converter Kit, Rotary Converter Kit, Converter Kit, Kit</p>
--	---

References

- [🌐 Airtech Studios](#)
- [User Manual](#)

[Manuals+](#), [Privacy Policy](#)

This website is an independent publication and is neither affiliated with nor endorsed by any of the trademark owners. The "Bluetooth®" word mark and logos are registered trademarks owned by Bluetooth SIG, Inc. The "Wi-Fi®" word mark and logos are registered trademarks owned by the Wi-Fi Alliance. Any use of these marks on this website does not imply any affiliation with or endorsement.