



---

[Home](#) » [Airmax](#) » **AIRMAX AF9 Color Changing RGBW LED Light Set Owner's Manual** 

## **Contents** [ [hide](#) ]

- [1 AIRMAX AF9 Color Changing RGBW LED Light Set](#)
- [2 Specifications](#)
- [3 Product Usage Instructions](#)
- [4 Important Safety Instructions](#)
- [5 Installation](#)
- [6 RGBW Remote Control Instructions](#)
- [7 Maintenance & Winter Storage](#)
- [8 Troubleshooting](#)
- [9 Replacement Parts](#)
- [10 Warranty](#)
- [11 CONTACT](#)
- [12 FAQ](#)
- [13 Documents / Resources](#)
  - [13.1 References](#)

# **AIRMAX<sup>®</sup>**

## **AIRMAX AF9 Color Changing RGBW LED Light Set**



## Specifications

- Product Name: Airmax Color-Changing RGBW LED Light Set
- Wireless Remote Range: Up to 200ft
- Power Cord: 115v plug end (230v or 460v requires ferrules for hard wiring)
- Remote Batteries: 2 AAA Batteries (Included)

## Product Usage Instructions

- To install the Airmax Light Set on a Twin ISP Float System:
- Attach each light from a 4-light assembly to the inner rail of one Twin ISP Float Assembly with the quick disconnect pointing toward the fountain.
- Repeat for the remaining 4 light assemblies.
- Position the junction box mounting bracket over the hole on the upper pump chamber and secure it in place.
- Connect each light assembly to the junction box quick disconnects, and connect the light power cord to the junction box. Secure the power cord to the unit.
- Adjust the lights to point in the desired direction using a hex wrench or Allen wrench if needed.

- The wireless remote allows you to change color, dim/brighten lights, control flash/fade speed, and run preset programs. Basic functions include MASTER ON for all light control and ZONE ON for individual light set control.
- Disconnect ALL power before cleaning the light set lenses with a non-abrasive brush and cleaner.
- Recommended cleaner: Airmax D-Scale (#530298)

## **Important Safety Instructions**

- Under NO circumstances should anyone enter the water with the electrical equipment plugged in and/or in operation.
- WARNING – Risk of electric shock – This light set is supplied with a grounding conductor and grounding-type attachment plug.
- To reduce the risk of electric shock, be certain that it is connected only to a properly grounded, grounding-type receptacle. This light set has not been approved for use in swimming pool areas.
- ALWAYS use a GFCI-protected receptacle or breaker.
- NEVER lift or drag the light set by the power cord.
- During freezing temperatures, remove and store inside.
- If installing from a boat or raft, ALWAYS wear a Coast Guard-approved personal flotation device.
- ALWAYS use a qualified electrician when installing a power source next to your pond.



## Installation

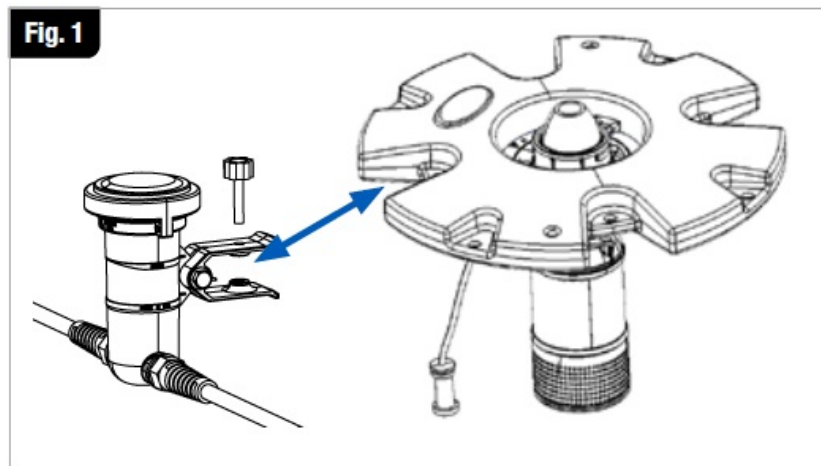
### Installing the Airmax LED Light Set on a Round Float. (Fig. 1)

1. To attach the light, clip the light into the inner mounting positions on the float and use the vertical tension screw to secure the light in place. Continue until all lights are attached.

**NOTE:** Both inner and outer mounting positions will be used if installing an 8-light set on the 34" round float.

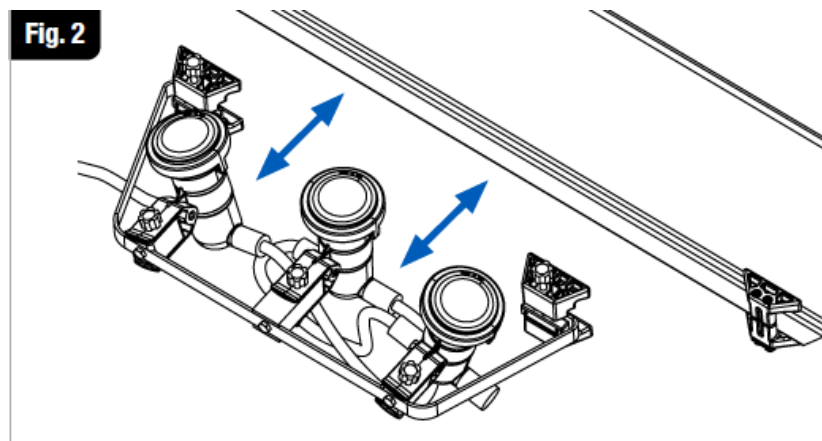
2. After attaching the Airmax LED Light Set to the float, connect the quick disconnect end to the power cord.
3. Attach the light set power cord strain relief onto one of the loops underneath the float mount ring.

4. Adjust the lights to point in the desired direction.
5. Connect the light power cord to the control panel or other GFCI outlet.

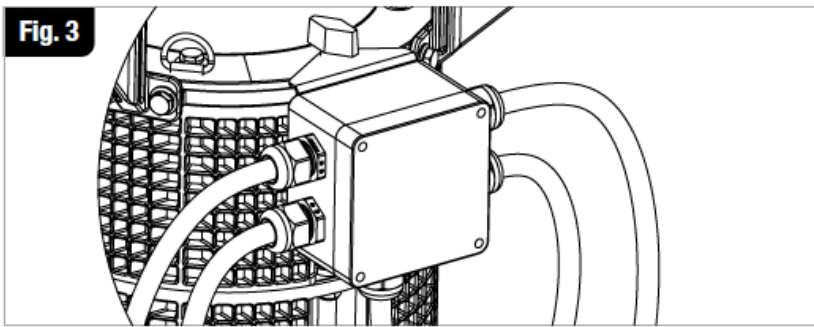


### Installing the Airmax LED Light Set on an ISP Float System

1. First, attach one light set mounting bracket on the left side rail of one float (the AIRMAX logo on the float will be facing you), making sure that the mounting bracket is positioned between the two float support clamps. Secure the light set mounting bracket with the two vertical tension screws.
2. Next, install a 3-light set on the holders (with the quick disconnect pointing toward the fountain) by clipping the light clamp over the holder and securing in place with a vertical tension screw. (Fig. 2)



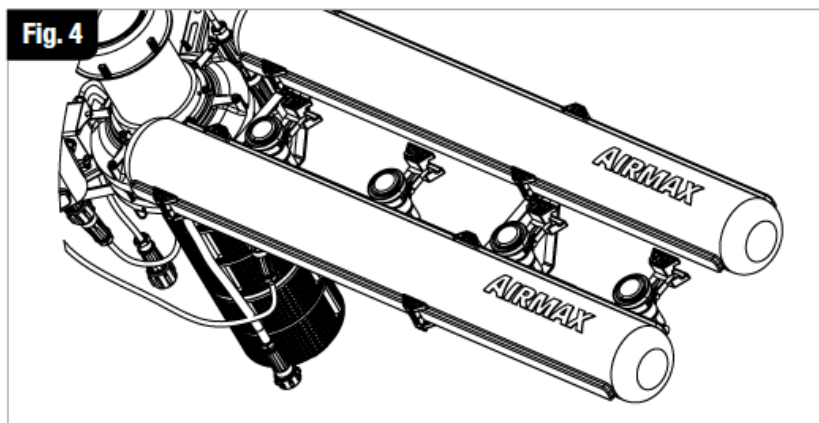
3. Repeat for each of the remaining light assemblies.
4. Install the LakeSeries Light Set Junction Box by removing one of the intake assembly T-Knobs and placing the mounting bracket over the threaded stud. Secure in place with the T-Knob. (Fig. 3)



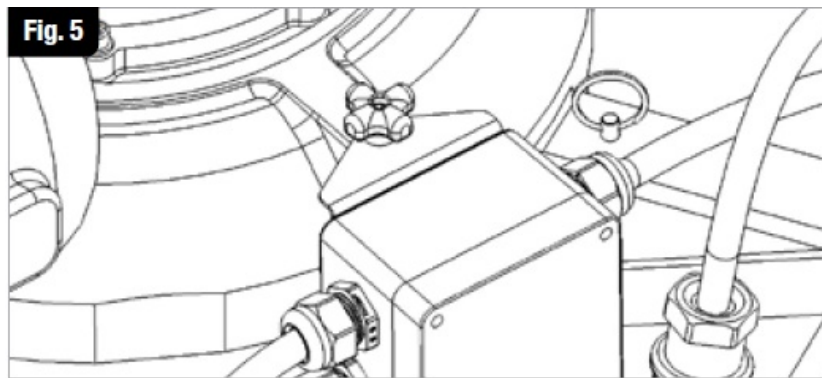
5. After completing the fountain assembly procedure, connect each light assembly to the junction box quick disconnects, and connect the light power cord to the junction box. Secure the power cord to the unit by clipping the strain relief to the upper D-ring using the supplied carabiner.

### Installing the Airmax Light Set on a Twin ISP Float System

1. First, attach each light from a 4-light assembly to the inner rail of one Twin ISP Float Assembly with the quick disconnect pointing toward the fountain (the Airmax logo will face the lights). Lights should be evenly spaced, beginning after the first float support clamp and working out toward the end of the float. (Fig. 4)



2. Repeat for the remaining 4 light assemblies.
3. Rotate the thumb screw counterclockwise to remove it from the upper pump chamber, then position the junction box mounting bracket over the hole and reinstall the thumb screw to secure the junction box in place. Hand tighten ONLY. (Fig. 5)
4. After completing the fountain assembly procedure, connect each light assembly to the junction box quick disconnects and connect the light power cord to the junction box. Secure the power cord to the unit by clipping the strain relief to one of the D-Rings on the upper pump housing using the supplied carabiner.
5. Adjust the lights to point in the desired direction. Use either a 7/16" hex wrench or a 5/32" Allen wrench to tighten the pivot points if needed. Do not over tighten.



## NOTE

Light power cords come with a 115V plug end installed. When using with a 230V or 460V fountain, the plug end must be removed and the supplied ferrules installed for proper hard wiring.

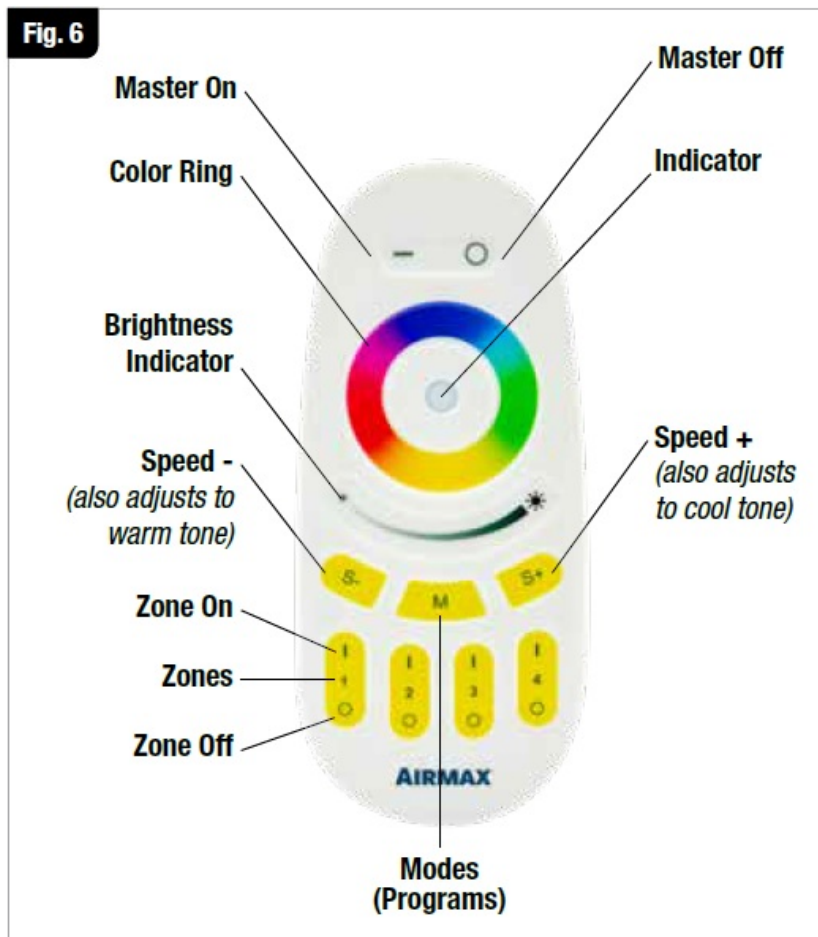
## RGBW Remote Control Instructions

- The Airmax Color-Changing RGBW LED Light Set is run by a wireless remote with a range of up to 200ft.
- The wireless remote allows you to change the color, dim/brighten the lights, control flash/fade speed, and run up to 9 preset programs.
- Your wireless remote has already been paired with your light set on Zone 1. Requires: 2 AAA Batteries(Included).

## Basic Control Functions

- Press and hold Master ON or ZONE ON for several seconds to turn all lights to white mode. (Fig. 6)
- Touch the color ring to adjust the lights to any color.
- While in white or solid color mode, use the speed buttons to change the tone from cool to warm white or vibrant to pastel colors.
- Change the brightness by using the brightness slider.
- Adjust flash/fade speed for any preset program using the speed buttons.
- If controlling light sets for multiple fountains (up to 4) on a single remote, follow the pairing procedure to add light sets to zones 1-4. MASTER ON will allow control of ALL light sets simultaneously. ZONE ON buttons will allow individual control of EACH light set.





## Preset Programs/Modes

- Press the “M” Mode button to scroll through the pre-programmed light settings:

### Program 1 – Color Flash and Freeze Sequences

- Multiple flash and freeze sequences of all colors.

### Program 2 – Color Fades

- Red, orange, yellow, green, blue, and pink, one after the other.

### Program 3 – Color Fades

- Green, blue, and pink one after the other.

### Program 4 – Color Fades

- Green, blue, purple, and pink one after the other.



## **Program 5 – Color Fades**

- Red, orange, yellow, green, pink, and blue, one after the other.

## **Program 6 – Color Fades**

- Red, white, and blue one after the other.

## **Program 7 – Color Fades**

- White, pink, and blue one after the other.

## **Program 8 – Color Fades**

- White, green, blue, and red one after the other.

## **Program 9 – Color Fades**

- Blue, green, yellow, pink, red, and purple one after the other.

## **NOTE:**

Your wireless remote has already been paired for your light set on Zone 1.

In the event that your light set becomes unpaired or to link additional lights to the remote, follow the steps below.

Linking new lights to the remote control:

1. Ensure that you have new batteries in your remote and that the light set you wish to pair is within the 200' working range of the remote control. Depending on conditions, you may have to decrease the distance between the lights and the remote during the repair process.
2. Choose which zone you want to assign the lights (1 to 4)
3. Switch off the main power supply of the lights in the selected zone with the main switch or pull the plug from the socket. For digital timers, turn to MANUAL OFF.
4. Turn the timer to the ON position or plug in the lights. Once the lights illuminate, TAP the Zone ON button three times on the desired zone.
5. When the link operation is successful, the lights will flash GREEN two times then reset

to RED.

Airmax Light Set fixtures are designed to be partially out of water. Completely submerging the lights will prevent communication with the remote control.

## Maintenance & Winter Storage

### Maintenance

1. Disconnect ALL power from the fountain and lights before attempting any maintenance.
2. Periodically clean light set lenses with a non-abrasive brush and cleaner. We recommend Airmax D-Scale (#530298)

### Winter Removal & Storage

1. Remove the fountain and lights from the pond before ice begins to form.
2. This is the perfect time to clean or power wash any debris on the unit before storing.
3. It is recommended to disconnect the lights from the fountain and store in an area above freezing temperatures.

### Spring Installation Inspection

1. Before reinstalling the fountain and lights in the spring, check the condition of the power cord and quick disconnect.  
Replace any O-rings that may be worn.

## Troubleshooting

IF ALL LIGHTS OFF	
ISSUE	CORRECTION
GFCI tripped	Reset GFCI / Check for water in power cord quick disconnect

Power cord cut	Repair or replace the power cord
Water in fixtures	Contact Airmax or a local dealer for repair/replacement
The voltage is not high enough for starting	Make sure the voltage at the receptacle is 120V +-5%
Timer not running	Verify the timer is keeping time, replace the timer if not
The timer is not set to AUTO	Press the MANUAL button to move the indicator to AUTO.

#### **IF ONE OR MORE (NOT ALL) LIGHTS OFF**

<b>ISSUE</b>	<b>CORRECTION</b>
Water in fixtures	Contact Airmax or a local dealer for repair/replacement
LED bulb driver failed	
LED bulb failed	

#### **IF LIGHTS DIM**

<b>ISSUE</b>	<b>CORRECTION</b>
Voltage is not high enough for starting	Make sure the voltage at the receptacle is 120V +-5%
Lens might be dirty	Clean with a non-abrasive brush or cleaner

#### **IF ONE OR MORE (NOT ALL) LIGHTS DIM**

<b>ISSUE</b>	<b>CORRECTION</b>
--------------	-------------------

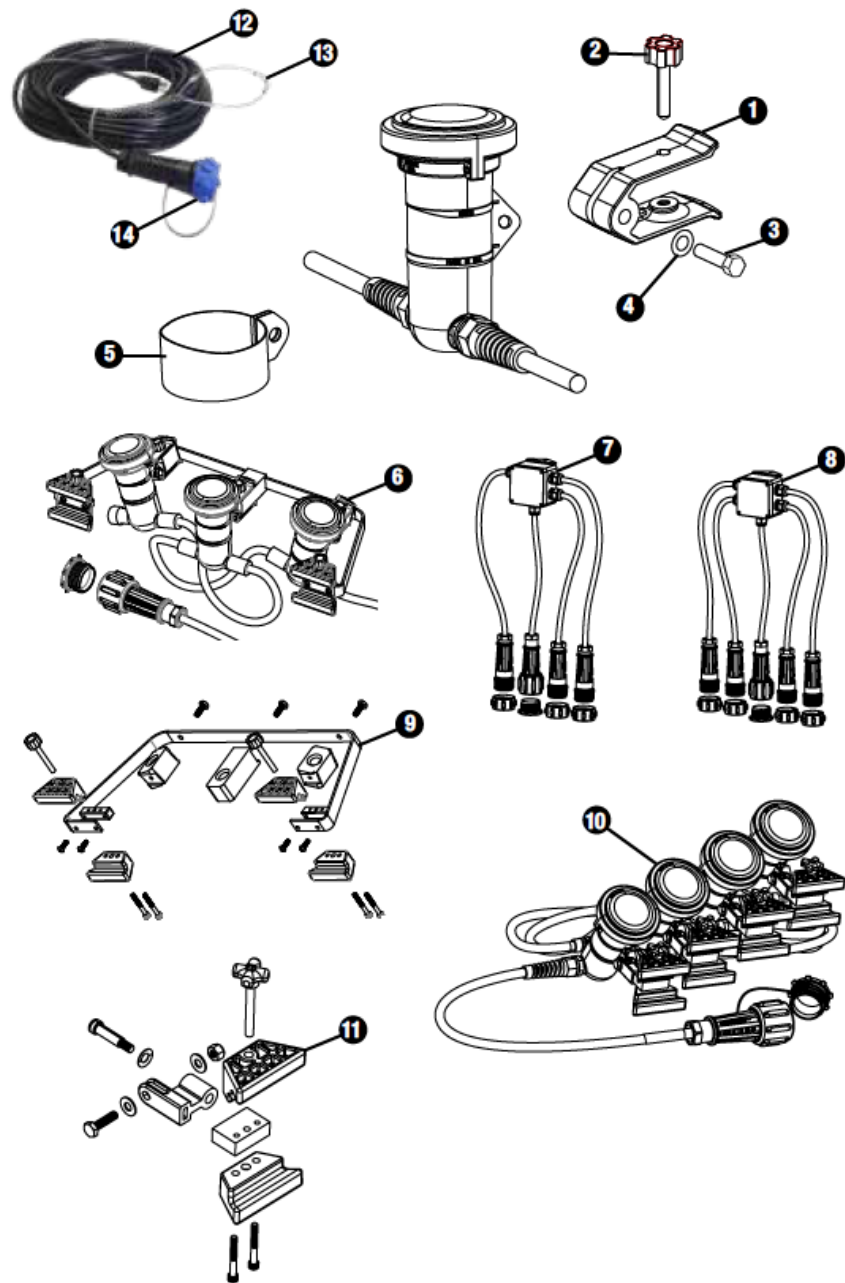
Water in fixtures	Contact Airmax or a local dealer for repair/replacement
LED bulb driver failed	Contact Airmax or a local dealer for repair/replacement
<b>IF LIGHTS FLICKER</b>	
<b>ISSUE</b>	<b>CORRECTION</b>
Water in fixtures	Contact Airmax or a local dealer for repair/replacement
Voltage is not high enough for starting	Make sure the voltage at the receptacle is 120V +/-5%
LED bulb driver failed	Contact Airmax or a local dealer for repair/replacement
<b>IF LIGHTS TURN ON AND OFF INTERMITTENTLY</b>	
<b>ISSUE</b>	<b>CORRECTION</b>
Water in fixtures	Contact Airmax or a local dealer for repair/replacement
LED bulb driver failed	Contact Airmax or a local dealer for repair/replacement

**NOTE:** Pre-programmed light modes can cause lights to dim, flicker, and fade in and out. When troubleshooting, please ensure you are in the basic ON mode by turning the unit off with the “MASTER OFF” button, then pressing and holding “MASTER ON” for several seconds to turn all lights to white mode.

## Replacement Parts

### LED Light Replacement Parts

1. 651307 Mounting Clamp
2. 651325 Tension Screw,  $\frac{1}{4}$  – 20 x 1  $\frac{1}{4}$ "
3. 651722 Bolt,  $\frac{1}{4}$  – 20 x 1  $\frac{1}{4}$ "
4. 651723 Washer,  $\frac{1}{4}$ "
5. 651308 Band Clamp
6. 653224 LakeSeries 3 Light Set Assembly
7. 653275 LakeSeries Junction Box – 3 Strand Output
8. 653276 LakeSeries Junction Box – 4 Strand Output
9. 653287 LakeSeries Light Bracket Assembly, 2-5 HP
10. 651824 LakeSeries 4 Light Set Assembly – Twin ISP Floats
11. 654173 LakeSeries Light Clamp Assembly – Twin ISP Floats
12. Power Cord Options
  - 652646 100 feet, 16/3 652669 400 feet, 16/3
  - 652647 150 feet, 16/3 651560 450 feet, 16/3
  - 652648 200 feet, 16/3 651561 500 feet, 14/3
  - 652649 250 feet, 16/3 651652 550 feet, 14/3
  - 652667 300 feet, 16/3 651563 600 feet, 14/3
  - 652668 350 feet, 16/3
13. 651060 Strain Relief (16 gauge)
14. 651357 Power Cord End Cap, Female 651163 Female End Cap, O-Ring (not shown)



## Warranty

### Airmax, Inc. Airmax LED Light Sets Limited Warranty

- Airmax, Inc. warrants to the original purchaser (the end user) of any Airmax LED Light Sets manufactured by Airmax, Inc. that any component which proves to be defective in materials or workmanship, as determined by the factory within 3 years from the original purchased date, will be repaired or replaced at no charge with a new or remanufactured part, and returned freight prepaid. The end user shall assume all the responsibility and expense for removal, packaging, and freight to ship to Airmax, Inc. to determine the warranty claim and for all reinstallation expenses.
- The warranty is void in cases where damage results from: improper installation, improper electrical connection, improper voltage, alteration, lightning, careless

handling, misuse, abuse, disassembly of the unit or failure to follow maintenance or operating instructions. Modification or repair by an unauthorized repair facility will void the warranty.

- In no case will Airmax, Inc. or its dealers accept responsibility for any costs incurred by the user during installation, removal, inspection, evaluation, repair, parts replacement, or for return freight. Nor will any liability be accepted for loss of use, loss of profits, loss of goodwill, for consequential damage, or for personal injuries to the purchaser or any person.
- In the event of problems believed to be covered under warranty, it will be necessary to notify the dealer, who will try to help resolve the problem and who may contact the factory for additional assistance. If it is concluded that there may be a defect that may be covered under warranty, it will be necessary to get a Return Material Authorization (RMA) from the dealer before shipment. Freight collect shipments will not be accepted by the factory on warranties or repairs.
- The product or part(s) must be returned freight prepaid, to the factory, as directed, and in its original packaging or in a container that will prevent damage. Parts returned under warranty and damaged during shipping will not be covered under warranty for the shipping damage. If the factory evaluation of the returned goods concludes that the failure is due to defects in materials or workmanship, the part or parts in question will be replaced under warranty with new parts, remanufactured parts, or will be repaired at the factory's option. The warranty period for all parts supplied under warranty will terminate at the end of the original product's warranty. All warranty shipments from the factory will be shipped freight prepaid.
- Warranty registration is HIGHLY recommended.
- No implied warranties of any kind are made by Airmax, Inc. for its products, and no other warranties, whether expressed or implied, including implied warranties of merchantability and fitness for a particular purpose, shall apply.
- Should an Airmax, Inc. product prove to be defective in materials or workmanship, the retail purchaser's sole remedy shall be repair or replacement of the product as expressly provided above.
- The manufacturer's warranty will begin from the dealer's original purchase date if the product is not registered. To register a product, you are required to fill out the warranty registration form at [airmaxeco.com/warranty](http://airmaxeco.com/warranty). Warranty registration must be submitted directly to Airmax within 30 days of the end-user's purchase date.




## CONTACT

- Airmax, Inc.
- 15425 Chets Way Street Armada, MI 48005
- (866) 4-AIRMAX [airmaxeco.com](http://airmaxeco.com)

## FAQ

- **Q: How do I pair additional lights to the remote control?**
  - **A:** To link new lights to the remote control, ensure new batteries are in the remote, and follow these steps:
  - Press MASTER ON to control all light sets simultaneously.
  - Use the ZONE ON buttons for individual light set control.

## Documents / Resources

	<a href="#">AIRMAX AF9 Color Changing RGBW LED Light Set [pdf]</a> Owner's Manual AF9 Color Changing RGBW LED Light Set, AF9, Color Changing RGBW LED Light Set, Changing RGBW LED Light Set, RGBW LED Light Set, LED Light Set, Light Set
---	---

## References

- [User Manual](#)

■ Airmax

◆ AF9, AF9 Color Changing RGBW LED Light Set, Airmax, Changing RGBW LED Light Set, Color Changing RGBW LED Light Set, LED Light Set, Light Set, RGBW LED Light Set

---

## Leave a comment

Your email address will not be published. Required fields are marked \*

Comment \*

Name

Email

Website

☐ Save my name, email, and website in this browser for the next time I comment.

Post Comment

Search:

e.g. whirlpool wrf535swhz

Search

[Manuals+](#) | [Upload](#) | [Deep Search](#) | [Privacy Policy](#) | [@manuals.plus](#) | [YouTube](#)

This website is an independent publication and is neither affiliated with nor endorsed by any of the trademark owners. The "Bluetooth®" word mark and logos are registered trademarks owned by Bluetooth SIG, Inc. The "Wi-Fi®" word mark and logos are registered trademarks owned by the Wi-Fi Alliance. Any use of these marks on this website does not imply any affiliation with or endorsement.