



AIRDESTIC Hyperwave Dehumidifier Instruction Manual

[Home](#) » [AIRDESTIC](#) » AIRDESTIC Hyperwave Dehumidifier Instruction Manual 

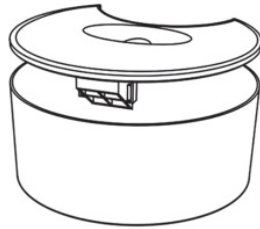


Thank you for choosing our dehumidifier. Please read this manual carefully before using the product and keep it for future reference.

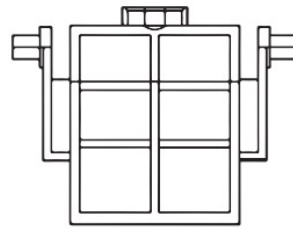
Contents

- [1 Installation](#)
- [2 Product struction chart](#)
- [3 Product parameters](#)
- [4 Cautions](#)
- [5 Documents / Resources](#)
 - [5.1 References](#)

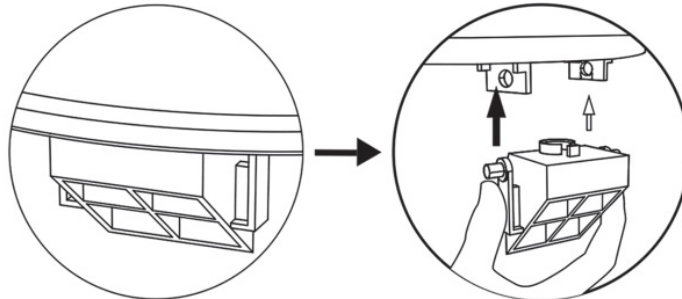
Installation



Demonstration of proper installation

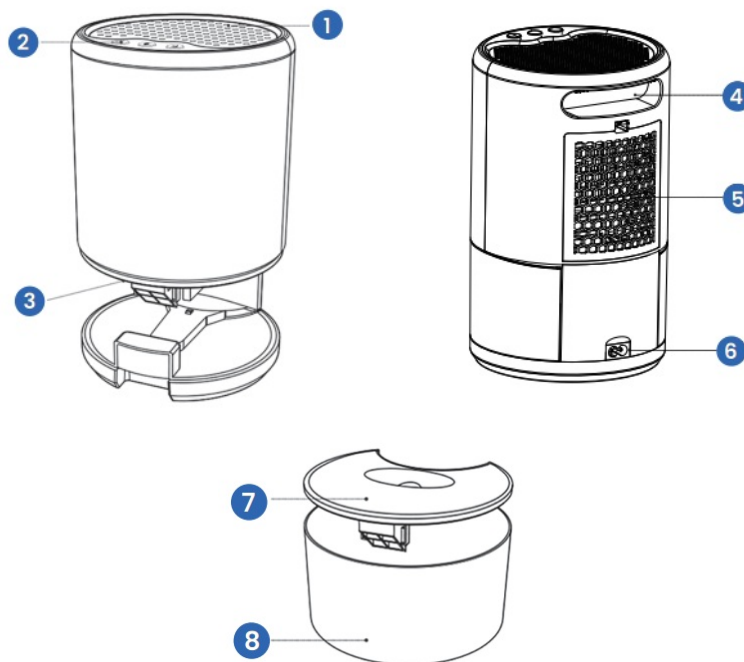


The right direction



Please install the float in the specified position of the water tank before use.

Product struction chart



1. Air Outlet
2. Power Switch
3. RGB Light/Inductor
4. Handle
5. Air Intet
6. DC Port
7. Cover of Water Tank
8. Water Tank

Product parameters

Model: H2105 Dehumidifier

Materials: ABS

Power Supply: 36W (Max)

Water Tank Capacity: 1000ml

Weight: 1.3kg

Dimension: 154*250mm

Noise: Less than 45dB (sleep mode less than 40dB)




Coverage Area: 53.8-215 sq.ft

Work Efficiency: 350ml/day (at 30°C, 80%RH)

Thank you for purchasing the Airdestic Hyperwave. Before using the product, please read all warnings and instructions. This product is manufactured in strict accordance with quality inspection standards. Incorrect usage may result in damage to the product, such as over-heating, toxic smoke, or fire. We will not be responsible for any damage caused by improper operation.

Instructions

Before using the dehumidifier, please ensure that all parts are complete and place the product on a horizontal surface.

1.  Switch Button: Plug in the power supply and press the switch button to turn on the dehumidifier. The indicator light will illuminate, indicating that it is in the working state. Press the “on/off” button again to stop the dehumidifier, and the indicator light will turn off.
2.  RGB Light Button: When the dehumidifier is powered on, press the light button to activate the colorful ambient light, which will gradually change colors. Press the button again to select a specific color, and long-press to turn off the light.
3.  Sleep Mode: Press the sleep button to enter sleep mode. In this mode, the dehumidifier operates quietly without producing any annoying sounds. Press the button again to exit sleep mode.
4. Smart Power-off: The dehumidifier is equipped with a water level controller. When the water level reaches its maximum capacity, the dehumidifier will automatically shut off, and the indicator light will turn red, signaling that the water tank needs to be emptied.

Tips for Effective Use

1. Please use the dehumidifier with the door closed. This prevents humid air from outside the room from entering and reduces the efficiency of dehumidification.
2. Avoid using a ventilation fan, as it can circulate air from the room and outside, affecting the dehumidification process.
3. It is recommended to use an electric fan for better air circulation while using the dehumidifier. The combined action of the dehumidifier, electric fan, and thermostat can effectively reduce the moisture in the room and control humidity.
4. Moisture tends to accumulate in low places. Place the dehumidifier in low areas for optimal dehumidification. Please note that the dehumidifier performs best within the following conditions: Indoor temperature between 15-55°C and indoor humidity between 45%-80%. If the indoor temperature is lower than 30°C or humidity is less than 80%, the dehumidifier may not effectively remove 350ml of moisture per day.

If you encounter any issues or have further questions, please refer to the “Common Problems and Solutions” section or contact our customer support.

- When the indoor temperature is lower than 15°C or the relative humidity is lower than 35%RH, it is not recommended to use a dehumidifier.
- If you want to dehumidify the entire room, you can put a dehumidifier in the center of the room, which can effectively remove moisture. If you want to dehumidify locally, put it nearby.
- If the dehumidifier is too close to the wall, clothing, curtains, it may cause accidents or failures such as fire, so when placing the dehumidifier near the items you want to dry, please separate it by at least 30cm-40cm.
- During operation, please don't let the suction port on the back side and the exhaust port on the upper side catch cold. In addition, in order to create as much air space as possible, please do not use it near the wall.
- It is not recommended to use air conditioners and dehumidifiers at the same time.
- It is normal for warm air to come out from the exhaust port.

Cautions

1. Place the product on a flat surface, and be careful not to roll over or bump the product during use.
2. There can be no objects blocking the air inlet/outlet.
3. The water tank is full with a red light blinking. Remove the water from the water tank in time.
4. If the electrical control part is immersed inadvertently, which causes the the keys to fail, remove the power supply and do not continue to use. You can open the water tank and place it in a dry place or dry the water with an external fan before you try to power it on again.
5. Replace the water in the water tank every day, and regularly clean the inside
6. When abnormal phenomena (such as burning smell) occur, the operation must be stopped and the power supply must be cut off.
7. Please avoid direct sunlight or place it around heating appliances.
8. Please use a suitable power supply to power the machine. It is forbidden to replace the power cord without authorization, which may cause overload operation and cause electric shock or fire.
9. When the product is not used for a long time, unplug the power supply and keep the water tank dry and clean.
10. Please unplug the power plug before cleaning the product to avoid accidental electric shock. Use a damp cloth dampened with soap to clean it. Do not use organic solvents such as gasoline or lcohol.
11. Please do not disassemble the product by yourself to avoid damage to the product and cause accidents.
12. Please place it out of reach of children, and do not let children use it alone.
13. When working, do not use thin rods or iron wires to dig out the inside of the machine to avoid danger.

Possible problems and solutions

The power is turned on, but the indicator light is not on, and the product does not work.

Solution: Check if the power cord is plugged in securely and maintains good contact. If it's loose, firmly plug it into the power outlet.

The dehumidifier is flashing red:

Solution: Verify if the water tank has exceeded its maximum level. If so, empty the water tank to the appropriate level. Additionally, ensure the water tank is properly installed with its lid on and firmly inserted into the dehumidifier.


Poor dehumidification:

Solution: Remove any obstructions blocking the front and rear of the dehumidifier. Ensure that doors and windows are closed to prevent outside air from interfering. If the temperature is below 20°C or above 50°C, relocate the dehumidifier to a suitable environment. If the unit is frozen, turn off the power and wait for it to thaw.



Thank you for your trust

Documents / Resources

	<p>AIRDESTIC Hyperwave Dehumidifier [pdf] Instruction Manual Hyperwave Dehumidifier, Dehumidifier</p>
---	---

References

- [User Manual](#)

Manuals+, Privacy Policy

This website is an independent publication and is neither affiliated with nor endorsed by any of the trademark owners. The "Bluetooth®" word mark and logos are registered trademarks owned by Bluetooth SIG, Inc. The "Wi-Fi®" word mark and logos are registered trademarks owned by the Wi-Fi Alliance. Any use of these marks on this website does not imply any affiliation with or endorsement.