



airbi SONIC Aromatherapy Diffuser Instruction Manual

[Home](#) » [airbi](#) » airbi SONIC Aromatherapy Diffuser Instruction Manual 

Airbi SONIC

Aromatherapy Diffuser
Instruction Manual
(version 1.0)



Contents

- [1 Important safety instructions](#)
- [2 Operation instruction](#)
- [3 Product care and maintenance](#)
- [4 Technická specifikace](#)
- [5 Documents / Resources](#)
- [6 Related Posts](#)

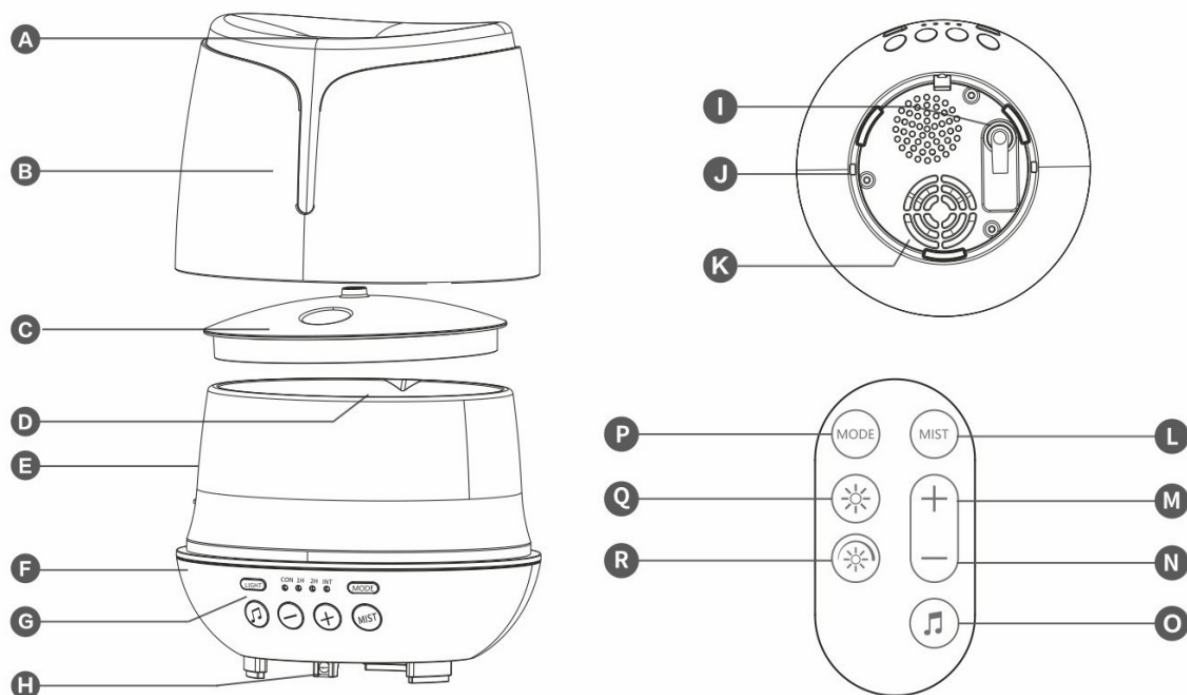
Important safety instructions

Please read through the operating instructions carefully before you use the appliance for the first time and keep them safely for later reference. If necessary pass them on to the next owner.

1. The appliance is only to be used in the home for the purposes described in these instructions. Unauthorised use and technical modifications to the appliance can lead to danger to life and health.
2. This appliance can be used by children aged 10 years and above and persons with reduced physical, sensory or mental capabilities or lack of experience and knowledge if they have been given supervision or instruction concerning use of the appliance in a safe way and understand the hazards involved. Children shall not play with the appliance. Cleaning and user maintenance shall not be made by children without supervision.
3. After unpacking, make sure that the diffuser wasn't damaged during transport. If you find any damage, contact your dealer as soon as possible. We recommend you keep the packaging for possible future use.
4. Before first use check that the device parameters (electric voltage, etc.) correspond to local conditions.
5. Do not inhale!
6. Use appliance in an environment of 10°C to 30°C. Do not use outdoors.
7. . Do not place the appliance near a heat source. Do not subject the power cord to direct heat (such as a heated hotplate, open flames, hot iron sole plates or heaters for example). Protect power cords from oil.
8. Always put the diffuser on a hard, flat horizontal surface, at least 15cm from the walls and away from any source of heat such as burners, radiators etc. The diffuser cannot operate on a surface that is not horizontal.
9. Before using the diffuser, check if AC adapter or power cord is not damaged. Do not use it if the cord is damaged.
10. If the power cord is damaged, it must be replaced by the manufacturer or a repair shop authorized by the manufacturer or by similarly qualified persons in order to avoid a hazard
11. Only use tap water.
12. Don't exceed the maximum water level. Always put the water before essential oils. Never use pure essential oils without water. Put some essential oils (1-2 drops). Too much drops may damage the unit.
13. Continued use of the diffuser in the long-term damage to the product and shorten its life.
14. Unplug the unit before any manipulation such as cleaning of filling for example. Always empty the tank when the unit is not in use.
15. Do not remove the cover of the diffuser when the unit is running.
16. Refill frequently the water in the tank to prevent any dirt that could damage the unit.
17. Clean the water tank every week. Do not use any chemical products (acids,...) or corrosive products to clean the device.

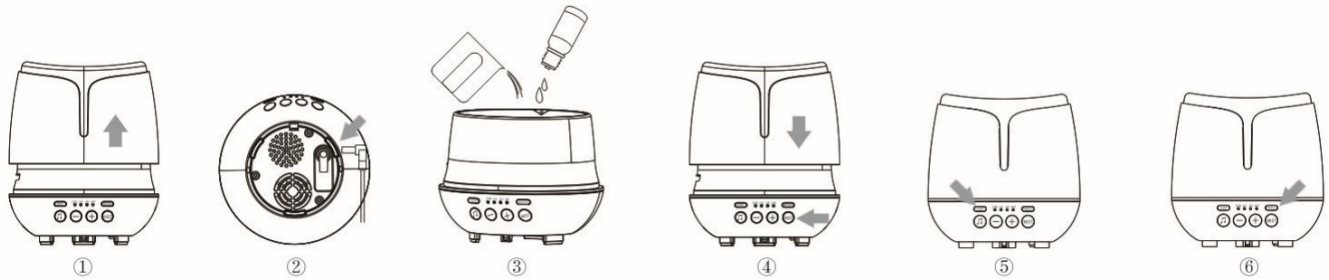
18. In case of splashing water in the circuit, remove the diffuser immediately and let it dry in the open air for at least 3 days.
19. Store the appliance in a dry place inaccessible to children (pack the appliance).
20. Only use fragrances, aromas of essential oils that do NOT contain alcohol. Alcohol can damage the appliance.
Appliances that are damaged by such additives are not covered by the warranty.
21. The manufacturer is not responsible for any damage due to improper use of the appliance.

Diffuser's scheme



- A) Mist nozzle
- B) Body cover
- C) Water tank cover
- D) Water tank
- E) Air outlet
- F) Base
- G) Operation buttons
- H) Infrared receiver
- I) DC socket
- J) Water outlet
- K) Air inlet
- L) Button MIST
- M) Button +
- N) Button -
- O) Button
- P) Button MODE
- Q) Button
- R) Button

Operation instruction



1. Place the product horizontally, remove the upper cover and inner cover (fig. 1).
2. Connect the adaptor to the DC jack on the bottom (fig. 2).
3. Fill water into the water tank, not higher than the max water level line max. 300 ml. Fresh tap water is applicable. Do not pour water or other liquid into the air outlet. Add 3 to 4 drops of essential oils. The amount of oil can be on your hobby (fig. 3).
4. . Replace the inner cover and upper to the original position, then plug the adaptor to the power socket (fig. 4).
5. Press the short button MIST (on the product, position low right) to switch on the diffuser in continual mist mode (LED light CON is on). Press shortly once again to switch the diffuser to low mist power. Press shortly once again to switch off mist power (all LEDs are off). You can switch off mist power also if you hold the button MIST 2-3 seconds.
6. Press the shortly button LIGHT (on the product, position top left) to switch on the diffuser`s light (colors are changing, default is highlight mode). Press shortly once again to stop changing colors. Press shortly once again to switch off the diffuser`s light. If you hold the button LIGHT for 2-3 sec., it will change to lowlight mode.
7. Press the shortly button MODE (on the product, position top right) to active timer function diffuser will switch off after 1 hour (LED light 1H is on). Press shortly once again to change the timer setting diffuser will switch off after 2 hours (LED light 2H is on). Press shortly once again to switch off the timer function (fig. 6).
8. Press the button for 2-3 sec. to switch on/off the Bluetooth function. Press this button shortly to stop/play music.
9. Press the short button to play the previous song, press the same button for 2-3 sec. to decrease the volume of the music.
Press the short button + to play the next song, press same button for 2-3 sec. to increase volume.

Operations with remote control

Button MIST (L)

1. short press switch on the diffuser with high mist power (LED did CON is on)
2. . short press change diffuser to low mist power
3. short press switch off diffuser (all LED are off) long-press switch off diffuser (all LED are off)

Button MODE (P)

1. short press switch on a timer (LED did 1H is on)
2. short press change setting of timer (LED diodes 2H is on)
3. short press switch off timer (LED diodes 1H and 2H are off) long-press change between continual (LED did CON is on) and interval mode (LED diodes INT is on, the diffuser is on for 20 sec. and off for 40 sec.)

Button

- short press switch on the light (colors are changing)
- short press choose actual color (colors are not changing)
- short press switch off color long-press
- change between high and low light level (default is high)

Button +

- short press change to next music
- long-press increase volume of music

Button-

- short press change to previous music
- long-press decrease volume of music

Button

short press play/stop music

long-press switch on/off Bluetooth function, play the indication sound after successful pairing with Bluetooth device (e.g. mobile phone).

Notice

The appliance switches itself off as soon as the water in the water tank is almost empty. The amount and intensity of produced mist vary, but this is not unusual and should not be considered as a fault. If you want to use a different kind of essence, always clean water tank properly.

Accidental water leakage

If the appliance accidentally overturns or otherwise water gets inside the appliance, proceed as follows: · disconnect the appliance from the power supply and remove the water tank cover · carefully pour the rest of the water out of the water container · gently shake the appliance to remove water from the inside and then let it dry for at least 24 hours at a dry place

Product care and maintenance

After using 5-6 times or 3-5 days please clean the appliance as follows:

1. Before any cleaning operation, switch the appliance off and unplug it.
2. Clean the water tank with water and vinegar on a soft cloth regularly.
3. Please don't clean the appliance with thinner, gasoline and cleanser.
4. Please pour away the water when in no use
5. Keep dry when in no use to avoid bacterial and mildew (fungus).
6. Never immerse the unit in water or let water enter the air outlet or any other openings.

Problems and solutions

When you switch on the appliance, it will switch off in 1 second. Without mist spray or abnormal mist spray.

Water leakage.

- check water tank if there is water or not · check if the AC adaptor is connected correctly
- check water tank if there is water or not, also check if the water is under max. line
- clean water tank · check air inlet and clean it from dust
- check if the upper cover is placed correctly
- check ambient temperature and humidity (too low temperature or too high humidity may lead to mist getting easier together and forming water drops)

Technická specifikace

Power supply (input): AC100-240V 50/60 Hz
 Power supply (output): DC 24V
 Rated power: 12 W
 Product size: diameter 150 mm, height 150 mm
 Product weight: 220 g
 Water level: 300 ml
 Suitable area: 10-20 m²
 Complies with EU regulations: CE, EMC, WEEE

Disposal of the device (environment)



■ The European directive 2012 / 19 / CE on Waste Electrical and Electronic Equipment (WEEE), requires that old household electrical appliances must not be disposed of in the normal unsorted municipal waste stream. Old appliances must be collected separately in order to optimize the recovery and recycling of the materials they contain and reduce the impact on human health and the environment. The crossed-out “wheeled bin” symbol on the product reminds you of your obligation, that when you dispose of the appliance it must be separately collected. Consumers should contact their local authority or retailer for information concerning the correct disposal of their old appliances.

This product is in compliance with the essential requirements and other relevant provisions of EMC directive 2014/30/EU. The device was approved for use in EU countries, therefore, bears the CE. All necessary documentation is available at the importer's address.


Changes in technical parameters, properties, printing errors in the instruction manual are reserved.

EU Importer address: Bibetus s.r.o.

Loosova 262/1 Brno 638 00

Czech republic E-mail: info@bibetus.cz

Documents / Resources

	<p>airbi SONIC Aromatherapy Diffuser [pdf] Instruction Manual SONIC, Aromatherapy Diffuser, SONIC Aromatherapy Diffuser</p>
---	--