

AIR-TECH

Regular Squeeze Gentle



AIR-TECH Regular Squeeze Gentle User Manual

[Home](#) » [AIR-TECH](#) » AIR-TECH Regular Squeeze Gentle User Manual 

Contents

- [1 AIR-TECH Regular Squeeze Gentle](#)
- [2 Product Information](#)
- [3 Product Usage Instructions](#)
- [4 What's Include](#)
- [5 How to Use](#)
- [6 How to Wash](#)
- [7 SAFETY WARNING](#)
- [8 Documents / Resources](#)
 - [8.1 References](#)
- [9 Related Posts](#)

AIR-TECH

AIR-TECH Regular Squeeze Gentle



Product Information

Specifications

- Model: Ultra
- Includes: Product, Case, Lotion (10 mL / 0.34 fl.oz) * Ultra (15 mL / 0.51 fl.oz)
- Lotion Ingredients: Water, Glycerin, Sodium Polyacrylate, Ethanol, Hydroxyethylcellulose, Phenoxyethanol, Methylparaben, EDTA-2Na, Polysorbate 80, Sorbitan Cocoate, Fragrance
- Materials: Elastomer, PP, PE

Product Usage Instructions

How to Use

1. Ensure the product is clean and dry before use.
2. Apply a small amount of the included lotion or a water-based lotion to the product for lubrication.
3. Gently insert or use the product as intended for your desired sensation.

Caution

- Do not use on damaged or irritated skin.
- Stop use if any discomfort or irritation occurs.
- Do not attempt to repair a defective product; discontinue use if found defective.

FAQ

• **Q: Can I use any type of lotion with this product?**

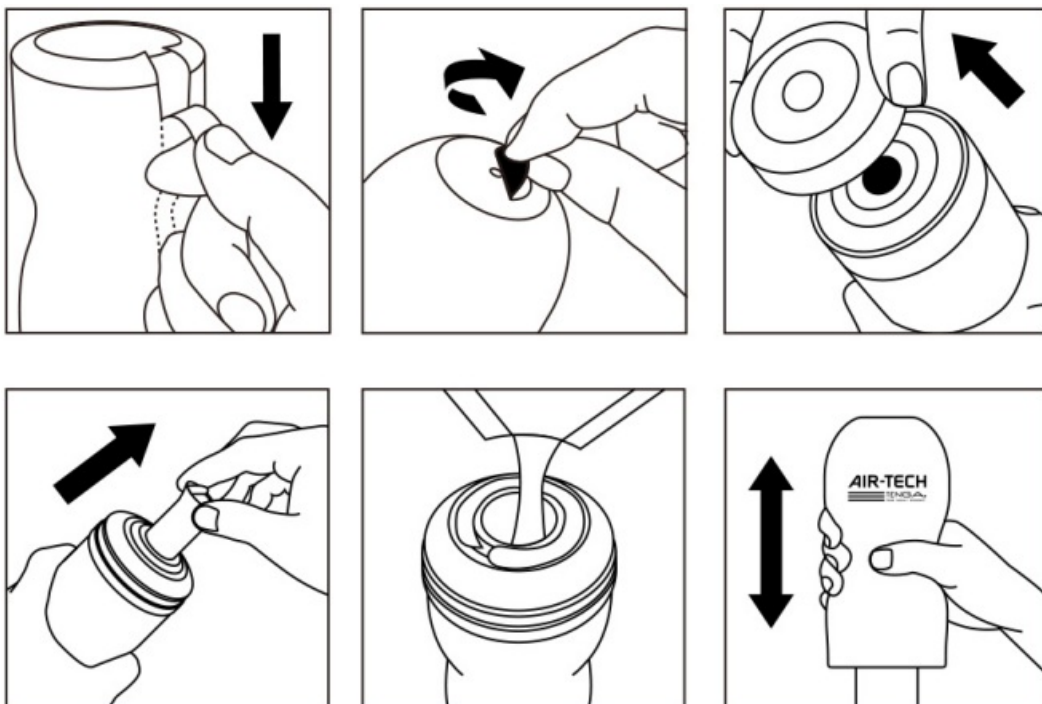
A: Only water-based lotions should be used with this product to prevent damage.

What's Include

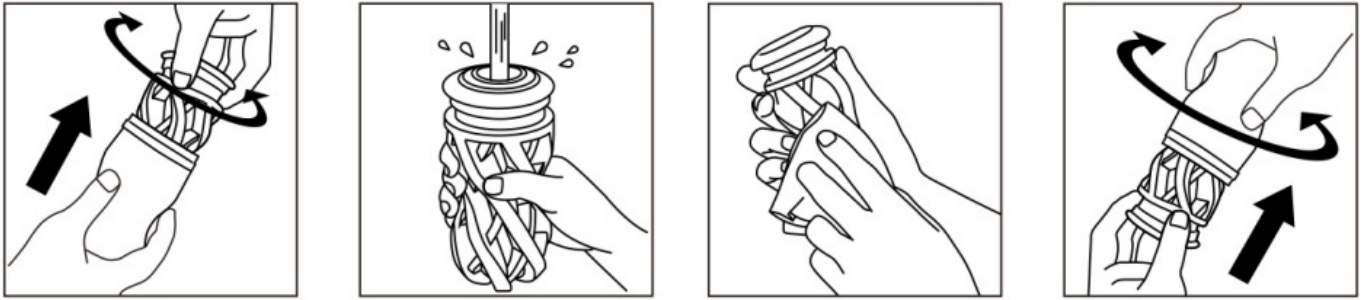


- **Includes:** Product, Case, Lotion (10 mL / 0.34 fl.oz) * Ultra (15 mL / 0.51 fl.oz)
- **Lotion Ingredients:** Water, Glycerin, Sodium Polyacrylate, Ethanol, Hydroxyethylcellulose, Phenoxyethanol, Methylparaben, EDTA-2Na, Polysorbate 80, Sorbitan Cocoate, Fragrance
- **Materials:** Elastomer, PP, PE

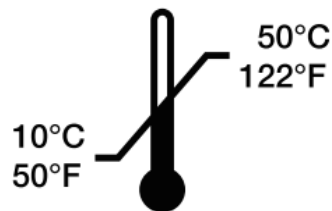
How to Use



How to Wash



SAFETY WARNING



- Do not share with others.
- Reusable Pleasure Item.
- Lotion may leak during use. Please ensure you use the item on a surface where this can occur.
- After use, ensure no lotion or other fluids remain on the item by washing thoroughly with tepid water and mild soap, and ensure product is completely dry before storing.
- Do not clean with cleansers, alcohol, highly acidic/alkaline cleaners, or corrosive substances such as benzine or paint thinner.
- Use only water-based lotions with this product.

CAUTION

- Do not use on damaged, irritated or otherwise abnormal skin. If you experience any discomfort or irritation, stop use immediately and consult a medical professional.
- Do not attempt to fix the product if found defective.
- Do not use malfunctioning or damaged products to avoid injury.

Documents / Resources

	<p>AIR-TECH Regular Squeeze Gentle [pdf] User Manual Gentle, Regular, Strong, Regular Squeeze Gentle, Regular, Squeeze Gentle, Gentle</p>
--	---

References

- [User Manual](#)

[Manuals+](#), [Privacy Policy](#)

This website is an independent publication and is neither affiliated with nor endorsed by any of the trademark owners. The "Bluetooth®" word mark and logos are registered trademarks owned by Bluetooth SIG, Inc. The "Wi-Fi®" word mark and logos are registered trademarks owned by the Wi-Fi Alliance. Any use of these marks on this website does not imply any affiliation with or endorsement.