

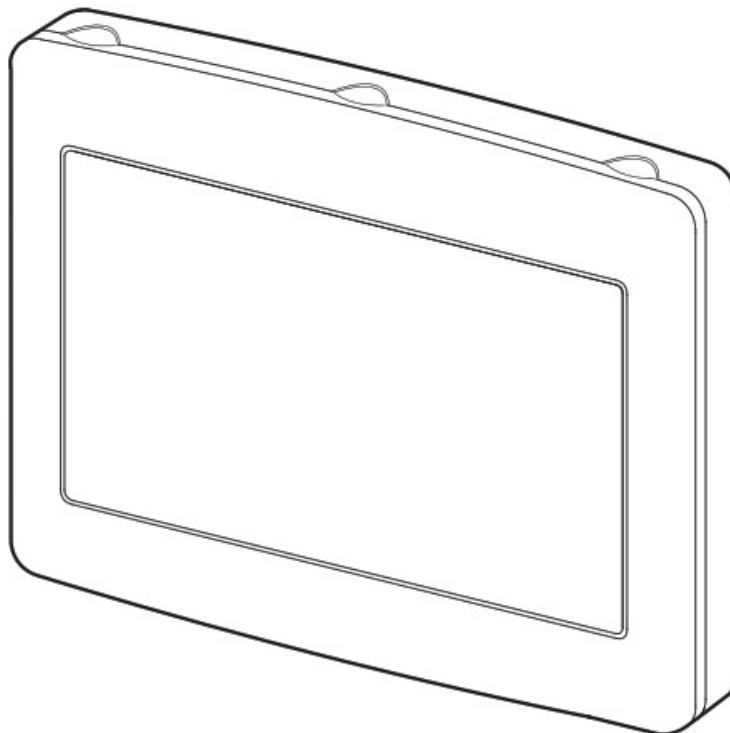


AIPHONE IXW-MA-SOFT IP Video Intercom System User Guide

[Home](#) » [AIPHONE](#) » AIPHONE IXW-MA-SOFT IP Video Intercom System User Guide



IX SERIES
IP Video Intercom System
IXW-MA-SOFT Programming Guide



ATTENTION:

This is an abbreviated programming manual addressing basic IXW-MA program settings using IX Support Tool. A complete set of instructions (IX Web Setting Manual / IX Operation Manual / IX Support Tool Setting Manual) can be found at www.aiphone.com/IX.

For more details about the features and information above, please contact Technical Support.
Aiphone Corporation | www.aiphone.com |(800) 692-0200

Contents [[hide](#)]

- [1 Adding an IXW-MA to an Existing System](#)
- [2 IXW-MA Settings with IX Series Stations](#)
- [3 IXW-MA Settings with Legacy IX Series Stations](#)
- [4 IXW-MA Relay Output Settings](#)
- [5 Door Release Timer Settings](#)
- [6 Adding IX-SOFT to the Support Tool](#)
- [7 Uploading the Setting File](#)
- [8 Exporting the Settings](#)
- [9 Documents / Resources](#)
- [10 Related Posts](#)

Adding an IXW-MA to an Existing System

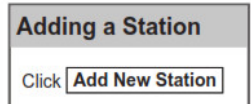
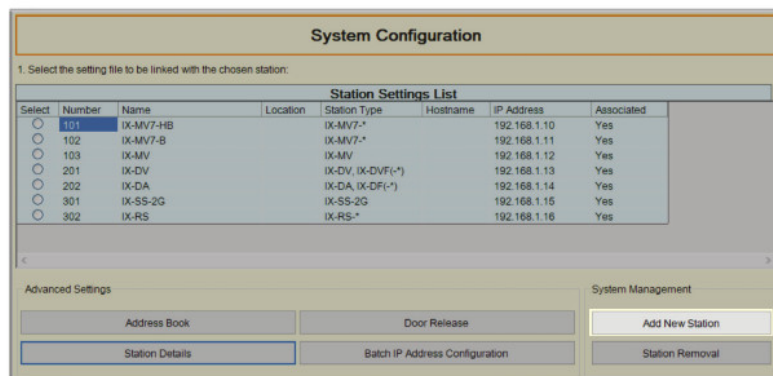
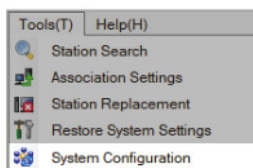
Getting Started

The IXW-MA is an IP relay with 10 configurable outputs that can be remotely triggered by a station based on its Contact Change

settings. Typically, these outputs are used for remote door release or to activate signaling devices. If the IXW-MA wasn't part of the original system configuration, it will need to be added. If the IXW-MA is already part of the system, continue to page 4.

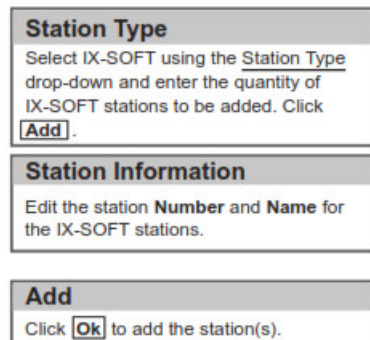
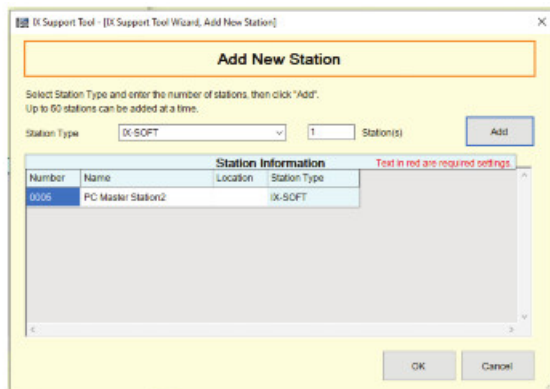
Step 1: Opening the System Configuration Settings

From the top menu bar, click Tools(T) and select System Configuration.



Step 2: Adding a New Station

The Add New Station window will open. Use this screen to add one or more IXW-MA stations.



The new IXW-MA(s) will appear in the Station Settings List with the station number and name set in the Add New Station window.

A default IP address of 192.168.1.10 (.11 for the second, .12 for the third, and so on) will be given to the station when added. This IP address can be edited by clicking Station Details from the Advanced Setup section below.

Step 3: Association

The station information created in the previous step will now need to be associated to a station found on the network.

Station Setting List
Select the IXW-MA from the top [Station Settings List](#).

Station List
Select the IXW-MA found on the network, show on the [Station List](#).

Associate
Click [Apply](#) to associate the station setting to the station.

↓
Scroll Down

↓
Scroll Down

Status
Confirm that the IXW-MA(s) has been successfully associated in the [Status](#) column. This may take several minutes. If **Success** is shown, click [Next](#).

The associated IXW-MA(s) will now have its Station Name and IP address, but no other settings at this time. Continue with the configuration process and upload to ALL stations before testing.

IXW-MA Settings with IX Series Stations

Getting Started

The following steps detail the configuration for using the outputs of the IXW-MA for door release.

Step 1A: SIF Settings for IX Series Stations (IX-MV7-*, IX-DV, IX-DVF-*, IX-SS-*, IX-SSA-*, and IX-RS-*)

Use the following steps to configure the SIF settings needed for IX Series stations. Refer to page 5 for the configuration of IX Series 1 stations (IX-MV, IX-DA, IX-BA).

Expand Function Settings on the left-hand side menu and select SIF. The SIF event trigger for door release is sent

by the door station, so the following steps use door stations as examples.

Table View

Station View

- Station Information
- Network Settings
- System Information
- Call Settings
- Option Input / Relay Output Settings
- Paging Settings
- Function Settings
 - Door Release
 - Network Camera Integration
 - Paging Settings
 - Ballroom Call
 - Email
 - CGI
 - SIF
 - Record
 - Communication Audio Mess
 - Chime
 - CSR
 - SSL Certificate
 - IEEE 802.1X
 - Display Mode

Station Information					Function Settings							
Identification					SIF							
#	Number	Name	Location	Station Type	SIF Functionality	SIP URI Format	No.01					
							SIF Settings					
							Program Type	IPv4	IPv6	Destination Port	SSL	Connection
0001	0001	Master Stations1		IX-MV7-A	Disable	Disable						
0002	0002	Master Stations2		IX-MV7-A	Disable	Disable						
0003	0003	Master Stations3		IX-MV	Disable							
0004	0004	Video Stations1		IX-DV, IX-DVF(-)	Enable	Disable	0100	192.168.1.17		65014	Enable	Socket
0005	0005	Video Stations2		IX-DA, IX-DF(-)	Disable							
0006	0006	Audio Stations1		IX-SS-2G	Enable	Disable	0100	192.168.1.17		65014	Enable	Socket
0007	0007	Handset Sub Station1		IX-RS-A	Disable	Disable						
0008	0008	I/O Adaptor1		IXW-MA	Disable	Disable						

SIF Functionality:	Enable for each station interacting with the IXW-MA
Program Type:	0100 for each station
IPv4:	Enter the IP address of the IXW-MA
Destination Port:	65014
SSL:	Enabled
Connection:	Socket

While still on the Function Settings > SIF screen, scroll right to find Change Contact.

Scroll Right →

Scroll Right →

Station Information					Function Settings				
Identification					SIF				
#	Number	Name	Location	Station Type	No.01				
					Transmission Trigger				
					Call	Begin Communication (Source)	Door Release Indication	End Communication	Change contact
0001	101	IX-MV7-HB		IX-MV7-A		<input type="checkbox"/>	<input type="checkbox"/>	<input type="checkbox"/>	<input type="checkbox"/>
0002	102	IX-MV7-B		IX-MV7-A		<input type="checkbox"/>	<input type="checkbox"/>	<input type="checkbox"/>	<input type="checkbox"/>
0003	103	IX-MV		IX-MV		<input type="checkbox"/>	<input type="checkbox"/>	<input type="checkbox"/>	<input type="checkbox"/>
0004	201	IX-DV		IX-DV, IX-DVF(-)		<input type="checkbox"/>	<input type="checkbox"/>	<input type="checkbox"/>	<input checked="" type="checkbox"/>
0005	202	IX-DA		IX-DA, IX-DF(-)		<input type="checkbox"/>	<input type="checkbox"/>	<input type="checkbox"/>	<input type="checkbox"/>
0006	301	IX-SS-2G		IX-SS-2G		<input type="checkbox"/>	<input type="checkbox"/>	<input type="checkbox"/>	<input type="checkbox"/>
0007	302	IX-RS		IX-RS-A		<input type="checkbox"/>	<input type="checkbox"/>	<input type="checkbox"/>	<input type="checkbox"/>
0008	401	IXW-MA		IXW-MA		<input type="checkbox"/>	<input type="checkbox"/>	<input type="checkbox"/>	<input type="checkbox"/>

Change Contact

Check the Change Contact box for each door station that will interact with the IXW-MA.

Update

Click Update to save the SIF and Change Contact settings.

Important

If there are no Legacy IX Series stations, skip to page 6 to continue the programming process.

IXW-MA Settings with Legacy IX Series Stations

Getting Started

The following steps detail the configuration for using the outputs of the IXW-MA for door release.

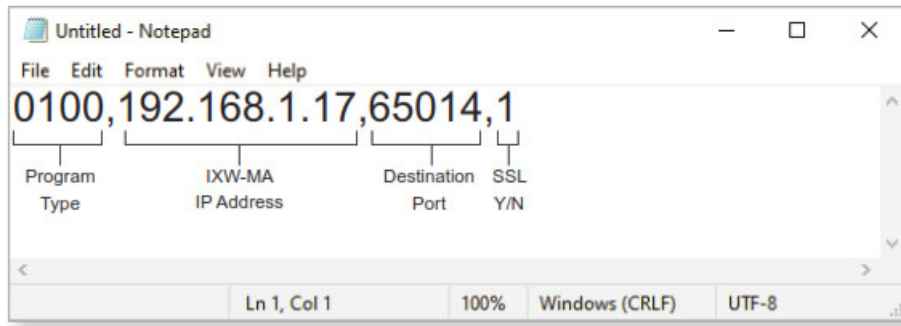
Step 1B: SIF Settings for Legacy IX Series Stations (IX-DA, IX-BA, IX-MV)

Use the following steps to configure the SIF settings needed for legacy IX Series stations. Refer to page 4 for the configuration of current IX Series stations.

A line of code will need to be written, then uploaded, to allow legacy IX Series stations (IX-DA, IX-BA, IX-MV) to

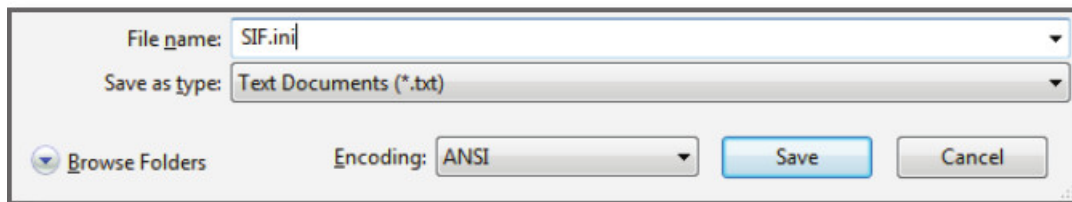
interact with the IXW-MA. Open a plain text editor, like Notepad. In the text editor, type the following information.

Example .ini File:



Program Type:	Always use
IXW-MA IP Address:	IP address associated in Support Tool to the IXW-MA
Destination Port:	Always use 65014
SSL Y/N :	Always use 1

The file must be saved with a .ini extension, which is typically not found using the Save as Type drop-down menu of the text editor. To do this, type in “.ini ” at the end of the file name. There is not a required file name, but for clarity, the example will show the file being saved as “SIF.ini”.



Save this file to an easily accessible location on the PC, as it will be uploaded to the stations in the next step.

Important

Legacy IX Series stations require firmware v2.1 or higher to be compatible with the IXW-MA. To check the latest version of firmware, go to Tools(T) on the top menu of Support Tool and select Station Search. Here, the firmware version of every station found on the network will be displayed.

Step 2B: SIF Settings for Legacy IX Series Stations

Next, the newly created .ini file will be uploaded to each station. In the case of door release, only door stations are required to receive this file, as the SIF command for door release comes from the door station and not the master station.

From the left-hand side menu, expand Function Settings and select SIF. Once on the SIF screen, click the Station View button at the top of the screen.

Station View

Function Settings

- Door Release
- Network Camera Integration
- Paging Settings
- Bathroom Call
- Email
- CGI
- SIF
- Record
- Communication Audio Mess
- Chime
- CSR
- CGI Certificate

Station Number: 202
Station Name: IX-DA
Location:
Station Type: IX-DA, IX-DF(-*)

Select Station to Edit

Type: All
Number: 202

Previous Select Next

Select Station

Use the Number drop-down under **Select Station to Edit** and choose an IX Series 1 door station. Click **Select** and ensure that the correct station is shown in upper left of the screen.

SIF Settings

From the menu on the left, expand **Function Settings** and select **SIF**.

SIF

SIF Functionality
☒ Enable
☐ Disable

SIP URI Format
☐ Enable
☐ Disable

Scroll Down

Scroll down until **SIF File Management** is displayed.

Station Number: 202
Station Name: IX-DA
Location:
Station Type: IX-DA, IX-DF(-*)

Select Station to Edit

Type: All
Number: 202

Previous Select Next

☒ Copy to all stations
☐ Copy to stations by
Settings: Ne
Indicates fields which

SIF File Management

SIF Communication Settings (sif.ini)
C:\Users\Nasen Dunn\Documents\SIF.ini

Browse Upload
Download

To upload, station must be associated.

File Selection

Click the **Browse** button and select the .ini file that was created in Step 1B.

Upload

Upload the selected file to the station.

Update

Click **Update** to save the SIF setting changes.

Important

Return to **Table View** for the remaining steps.

IXW-MA Relay Output Settings

Step 1: Configuring Relay Output Settings

From the left-hand side menu, expand Option Input / Relay Output Settings and select Relay Output. Then, use the Display Settings drop-down menu at the top of the page to select one of the 10 relay outputs to configure.

Table View

Row

Previous Next

[Display Settings]
Relay Output 1

[Weekly Schedule]
Schedule View Ad

Enter Number Display

Number of Notes: 6
1. Contact Change SIF Event is associated with Change Contact of Relay Output 1 from SIF Orig
2. When set to blank, it will perform in association with the contact change of Relay Output 1 on a

Station View

Call Settings

- Option Input / Relay Output S
 - Option Input
 - Relay Output
- Paging Settings
- Function Settings
 - Door Release
 - Network Camera Integrati
 - Paging Settings
 - Bathroom Call
 - Email
 - CGI
 - SIF
 - Record
 - Communication Audio Me
 - Chime

Station Information				Option Input / Relay Output Settings	
Identification				Relay Output	
#	Number	Name	Loc	Station Type	Relay Output 1
					Name Function
0001	101	IX-MV7-HB		IX-MV7-*	Door Release
0002	102	IX-MV7-B		IX-MV7-*	Door Release
0003	103	IX-MV		IX-MV	Door Release
0004	201	IX-DV		IX-DV, IX-DVF(-	Door Release
0005	202	IX-DA		IX-DA, IX-DF(-*)	Door Release
0006	301	IX-SS-2G		IX-SS-2G	Door Release
0007	302	IX-RS		IX-RS-*	Door Release
0008	401	IXW-MA		IXW-MA	Contact Change SIF Event

Function

Use the Function drop-down menu to select **Contact Change SIF Event** for the IXW-MA.

While still on the Relay Output screen, scroll right until Contact Change SIF Event under Relay Output 1 is displayed.

Station Information			Option Input / Relay Output Settings				Text in red are required settings.	
Identification			Relay Output					
Number	Name	Loc	Station Type	Relay Output 1		Option Relay Control	Output Time Range	Output Time
				Contact Change SIF Event	Station List			
101	IX-MV7-HB		IX-MV7-*			Disable	200-2000 [msec]	400
102	IX-MV7-B		IX-MV7-*			Disable	200-2000 [msec]	400
103	IX-MV		IX-MV				200-2000 [msec]	400
201	IX-DV		IX-DV, IX-DVF(-)			Disable	200-2000 [msec]	400
202	IX-DA		IX-DA, IX-DF(-*)				200-2000 [msec]	400
301	IX-SS-2G		IX-SS-2G			Disable	200-2000 [msec]	400
302	IX-RS		IX-RS-*			Disable	200-2000 [msec]	400
401	IXW-MA		IXW-MA	201	Open	Disable	200-2000 [msec]	400

Select a Station

Find the IXW-MA and click **Open** and select the **Station Number** of the station to communicate with the IXW-MA.

Update

Click **Update** to save the relay output settings and repeat for each station and relay output needed.

Door Release Timer Settings

Getting Started

The amount of time the relay output activates on the IXW-MA is determined by the Output Time Range set for the door station interacting with it. If the door station's Output Time Range is set to 3 seconds, for example, the IXW-MA output it is assigned to will also activate for 3 seconds.

Relay Output Settings

To adjust the amount of time the door release relay output activates, expand Relay Input / Relay Output Settings and click Relay Output.

Scroll Right →
Scroll Right →

Table View

Station View

- Call Settings
- Option Input / Relay Output Settings
 - Option Input
 - Relay Output
- Paging Settings

Station Information				Option Input / Relay Output Settings		
Identification				Relay Output		
#	Number	Name	Location	Station Type	Relay Output 1	Relay Output 1 (Output Time is valid when Relay Output function is s
					Option Relay Control	Output Time Range
0001	0001	Master Stations1		IX-MV7-*	Disable	200-2000 [msec]
0002	0002	Master Stations2		IX-MV7-*	Disable	200-2000 [msec]
0003	0003	Master Stations3		IX-MV7-*	Disable	200-2000 [msec]
0004	0004	Video Stations1		IX-DV, IX-DVF(-)	Disable	200-2000 [msec]
0005	0005	Video Stations2		IX-DV, IX-DVF(-)	Disable	200-2000 [msec]
0006	0006	Audio Stations1		IX-SSA(-)	Disable	3-600 [sec]
0007	0007	Handset Sub Station1		IX-RS-*	Disable	200-2000 [msec]
0008	0008	I/O Adaptor1		IXW-MA	Disable	200-2000 [msec]

Output Time Range and Output Time

Use the drop-down menu under Output Time Range to select either **200-2000(msec)** or **3-600(sec)**, then use the **Output Time** section to enter the desired value.

Update

Click the **Update** button save the changes.

Adding IX-SOFT to the Support Tool

Step 1: Opening the System Configuration Settings

From the top menu bar, click Tools(T) and select System Configuration.

Tools(T) Help(H)

- Station Search
- Association Settings
- Station Replacement
- Restore System Settings
- System Configuration

System Configuration

1. Select the setting file to be linked with the chosen station.

Station Settings List						
Select	Number	Name	Location	Station Type	Hostname	IP Address
<input type="radio"/>	101	IX-MV7-HB		IX-MV7-*		192.168.1.10
<input type="radio"/>	102	IX-MV7-B		IX-MV7-*		192.168.1.11
<input type="radio"/>	103	IX-MV		IX-MV		192.168.1.12
<input type="radio"/>	201	IX-DV		IX-DV, IX-DVF(-)		192.168.1.13
<input type="radio"/>	202	IX-DA		IX-DA, IX-DF(-*)		192.168.1.14
<input type="radio"/>	301	IX-SS-2G		IX-SS-2G		192.168.1.15
<input type="radio"/>	302	IX-RS		IX-RS-*		192.168.1.16

Advanced Settings

Address Book

Station Details

Door Release

Batch IP Address Configuration

System Management

Add New Station

Station Removal

Add New Station

Click **Add New Station**

Step 2: Adding a New Station

The Add New Station window will open. Use this screen to add one or more IX-SOFT stations.

Number	Name	Location	Station Type
0005	PC Master Station2		IX-SOFT

Station Type

Select IX-SOFT using the Station Type drop-down and enter the quantity of IX-SOFT stations to be added. Click **Add**.

Station Information

Edit the station **Number** and **Name** for the IX-SOFT stations.

Add

Click **Ok** to add the station(s).

Step 3: Station Details

Returning to the System Configuration screen, click Station Details to further customize the Station Number and Name, as well as set the Static IP address of the PCs running IX-SOFT. The IP address must match the PC's IP address or the associate step will fail.

Select	Number	Name	Location	Station Type	IP Address	Status
<input type="checkbox"/>	101	IX-MV7-HB		IX-MV7-*		-
<input type="checkbox"/>	102	IX-MV7-B		IX-MV7-*		-
<input type="checkbox"/>	103	IX-MV		IX-MV		-
<input type="checkbox"/>	201	IX-DV		IX-DV, IX-DVF(-*)		-
<input type="checkbox"/>	202	IX-DA		IX-DA, IX-DF(-*)		-
<input type="checkbox"/>	301	IX-SS-2G		IX-SS-2G		-
<input type="checkbox"/>	302	IX-RS		IX-RS-*		-
<input type="checkbox"/>	401	IXW-MA		IXW-MA		-



Important

PCs running the IX-SOFT application must have a static IP address assigned to it (or DHCP reservation). The IX Series is peer-to-peer, the static IP address of all instances of IX-SOFT must be known by any station interacting with it.

Step 4: Associating IX-SOFT

Once the Station Details have been configured the created setting must be paired with an IX-SOFT installation. Ensure IX-SOFT is running before proceeding. Under the Station Settings List select the setting to be associated with IX-SOFT.

1. Select the setting file to be linked with the chosen station:

Station Settings List								
Select	Number	Name	Location	Station Type	Hostname	IP Address	Subnet Mask	Associated
<input type="radio"/>	0001	PC Master Station1		IX-SOFT		10.0.0.131	255.255.255.0	Yes
<input type="radio"/>	0002	Video Station1		IX-DV, IX-DVF(-*)		10.0.0.40	255.255.255.0	Yes
<input type="radio"/>	0004	IXWMAPC10		IXW-MA		10.0.0.42	255.255.255.0	Yes

Advanced Settings

Address Book

Station Details

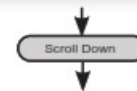
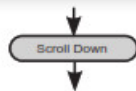
Door Release

Batch IP Address Configuration

System Management

Add New Station

Station Removal



Select Station Search under Station List and wait for the station search to complete. If the PC running IX-SOFT is the same PC running IX-Support Tool, the Search for IX-SOFT on this PC check box must be selected or the install will not be found. Select the PC running IX-SOFT to be associated with the selected setting.

☒ Search and select station within local network: Station Search Protocol

Station List								
Select	Number	Name	Location	Station Type	IP Address	Subnet Mask	MAC address	Associated
<input checked="" type="radio"/>	0001	PC Master Station1		IX-SOFT	10.0.0.131	255.255.255.0	F8:E4:E3:CC:31:4D	-

☒ Search for IX-SOFT on this PC

Apply Associate Automatically Station Search

Station(s) that have been associated with a setting file are listed below.

Select Next to go to the Setting File Upload, click Finish without uploading to any stations. This process will be covered in a future step.

Setting File Upload

Select the station(s) to upload the Setting File(s): Connection Status 0/0

Station List							Text in red are required settings.
Select	Number	Name	Location	Station Type	IP Address	Status	
<input type="checkbox"/>	101	IX-MV7-HB		IX-MV7-*		-	
<input type="checkbox"/>	102	IX-MV7-B		IX-MV7-*		-	
<input type="checkbox"/>	103	IX-MV		IX-MV		-	
<input type="checkbox"/>	201	IX-DV		IX-DV, IX-DVF(-*)		-	
<input type="checkbox"/>	202	IX-DA		IX-DA, IX-DF(-*)		-	
<input type="checkbox"/>	301	IX-SS-2G		IX-SS-2G		-	
<input type="checkbox"/>	302	IX-RS		IX-RS-*		-	
<input type="checkbox"/>	401	IXW-MA		IXW-MA		-	

Select Station by Type:

This PC's IP Address: 172.18.10.91

Manual Date / Time Setup Start Upload Next Finish

Step 5: SIF Settings (IX-SOFT Licensing)

Click the Station View button at the top of the screen. From the left-hand side menu, expand Function Settings and select SIF.

Under the Select Station to Edit section, use the drop-down menu to select the added IX-SOFT station and click Select.

Table View

Station View

Station Information

Network Settings

System Information

Call Settings

Option Input / Relay Output Settings

Paging Settings

Function Settings

Door Release

Network Camera Integration

Paging Settings

Bathroom Call

Email

CGI

SIF

Record

Station Number: 0001

Station Name: PC Master Station1

Location:

Station Type: IX-SOFT

Select Station to Edit

Type: IX-SOFT

Number: 0001

Previous

Select

Next

Under the SIF section, station information of the IXW-MA-SOFT will need to be added to the SIF settings of each IX-SOFT instance. Fill in #01 for each IX-SOFT station with the following settings.

#	Program Type 0000-1111	IPv4 1.0.0.1-223.255.255.254 or hostname(1-64 alphanumeric characters)	IPv6 :FF:0:FEFF:FFFF:FFFF:FFFF:FFFF:FFFF or hostname(1-64 alphanumeric characters)	Destination Port 1024-65535	SSL	Connection
01	1111	10.0.0.42		65060	Enable	Socket
02						

Program Type:	1111
IPv4:	Static IP Address of the IXW-MA-SOFT device
Destination Port	65060
SSL:	Enabled
Connection:	Socket

Scroll Down

Scroll Down

Transmission Trigger

Event

01

Begin Outgoing Call

Begin Communication (Source)

Door Release Indication

End Communication

Unit error

Begin broadcast

End broadcast

Begin Transfer

End Transfer

Periodical Transmission

Initialization Notice

End Outgoing Call

Begin Incoming Call

End Incoming Call

<

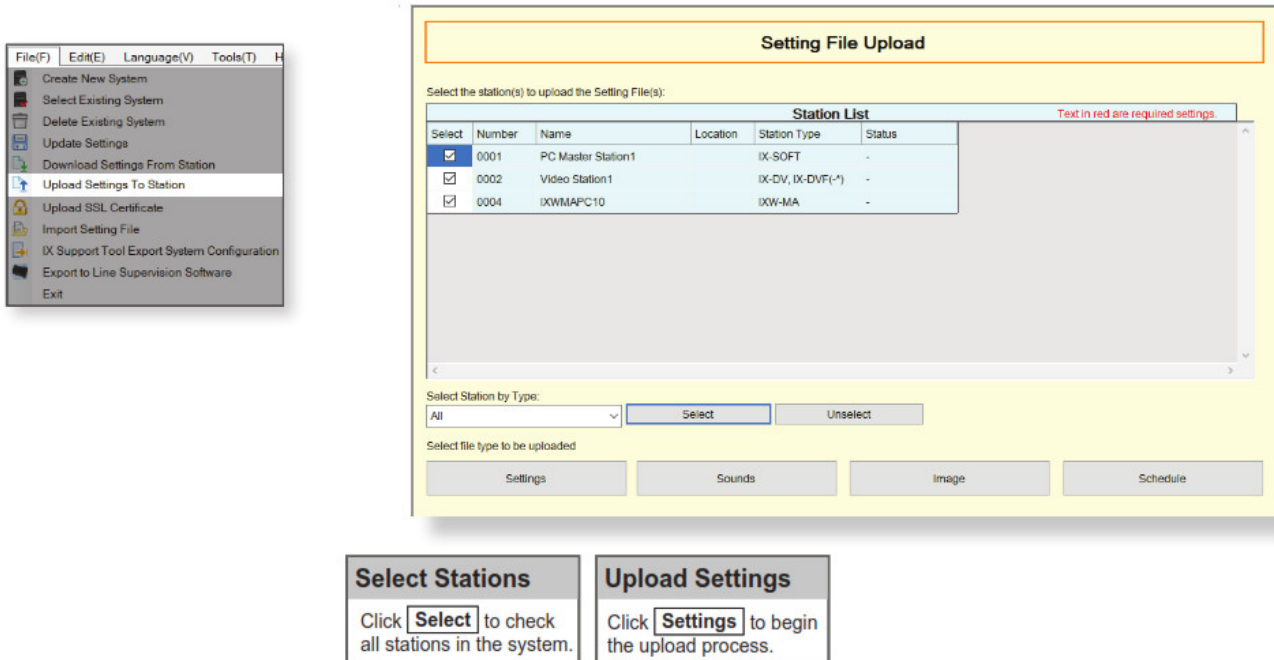
Transmission Trigger

Scroll down to transmission trigger under the SIF settings and for #01 select the check box for “initialization notice”

Uploading the Setting File

Setting File Upload

The final step after configuring new settings, or making changes to existing settings, is to upload the setting file to all stations. If the setting files are not uploaded, any changes made in the Support Tool will not be reflected on the station(s). To do this, click File(F) and select Upload Settings to Station.



Upload Status

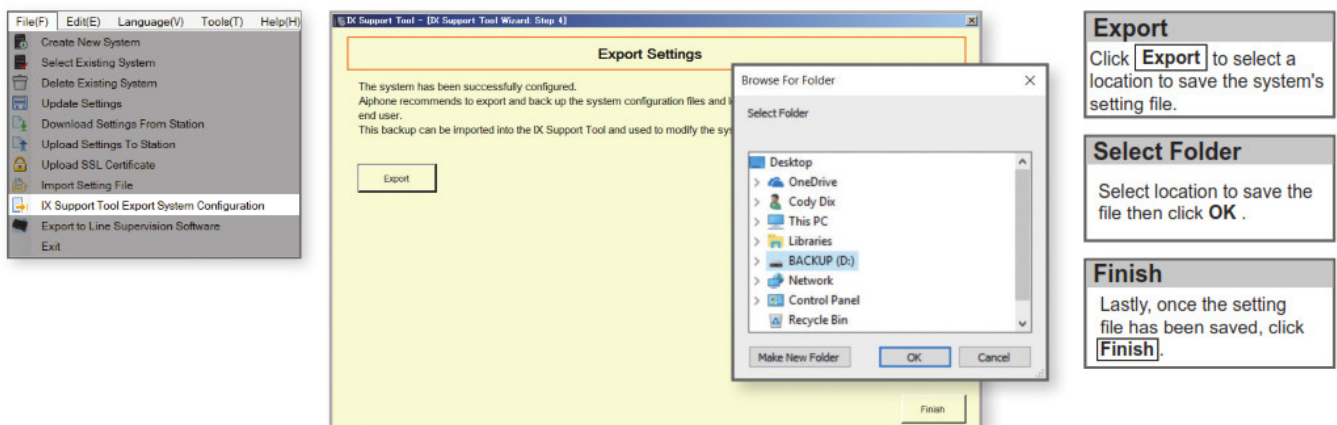
If the status shows Failed, ensure the programming PC is in the same subnet as the IX Stations it is uploading to, and that the stations are powered on and available (solid status light on the station).

Exporting the Settings

Export Settings

A copy of the system's setting file should be exported to a secure location or external drive. This step is critical for the ongoing maintenance of this system. If settings are to be changed in the future, or new stations are to be added, this file is required to do so.

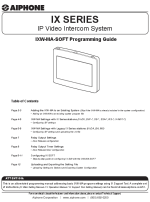
To export the file, click on File(F) at the top of the screen and select IX Support Tool Export System Configuration.



For more details about the features and information above, please contact Technical Support.

For more details about the features and information above, please contact Technical Support.
Aiphone Corporation|www.aiphone.com|(800) 692-0200

Documents / Resources



[AIPHONE IXW-MA-SOFT IP Video Intercom System](#) [pdf] User Guide
IXW-MA-SOFT, IP Video Intercom System, IXW-MA-SOFT IP Video Intercom System