



AIPHONE IXW-HWCBP Hand Wave Call Button and Surface Mount Box Instructions

[Home](#) » [AIPHONE](#) » AIPHONE IXW-HWCBP Hand Wave Call Button and Surface Mount Box Instructions 

AIPHONE IXW-HWCBP Hand Wave Call Button and Surface Mount Box



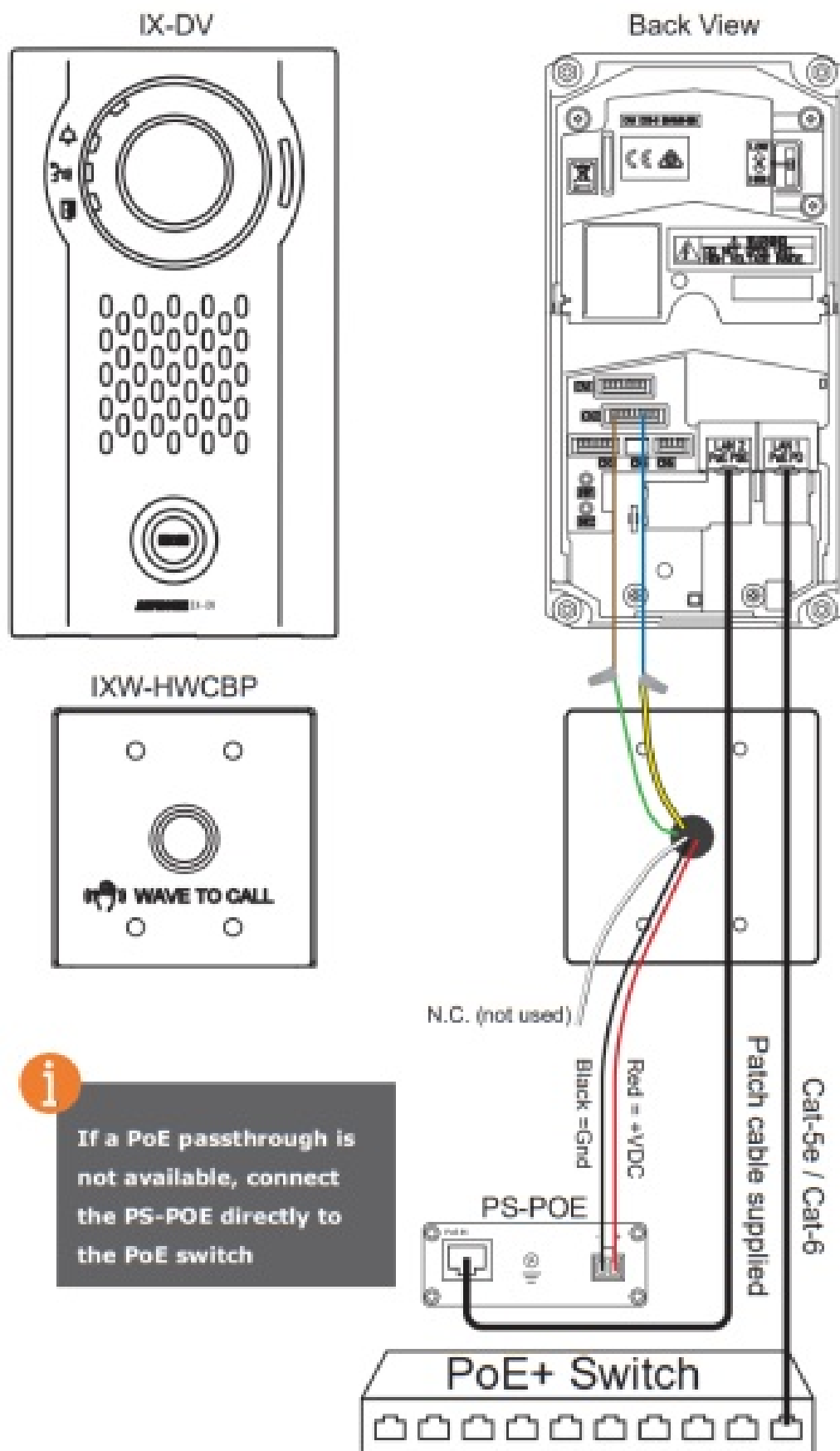
Contents

- [1 Instructions](#)
- [2 Wiring](#)
- [3 Package Contents](#)
- [4 Installation](#)
- [5 Specifications](#)
- [6 Programming](#)
 - [6.1 Enabling Door Station Option Input](#)
 - [6.2 Door Station Option Input Call](#)
 - [6.3 Uploading Settings to Stations](#)
- [7 Documents / Resources](#)
 - [7.1 References](#)
- [8 Related Posts](#)

Instructions

IXW-HWCBP includes a touchless switch attached to a mounting plate, a PS-POE, and the SBX-2G/A surface mount box. This device can be connected to any IX Series door station with a trigger input and a PoE passthrough. It will place calls to the programmed station without having to touch the call button. The touchless switch is powered by the PS-POE. The switch's contact output will trigger a contact input on the door station. The contact input will need to be programmed and assigned to a calling group. This instruction manual will show how to connect the IXW-HWCBP to the door station and program the door station for contact input calling.

Wiring



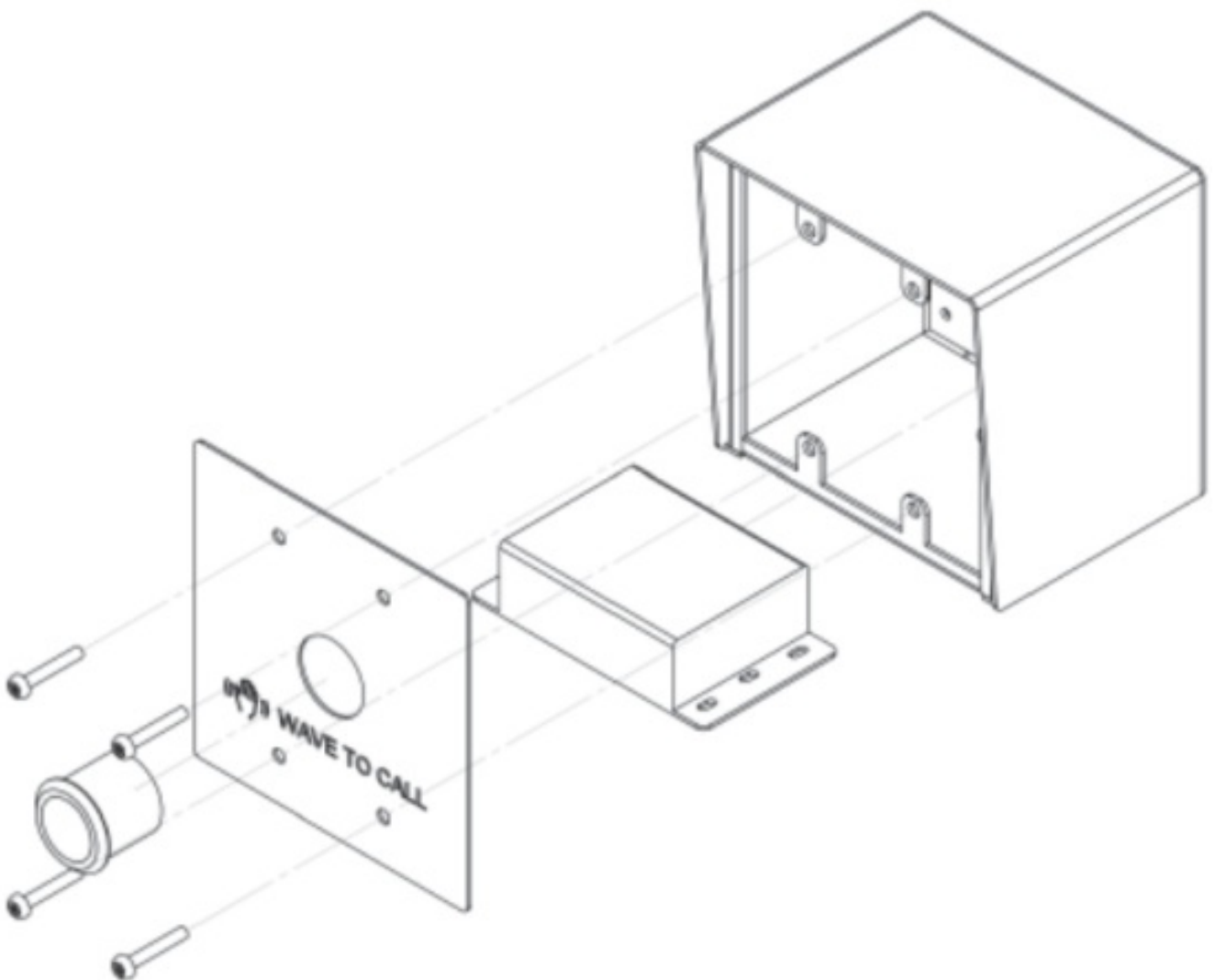
A PoE+ switch is required when using the IXW-HWCBP. Connect a network cable from the PoE+ switch to LAN 1 of the IX Series door station. LAN 2 connects to the included PS-POE. Connect the power output of the PS-POE to the red (+VDC) and black (Gnd) wires of the touchless switch. Connect the green (N/O) and yellow (Common) wires of the touchless switch to contact input 1 on the IX Series door station (brown/blue wires on CN2).

Package Contents

- Qty 1 Panel with touchless switch
- Qty 1 SBX-2G/A
- Qty 1 PS-POE
- Qty 4 speed nuts for panel mounting
- Qty 4 screws for panel mounting
- Qty 1 three-foot patch cable

Installation

1. Secure SBX-2G/A to wall
2. Connect included patch cable, power wires, and a ground wire to PS-POE and place unit inside the SBX-2G/A
3. Connect included patch cable to LAN 2 of IX series door station
4. Connect touchless switch to input of IX series door station and PS-POE
 - Green (N.O.) to Brown (CN2 of IX-DV)
 - Yellow (Common) to Blue (CN2 of IX-DV)
 - White (N.C.) not used
 - Red (+VDC) to + of PS-POE
 - Black (GND) to – of PS-POE
5. Secure switch panel to SBX-2G/A



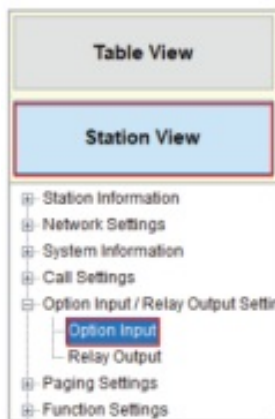
Specifications

Dimensions: 4-13/ " H x 4- " W x 4" D

Programming

Enabling Door Station Option Input

The first step is to enable the contact input on the IX Series door station will connect to the IXW-HWCBP. Open IX Support Tool and select the system to edit. Door stations can have up to 6 contact inputs. These instructions will show using contact input 1. In the upper left corner of the screen click **Station View** to switch from **Table View** to **Station View**.



1.1 - Option Input
Expand **Option Input / Relay Output Settings** and click **Option Input**.

Station Number:	201
Station Name:	IX-DV - Front Door
Location:	
Station Type:	IX-DV, IX-DVF(-)

Select Station to Edit		
Type:	All	▼
Number:	201	▼
<div>Previous Selected Next</div>		

1.2 - Select a Station
Use the drop-down menu or click **Next** to choose the station number of the door station to be configured. Click **Select**.

•Option Input

Option Input #	Option Input 1	When using IX-DVF-2RA or IX-DVF-RA, change detection type to "B"
Name	Touchless Switch	1-24 alphanumeric characters (* Certain characters may not be display)
Function	<div><input type="radio"/> No Function</div> <div><input checked="" type="radio"/> Call (* Customize Call in "Call Settings".)</div> <div><input type="radio"/> Answer Call / Page (* Customize Page in "Paging Settings".)</div> <div><input type="radio"/> Paging (* Customize Message Page in "Paging Settings".)</div> <div><input type="radio"/> Message Page (* Only one Option Input can be set for External Input Page.)</div> <div><input type="radio"/> External Input Page (* Only one Option Input can be set for External Input Page.)</div> <div><input type="radio"/> Turn LCD On</div> <div><input type="radio"/> Relay Latch Reset</div> <div><input type="radio"/> Bathroom Indicator Reset</div> <div><input type="radio"/> API</div>	
Type	<div><input checked="" type="radio"/> Make <input type="radio"/> Break</div>	
Detection Time Range	<div><input checked="" type="radio"/> 0 (Immediate)</div> <div><input type="radio"/> 200-2000 [msec]</div> <div><input type="radio"/> 3-600 [sec]</div>	

1.3 - Option Input / Name
Select **Option Input 1** using the drop-down menu and assign a **Name**.

1.4 - Choose a Function
Select **Call** for this option input.

1.5 - Contact Settings
Select **Make** for the **Type** and **0 (Immediate)** for the **Detection Time Range**.

Click **Update** to save your settings. **Update**

Door Station Option Input Call

The next step is to assign a call group to the trigger input. The call group for the trigger input, will be the same group assigned to the call button.

- [-] Station Information
- [-] Network Settings
- [-] System Information
- [-] Call Settings
 - [-] Station Information
 - [-] Called Stations (Master Station)
 - [-] Called Stations (Door/Sub Station)
 - Call Origination**
 - [-] Incoming Call
- [-] Option Input / Relay Output Settings
- [-] Paging Settings
- [-] Function Settings
- [-] Transfer Settings
- [-] Station Settings
- [-] Maintenance

2.1 - Call Origination

Expand **Call Settings** and click **Call Origination**.

Station Number:	201
Station Name:	X-DV - Front Door
Location:	
Station Type:	X-DV, X-DVF (-)

Select Station to Edit	
Type:	All
Number:	201
<input type="button" value="Previous"/> <input type="button" value="Select"/> <input type="button" value="Next"/>	

2.2 - Select a Station

Use the drop-down menu to choose the station number of the door station to be configured and click **Select**.

Call Origination

Call Button / Option Input #

Option Input 1

Call Method

☒ Standard Destination
☐ Change Destination by Time Delay
☐ Change Destination by Schedule

Ringback Tone

None

Call Timeout

10-600 sec

60

sec

Ringback Tone Count (time(s))

Infinite

Call Destination

Call Destination

01-99

Open

Priority

Standard Mode Settings

Call Destination

01

Priority

Normal

2.3 - Select an Input

Use the drop-down menu and select **Option Input 1**.

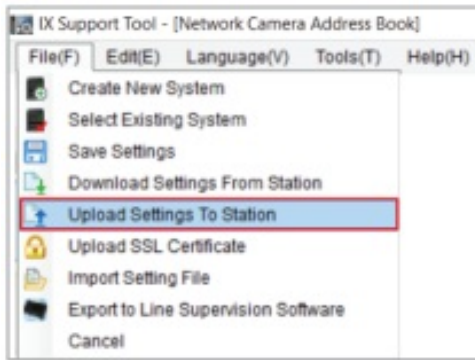
2.4 - Select a Destination

Click **Open** under **Call Destination** and select group **01**. Use the **Priority** drop-down menu to select the calling priority.

Click **Update** to save your settings.

Uploading Settings to Stations

The final step is to upload all updated settings from Support Tool to the door station.



3.1 - Upload Settings to Station
From the menu bar select **File** then **Upload Settings To Station**

Setting File Upload

Select the station(s) to upload the Setting File(s):

Select	Number	Name	Location	Station Type	Status
<input checked="" type="checkbox"/>	101	Front Desk		IX-MV7-*	- Success
<input type="checkbox"/>	102	Security Desk		IX-MV7-*	- Success
<input type="checkbox"/>	201	IX-DV - Front Door		IX-DV, IX-DVF(-*)	- Success
<input type="checkbox"/>	202	IX-DVF-2RA - Parking Lot		IX-DV, IX-DVF(-*)	- Success
<input type="checkbox"/>	203	IX-SS-2G - Employee Door		IX-SS-2G	- Success
<input type="checkbox"/>	204	IX-SS-2G - Side Entrance		IX-SS-2G	- Success
<input type="checkbox"/>	301	IX-RS - Hallway Station		IX-RS-*	- Success

Select Station by Type:

Select file type to be uploaded:

3.2 - Select Stations

Click **Select** to check all stations in the system or select just the door station that was changed.

3.3 - Upload Settings

Click **Settings** to begin the upload process.

3.4 - Confirm Status

Using the **Status** column, confirm that each station has successfully been updated with their new setting file.

For more details about the features and information above, please contact Technical Support. Aiphone Corporation | www.aiphone.com | tech@aiphone.com | (800) 692-0200

Documents / Resources

	<p>AIPHONE IXW-HWCBP Hand Wave Call Button and Surface Mount Box [pdf] Instructions IXW-HWCBP Hand Wave Call Button and Surface Mount Box</p>
--	--

References

- [Home - Aiphone](#)