



AIPHONE IX Series IXW-MA IP Video Intercom System User Guide

[Home](#) » [AIPHONE](#) » AIPHONE IX Series IXW-MA IP Video Intercom System User Guide 

Contents

- [1 AIPHONE IX Series IXW-MA IP Video Intercom System](#)
- [2 Programming a New System to Include an IXW-MA](#)
- [3 Station Customization](#)
- [4 Association](#)
- [5 Export Settings](#)
- [6 Adding an IXW-MA to an Already Existing System](#)
- [7 SIF Settings](#)
- [8 EXW-MA Relay Output Settings](#)
- [9 Uploading Settings to Stations](#)
- [10 Exporting the Settings](#)
- [11 Documents / Resources](#)
 - [11.1 References](#)
- [12 Related Posts](#)

AIPHONE

AIPHONE IX Series IXW-MA IP Video Intercom System



ATTENTION

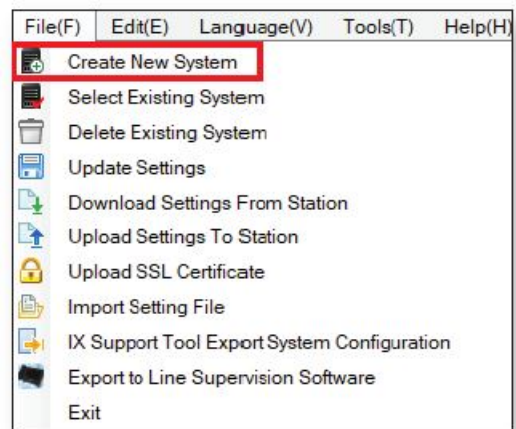
This is an abbreviated programming manual addressing basic IXW-MA program settings using IX Support Tool. A complete set of instructions (IX Web Setting Manual / IX Operation Manual / IX Support Tool Setting Manual) can be found at www.aiphone.com/IX.

For more details about the features and information above, please contact Technical Support. Aiphone Corporation | www.aiphone.com | tech@aiphone.com | (8 00) 692-0200

The IXW-MA adaptor has 10 relay outputs that can be triggered by an event of an IX Series Station. This guide will walk through programming a system to include the IXW-MA, as well as programming the adaptor.

Programming a New System to Include an IXW-MA

Step 1: System Settings



- **Create New System**

Open-IX Support Tool. From the top menu bar click File and select Create New System.

- **New System**

Enter a System Name under System Settings and select the quantity for each station type under IX Support Tool Settings.

- **Creating the System**

Once each field of the New System page is filled appropriately, click Next.v

New System

System Settings

System Name ♦

IP Version:

Enter contact information (optional):

Installer Information: ♦

Displayed in CONTACT INFORMATION of IX-MV7-*

Owner Information: ♦

Notes: ♦

☐ Expanded System

Wizard Programming

☒ Yes ☐ No

Automatically configure door release for all stations?

☒ Yes ☐ No

IX Support Tool Settings ♦ Required Settings

Enter the number of stations ♦

Master Stations

IX-MV7-* Station(s)

IX-MV Station(s)

Video Stations

IX-DV, IX-DVF(-*) Station(s)

IX-EA, IX-EAU Station(s)

IX-DA, IX-DF(-*) Station(s)

Audio Stations

IX-SSA(-*) Station(s)

IX-SS-2G Station(s)

IX-FA Station(s)

IX-SPMIC Station(s)

IX-BA, IX-SS(-*) Station(s)

IX-RS-* Station(s)

Others

IXW-MA Station(s)

Station Customization

Support Tool will provide each station a default Station Name, four-digit Number, and IP Address starting from 192.168.1.10. To edit this information, click Station Details in the Advanced Settings section, shown below. To use the default information created by Support Tool, skip to Step 3

Station Details

Click Station Details to edit the Number, Name, and IP Address for each station.

System Configuration

1. Select the setting file to be linked with the chosen station:

Station Settings List							
Select	Number	Name	Location	Station Type	Hostname	IP Address	Associated
<input checked="" type="radio"/>	0001	Master Stations1		IX-MV7-*		192.168.1.10	-
<input type="radio"/>	0002	Master Stations2		IX-MV7-*		192.168.1.11	-
<input type="radio"/>	0003	Master Stations3		IX-MV		192.168.1.12	-
<input type="radio"/>	0004	Video Stations1		IX-DV, IX-DVF(-*)		192.168.1.13	-
<input type="radio"/>	0005	Video Stations2		IX-DA, IX-DF(-*)		192.168.1.14	-
<input type="radio"/>	0006	Audio Stations1		IX-SS-2G		192.168.1.15	-
<input type="radio"/>	0007	Handset Sub Station1		IX-RS-*		192.168.1.16	-
<input type="radio"/>	0008	I/O Adaptor1		IXW-MA		192.168.1.17	-

Advanced Settings

Address Book

Door Release

Station Details

Batch IP Address Configuration

System Management

Add New Station

Station Removal

Station Customization (continued)

- **Edit Station Details**

Edit the Number, Name, IP Address, and Subnet Mask for each station as needed.

Note: Do not fill in the Hostname.

- **Update Station Details**

Click OK to update the station details that were edited.

Station Details

Row

Previous

Next

Enter Number

Display

Changing the IP Address , Subnet Mask , IP Version , Static / DHCP will require the station to be re-associated. Once associated, the setting file will also need to be uploaded to the station(s).

Locations must be created in the Location Registry before they can be assigned to a Station.

Text in red are required settings.

#	Station Information				Network Settings										
	Identification				IP Address										
	Number	Name	Location	Station Type	Hostname	IP Version	Static / DHCP	IPv4 Address							
								IP Address				Subnet Mask			
								1	2	3	4	1	2	3	4
0001	101	IX-MV7-HB		IX-MV7-*		IPv4	Static	192	168	1	10	255	255	255	0
0002	102	IX-MV7-B		IX-MV7-*		IPv4	Static	192	168	1	11	255	255	255	0
0003	103	IX-MV		IX-MV		IPv4	Static	192	168	1	12	255	255	255	0
0004	201	IX-DV		IX-DV, IX-DVF(-*)		IPv4	Static	192	168	1	13	255	255	255	0
0005	202	IX-DA		IX-DA, IX-DF(-*)		IPv4	Static	192	168	1	14	255	255	255	0
0006	301	IX-SS-2G		IX-SS-2G		IPv4	Static	192	168	1	15	255	255	255	0
0007	302	IX-RS		IX-RS-*		IPv4	Static	192	168	1	16	255	255	255	0
0008	401	IXW-MA		IXW-MA		IPv4	Static	192	168	1	17	255	255	255	0

<

>

Location Registry

OK

Cancel

Association

The association process will link the information created in Support Tool with a station found on the network. Once associated, the station will receive its station name and network information after a short power cycle.

- **Select**

Select the setting file to be associated from the Station Settings List.

- **Select**

Select the scanned station to be associated with the selected file from the Station List.

- **Apply**

Click Apply to associate the selected station with the selected file. Repeat until all stations are associated.

1. Select the setting file to be linked with the chosen station:

Select	Number	Name	Location	Station Type	Hostname	IP Address	Associated
<input checked="" type="radio"/>	101	IX-MV7-HB		IX-MV7-*		192.168.1.10	Yes
<input type="radio"/>	102	IX-MV7-B		IX-MV7-*		192.168.1.11	Yes
<input type="radio"/>	103	IX-MV		IX-MV		192.168.1.12	Yes
<input type="radio"/>	201	IX-DV		IX-DV, IX-DVF(-*)		192.168.1.13	Yes
<input type="radio"/>	202	IX-DA		IX-DA, IX-DF(-*)		192.168.1.14	Yes
<input type="radio"/>	301	IX-SS-2G		IX-SS-2G		192.168.1.15	Yes
<input type="radio"/>	302	IX-RS		IX-RS-*		192.168.1.16	Yes
<input type="radio"/>	401	IXW-MA		IXW-MA		192.168.1.17	Yes

Advanced Settings

Address Book Door Release

Station Details Batch IP Address Configuration

System Management

Add New Station Station Removal

2. Select the station to associate with the setting file.

☐ Enter station MAC address: ☐ Different Networks

☒ Search and select station within local network: Station Search Protocol IPv4

Select	Number	Name	Location	Station Type	MAC address	Associated
<input checked="" type="radio"/>				IX-MV7-*	00:0B:AA:2F:02:DB	Yes
<input type="radio"/>				IX-MV7-*	00:0B:AA:2F:02:1A	Yes
<input type="radio"/>				IX-MV	00:0B:AA:17:1B:BA	Yes
<input type="radio"/>				IX-SS-2G	00:0B:AA:2C:01:DC	Yes
<input type="radio"/>				IX-RS-*	00:0B:AA:2D:00:14	Yes
<input type="radio"/>				IXW-MA	00:0B:AA:2E:00:01	Yes
<input type="radio"/>				IX-DV, IX-DVF(-*)	00:0B:AA:27:0B:E7	Yes
<input type="radio"/>				IX-DA, IX-DF(-*)	00:0B:AA:16:34:D6	Yes

Apply Associate Automatically Station Search

• Status

Confirm that each station has been successfully associated in the Status column.

• Next

If all stations show Success, click Next



Station(s) that have been associated with a setting file are listed below.

Select	Number	Name	Location	Station Type	IP Address	MAC address	Status
<input type="checkbox"/>	101	IX-MV7-HB		IX-MV7-*	192.168.1.10	00:0B:AA:2F:02:DB	Success
<input type="checkbox"/>	102	IX-MV7-B		IX-MV7-*	192.168.1.11	00:0B:AA:2F:02:1A	Success
<input type="checkbox"/>	103	IX-MV		IX-MV	192.168.1.12	00:0B:AA:17:1B:BA	Success
<input type="checkbox"/>	301	IX-SS-2G		IX-SS-2G	192.168.1.15	00:0B:AA:2C:01:DC	Success
<input type="checkbox"/>	201	IX-DV		IX-DV, IX-DVF(-*)	192.168.1.13	00:0B:AA:27:0B:E7	Success
<input type="checkbox"/>	202	IX-DA		IX-DA, IX-DF(-*)	192.168.1.14	00:0B:AA:16:34:D6	Success
<input type="checkbox"/>	302	IX-RS		IX-RS-*	192.168.1.16	00:0B:AA:2D:00:14	Success
<input type="checkbox"/>	401	IXW-MA		IXW-MA	192.168.1.17	00:0B:AA:2E:00:01	Success

Remove Association Retry Association

Back Next Cancel

Setting File Upload

Once each station has been associated with its individual station information, the setting file containing the rest of the system's information will need to be uploaded to each station. To upload the setting file, the programming PC will need to be in the same subnet as the associated stations. The PC's current IP address is listed in the bottom left-hand side of this window.

Note that without uploading a setting file, most functions and features will be unavailable to the stations.

- **Select**

Stations can be selected individually, or by Type. Choose All from the Select Station by Type drop down menu to upload to all stations. Then, click Select.

- **Start Upload**

Once station Status shows Available click Start Upload .

- **Next**

After successful upload, click Next

Setting File Upload

Select the station(s) to upload the Setting File(s): Connection Status 8/8

Station List							Text in red are required settings.
Select	Number	Name	Location	Station Type	IP Address	Status	
<input checked="" type="checkbox"/>	101	IX-MV7-HB		IX-MV7-*	192.168.1.10	Available	
<input checked="" type="checkbox"/>	102	IX-MV7-B		IX-MV7-*	192.168.1.11	Available	
<input checked="" type="checkbox"/>	103	IX-MV		IX-MV	192.168.1.12	Available	
<input checked="" type="checkbox"/>	201	IX-DV		IX-DV, IX-DVF(-*)	192.168.1.13	Available	
<input checked="" type="checkbox"/>	202	IX-DA		IX-DA, IX-DF(-*)	192.168.1.14	Available	
<input checked="" type="checkbox"/>	301	IX-SS-2G		IX-SS-2G	192.168.1.15	Available	
<input checked="" type="checkbox"/>	302	IX-RS		IX-RS-*	192.168.1.16	Available	
<input checked="" type="checkbox"/>	401	IXW-MA		IXW-MA	192.168.1.17	Available	

Select Station by Type: All Select Unselect

This PC's IP Address: 192.168.1.102 Manual Date / Time Setup Start Upload Next Finish

Note

The progress of each station will be displayed in the Status column. Unavailable stations may still be rebooting from the association process. If a station has rebooted and is still unavailable, ensure the programming PC is in the same subnet as the station.

Export Settings

The final step in the Programming Wizard is to create a copy of the system's setting file and export it to a secure location or external drive.

- **Export**

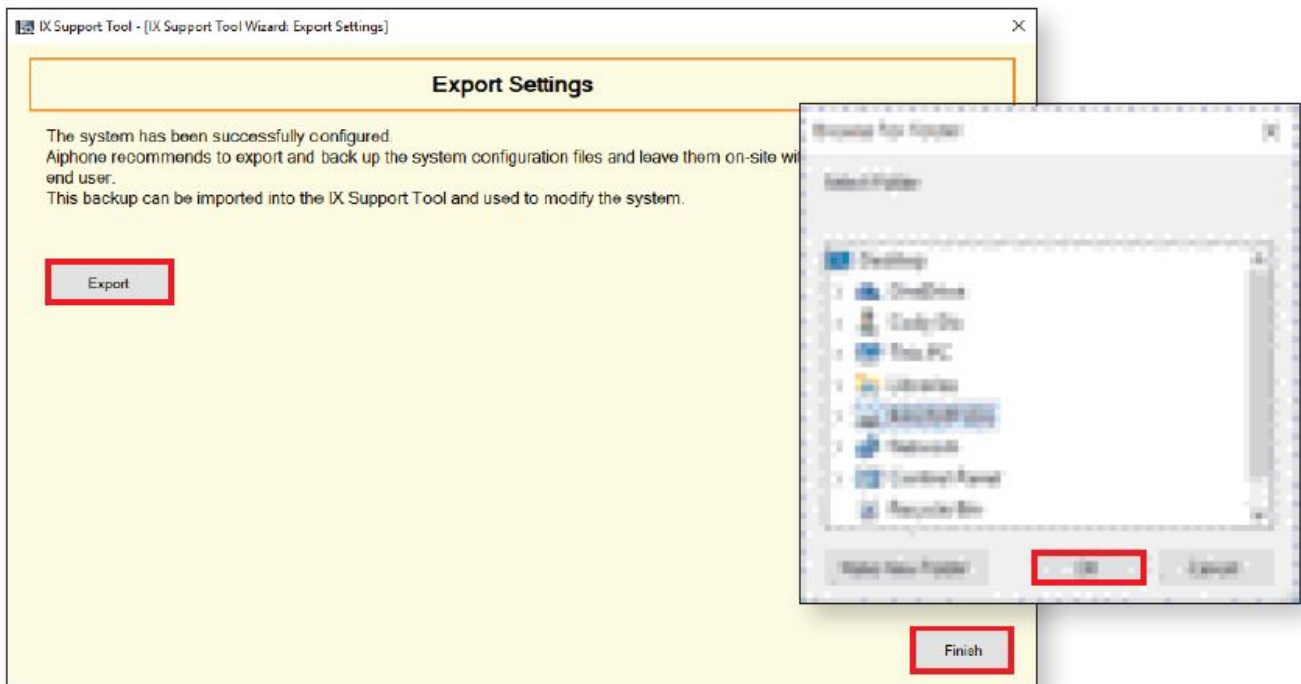
Click Export

- **Select Folder**

Select location to save the file then click OK

- **Finish**

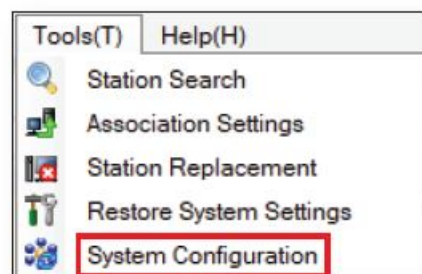
Click Finish



Note

If the original program file is lost, or the Support Tool is moved to a different PC, this copy can be used to access the system programming to add or remove a station, or to make programming changes.

Do not proceed with this section if the IXW-MA was already included when creating the new system. The steps below will walk through adding an IXW-MA relay adaptor to an existing system. The IXW-MA should be connected to the same network as the existing system before proceeding. Open IX Support Tool and select the existing system to be edited.



- **System Configuration**

Click Tools from the top menu bar and select System Configuration.

System Configuration

1. Select the setting file to be linked with the chosen station:

Station Settings List							
Select	Number	Name	Location	Station Type	Hostname	IP Address	Associated
<input type="radio"/>	101	IX-MV7-HB		IX-MV7-*		192.168.1.10	Yes
<input type="radio"/>	102	IX-MV7-B		IX-MV7-*		192.168.1.11	Yes
<input type="radio"/>	103	IX-MV		IX-MV		192.168.1.12	Yes
<input type="radio"/>	201	IX-DV		IX-DV, IX-DVF(-*)		192.168.1.13	Yes
<input type="radio"/>	202	IX-DA		IX-DA, IX-DF(-*)		192.168.1.14	Yes
<input type="radio"/>	301	IX-SS-2G		IX-SS-2G		192.168.1.15	Yes
<input type="radio"/>	302	IX-RS		IX-RS-*		192.168.1.16	Yes

Advanced Settings

Address Book

Door Release

Station Details

Batch IP Address Configuration

System Management

Add New Station

Station Removal

B - Add New Station
Click Add New Station.



Continue on page 6.

Adding an IXW-MA to an Already Existing System

- Select Station Type**

Select the IXW-MA using the Station Type drop-down and enter the quantity of stations to be added. Click Add

- Edit Station Information**

Edit the Number and Name for the new station to be added.

- Add**

Click Ok to add the station.

Add New Station

Select Station Type and enter the number of stations, then click "Add".
Up to 50 stations can be added at a time.

Station Type

IXW-MA

1

Station(s)

Add

Station Information				Text in red are required settings.
Number	Name	Location	Station Type	
401	IXW-MA		IXW-MA	

OK

Cancel

The added station will appear in the Station Settings list with the number and name assigned. The IP address assigned will be the next available in the IP address scheme of the existing system.

- **Select**

Select the setting file for the IXW-MA from the Station Settings List.

- **Select**

Select the IXW-MA to be associated with the selected file from the Station List.

- **Apply**

Click Apply to associate the selected station with the selected file.

- **Status**

Confirm that the IXW-MA has been successfully associated in the Status column.

- **Next**

If stations show Success, click Next

Station Settings List							
Select	Number	Name	Location	Station Type	Hostname	IP Address	Associated
<input type="radio"/>	101	IX-MV7-HB		IX-MV7-*		192.168.1.10	Yes
<input type="radio"/>	102	IX-MV7-B		IX-MV7-*		192.168.1.11	Yes
<input type="radio"/>	103	IX-MV		IX-MV		192.168.1.12	Yes
<input type="radio"/>	201	IX-DV		IX-DV, IX-DVF(-*)		192.168.1.13	Yes
<input type="radio"/>	202	IX-DA		IX-DA, IX-DF(-*)		192.168.1.14	Yes
<input type="radio"/>	301	IX-SS-2G		IX-SS-2G		192.168.1.15	Yes
<input type="radio"/>	302	IX-RS		IX-RS-*		192.168.1.16	Yes
<input checked="" type="radio"/>	401	IXW-MA		IXW-MA		192.168.1.17	-

Advanced Settings

Address Book

Door Release

Station Details

Batch IP Address Configuration

System Management

Add New Station

Station Removal

2. Select the station to associate with the setting file.

☐ Enter station MAC address:

☐ Different Networks

☒ Search and select station within local network:

Station Search Protocol IPv4

Station List						
Select	Number	Name	Location	Station Type	MAC address	Associated
<input type="radio"/>	101	IX-MV7-HB		IX-MV7-*	00:0B:AA:2F:02:DB	Yes
<input type="radio"/>	102	IX-MV7-B		IX-MV7-*	00:0B:AA:2F:02:1A	Yes
<input type="radio"/>	103	IX-MV		IX-MV	00:0B:AA:17:1B:BA	Yes
<input type="radio"/>	201	IX-DV		IX-DV, IX-DVF(-*)	00:0B:AA:27:08:E7	Yes
<input type="radio"/>	301	IX-SS-2G		IX-SS-2G	00:0B:AA:2C:01:DC	Yes
<input type="radio"/>	302	IX-RS		IX-RS-*	00:0B:AA:2D:00:14	Yes
<input type="radio"/>	202	IX-DA		IX-DA, IX-DF(-*)	00:0B:AA:16:34:D6	Yes
<input checked="" type="radio"/>				IXW-MA	00:0B:AA:2E:00:01	-

Apply

Associate Automatically

Station Search



Station(s) that have been associated with a setting file are listed below.

Associated Stations List							
Select	Number	Name	Location	Station Type	IP Address	MAC address	Status
<input type="checkbox"/>	101	IX-MV7-HB		IX-MV7-*	192.168.1.10	00:0B:AA:2F:02:DB	Success
<input type="checkbox"/>	102	IX-MV7-B		IX-MV7-*	192.168.1.11	00:0B:AA:2F:02:1A	Success
<input type="checkbox"/>	103	IX-MV		IX-MV	192.168.1.12	00:0B:AA:17:1B:BA	Success
<input type="checkbox"/>	301	IX-SS-2G		IX-SS-2G	192.168.1.15	00:0B:AA:2C:01:DC	Success
<input type="checkbox"/>	201	IX-DV		IX-DV, IX-DVF(-*)	192.168.1.13	00:0B:AA:27:0B:E7	Success
<input type="checkbox"/>	202	IX-DA		IX-DA, IX-DF(-*)	192.168.1.14	00:0B:AA:16:34:D6	Success
<input type="checkbox"/>	302	IX-RS		IX-RS-*	192.168.1.16	00:0B:AA:2D:00:14	Success
<input type="checkbox"/>	401	IXW-MA		IXW-MA	192.168.1.17	00:0B:AA:2E:00:01	Success

Remove Association

Retry Association

Back Next Cancel

SIF Settings

Step 1: Enabling SIF Functionality for IX Series Stations

The IXW-MA will only recognize the change contact transmission trigger. All other transmission triggers will be ignored by the adaptor. The transmission trigger is sent from the station receiving the release command to the IXW-MA. The following process outlines the settings required to send this SIF event by the door station. From the menu on the left, expand Function Settings and select SIF.

Note:

These settings will need to be configured for each source of the SIF event, not the IXW-MA.

- Option Input / Relay Output Settings
- Paging Settings
- Function Settings
 - Door Release
 - Network Camera Integration
 - Paging Settings
 - Bathroom Call
 - Email
 - CGI
 - SIF**
 - Record
 - Communication Audio Message
 - Chime

Station Information					Function Settings							
#	Number	Name	Location	Station Type	SIF	SIP URI Format	No.01 SIF Settings					
					SIF Functionality		Program Type	IPv4	IPv6	Destination Port	SSL	Connection
0001	101	IX-MV7-HB		IX-MV7-*	Disable	Disable						
0002	102	IX-MV7-B		IX-MV7-*	Disable	Disable						
0003	103	IX-MV		IX-MV	Disable							
0004	201	IX-DV		IX-DV, IX-DVF(-*)	Enable	Disable	0100	192.168.1.17		65014	Enable	Socket
0005	202	IX-DA		IX-DA, IX-DF(-*)	Disable							
0006	301	IX-SS-2G		IX-SS-2G	Disable	Disable						
0007	302	IX-RS		IX-RS-*	Disable	Disable						
0008	401	IXW-MA		IXW-MA	Disable	Disable						

- **Enable**

Enable SIF Functionality.

- **Program Type**

Enter 0100.

- **IPv4 Address**

Enter the IPv4 Address of the IXW-MA.

- **Destination Port**

Enter 65013 if SSL is Disabled, Enter 65014 if SSL is Enabled.

- **Connection**

Use the Connection drop-down menu to select Socket.

AIPHONE IX Support Tool

Category: Master Station Station Type: IX-MV7-*

Table View Row Previous Next [Display Settings] No.01 [Move to Related Settings] [Related Settings] Update

Station View

Station Information

#	Number	Name	Location	Station Type	Call	Begin Communication (Source)	Door Release Indication	End Communication	Change contact
0001	101	IX-MV7-HB		IX-MV7-*		<input type="checkbox"/>	<input type="checkbox"/>	<input type="checkbox"/>	<input type="checkbox"/>
0002	102	IX-MV7-B		IX-MV7-*		<input type="checkbox"/>	<input type="checkbox"/>	<input type="checkbox"/>	<input type="checkbox"/>
0003	103	IX-MV		IX-MV		<input type="checkbox"/>	<input type="checkbox"/>	<input type="checkbox"/>	<input type="checkbox"/>
0004	201	IX-DV		IX-DV, IX-DVF(*)		<input type="checkbox"/>	<input type="checkbox"/>	<input type="checkbox"/>	<input checked="" type="checkbox"/>
0005	202	IX-DA		IX-DA, IX-DF(*)		<input type="checkbox"/>	<input type="checkbox"/>	<input type="checkbox"/>	<input type="checkbox"/>
0006	301	IX-SS-2G		IX-SS-2G		<input type="checkbox"/>	<input type="checkbox"/>	<input type="checkbox"/>	<input type="checkbox"/>
0007	302	IX-RS		IX-RS*		<input type="checkbox"/>	<input type="checkbox"/>	<input type="checkbox"/>	<input type="checkbox"/>
0008	401	IXW-MA		IXW-MA		<input type="checkbox"/>	<input type="checkbox"/>	<input type="checkbox"/>	<input type="checkbox"/>

Text in red are required settings.

- **Scroll Right**

Scroll the window to the right until the Change contact column is displayed.

- **Change Contact**

Check the Change contact box for each station that will communicate with the IXW-MA.

- **Update**

Click Update to store the settings and continue to the next step.

- **Creating the SIF.ini File**

Creating a line of code, in the form of a .ini file, is required to allow an IX Series (IX-DA, IX-BA, IX-MV) device to communicate to the IXW-MA. The example below is shown using a common text editor (i.e. Notepad), and saving it with a .ini extension.

- **Program Type:** IXW-MA IP Address: Destination Port: SSL Y/N : Must be binary number 0100. IP address assigned to the IXW-MA .

Port number assigned on the IXW-MA. Enter 65013 if SSL is disabled, 65014 if SSL is enabled. Input 0 if disabled, input 1 if enabled.

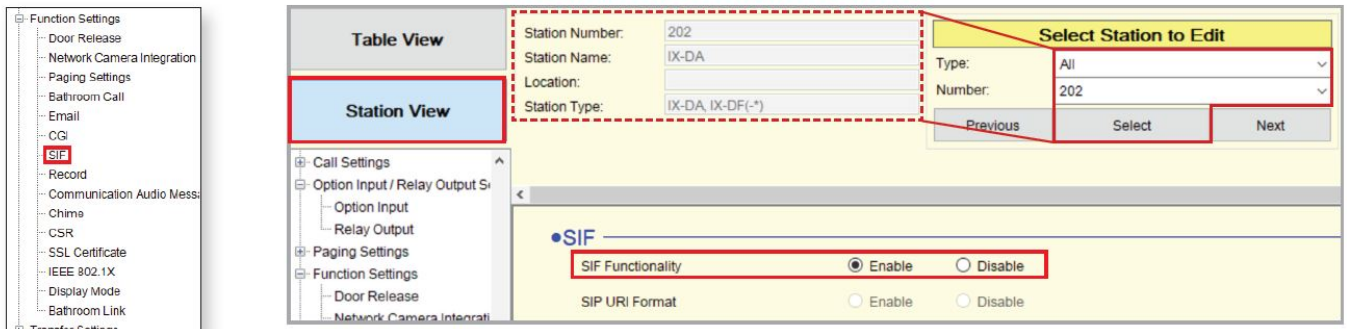
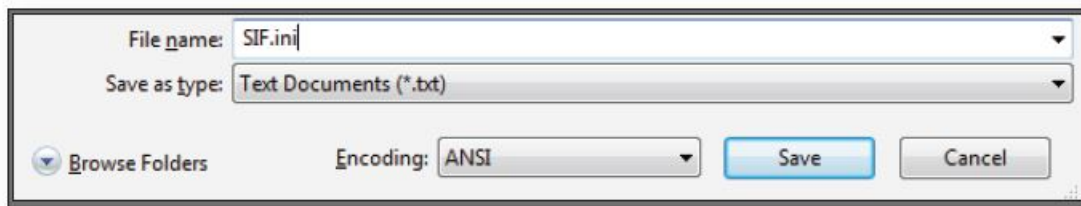
- **Example Text File:**

0100,192.168.1.17,65014,1

Program Type IXW-MA IP Address Destination Port SSL Y/N

Save the SIF file with a .ini extension (.ini must be typed manually) to a location on the PC being used for

programming the IX Series stations. This file must be uploaded to each device associated with the IXW-MA using the instructions that follow.



- **SIF Settings**

From the menu on the left, expand Function Settings and select SIF.

- **Station View**

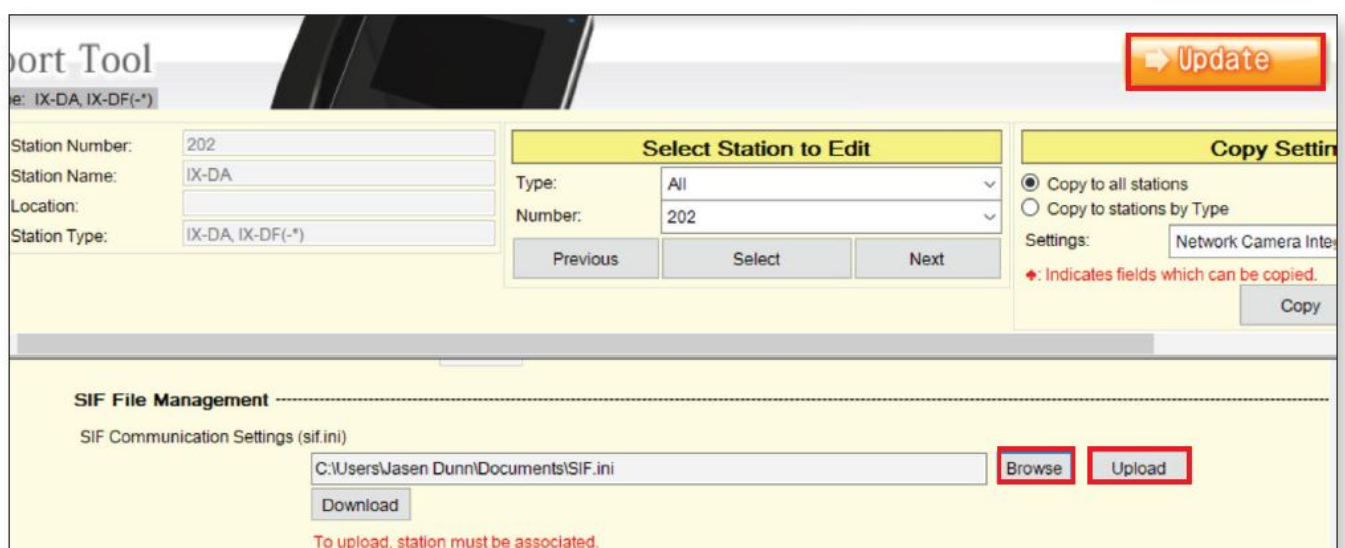
Click the Station View button at the top of the left menu.

- **Select Station**

Use the Number drop-down under Select Station to Edit and choose the IX Series door station. Click Select and ensure that the door station is shown in upper left of the screen.

- **Enable SIF**

Select the Enable radio button for SIF Functionality.



- **Scroll Down**

Scroll down until SIF File Management is displayed.

- **Browse**

Click the Browse button select the SIF.ini file that was created in Step 1.

- **Upload**

Click the Upload button to send the selected file to the station.

- **Update**

Click Update to save changes.

EXW-MA Relay Output Settings

Configuring the individual IXW-MA Relays

Table View

Row

Previous

Next

Enter Number

Display

[Display Settings]

Relay Output 1

[Weekly Schedule]

Schedule View Ad

Station View

Number of Notes:6

1. Contact Change SIF Event is associated with Change Contact of Relay Output 1 from SIF Origin
2. When set to blank, it will perform in association with the contact change of Relay Output 1 on a

Call Settings

Option Input / Relay Output Settings

Option Input

Relay Output

Paging Settings

Function Settings

Door Release

Network Camera Integration

Paging Settings

Bathroom Call

Email

CGI

SIF

Record

Communication Audio Message

Chime

#	Station Information				Option Input / Relay Output Settings	
	Identification				Relay Output	
	Number	Name	Loc	Station Type	Relay Output 1	
					Name	Function
0001	101	IX-MV7-HB		IX-MV7-*		Door Release
0002	102	IX-MV7-B		IX-MV7-*		Door Release
0003	103	IX-MV		IX-MV		Door Release
0004	201	IX-DV		IX-DV, IX-DVF(-)		Door Release
0005	202	IX-DA		IX-DA, IX-DF(-*)		Door Release
0006	301	IX-SS-2G		IX-SS-2G		Door Release
0007	302	IX-RS		IX-RS-*		Door Release
0008	401	IXW-MA		IXW-MA		Contact Change SIF Event

- **Relay Output**

From the menu on the left, expand Option Input / Relay Output Settings and select Relay Output.

- **Select Relay Output**

Use the Relay Output drop-down menu to select a relay output.

- **Function**

Use the Function drop-down menu to select Contact Change SIF Event for the IXW-MA.

AIPHONE IX Support Tool **Update**

Table View Row Previous Next [Display Settings] Relay Output 1 [Weekly Schedule] [Daily Schedule] Display Range 1 - 3

Station View Number of Notes: 6 1. Contact Change SIF Event is associated with Change Contact of Relay Output 1 from SIF Origination Station.
2. When set to blank, it will perform in association with the contact change of Relay Output 1 on all SIF command originating stations.

Station Information				Option Input / Relay Output Settings				
Identification				Relay Output				
#	Number	Name	Loc Station Type	Relay Output 1		Option Relay Control	Output Time Range	Output Time
				Number	Station List			
0001	101	IX-MV7-HB	IX-MV7-*			Disable	200-2000 [msec]	400
0002	102	IX-MV7-B	IX-MV7-*			Disable	200-2000 [msec]	400
0003	103	IX-MV	IX-MV				200-2000 [msec]	400
0004	201	IX-DV	IX-DV, IX-DVF(-)			Disable	200-2000 [msec]	400
0005	202	IX-DA	IX-DA, IX-DF(-*)				200-2000 [msec]	400
0006	301	IX-SS-2G	IX-SS-2G			Disable	200-2000 [msec]	400
0007	302	IX-RS	IX-RS-*			Disable	200-2000 [msec]	400
0008	401	IXW-MA	IXW-MA	201	<input type="button" value="Open"/>	Disable	200-2000 [msec]	400

Text in red are required settings.

• Contact Change SIF Event

Scroll the window to the right until Relay Output 1, Contact Change SIF Event is displayed.

• Select a Station

Click Open and select the Station Number of the station to communicate with the IXW-MA.

• Update

Click Update to save changes.

Uploading Settings to Stations

Setting File Upload

Select the station(s) to upload the Setting File(s):

Select	Number	Name	Loc Station Type	Status
<input checked="" type="checkbox"/>	101	IX-MV7-HB	IX-MV7-*	-
<input checked="" type="checkbox"/>	102	IX-MV7-B	IX-MV7-*	-
<input checked="" type="checkbox"/>	103	IX-MV	IX-MV	-
<input checked="" type="checkbox"/>	201	IX-DV	IX-DV, IX-DVF(-)	-
<input checked="" type="checkbox"/>	202	IX-DA	IX-DA, IX-DF(-*)	-
<input checked="" type="checkbox"/>	301	IX-SS-2G	IX-SS-2G	-
<input checked="" type="checkbox"/>	302	IX-RS	IX-RS-*	-
<input checked="" type="checkbox"/>	401	IXW-MA	IXW-MA	-

Text in red are required settings.

Select Station by Type:

Select file type to be uploaded

Success
Success
Success
Success
Success
Success
Success

• Upload

Click File from the top menu bar and select Upload Settings to Station.

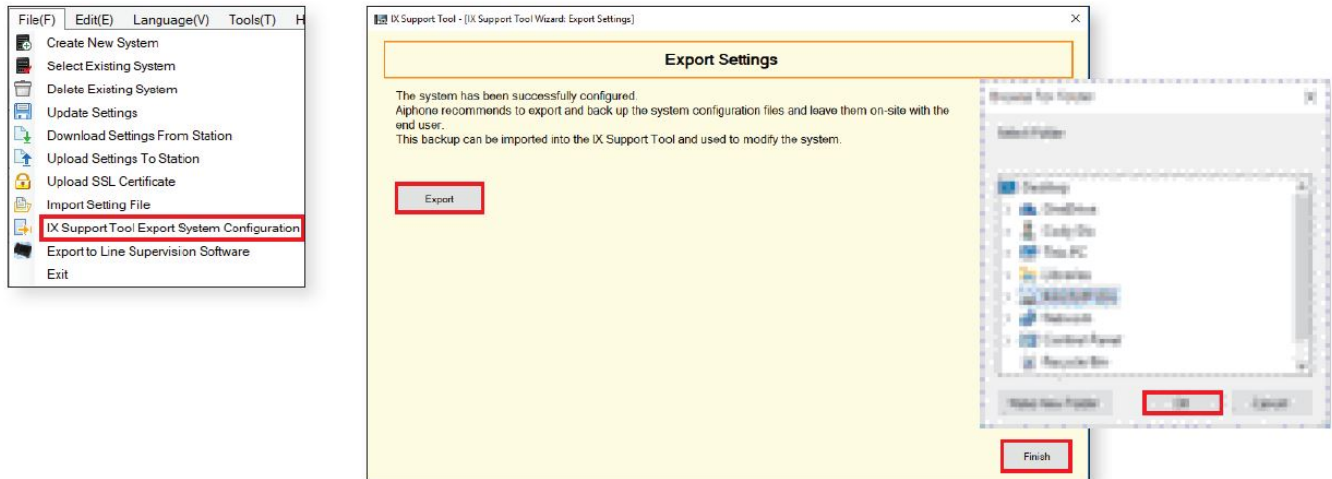
• Select

Stations can be selected individually, or by Type. Choose All from the Select Station by Type drop-down menu to upload to all stations. Then, click Select.

• Settings

Click Settings to upload the Setting Files to the selected stations.

Exporting the Settings



- **Export Settings**

Click File from the top menu bar and select Export System Configuration.

- **Export**

Click Export

- **Select Folder**

Select location to save the file then click OK .

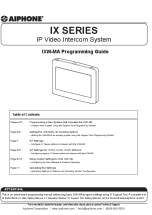
- **Finish**

Click Finish

Note

If the original program file is lost, or Support Tool is moved to a different PC, this copy can be used to access the system programming to add or remove a station, or to make programming changes.

Documents / Resources

	AIPHONE IX Series IXW-MA IP Video Intercom System [pdf] User Guide IX Series, IXW-MA, IP Video Intercom System
---	---

References

- [Home - Aiphone](#)
- [IX Series Peer-to-Peer IP Video Intercom with SIP Capability - Aiphone](#)