



AIO Group TD Series Integrated Touch Display User Guide

[Home](#) » [AIO Group](#) » AIO Group TD Series Integrated Touch Display User Guide 



Contents

- [1 AIO Group TD Series Integrated Touch Display User Guide](#)
- [2 1. TD Series](#)
- [3 2. Getting Started with TD Series](#)
- [4 3. Required Equipment \(Not Provided\)](#)
- [5 Documents / Resources](#)
 - [5.1 References](#)
- [6 Related Posts](#)

AIO Group TD Series Integrated Touch Display User Guide

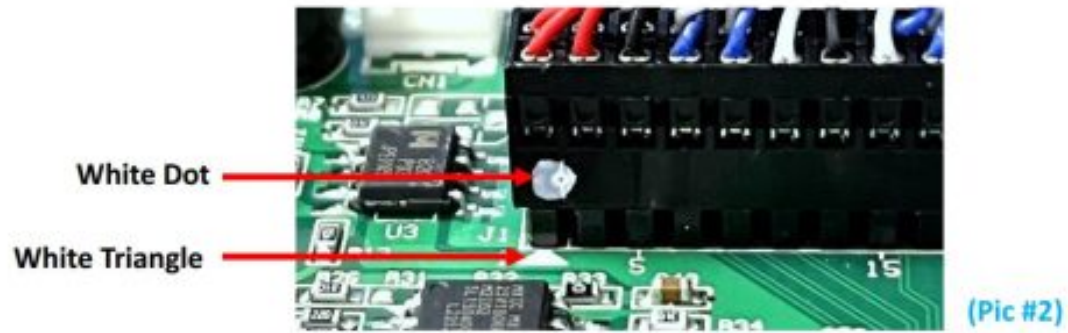
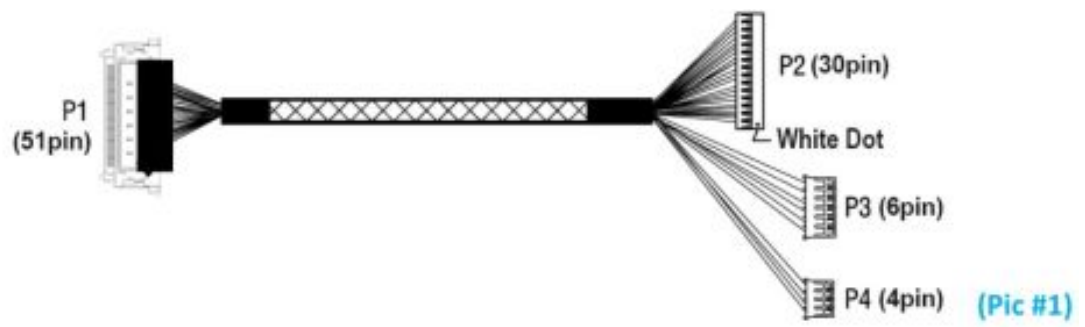


1. TD Series

The AIO TD series is an integrated touch display solution designed to simplify your development process and provide scalable solutions. This solution seamlessly combines LVDS, touch panel, and LED driver control signals into one connector. With uniform PIN definitions, the AIO TD ensures high compatibility, enabling effortless integration into various customer systems and significantly reducing setup time. It is designed to meet the needs of various environments, including outdoor, semi-outdoor, industrial, medical, public commercial, kiosk...etc.

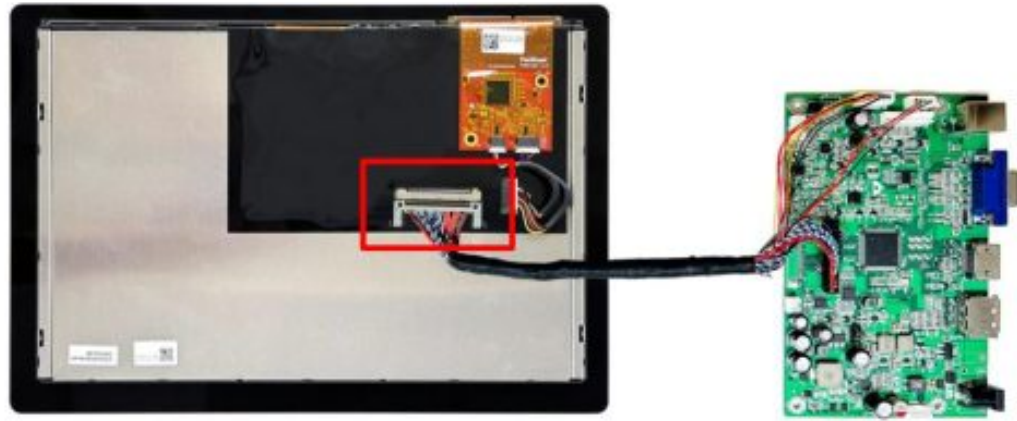
2. Getting Started with TD Series

- (1.) Connect P2 (30pin) to J1 on AD Board
*Align the white dot on P2 with the white triangle on J1
- (2.) Connect P3 (6pin) to CN4 on AD Board
- (3.) Connect P4 (4pin) to CN7 on AD Board



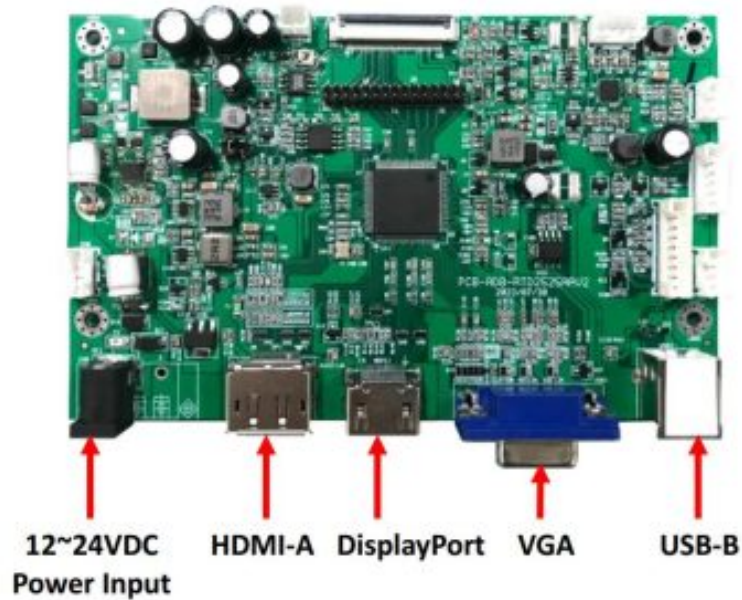
9PB0044 AD Board

(4.) Connect P1 (51pin) to LCD panel



(5.) Connect the HDMI/DP/VGA cable from your video/image source to AD Board

(6.) Apply power to AD Board with a 12/24VDC (5521 DC-Jack) +/- 5% power source



(7.) Power on the video/image source

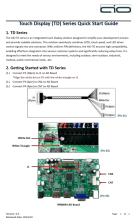
(8.) The LCD screen of the TD will be turn on and show the screen of the video/image source

3. Required Equipment (Not Provided)

- HDMI Type-A cable to connect to the AD Board for the video signal
- DP (DisplayPort) cable to connect to the AD Board for the video signal
- VGA cable to connect to the AD Board for the video signal
- USB Type- B cable to connect to the AD Board for the touch screen input
- Power source 12~24V DC (5521 DC-jack) for power input
- Video source for video output (HDMI or DP or VGA)

Read More About This Manual & Download PDF:

Documents / Resources

	<p>AIO Group TD Series Integrated Touch Display [pdf] User Guide</p> <p>TD Series Integrated Touch Display, TD Series, Integrated Touch Display, Touch Display, Display</p>
---	---

References

- [User Manual](#)

[Manuals+](#). [Privacy Policy](#)

This website is an independent publication and is neither affiliated with nor endorsed by any of the trademark owners. The "Bluetooth®" word mark and logos are registered trademarks owned by Bluetooth SIG, Inc. The "Wi-Fi®" word mark and logos are registered trademarks owned by the Wi-Fi Alliance. Any use of these marks on this website does not imply any affiliation with or endorsement.