



AIMiBO Wireless Display User Manual

[Home](#) » [AIMiBO](#) » AIMiBO Wireless Display User Manual 

Contents

- [1 AIMiBO Wireless Display](#)
- [2 Dos and Don' ts and Troubleshooting](#)
- [3 Step1.Hardware Installation](#)
- [4 STEP4.Mirroring Setup](#)
 - [4.1 More advanced settings](#)
- [5 Documents / Resources](#)
- [6 Related Posts](#)



AIMiBO Wireless Display



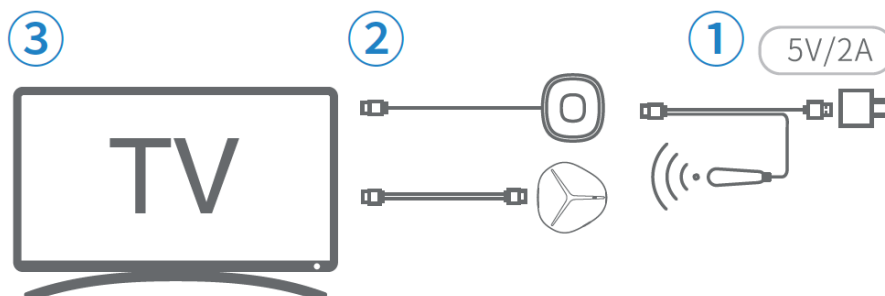
Mira Screen is a wireless screen mirroring receiver. With Mira Screen users can easily cast videos or games from a small screen to a big screen. MiraScreen supports multi OS mirroring which including Windows, macOS, Android, and iOS. Ongoing free firmware is provided to catch up latest devices. Please follow the user guide below to complete the setup. Happy mirroring!

Dos and Don'ts and Troubleshooting

1. This device is used for transmission of data via WiFi. Please don't cloak the device with metal.
2. The device is poor in wall-penetrating capability. Please don't Use it where there are partition walls.
3. For the availability of a good experience, the phone or computer is ideally 3-5 meters away from the device.
4. If the TV interface still does not display properly or SSID, Password, IP still don't appear after replacing the 5V2A power adapter, please contact After-Sales via post-sales email and we will address your issues as soon as possible.

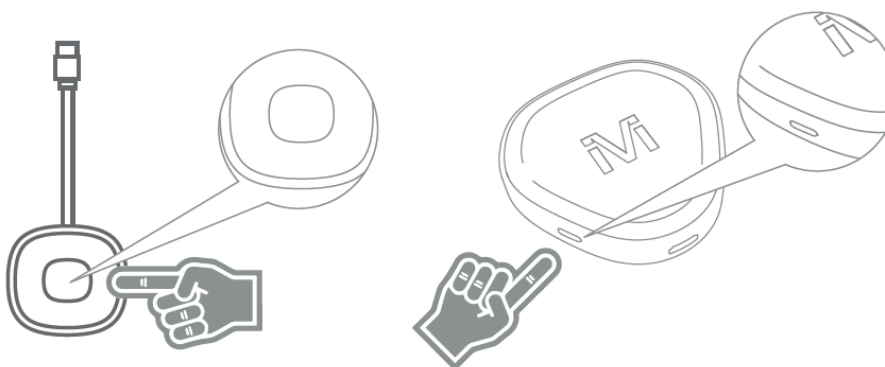
Technical support email: Support@Aimibo.tv

Step1.Hardware Installation



1. Plug the external WiFi adapter to the Wireless HDMI dongle, And then, plug the USB port into an external 5V/2A power adapter (not included)
2. Connect the wireless screen mirroring receiver into an HDMI input port on your TV.
3. Select Source. Select the correct HDMI source
 - For example, when HDMI is inserted into HDTV 1 interface, the HDMI 1 signal source needs to be selected, and the boot up diagram will appear on the display device.

Step2.Select the language



1. Single-click to select the language

2. Press for two seconds to enter the operation intertace

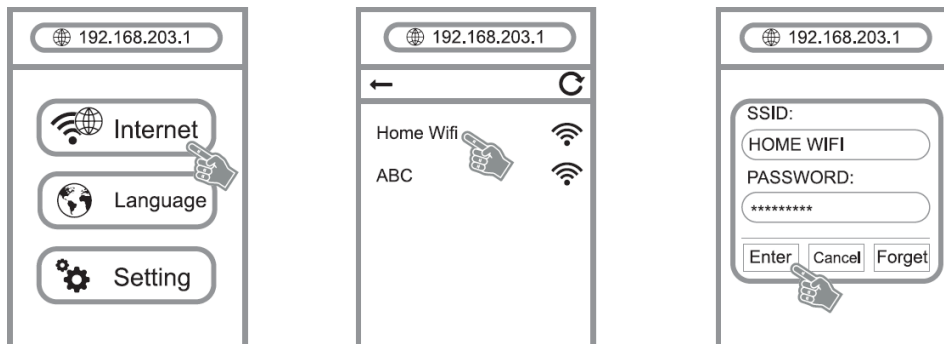
- After the first setting. you don' tneed to set it again after restarting. If you need to change the language, please restore the factory settings
- Long press for ten seconds to restore factory settings.

Step3.bevice Network settings

When using it for the first time, please give priority to connecting the device to the home WiFi router

1. Click WiFi on your phone settings page, connect your phone to Mira Screen Wi-Fi (Name is MiraScreen-xooox Default password is 12345678).
2. Turn on Phone/ Pad Browser, input 192. 168.203.1
3. Click Internet, Choose your Home WiFi.
4. Connect Input password and click Enter.

- The function applies to: iPhone/iPad/Android Devices.



Wireless network selection (2.4G/5G) (2.4G version users please ignore this option)

Wireless HDMI dongle, will operate on the same wireless frequency band as the home router to use a 5G wireless network, please connect the Wireless HDM dongle, to the 5G band of your home router.

STEP4.Mirroring Setup

Setup for iOS)

Direct Connect for ios

1. Connect your iPhone to your home Wi-Fi. Make sure both dongle and mobile phone are connected to the same Home wifi.
 - If the dongle fails to set Step3
Use iPhone/ iPad's Setting WiFi, find the Hot Spot of Mira Screen and connect it.
(Mira Screen-XXXX Password: 12345678)



2. Slide Screen and go to Apple's control center, click.
"Airplay Mirroring" ,then select Mira Screen



Setup for macOS

Direct connection for macOS

1. Connect your iPhone to your home Wi-Fi. Make sure dongle and Macbook are connected to the same Home wifi.
 - If the dongle fails to set Step3
Use iPhone/ iPad's Setting WiFi , find the Hot Spot of Mira screen and connect it.
Mira Screen-XXXX Password: 12345678(Modifiable)



2. Turn on Airplay mirroring icon On the right top of the desktop corner. Tap Mira Screen name to connect, and then mirroring works.



Setup for Android

Method 1(No need to set the Step3)

1. Open the phone settings
2. Find the Cast function of your phone
3. Select Mira Screen as the target

The cast function name of different brands may be different.

HUAWEI: Setting> Smart Assist > Multi-screen Interactive

Xiaomi: Settings>Connection&.Sharing-Cast (Turn on cast)

OnePlus: Settings – Bluetooth & device connection- cast

OPPO: Settings>Other wireless connections>Screencast

MEIZU: Setting-Display > Projection Screen

Lenovo: Setting Display > Wireless Display

SAMSUNG: Phone From Top To Bottom> Smart View

VIVO: Settings> Other networks and connections>Smart Mirroring-Connect to a TV>

Setting icon (Right top corner)>Screen mirroring

For more models, please contact our customer service

Method 2 Use Google home to connect dongle “Need to set step 3 (please confirm that your purchased product and mobile phone support Google home function)

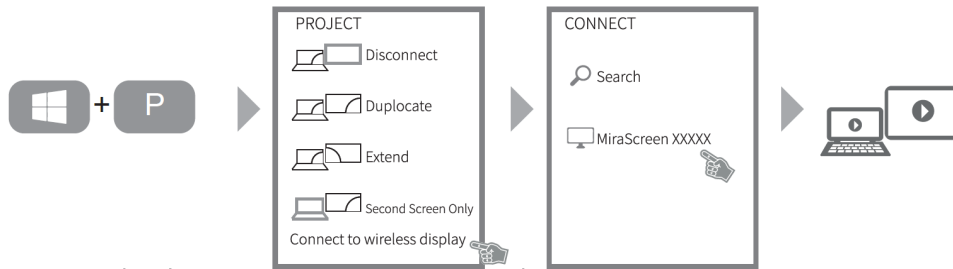
1. Turn on the Android phone WiFi and confirm that the phone WiFi and the device are connected to the same WiFi Home network.
2. Open Google Home, wait ten seconds will search the device (Mirascreen-xxxx), and Click it to implement screen mirroring

(If the Mira Screen-xxx can not be found please refresh the homepage of Google Home. verify that the wireless HDMI Dongle and your phone are in the same home Wi-Fi,

or restarting your phone or device).

Setup for Windows

Windows 8.1/10 Operational Steps (No need to set the Step3)



1. Press the shortcut "Win+P" on your keyboard.
2. Select "Connect to a wireless display."
3. Select "MiraScreen-xox to connect.

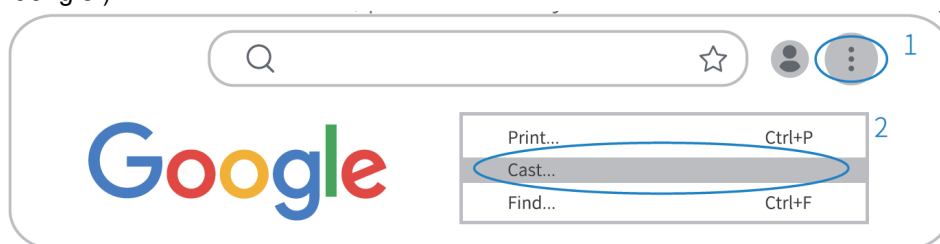
Windows 7 and above system operation steps

1. Download EZMira software installation. (Please refer to the right side)
2. Click WiFi, find the Mira Screen hotspot and connect. Such as: Mira Screen-XXXX Password: 12345678
3. Select Search Device, click the SSID name of the device to connect Screen Mirroring
4. To connect to the network, click the EZMira icon > Settings > Internet > select the connected WI-FI name > enter the password and connect

How to use Google chrome.

1. Click the Google chrome control button input the upper right corner of the Google Chrome interface.
2. Select Cast, and then select SSID (name of the WiFi device) while waiting for search.

(Ensure that your PC WiFi is connected to your home WiFi. If the device SSID is Not found, please restart your PC or wireless HDMI dongle.)



More advanced settings

Please Note: For the extend mode, it requires the app on your phone/ tablet has the direct screen mirror function, only in this situation, extend mode is available.

Step: Make sure both dongle and your device are connected to the same Home wifi. Click the screen projection button in the upper right corner of the video Apps, then select Mira Screen



EZMira Software Download

PC Request URL:

<https://mirascreen.com/pages/download-ezmira-for-windows>

Mobile phone Request URL:

<https://mirascreen.com/pages/download>

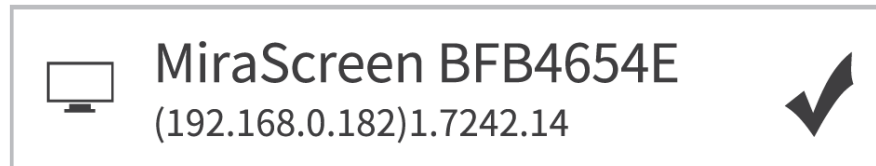
please scan the QR code on the TV screen to download EZMira app Mobile phone users can also download the "EZMira" App in Google Play.

How to use the screen mirroring device's EZ Mira APP

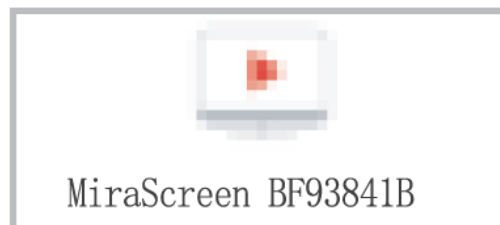
1. Open EZMira APP and click "EZMira APP"



2. Select Mira Screen.



FCC Warning:



This equipment has been tested and found to comply with the limits for a Class B digital device, pursuant to part 15 of the FCC Rules. These limits are designed to provide reasonable protection against harmful interference in a residential installation. This equipment generates, uses and can radiate radio frequency energy and, if not installed and used in accordance with the instructions, may cause harmful interference to radio communications. However, there is no guarantee that interference will not occur in a particular installation. If this equipment does cause harmful interference to radio or television reception, which can be determined by turning the equipment off and on, the user is encouraged to try to correct the interference by one or more of the following measures:

- Reorient or relocate the receiving antenna.
- Increase the separation between the equipment and receiver.
- Connect the equipment into an outlet on a circuit different from that to which the receiver is connected.
- Consult the dealer or an experienced radio/TV technician for help.

Caution: Any changes or modifications to this device not explicitly approved by manufacturer could void your authority to operate this equipment. This device complies with part 15 of the FCC Rules. Operation is subject to the following two conditions:

1. This device may not cause harmful interference, and
2. this device must accept any interference received, including interference that may cause undesired operation.

This equipment complies with FCC radiation exposure limits set forth for an uncontrolled environment. This equipment should be installed and operated with minimum distance 20cm between the radiator and your body.

ISED Statement


- This device complies with Industry Canada license-exempt RSS standard(s).

Operation is subject to the following two conditions:

1. This device may not cause interference, and
2. This device must accept any interference, including interference that may cause undesired operation of the device. The digital apparatus complies with Canadian CAN ICES-3 (B)/NMB-3(B).

This device meets the exemption from the routine evaluation limits in section 2.5 of RSS 102 and compliance with RSS 102 F exposure, users can obtain Canadian information on RF exposure and compliance. The device for operation in the band 5150-5250 MHz is only for indoor use to reduce the potential for harmful interference to co-channel mobile satellite systems.

Documents / Resources

	AIMIBO Wireless Display [pdf] User Manual Wireless Display, Display
---	--