



## AIM APF40R 40cm Pedestal Fan with Remote Control User Manual

[Home](#) » [AIM](#) » AIM APF40R 40cm Pedestal Fan with Remote Control User Manual 

AIM APF40R 40cm Pedestal Fan with Remote Control User Manual



## Contents

- [1 IMPORTANT INSTRUCTIONS](#)
- [2 ASSEMBLY INSTRUCTIONS](#)
- [3 HOW TO OPERATE](#)
- [4 CLEANING](#)
- [5 REMOVAL OF FRONT GRILL FOR CLEANING](#)
- [6 DESCRIPTION OF PARTS](#)
- [7 TECHNICAL SPECIFICATIONS](#)
- [8 2 YEAR LIMITED WARRANTY](#)
- [9 REPAIRS PROCEDURE](#)
- [10 Documents / Resources](#)
- [11 Related Posts](#)

## IMPORTANT INSTRUCTIONS

Read and save these important safety instructions before using this fan, when using electrical fans, basic safety precautions should always be followed including the following:

**WARNING:** To reduce the risk of fire or electrical shock, do not use this product with any solid-state speed control device. To reduce the risk of fire or electric shock and injury to persons, do not use in an open window.

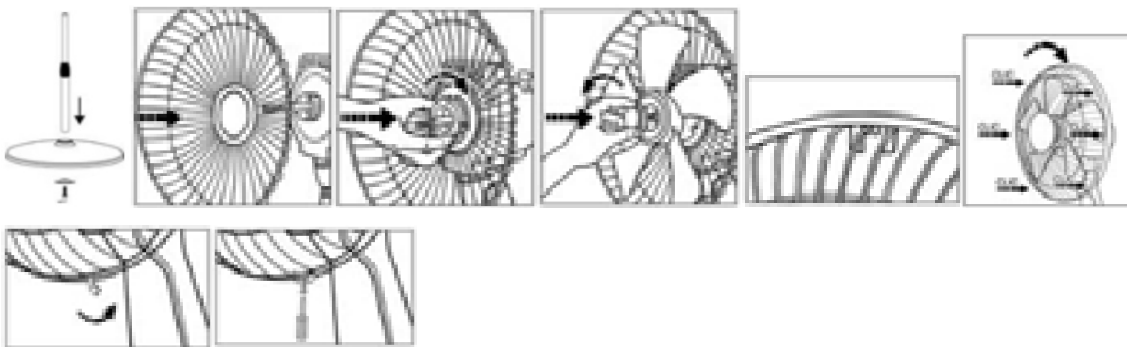
- Use this fan only as described in this manual. Other uses are not recommended and may cause fire or electric shock.
- This product is intended for HOUSEHOLD USE ONLY and not for commercial, industrial or outside use. To protect against electrical shock, do not place fan in an open window, immerse unit, plug or cord in water, or spray with liquids.
- Unplug the fan from the outlet when not in use, when moving fan from one location to another and/or before cleaning.
- Do not operate the fan in the presence of explosive and/or flammable fumes.
- Do not place the fan or any parts near an open flame, cooking or other heating fan.
- Avoid contact with moving fan parts.
- To disconnect the fan from the electrical power supply, grip the plug and pull it from the wall, never yank it from the cord.
- The use of attachments is not recommended and may cause hazards.
- Always use on a dry, level surface.
- Do not operate if the fan housing is removed or damaged.
- Do not operate any fan with a damaged cord or plug.
- Discard fan or return to an authorized service facility for examination and/or repair.
- Do not run cord under carpeting. Do not cover the cord with throw rugs, runners, or similar coverings. Do not route cord under furniture or fans.
- Arrange cord away from traffic area and where it will not be tripped over.
- The fan is not to be used by persons (including children) with reduced physical, sensory or mental capabilities, or lack of experience and knowledge, unless they have been given supervision or instruction.
- Children being supervised are not to play with the fan.
- This fan can be used by children aged from 8 years and above and persons with reduced physical, sensory or mental capabilities or lack of experience and knowledge if they have been given supervision or instruction

concerning use of the fan in a safe way and understand the hazards involved.

- Children shall not play with the fan.
- Cleaning and user maintenance should not be done by children without supervision.

## ASSEMBLY INSTRUCTIONS

1. Place the Base on a flat surface. Remove the Base Locking Mechanism from the Outer Pole and insert the Outer Pole onto the Base.
2. Turn over the Base with the Outer Pole inserted and secure by turning the Base Locking Mechanism clockwise until completely fastened.
3. Place the Motor Assembly and Control Panel onto the Inner Pole and secure by turning the Assembly Knob clockwise.
4. Remove the Rear Grill Mounting Nut by turning it counter-clockwise.
5. Place the Rear Grill onto the Motor Housing aligning the 3 Raised Knobs on the top of the Motor Housing with the 3 holes on the Grill.
6. Place the Rear Grill Mounting Nut and tighten by turning it clockwise.
7. Align the Blade onto the Shaft and secure it by tightening the Blade Knob counter-clockwise.
8. Fix the Front Grill and the Rear Grill with the circlip and fasten the ring around the grill. You will hear a click sound around the Grill.
9. Then use the Fasten Clip to tighten the Grill.
10. Secure further with the Screw and tighten with a screw driver.



## HOW TO OPERATE

1. Make sure that the fan is on a firm, level surface.
2. Making sure the speed control is at OFF position.
3. Insert the plug into the electrical power supply socket.

### On/Off:

To turn fan on, press the Power button.

### Sound Level/Speed Control:

Press the Fan button repeatedly to change level. This fan has up to five speeds to select from.

### Auto-off Timer:

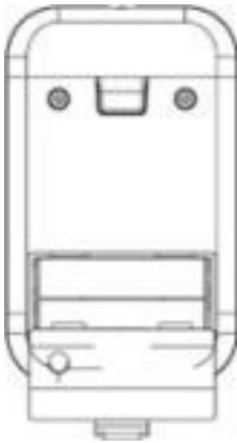
This setting will automatically turn your fan off after 1, 2, 4, or 8 hrs.

- **1 hour:** Press one time
- **2 hours:** Press two times
- **4 hours:** Press three times
- **8 hours:** Press four times
- **Turn Timer off:** Press five times or press power button.

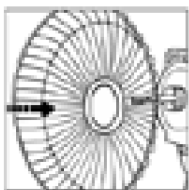
Oscillation can be activated by pushing the Oscillation Pin downward. The fan can be made to operate in a stationary position by gently pulling the Oscillation Pin up again.

## REMOTE CONTROL

1. Install batteries (not supplied) as shown. The battery is size “AAA”.
2. All the functions performed with the Remote-Control work identically to the Manual Controls.
3. Do not mix old and new batteries. Do not mix alkaline, standard (carbon-zinc) or rechargeable (nickel-cadmium) batteries.
4. DO NOT DISPOSE OF BATTERIES IN FIRE. BATTERIES MAY EXPLODE OR LEAK.



## CLEANING



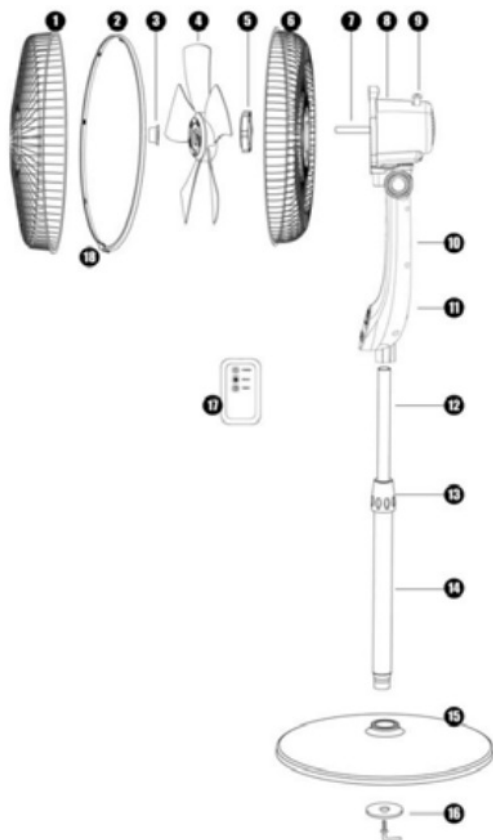
1. Be sure your fan is in the OFF position.
2. Unplug the fan before cleaning.
3. To clean inlet and outlet ribs, use a common household vacuum.
4. Do not use water to clean these parts of the Fan.
5. Do not disassemble for cleaning.
6. Do not immerse the fan in water and never allow water to enter the Motor Housing.
7. Do not use gasoline, paint thinner or other chemicals to clean the fan.

## REMOVAL OF FRONT GRILL FOR CLEANING

1. To access the Blade, remove the Front Grill and Blade Knob.

2. Clean the Blade, Front and Rear Grills with a soft, moist cloth.
3. Replace Blade, tighten Blade Knob and securely fasten the Front Grill again.

## DESCRIPTION OF PARTS



1. Front Grill
2. Grill Protective Ring
3. Blade Knob
4. Blade
5. Rear Grill Mounting Nut
6. Rear Grill
7. Shaft
8. Motor Assembly
9. Oscillating Pin
10. Remote Storage
11. Control Panel
12. Inner Pole
13. Height Adjuster
14. Outer Pole
15. Base
16. Base Locking Mechanism
17. Remote Control
18. Fasten Clip

## TECHNICAL SPECIFICATIONS

**Model:** APF40R  
**Power Supply:** 220.240V-50Hz  
**Rated Power:** 50 W

## 2 YEAR LIMITED WARRANTY

The Manufacturer hereby provides a warranty to the original purchaser of this product ('the consumer') that this product will be free of manufacturing defects in materials and workmanship which under normal, personal, family or household use (commercial use expressly excluded) manifest themselves within the 2 year from the date of purchase.

## EXCLUSIONS

- The warranty does not include and will not be construed to cover products damaged as a result of disaster, misuse, commercial use, not in accordance within the written instructions included with the product, abuse and/or any non-authorised modification of the product, incorrect installation of the product or normal wear and tear.
- Remote Controls do not fall under warranty.
- Insect infestation of the electrical or motor makes the claim invalid.
- Broken Glass or Customer abuse do not fall under the warranty.

## WAIVER

The warranty and the obligations of the Manufacturer provided herein are in lieu of, and the consumer, waives all other warranties, guarantees, conditions or liabilities, express or implied, arising by law or otherwise, including without limitation, any obligation of the manufacturer in respect of any injury, loss or damage (direct, indirect or consequential) arising out of the use of, or inability to use this product and whether or not occasioned by the manufacturer's negligence or any act or omission on its part.

## PROOF OF PURCHASE

Any claim in terms of the warranty must be supported by a proof of purchase. If such proof is not available, then notwithstanding anything to the contrary herein, the service agent's prevailing charges for services/repairs and/or spares will be payable by the Consumer upon collection of the repaired product. The Consumer should call the Pick n Pay CUSTOMER CARE number on 0860 30 30 30 (only in South Africa). Customers residing outside South Africa can return the product back to a Pick n Pay store. During the warranty period the product may only be serviced and/or repaired by the Manufacturer's duly authorised agent(s).

## REPAIRS PROCEDURE

Should you experience any faults on your Aim product, please adhere to the following procedure to have the fault rectified speedily and professionally. You can return the product to the store. Call the Pick n Pay CUSTOMER CARE number on 0860 30 30 30 (only in South Africa) to report the fault and make arrangements for the next steps.

**Note:** Should you live in an outlying area or outside South Africa, it may be necessary to return the product to the store nearest to you.

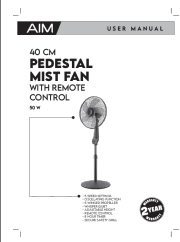
## COST OF REPAIRS

**UNDER WARRANTY** Any items still under warranty will be repaired free of charge, as long as it complies with the terms and conditions of the warranty (refer to "warranties" section in this manual). Any items that need to be repaired that are NOT covered in the warranty will be for the consumer's expense. A quote for the repair/replacement of these items will be provided to the consumer for approval prior to repairs being conducted.

## OUT OF WARRANTY

Any items that need to be repaired once the warranty has expired will be for the consumer's expense including call out fees. A quote for the repair/replacement of these items will be provided to the consumer for approval prior to repairs being conducted.

## Documents / Resources

	<p><a href="#">AIM APF40R 40cm Pedestal Fan with Remote Control</a> [pdf] User Manual</p> <p>APF40R 40cm Pedestal Fan with Remote Control, APF40R, 40cm Pedestal Fan with Remote Control, Fan with Remote Control, Remote Control</p>
---	---

Manuals+,