

**AIGOSTAR E27 Smart LED Bulb Bluetooth Mesh**



# AIGOSTAR E27 Smart LED Bulb Bluetooth Mesh Instruction Manual

[Home](#) » [aigostar](#) » AIGOSTAR E27 Smart LED Bulb Bluetooth Mesh Instruction Manual 

## Contents

- 1 AIGOSTAR E27 Smart LED Bulb Bluetooth Mesh
- 2 APP Usage Instructions
  - 2.1 Setup Method
- 3 Operating Instruction
- 4 Safety Cautions
- 5 Contact Information
- 6 Documents / Resources
  - 6.1 References



**AIGOSTAR E27 Smart LED Bulb Bluetooth Mesh**



### Smart LED Bulb(Bluetooth Mesh)

Thank you for purchasing the AIGOSTAR LED bulb. Please read this manual carefully before operating the product

## APP Usage Instructions

### Step 1: Application Installation

Find the “AigoSmart” application on the APP Store or Google Play, or download and install it by scanning the following QR code.



### Step 2: Application Registration

Enter your email/phone number to register for an account. If you already have an “AigoSmart” account, please log in directly.

### Step 3: Adding Devices to the “AigoSmart” APP

#### Note:

Before use, please turn on Bluetooth and ensure that your phone is connected to the network.

#### Setup Method

##### Setup Method I: Automatic Discovery

- First, power on the device. The device defaults to automatic setup mode within 10 minutes of powering on.

- Open the “AigoSmart” APP and click the “Add Device” button in the pop-up window to add the device. If the device is not found after waiting for a while, you can discover the device by clicking the “+” in the upper right corner.
- Click “Add Device” and select the model you want to add. Please wait patiently for the device to connect successfully. After the device is connected, you can modify the device name.

**Note:**

During setup, keep your phone as close to the device as possible. Please complete the above setup operations within 10 minutes of powering on the device.

**Setup Method II: Manual Setup**

If the device cannot be found or the setup fails, follow these steps:

1. Disconnect the device from power for more than 10 seconds, then reconnect it.
2. With the light off, perform “on-off-on-off-on” (wait for the light to turn on before turning it off, with each operation interval within 3 seconds).
3. Confirm that the light is flashing (if the light is not flashing, please retry the steps).
4. On the APP homepage, click the “+” in the upper right corner to enter the device addition page. Find the “Lighting (Bluetooth Mesh)” entry and follow the prompts to complete the setup.

**Note:**

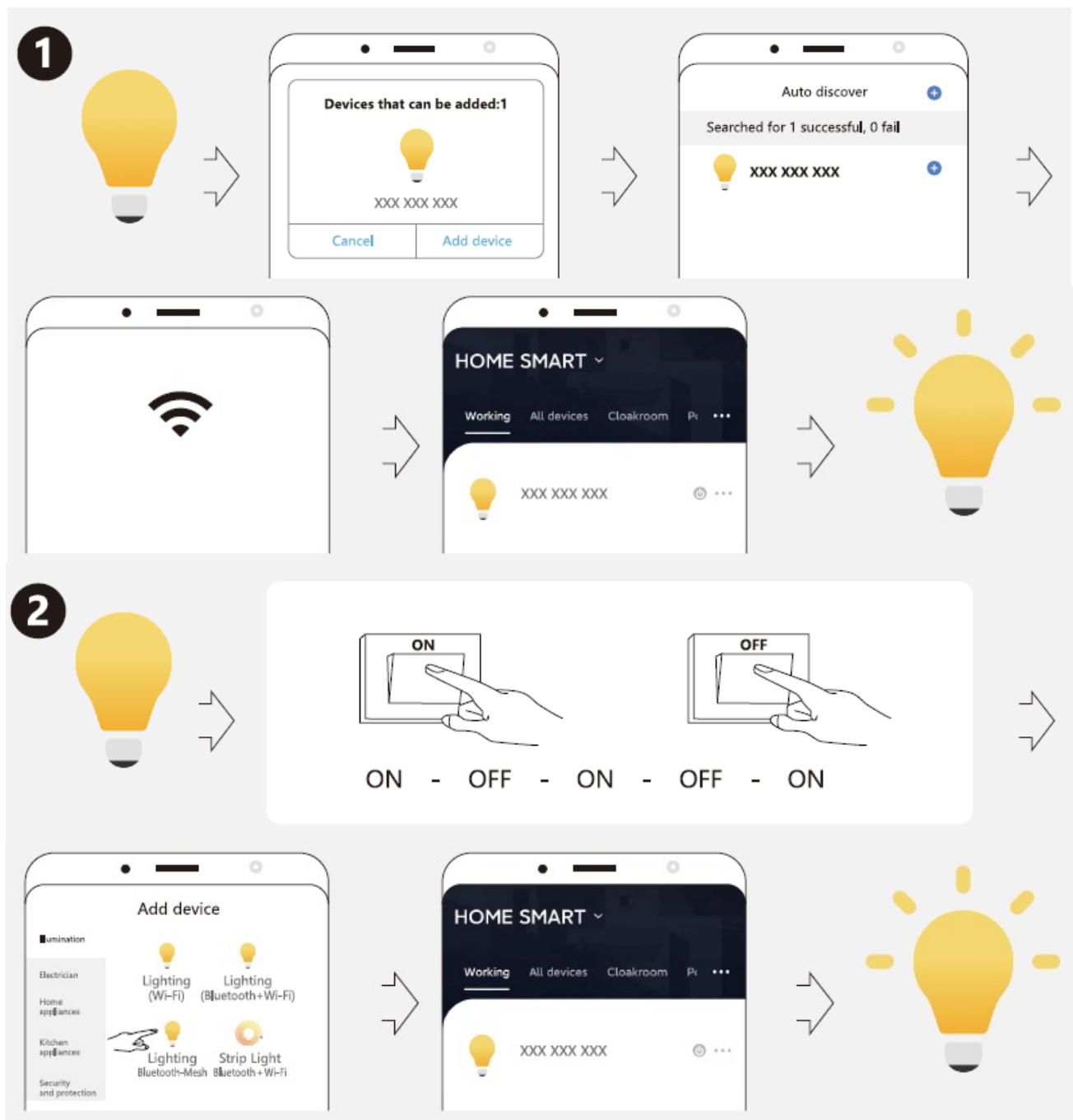
Please complete the above setup operations within 5 minutes of the light flashing.

**Step 4: Controlling the Device**

- After successful setup, the device will be displayed on the APP homepage.
- Click the device to enter the control page.
- Please scan the QR code for more detailed information on operating the device.



**Operating Instruction**



## Safety Cautions

1. There may be some differences in the display interface of some devices due to different functions.
2. The free "AigoSmart" APP is compatible with mobile devices. 10513.0, Android5.0 and above versions will provide a better experience.
3. This product supports Amazon Alexa. In the absence of a gateway, during the device networking phase, Alexa can discover the device (either Alexa or the app can be connected). The name you give to the device will be the name used for voice control on the Amazon Alexa homepage. After entering the details page, you can obtain the latest user guide in the app help. If you are unable to resolve your usage issues, you can also go to the help centre for feedback, and we will be happy to assist you.
4. Operating Frequency: 2.4GHz (2400-2483MHz), Maximum transmitted power: 8 dBm.
5. In an open area, the optimal distance for app control of this product is within 20m, and the distance between devices and device relays is 10m. Obstacles or other magnetic interference between devices may affect control effectiveness.

6. This product can be paired with our Bluetooth Mesh remote control. If you need a more convenient control experience, you can purchase it separately.
7. This product can be paired with our Bluetooth Mesh gateway. If you need remote control functionality, you can purchase it separately.

#### **WARNING:**

1. FOR INDOOR USE ONLY.
2. PLEASE DISCONNECT THE POWER BEFORE INSTALLATION.
3. DO NOT DISASSEMBLE THE LAMP BODY.

#### **Contact Information**

##### **ITALIA MARKET SRL**

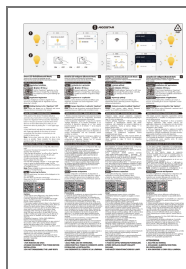
- VIA DELLE INDUSTRIE, 9/1 20883 MEZZAGO(MB), ITALIA
- P.IVA: IT10502730962
- <http://WWW.AIGOSTAR.COM>.



MADE IN CHINA.

---

#### **Documents / Resources**



**[AIGOSTAR E27 Smart LED Bulb Bluetooth Mesh](#) [pdf] Instruction Manual**  
E27 Smart LED Bulb Bluetooth Mesh, Smart LED Bulb Bluetooth Mesh, LED Bulb Bluetooth Mesh, Bulb Bluetooth Mesh, Bluetooth Mesh

#### **References**

- [User Manual](#)

[Manuals+](#), [Privacy Policy](#)

This website is an independent publication and is neither affiliated with nor endorsed by any of the trademark owners. The "Bluetooth®" word mark and logos are registered trademarks owned by Bluetooth SIG, Inc. The "Wi-Fi®" word mark and logos are registered trademarks owned by the Wi-Fi Alliance. Any use of these marks on this website does not imply any affiliation with or endorsement.