



## aidapt VP155FB Extendable Walking Cane with Strap Instructions

[Home](#) » [Aidapt](#) » aidapt VP155FB Extendable Walking Cane with Strap Instructions 

### Contents

- [1 aidapt VP155FB Extendable Walking Cane with Strap Instructions](#)
- [2 Fixing and Maintenance Instructions](#)
- [3 SERVICE WARRANTY](#)
- [4 Documents / Resources](#)
- [5 Related Posts](#)

### aidapt VP155FB Extendable Walking Cane with Strap Instructions



### Fixing and Maintenance Instructions

This file is available to view and download as a PDF at [www.aidapt.co.uk](http://www.aidapt.co.uk). Sight impaired customers can use a free PDF Reader (such as [adobe.com/reader](http://adobe.com/reader)) to zoom in and increase the text size for improved readability

## **INTRODUCTION**

Thank you for purchasing the Extendable Walking Cane with strap

**These instructions should be read carefully and left with the user of the product for future reference.**

**User Weight Limit:** 100KG

**Do NOT exceed weight limit stated – doing so could put the user at risk.**

## **INTENDED USE**

The Extendable Walking Cane is a stylish and ergonomic walking cane with a sturdy yet lightweight powder coated aluminium tube body with a rubber tip ferrule. It features a wooden handle with strap

## **FEATURES**

- Sturdy lightweight design
- Ergonomic wooden handle for comfort
- Height adjustable
- Includes a strap

## **BEFORE USE**

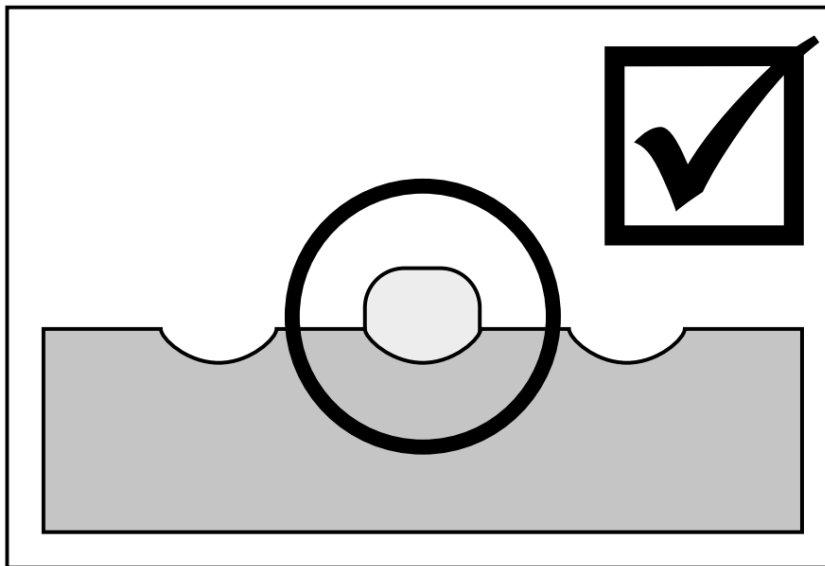
Carefully remove all packaging and check the product thoroughly for damage or obvious faults. Avoid using any knives or other sharp instruments as this may damage the surface of the product

## **HEIGHT ADJUSTMENT**

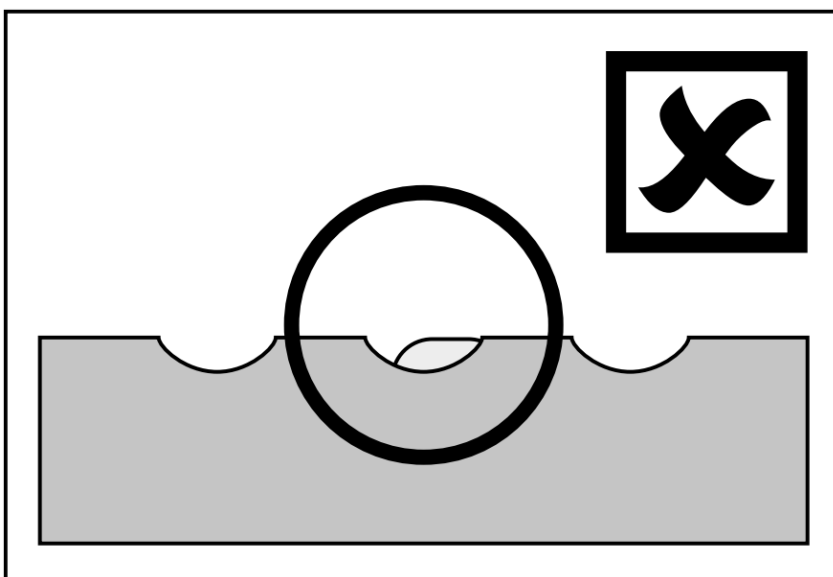
Follow the instructions below for height adjustment:

1. Grip walking cane with one hand whilst pushing the metal locking pin down with one hand so the locking pin retracts fully into the tube.
2. Select required height by adjusting the top section of the tube in an upwards and downwards motion and release the metal locking pin in front of the required hole position.
3. Prior to use, always ensure that the locking pin is fully engaged with the selected hole position **(fig. 1 and 2)** and, by applying downward pressure on the handle of the cane, test that the cane has been assembled correctly

**Fully Engaged**



**NOT Fully Engaged DO NOT USE**



**WARNING:** The Walking Cane must be checked periodically to ensure locking pin is securely in place.

**WARNING:** Please be careful on wet/slippery surfaces.

### **CLEANING**

All of the product components are manufactured from quality materials. However, it is very important that you only clean your Walking Cane using a non-abrasive cleaner or mild detergent with a soft cloth avoid using lime scale remover. Abrasive cleaners or abrasive cleaning pads will seriously damage your product beyond repair.

If to be disinfected by heat, one of the following three temperatures and duration of exposition can be used:

- a) a temperature of 90°C for 1 minute
- b) a temperature of 85°C for 3 minutes
- c) a temperature of 80°C for 10 minutes

### **CARE, MAINTENANCE AND YOUR OBLIGATION**

Please check the Walking Cane periodically for any signs of damage and if in doubt do not use and contact your supplier.

### **TECHNICAL INFORMATION**

**Width:** 12.5cm

**Length:** 3.5cm  
**Height:** 71 – 92cm  
**Net Weight:** 0.2kg

## IMPORTANT INFORMATION

The information given in this instruction booklet must not be taken as forming part of or establishing any contractual or other commitment by Aidapt Bathrooms Limited or its agents or its subsidiaries and no warranty or representation concerning the information is given

Please exercise common sense and do not take any unnecessary risks when using this product; as the user you must accept liability for safety when using the product.

## SERVICE WARRANTY

Aidapt Bathrooms Ltd guarantees the product free from defects in material and workmanship for a period of one year. Should this product be operated under conditions other than those recommended, or any attempts made to service or modify the product, then the warranty is rendered void. The product you buy may differ slightly from illustrations. This warranty is in addition to, and does not affect your statutory rights. Our guarantee is administered by our retailers.

If your product arrives damaged, you must contact the retailer from whom you bought it. The retailers contact details will be on the invoice that arrived with the product, or on the email you received when you placed the order. Do not contact Aidapt Bathrooms Ltd, only your retailer can arrange a replacement or refund. If your product fails within the guarantee period, please contact the retailer from whom you bought it.

If you have received your product and require technical help, please call our help desk on 01744 745 020 A copy of the instructions leaflet can be downloaded from our website

Aidapt Bathrooms Ltd, Lancots Lane, Sutton Oak, St Helens, WA9 3EX


**Telephone:** +44 (0) 1744 745 020

**Fax:** +44 (0) 1744 745 001

**Web:** [www.aidapt.com](http://www.aidapt.com)

**Email:** [sales@aidapt.co.uk](mailto:sales@aidapt.co.uk)

## Documents / Resources

 <p><b>VP155FB</b> VP155FB VP155FB</p>	<p><a href="#">aidapt VP155FB Extendable Walking Cane with Strap</a> [pdf] Instructions VP155FB, VP155FB Extendable Walking Cane with Strap, Extendable Walking Cane with Strap, Walking Cane with Strap, Cane with Strap, Strap</p>
---	--