



AIBOO A B Pairing Remote Control Light System Instruction Manual

[Home](#) » [AIBOO](#) » AIBOO A B Pairing Remote Control Light System Instruction Manual 

Contents

- [1 AIBOO A B Pairing Remote Control Light System](#)
- [2 Specifications](#)
- [3 Product Usage Instructions](#)
- [4 Pairing](#)
- [5 INSTALLATION INSTRUCTION](#)
- [6 Pairing](#)
- [7 FAQ](#)
- [8 Documents / Resources](#)
 - [8.1 References](#)
- [9 Related Posts](#)



AIBOO A B Pairing Remote Control Light System



Specifications

- **Pairing:** A/B (1)
- **Signaling control light:** Red and Green light
- **Brightness:** Adjustable (+/-)
- **Light Temperature:** Cool and Warm
- **Timer:** 30 minutes automatic turn-off
- **Features:** Night light, Light memory setting

Product Usage Instructions

Pairing

1. Press the A/B button on the remote control to switch between controlling the first line (A mode) and the second line (B mode).
2. To pair a light, turn it on for approximately 10 seconds, then press and hold until the light flashes.
3. If pairing in B mode, only lights in the B mode will be controlled by the remote. Use the A/B button to switch between modes.

Memory Setting

To set the intensity and color, press and hold the memory button for 3 seconds until the light flashes to save the setting. When turning off the light using the switch, wait for 15 seconds after setting with the memory button to save the memory.

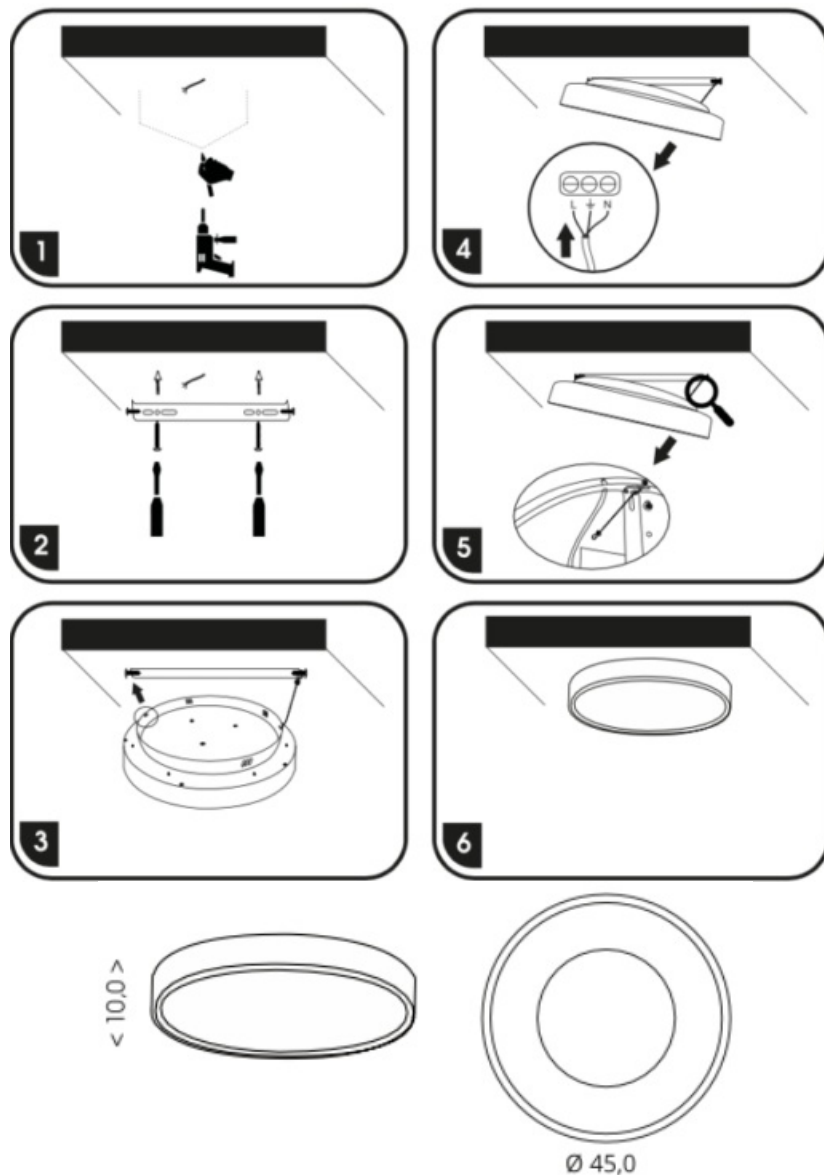
Timer:

Press the timer button to activate automatic turning off after 30 minutes.

Color Combinations:

The color combinations can also be switched using a switch on the product.

INSTALLATION INSTRUCTION




Pairing

- Signaling control light: red light and green light. All lights are shining red from factory settings.
- The red signal light on the remote control can remotely control one line of lights and the green one can control the second line.

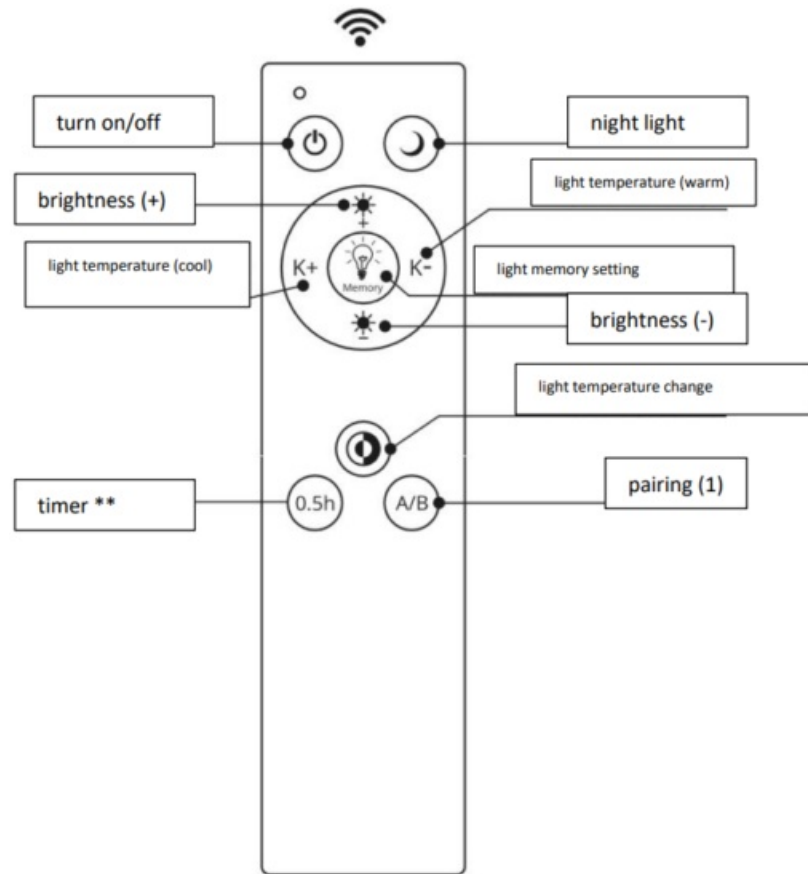
Setting method

1. Shortly press button A/B on the remote control and the signal light will turn green. The remote control is set to the B mode by the manufacturer.

2. For pairing turn the lamp for approx. 10 seconds, turn the lamp on and press  until the light flashes. In the case that you want to pair in the B mode, the remote control will control only lights in the B mode. Other lights won't be controlled.

3. Other lights that are not functioning are in the A mode. Press the A/B button, and the signal light on the remote control will turn red. Press the A/B button again, and the signal light on the remote control will turn green.

THE LIGHTS ARE ALREADY PAIRED WITH THE REMOTE CONTROL BY THE MANUFACTURER



Memory

- Set the intensity (color), press and hold the memory button for 3 seconds, and the light will flash (setting is saved).
- When turning the light off by the switch: after setting it with the memory button, turn the light off and leave it for 15 seconds, the memory is saved, then wait for at least 3 more seconds, in the opposite case, the light will change color and intensity.

Timer: by pressing the button, you will activate automatic turning off after 30 minute




The switching of color combinations can also be done via a switch.

FAQ

- **Q: How do I know which lights are controlled by each mode on the remote?**
 - A: The red signal light indicates control of lights in A mode, while the green signal light indicates control of lights in B mode.
- **Q: How can I change the brightness and light temperature?**

- A: Use the brightness (+/-) buttons to adjust brightness, and select between cool and warm light temperature settings.

Documents / Resources

	<p>AIBOO A B Pairing Remote Control Light System [pdf] Instruction Manual</p> <p>A B Pairing Remote Control Light System, A B Pairing Remote Control Light System, Pairing Remote Control Light System, Remote Control Light System, Control Light System, Light System, System</p>
---	---

References

- [User Manual](#)

[Manuals+](#), [Privacy Policy](#)

This website is an independent publication and is neither affiliated with nor endorsed by any of the trademark owners. The "Bluetooth®" word mark and logos are registered trademarks owned by Bluetooth SIG, Inc. The "Wi-Fi®" word mark and logos are registered trademarks owned by the Wi-Fi Alliance. Any use of these marks on this website does not imply any affiliation with or endorsement.