



aiadeng 554G Smart Watch Multiple Positioning Instruction Manual

[Home](#) » [aiadeng](#) » aiadeng 554G Smart Watch Multiple Positioning Instruction Manual 

Contents

- [1 aiadeng 554G Smart Watch Multiple Positioning](#)
- [2 Download and instal APP](#)
- [3 Register](#)
- [4 QR code](#)
- [5 Location](#)
- [6 Heart rate monitoring](#)
- [7 Temperature](#)
- [8 Telephoneinterception](#)
- [9 Documents / Resources](#)
 - [9.1 References](#)
- [10 Related Posts](#)



aiadeng 554G Smart Watch Multiple Positioning



Important Note

1. Upon receiving the watch, please install the SIM card correctly and ensure that the VOLTE function is enabled on the SIM card
2. To make a call, the country area code (such as +41 or 0041) needs to be added before the phone number. To set a contact person, the country area code needs to be added before the number
3. Click on the QR code icon on the watch menu, and the network will generate a binding QR code. Clicking on the QR code again will display the number and verification code, which can be bound through the APP.

Download and instal APP

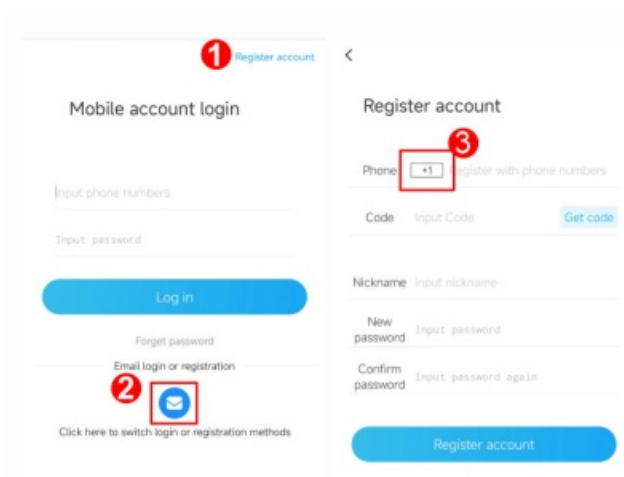
- Scan the QR code below and open the link in the browser to download the me. watch.app



me.watch

Download

Register



1. Support phone number or email registration
2. Please select the correct country number for mobile phone number registration
3. If you cannot receive the SMS verification code in your country, please choose your

QR code



1. When the watch plug-in card starts, there will be a download binding prompt. Download
2. Scanning this QR Code
3. Click the QR Code to view the QR information and enter it manually

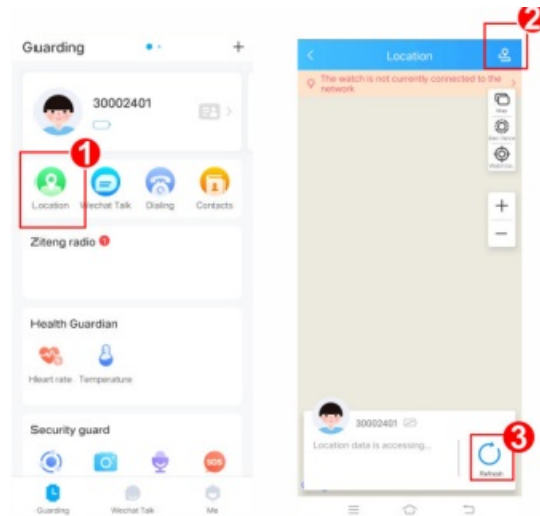
WeChat



1. Click on "QR code" in the watch menu bar to enter the watch interface

2. Use the “me. watch” app to add a watch and scan the QR code
3. Click on the QR code to view the device number information, which can be manually entered

Location



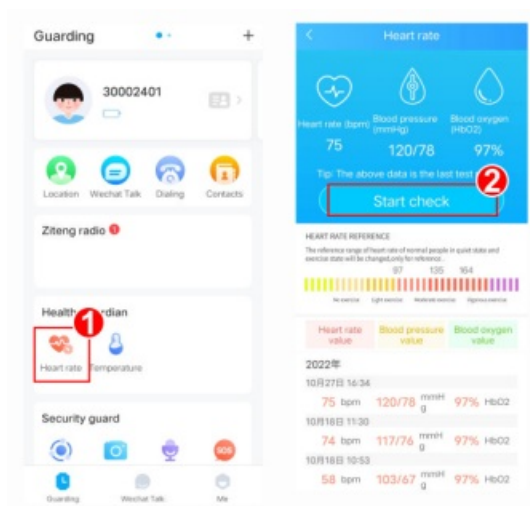
1. Please click “Positioning” in the “Guarding” interface
2. Click the icon in the upper-right corner to view the historical track.
3. Click the icon in lower right corner to refresh and view the real-time positioning

SOS



1. You can set three SOS one-touch numbers. When children need to, the watch will dial these three numbers in turn until they are connected
2. Don't forget to click “Save” to save after setting You can set three SOS one-touch numbers. When children need, the watch will use three numbers in turn until they are connected

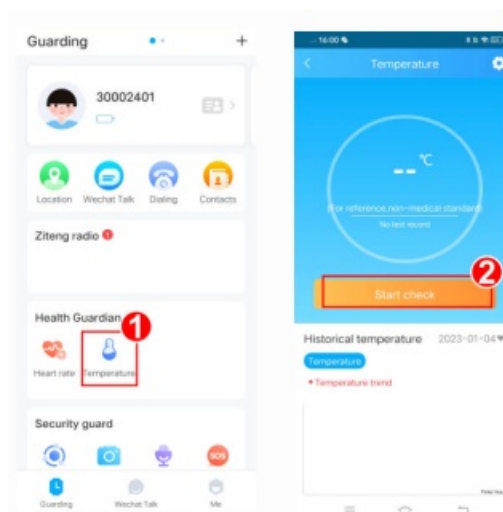
Heart rate monitoring



1. Please select "Heart Rate" in the "Guarding" interface to enter the monitoring interface.
2. Please click "Start check" to start detection.

Only watches that support the health detection function

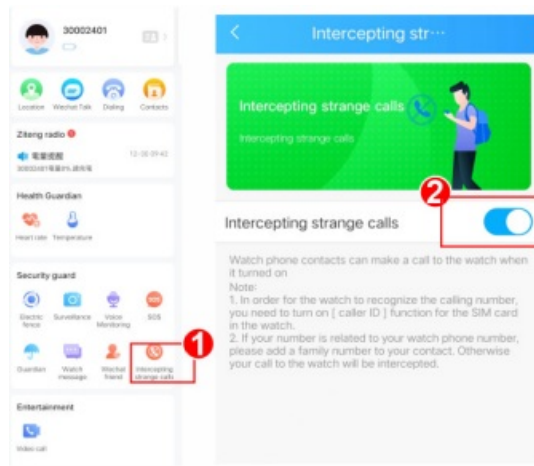
Temperature



1. Please select "Temperature" in the "Guarding" interface to enter the monitoring interface.
2. Please click "Start check" to start detection.

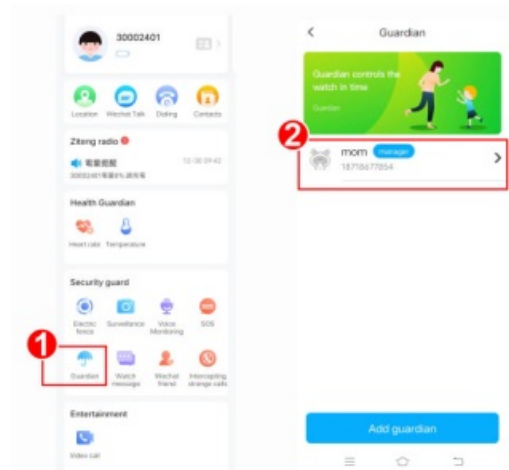
Only watches that support the health detection function

Telephone interception



1. Please select "Intercepting strange calls" in the Guarding
2. After clicking Open only the watch phone contacts can make a call to the watch when it is turned on.

Guardian



1. You can click "Guardian" in the "Guarding interface to set
2. You can add or modify the guardian information in this interface.

Please read the manual carefully before use to ensure proper installation and use

Documents / Resources

	<p>aiadeng 554G Smart Watch Multiple Positioning [pdf] Instruction Manual</p> <p>554G Smart Watch Multiple Positioning, 554G, Smart Watch Multiple Positioning, Watch Multiple Positioning, Multiple Positioning, Positioning</p>
--	---

References

- [User Manual](#)

Manuals+. Privacy Policy

This website is an independent publication and is neither affiliated with nor endorsed by any of the trademark owners. The "Bluetooth®" word mark and logos are registered trademarks owned by Bluetooth SIG, Inc. The "Wi-Fi®" word mark and logos are registered trademarks owned by the Wi-Fi Alliance. Any use of these marks on this website does not imply any affiliation with or endorsement.