



AHM V20240627 Grading Bucket User Manual

[Home](#) » [AHM](#) » AHM V20240627 Grading Bucket User Manual 

AHM V20240627 Grading Bucket



Contents

- 1 Safety Information
- 2 Specifications
- 3 Product Diagram
- 4 Installation
- 5 Operation
- 6 Maintenance
- 7 Documents / Resources
 - 7.1 References

Safety Information

The following symbols and safety signal words are used in this manual. DO obey the accompanying messages to avoid possible injury or death.



Indicates an imminently hazardous situation which, if not avoided, **WILL** result in death or serious injury.



Indicates a potentially hazardous situation which, if not avoided, **COULD** result in death or serious injury.



Indicates a potentially hazardous situation which, if not avoided, **MAY** result in minor or moderate injury. It may also be used to alert against unsafe practices.



Indicates practices or situations which may result in the malfunction of, or damage to equipment.

General Safety



- **ALWAYS** follow federal, state, and local laws, codes, and regulations concerning the use of construction machinery.
- Follow all other applicable instructions and precautions as stated in your excavator's manual.
- Read this manual before actually attaching this grading bucket to your compatible excavator. Familiarize yourself with the instructions that provide crucial information on the installation, operation, and maintenance.
- **ONLY** use with compatible excavator models. Though this grading bucket has a wide fitment, **DO** research compatibility before actually mounting this grading bucket. For details, see Specifications.
- **DO NOT** operate, inspect, or maintain the excavator when your faculties or judgment are impaired by alcohol, drugs, medicines, fatigue, or lack of sleep. **NEVER** allow any persons under such conditions to operate, inspect, or maintain this heavy machinery.
- Operating heavy equipment requires your full attention. Avoid distractions and remain focused on the task at hand.
- **IMMEDIATELY** cease to use and contact Customer Service if the grading bucket shows any sign of anomalies

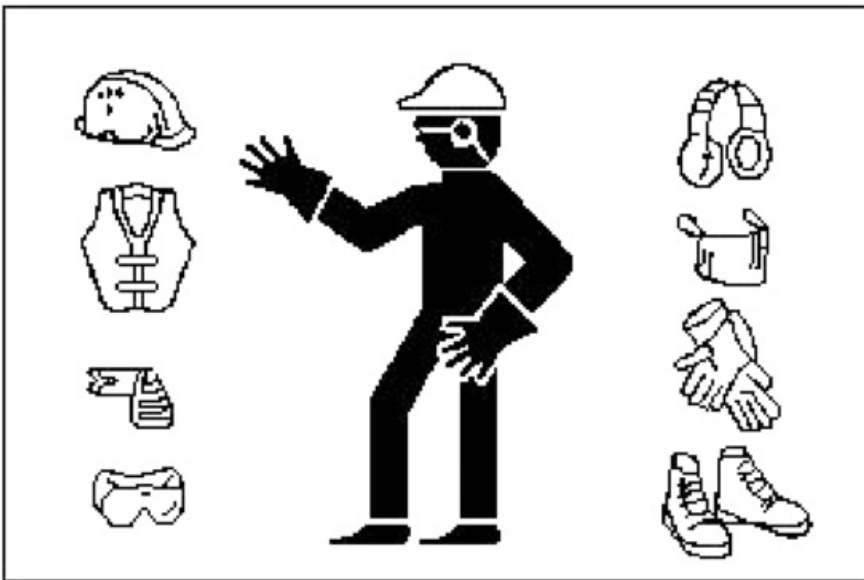
or malfunctions, say noise, vibration, breakage, etc. NEVER attempt to resume use if the issues remain unsolved.

Personal Safety

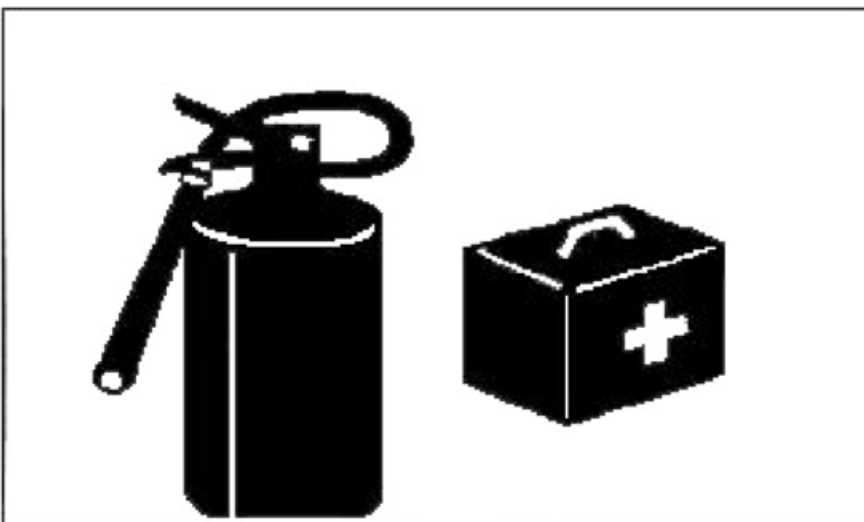


Warning

- **DO NOT** wear loose clothes or accessories that may get caught into the moving parts of your excavator in operation. Wear clothes that are oil-repellent. Replace them if grim or grease has started to build up. Fabrics coated or soaked with grim can burn in proximity to heated machinery.
- **ALWAYS** use personal protective equipment (PPE) suitable to your task. Always wear ANSI and OSHA-approved eye, breathing, and hand protection while using this product. Non slip and steel-toe footwear is also highly recommended. Other equipment such as ear, head, and body protection may also be necessary depending on your work, work environment, and other equipment.



- **ALWAYS** keep a fire extinguisher and first-aid kit in an easily accessible place. Familiarize yourself with the protocols for using the first-aid kit and operating the fire extinguisher. Ensure that you provide training to other individuals who will be operating the excavator. This ensures that everyone is prepared to handle potential emergencies effectively.



- Display the contact details of the nearest Emergency Room (ER) prominently in the operator's area. Make sure

that all personnel operating the excavator are well-informed about this information.

- Keep your hands and feet away from the moving components and attachment.

Operational Safety



Danger

- **ALWAYS** remain focused on the task at hand. Operating heavy equipment requires your full attention.
- **ONLY** operate the grading bucket from the excavator's cabin.
- Use two or more persons to attach the grading bucket to the excavator's arm.
- **NEVER** operate the excavator in an area with people present. You should maintain at least 100 yards of distance between the bucket and people, animals, or property.
- **DO NOT** use the grading bucket as a hoist. The bucket is not intended to lift an object. To do so may cause the excavator to turn over.
- Be extremely careful when working on inclines or near loose fill, rocks, and holes as they can cause tipping or upsetting which may result in serious injury or death.
- Be certain to avoid overhead electrical wires when operating the excavator. Contact with power lines may cause serious injury or death.
- **ALWAYS** remain focused on the task at hand. Operating heavy equipment requires your full attention.
- **ONLY** operate the grading bucket from the excavator's cabin.
- Use two or more persons to attach the grading bucket to the excavator's arm.
- **NEVER** operate the excavator in an area with people present. You should maintain at least 100 yards of distance between the bucket and people, animals, or property.
- **DO NOT** use the grading bucket as a hoist. The bucket is not intended to lift an object. To do so may cause the excavator to turn over.
- Be extremely careful when working on inclines or near loose fill, rocks, and holes as they can cause tipping or upsetting which may result in serious injury or death.
- Be certain to avoid overhead electrical wires when operating the excavator. Contact with power lines may cause serious injury or death.

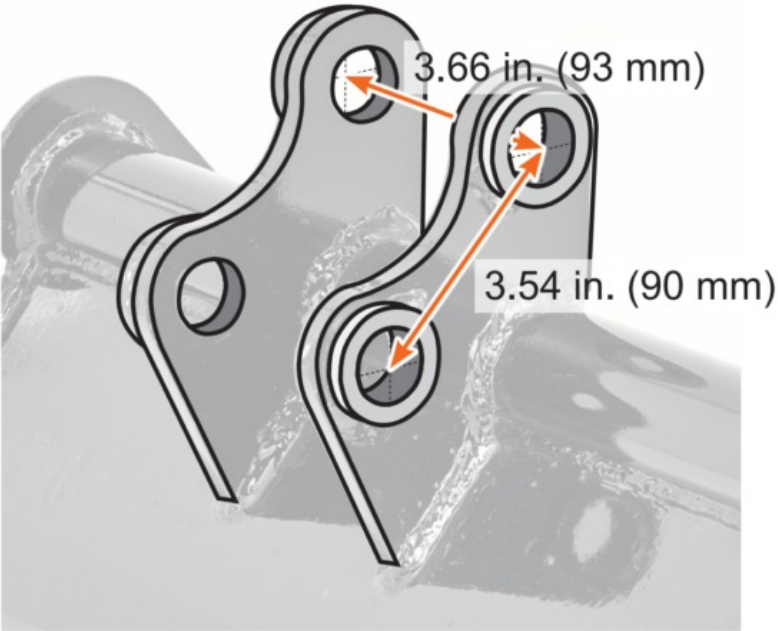
Maintenance Safety



Warning

- **ALWAYS** lower the attachment to the ground and shut off the engine before any maintenance.
- Wear personal protective equipment (PPE) appropriate and adequate for the work at all times.
- **ONLY** use the recommended lubricant for the bucket. For the specific type, see Maintenance.
- **DO NOT** make any alterations to the bucket.

Specifications

Bucket Volume		1.06 ft ³ (0.03 m ³)
Hinge Pin	Length (with Nut)	6.8 in. (172 mm)
	Length (without Nut)	6.2 in. (158 mm)
	Diameter	0.98 in. (25 mm)
Hinge Pin Hole Spacing		 <p>The diagram shows a close-up of the bucket's hinge mechanism. Two orange arrows indicate the center-to-center distances between the hinge pin holes. The top arrow is labeled '3.66 in. (93 mm)' and the bottom arrow is labeled '3.54 in. (90 mm)'.</p>
Width		19.7 in. (500 mm)
Depth		13 in. (330 mm)
Height		11 in. (280 mm)
Net Weight		42.7 lb. (19.35 kg)

Product Diagram



Installation



Warning

- **ALWAYS** use personal protective equipment (PPE) suitable to your task. Always wear ANSI and OSHA-approved eye, breathing, and hand protection, such as goggles and work gloves. Nonslip and steel-toe footwear is also highly recommended. Other equipment such as ear, head, and body protection may also be necessary depending on your work, work environment, and other equipment.
- **ONLY** mount the bucket with the help of more than 2 persons or with the assistance of a working, easily controllable, and reliable hoist. Doing it alone risks serious personal injuries.
- Keep your fingers clear of possible pinching points while mounting the bucket.

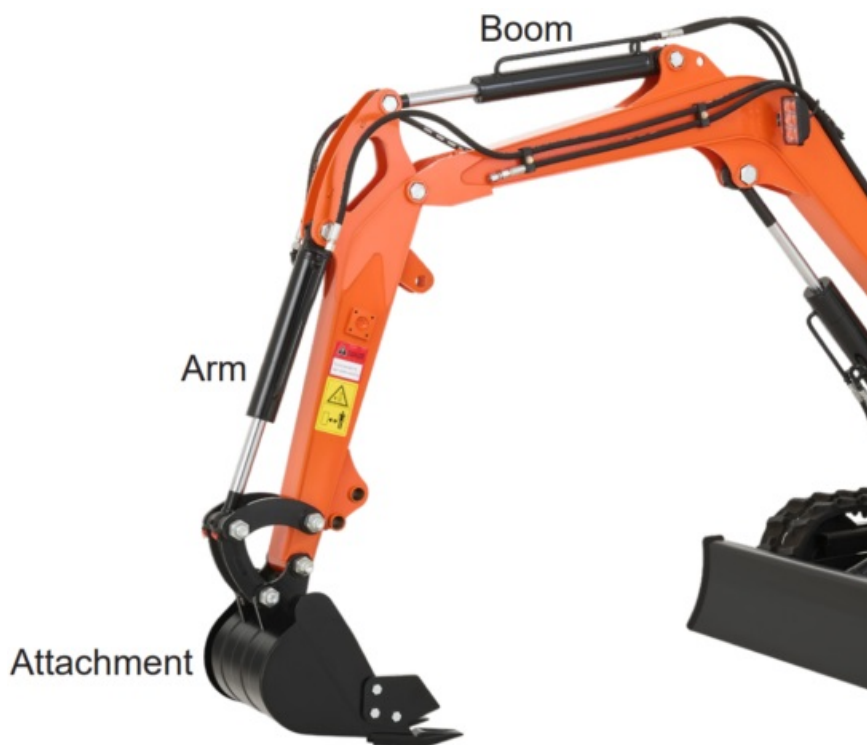
Tools Needed:

- Adjustable Wrench
- Hammer

Removing the Current Attachment

Note: This chapter only provides general guidance on the excavator's current attachment removal. For more specific information, refer to your excavator's manual or your attachment's manual.

1. Start the engine of the excavator following the normal protocols.
2. Park the excavator on level ground as shown, with the boom horizontal, the arm vertical, and lowering the attachment to the ground.



3. Shut off the engine.
4. Wait until the engine and hydraulic oil have cooled to ambient temperature.
5. Remove the bolts from the two pins connecting the attachment.



6. Tap out the pins with a hammer, keeping them clean.
7. Start the engine, raise the boom, and remove the current attachment.

Attaching the Bucket

1. Remove the preinstalled hinge pins and their nuts on the grading bucket.
2. Use 2 or more people or a hoist to stand the bucket up on a level surface.
3. Start the engine of the excavator following the normal protocols.
4. Drive the excavator to the rear of the bucket.
5. Align the hinge pin holes on the bucket with the ones on the bottom of the excavator arm by moving the boom and arm.
6. Restart the engine and test the bucket by performing light digging operations to confirm its stability.
7. Shut off the engine.
8. Insert the removed hinge pins through the holes and secure the pins with their removed nuts.



Operation



Warning

- **NEVER** allow anyone to operate the bucket until they have carefully read and understood this manual.
 - Before operating, carefully check for hazards and obstructions.
 - Keep all bystanders away from the work area, especially children.
1. Position the bucket level to the ground.
 2. Drive your excavator forward and insert the bucket into the pile of material.
 3. When the bucket is full, gently tilt the bucket backward to keep the load level and drive the excavator in reverse.
 4. Transport with the load at the lowest position to the dumping site.

Maintenance



Danger

ALWAYS lower the bucket to the ground and shut off the engine before any maintenance.



Warning

ALWAYS wear PPE appropriate and adequate for maintenance.

- Periodically clean the bucket, removing all mud and dirt.
- Lubricate the hinge pins with lithium grease every 10 hours of continuous operation. Shorten the schedule if the pins become unusually squeaky.
- Apply a light coating of oil to all exposed metal parts to prohibit corrosion.
- Periodically check the fasteners, retightening as needed.
- Repaint parts where paint is worn or scratched to prevent rust.
- Inspect for visible signs of wear, breakage, or damage. Replace or repair damaged components.
- Dispose of the used material and waste products from the replacement appropriately.
- Store this bucket in a safe and secure place away from direct sunlight and inaccessible to children.

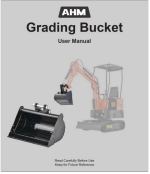
Contact Us

Thank you for choosing our products! If you have any questions or comments, contact us at help@cs-supportpro.com and we'll resolve your issue ASAP!

For a .pdf copy of the latest version of these instructions, use the appropriate app on your smartphone to scan the QR code to the right.



Documents / Resources

	<p>AHM V20240627 Grading Bucket [pdf] User Manual AE100E0C79F2227B, V20240627, V20240627 Grading Bucket, V20240627, Grading Bucket, Bucket</p>
---	---

References

- 🍌 [Transparent outsourced web hosting tech support |SupportPRO](#)
- [User Manual](#)

[Manuals+](#), [Privacy Policy](#)

This website is an independent publication and is neither affiliated with nor endorsed by any of the trademark owners. The "Bluetooth®" word mark and logos are registered trademarks owned by Bluetooth SIG, Inc. The "Wi-Fi®" word mark and logos are registered trademarks owned by the Wi-Fi Alliance. Any use of these marks on this website does not imply any affiliation with or endorsement.