



# AGPTEK BA02 Visible Bluetooth Transmitter and Receiver User Manual

[Home](#) » [AGPTEK](#) » AGPTEK BA02 Visible Bluetooth Transmitter and Receiver User Manual 

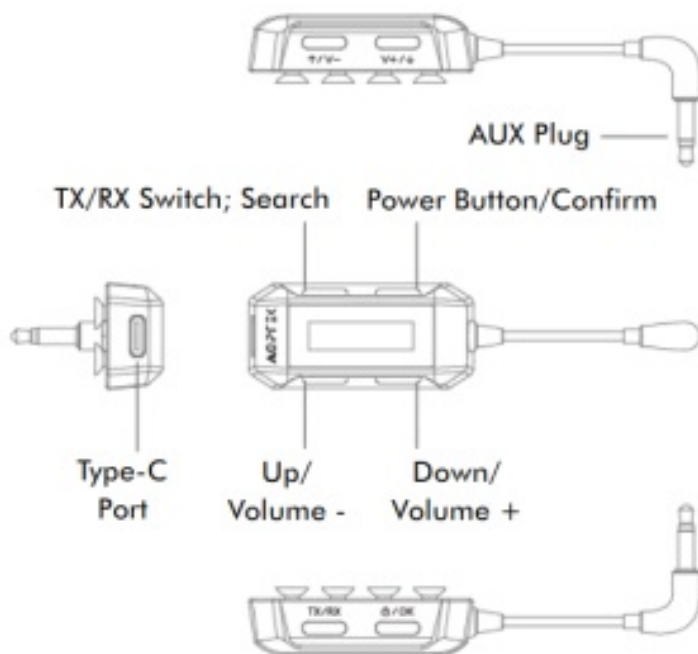
AGPTEK BA02 Visible Bluetooth Transmitter and Receiver User Manual



## Contents

- 1 Product Overview
- 2 TX: Transmitter | RX: Receiver
- 3 TX Mode Operation Guide
- 4 How To Use
- 5 Dual Pairing
- 6 RX Mode Operation Guide
- 7 How To Use
- 8 Dual Pairing
- 9 Restore Factory Settings & Clear Bluetooth Pairing List
- 10 Charging
- 11 Trouble Shooting
- 12 Specifications
- 13 Documents / Resources
- 14 Related Posts

## Product Overview



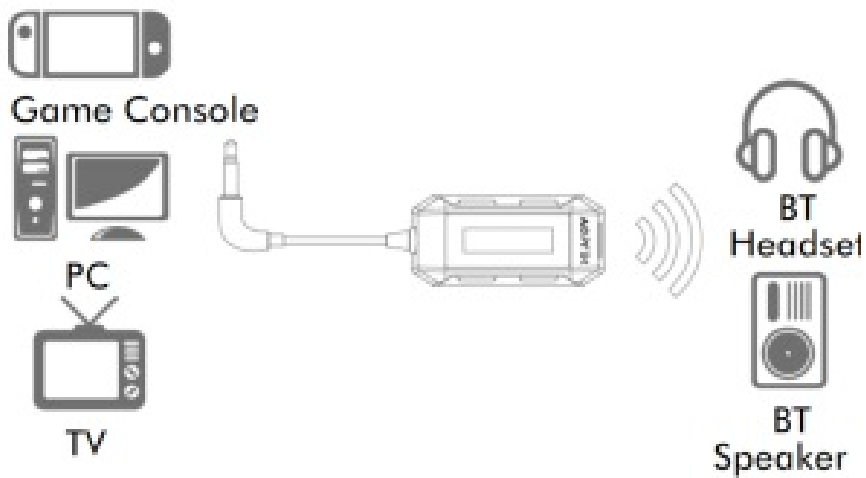
## TX: Transmitter | RX: Receiver

1. Power Button/Confirm: Long press for 3 seconds to turn on and off; Short press to confirm.
2. TX/RX Switch; Search: Long press for 5 seconds to switch TX/RX mode; Short press to search for connected devices.
3. Up/Volume -: Long press 5 seconds to turn down the volume; Short press to scroll up. 4. Down/Volume +: Long press 5 seconds to turn up the volume; Short press to scroll down.
4. AUX Plug: Inserted into PC, TV, game console (Switch, PS4).
5. Type-C Port: Used as a charging port or audio port. When the device is with built-in sound card, it support using Type-C data cable to connect and transmit audio.

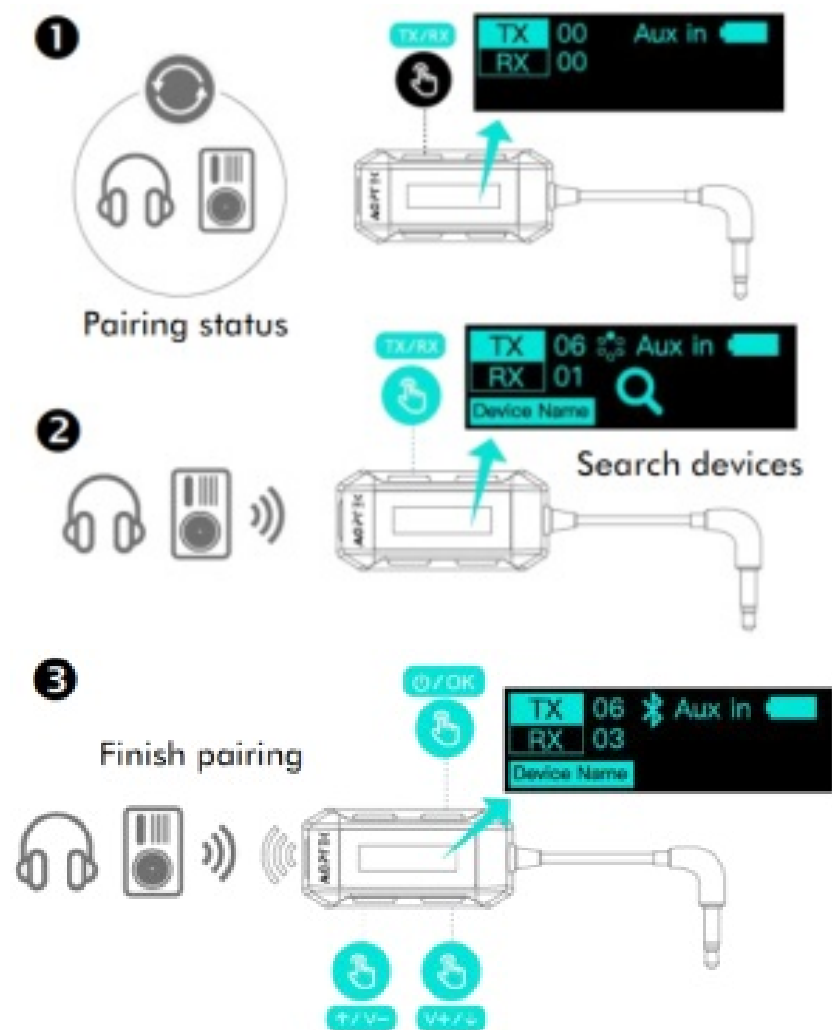
**Note:** When used as a transmitter, please adjust your Bluetooth headset or speaker to adjust the volume

## TX Mode Operation Guide

When this adapter is in transmit mode, it can be used with non-Bluetooth devices to transmit the sound to the Bluetooth devices like Bluetooth headset or Bluetooth speaker.



## How To Use



**Note:** There are two input modes: AUX and Type-C.

## Dual Pairing

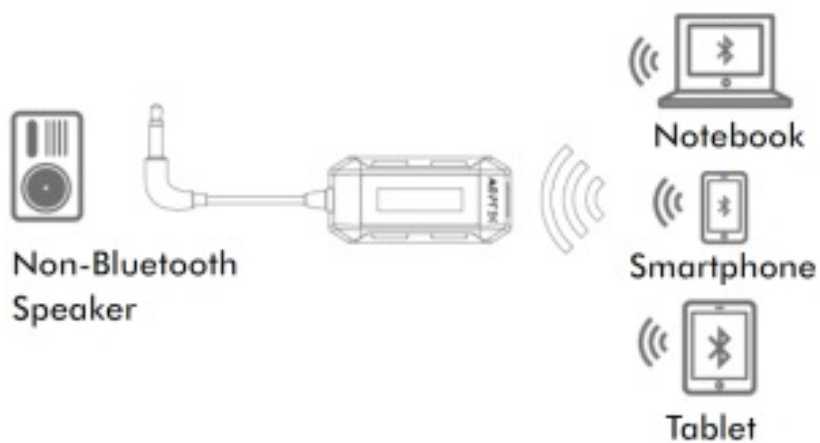


After completing the connection to the first Bluetooth device as the above method, connect to the second one in the same way.

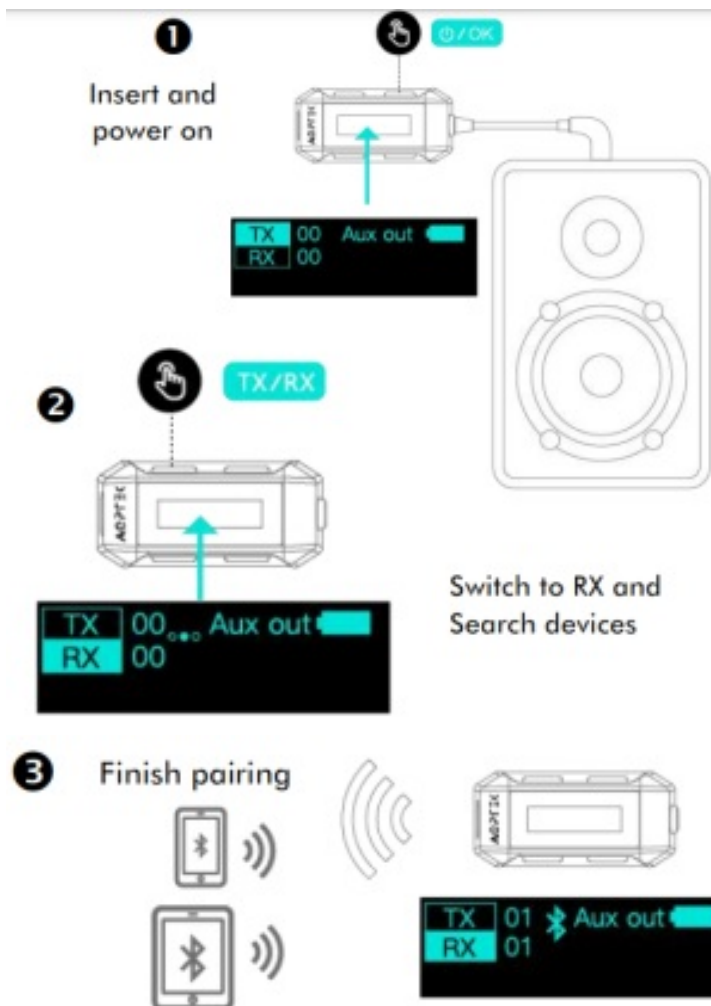
Then, two Bluetooth headsets or Bluetooth speakers can work simultaneously

## RX Mode Operation Guide

When this adapter is in receiving mode, it can transmit the music from mobile phones, tablets, notebooks, etc., to non Bluetooth speakers with AUX audio input through the Bluetooth receiving function of this adapter.

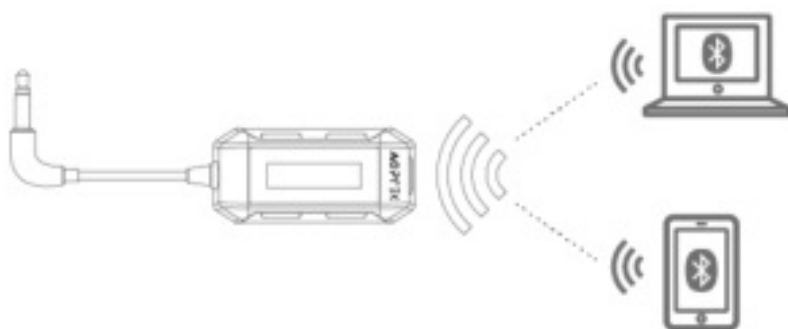


## How To Use



## Dual Pairing

The adapter can receive signals from two Bluetooth transmitting devices (mobile phones, tablets or notebooks) at the same time.



The connection steps are the same as above. Note: It just allow to support pairing with two transmitting audio devices at the same time, that is, listen to two devices alternately in receiving mode.

## Restore Factory Settings & Clear Bluetooth Pairing List

After shutting down, long press the power button and hold it on for about 10 seconds until the prompt of restoring factory settings appears.

## Charging

When the adapter is in low power or can't power on, you can charge it via the Type-C port.

## Trouble Shooting

When you encounter the following problems, you can try the following methods to solve:

### 1. The adapter is not working properly ?

1. Please connect this product to a power adapter to charge, and check whether the battery is out of electricity.
2. The device has been connected to the adapter but there is no sound. Please check whether the volume of the adapter is 0.
3. The mobile phone cannot search for or pair with the adapter. Please check whether the adapter is in the RX receiving mode. You can refer to the above RX mode operation guide.
4. The Bluetooth device (Bluetooth headset or speaker) cannot be searched when the adapter is in TX mode. Please check whether the adapter is in searching for the Bluetooth device status in TX mode. You can refer to the above TX mode operation guide.

### 2. What should I do if there is no sound when two audio devices are connected at the same time in TX mode ?

1. First, make sure that the two audio devices have been paired with the adapter.
2. It is necessary to confirm whether the volume of the audio device is automatically reduced to the lowest level or whether it automatically stops playing music. At this time, it is necessary to let the audio device to play music or increase the volume.

**Note:** When the Bluetooth headsets or speakers stop playing, it may appear that the music of the audio output device is still playing. After the playback is resumed, the music can continue to play.

3. You can connect the two devices again after restarting the Bluetooth adapter.

### 3. . Why can't I search for Bluetooth headsets or Bluetooth speakers in TX transmit mode ?

The device may not be compatible with the Bluetooth adapter. For example, Sony's WF-1000XM3 is unable to be searched.

## Specifications


Screen Size	0.91 OLED Screen
Resolution	128*32
Bluetooth Version	BT 5.0
Bluetooth Working Range	10 Meters (No Obstacles)
Battery Capacity	150 mAh
Charging Time	1 Hour
Charger Spec	500mAh-1A Output
OS Compatibility	Windows 7/8/10, Mac OS 10.10 and above, iOS 10.10 and above, Android 7.0 and above

If you have any problems about this product, please feel free to contact [support@agptek.com](mailto:support@agptek.com).

**Manufacturer:** Shenzhen RuiZu Digital Technology Co., Ltd.

**Address:** 6/F, Building D, KeShang Mei Park, Chongqing Road, Fuyong, Bao'an District, Shenzhen, China.

## Documents / Resources

	<p><a href="#">AGPTEK BA02 Visible Bluetooth Transmitter and Receiver</a> [pdf] User Manual BA02, Visible Bluetooth Transmitter and Receiver, Bluetooth Transmitter and Receiver, Transmitter and Receiver, Receiver, Transmitter</p>
---	---