

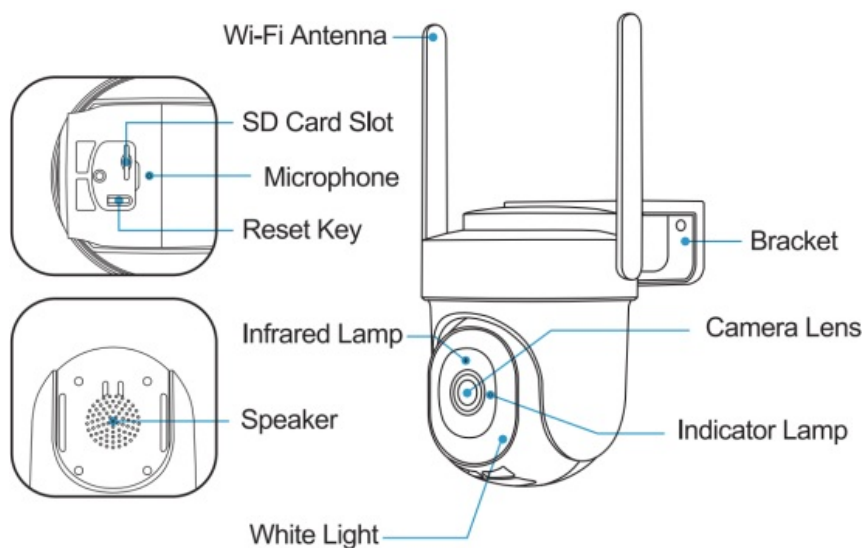
Agilicus 2AVKP-BF-BK04 PTZ Security Camera User Guide



Contents [[hide](#)]

- [1 Product Diagram](#)
- [2 Download and Install App](#)
- [3 Account Registration](#)
- [4 Add Camera to App](#)
- [5 Method 1: Bluetooth Setup\(RECOMMENDED\)](#)
- [6 Method 2: QR Code setup](#)
- [7 Documents / Resources](#)
 - [7.1 References](#)

Product Diagram



Reset Button	Keep pressing for 5 seconds o reset
Blink Slowly in Red	Awaiting Wi-Fi connection, ready add devices
Blink Fast in Red	Wi-Fi connecting
Sold in Red	Network problem
Sold in Blue	Wi-Fi connected, camera running normally.
Blink Slowly in Blue	Firmware update

Download and Install App

Download Cloud Edge App from Google Play™ or App Store™ Or scan the QR codes as below, with your smart phone.

NOTE: Google Play™ is a trademark of Google Inc. App Store™ is a service mark of Apple Inc.



NOTE: Please tum on both of the following permissions.

1. Allow Cloud Edge App to access mobile cellar data and wireless LAN, otherwise it will

fail to connect the camera.

2. Allow Cloud Edge App to receive pushed messages, otherwise, the phone will not receive alarms when motion is detected.

Account Registration

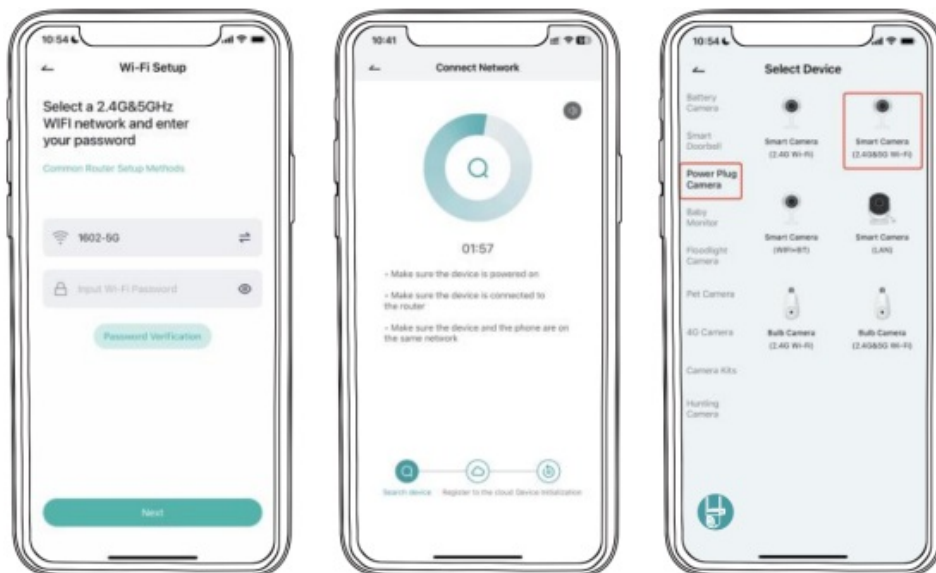
New user needs to sign up Cloud Edge App with email address. Click 'Sign up' to create a New Account and follow the steps to complete registration.

Add Camera to App

Preparations for connection

1. Insert a Micro SD Card into the camera to save video clips or you can start the 7-day free cloud service. Without Micro SD Card or cloud service, no video will be saved.
2. Please select 2.4G/5G WiFi to ensure good signal.
3. When connecting to the network, please take the camera close to the router
(Recommended within 10-15 ft).

Method 1: Bluetooth Setup(RECOMMENDED)



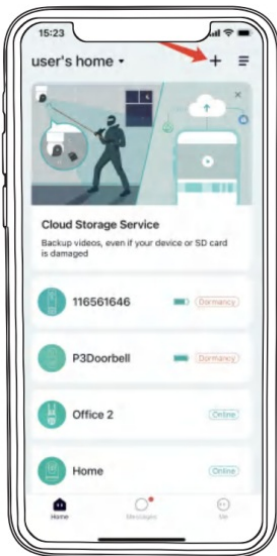
1. On the Homepage, tap "Add" or "+" in the upper right corner, tap "Add Device".
2. If the Bluetooth of cellphone doesn't turn on, the app will show a pop-up, please allow it to turn on Bluetooth.
3. After Bluetooth turns on, the app will automatically search for devices that are on and

not bound. Select the device you want to connect in the search list.

4. To connect the camera, select either the 2.4GHz or 5GHz Wi-Fi and enter the password. The app will automatically display the Wi-Fi you may be using when Bluetooth is turned on. Usually, the name and password for both Wi-Fi networks are the same or similar. If you cannot find the Wi-Fi network, please contact your router provider to check your router's Wi-Fi settings.
5. The app will automatically go to the page where the wifi connection is in progress. A sound will be heard. Wait for connection successful and camera indicator light changes to steady blue. Click "Next" to edit the camera name and choose a family. Click "Done" to finish the setup.
6. If failed to connect, check the reason and resolution shown on the app. Long press the reset button until hear a "cuckoo" sound to reset the camera and start again, or try the other methods below.

Method 2: QR Code setup

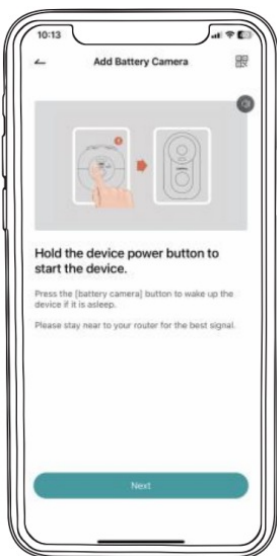
- Tap 'Add Device'



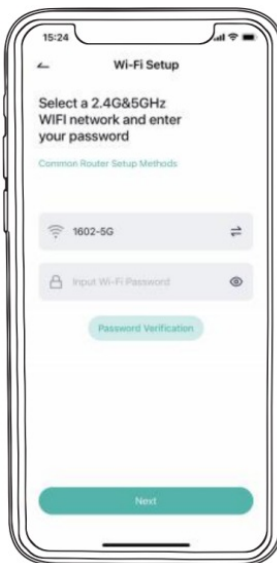
- Select Camera



- Turn on the Camera



- Input Wi-Fi Password



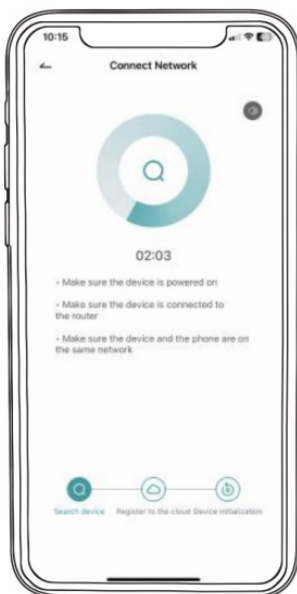
- Prepare the Scanning



- Scan QR Code



- Installation complete at 100%



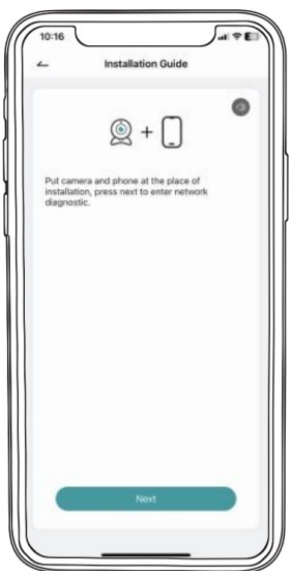
- Name the camera



- View Installation Tips



- Perform Network Diagnosis



- Using the camera



 svipcusomers@163.com

EC REP Prolinx GmbH

Brehmstr. 56, 40239 Duesseldorf
Germany

Email: eu@eulinx.eu

UK REP Prolinx Global LTD

27 Old Gloucester Street
London, WC1N 3AX, UK

Email: eu@eulinx.eu

Customers Support Email: svipcusomers@163.com

FCC ID: 2AVKP-BF-BK04



Documents / Resources



PTZ Security Camera
QUICK START GUIDE

[Agilicus 2AVKP-BF-BK04 PTZ Security Camera \[pdf\]](#) User Guide

2AVKP-BF-BK04 PTZ Security Camera, 2AVKP-BF-BK04, PTZ Security Camera, Security Camera, Camera

References

- [User Manual](#)

Agilicus

2AVKP-BF-BK04, 2AVKP-BF-BK04 PTZ Security Camera, Agilicus, camera, PTZ Security Camera, Security Camera

Leave a comment

Your email address will not be published. Required fields are marked *

Comment *

Name

Email

Website

☐ Save my name, email, and website in this browser for the next time I comment.

[Post Comment](#)

Search:

[Search](#)

[Manuals+](#) | [Upload](#) | [Deep Search](#) | [Privacy Policy](#) | [@manuals.plus](#) | [YouTube](#)

This website is an independent publication and is neither affiliated with nor endorsed by any of the trademark owners. The "Bluetooth®" word mark and logos are registered trademarks owned by Bluetooth SIG, Inc. The "Wi-Fi®" word mark and logos are registered trademarks owned by the Wi-Fi Alliance. Any use of these marks on this website does not imply any affiliation with or endorsement.