

Agilent Technologies 16085B Terminal Adapter



# Agilent Technologies 16085B Terminal Adapter User Guide

[Home](#) » [Agilent Technologies](#) » Agilent Technologies 16085B Terminal Adapter User Guide 

## Contents

- [1 Agilent Technologies 16085B Terminal Adapter](#)
- [2 Product Information](#)
- [3 Product Usage Instructions](#)
- [4 Safety Symbol](#)
- [5 Certification](#)
- [6 Warranty](#)
- [7 INTRODUCTION](#)
- [8 DESCRIPTION](#)
- [9 MAINTENANCE](#)
- [10 Part Description](#)
- [11 REGIONAL SALES AND SUPPORT OFFICES](#)
- [12 Documents / Resources](#)
  - [12.1 References](#)
- [13 Related Posts](#)



**Agilent Technologies 16085B Terminal Adapter**



## Product Information

### Specifications

- **Model:** [insert model name]
- **Dimensions:** [insert dimensions]
- **Weight:** [insert weight]
- **Power Source:** [insert power source]
- **Color:** [insert color]
- **Material:** [insert material]
- **Warranty:** [insert warranty information]

## Product Usage Instructions

### Setup

1. Unpack the product and ensure all components are included.
2. Select a suitable location for the product.
3. Connect the power cord to the power source.
4. Turn on the product using the power switch/button.

### Basic Operation

1. Ensure the product is powered on.
2. Adjust any necessary settings using the control panel or remote control.
3. Load the desired content (e.g., insert a DVD, connect a USB drive, etc.).
4. Select the appropriate input source on the product or remote control.
5. Control playback using the provided buttons or remote control.

### Maintenance

- Clean the exterior regularly with a soft, dry cloth.
- Avoid exposing the product to extreme temperatures or humidity.
- Keep the product away from direct sunlight and sources of heat.

- Do not block any ventilation openings on the product.
- Refer to the user manual for any specific maintenance instructions.

**Troubleshooting** If you encounter any issues with the product, try the following:

1. Check that all cables are securely connected.
2. Ensure the power source is working and the product is receiving power.
3. Restart the product and try again.
4. Refer to the troubleshooting section in the user manual for further assistance.

## **Frequently Asked Questions (FAQ)**

### **Q: How do I change the language settings?**

- **A:** To change the language settings, navigate to the “Settings” menu using the remote control.
  - Select “Language” and choose your desired language from the available options.

### **Q: Can I connect external speakers to enhance the audio?**

- **A:** Yes, you can connect external speakers to the product.
  - Locate the audio output ports on the back of the product and connect the speakers using compatible cables.
  - Adjust the audio settings accordingly.

### **Q: How do I update the firmware of the product?**

- **A:** To update the firmware, visit our official website at [insert website] and download the latest firmware version for your specific model.
  - Follow the instructions provided in the firmware update guide to install the update.

### **Q: Is the product compatible with 4K resolution?**

- **A:** Yes, the product supports 4K resolution.
  - Ensure you have a compatible display device and a 4K source to utilize the product’s capabilities fully.

## **Notices**

- The information contained in this document is subject to change without notice.
- This document contains proprietary information that is protected by copyright. All rights are reserved.
- No part of this document may be photocopied, reproduced, or translated to another language without the prior written consent of Agilent Technologies.
- Agilent Technologies Japan, Ltd.
- Component Test PGU-Kobe
- 1-3-2, Murotani, Nishi-Ku, Kobe-shi, Hyogo, 651-2241 Japan
- Copyright © Agilent Technologies Japan, Ltd. 1990, 2000

## Manual Printing History

- The manual's printing date and part number indicate its current edition.
- The printing date changes when a new edition is printed. (Minor corrections and updates that are incorporated at reprint do not cause the date to change.)
- The manual part number changes when extensive technical changes are incorporated.
- **March** 1990 First Edition (part number: 16085-90001)
- **March** 2000 Second Edition (part number: 16085-90001)

## Safety Summary

- The following general safety precautions must be observed during all phases of operation, service, and repair of this instrument.
- Failure to comply with these precautions or with specific.
- **WARNINGS** elsewhere in this manual may impair the protection provided by the equipment.
- In addition, it violates safety standards of design, manufacture, and intended use of the instrument.
- Agilent Technologies assumes no liability for the customer's failure to comply with these requirements.






## Ground The Instrument




- To avoid electric shock hazards, the instrument chassis and cabinet must be connected to a safety earth ground by the supplied power cable with an earth blade.
- DO NOT Operate In An Explosive Atmosphere
- Do not operate the instrument in the presence of flammable gasses or fumes.
- Operation of any electrical instrument in such an environment constitutes a definite safety hazard.
- DO NOT Substitute Parts Or Modify Instrument Because of the danger of introducing additional hazards, do not install substitute parts or perform unauthorized modifications to the instrument. Return the instrument to a
- Agilent Technologies Sales and Service Office for service and repair to maintain safety features.

## Dangerous Procedure Warnings

- Warnings, such as the example below, precede potentially dangerous procedures throughout this manual. Instructions contained in the warnings must be followed.

## Safety Symbol

- General definitions of safety symbols used on the instrument or in manuals are listed below.
-  Instruction Manual symbol: the product is marked with this symbol when the user must refer to the instrument manual.
-  Alternating current.
-  Direct current.
-  On (Supply).
-  Off (Supply).

-  In the position of a push-button switch.
-  Out position of the push-button switch.
-  Frame (or chassis) terminal. A connection to the frame (chassis) of the equipment which normally includes all exposed metal structures.
- **WARNING** This warning sign denotes a hazard. It calls attention to a procedure, practice, condition, or the like, which, if not correctly performed or adhered to, could result in injury or death to personnel.
- **CAUTION** This Caution sign denotes a hazard. It calls attention to a procedure, practice, condition, or the like, which, if not correctly performed or adhered to, could result in damage to or destruction of part or all of the product.
- **NOTE** Note denotes important information. It calls attention to a procedure, practice, condition, or the like, which is essential to highlight.

## Certification

- Agilent Technologies certifies that this product met its published specifications at the time of shipment from the factory.
- Agilent Technologies further certifies that its calibration measurements are traceable to the United States National Institute of Standards and
- Technology, to the extent allowed by the Institution's calibration facility, or to the calibration facilities of other International Standards Organization members.

## Warranty

- This Agilent Technologies instrument product is warranted against defects in material and workmanship for a period corresponding to the individual warranty periods of its component products. Instruments are warranted for one year.
- Fixtures and adapters are warranted for 90 days. During the warranty period, Agilent Technologies will, at its option, either repair or replace products that prove to be defective.
- For warranty service or repair, this product must be returned to a service facility designated by Agilent Technologies.
- Buyer shall prepay shipping charges to Agilent Technologies and Agilent Technologies shall pay shipping charges to return the product to Buyer.
- However, the Buyer shall pay all shipping charges, duties, and taxes for products returned to Agilent Technologies from another country.
- Agilent Technologies warrants that its software and firmware designated by Agilent
- Technologies for use with an instrument will execute its programming instructions when the property is installed on that instrument.
- Agilent Technologies does not warrant that the operation of the instrument, or software, or firmware will be uninterrupted or error-free.

## Limitation of Warranty

- The foregoing warranty shall not apply to defects resulting from improper or inadequate maintenance by Buyer, Buyer-supplied software or interfacing, unauthorized modification or misuse, operation outside the environmental specifications for the product, or improper site preparation or maintenance.
- **IMPORTANT** No other warranty is expressed or implied. Agilent Technologies specifically disclaims the implied warranties of merchantability and fitness for a particular purpose.

## Exclusive Remedies

- The remedies provided herein are the buyer's sole and exclusive remedies. Agilent Technologies shall not be liable for any direct, indirect, special, incidental, or consequential damages, whether based on contract, tort, or any other legal theory.

## Assistance

- Product maintenance agreements and other customer assistance agreements are available for Agilent Technologies products.
- For any assistance, contact your nearest Agilent Technologies Sales and Service Office.
- Addresses are provided at the back of this manual.

## INTRODUCTION

- This operation note provides the information necessary to use and service the HP 16085 B Terminal Adapter.
- The specifications for the 16085B are listed in Ta- connector.

## DESCRIPTION

- The 16085B Terminal Adapter converts the 4-terminal pair configuration of HP's impedance measurement instruments to an APC-7 coaxial connector for connection of the 16092A, 16093A, and 16093B test fixtures.
- These test fixtures are specially designed for measuring discrete components with radial and axial loads, and chip components.
- Table 2 shows a simplified diagram of the interconnection between APC-7 and
- BNC connectors and lists the typical values of the 16085B's residual components.

### Table 1. Specifications

- **Terminals:** APC-7 coaxial connector, 2-terminal configuration. The BNC connectors are compatible with the 4-terminal-pair measurement terminals of HP's impedance measurement instruments.
- **Frequency Range:** dc to 40MHz
- **DC Bias Voltage:**  $\pm 40$ V max.
- **Dimensions in mm (inches):** 178 (7.0) W x 90 (3.5) H x 114 (4.5) D
- **Weight in grams (lbs.):** approximately 550 (1.2)

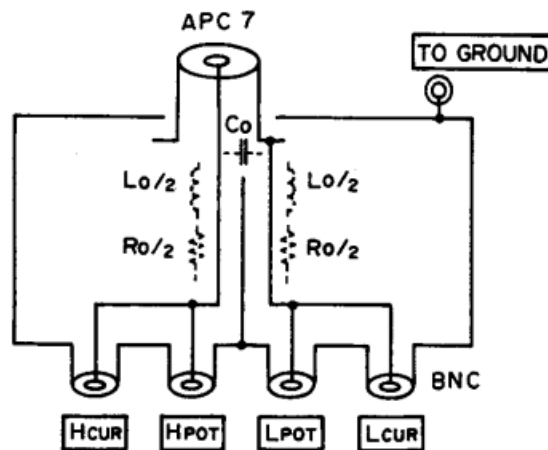
## OPERATION NOTE

**Table 2.** 16085B Circuit Configuration and Residual Components

- **Residual Inductance,  $L_o$ :** 32 nH  $\pm$  5 nH
- **Stray Capacitance,  $C_o$ :** 1.7 pF  $\pm$  0.3 pF
- **Residual Resistance,  $R_o$ :** Less than  $0.04(1 + T)$  s
- (If is the test frequency in MHz. The frequency range is due to 40MHz.)

#### Note

1. Residual elements,  $L_o$ ,  $C_o$ , and  $R_o$  are shown in the figure below.
2. The connector's fringe capacitance is included with  $C_o$ , the stray capacitance. The Residual elements can be compensated for by making ZERO- OPEN/SHORT measurements.
3. The uncertainty of the residual impedances are,  $L < 1$  nH,  $C < 0.1$  pF  $R < 5$ m%



#### MAINTENANCE

- Figure 1 shows an exploded view of the 16085B Terminal Adapter and a list of replaceable parts. Do not disassemble the unit any further than shown in Figure 1.
- Maintenance consists principally of cleaning the contacts and replacing worn or damaged parts. To order replacement parts, use the HP part numbers listed in Figure 1.
- If a faulty part is located within an assembly that cannot be disassembled, order the next higher assembly or return the whole unit to your nearest HP Sales/Service Office for repair or replacement.
- The cleaning and replacement instructions for the APC-7 connector contact are as follows.

##### 1. Cleaning the APC-7 Connector Contact

1. The APC-7 connector contact surface must be kept clean. HP recommends periodic cleaning using a lint-free cloth, and if a cleaning fluid is needed, use ISOPROPYL ALCOHOL only.

##### 2. Replacement of the APC-7 Connector Contact

- To maintain optimum contact between the APC-connector contact and the test fixture, replace the Reconnector contact (PN 1250-0816) every 1000 connections/disconnections or as required by wear or damage).
- An exploded view of the RE connector contact and its replacement procedure are shown in Figure 2.

**The following procedure should be used to replace the RF connector contact:**

1. Rotate the APC-7 connector (PN 1250-1466) counterclockwise until the marked portion appears.
2. Use a 12mm wrench and turn the connector counterclockwise to remove it.
3. The RF connector contact (PN 1250-0816) is now exposed as shown in Figure 2.
4. The RF connector contact can be removed by turning it counterclockwise using a pair of needle-nose pliers with protective rubber pads on the tips.

## Part Description

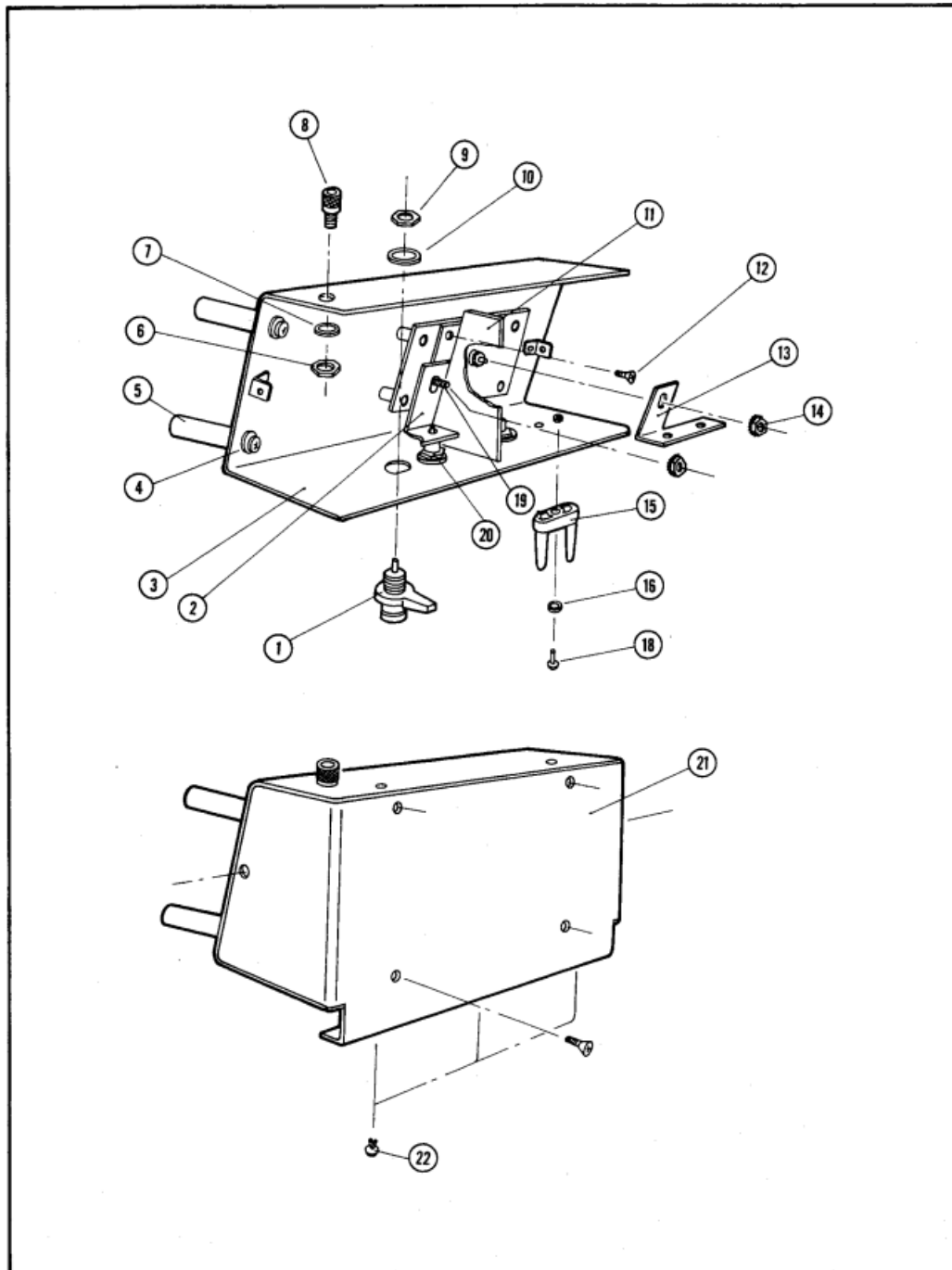


Figure 1. Parts Identification for 16085A (Sheet 1 of 2).



Item No.	Part No.	Qty.	Description
1	16012-7122	2	BNC ASSY.
2	16085-01212	1	ANGLE(B)
3	16085-04011	1	TOP COVER
4	04192-40001	4	INSULATOR
5	16085-26011	2	POST
6	2950-0006	1	NUT
7	2190-0084	1	WASHER
8	1510-0130	1	GND POST
9	2950-0043	4	NUT
10	2190-0016	4	WASHER
11	16085-00612	1	SHIELD PLATE
12	0515-0914	17	SCREW
13	16085-01211	1	ANGLE (A)
14	0535-0031	2	NUT
15	16047-40000	1	STOPPER
16	2190-0206	1	WASHER
17			not assigned
18	0515-1551	1	SCREW
19	16085-24001	1	STUD (A)
20	1250-1798	2	BNC CONNECTOR
21	16085-04012	1	BOTTOM COVER
22	6960-0016	3	PLUG-HOLE
23	1250-1466	1	APC-7
24	1250-0816	1	RF CONNECTOR
25	5040-0306	1	INSULATOR
26	0515-1005	6	SCREW
27	16085-25011	1	INSULATOR
28	16085-21011	1	FLANGE
29	16085-25012	1	BUSH
30	16085-21012	1	BUSH
31	16085-23001	1	CENTER CONDUCTOR
32	5040-0306	1	INSULATOR
33	16085-00611	1	PLATE
34	16085-24002	1	STUD (B)

Figure 1. Parts Identification for 16085A (Sheet 2 of 2).

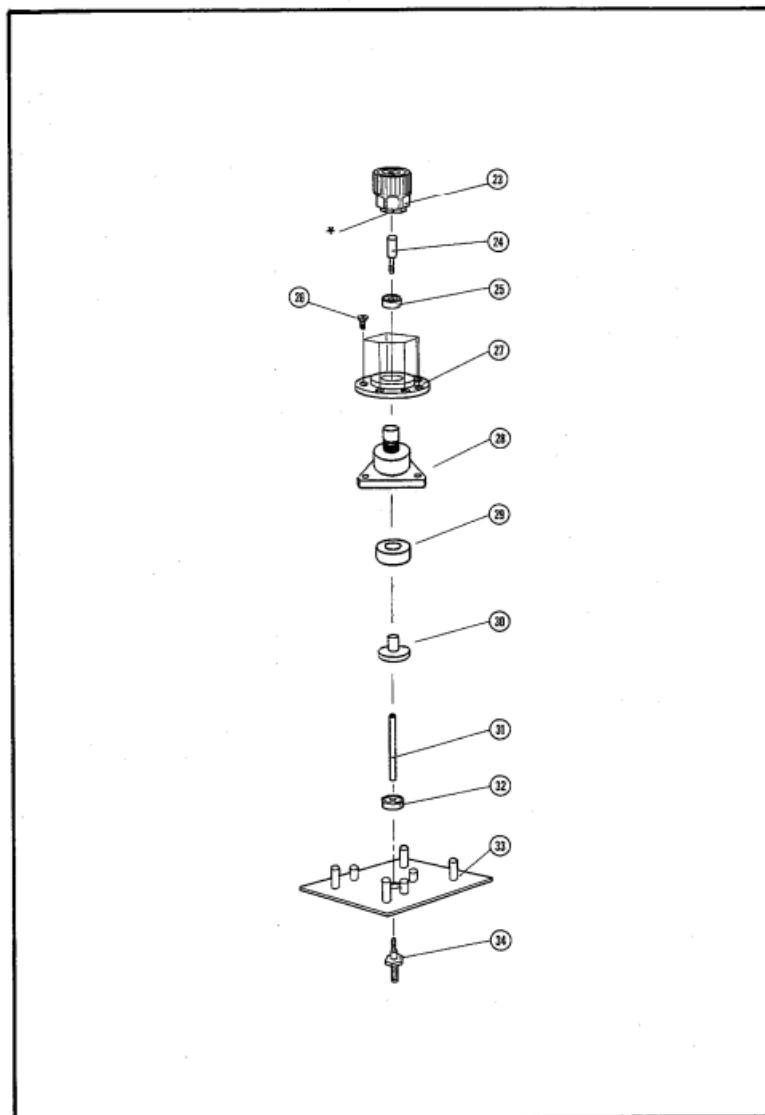


Figure 2. Exploded View of APC-7 RF Connector Assembly

## REGIONAL SALES AND SUPPORT OFFICES

For more information about Agilent Technologies test and measurement products, applications, and services, and a current sales office listing, visit our website: <http://www.agilent.com/find/tmdir>.

You can also contact one of the following centers and ask for a test and measurement sales representative 11/29/99

### United States:

- Agilent Technologies
- Test and Measurement Call Center
- P.O.Box 4026
- Englewood, CO 80155-4026
- (tel) 1 800 452 4844

### Canada:

- Agilent Technologies Canada Inc.
- 5150 Spectrum Way

- Mississauga, Ontario
- LAW SG1
- (tel) 1 877 894 4414

**Europe:**

- Agilent Technologies
- Test & Measurement
- European Marketing Organization
- P.O.Box 999
- 1180 AZ. Amstelveen
- The Netherlands
- (tel) (31 20) 547 9999

**Japan:**

- Agilent Technologies Japan Ltd.
- Call Center
- 9-1, Takakura-Cho, Hachioji-Shi,
- Tokyo 192-8510, Japan
- (tel) (81) 426 56 7832
- (fax) (81) 426 56 7840

**Latin America:**

- Agilent Technologies
- Latin American Region Headquarters 5200 Blue Lagoon Drive, Suite #950 Miami, Florida 33126 U.S.A.
- (tel) (305) 267 4245
- (fax) (305) 267 4286

**Australia/New Zealand:**

- Agilent Technologies Australia Pty Ltd

**347 Burwood Highway**

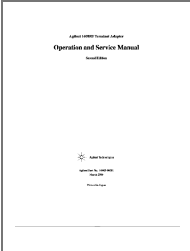
- Forest Hill, Victoria 3131
- (tel) 1-800 629 485 (Australia)
- (fax) (61 3) 9272 0749
- (tel) 0 800 738 378 (New Zealand)
- (fax) (64 4) 802 6881

**Asia Pacific:**

- Agilent Technologies
- 24/F, Cityplaza One, 1111 King's Road,
- Taikoo Shing, Hong Kong
- (tel) (852)-3197-7777
- (fax) (852)-2506-9284



Documents / Resources

	<a href="#">Agilent Technologies 16085B Terminal Adapter</a> [pdf] User Guide 16085B Terminal Adapter, 16085B, Terminal Adapter, Adapter
---	---

References

-  [Manual-Hub.com - Free PDF manuals!](#)
- [User Manual](#)

Manuals+, Privacy Policy

This website is an independent publication and is neither affiliated with nor endorsed by any of the trademark owners. The "Bluetooth®" word mark and logos are registered trademarks owned by Bluetooth SIG, Inc. The "Wi-Fi®" word mark and logos are registered trademarks owned by the Wi-Fi Alliance. Any use of these marks on this website does not imply any affiliation with or endorsement.