



# AGILE Limo ROS Delivering Professional Unmanned Ground Robots User Guide

[Home](#) » [AGILE](#) » AGILE Limo ROS Delivering Professional Unmanned Ground Robots User Guide 

## Contents

- 1 AGILE Limo ROS Delivering Professional Unmanned Ground Robots
- 2 Operation
- 3 Drive mode switching
- 4 Rubber tire installation
- 5 Documents / Resources
  - 5.1 References

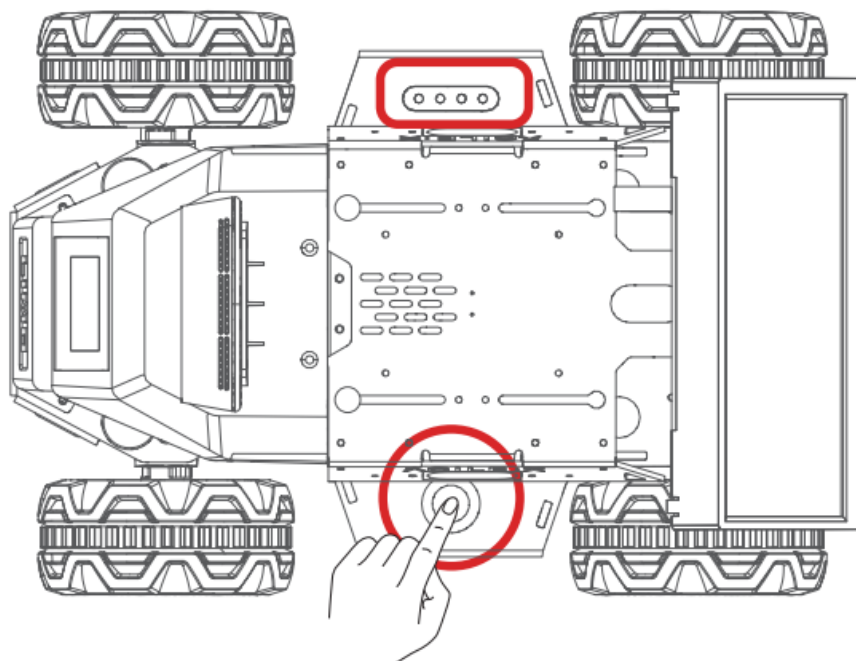


**AGILE Limo ROS Delivering Professional Unmanned Ground Robots**



## Operation

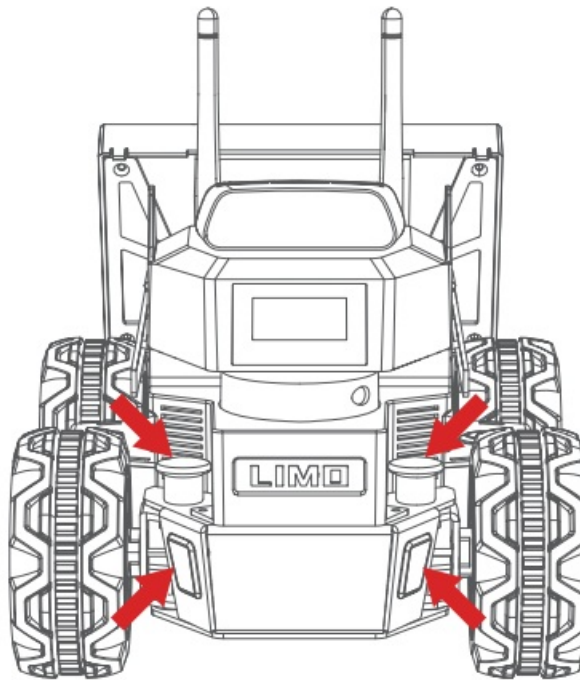
1. Long press the button to turn on or turn off the LIMO. (Short press the button to stop the LIMO while using).



## Description of battery indicator

Light Status	Meaning
● ● ● ● Solid Green /flashing	Sufficient battery
○ ○ ○ ● Red light flashing	Low battery

2. Check current drive mode of LIMO by observing the status of the front latch and the indicators.



Description of latch status and front indicator color

Latch status	Indicator color	Current mode
	Blinking red	Low battery/main controller alarm
	Solid red	LIMO stops
Inserted	Yellow	Four-wheel differential/tracked mode
	Blue	Mecanum wheel mode
Released	Green	Ackermann mode

### 3. APP Instructions

1. Scan the QR code below to download the App, 10S APP can be downloaded from the AppStore by searching for AgileX.

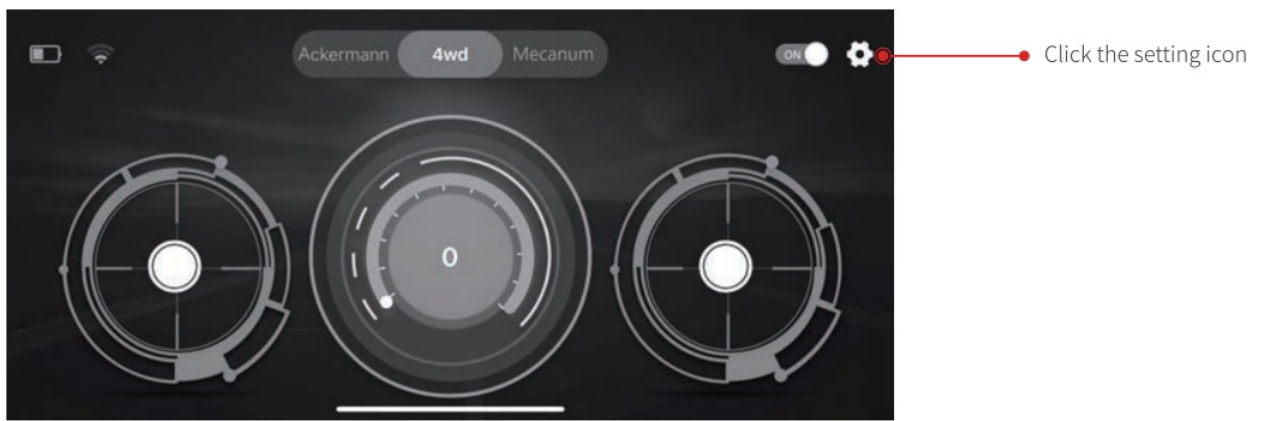


IOS

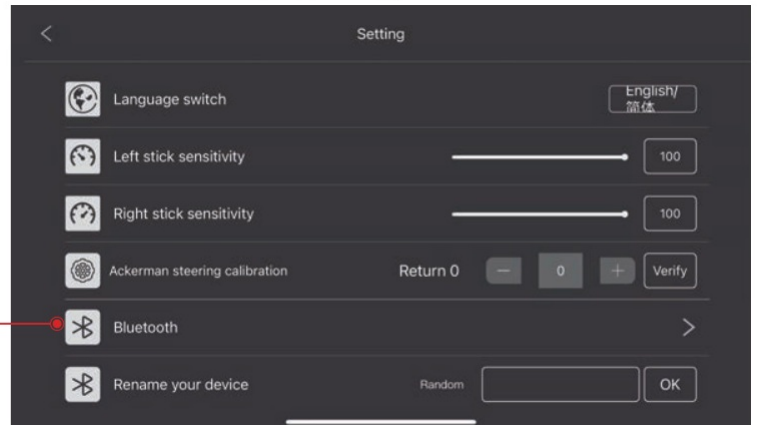


Android

2. Open APP and connect to Bluetooth



Click on the Bluetooth icon to search for LIMO\_XXXXXX



### 3. Instructions on remote control interface

Turn on/off the controller

Drive mode switch

Status

Bluetooth signal

Speed

Motion control

Direction control



### 4. Settings

Switch language

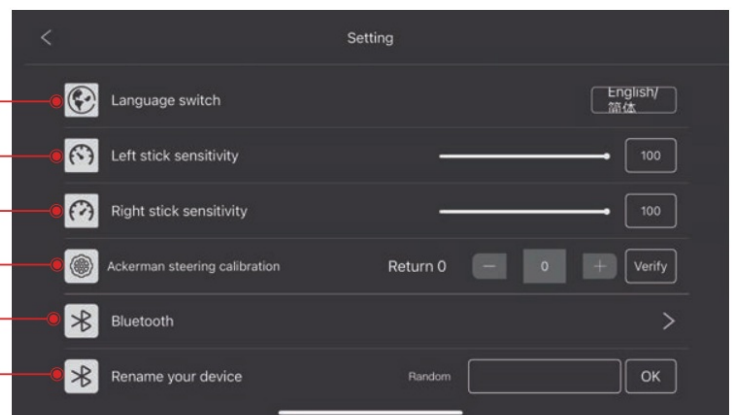
Adjust the control sensitivity of the left stick

Adjust the control sensitivity of the right stick

LIMO steering servo calibration in Ackerman mode

Instructions on the settings interface

Change the name of LIMO Bluetooth (Note: After clicking OK, the Bluetooth connection will be disconnected, and LIMO needs to be restarted to be connected again)



### 5. Instructions on mode switching through APP

1. **Ackermann:** manually switch to the Ackermann mode through the latches on the LIMO, the APP will automatically recognize the mode and the latches are released.
2. **Four-wheel differential:** manually switch to the Four-wheel differential mode through the latches on


the LIMO, the APP will automatically recognize the mode and the latches are inserted.

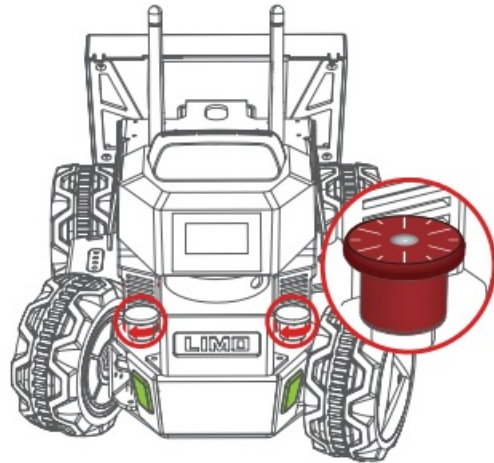
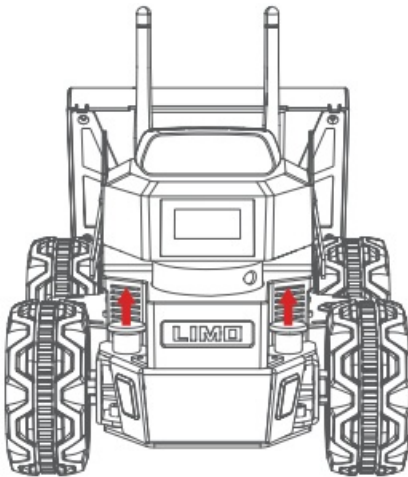
3. Mecanum: switch to the Mecanum mode through APP at the requisite of latches inserted and the Mecanum tiers are installed.

## Drive mode switching

1. Switch to Ackermann mode(green light):


Release the latches on both sides, and turn 30 degrees clockwise to make the longer line on the two latches

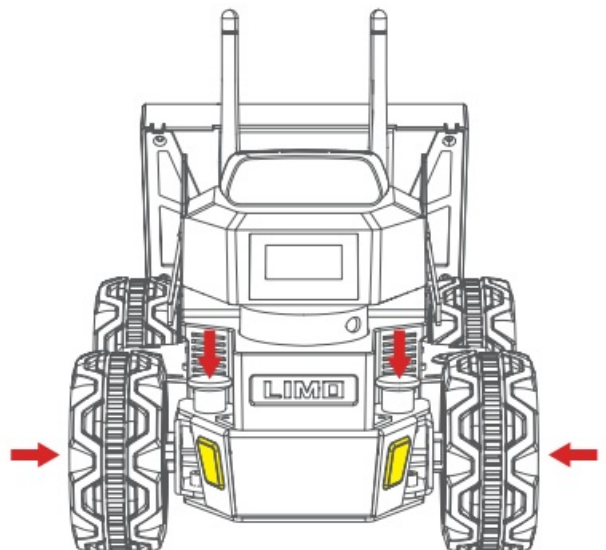
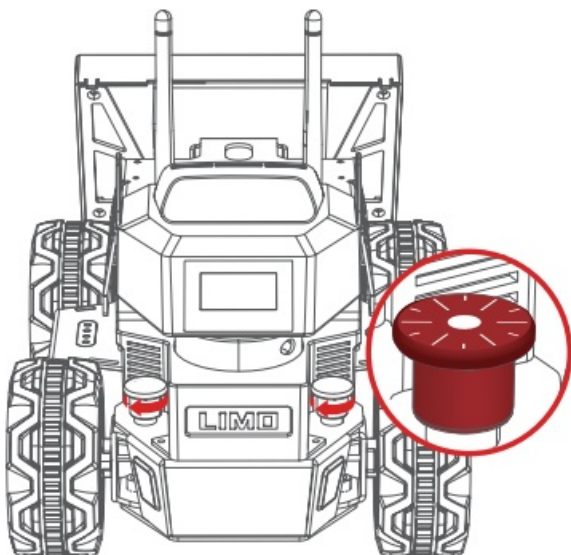
points to the front of the LIMO  . When the LIMO indicator light turns green, the switch is successful;



2. Switch to four-wheel differential mode(yellow light):

Release the latches on both sides, and turn 30 degrees clockwise to make the shorter line on the two latches

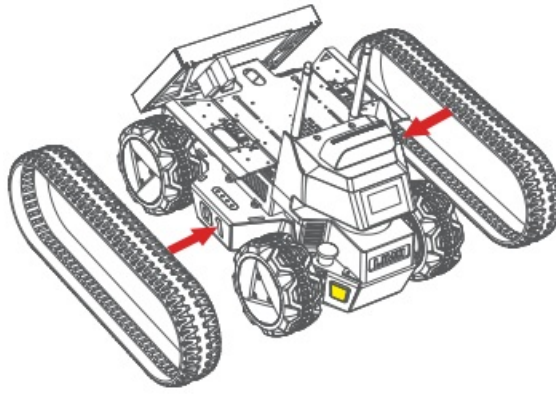
points to the front of the vehicle body  . Fine-tune the tire angle to align the hole so that the latch is inserted. When the LIMO indicator light turns yellow, the switch is successful.



3. Switch to track mode(yellow light):

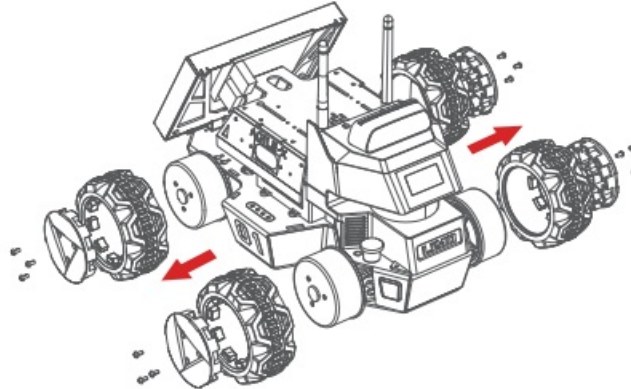
In the four-wheel differential mode, just put the tracks on to switch to the tracked mode. It is recommended to put the tracks on the smaller rear wheel first. In the tracked mode, please lift the doors on both sides to prevent scratches;



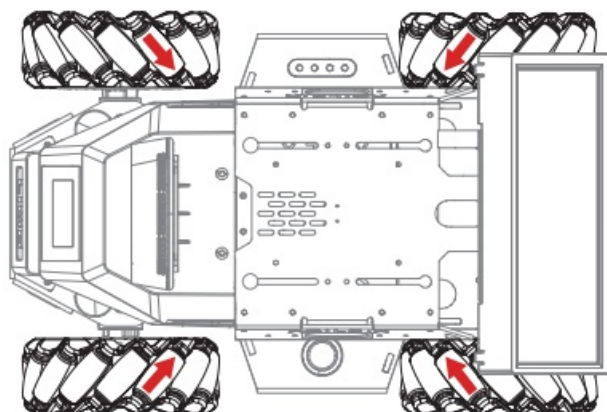
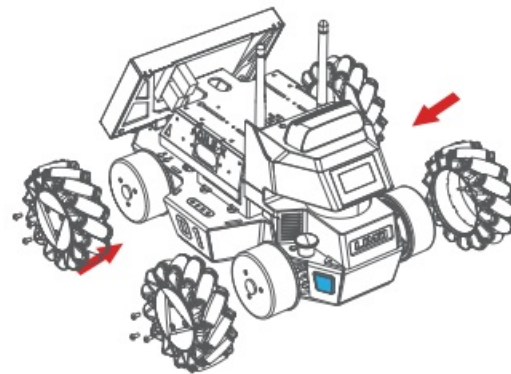


#### 4. Switch to Mecanum mode(blue light):

1. When the latches are inserted, first remove the hubcaps and tires, leaving only the hub motors;



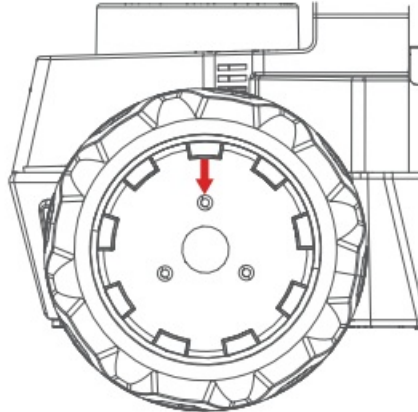
2. Install the Mecanum wheels with the M3\*5 screws in the package. Switch to the Mecanum mode through APP, when the LIMO indicator light turns blue, the switch is successful.



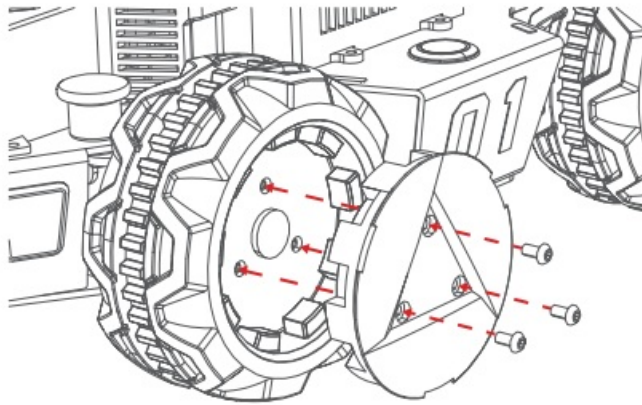
**Note:** Make sure that each Mecanum wheel is installed at the right angle as shown above.

## Rubber tire installation

1. Align the screw holes in the middle of the rubber tire mounting gear, and wear the tire on;



2. Align the holes to install the hubcap, and tighten the M3\*12mm screws.



**Company Name:** Songling Robot (Shenzhen) Co., Ltd

**Address:** Room1201,Levl12,Tinno Building, No.33

Xiandong Road, Nanshan District, Shenzhen, Guangdong Province, China.

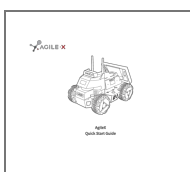
[sales@agilex.ai](mailto:sales@agilex.ai)

[support@agilex.ai](mailto:support@agilex.ai)

86-19925374409

[www.agilex.ai](http://www.agilex.ai)

## Documents / Resources



[AGILE Limo ROS Delivering Professional Unmanned Ground Robots](#) [pdf] User Guide  
Limo ROS Delivering Professional Unmanned Ground Robots, Limo, ROS Delivering  
Professional Unmanned Ground Robots, Delivering Professional Unmanned Ground Robots, Pr  
ofessional Unmanned Ground Robots, Unmanned Ground Robots, Ground Robots

## References

- [User Manual](#)

[Manuals+](#), [Privacy Policy](#)

This website is an independent publication and is neither affiliated with nor endorsed by any of the trademark owners. The "Bluetooth®" word mark and logos are registered trademarks owned by Bluetooth SIG, Inc. The "Wi-Fi®" word mark and logos are registered trademarks owned by the Wi-Fi Alliance. Any use of these marks on this website does not imply any affiliation with or endorsement.