



AGC MLT-EXAG-K Hexagon Bt Controller User Manual

[Home](#) » [AGC](#) » AGC MLT-EXAG-K Hexagon Bt Controller User Manual 

Contents

- [1 AGC MLT-EXAG-K Hexagon Bt Controller](#)
- [2 Product Information](#)
- [3 Internal Photos](#)
- [4 Product Usage Instructions](#)
- [5 Documents / Resources](#)
- [6 Related Posts](#)



AGC MLT-EXAG-K Hexagon Bt Controller

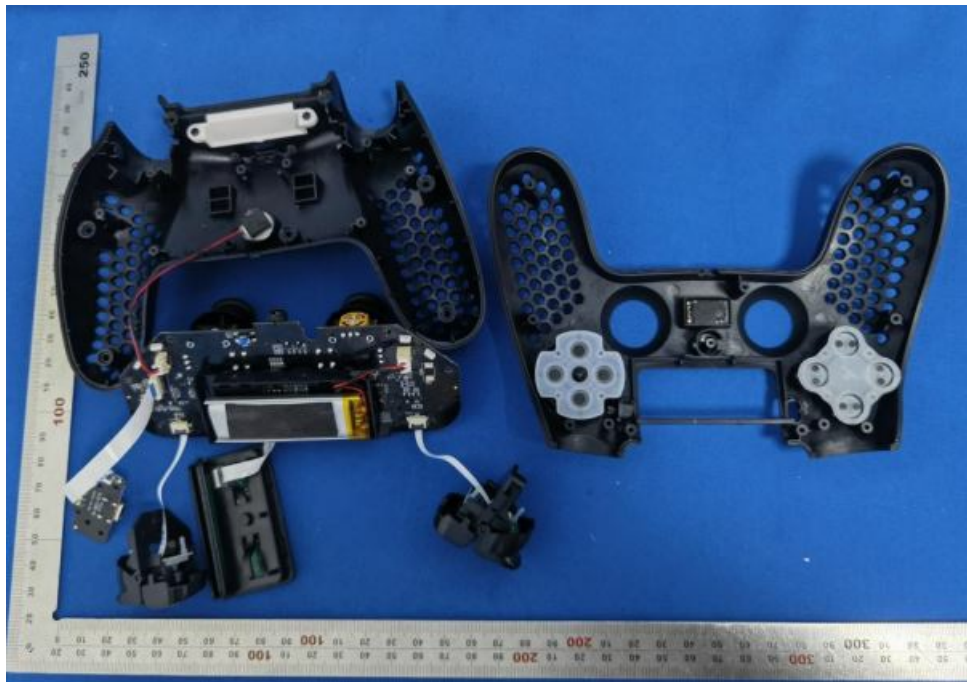


Product Information

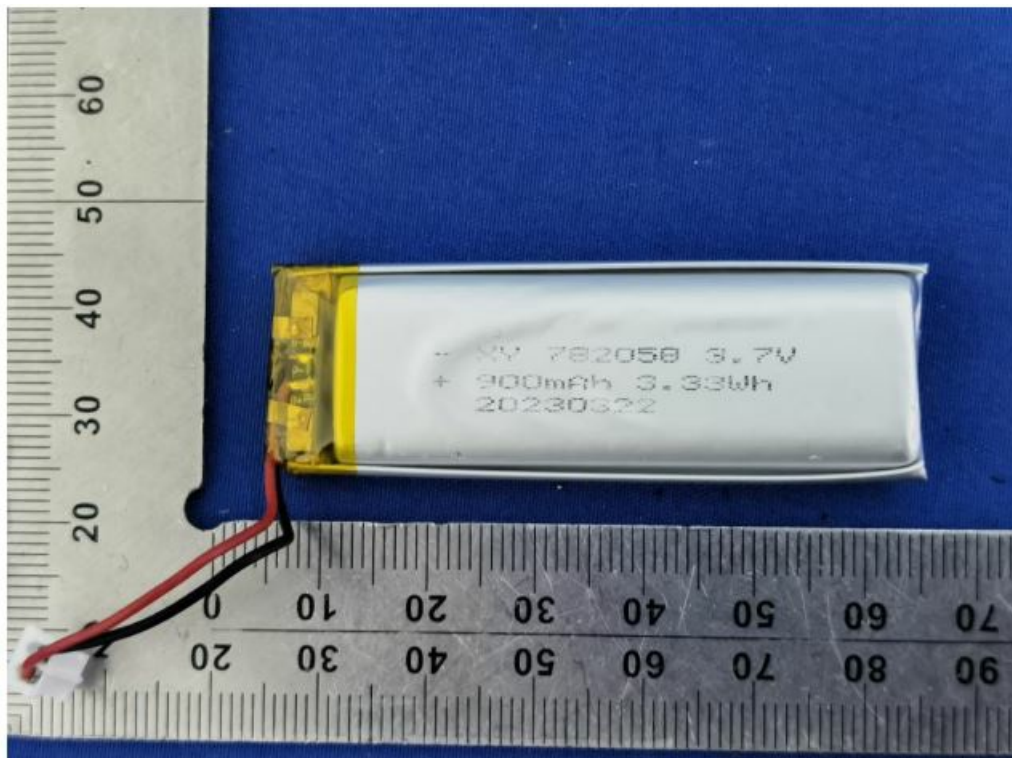
- Product: EUT (Equipment Under Test)
- Report No.: AGC08184230301AP03

Internal Photos

- Open view of EUT (Figure 1)



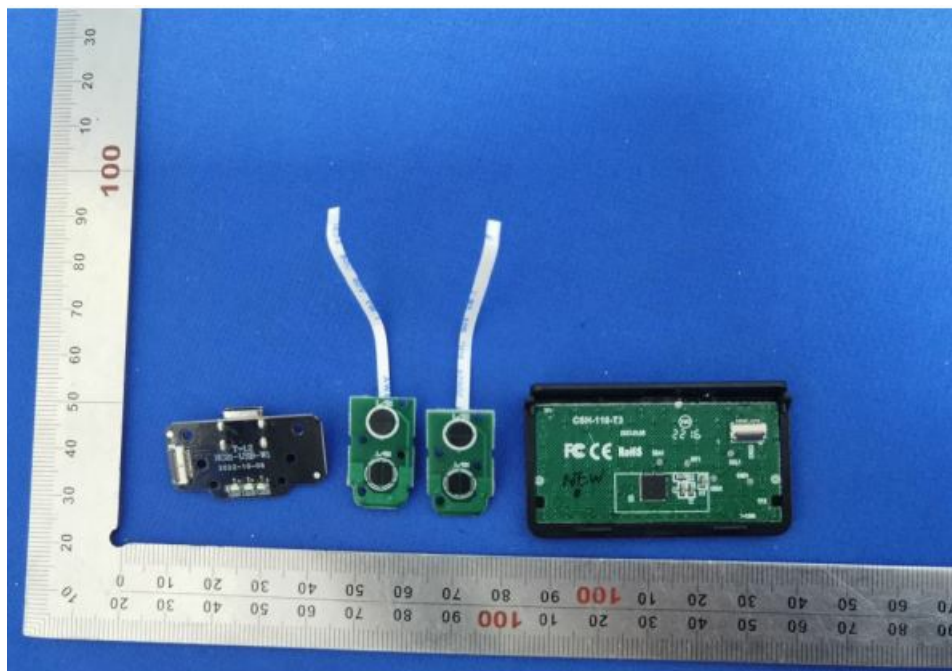
- Battery view of EUT (Figure 1)



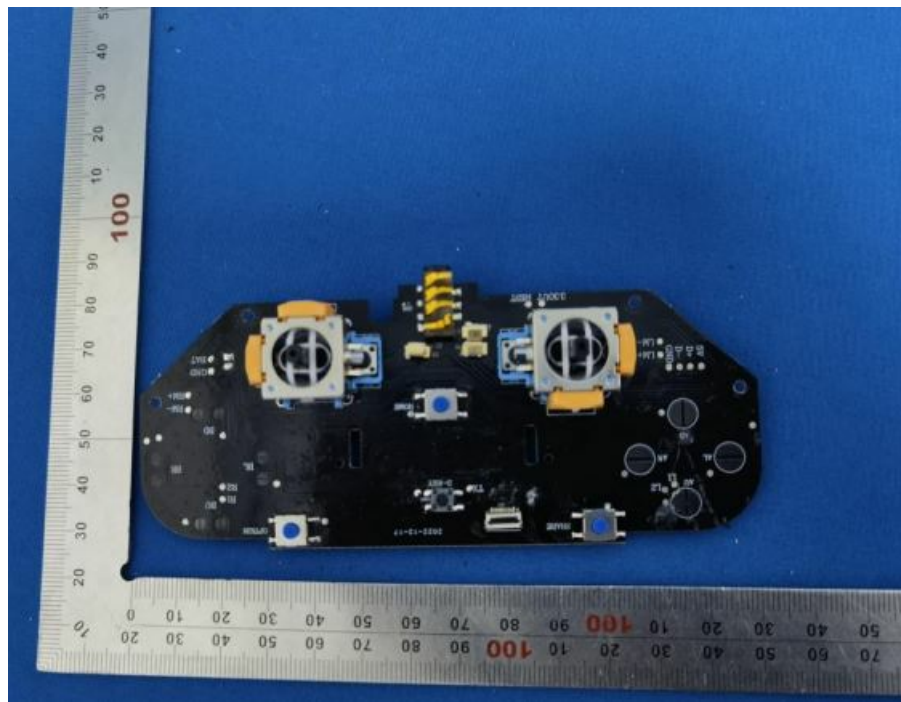
- Antenna close-up photo-1 BT Antenna



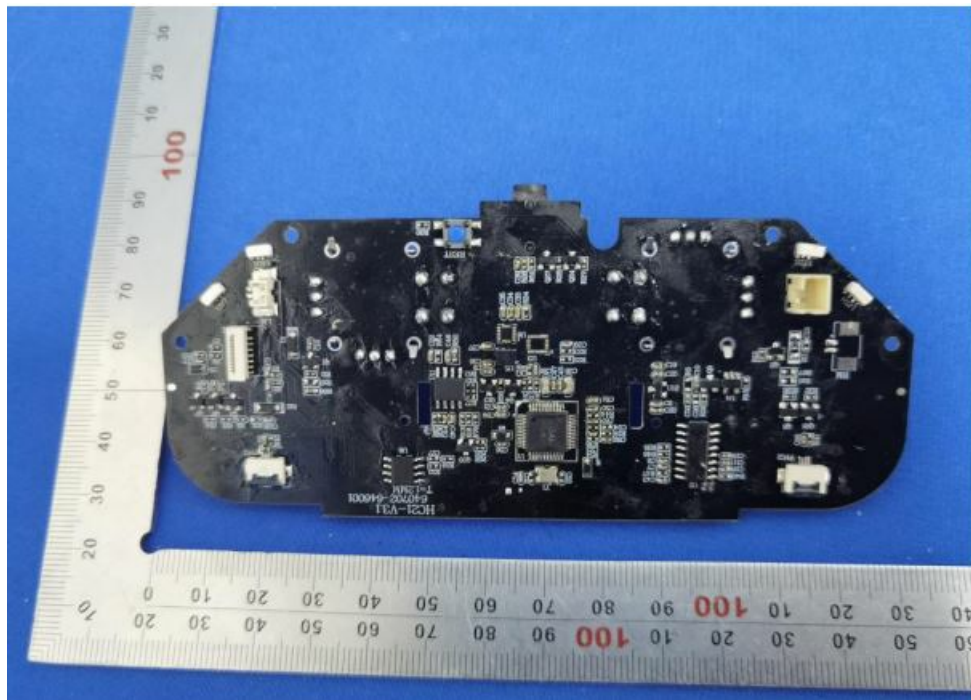
- Internal view of EUT (Figure 1)



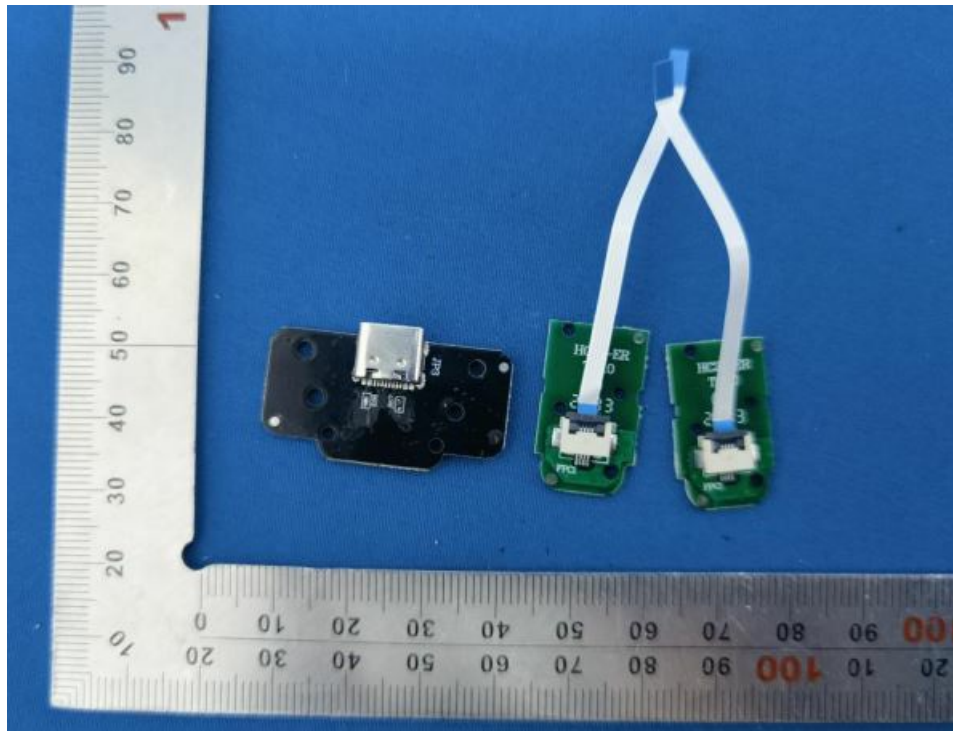
- Internal view of EUT (Figure 2)



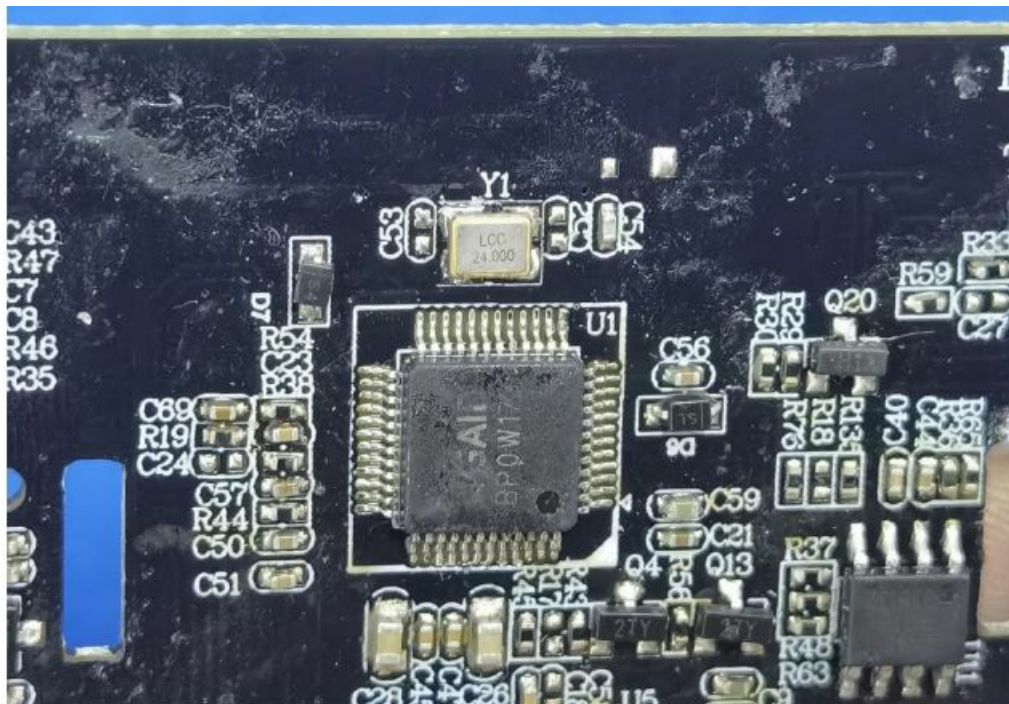
- Internal view of EUT (Figure 3)



- Internal view of EUT (Figure 4)



- Internal view of EUT (Figure 5)



Note: This report provides internal photos and views of the Equipment Under Test (EUT).

Product Usage Instructions

1. Ensure the EUT is powered off before opening.
2. To open the EUT, refer to the open view photo in Figure 1 for guidance.
3. If necessary, replace the battery by following the battery view photo in Figure 1.
4. For a close-up view of the BT Antenna, refer to the photo-1 in Figure 2.
5. To gain an internal view of the EUT, refer to the photos in Figures 1, 2, 3, 4, and 5.
6. Handle the EUT with care and avoid damaging any internal components.
7. Refer to the user manual for further instructions on using the EUT.

Any report having not been signed by authorized approver, or having been altered without authorization, or having


not been stamped by the “Dedicated Testing/Inspection Stamp” is deemed to be invalid. Copying or excerpting portion of, or altering the content of the report is not permitted without the written authorization of AGC. The test results presented in the report apply only to the tested sample. Any objections to report issued by AGC should be submitted to AGC within 15days after the issuance of the test ref Further enquiry of validity or verification of the test report should be addressed to AGC by agc01@agccert.com.

Attestation of Global Compliance(Shenzhen)Co., Ltd

Attestation of Global Compliance(Shenzhen)Std & Tech Co., Ltd

- Tel: +86-755 2523 4088
- E-mail: agc@agccert.com
- Web: <http://www.agccert.com/>

Documents / Resources

	<p>AGC MLT-EXAG-K Hexagon Bt Controller [pdf] User Manual</p> <p>MLT-EXAG-K Hexagon Bt Controller, MLT-EXAG-K, Hexagon Bt Controller, Bt Controller, Controller</p>
---	---

Manuals+.