

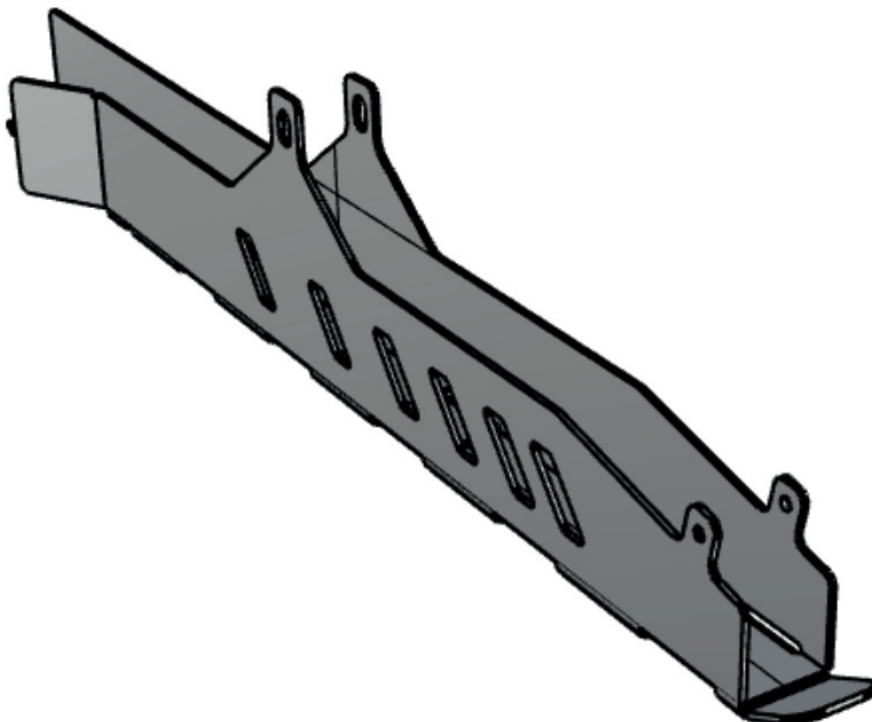


## AFX MOTORSPORTS SKI060-C Trailing A Arm Guards Installation Guide

[Home](#) » [AFX MOTORSPORTS](#) » AFX MOTORSPORTS SKI060-C Trailing A Arm Guards Installation Guide 



TRAILING A-ARM GUARDS  
INSTALLATION MANUAL



Polaris RZR XP 1000  
2-4 Seater SKI060-C

**THANK YOU**  
FOR PURCHASING AT AFX MOTORSPORTS

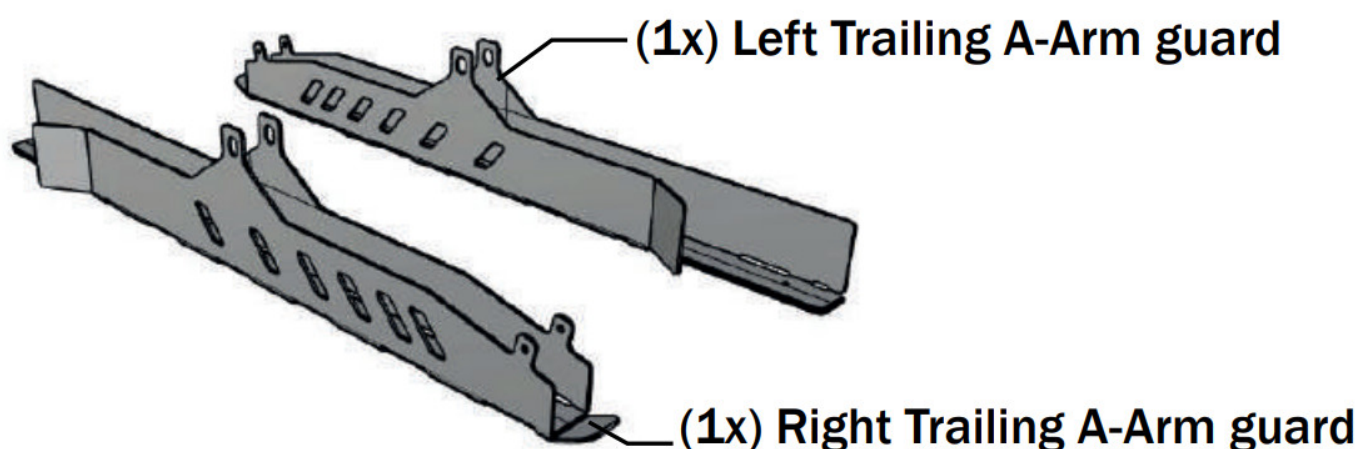
#### Contents

- [1 TRAILING A-ARM GUARDS](#)
- [2 Liability Statement](#)
- [3 Documents / Resources](#)
- [4 Related Posts](#)

## TRAILING A-ARM GUARDS

### HOW TO INSTALL

Pieces included:



### Hardware:

- (2x) Screws 1/4" x 2 1/2"
- (4x) Washers 1/4"
- (2x) Nuts 1/4"

### Tools needed (Not Included):

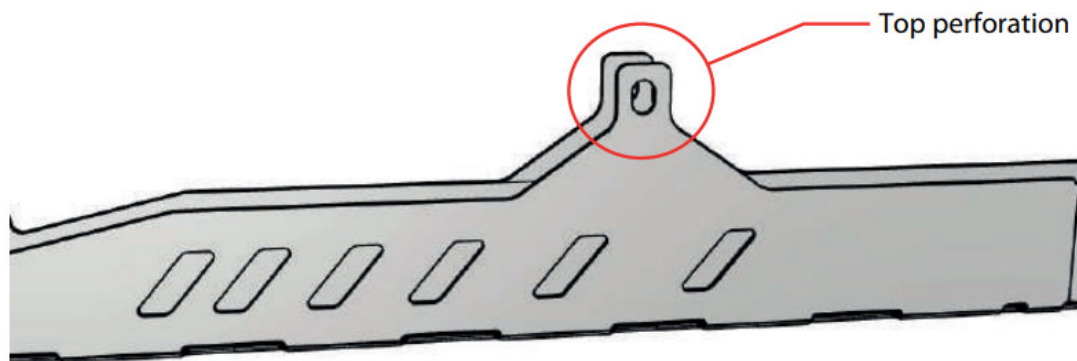
- Allen Key.
- Combination Wrench.

## Liability Statement

AFX Motorsports products are designed to best fit user's ATV/UTV under stock conditions. Adding, modifying, or fabricating any factory or aftermarket parts will void any warranty provided by AFX Motorsports and is not recommended. AFX Motorsports products could interfere with other aftermarket accessories. If user has aftermarket products on machine, contact AFX Motorsports to verify that they will work together. Although AFX Motorsports has thousands of satisfied customers, user should be aware that installing bumpers, rock sliders, spare tire carriers, etc. will change the ride of machine and may increase maintenance and part wear. Operating any off-road machine while, or after, consuming alcohol and/or drugs increases risk of bodily harm or death. No warranty or representation is made as to this product's ability to protect user from severe injury or death. AFX Motorsports urges operators and occupants to wear a helmet and appropriate riding gear at all times. By purchasing and installing AFX Motorsports products, user agrees that should damages occur, AFX Motorsports will not be held responsible for loss of time, use, labor fees, replacement parts, or freight charges. AFX Motorsports, nor any 3rd party, will not be held responsible for any direct, indirect, incidental, special, or consequential damages that result from any product purchased from AFX Motorsports. The total liability of seller to user for all damages, losses, and causes of action, if any, shall not exceed the total purchase price paid for the

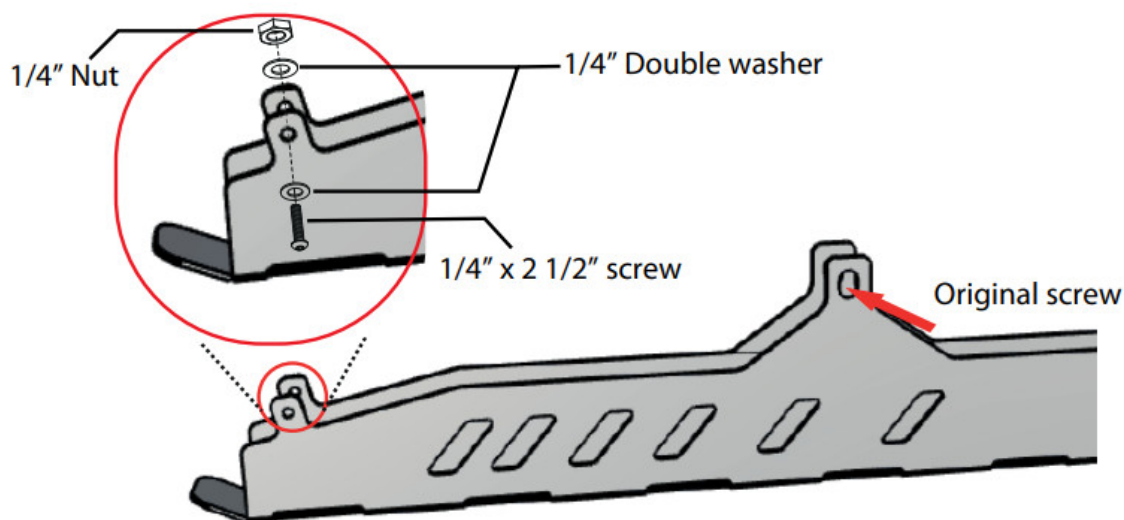
product that gave rise to the claim. AFX Motorsports will warranty only parts provided by AFX Motorsports. Any damage or problems with OEM housings, bearings, seals, or other manufacturers' products will not be covered by AFX Motorsports. AFX Motorsports parts and products are not warrantied if item was not installed properly, misused, or modified.

1. Removed the original rear axle bolt.
2. Place the rear suspension on the axle of the vehicle, where the top perforation of the part matches the perforation of the screw that was removed (as shown in the picture).



3. Insert the original screw into the top hole and one 1/4" x 2 1/2" screws in the perforations of the rear suspension tightening with double washers and one nut of 1/4".

\*Screws in the inward direction as shown in the image\*



4. Repeat the process with the other suspension and you will have finished installing your suspensions.

For technical support , please write us to:

[info@afxmotorsports.com](mailto:info@afxmotorsports.com) or call us at:

Ph. 956-242-6521









HAVE FUN AND A SAFE RIDE!

[www.afxmotorsports.com](http://www.afxmotorsports.com)

4610 Modern Lane, Laredo, TX 78041 Ph. 956-242-6521

THIS PRODUCT IS FOR OFF ROAD USE ONLY

     	<p><b><a href="#">AFX MOTORSPORTS SKI060-C Trailing A Arm Guards</a></b> [pdf] Installation Guide</p> <p>SKI060-C, SKI060-C Trailing A Arm Guards, Trailing A Arm Guards, A Arm Guards, Arm Guard S</p>
--	---

Manuals+,