



Affine Fluted Countertop Basin Installation Guide

[Home](#) » [Affine](#) » Affine Fluted Countertop Basin Installation Guide 



Contents

[1 Fluted Countertop Basin](#)

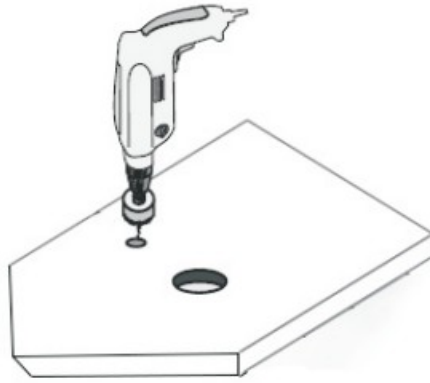
[2 Documents / Resources](#)

[2.1 References](#)

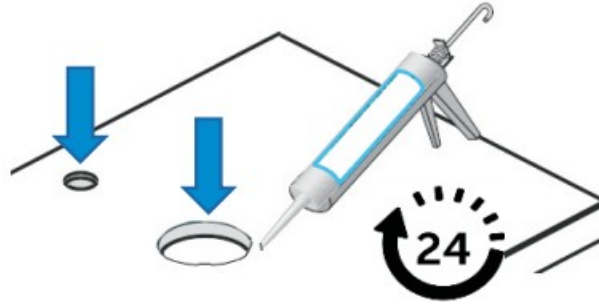
Fluted Countertop Basin

PLEASE READ THIS INSTRUCTION GUIDE FULLY PRIOR TO COMMENCING ANY PART OF THE INSTALLATION

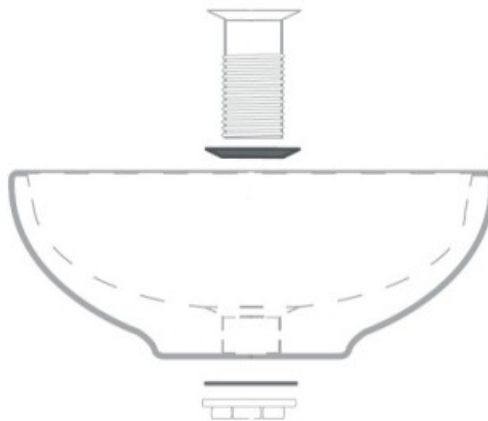
1. Cut holes if necessary for waste and tap ensuring the tap hole is positioned at a distance which does not cause interference with the basin



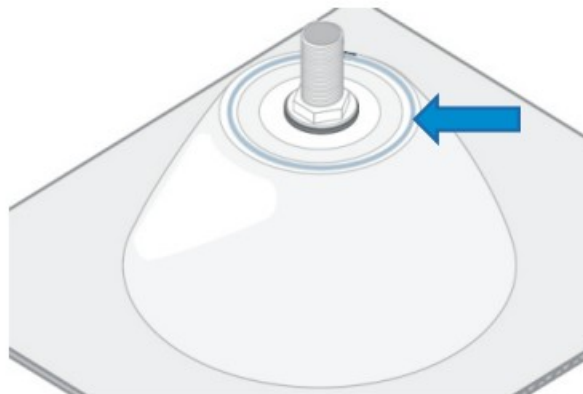
2. Seal the inside/exposed edge after cutting to prevent water/moisture penetration



3. Fit basin waste to basin, following the waste instruction



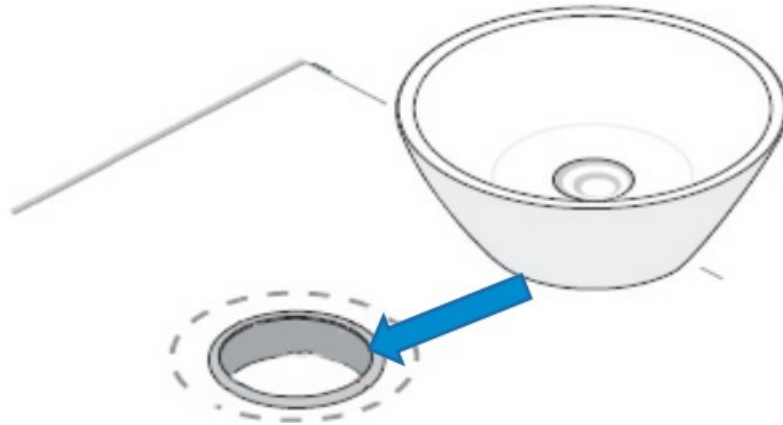
4. Apply a bead of silicone slightly in from the edge of the basin



5. Apply the silicone slightly in from the edge of the outer edge of the underside of the basin



6. Place the basin into position with the waste through the drilled hole Allow all sealant to dry for at least 24 hours before use



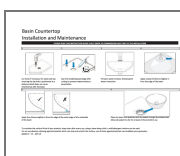
To maintain the surface finish of your product, wipe clean after every use, using a clean damp cloth, a mild detergent mixture can be used.

Do not use abrasive cleaning agents/materials which can strip and scratch the surface, use of these agents/materials can invalidate your guarantee

BASIN CT – V1 – APR 19



Documents / Resources



[Affine Fluted Countertop Basin](#) [pdf] Installation Guide
Fluted Countertop Basin, Countertop Basin, Basin

References

- [User Manual](#)

[Manuals+](#), [Privacy Policy](#)

This website is an independent publication and is neither affiliated with nor endorsed by any of the trademark owners. The "Bluetooth®" word mark and logos are registered trademarks owned by Bluetooth SIG, Inc. The "Wi-Fi®" word mark and logos are registered trademarks owned by the Wi-Fi Alliance. Any use of these marks on this website does not imply any affiliation with or endorsement.