



## How to update Multisensor 6 Z-Wave firmware. Print

[Home](#) » [Aeotec](#) » **How to update Multisensor 6 Z-Wave firmware. Print** 

This page presents download files and installation instructions to update your Multisensor 6 via OTA software and form part of the larger [Multisensor 6 user guide](#).

Our guide to [upgrading Multisensor 6 firmware via HomeSeer](#) can be found by following the given link.

As a part of our [Gen5](#) range of products, [MultiSensor 6](#) is firmware upgradable. Some gateways will support firmware upgrades over-the-air (OTA) and have MultiSensor 6's firmware upgrades packaged as part of their platform. For those that don't yet support such upgrades, MultiSensor 6's firmware can be upgraded using [Z-Stick](#) from Aeotec (or any other Z-Wave compliant Z-Wave USB Adapters from any manufacturer) and **Microsoft Windows**.

**Warning** – Updating Multisensor 6 to V1.14 will not allow you to downgrade below firmware V1.09 after updating to V1.13. The maximum threshold setting for Parameter 41 is 1.0F or 1.0C for Parameter 41 in firmware V1.14.

### Requirements:

- Windows PC (XP and above)
- Z-Wave USB Adapter (Z-Stick, UZB1, SmartStick+, or other standard Z-Wave USB Adapters can be used)

### Firmware Changelogs:

[Revision Docs – Aeotec MultiSensor 6](#) [PDF]

#### V1.15 Changelogs:

- Fixes Light Sensor reporting abnormal values on occasion

#### V1.14 Changelogs:

- Basic Set faster report trigger when motion detected (when Parameter 5 [1 byte] = 1)
- Support new hardware light sensor Si1133
  - Backwards compatible to older light sensor Si1132 (used in firmware V1.13 and under)

### To upgrade your MultiSensor 6 using a Z-Stick or any other general Z-Wave USB Adapter:

1. If your MultiSensor 6 is already part of a Z-Wave network, please remove it from that network. Your MultiSensor 6 manual touches on this and your Z-Wave gateway's / hub's user manual will provide more specific information. (skip to step 3 if it is part of a Z-Stick already)
2. Plug the Z-Stick controller to the USB port of your PC host.
3. Download the firmware that corresponds to the version of your MultiSensor 6.

**Warning:** downloading and activating the wrong firmware will brick your MultiSensor and render it broken. Bricking is not covered by warranty.

## V1.15

[Australia / New Zealand frequency – version 1.15](#) [European Union version frequency – version 1.15](#)

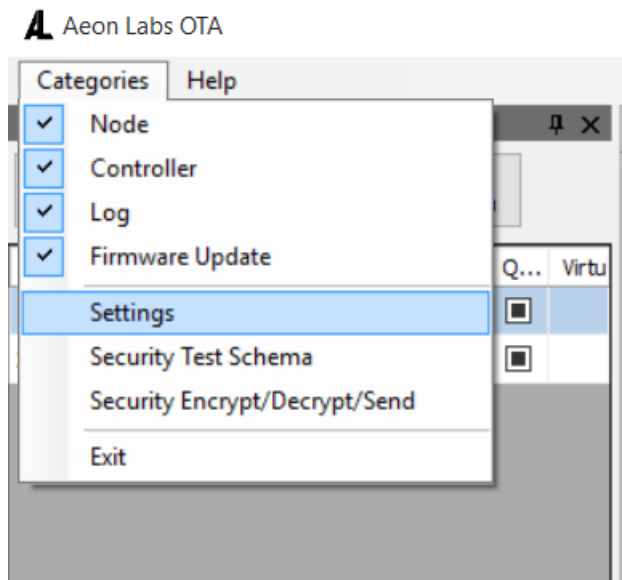
[United States version frequency – version 1.15](#)

[Russian version frequency – version 1.15](#)

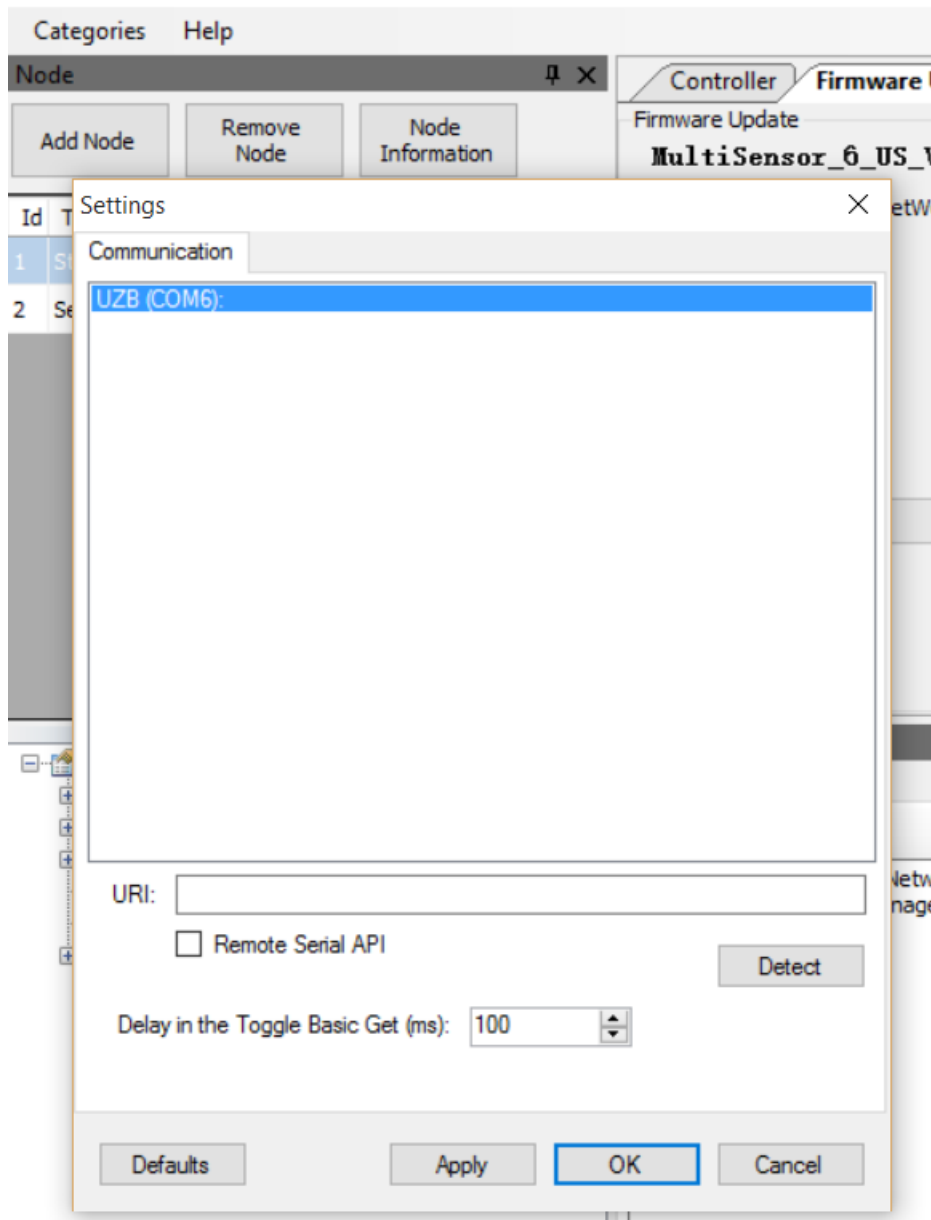
## V1.10

[Japanese version frequency – version 1.10](#)

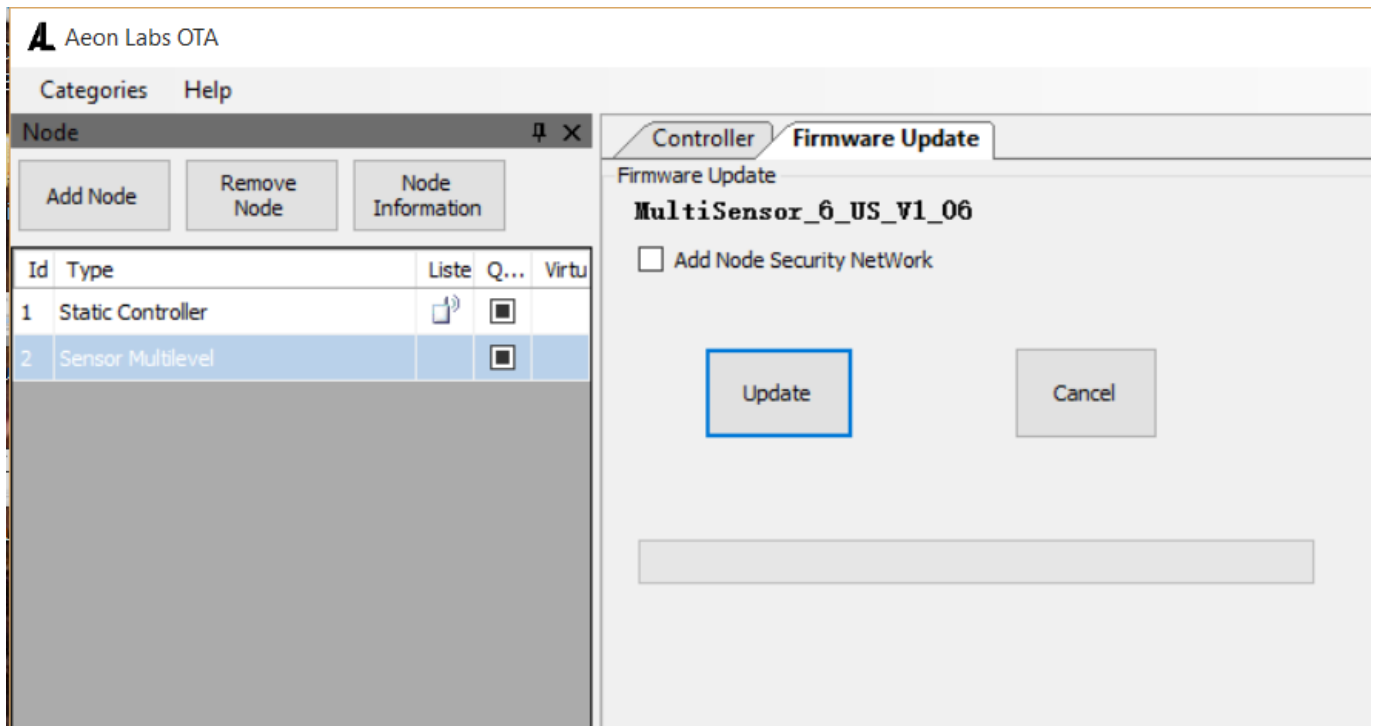
4. Unzip the firmware ZIP file and change the name of “MultiSensor\_6\_\*\*\*.ex\_” to “MultiSensor\_6\_\*\*\*.exe”.
5. Open the EXE file to load the user interface.
6. Click CATEGORIES and then select SETTINGS.



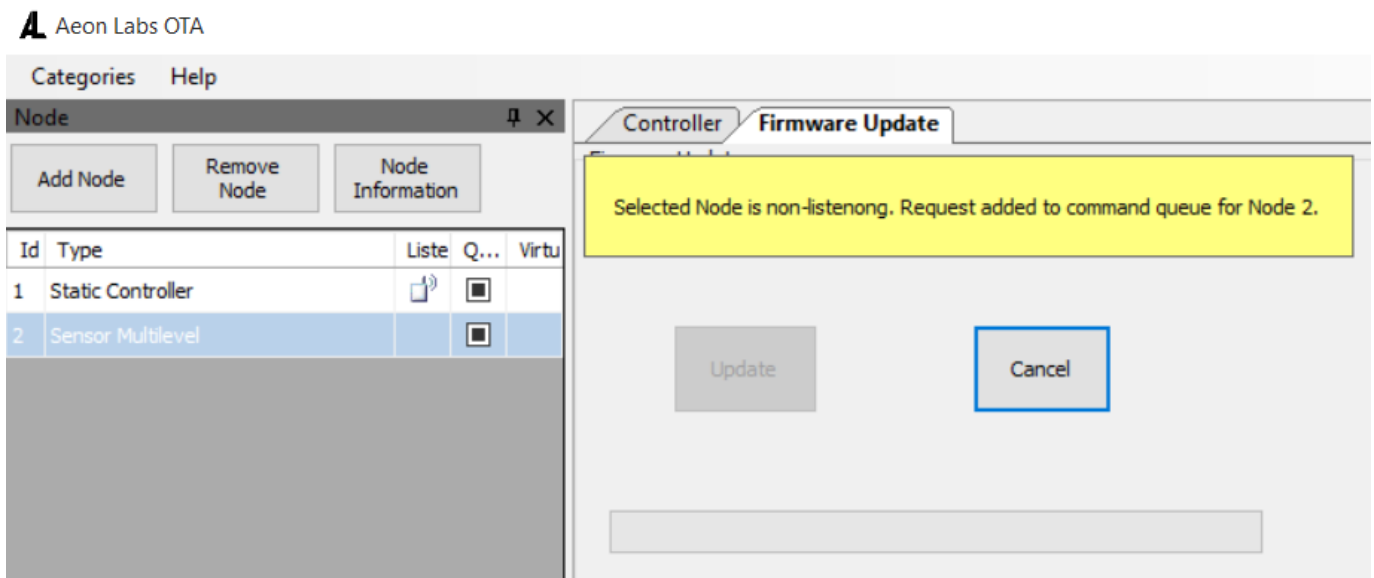
7. A new window will pop up. Click the DETECT button if the USB port is not automatically listed.



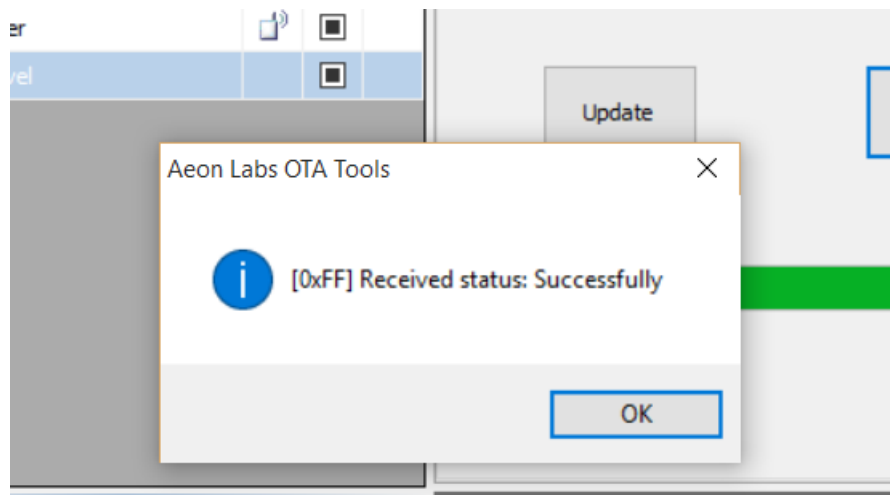
8. Select the ControllerStatic COM port or U2B, and then click OK.
9. Click ADD NODE. Let the controller into inclusion mode. Short press the MultiSensor 6's "Action Button". At this stage, the MultiSensor 6 will be added to the Z-Stick's own Z-Wave network.
10. Highlight the Multisensor 6 (shows as "Sensor Multilevel" or select it based off the Node ID).
11. Select FIRMWARE UPDATE and then click START. The over-the-air firmware upgrade of your MultiSensor 6 will begin.



12. If the Multisensor 6 is battery powered, the firmware update may not initiate right away. just tap the button on the Multisensor 6 then the update should begin.



13. After about 5 to 10 minutes, the firmware upgrade will be completed. A window will pop up with the status "Successfully" to confirm successful completion.



14. If you find any issues from your device not being able to set configurations properly, please make sure to first unpair your Multisensor 6 from your network to avoid phantom nodes, then run a factory reset by holding the Multisensor 6 action button for 20 seconds.

15. Now re-include your Multisensor 6 back into your network.

Manuals+.