



**AEM LSA800-001  
Loudspeaker  
Amplifier**



# AEM LSA800-001 Loudspeaker Amplifier Owner's Manual

[Home](#) » [AEM](#) » AEM LSA800-001 Loudspeaker Amplifier Owner's Manual 

## Contents

- [1 AEM LSA800-001 Loudspeaker Amplifier](#)
- [2 Specifications](#)
- [3 COPYRIGHT STATEMENT](#)
- [4 Introduction](#)
- [5 Product Description](#)
- [6 Design Features](#)
- [7 Specifications](#)
- [8 Installation](#)
- [9 Operation](#)
- [10 FAQ](#)
- [11 Documents / Resources](#)
  - [11.1 References](#)



**AEM LSA800-001 Loudspeaker Amplifier**



## Specifications

- **Model:** LSA800-002 Loudspeaker Amplifier
- **Rated Speaker Output Level:** 28.3 Vrms into 4 Ohms

REV 1.01 June 16, 2016  
Anodyne Electronics Manufacturing Corp.  
15-1925 Kirschner Road  
Kelowna, BC, Canada.  
V1Y 4N7  
Telephone [250-763-1088](tel:250-763-1088)  
Website: [www.aem-corp.com](http://www.aem-corp.com)

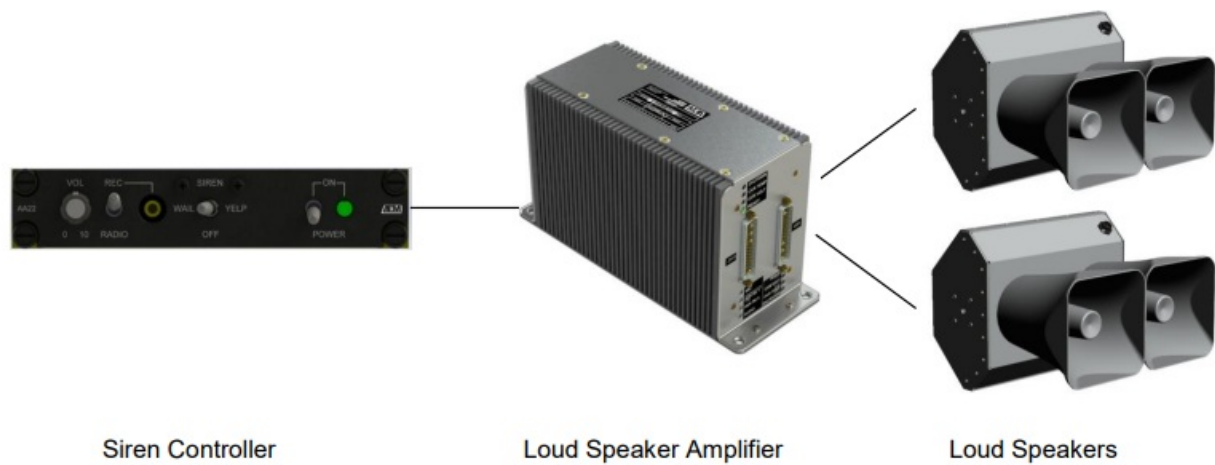
© 2016 Anodyne Electronics Manufacturing Corp. (AEM),  
All Rights Reserved  
CONFIDENTIAL AND PROPRIETARY TO ANODYNE ELECTRONICS MANUFACTURING CORP.

## COPYRIGHT STATEMENT

© 2016 Anodyne Electronics Manufacturing Corp. (AEM), All Rights Reserved  
This publication is the property of AEM and is protected by Canadian copyright laws. No part of this document may be reproduced or transmitted in any form or by any means including electronic, mechanical, photocopying, recording, or otherwise, without the prior written permission of AEM.

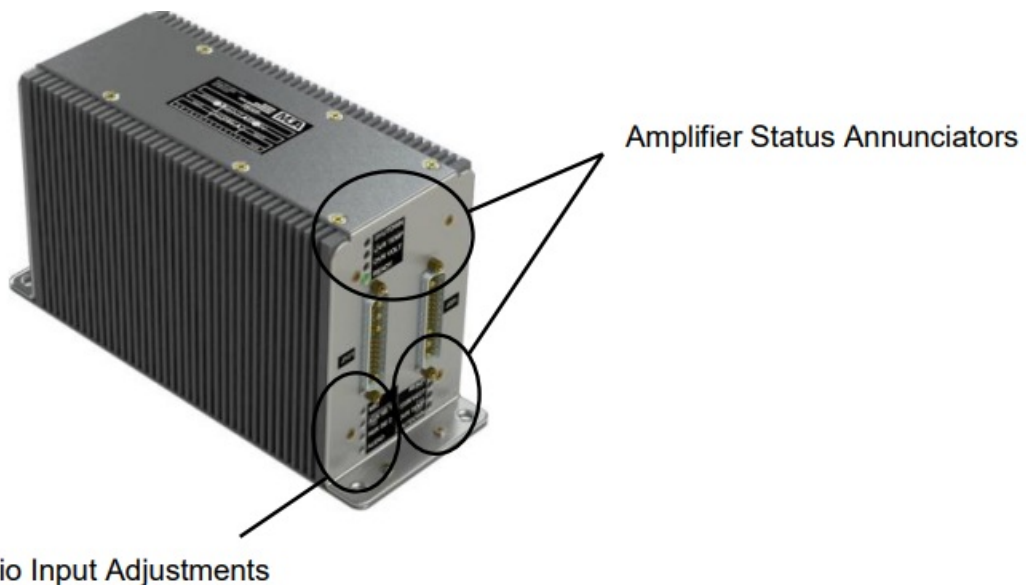
**LSA800-001 Loud Speaker Amplifier Installation and Operation Manual**





## Design Features

- The LSA800-001 has a two differential speaker outputs, each capable of driving 400 watts RMS (800 watts Peak) into 3 Ohm loads for a total of 800 watts RMS (1600 watts Peak).
- The LSA800-001 has a number of built in protection circuits that keep the amplifier from being damaged, including Output Short Circuit and Thermal Shutdown which minimize the possibility of damage to the speaker output stage.
- The LSA800-001 has four audio inputs consisting of one microphone, two single ended inputs and one differential audio input to provide input source flexibility. Each input has a field adjustable gain level to optimize speaker output power for various input signal levels.
- The amplifier status annunciators for the protection circuits and user accessible audio input adjustments are displayed externally near the D-Sub connectors.



- See Section 2.0 for further details on the Audio Input Adjustments and Section 3.0 for Status Annunciators.
- There are two Remote On/Off inputs that provide the ability for low current switched high or switched low remote activation of the amplifier if being turned on remotely from a siren controller.
- A single PA Ready output provides a switched ground for remote sensing or displaying of the amplifier ready state.

## Specifications

### Electrical Specifications

## 1. Input Operating Voltage

1. Normal Operating Conditions:
  1. Nominal: +28.0 Vdc
  2. Maximum: +30.3 Vdc
  3. Minimum: +22.0 Vdc
2. Abnormal Operating Conditions:
  1. Nominal: N/A
  2. Maximum: N/A
  3. Minimum: N/A
  4. Input Current: 40A maximum @ 28.0 Vdc

## 2. Input Signals

1. Microphone Audio (MIC HI IN)
  1. Quantity: 1
  2. Circuit Type: Single-Ended
  3. Rated Level: 250 mVrms  $\pm$  10%
  4. Impedance: 150 Ohm  $\pm$  10%
  5. Mic Bias: 13.5  $\pm$  0.5Vdc
2. Auxiliary Differential Audio (AUDIO HI IN)
  1. Quantity: 1
  2. Circuit Type: Differential
  3. Rated Level: 500 mVrms  $\pm$  10%
  4. Impedance: 1k Ohm  $\pm$  10%
3. Single-Ended Auxiliary Audio (AUX SE HI IN)
  1. Quantity: 2
  2. Circuit Type: Single-Ended
  3. Rated Level: 500mVrms  $\pm$  10%
  4. Impedance: 1k Ohm  $\pm$  10%
4. Remote On/Off (REMOTE ON/OFF 28V IN)
  1. Quantity: 1
  2. Rated Level: 28V (active high), 10V minimum
  3. Current (Sink) < 2 mA
5. Remote On/Off (REMOTE ON/OFF GND IN)
  1. Quantity: 1
  2. Rated Level: 0V (active low), 1V maximum
  3. Current (Sourced) >5 mA

## 3. Output Signals

1. **Speaker Audio (SPEAKER)**
  1. Quantity: 2
  2. Circuit Type: Differential
  3. Output Power: 400 Wrms (800 Wpk) into 3 Ohms per channel
  4. 800 Wrms (1600 Wpk) total
  5. Rated Level: 34.65 Vrms into 3 Ohms per channel
  6. Duty Cycle: 25% duty cycle siren audio, 1 min max. on time

7. 100% duty cycle voice audio
8. Freq. Response: < 3db from 200 Hz to 6 kHz
9. Distortion: < 10% @ Rated output
10. < 3% @10% of Rated output
11. Audio Noise Level:  $\geq 60$  dB below rated output of the system

## 2. PA Ready (PA READY)

1. Quantity: 2
2. Circuit Type: Single Ended, Switched ground (active low)
3. Rated Level:  $\leq 3 \Omega$
4. Current: 0.4 A maximum

## Physical Specifications

- Height 5.51" (140 mm) max
- Length 9.86" (250.4 mm) max
- Width 3.74" (95 mm) max
- Weight 6.3 lbs (2.9 kg) max.
- Mounting Remote mount using four AN4 (1/4-28) Hex fasteners and four 0.28" inside Diameter, 0.56" outside Diameter flat washers
- Recommend mounting with heatsink fins facing upwards or vertical and exposed to airflow.
- Connectors Two 36 pin D-sub combination connectors (50 pin shell) with jack post hardware
- Material/Finish Enclosure and heatsink are aluminum with Clear MIL-DTL-5541 Type II Class 3 coating
- Bonding  $\leq 2.5 \text{ m}\Omega$

## Environmental Specifications

- Temperature -30 to +60C (operating), -55 to +85C (survival)
- Altitude 25,000 feet max.
- Humidity 95% Non-condensing
- Operational Shock 6g for 11 ms
- Crash Safety Shock 20g for 11 msec (impulse), 3 sec (sustained)
- Vibration Conforms to DO-160G Category 'S' Curves B & M and Category 'U2' Curves F & F1
- Qualification of the LSA800-001 Loud Speaker Amplifier was completed in accordance with DO-160G Env. Cat. B4-BAB[SBM][U2FF1]XXXXXXA[BXX]AB[ZC][RR]BXXXAC

## Product Limitations

At rated output, utilizing siren audio, the LSA800-001 should not be operated with more than a 25% duty cycle at one minute of on time, followed by three minutes of off time.

## Installation

### Introduction

Information in this section consists of: unpacking and inspection procedures, installation procedures, post-installation checks, and installation drawings.

## Unpacking and Inspection

Unpack the equipment carefully. Inspect the unit visually for damage due to shipping and report all such claims immediately to the carrier involved. Note that each unit should have the following:

- LSA800-001 Loud Speaker Amplifier
- Product Information Card
- Certificate of Conformity or Release certification

Verify that all items are present before proceeding and report any shortage immediately to your supplier.

## Warranty

All Anodyne Electronics Manufacturing Corp. (AEM) products are warranted for 2 years. See the website [www.aem-corp.com/warranty](http://www.aem-corp.com/warranty) for complete details.

## Installation Procedures

### Warnings

#### WARNING:

When the amplifier is connected to an appropriate speaker, the system is capable of producing high sound pressure levels. Proper personal protective equipment is required to prevent hearing damage.

#### CAUTION:

- Do not obstruct ambient air flow to the heatsink fins.
- Do not operate the unit outside of the parameters listed in the Electrical Specifications section.
- Always check ADF and compass calibration after installing external speakers or power amplifiers.

#### CAUTION:

- Use shielded cable exactly as shown and ground as indicated. Installation can be severely degraded by incorrect wiring and shielding.
- Precautions are necessary when external signals, such as intercom, radio or recorders are used. The high gain of the amplifier requires care to prevent feedback or crosstalk. Ground loops and stray currents in the input line must be eliminated.
- Bundle and route the Speaker Output wires separately from low level Audio Input lines.

## Cabling and Wiring

- All wire shall be selected in accordance with the original aircraft manufacturer's Maintenance Instructions or AC43.13-1B Change 1, Paragraphs 11-76 through 11-78. Unshielded wire types shall qualify to MIL-W-22759 as specified in AC43.13-1B Change 1, Paragraphs 11-85, 11-86, and listed in Table 11-11. For shielded wire applications, use Tefzel MIL-C-27500 shielded wire with solder sleeves (for shield terminations) to make the most compact and easily terminated interconnect. Follow the interconnect drawing in Section 2.7 as required.
- Allow 3" from the end of the shielded wiring to the shield termination to allow the connector hood to be easily installed. Refer to the interconnect drawing in Section 2.7 for shield termination details. Note that the hood is a "clamshell" hood, and is installed after the wiring is complete. Aircraft harnessing shall permit the unit to be

removed for easy access to all adjustments.

- Maintain wire segregation and route wiring in accordance with the original aircraft manufacturers Maintenance Instructions.
- Reference the Interconnect drawing for wire sizing specifications. Check that the ground connection is clean and well secured, and that it shares no path with any electrically noisy aircraft accessories such as blowers, turn and bank instruments or similar loads. Power to this unit must be supplied from a separate circuit breaker or fuse (fast blow), and not attached to any other circuit breaker without additional protection. Verify that the selected circuit breaker size and wire gauge are adequate for the installation using the techniques specified in AC43.13-1B Change 1, Paragraphs 11-47 through 11-51 and 11-66 through 11-69.

## Post-Installation Checks

Ensure all connectors are tight and the mechanical installation is sound.

## Voltage/Resistance Checks

Do not connect the LSA800-001 to the wiring harness until the following conditions are met. Check the following:

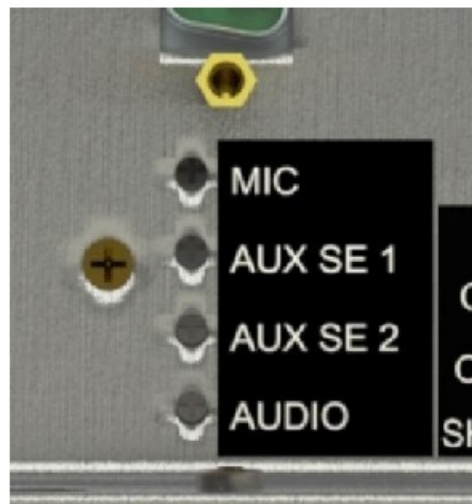
- a) Check P101 and P201, pin A1 for +28 Vdc relative to ground.
- b) Check P101 and P201, pin A4 for continuity to ground (less than 0.5Ω).
- c) Check P101 and P201, pins A2 and A3 for no connection to ground (open).

## Adjustments and Connections

The unit is shipped from the factory with all internal adjustments set to the normal test levels. Once installed in the aircraft, it may be desirable to change some of these settings to best suit the local operating environment. The internal field adjustable settings are located adjacent to the external D-Sub connector and are labeled:

- MIC (Microphone Audio)
- AUX SE 1 (Single-Ended Auxiliary Audio)
- AUX SE 2 (Single-Ended Auxiliary Audio)
- AUDIO (Auxiliary Differential Audio)

These gain adjustments each cover a 33dB range of -30dB to +3dB from their rated nominal inputs.



## Accessories Required But Not Supplied

Installation kit p/n LSA400-IKC x2 (crimp) or LSA400-IKS x2 (solder) are required to complete the installation. The



kit consists of the following:

**LSA400-IKC consists of:**

Quantity	Description	AEM Part No.
1	D-Sub, Socket, 36 Crimp Housing	120-21-001
32	Contact, Female, Signal	120-26-010
4	Contact, Female, 10-12 AWG	120-26-009
1	Hood, Metal	120-28-003

**LSA400-IKS consists of:**

Quantity	Description	AEM Part No.
1	D-Sub, Socket, 36 Solder Housing	120-20-002
4	Contact, Female, 10-12 AWG	120-26-004
1	Hood, Metal	120-28-003

**Continued Airworthiness**

Maintenance of the LSA800-001 Loud Speaker Amplifier is 'on condition' only. Periodic maintenance of this product is not required.

**Installation Drawings**

DOCUMENT	REV	DESCRIPTION	TYPE	SERIAL NO.
LSA800-001-403-0	1.10	Loud Speaker Amplifier	Interconnect	1003+
LSA800-001-403-1	1.00	PA/Siren 900 Watt System	Interconnect	1003+
LSA800-001-405-0	1.00	Loud Speaker Amplifier	Connector Map	1003+
LSA800-001-922-0	1.20	Loud Speaker Amplifier	Mechanical Installation	1003+

REVISIONS			
REV	DESCRIPTION	DATE	BY
1.10	RA5420 - SECONDARY POWER LINE WAS SHIELDED.	JAN 29/15	LAC

# LSA800-001 INSTALLATION NOTES

## NOTES:

- ALL WIRES SHOULD BE 22 AWG UNLESS OTHERWISE SPECIFIED. ALL UNSHIELDED WIRE SHALL BE SELECTED IN ACCORDANCE WITH AC43.13-1B CHANGE 1, PARAGRAPHS 11-76 THROUGH 11-78. WIRE TYPES SHOULD BE TO MIL-W-22759 AS SPECIFIED IN AC43.13-1B CHANGE 1, PARAGRAPHS 11-85, 11-86 AND LISTED IN TABLE 11-11. ALL SHIELDED WIRE/CABLE SHOULD BE IN ACCORDANCE WITH MIL-C-27500.
  - CABLE LENGTH NOT TO EXCEED 30 FT [9.14 M] UNLESS OTHERWISE SPECIFIED.
- ⚠ CABLE LENGTH NOT TO EXCEED 3.3 FT [1.0 M].
- ⚠ USE ONLY ONE OF THE REMOTE ON/OFF OPTIONS.
- ⚠ SYSTEM CROSSTALK MAY BE EFFECTED BY STYLE OF HEADSET AND JACK. CHECK SPECIFICATIONS AND SYSTEM REQUIREMENTS BEFORE SELECTING AND INSTALLING SAME.
- ⚠ CABLE LENGTH NOT TO EXCEED 3.3 FT [1.0 M].
- ⚠ SHIELD RETURNS SHOULD BE GROUNDED TO LOCAL AIRFRAME GROUND.
- ⚠ SHIELD LENGTH NOT TO EXCEED 1 FT [0.3 M].  
SPEAKER OUTPUT WIRES TO BE BUNDLED AND ROUTED SEPARATELY FROM LOW LEVEL AUDIO INPUT LINES.
- ⚠ NO CONNECTION IN THE AIRCRAFT.
- ⚠ SWITCHED GROUND (ACTIVE LOW) OUTPUT WHEN PA IS IN ACTIVE/READY STATE, MAX 0.4 A.

## DEFINITIONS:

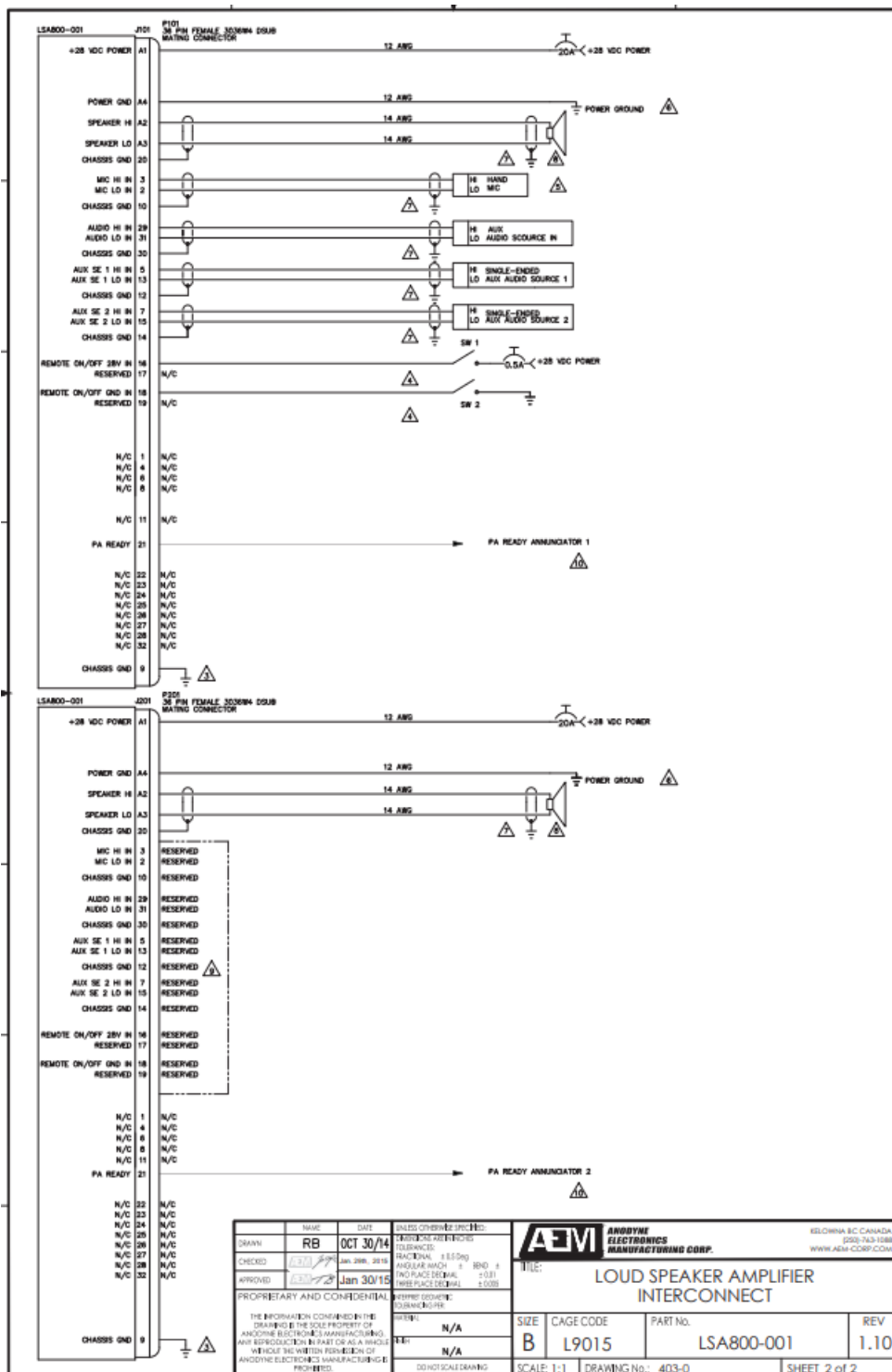
- N/C: NO CONNECTION. THE PIN IS NOT CONNECTED TO ANYTHING INTERNALLY, AND THEREFORE SHALL HAVE NO CONNECTION EXTERNALLY.
- N/C SPARE: NO CONNECTION INTERNALLY, BUT A SPARE WIRE SHALL BE INSTALLED IN THE WIRE HARNESS.
- RESERVED: MAY BE CONNECTED AND USED IN THE FUTURE. THE CIRCUITRY MAY BE PRESENT OR ADDED TO ACTIVATE THE FUNCTION. THE PIN MAY BE USED FOR TEST PURPOSES. THERE IS NO EXTERNAL CONNECTION.
- RESERVED SPARE: RESERVED, BUT INSTRUCTIONS SHALL BE FOLLOWED TO ACTIVATE THE CIRCUITRY. A SPARE WIRE SHALL BE INSTALLED IN THE WIRE HARNESS.

DRAWN: <b>RB</b> CHECKED: <b>[Signature]</b> APPROVED: <b>[Signature]</b> DATE: <b>OCT 30/14</b> DATE: <b>JAN 30/15</b>	DATE: <b>OCT 30/14</b> DATE: <b>JAN 30/15</b> DATE: <b>JAN 30/15</b>	DATE: <b>OCT 30/14</b> DATE: <b>JAN 30/15</b> DATE: <b>JAN 30/15</b>	<b>AEM</b> <b>ANDRYNE ELECTRONICS MANUFACTURING CORP.</b> 1000 HWY 100 CANADA (505) 743-1088 WWW.AEM-CORP.COM	TITLE: <b>LOUD SPEAKER AMPLIFIER INTERCONNECT</b> SIZE: <b>B</b> CAGE CODE: <b>L9015</b> PART No.: <b>LSA800-001</b> REV: <b>1.10</b>
---	--	--	---	---

THE INFORMATION CONTAINED HEREIN IS THE SOLE PROPERTY OF ANDRYNE ELECTRONICS MANUFACTURING CORP. AND REPRODUCTION IN PART OR AS A WHOLE WITHOUT THE WRITTEN PERMISSION OF ANDRYNE ELECTRONICS MANUFACTURING CORP. IS PROHIBITED.

DO NOT SCALE DRAWING

SCALE: 1:1 DRAWING No.: 403-0 SHEET 1 of 2




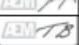

## LSA800-001 INSTALLATION NOTES

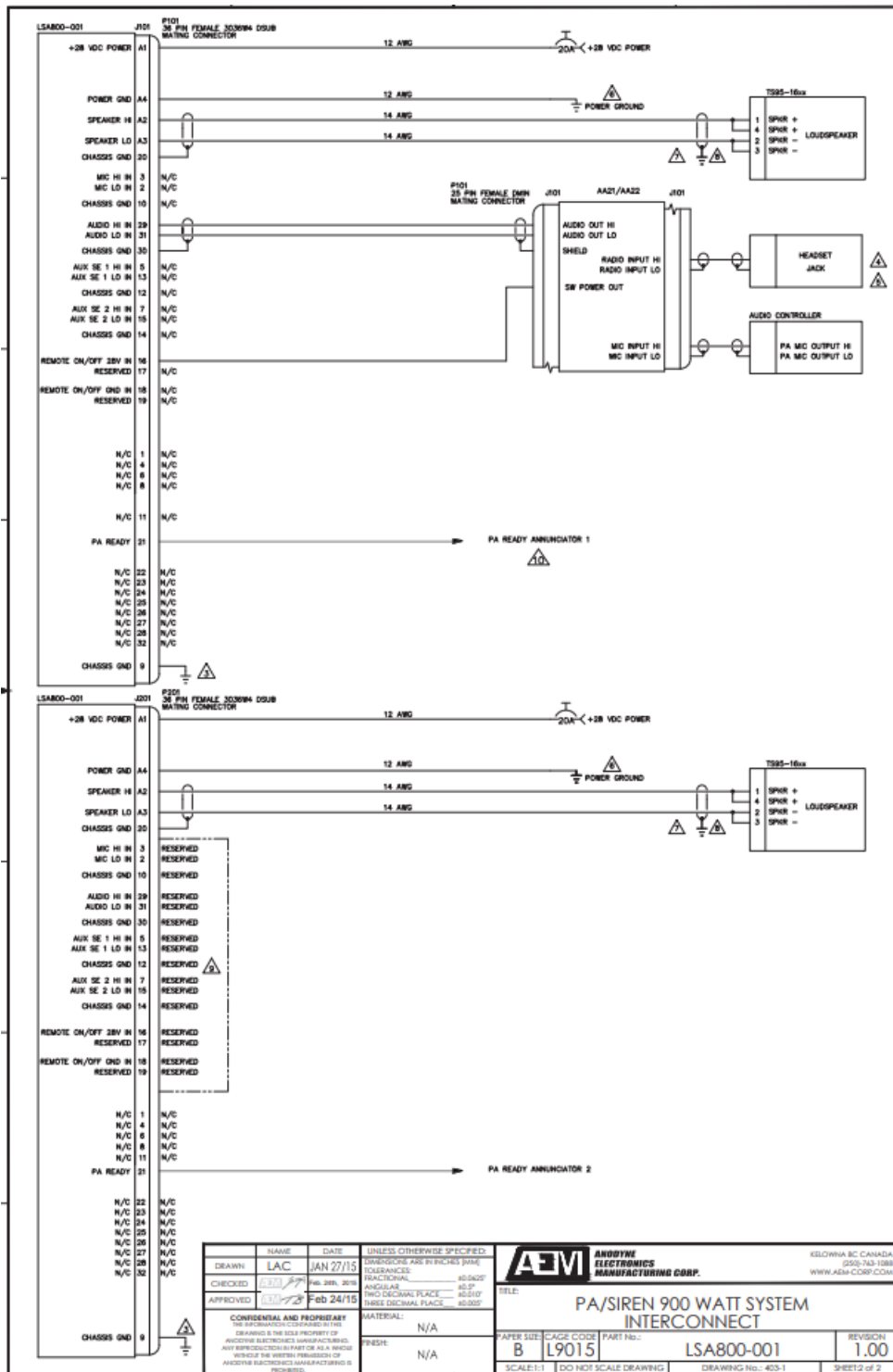
### NOTES:

1. ALL WIRES SHOULD BE 22 AWG UNLESS OTHERWISE SPECIFIED. ALL UNSHIELDED WIRE SHALL BE SELECTED IN ACCORDANCE WITH AC43.13-1B CHANGE 1, PARAGRAPHS 11-76 THROUGH 11-78. WIRE TYPES SHOULD BE TO MIL-W-22759 AS SPECIFIED IN AC43.13-1B CHANGE 1, PARAGRAPHS 11-85, 11-86 AND LISTED IN TABLE 11-11. ALL SHIELDED WIRE/CABLE SHOULD BE IN ACCORDANCE WITH MIL-C-27500.
2. CABLE LENGTH NOT TO EXCEED 30 FT [9.14 M], UNLESS OTHERWISE SPECIFIED.
3. CABLE LENGTH NOT TO EXCEED 1 FT [0.3 M].
4. SYSTEM CROSSTALK MAY BE EFFECTED BY STYLE OF HEADSET AND JACK. CHECK SPECIFICATIONS AND SYSTEM REQUIREMENTS BEFORE SELECTING AND INSTALLING SAME.
5. OPTIONAL. PARALLEL TO HEADPHONE (1 ONLY) CONNECTION FOR MONITORING RADIOS VIA EXTERNAL P.A. SPEAKER.
6. CABLE LENGTH NOT TO EXCEED 3.3 FT [1.0 M].
7. SHIELDS SHOULD BE GROUNDED TO LOCAL AIRFRAME GROUND, UNLESS OTHERWISE SPECIFIED.
8. SHIELD LENGTH NOT TO EXCEED 1 FT [0.3 M]. SPEAKER OUTPUT WIRES TO BE BUNDLED AND ROUTED SEPARATELY FROM LOW LEVEL AUDIO INPUT LINES.
9. NO CONNECTION IN THE AIRCRAFT.
10. SWITCHED TO POWER GROUND WHEN ACTIVE. CURRENT (SINK) 0.4A MAX.

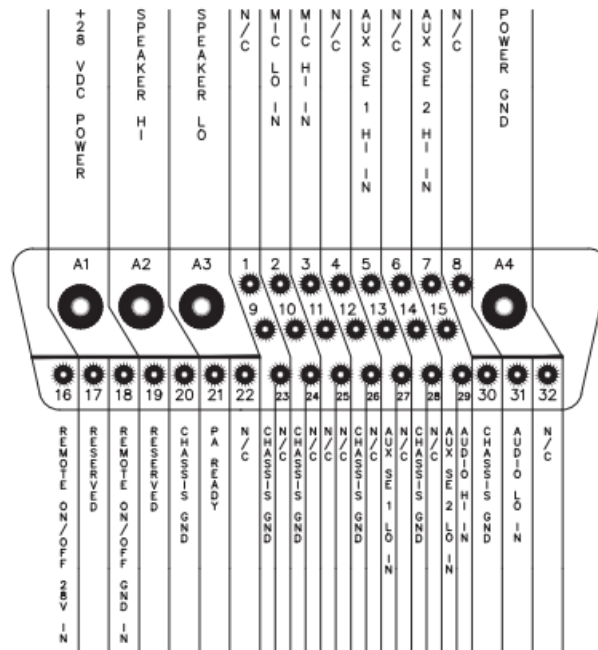
### DEFINITIONS:

- N/C: NO CONNECTION. THE PIN IS NOT CONNECTED TO ANYTHING INTERNALLY, AND THEREFORE SHALL HAVE NO CONNECTION EXTERNALLY.
- N/C SPARE: NO CONNECTION INTERNALLY, BUT A SPARE WIRE SHALL BE INSTALLED IN THE WIRE HARNESS.
- RESERVED: MAY BE CONNECTED AND USED IN THE FUTURE. THE CIRCUITRY MAY BE PRESENT OR ADDED TO ACTIVATE THE FUNCTION. THE PIN MAY BE USED FOR TEST PURPOSES. THERE IS NO EXTERNAL CONNECTION.
- RESERVED SPARE: (RSV SP) RESERVED, BUT INSTRUCTIONS SHALL BE FOLLOWED TO ACTIVATE THE CIRCUITRY. A SPARE WIRE SHALL BE INSTALLED IN THE WIRE HARNESS.




NAME		DATE		UNLESS OTHERWISE SPECIFIED:		 <b>ANDDYNE ELECTRONICS MANUFACTURING CORP.</b> KELOWNA BC CANADA (250)-763-1088 WWW.AEM-CORP.COM					
DRAWN	LAC	JAN 27/15	DIMENSIONS ARE IN INCHES		TOLERANCES:						
CHECKED		Feb. 24th, 2015	FRACTIONAL: ± 0.5 Deg		ANGULAR: MAX ± BEND ±		TITLE: <b>PA/SIREN 900 WATT SYSTEM INTERCONNECT</b>				
APPROVED		Feb 24/15	TWO PLACE DECIMAL ± 0.01		THREE PLACE DECIMAL ± 0.005						
PROPRIETARY AND CONFIDENTIAL			INTERPRET GEOMETRIC TOLERANCING PER:								
THE INFORMATION CONTAINED IN THIS DRAWING IS THE SOLE PROPERTY OF ANDDYNE ELECTRONICS MANUFACTURING. ANY REPRODUCTION IN PART OR AS A WHOLE WITHOUT THE WRITTEN PERMISSION OF ANDDYNE ELECTRONICS MANUFACTURING IS PROHIBITED.			MATERIAL		SIZE		CAGE CODE	PART No.	REV		
			N/A		A		L9015		LSA800-001		1.00
			N/A								
DO NOT SCALE DRAWING			SCALE: 1:1		DRAWING No.: 403-1		SHEET 1 of 2				






P101  
36 PIN D-MIN SOCKET  
MATING CONNECTOR

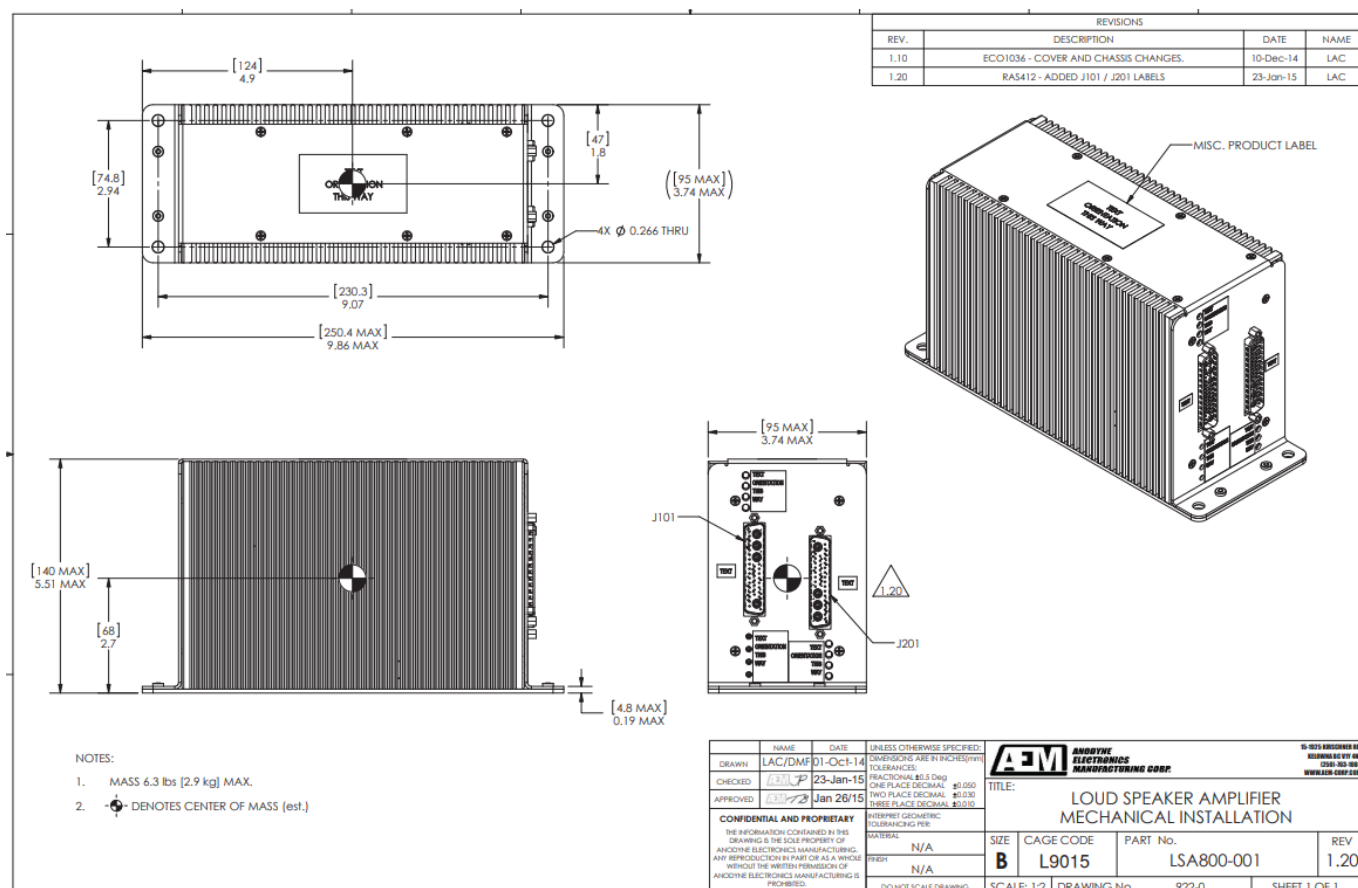


VIEW IS FROM REAR OF AIRFRAME CONNECTOR.

NAME		DATE	UNLESS OTHERWISE SPECIFIED:	 <b>ANODYNE ELECTRONICS MANUFACTURING CORP.</b>		KELOWNA BC CANADA (250)-763-1088 WWW.AEM-CORP.COM	
DRAWN	RB	OCT 30/14	DIMENSIONS ARE IN INCHES TOLERANCES: FRACTIONAL $\pm 0.005$ DECIMAL $\pm 0.01$ ANGULAR: MAX $\pm 0.01$ TWO PLACE DECIMAL $\pm 0.01$ THREE PLACE DECIMAL $\pm 0.005$	<b>TITLE:</b> LOUD SPEAKER AMPLIFIER CONNECTOR MAP			
CHECKED		OCT 30/14	MATERIAL: — FINISH: — DO NOT SCALE DRAWING				
APPROVED		OCT 31/14	PROPRIETARY AND CONFIDENTIAL THE INFORMATION CONTAINED IN THIS DRAWING IS THE SOLE PROPERTY OF ANODYNE ELECTRONICS MANUFACTURING. ANY REPRODUCTION IN PART OR AS A WHOLE WITHOUT THE WRITTEN PERMISSION OF ANODYNE ELECTRONICS MANUFACTURING IS PROHIBITED.	SCALE: 1:1 DRAWING No.: 405-0 SHEET 1 of 2			



NAME		DATE		UNLESS OTHERWISE SPECIFIED:		 <b>ANODYNE ELECTRONICS MANUFACTURING CORP.</b>		KELOWNA, BC CANADA (250)-743-1088 WWW.AEM-CORP.COM							
DRAWN	RB	OCT 30/14		TOLERANCES UNLESS OTHERWISE SPECIFIED:		TITLE: <b>LOUD SPEAKER AMPLIFIER CONNECTOR MAP</b>									
CHECKED		OCT 30/14		FRACTIONAL ± 0.006g ANGULAR: MACH ± BEND ± TWO PLACE DECIMAL ± 0.01 THREE PLACE DECIMAL ± 0.005											
APPROVED		OCT 31/14													
PROPRIETARY AND CONFIDENTIAL				INTERPRET DRAWING TO TOLERANCING PER:											
THE INFORMATION CONTAINED IN THIS DRAWING IS THE SOLE PROPERTY OF ANODYNE ELECTRONICS MANUFACTURING. ANY REPRODUCTION IN PART OR AS A WHOLE WITHOUT THE WRITTEN PERMISSION OF ANODYNE ELECTRONICS MANUFACTURING IS PROHIBITED.						MATERIAL: —		SIZE: <b>A</b>		CAGE CODE: <b>L9015</b>		PART No. <b>LSA800-001</b>		REV <b>1.00</b>	
						FINISH: —		SCALE: 1:1		DRAWING No.: 405-1				SHEET 2 of 2	
						DO NOT SCALE DRAWING									



## Operation

### Introduction

Information in this section consists of functional and operational procedures for the LSA800-001 Loud Speaker Amplifier.

### General

The LSA800-001 Loud Speaker Amplifier has no operator accessible controls. During installation, it may be determined that internal level adjustments are required. Qualified personnel only shall complete internal level adjustments. See Section 2 for adjustments.

### Controls and Indicators

The LSA800-001 has no normal user operational control aspects. However the LSA800-001 does have eight indicators located adjacent to the external D-sub connectors.

### Annunciators

The LSA800-001 provides two groups of annunciators, one group for each speaker output. Each group contains three red and one green annunciator, to indicate the following status conditions:

- SHUTDWN Red – Output short circuit and/or extended period of over temp warning\*
- OVR TEMP Red – Class D amplifier over temp threshold exceeded\*\*
- OVR VOLT Red – Input over voltage threshold exceeded\*\*
- READY Green – Amplifier is powered and operational



- SHUTDWN	Red -	Output short circuit and/or extended period of over temp warning*
- OVR TEMP	Red -	Class D amplifier over temp threshold exceeded**
- OVR VOLT	Red -	Input over voltage threshold exceeded**
- READY	Green -	Amplifier is powered and operational



The annunciation will not be cleared until the fault condition has been removed or corrected and an external Switched Power reset is performed

The annunciations will not be cleared until the fault condition has been removed or corrected.

## Remote ON/OFF

- The LSA800-001 is activated and deactivated remotely using one of the two types of Remote On/Off input pins.
- The REMOTE ON/OFF 28V IN input pin is activated by applying +28Vdc to the input pin and de-activated by removing +28Vdc.
- The REMOTE ON/OFF GND IN input pin is activated by applying a ground to the input pin and deactivated by removing the ground.

CONFIDENTIAL AND PROPRIETARY TO ANODYNE ELECTRONICS MANUFACTURING CORP.

## FAQ

### Q: What is the difference between LSA800-002 and LSA800-001 models?

**A:** The main difference lies in the rated speaker output level. LSA800-002 provides 28.3 Vrms into 4 Ohms, whereas LSA800-001 offers 34.65 Vrms into 3 Ohms.

### Q: Where can I find detailed installation instructions?

**A:** Detailed installation information can be located in ASM-LSA800 Section 2.0 of the manual, along with specific installation drawings listed in this supplement.

## Documents / Resources

	<p><a href="#">AEM LSA800-001 Loudspeaker Amplifier</a> [pdf] Owner's Manual LSA800-001, LSA800-001 Loudspeaker Amplifier, Loudspeaker Amplifier, Amplifier</p>
--	---

## References

- [User Manual](#)

## **Manuals+. Privacy Policy**

This website is an independent publication and is neither affiliated with nor endorsed by any of the trademark owners. The "Bluetooth®" word mark and logos are registered trademarks owned by Bluetooth SIG, Inc. The "Wi-Fi®" word mark and logos are registered trademarks owned by the Wi-Fi Alliance. Any use of these marks on this website does not imply any affiliation with or endorsement.