



# AEi AMT, ASP Series Analog DECT Phone User Manual

[Home](#) » [AEi](#) » AEi AMT, ASP Series Analog DECT Phone User Manual 

## Contents

- [1 AEi AMT, ASP Series Analog DECT Phone](#)
- [2 Call Options](#)
  - [2.1 Overview](#)
  - [2.2 Package Content](#)
  - [2.3 Product Description](#)
  - [2.4 Back View](#)
  - [2.5 Connecting the Phone](#)
  - [2.6 Operation](#)
  - [2.7 Making a Call](#)
- [3 Documents / Resources](#)



## AEi AMT, ASP Series Analog DECT Phone



## Product Information

The Analog DECT Phone is a full-feature telephone that provides voice communication. It is equipped with various functions and features to enhance your calling experience. The package includes the following items:

1. Base Unit
2. Handset
3. Stand
4. AC Adaptor
5. RJ-45 Cable
6. Quick Installation Guide (QIG)

### Front View

The front view of the phone includes the following keys:

- **Message waiting indicator:** Indicates an incoming call or unread messages.
- **Speed dial keys:** Allows you to dial preset numbers quickly.
- **Alphanumerical keys:** Used to enter phone numbers and texts.
- **Function keys:** Includes HOLD, REDIAL, CONF, MUTE, SPEAKER, MESSAGE, VOLUME, and LINE 1 / LINE 2 keys for various call functions.

### Back View

The back view of the phone includes the following ports:

1. **DC 6V Power jack:** Connects to the AC power adapter.
2. **PSTN line port:** Connects to the PSTN line.

## Product Usage Instructions

### Connecting the Phone

To connect the phone:

1. Connect the DC 6V Power jack to the AC power adapter.
2. Connect the PSTN line port to the PSTN line.

### Answering a Call

To answer an incoming call:

- Pick up the handset to answer the call.
- Press the Line (Line1/Line2) or Speaker key to answer the call.

### Making a Call

To make a call:

- Dial the telephone number using the alphanumeric keypad.
- Press the # key to force dialing or wait for 4 seconds before the number is dialed automatically.

## Using Speed Dial Keys

To use the speed dial keys:

- Press the speed dial hotkey that is pre-assigned to the phone number you want to call.
- The call will start automatically.

## Call Options

While on a call, you have additional options:

- **Using the Speaker Phone:** Press the SPEAKER key to enable the Speakerphone function for hands-free operation. Press the SPEAKER key again to terminate the call.

## Overview

This phone is a full-feature telephone that provides voice communication. Read this QIG carefully to learn how to operate this product and take advantage of its features.

## Package Content

When unpacking the phone, ensure all the following items are present and undamaged. If anything appears to be missing or broken, contact your dealer for a replacement.

1. Base Unit
2. Handset
3. Stand
4. AC Adaptor
5. RJ-45 Cable
6. Quick Installation Guide (This document)

## Product Description

The following contains important information to help you familiarize with the functions of the VoIP phone.

### Front View

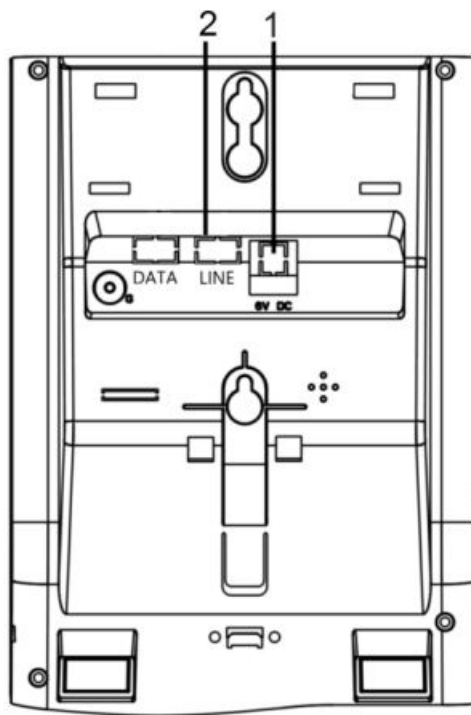


## Base unit keys

	Name	Description
1	Message waiting indicator	To indicate an incoming call or unread messages.
2	Speed dial keys	Press to dial the preset number.
3	Alphanumerical keys	Press these keys to enter phone numbers and texts.
4	Function keys	
	HOLD	Press to put an active call on hold.
	REDIAL	Press to call the last number dialed.

	Name	Description
	CONF	Press to activate the three-way conference call.
	MUTE	Press to mute a call.
	SPEAKER	Press to activate the speakerphone for hands free conversations.
	MESSAGE	Press to retrieve voice messages.
	VOLUME	Press to increase or decrease the volume of the ringer tone or speakerphone.
	LINE 1 / LINE 2	<p>To indicate a line been used as the following status:</p> <ul style="list-style-type: none"> <li>– Idle: No LED indication.</li> <li>– Pre-dialing a call: Green LED.</li> <li>– In call: Red LED.</li> <li>– In on-hold call: Blinking red LED.</li> </ul>

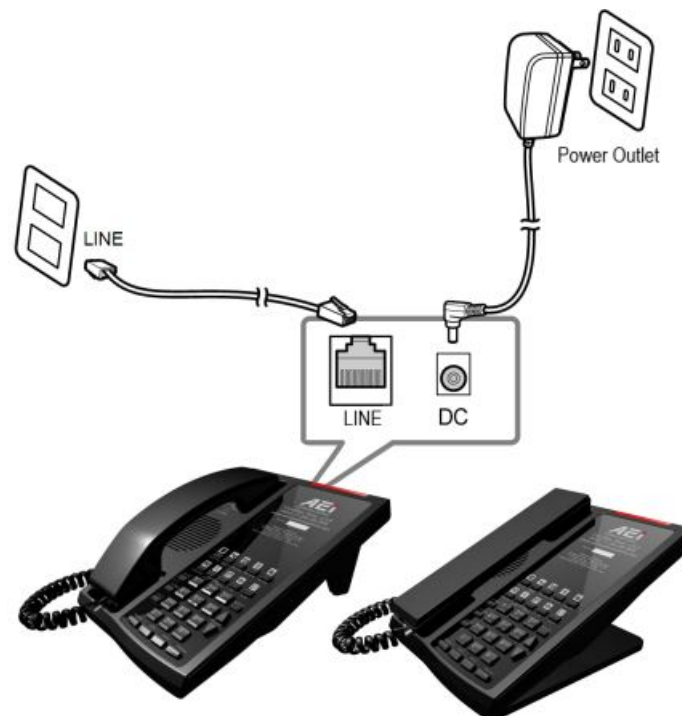
## Back View



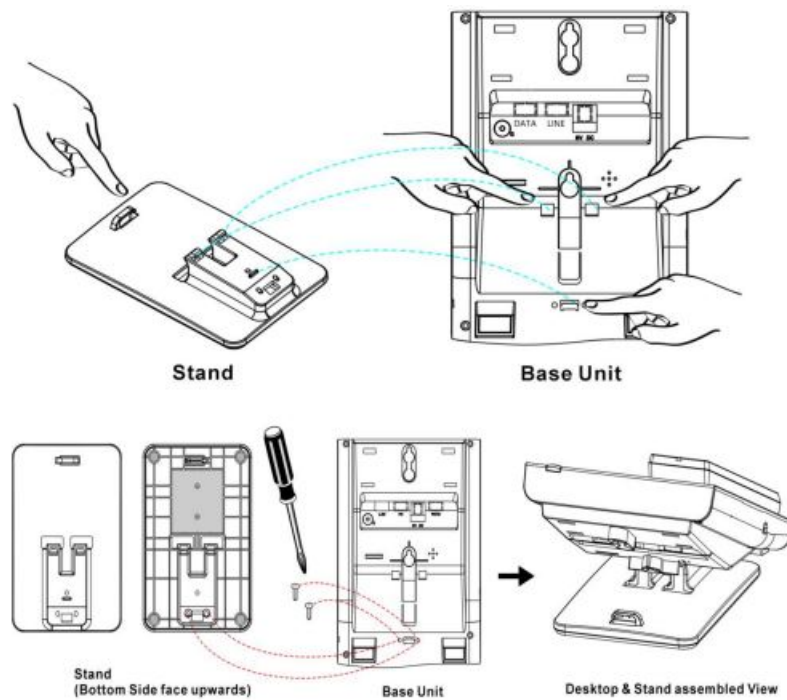
NO.	Name	Description
1	DC 6V Power jack	Connects to AC power adapter.
2	PSTN line port	Connects to PSTN line.

## Connecting the Phone

The following illustration shows how to connect the power



The following illustration shows how to install the phone and stand.



## Operation

### Answering a Call

An incoming call is indicated by a ringing tone and a flashing indicator. You can answer the call by doing one of the followings:

- Pick up the handset to answer the call.
- Press the Line (Line1/Line2)/Speaker key to answer the call.

### Making a Call

#### Dialing with the Keypad

- Enter the telephone number with the alphanumerical keypad.
- After entering the number you want to call, press the # key to force dialing or wait for 4 seconds before the number is dialed automatically.

#### Using the Speed dial keys

You can use the 10 pre-assigned speed dial hotkeys, to configure the most commonly dialed numbers. Use the function to dial a number quickly, instead of keying in a complete number.

To call a number using speed dialing, follow the steps below:

Press the speed dial hotkey that has been pre-assigned to the phone number and the call will start automatically.

### Call Options

While a call is in progress, a number of additional options are available.

#### Using the Speaker Phoe

For hands free operation, you can use the built-in speaker to talk on the phone. To use the speakerphone, follow the steps below:

While talking on the phone, press the SPEAKER key on the phone to enable the Speakerphone function. Press SPEAKER key again to terminate the call.

### Puttng a Call on Hold

You may want to put a call on hold temporarily while doing some work or attending to a second incoming or outgoing call. To put a call on hold, do one of the following:

- Press the HOLD key on the phone to put the call on hold.
- When you receive a second call, press the next available LINE key to attend to the new call, and the first call will be put on hold automatically.

### Checking Voice Messages

If the message waiting indicator at top of handset or base unit lights up in red, it indicates that there are one or more new messages in voicemail box.


Press the MESSAGE key on the phone to retrieve voice messages.

### Support

For technological support, please email to [support@aeicommunication.com](mailto:support@aeicommunication.com).

---

## Documents / Resources

 <p>Analog DECT Phone</p> <p>QIG V 1.00</p>	<p><a href="#">AEi AMT, ASP Series Analog DECT Phone</a> [pdf] User Manual</p> <p>ASP-9210-SM-7979, AMT-9210-SM-7979, AMT-9110-SM-7979, AMT ASP Series Analog DECT Phone, AMT Series Analog DECT Phone, ASP Series Analog DECT Phone, Analog DECT Phone, Analog Phone, DECT Phone, Phone</p>
------------------------------------------------------------------------------------------------------------------------------------	----------------------------------------------------------------------------------------------------------------------------------------------------------------------------------------------------------------------------------------------------------------------------------------------