



AEi AMT-8210-SMK Single-Line Analog Cordless Full Duplex Speakerphone User Manual

[Home](#) » [AEi](#) » AEi AMT-8210-SMK Single-Line Analog Cordless Full Duplex Speakerphone User Manual 

Contents

- [1 AEi AMT-8210-SMK Single-Line Analog Cordless Full Duplex Speakerphone](#)
- [2 Package Contents](#)
- [3 Product Description](#)
 - [3.1 Front View](#)
 - [3.2 Back View](#)
- [4 Connecting the Phone](#)
- [5 Operation](#)
- [6 Documents / Resources](#)



AEi AMT-8210-SMK Single-Line Analog Cordless Full Duplex Speakerphone



Analog DECT Phone

Model: AMT-8210-SMK / AMT-8110-SMK ASP-8210-SMK / ASP-8110-SMK

Package Contents

Item	Description
1. Base Unit	Main unit of the phone
2. Cordless Handset	Wireless handset for mobility
3. Stand	Stand for placing the handset
4. Battery	Battery for the cordless handset
5. AC Adaptor	Power adapter for the base unit
6. Quick Installation Guide (QIG)	This document

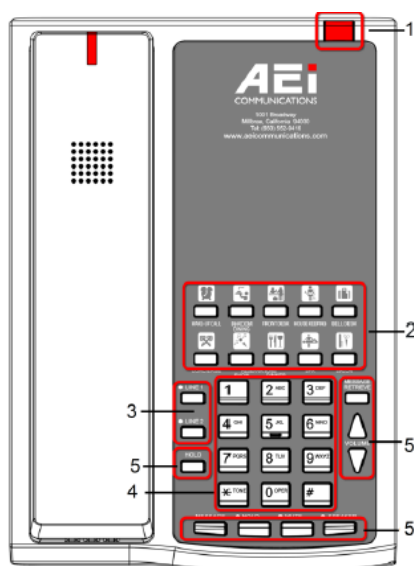
When unpacking the phone, ensure all the following items are present and undamaged. If anything appears to be missing or broken, contact your dealer for a replacement.

1. Base Unit
2. Cordless Handset
3. Stand
4. Battery
5. AC Adaptor
6. Quick Installation Guide (This document)

Product Description

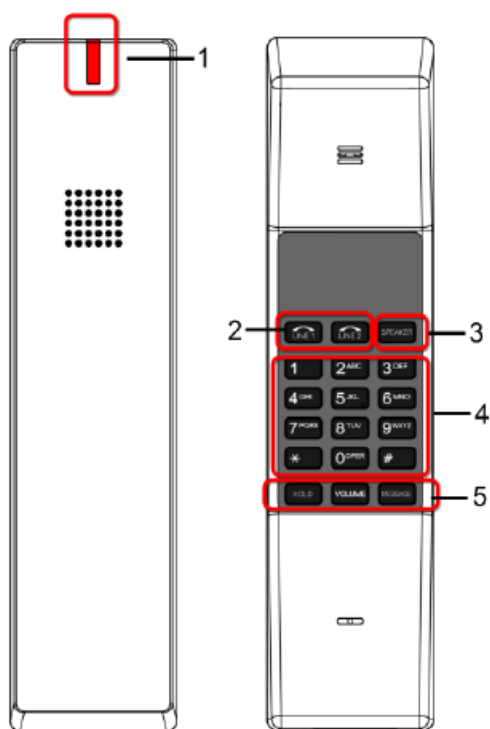
The following contains important information to help you familiarize with the functions of the analog phone.

Front View



Base Unit:

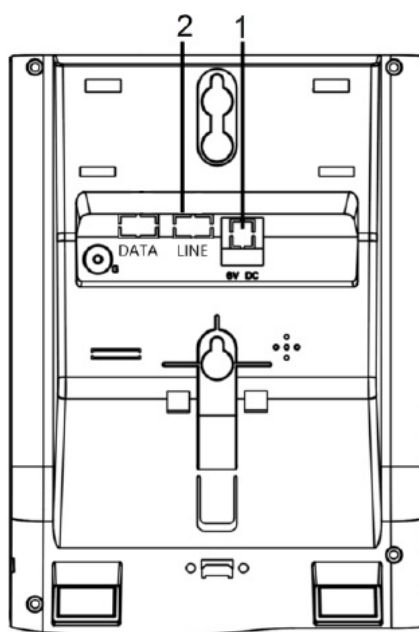
Name	Description
1. Message waiting indicator	To indicate an incoming call or unread messages
2. Speed dial keys	Press to dial the preset number
3. LINE 1 / LINE 2	To indicate the status of the line (idle, pre-dialing, in call, in on-hold call)
4. Alphanumerical keys	Enter phone numbers and texts
5. Function keys	HOLD: Put an active call on hold REDIAL: Call the last number dialed CONF: Activate three-way conference call MUTE: Mute a call SPEAKER: Activate speakerphone for hands-free conversations MESSAGE: Retrieve voice messages VOLUME: Increase or decrease the volume of the ringer tone or speakerphone



Front View – Handset:

Name	Description
1. Message waiting indicator	To indicate an incoming call or unread messages
2. LINE 1 / LINE 2	To indicate the status of the line (idle, in call, in on-hold call)
3. SPEAKER	Activate speakerphone for hands-free conversations
4. Alphanumerical keys	Enter phone numbers and texts
5. Function keys	MESSAGE: Retrieve voice messages HOLD: Put an active call on hold VOLUME: Increase or decrease the volume of the ringer tone, handset, or speakerphone

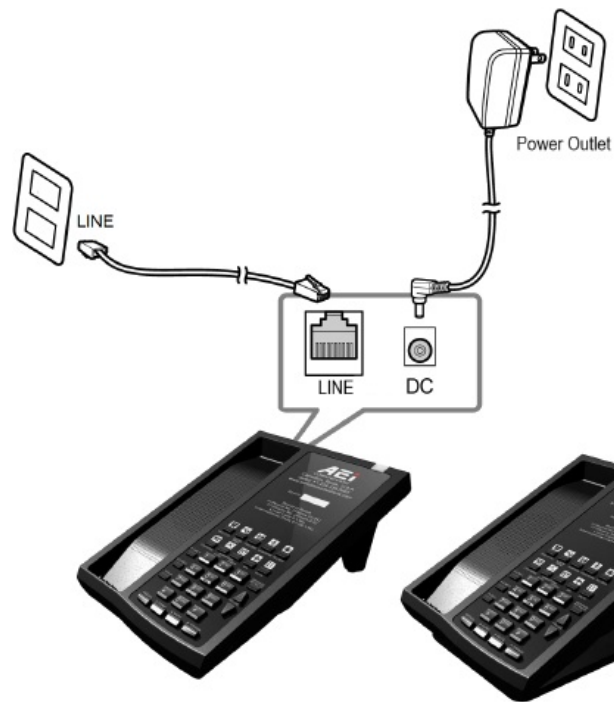
Back View



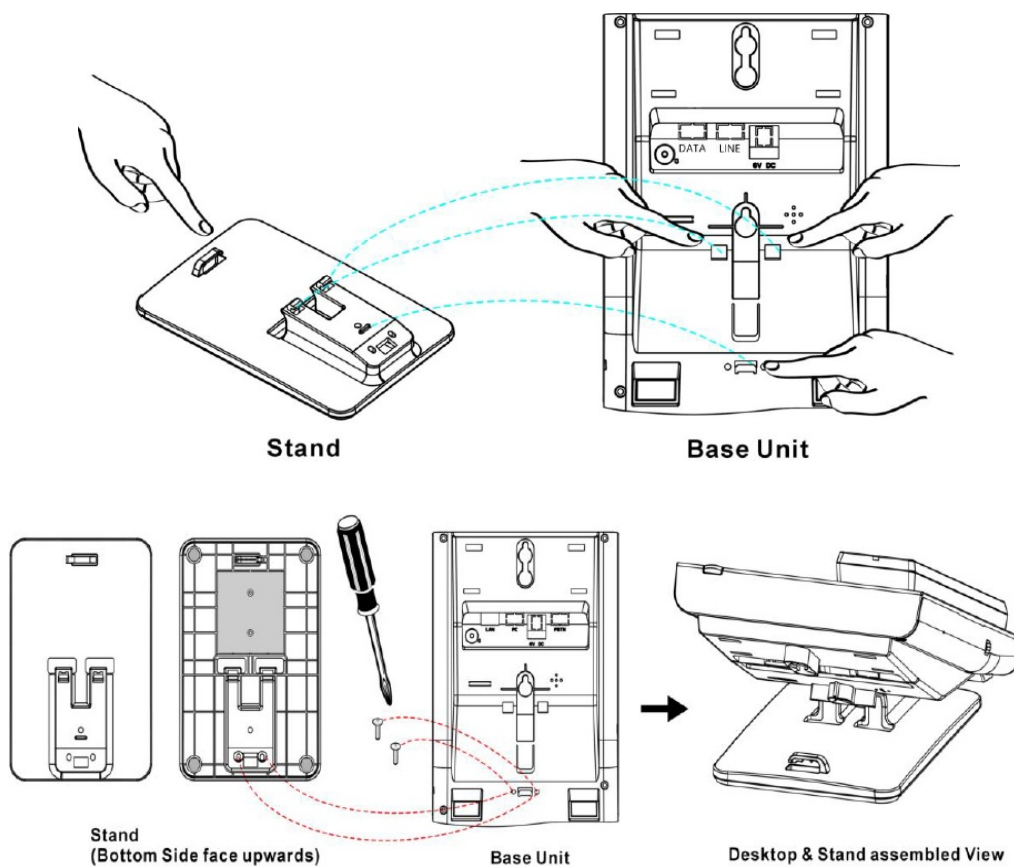
Name	Description
1. DC 6V Power jack	Connects to AC power adapter
2. PSTN line port	Connects to PSTN line

Connecting the Phone

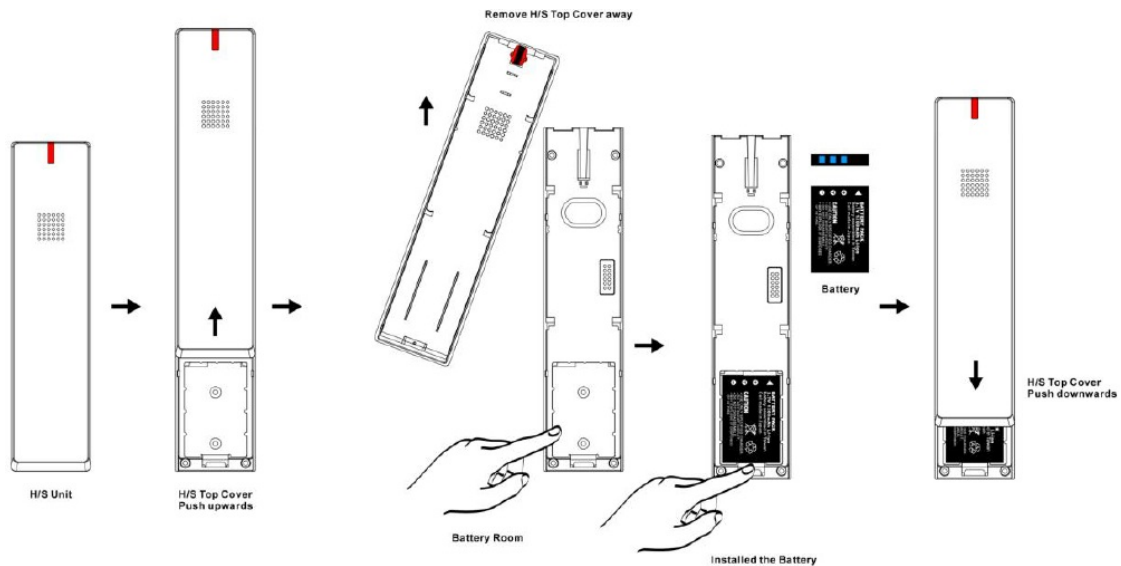
Refer to the user manual for detailed illustrations on how to connect the power, install the phone and stand, and install the handset and battery. The following illustration shows how to connect the power.



The following illustration shows how to install the phone and stand.



The following illustration shows how to install the handset and battery.



Operation

Answering a Call:

An incoming call is indicated by a ringing tone and a flashing indicator on both the handset and base units. You can answer the call by either picking up the handset or pressing the Line (Line1/Line2) key on the base or handset. An incoming call is indicated by a ringing tone and a flashing indicator at the top of both handset and base units. You can answer the call by doing one of the followings:

- Pick up the handset to answer the call.
- Press the Line (Line1/Line2) key on the base or handset to answer the call.

Making a Call:

Dialing with the Keypad:

- Enter the telephone number using the alphanumerical keypad.
- After entering the number, press the “#” key to force dialing or wait for 4 seconds for the number to be dialed automatically.

Using the Speed dial keys:

- There are 10 pre-assigned speed dial hotkeys for commonly dialed numbers.
- To call a number using speed dialing, press the speed dial hotkey that corresponds to the phone number and the call will start automatically.

You can use the 10 pre-assigned speed dial hotkeys, to configure the most commonly dialed numbers. Use the function to dial a number quickly, instead of keying in a complete number.

To call a number using speed dialing, follow the steps below:

- Press the speed dial hotkey that has been pre-assigned to the phone number and the call will start automatically.

Call Options

While a call is in progress, a number of additional options are available.

Using the Speaker Phone

For hands free operation, you can use the built-in speaker to talk on the phone.

To use the speakerphone, follow the steps below:

- While talking on the phone, press the SPEAKER key on the phone to enable the Speakerphone function.
- Press Speaker key again to terminate the call.

Putting a Call on Hold

You may want to put a call on hold temporarily while doing some work or attending to a second incoming or outgoing call. To put a call on hold, do one of the following:

- Press the HOLD key on the phone to put the call on hold.
- When you receive a second call, press the next available LINE key to attend to the new call, and the first call will be put on hold automatically.

Charging the Handset Battery

You would need to charge the handset battery before using the handset.

- Install the battery into the handset.
- Place the handset onto the base unit and base unit will start to charge the handset automatically.
- The charging indicator lights up in red during charging progress. The LED goes off after the handset battery is fully charged.

Checking Voice Messages

If the message waiting indicator at top of handset or base unit lights up in red, it indicates that there are one or more new messages in voicemail box.

- Press the MESSAGE key on the phone to retrieve voice messages.


Support

For technological support, please email to support@aeicommunication.com.

Over view

This phone is a full-feature telephone that provides voice communication. Read this QIG carefully to learn how to operate this product and take advantage of its features.

Documents / Resources

 <p>Analog DECT Phone</p> <p>AMT-8210-SMK, AMT-8110-SMK, ASP-8210-SMK, ASP-8110-SMK, AMT-8210-SMK Single-Line Analog Cordless Full Duplex Speakerphone, AMT-8210-SMK, Single-Line Analog Cordless Full Duplex Speakerphone, Analog Cordless Full Duplex Speakerphone, Cordless Full Duplex Speakerphone, Full Duplex Speakerphone, Duplex Speakerphone, Speakerphone</p> <p>QIG: V 1.00</p>	<p>AEi AMT-8210-SMK Single-Line Analog Cordless Full Duplex Speakerphone [pdf] User Manual</p> <p>AMT-8210-SMK, AMT-8110-SMK, ASP-8210-SMK, ASP-8110-SMK, AMT-8210-SMK Single-Line Analog Cordless Full Duplex Speakerphone, AMT-8210-SMK, Single-Line Analog Cordless Full Duplex Speakerphone, Analog Cordless Full Duplex Speakerphone, Cordless Full Duplex Speakerphone, Full Duplex Speakerphone, Duplex Speakerphone, Speakerphone</p>
--	---