

AEI AGR-9206-SM Analog DECT Phone User Manual

Contents

- [1 AEI AGR-9206-SM Analog DECT Phone](#)
- [2 Over view](#)
- [3 Product Description](#)
- [4 Operations](#)
 - [4.1 Making a Call](#)
- [5 Support](#)
- [6 Documents / Resources](#)
- [7 Related Posts](#)



AEI AGR-9206-SM Analog DECT Phone



Analog DECT Phone – AGR-9206-SM / AGR-9106-SM

Quick Installation Guide (QIG) V 1.00

Overview

The Analog DECT Phone is a full-featured telephone that provides voice communication. This QIG provides instructions to operate the product and take advantage of its features.

Package Contents

The package includes:

1. Base Unit
2. Handset
3. Stand
4. AC Adaptor
5. 10-feet, 4 wire Line Cord (with RJ-11 connector)
6. Quick Installation Guide (This document)

Product Description

The following contains important information to help you familiarize with the functions of the analog phone.

Front View

Name	Description
1. Message waiting indicator	To indicate an incoming call or unread messages.
2. Display screen	To display calls and status information.
3. Speed dial keys	Press to dial the preset number.
4. LINE 1 / LINE 2	To indicate a line been used as the following status: <ul style="list-style-type: none">• Idle: No LED indication.• In call: Red LED.• In on-hold call: Blinking red LED.
5. End key	Press to end a phone call.
6. Alphanumerical keys	Press these keys to enter phone numbers or texts.
7. Function keys	<ul style="list-style-type: none">• HOLD – Press to put an active call on hold.• SPEAKER – Press to activate the speakerphone for hands-free conversations.• VOLUME – Press to increase or decrease the volume of the ringer tone, handset, or speakerphone.

Back View

No.	Name	Description
1.	PSTN line port	Connects to PSTN line.
2.	DC 6V Power jack	Connects to AC power adapter.

Connecting the Phone

The following illustration shows how to connect the power ports of the phone:

The following illustration shows how to install the phone and stand:

Operations

Answering a Call

An incoming call is indicated by a ringing tone and a flashing indicator at the top of the base units. You can answer the call by doing one of the followings:

- Pick up the handset to answer the call.
- Press the Line (Line1/Line2) key to answer the call.

Making a Call

Dialing with the Keypad: Enter the telephone number with the alphanumeric keypad, and the call will start automatically.

Using the Speed dial keys: You can use the 6 pre-assigned speed dial hotkeys to configure the most commonly dialed numbers. To call a number using speed dialing, follow the steps below:

- Press the speed dial hotkey that has been pre-assigned to the phone number, and the call will start automatically.

Call Options

While a call is in progress, a number of additional options are available.

Using the Speaker Phone

For hands-free operation, you can use the built-in speaker to talk on the phone. To use the speakerphone, follow the steps below:

- While talking on the phone, press the SPEAKER key on the phone to enable the Speakerphone function.
- Press the SPEAKER key again to terminate the call.

Putting a Call on Hold

You may want to put a call on hold temporarily while doing some work or attending to a second incoming or outgoing call. To put a call on hold, do one of the following:

- Press the HOLD key on the phone to put the call on hold.
- When you receive a second call, press the next available LINE key to attend to the new call, and the first call will be put on hold automatically.

Over view

This phone is a full-feature telephone that provides voice communication. Read this QIG carefully to learn how to operate this product and take advantage of its features.

Package Contents

When unpacking the phone, ensure all the following items are present and undamaged. If anything appears to be missing or broken, contact your dealer for a replacement.

- 1. Base Unit
- 2. Handset
- 3. Stand
- 4. AC Adaptor
- 5. 10-feet, 4 wire Line Cord (with RJ-11 connector)
- 6. Quick Installation Guide (This document)

Product Description

The following contains important information to help you familiarize with the functions of the analog phone.

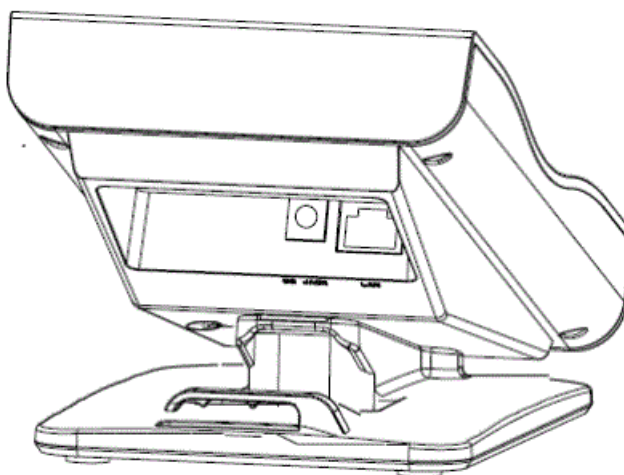
Front View



	Name	Description
1	Message waiting indicator	To indicate an incoming call or unread messages.
2	Display screen	To display calls and status information.
3	Speed dial keys	Press to dial the preset number.
4	LINE 1 / LINE 2	To indicate a line been used as the following status: – Idle: No LED indication. – In call: Red LED. – In on-hold call: Blinking red LED.

	Name	Description
5	End key	Press to end a phone call
6	Alphanumerical keys	Press these keys to enter phone numbers or texts.
7	Function keys	
	HOLD	Press to put an active call on hold.
	SPEAKER	Press to activate the speakerphone for hands free conversations.
	VOLUME	Press to increase or decrease the volume of the ringer tone, handset , or speakerphone.

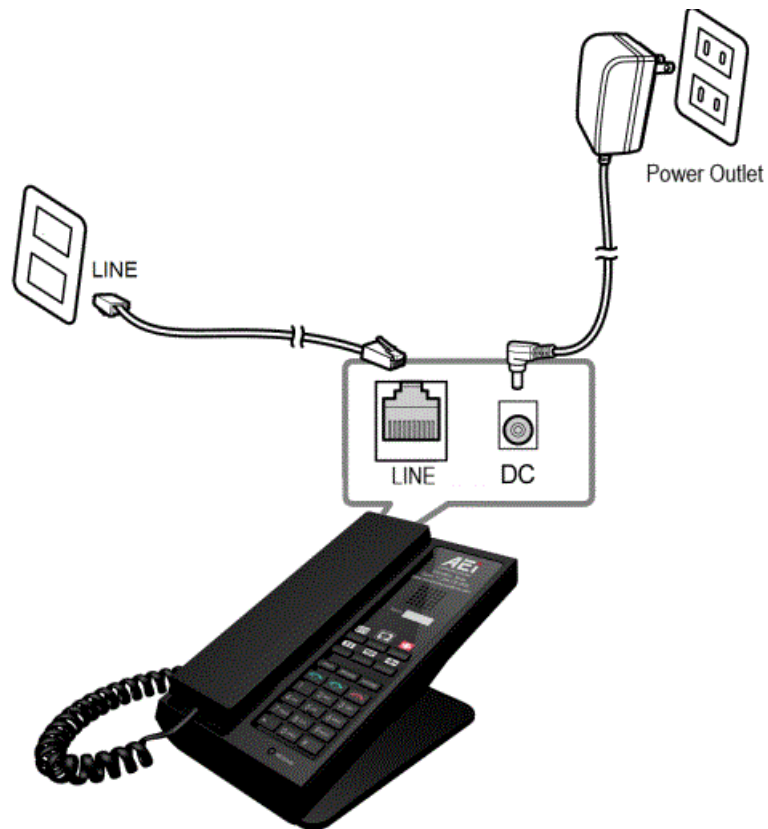
Back View



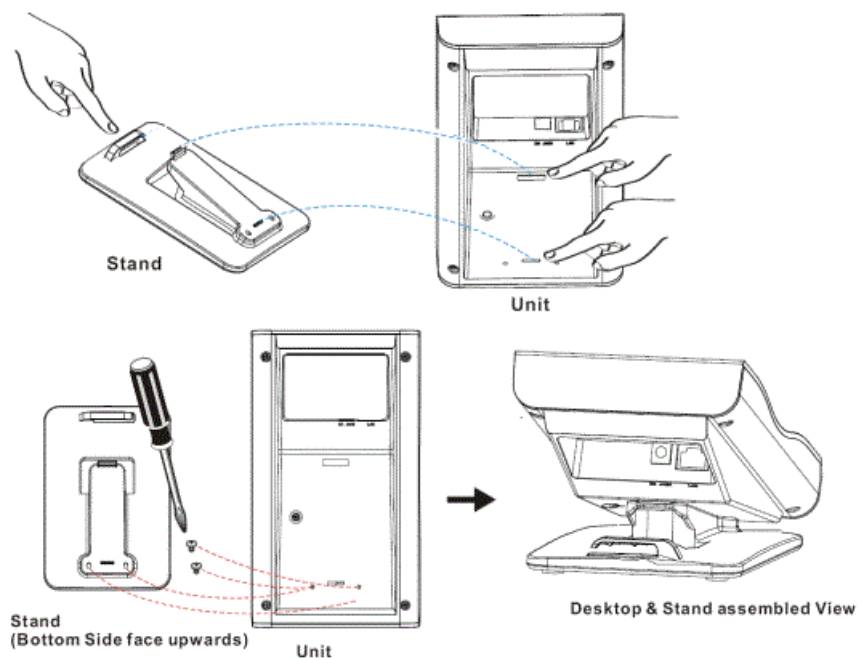
NO.	Name	Description
1	PSTN line port	Connects to PSTN line.
2	DC 6V Power jack	Connects to AC power adapter.

Connecting the Phone

The following illustration shows how to connect the power ports of phone.



The following illustration shows how to install the phone and stand.



Operations

Answering a Call

An incoming call is indicated by a ringing tone and a flashing indicator at the top of base units. You can answer the call by doing one of the followings:

- Pick up the handset to answer the call.
- Press the Line (Line1/Line2) key to answer the call.

Making a Call

Dialing with the Keypad

Enter the telephone number with the alphanumeric keypad and the call will start automatically.

Using the Speed dial keys

You can use the 6 pre-assigned speed dial hotkeys, to configure the most commonly dialed numbers. Use the function to dial a number quickly, instead of keying in a complete number.

To call a number using speed dialing, follow the steps below:

Press the speed dial hokey that has been pre-assigned to the phone number and the call will start automatically.

Call Options

While a call is in progress, a number of additional options are available.

Using the Speaker Phone

For hands free operation, you can use the built-in speaker to talk on the phone. To use the speakerphone, follow the steps below:

- While talking on the phone, press the SPEAKER key on the phone to enable the Speakerphone function.
- Press SPEAKER key again to terminate the call.

Putting a Call on Hold

You may want to put a call on hold temporarily while doing some work or attending to a second incoming or outgoing call. To put a call on hold, do one of the following:

- Press the HOLD key on the phone to put the call on hold.
- When you receive a second call, press the next available LINE key to attend to the new call, and the first call will be put on hold automatically.

Checking Voice Messages

If the message waiting indicator at top of base unit lights up in red, it indicates that there are one or more new messages in voicemail box.

Press the MESSAGE key on the phone to retrieve voice messages.

Support

For technological support, please email to support@eicommunication.com.

Documents / Resources

<div><p>Analog DECT Phone</p><p>AGR-9206-SM / AGR-9206-SM QMG V.1.00</p></div>	<div><p>AEI AGR-9206-SM Analog DECT Phone [pdf] User Manual</p><p>AGR-9206-SM Analog DECT Phone, AGR-9206-SM, Analog DECT Phone, DECT Phone, Phone</p></div>
---	--