



AEG SKP11GW3 Stacking Kit with Pull Out Shelf User Guide

[Home](#) » [AEG](#) » AEG SKP11GW3 Stacking Kit with Pull Out Shelf User Guide 

AEG SKP11GW3 Stacking Kit with Pull Out Shelf



Use wall plugs or screws for wall mounting based on the type of wall.

IT IS MANDATORY TO FIX THE CLAMP ON THE WALL. If the clamp assembly is not carried out correctly, the TD could fall and damage people and things. Contact qualified specialized personnel.

Contents

[1 Parts and Installation](#)

[Instructions](#)

[1.1 Safety Precautions](#)

[1.2 Stacking kit package](#)

[2 Documents / Resources](#)

[3 Related Posts](#)

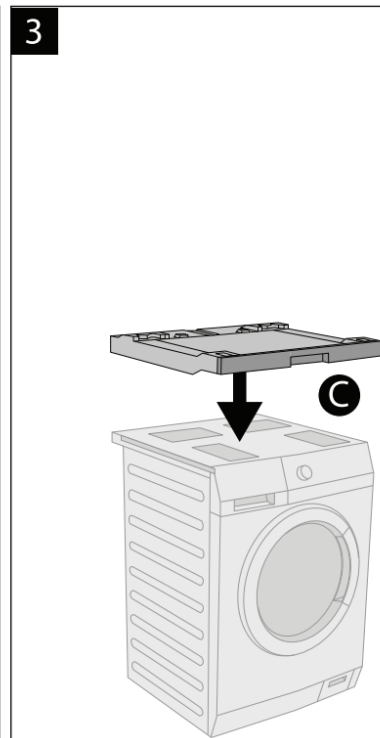
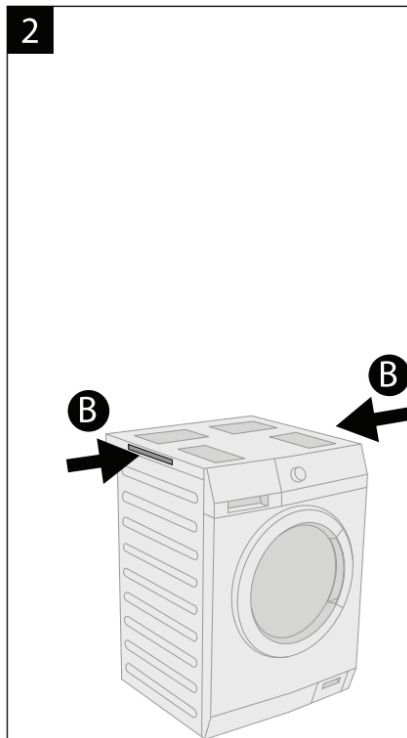
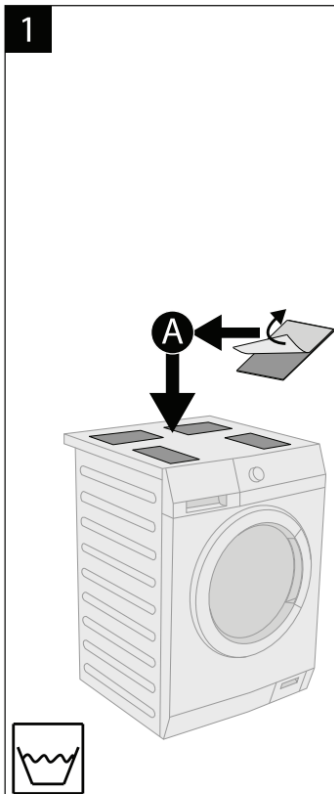
The diagram illustrates the correct installation of the door lock assembly. It is divided into two main sections, each showing a sequence of steps from the washing machine door to the final assembled state.

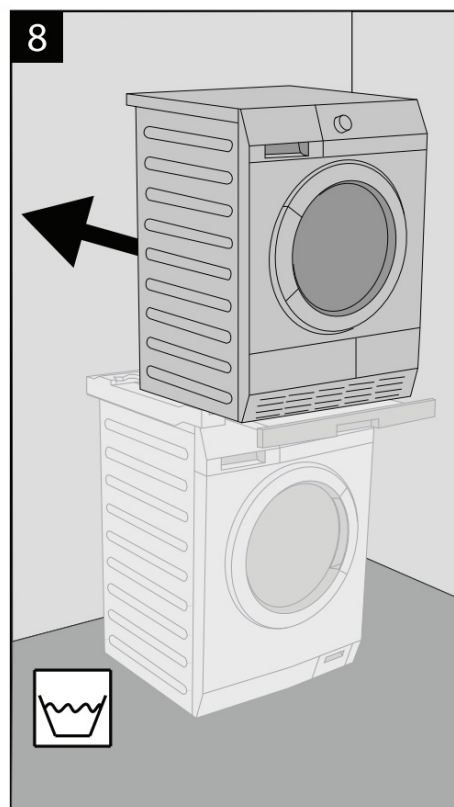
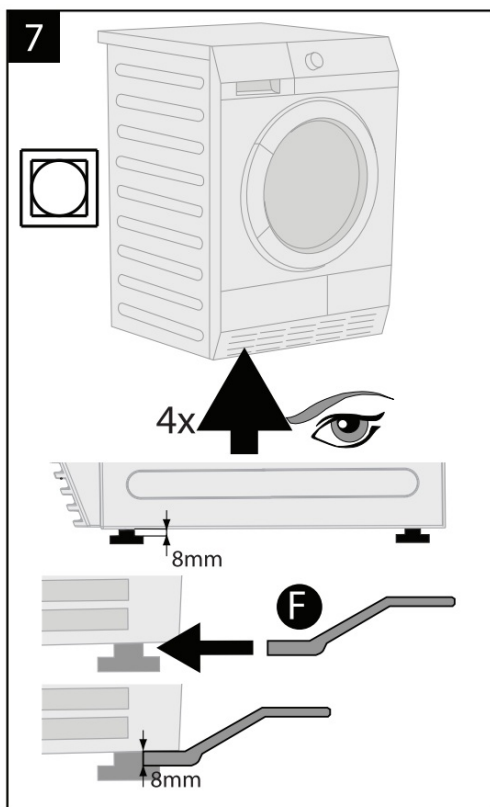
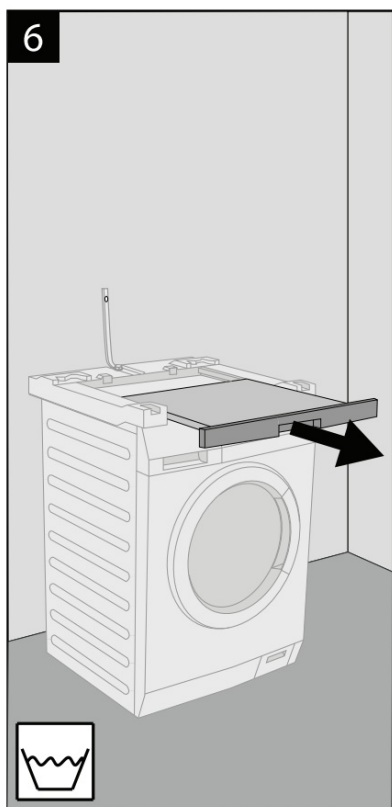
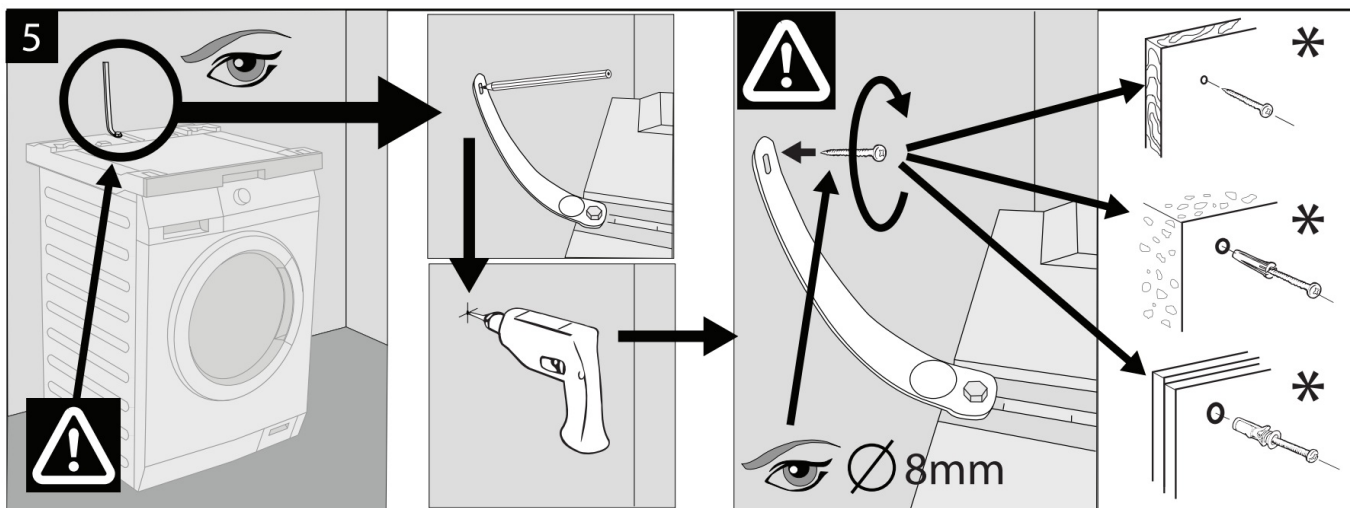
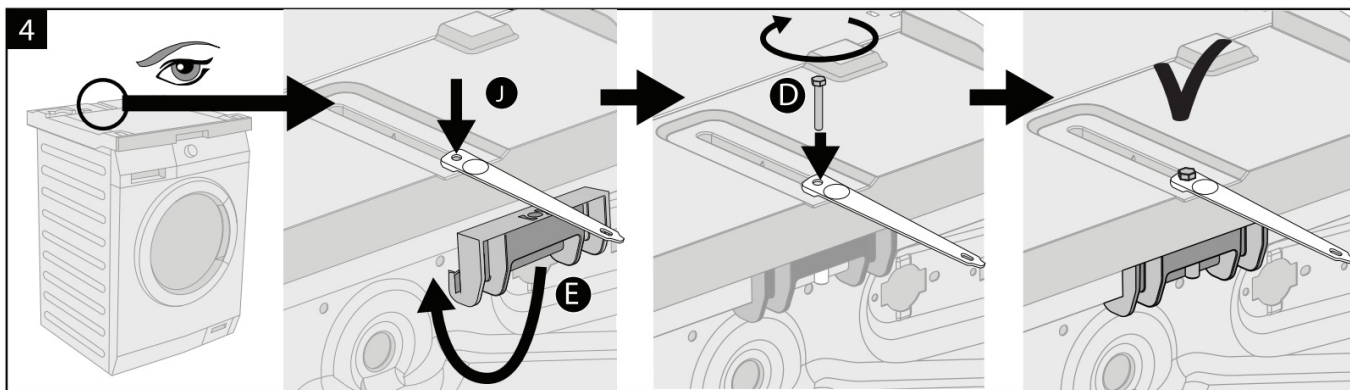
Top Section (Correct Installation):

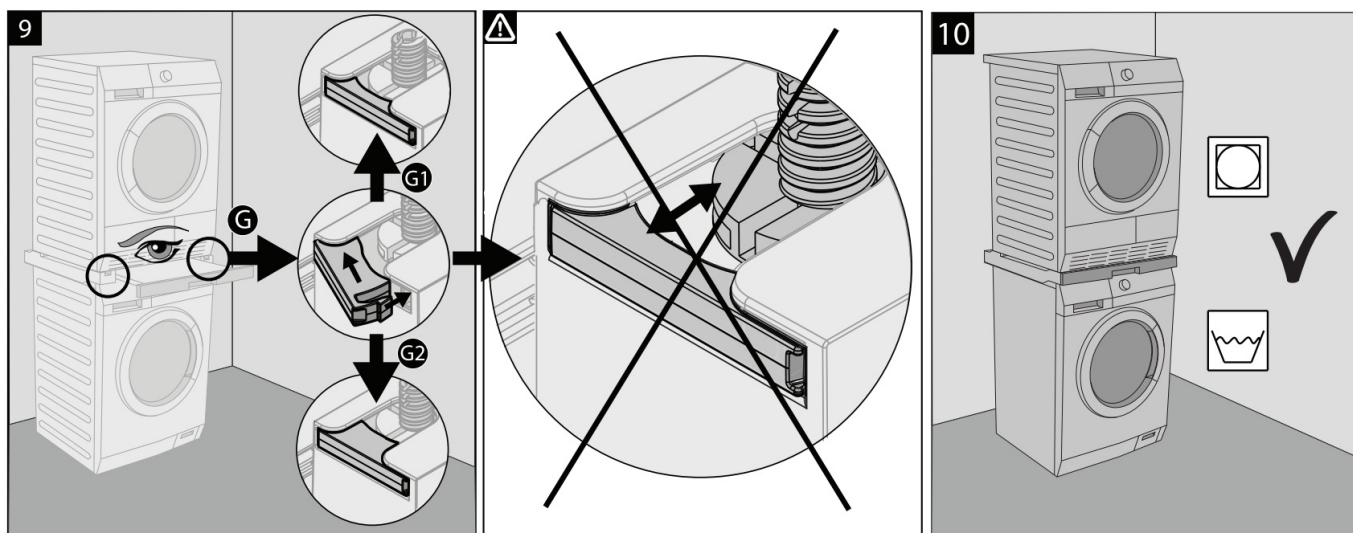
- Parts List:**
 - 4x **A**: Thin rectangular plates.
 - 2x **B**: Screws.
 - 1x **C**: Lock assembly.
 - 1x **D**: Screw.
 - 1x **E**: Bracket.
 - 1x **F**: Wrench.
 - 2x **G1**: Screws.
 - 2x **G2**: Screws.
 - 1x **H1**: Bracket.
 - 1x **H2**: Bracket.
 - 2x **I**: Screws.
 - 1x **J**: Long screwdriver.
- Warning:** A warning symbol (exclamation mark in a triangle) is shown above three alternative parts (H1, H2, I) which are crossed out with a large 'X', indicating they should not be used.
- Installation Steps:**
 - The washing machine door is shown with a square mark indicating the lock location.
 - An arrow points to the final assembled state, which is marked with a large checkmark (✓).

Bottom Section (Correct Installation):

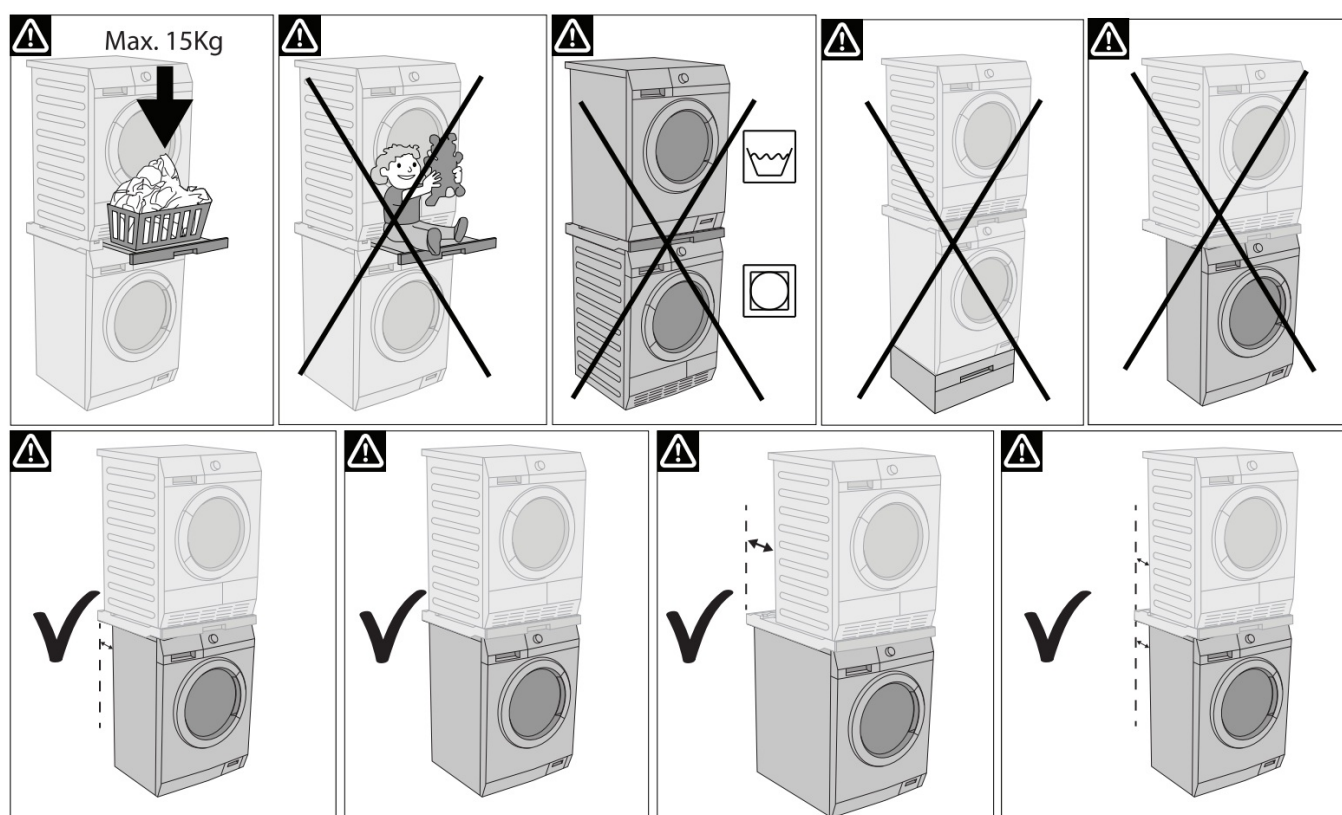
- Installation Steps:**
 - The washing machine door is shown with a square mark indicating the lock location.
 - An arrow points to the lock assembly (**C**) being attached to the door.
 - Another arrow points to the final assembled state, which is marked with a large checkmark (✓).







Safety Precautions




Stacking kit package

Packaging type	Packaging type	Where to recycle*
Outer carton box	PAP20	Carta
Plastic accessory bag	LDPE04	Plastic
Protection of the emulation kit in polystyrene	PS6	Plastic



www.electrolux.com/shop
www.aeg.com/shop

Documents / Resources



[AEG SKP11GW3 Stacking Kit with Pull Out Shelf](#) [pdf] User Guide

SKP11GW3, STAGW3, E4YHMKP3, SKP11GW3 Stacking Kit with Pull Out Shelf, Stacking Kit with Pull Out Shelf, Stacking Kit, Pull Out Shelf Stacking Kit

[Manuals+](#).