



# ADVANTECH SEG520-4SFP-T Industrial Managed Ethernet Switch User Guide

[Home](#) » [Advantech](#) » ADVANTECH SEG520-4SFP-T Industrial Managed Ethernet Switch User Guide 

## Contents

- [1 ADVANTECH SEG520-4SFP-T Industrial Managed Ethernet Switch](#)
- [2 Product Information](#)
- [3 Product Usage Instructions](#)
- [4 DIN Rail Mounting](#)
- [5 LED Status](#)
- [6 Product Overview](#)
- [7 Hardware Installation](#)
- [8 Terminal Blocks](#)
- [9 LED Status](#)
- [10 Default Settings](#)
- [11 Recommended Accessories](#)
- [12 Troubleshooting](#)
- [13 Documents / Resources](#)
  - [13.1 References](#)
- [14 Related Posts](#)

The Advantech logo consists of the word "ADVANTECH" in a bold, white, sans-serif font, centered within a solid blue rectangular background.

**ADVANTECH SEG520-4SFP-T Industrial Managed Ethernet Switch**



## Product Information

Model #	Description	Temp Rating
SEG5204SFP-T	16 Port GbE + 4 GbE SFP Full L2 Industrial Managed Ethernet Switch	N/A

## Product Usage Instructions

Before you begin, be sure you have the following:

- Ethernet Switch
- Din Rail Mount Bracket (Installed)
- Wall Mount Bracket
- Power Supply (Required not included)

## Hardware Installation

### Wall Mounting

Follow the steps below to wall mount the Ethernet switch:

1. Choose a suitable location on the wall.
2. Use appropriate screws and wall anchors to securely attach the wall mount bracket to the wall.
3. Slide the Ethernet switch onto the wall mount bracket and ensure it is securely attached.

### DIN Rail Mounting

Follow the steps below to DIN rail mount the Ethernet switch:

1. Choose a suitable location on the DIN rail.

2. Slide the DIN rail mount bracket onto the DIN rail and ensure it is securely attached.
3. Slide the Ethernet switch onto the DIN rail mount bracket and ensure it is securely attached.

## Terminal Blocks

The Ethernet switch has terminal blocks for power input. Follow the instructions below to connect the power:

1. Connect Power Input 1 (12 to 48VDC) to the respective terminal block.
2. Connect Power Input 2 (12 to 48VDC) to the respective terminal block.
3. Ensure proper grounding by connecting the DC Ground wires to the respective terminal block.

## LED Status

The Ethernet switch has several LEDs that indicate its status.  
Refer to the table below for LED status descriptions:

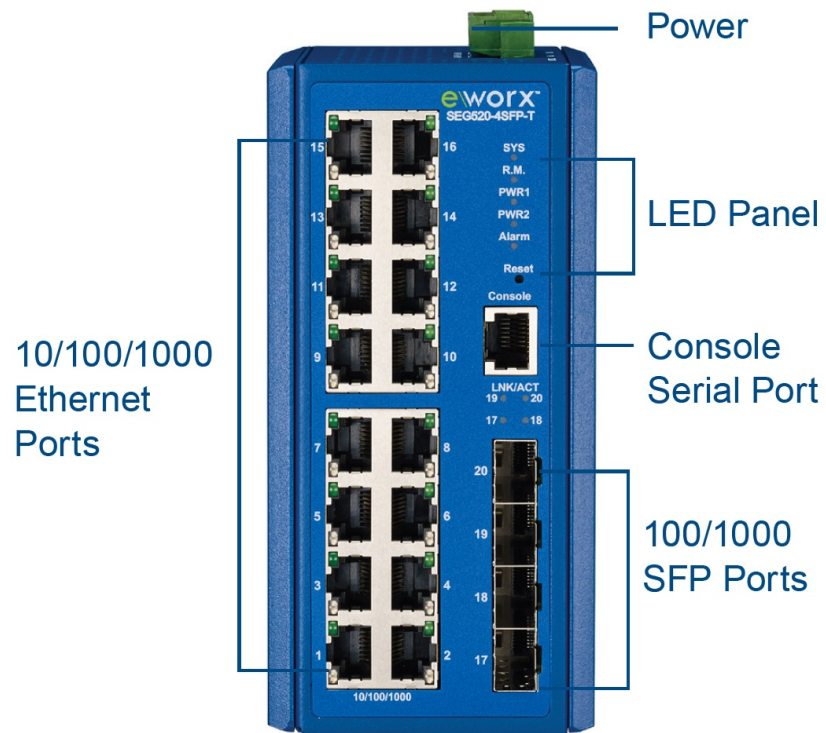
LED	Status	Description
LED SYS	Green	System is operating normally
LED R.M.	Green Off	No Power / system crash / operation initiating
LED PW R1	Green Off Solid Red	Powered up Power down or not installed
LED PW R2	Blinking Red Off	Powered up Power down or not installed
Alarm	Green Off Defined Major policies are detected Defined minor policies are detected Powered off or system operating normally	

## Default Settings

The Ethernet switch has the following default settings:

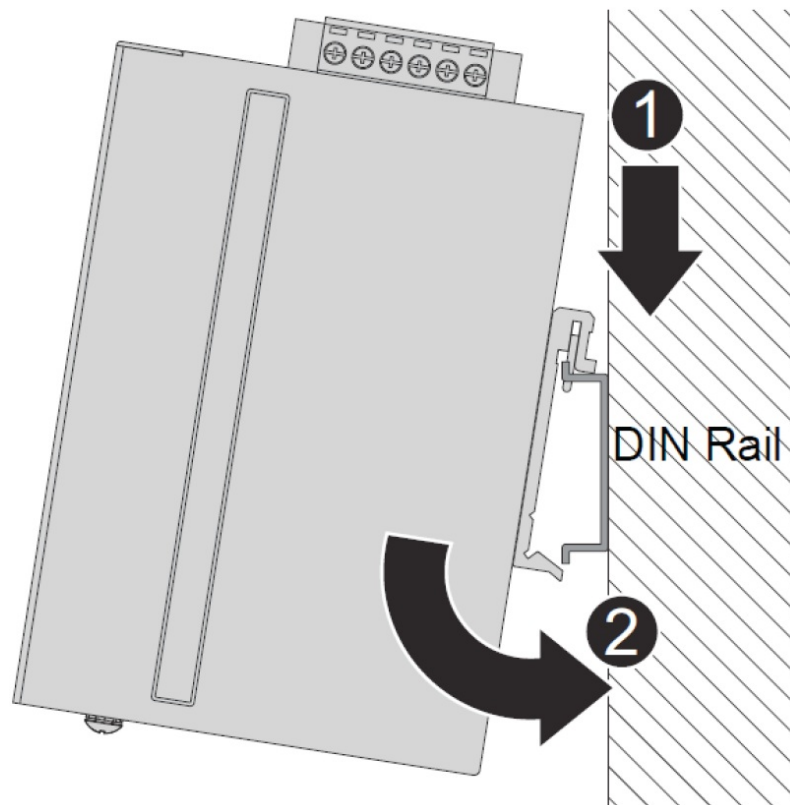
- IP Address: 192.168.1.1
- Subnet mask: 255.255.255.0
- Default gateway: 192.168.1.254
- Username: admin
- Password: admin

## Product Overview

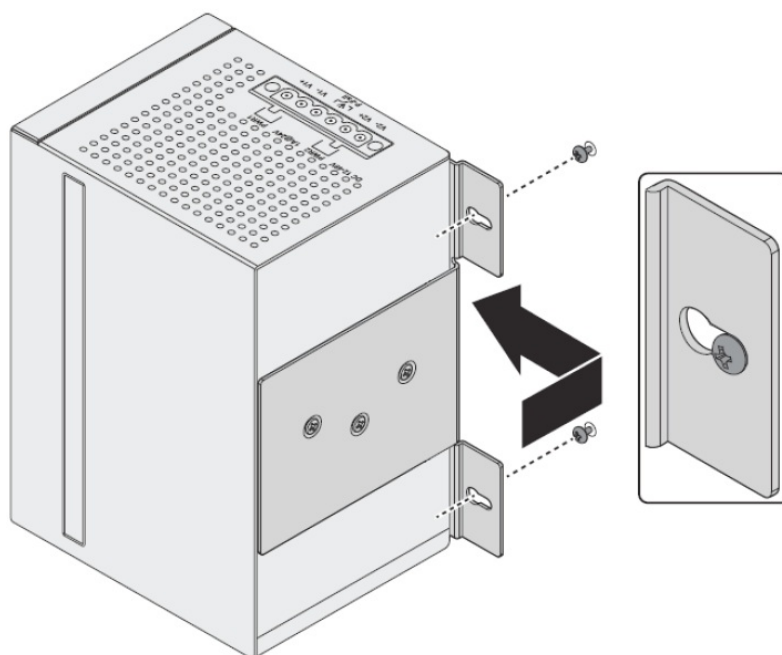
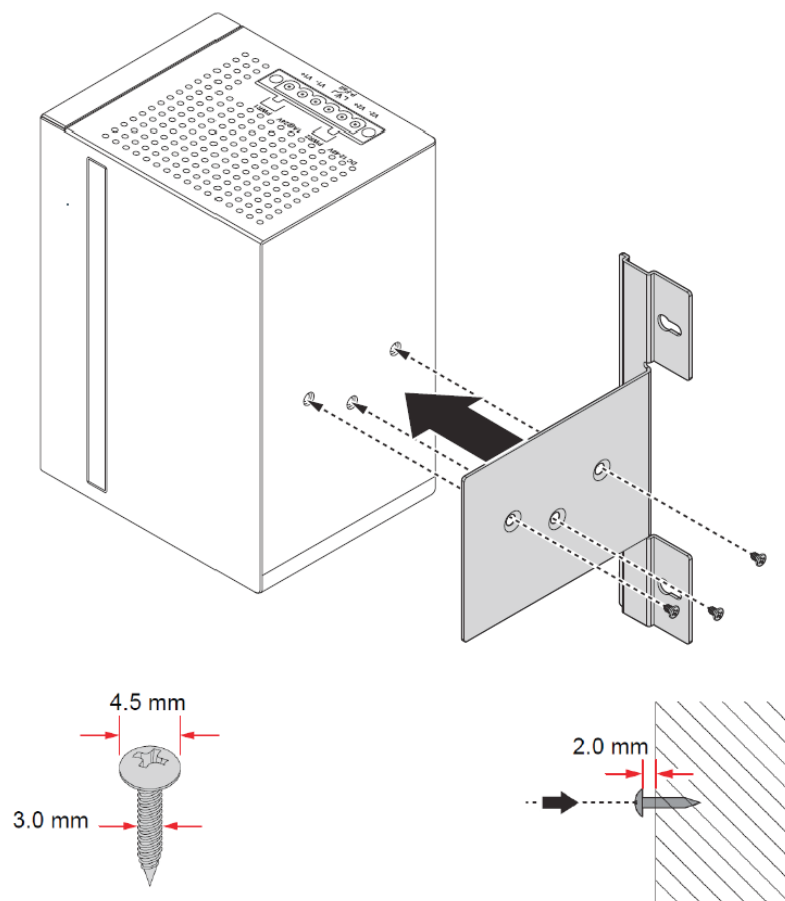


## Hardware Installation

### DIN Rail Mounting

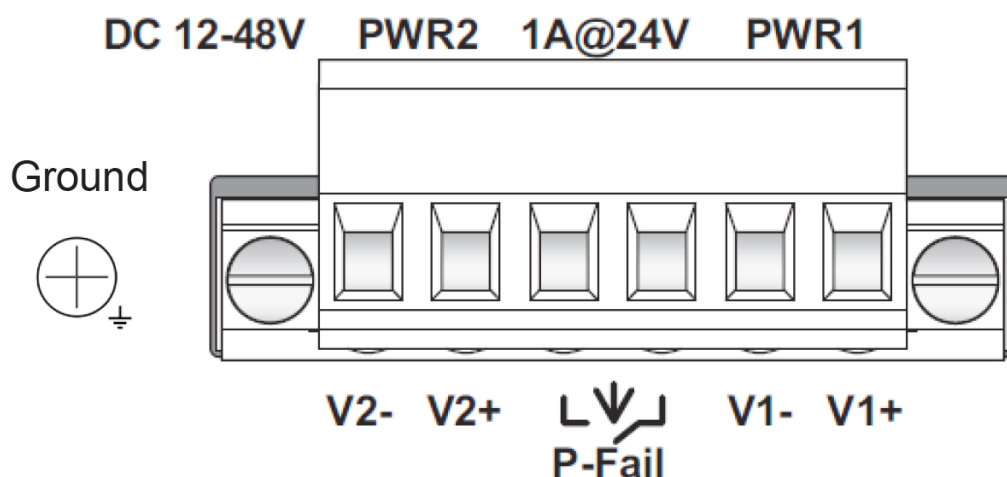


### Wall Mounting



## Terminal Blocks

Terminal	Description
V2-	Power Input 2 (DC Ground)
V2+	Power Input 2 (12 to 48VDC)
P-Fail	Power Fault Relay
P-Fail	Power Fault Relay
V1-	Power Input 1 (DC Ground)
V1+	Power Input 1 (12 to 48VDC)



- **Wire Gauge:** 12-24 AWG (3.31 – 0.205 mm<sup>2</sup>).
- **Torque:** 7lb-in.

## LED Status

LED	Status	Description
SYS	Green	System is operating normally
	Off	No Power / system crash / operation initiating
R.M.	Green	Active when determining ring master
PWR1	Green	Powered up
	Off	Power down or not installed
PWR2	Green	Powered up
	Off	Power down or not installed
Alarm	Solid Red	Defined Major policies are detected
	Blinking Red	Defined minor policies are detected
	Off	Powered off or system operating normally

## Default Settings

- IP Address: 192.168.1.1
- Subnet mask: 255.255.255.0
- Default gateway: 192.168.1.254
- Username: admin
- Password: admin

## Recommended Accessories

### MDR-40-24

Power Supply



### C5UMB3FBG

Ethernet Cables



## Troubleshooting

If no LEDs light, verify that the power supply connections are solid and that power is present on the output of the power supply.

Use the LED table to verify that power is present, a link is established, data is being transmitted, and to verify port speed.

If data does not pass and cable connections have been verified, contact your Network Administrator to validate that the network connection is good.

If you encounter any issues with the Ethernet switch, follow the troubleshooting steps below:

1. Ensure that the power supply connections are secure and that power is present on the output of the power supply.
2. Refer to the LED table to check if power is present, a link is established, and data is being transmitted.
3. If data does not pass and cable connections have been verified, contact your Network Administrator to validate the network connection.

You can find the complete user manual in the documentation and download section of the product web page. Follow the steps below to access it:

1. Go to [www.advantech-bb.com](http://www.advantech-bb.com).
2. Search for the model number.
3. Visit the documentation/download section of the product page to download the files.

If you need further assistance, please contact our support team:

Phone: 1-888-948-2248 (US) | Europe: +353 91 792444

Email: [support@advantech-bb.com](mailto:support@advantech-bb.com)

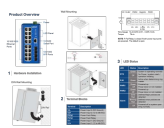
Website: [www.advantech-bb.com](http://www.advantech-bb.com)

Address: 707 Dayton Road, PO Box 1040, Ottawa, IL 61350


Phone: 815-433-5100 | Fax: 815-433-5109

---

## Documents / Resources

	<p><b><a href="#">ADVANTECH SEG520-4SFP-T Industrial Managed Ethernet Switch</a></b> [pdf] User Guide SEG520-4SFP-T Industrial Managed Ethernet Switch, SEG520-4SFP-T, Industrial Managed Ethernet Switch, Managed Ethernet Switch, Ethernet Switch</p>
---	---

## References

- <sup>B+B</sup> [B+B SmartWorx powered by Advantech | Innovative Industrial Connectivity](#)
-  [Web Page Under Construction](#)
- <sup>B+B</sup> [B+B SmartWorx powered by Advantech | Innovative Industrial Connectivity](#)
- <sup>MH</sup> [Search - Manual-Hub.com](#)