

ADTRAN ProStart Smooth Efficient Deployments Installation Guide

[Home](#) » [ADTRAN](#) » ADTRAN ProStart Smooth Efficient Deployments Installation Guide 

ADTRAN ProStart Smooth Efficient Deployments



Contents

- [1 Overview](#)
- [2 SMOOTH, EFFICIENT DEPLOYMENTS](#)
- [3 ProStart | ProCloud and vWLAN](#)
- [4 Ordering Information](#)
- [5 For More Information](#)
- [6 Documents / Resources](#)
 - [6.1 References](#)
- [7 Related Posts](#)

Overview

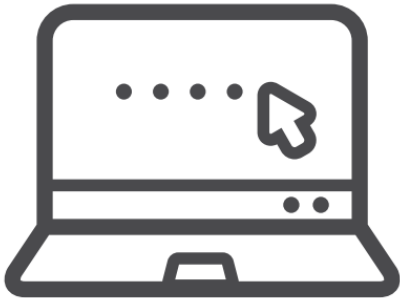
ADTRAN's ProStartSM helps customers cost-effectively and quickly deploy a high performance, reliable wireless network. With ProStart, you have the expertise to deploy your ADTRAN® network solutions, either for a greenfield application, redesigning networks, or deploying existing hardware in new applications or new locations. ProStart can provide the level of support you need— whether it is the full turnkey solution, remote support, or partner support.

From a single site install to a complex multi-site installation, ProStart will assist with a comprehensive set of services.

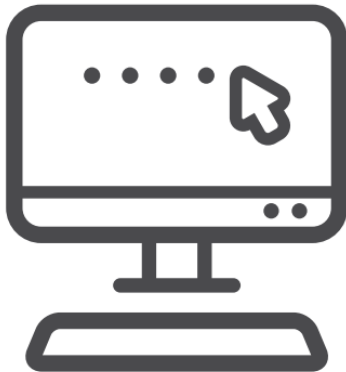
- SITE SURVEYS



- REMOTE INSTALLS



- ONSITE INSTALLS



SMOOTH, EFFICIENT DEPLOYMENTS



Site Surveys

Utilize site surveys to ensure you are getting optimized performance from your ADTRAN solution. ProStart offers:

- Remote predictive site surveys for indoor deployments prior to installation
- Onsite Wireless Surveys either pre-installation or post-installation

ProStart Remote Installation

ProStart Remote is best suited for ProCloud and Bluesocket vWLAN implementations where you would like to retain ownership of the physical, onsite activities. ADTRAN's engineers will remotely direct the customer or partner with installing the network. ProStart Remote:

- Offers solutions tailored to each site's design requirements.
- Ensures a high-level of customer satisfaction working towards agreed time lines and milestones.
- Shares best practices to drive efficiency.
- Supplies a single point of contact for the customer through all steps of implementation.

ProStart Onsite

For complex, multi-site installations or customers who prefer a turn-key implementation ProStart Onsite is the ideal solution. ProStart Onsite:

- Represents the highest level of installation service with end-to-end support provided by ADTRAN.
- Includes comprehensive services including remote predictive surveys, configuration, test and turn-up, and physical AP installation.

ProStart | ProCloud and vWLAN

ProStart for ProCloud and Bluesocket vWLAN

ProStart Services	Access Points	
	Remote Install	On-Site Install
Project Management		
Dedicated ADTRAN Project Manager	●	●
Dedicated ADTRAN Project Engineer	●	●
ADTRAN On-Site Technician		●
Wireless Survey		
Remote Predictive Survey*	Sold Separately	●
Onsite Passive Wireless Site Survey	Sold Separately	Sold Separately
Implementation		
Custom Data Gathering	●	●
System & AP Configuration	●	●
Physical Mounting of AP		●
Connection of AP to Existing Cabling		●
Run New Cabling	Sold Separately	Sold Separately
Test and Turn-up		
Remote Support	●	●
On-Site Technician		●
Post Install Coverage Validation	Remote Support	On-Site Support
Warranty		
14 Calendar Day Labor Warranty	●	●

Why ADTRAN?

Excellence in Installation and Support

- Delivers unprecedented value, ensuring your ADTRAN solution is deployed on time and with excellence

Comprehensive ProServices

- Includes ProStart (installation), ProCare (support and maintenance) ProCare Help Desk, and ProCloud (managed services)
- Can be customized to meet specific business needs

Faster Rollouts

- Options for ADTRAN ProStart engineers to stage and configure equipment ahead of actual installation

Installation Warranty

- 14 calendar-days labor warranty for all ProStart services
- Includes remote configuration adjustments to fine tune the network

Peace of Mind

- Continued maintenance and support for your ADTRAN network with comprehensive ProCare services
- Offload IT burdens and improve user experience with our optional 7x24 Wi-Fi Help Desk

Ordering Information

Description	Part Number
Site Survey	
Remote Predictive Site Survey <ul style="list-style-type: none">• For an indoor ProCloud or vWLAN deployment prior to installation. Includes remote data gathering and creation of heatmaps. Valid up to 40,000 sq. feet or 4 floors	1100ALR001WIFSV
Onsite Wireless Survey <ul style="list-style-type: none">• For indoor ProCloud or vWLAN deployments, either pre-installation or post-installation. Includes purpose statement, survey information, RF analysis (heatmap), AP placement map, capacity, channel and power plan. Valid for 5,000 sq. feet (minimum quantity – 2).	1100ALS001WIFSV
Installation (Up to 15 APs) – Remote and Onsite	
ProStart Remote for 15 APs or Fewer BSAP 1920, 1925, 1930, 1935, 1940, 2030, 2035, 2135 (per AP) <ul style="list-style-type: none">• For remote installation of 15 APs or fewer, or used when adding APs to an existing network. Includes remote configuration, testing, and turn-up support.	1102ALR2101WIF1

ProStart Onsite for 15 APs or Fewer BSAP 1920, 1925, 1930, 1935, 1940, 2030, 2035, 2135 (per AP) <ul style="list-style-type: none"> For onsite installation of 15 APs or fewer, or used when adding APs to an existing network. Includes configuration of access point, remote support during test and turn-up, onsite mounting of AP (up to 12 ft ceilings) and connection to existing cabling infrastructure. 	1102ALS2101WIF1
Installations (More than 15 APs) – Remote	
ProStart Remote for ProCloud or vWLAN <ul style="list-style-type: none"> Base installation service for each project. Must be purchased in conjunction with Pro Start Remote Installation for Bluesocket APs. 	1100ALR1001WIF1
ProStart Remote for Bluesocket APs BSAP 1920, 1925, 1930, 1935, 1940, 2030, 2035, 2135 (per AP) <ul style="list-style-type: none"> For remote installation of Bluesocket APs. Includes remote configuration, testing, and turn-up support. 	1100ALR2101WIF1
Installations (More than 15 APs) – Onsite	
ProStart Onsite for ProCloud or vWLAN <ul style="list-style-type: none"> Base installation service for each project. Must be purchased in conjunction with Pro Start Onsite Installation for Bluesocket APs. 	1100ALS1001WIF1
ProStart Onsite for Bluesocket APs BSAP 1920, 1925, 1930, 1935, 1940, 2030, 2035, 2135 (per AP) <ul style="list-style-type: none"> For onsite mounting of each Bluesocket AP included in the project. Includes configuration of access point, remote support during test and turn-up, onsite mounting of AP (up to 12 ft ceilings) and connection to existing cabling infrastructure. 	1100ALS2101WIF1

For More Information

For a detailed description of these service offerings, go to www.adtran.com/prostart or contact the ProStart Implementation Team at prostart@adtran.com or 888-874-2237

ADTRAN, Inc.

Attn: Enterprise Networks
901 Explorer Boulevard
Huntsville, AL 35806
P.O. Box 140000
Huntsville, AL 35814-4000
256 963-8000
256 963-8699 fax

General Information

800 9ADTRAN

info@adtran.com

www.adtran.com

Bluesocket Business Group

866-633-3358

vWLAN@adtran.com

www.adtran.com/bluesocket

Pre-Sales Technical Support

888 423-8726

application.engineer@adtran.com

www.adtran.com/presale

Post-Sales Technical Support

888 423-8726

support@adtran.com

www.adtran.com/support

Where to Buy

888 423-8726

channel.sales@adtran.com

www.adtran.com/where2buy

ProServices

888 874-2237

proservices@adtran.com

www.adtran.com/proservices

Global Inquiries

256 963-8000

256 963-6300 fax

international@adtran.com


AD10047B (EN2011B) November Copyright © 2015 ADTRAN, Inc. All rights reserved. ADTRAN believes the information in this publication to be accurate as of publication date, and is not responsible for error. Specifications subject to change without notice. ADTRAN, Bluesocket and vWLAN are registered trademarks of ADTRAN, Inc. and its affiliates in various countries. All other trademarks mentioned in this document are the property of their respective owners.

ADTRAN warranty duration and entitlements vary by product and geography. For specific warranty information, visit www.adtran.com/warranty

ADTRAN products may be subject to U.S. export controls and other trade restrictions. Any export, re-export, or transfer of the products contrary to law is prohibited. For more information regarding ADTRAN's export license, please visit www.adtran.com/exportlicense



Documents / Resources

	<p>ADTRAN ProStart Smooth Efficient Deployments [pdf] Installation Guide ProStart Smooth Efficient Deployments, ProStart Smooth, Efficient Deployments, Deployments</p>
---	---

References

- [Adtran My Adtran Log In](#)
- [Adtran Services](#)
- [Adtran Support](#)
- [Adtran My Adtran Log In](#)
- [User Manual](#)

Manuals+, Privacy Policy

This website is an independent publication and is neither affiliated with nor endorsed by any of the trademark owners. The "Bluetooth®" word mark and logos are registered trademarks owned by Bluetooth SIG, Inc. The "Wi-Fi®" word mark and logos are registered trademarks owned by the Wi-Fi Alliance. Any use of these marks on this website does not imply any affiliation with or endorsement.